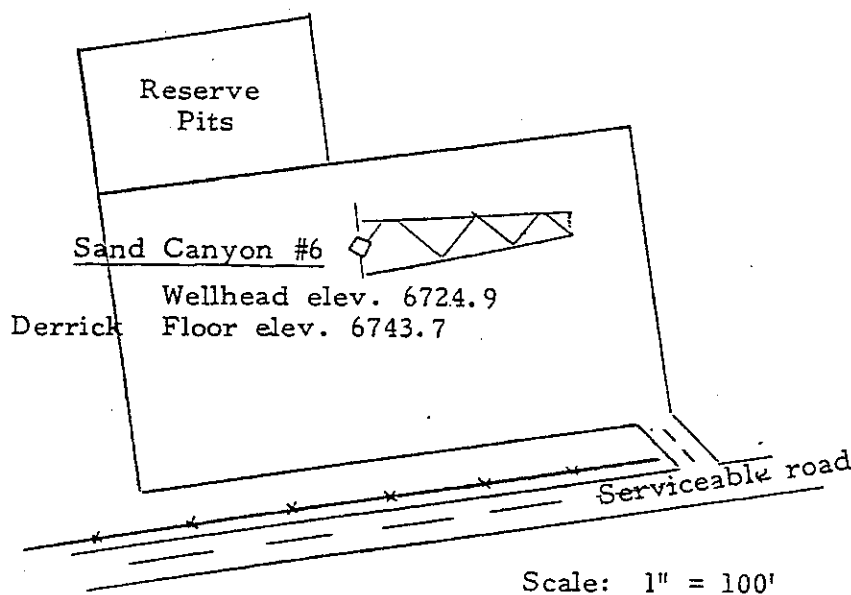
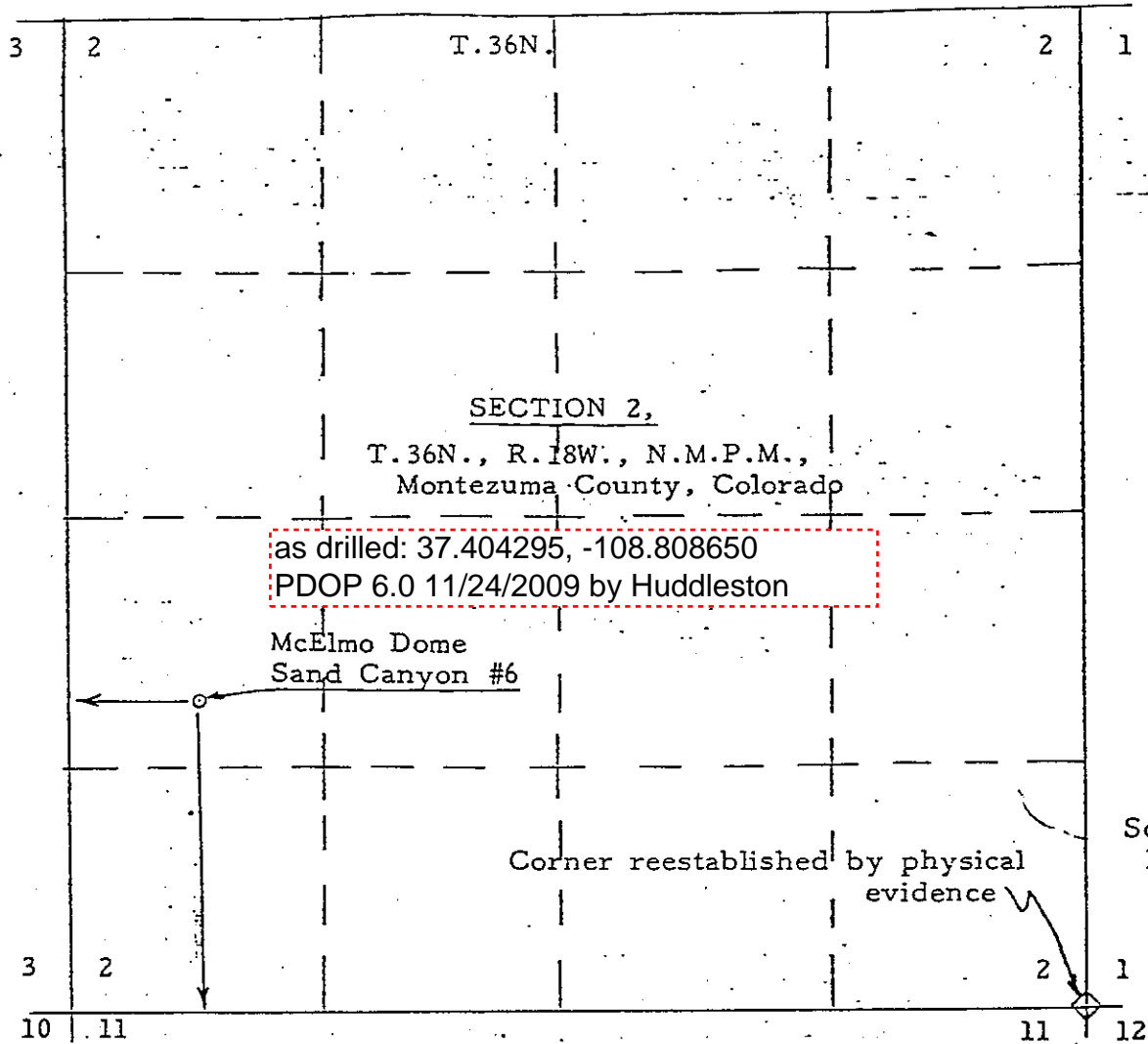


Sand Canyon #6 located in the SW 1/4 of Sec. 2,
T.36N., R.18W., N.M.P.M., Montezuma County, Colo.

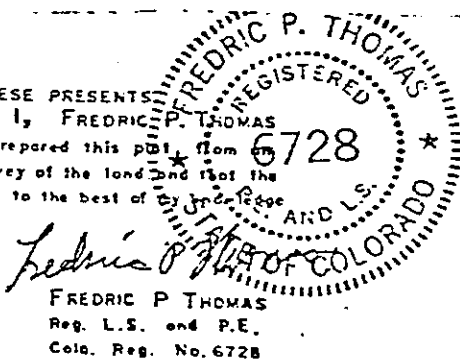
Oil Company
McElmo Dome - Well Sand
Canyon #6

T.37N.

As Built Location and Elevations 4-24-81



KNOW ALL MEN BY THESE PRESENTS
THAT I, FREDRIC P. THOMAS
do hereby certify that I prepared this plat from an
actual and accurate survey of the land and that the
same is true and correct to the best of my knowledge
and belief.



THOMAS Engineering Inc.

25 N. Linden
Cortez, Colorado
365-4496

FILMED