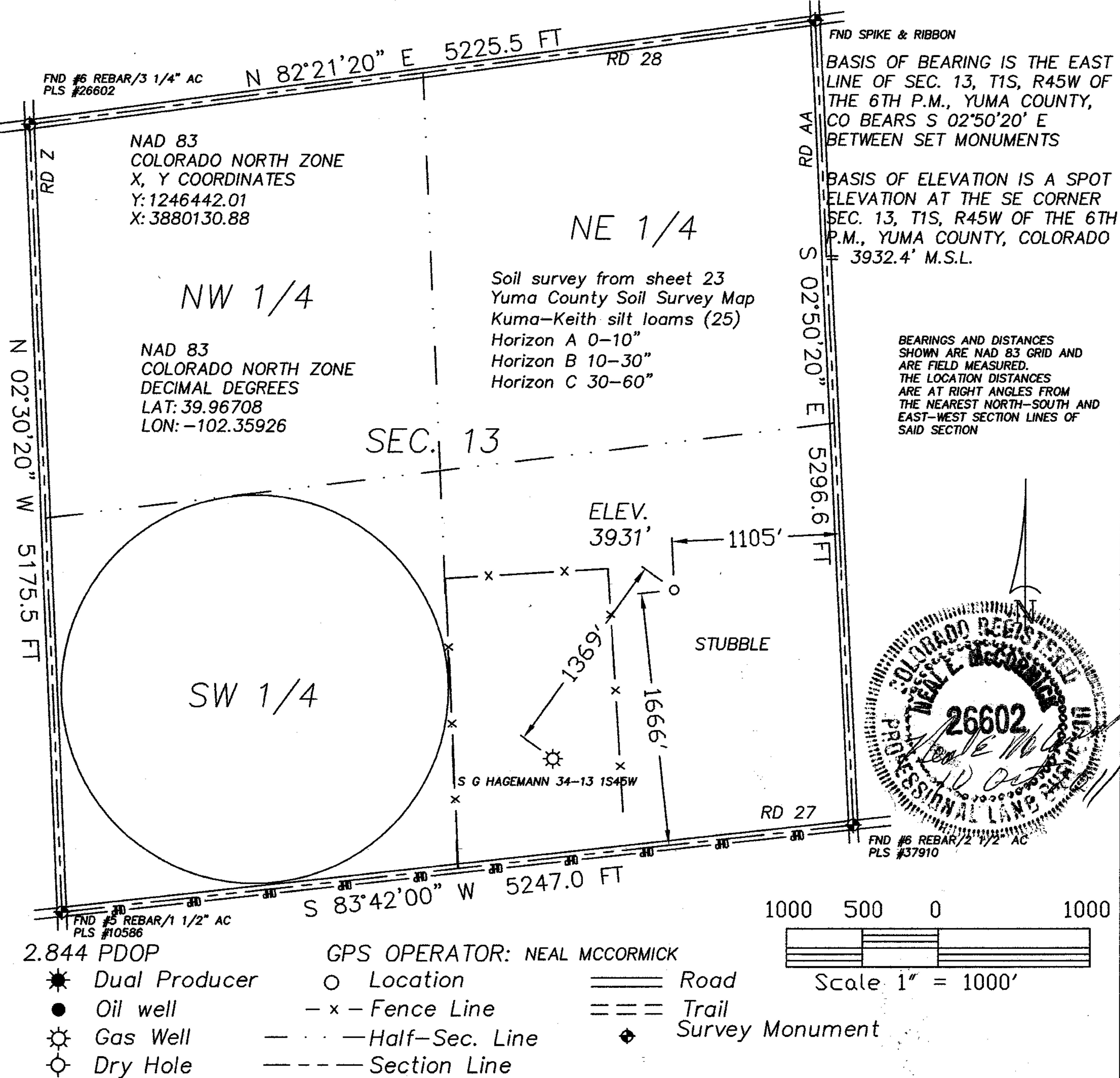



The accompanying plat is an accurate representation showing the location of a proposed well. This location may be described as a point 1666 feet North of the South line, and 1105 feet West of the East line of Section 13, Township 1 South, Range 45 West of the 6th P.M., Yuma County, Colorado. The surface elevation at this point is 3931 feet above m.s.l. Note: This is not a land survey plat. There are no visible improvements within 400 feet of the location



 <p>GREAT PLAINS SURVEYING, INC.</p> <p>20575 C.R. 21 Haxtun, CO 80731</p> <p>Phone 970-774-3602 Fax 970-774-3601</p>	DATE OF FIELD WORK:	DATE OF DRAWING:
	30 SEPTEMBER 2011	10 OCTOBER 2011
	S G HAGEMANN 43-13 1S45W	
	NE 1/4 SE 1/4 SEC. 13, T1S, R45W	
	AUGUSTUS ENERGY PARTNERS, LLC.	
	YUMA COUNTY, COLORADO	