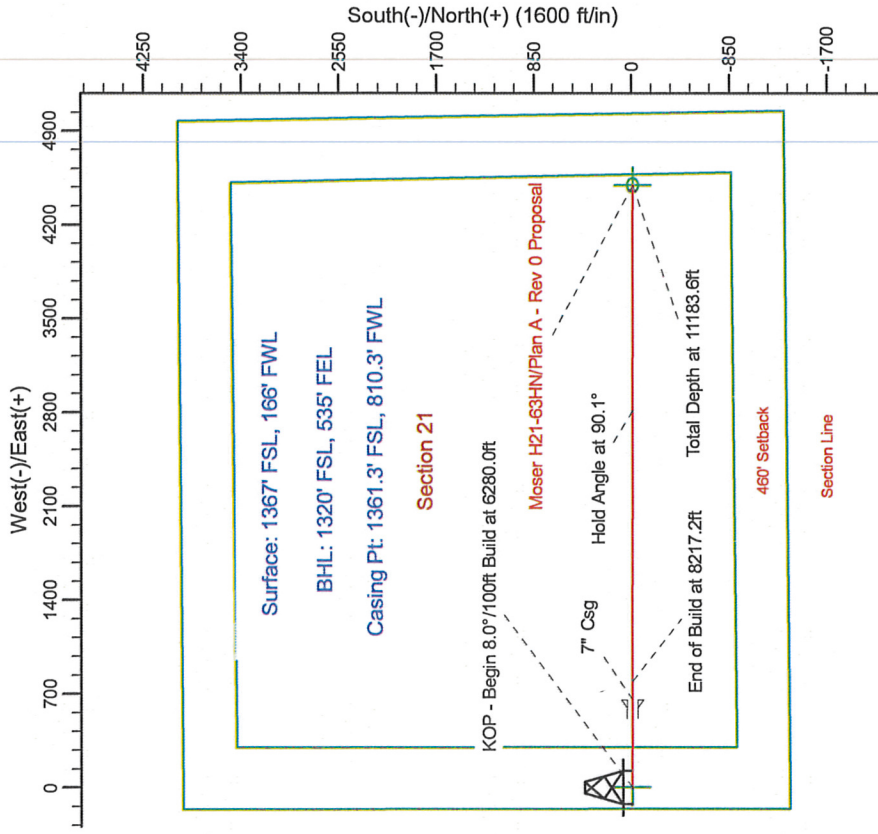
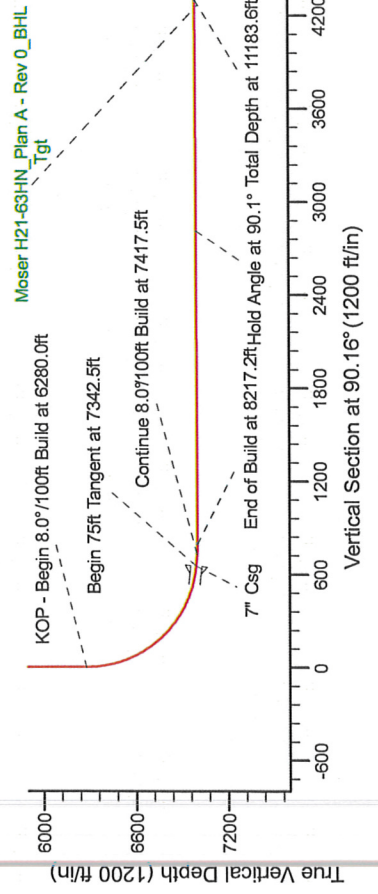
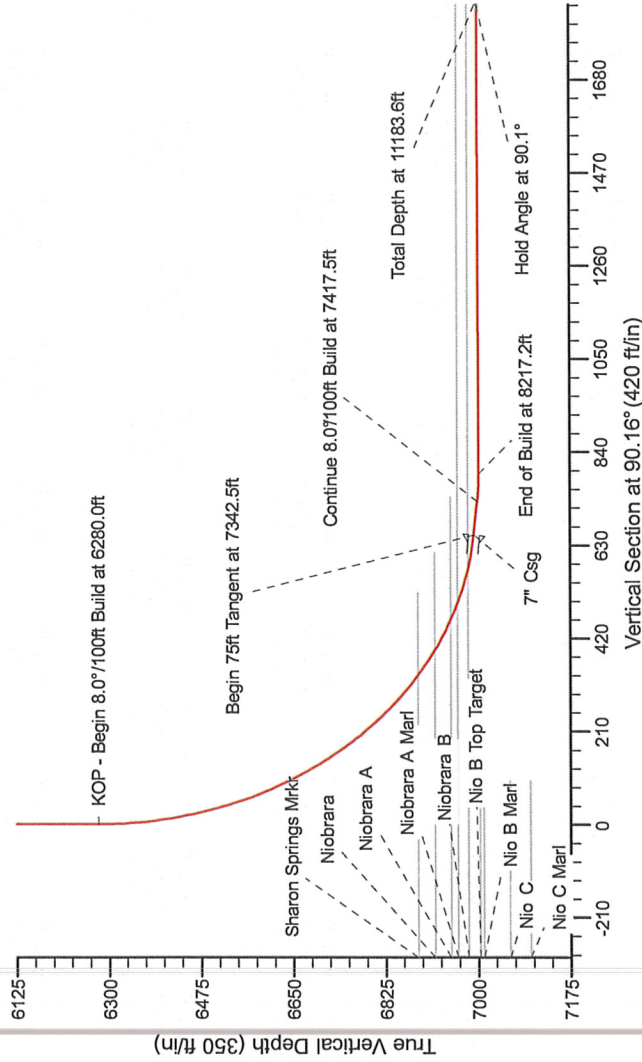


Project: Weld County Colorado (NAD 83)  
Site: Sec. 21, T3N, R65W  
Well: Moser H21-63HN  
Wellbore: Plan A - Rev 0 (PERMITTING PLAN ONLY)  
Design: Plan A - Rev 0 Proposal

SECTION DETAILS

Sec	MD	Inc	Azi	TVD	+N/S	+E/W	Dleg	TFace	Vsect	Target
1	0.0	0.00	0.00	0.0	0.0	0.0	0.00	0.00	0.0	0.0
2	6280.0	0.00	0.00	6280.0	0.0	0.0	0.00	0.00	0.0	0.0
3	7342.5	85.00	90.16	6993.5	-1.8	653.8	8.00	90.16	653.8	653.8
4	7417.5	85.00	90.16	7000.0	-2.0	728.5	8.00	0.00	728.5	728.5
5	7481.2	90.10	90.16	7002.7	-2.2	792.2	8.00	0.00	792.2	792.2
6	11183.6	90.10	90.16	6996.2	-12.5	4494.5	0.00	-5.71	4494.5	4494.5

Moser H21-63HN\_Plan A - Rev 0\_BHL Tgt



**TGM**

Magnetic Model: IGR200510  
Date: 7/25/2011  
Inclination: 8.2°  
Declination: 10.0°  
Field Strength: 5365.2

Grid North is 0.07' East of True North (Grid Converged)  
Magnetic North is 8.2° East of True North (Magnetic Declination)  
To convert a True Direction to a Grid Direction, add 0.07' per 1000 feet.  
To convert a Magnetic Direction to a Grid Direction, add 8.2°.

WELL DETAILS: Moser H21-63HN(NAD83 Geodetic System)

Northing	402160.12	Ground Level:	4865.0
Easting	964438.28	Latitude	40° 12' 26.866 N
Longitude	104° 40' 36.280 W		

Plan: Plan A - Rev 0 Proposal (Moser H21-63HN/Plan A - Rev 0 (PERMITTING PLAN ONLY))

Created By: Erasmo Mendoza Date: 8:53, July 25 2011