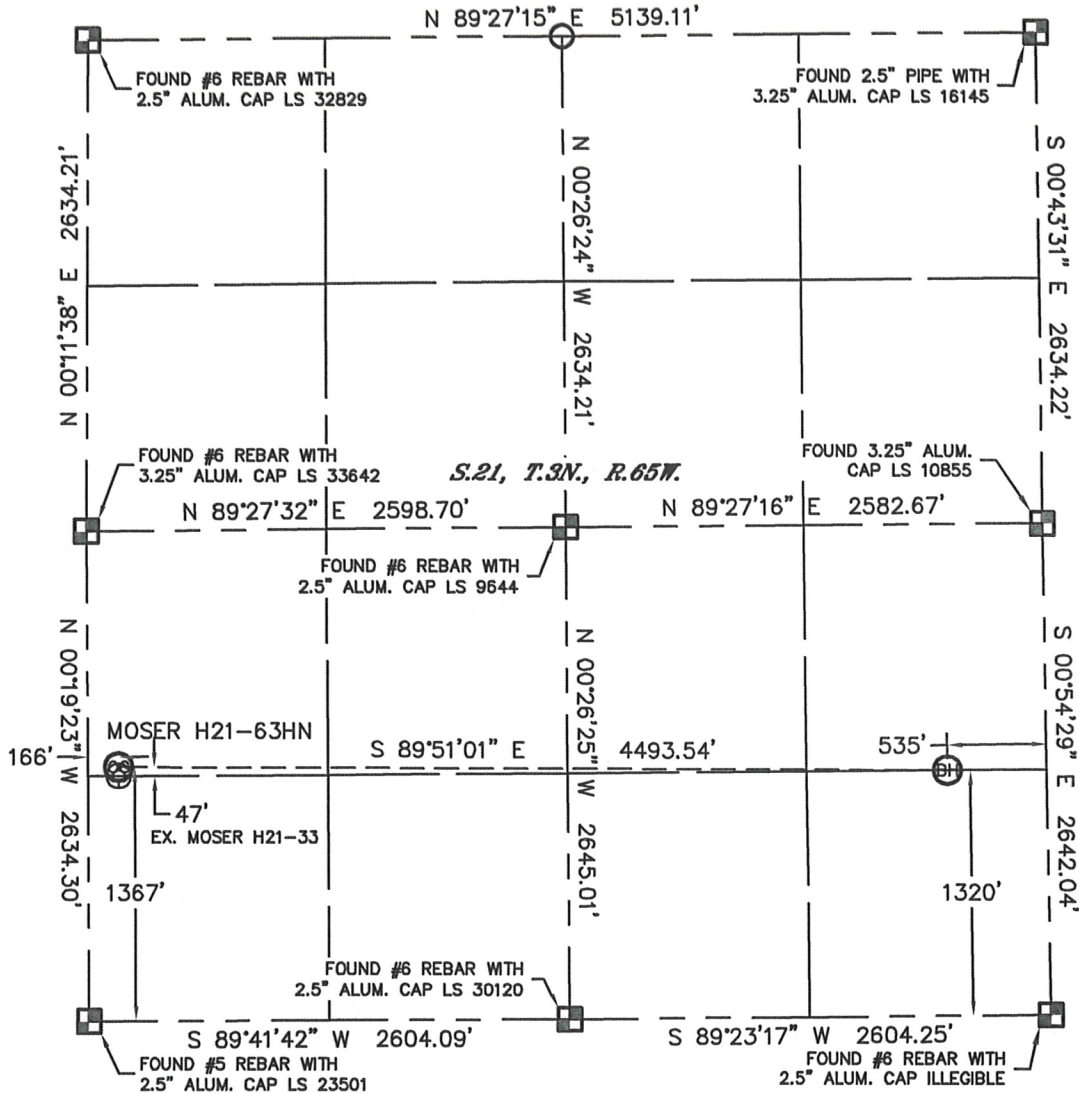


WELL LOCATION CERTIFICATE

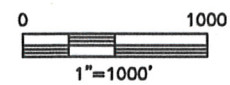
THIS MAP DOES NOT REPRESENT A BOUNDARY SURVEY

SECTION: 21
TOWNSHIP: 3N
RANGE: 65W



In accordance with a request from Ryan Antonio with Noble Energy Inc., Lat40°, Inc. has determined the surface location of the MOSER H21-63HN, to be 1367' from the SOUTH line and 166' from the WEST line and the bottom hole to be 1320' from the SOUTH line and 535' from the EAST line as measured at right angles from the section lines of Section 21, Township 3 North, Range 65 West of the Sixth Principal Meridian, County of Weld, State of Colorado.

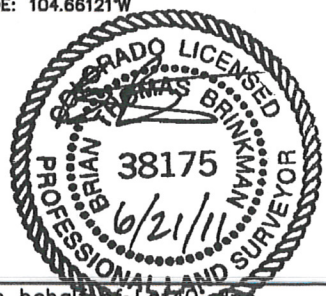
I hereby state that this Well Location Certificate was prepared by me, or under my direct supervision, that the fieldwork was completed on 6/17/11, for and on behalf of Noble Energy Inc. That this is not a Land Survey Plat or an Improvement Survey Plat, and that it is not to be relied upon for establishment of fence, building, or other future improvement lines.



NOTE:

- 1) Bearings shown are Grid Bearings of the Colorado State Plane Coordinate System, North Zone, North American Datum 1983/2007. The lineal dimensions as contained herein are based upon the "U.S. Survey Foot."
- 2) Ground elevations are based on an observed GPS elevation (NAVD 1988 DATUM).
- 3) NEAREST EXISTING WELL: MOSER H21-33, 47'
- 4) IMPROVEMENTS: See LOCATION DRAWING for all visible Improvements within 400' of disturbed area.
- 5) SURFACE USE: RANGELAND / EX. WELL SITE
- 6) INSTRUMENT OPERATOR: ADAM KELLY

SURFACE LOCATION	BOTTOM HOLE
LATITUDE: 40.20746°N	LATITUDE: 40.20731°N
LONGITUDE: 104.67730°W	LONGITUDE: 104.66121°W
PDOP: 2.0	
ELEV: 4865'	
1/4, 1/4: NW1/4SW1/4	
NEAREST PROPERTY LINE: 166' WEST	



NOTE

According to Colorado law, you must commence any legal action based upon any defect in this W.L.C. within three years after you discover such defect. In no event, may any action based upon any defect in this survey be commenced more than ten years after the date of the certificate shown hereon. (13-80-105 C.R.S.)

LEGEND

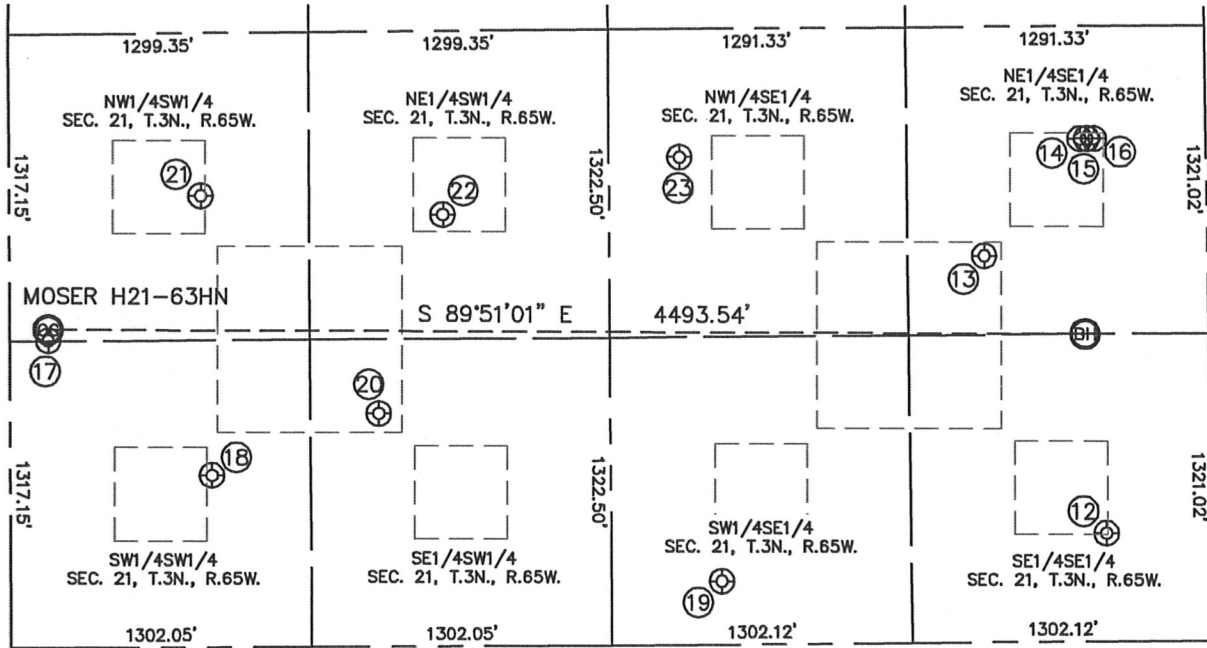
- = ALIQUOT MONUMENT AS DESCRIBED
- = CALCULATED POSITION

Brian T. Brinkman—On behalf of Lat40°, Inc.
Colorado Licensed Professional
Land Surveyor No. 38175 PROJECT#: 2011152

SITE SKETCH

MOSER H21-63HN

SECTION: 21
TOWNSHIP: 3N
RANGE: 65W



⑫
FRANK H21-16
SE1/4SE1/4
465' FSL
457' FEL
LAT-40.20497N
LONG-104.66091W
PDOP: 1.5
ELEV: 4813'

⑬
FRANK UPRR 43-21 #4
NE1/4SE1/4
1660' FSL
964' FEL
LAT-40.20824N
LONG-104.66276W
PDOP: 2.1
ELEV: 4818'

⑭
MOSER 24-21 DIR
NE1/4SE1/4
2158' FSL
543' FEL
LAT-40.20961N
LONG-104.66126W
PDOP: 2.1
ELEV: 4813'

⑮
MOSER 40-21 DIR
NE1/4SE1/4
2159' FSL
514' FEL
LAT-40.20961N
LONG-104.66116W
PDOP: 1.5
ELEV: 4813'

⑯
MOSER 9-21
NE1/4SE1/4
2159' FSL
483' FEL
LAT-40.20962N
LONG-104.66105W
PDOP: 1.5
ELEV: 4813'

⑰
MOSER H21-33
NW1/4SW1/4
1320' FSL
166' FWL
LAT-40.20733N
LONG-104.67730W
PDOP: 2.5
ELEV: 4865'

⑱
FRANK H21-13
SW1/4SW1/4
739' FSL
874' FWL
LAT-40.20573N
LONG-104.67477W
PDOP: 1.4
ELEV: 4851'

⑲
FRANK H21-15
SW1/4SE1/4
273' FSL
2125' FEL
LAT-40.20443N
LONG-104.66688W
PDOP: 1.7
ELEV: 4837'

⑳
FRANK 1-21C
SE1/4SW1/4
1002' FSL
1598' FWL
LAT-40.20644N
LONG-104.67218W
PDOP: 1.8
ELEV: 4841'

㉑
FRANK H21-12
NW1/4SW1/4
1940' FSL
831' FWL
LAT-40.20903N
LONG-104.67491W
PDOP: 4.0
ELEV: 4853'

㉒
FRANK H21-11
NE1/4SW1/4
1854' FSL
1878' FWL
LAT-40.20878N
LONG-104.67117W
PDOP: 1.9
ELEV: 4838'

㉓
FRANK H21-10
NW1/4SE1/4
2095' FSL
2280' FEL
LAT-40.20943N
LONG-104.66748W
PDOP: 1.8
ELEV: 4830'

