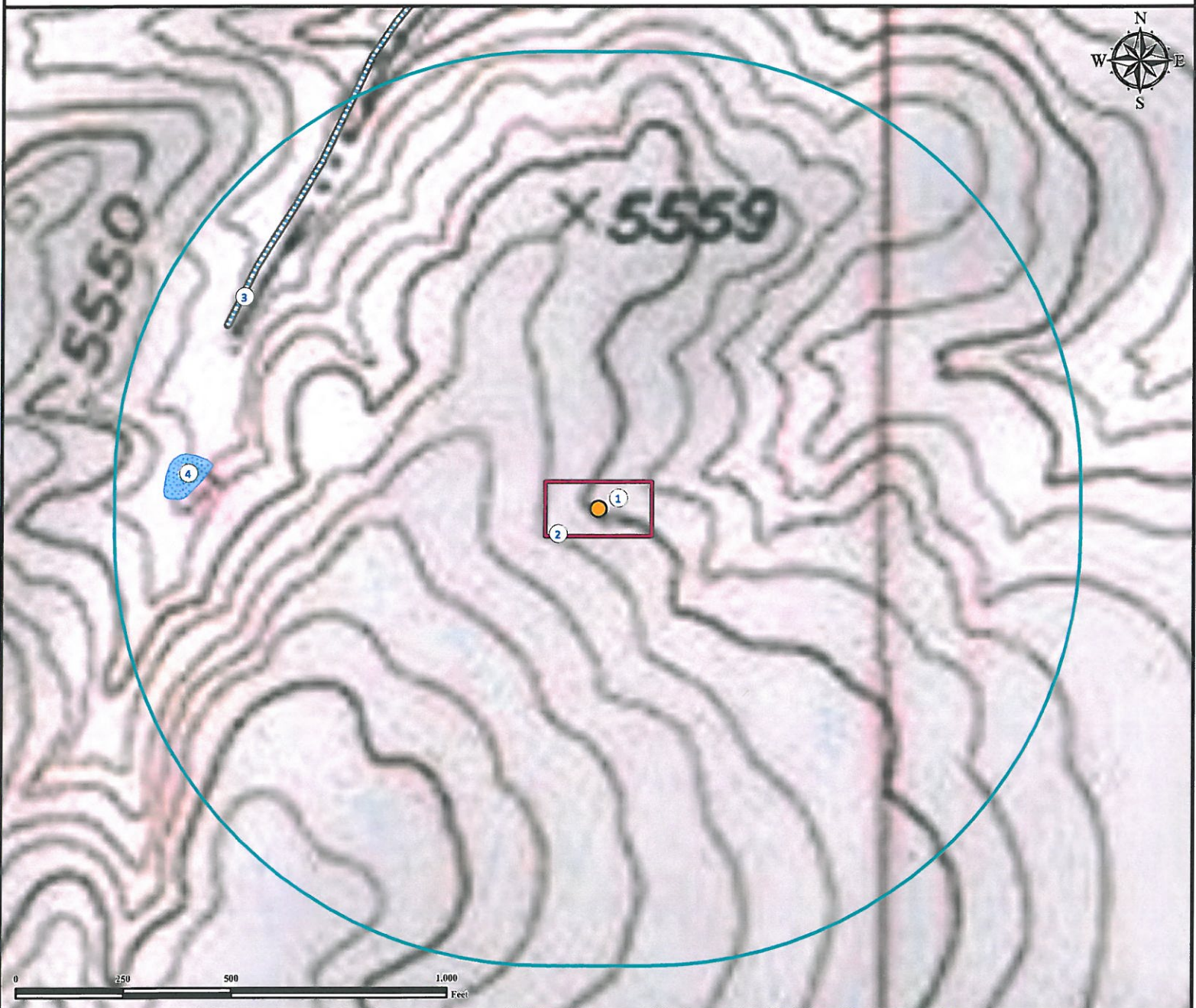


Hydrology Map

BRADBURY 11-35

NE¼ SE¼ SECTION 35, TOWNSHIP 4 SOUTH, RANGE 62 WEST OF THE 6TH PRINCIPAL MERIDIAN



- | | |
|-------------------------------------|----------------------------------|
| 1. Proposed Well BRADBURY 12-35. | 4. Intermittent Pond is ±903' W. |
| 2. Operational Disturbance Area. | |
| 3. Intermittent Stream is ±966' NW. | |

Legend

- | | | |
|---------------|---------------------|------|
| Proposed Well | Disturbance Area | Pond |
| 1000' Radius | Intermittent Stream | |

Reference Location

** All Measurements are Made from
Reference Well BRADBURY 11-35 **

Lat: 39.657737° Long: -104.287142° (NAD83)
Elevation: 5555 Feet



Use our resources to find yours!
www.petro-fs.com
(303) 928-7128

Field Date: 10/05/2011
Drafting Date: 10/14/2011
Drafter: KLM
Checked By: BHF

Data Sources:
TOPO courtesy USGS
Stream and Pond data courtesy of NHD

Prepared for:
**OVERLAND
RESOURCES, LLC**