

NE Cor Sec 23  
1953 Brass Cap,  
0.6' High, Pile of  
Stones  
Lat: 39.695347°  
Long: 108.126444°

1953 Brass Cap,  
0.2' High, Pile of  
Stones, Steel Post  
Lat: 39.695158°  
Long: 108.126422°

T4S, R96W, 6th P.M.

Rio Blanco Co.

S89°51'03"W - 2648.68' (Meas. to True)  
S89°51'03"W - 2648.10' (Meas. to CC)

N89°47'21"W - 2639.69' (Meas.)

Garfield Co.  
COC064814

1953 Brass Cap,  
0.3' High, Pile of  
Stones  
Lat: 39.695158°  
Long: 108.117036°

1953 Brass Cap,  
1.5' High, Fence  
Post  
Lat: 39.695111°  
Long: 108.107661°

Lot 4

Lot 3

Lot 2

Lot 1

TARGET BOTTOM HOLE

COC064814

LINE TABLE

LINE	BEARING	LENGTH
L1	N00°30'07"W	105.36'
L2	N00°04'12"E	68.88'

E 1/4 Cor. Sec. 23,  
1953 Brass Cap, 0.2'  
High, Steel Post  
Lat: 39.688369°  
Long: 108.126478°

W 1/4 Cor. Sec. 24,  
1953 Brass Cap, 0.9'  
High, Steel Post  
Lat: 39.688081°  
Long: 108.126475°

SG 8504E-24 L24 496

Elev. UnGraded Ground = 8185.8'

Elev. Graded Ground = 8180.0'

1953 Brass Cap,  
0.6' High, Steel  
Post  
Lat: 39.687869°  
Long: 108.107669°

1953 Brass Cap,  
0.5' High  
Lat: 39.680569°  
Long: 108.117119°

1953 Brass Cap,  
0.5' High, Pile of  
Stones, Steel Post  
Lat: 39.680594°  
Long: 108.107672°

COC064814

S89°40'00"W - 2641.14' (Meas.)

S89°39'25"W - 2660.17' (Meas.)

1953 Brass Cap  
0.5' High, Mound of  
Stones, Steel Post  
Lat: 39.680547°  
Long: 108.126500°

SEE SHEET 7A FOR EXISTING  
IMPROVEMENT WITHIN 400' OF THE  
PROPOSED WELL DISTURBANCE

LEGEND:

└─┘ = 90° SYMBOL

● = PROPOSED WELL HEAD.

▲ = SECTION CORNERS LOCATED.

PDOP = 1.1

NAD 83 (TARGET BOTTOM HOLE)

LATITUDE = 39°41'34.38" (39.692883)  
LONGITUDE = 108°07'26.70" (108.124083)

NAD 27 (TARGET BOTTOM HOLE)

LATITUDE = 39°41'34.47" (39.692908)  
LONGITUDE = 108°07'24.41" (108.123447)

NAD 83 (SURFACE LOCATION)

LATITUDE = 39°41'06.80" (39.685222)  
LONGITUDE = 108°07'23.04" (108.123067)

NAD 27 (SURFACE LOCATION)

LATITUDE = 39°41'06.89" (39.685247)  
LONGITUDE = 108°07'20.76" (108.122433)

Encana OIL & GAS (USA) INC.

Well location, SG 8504E-24 L24 496, located  
as shown in the NW 1/4 SW 1/4 of Section 24,  
T4S, R96W, 6th P.M., Garfield County, Colorado.

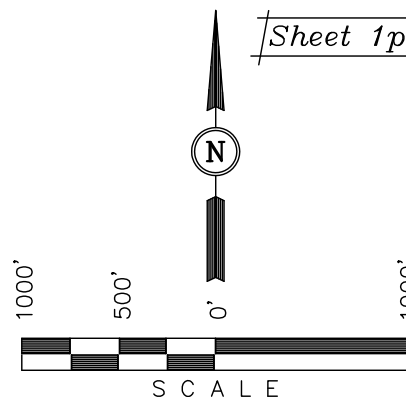
BASIS OF ELEVATION

BENCH MARK (H79) LOCATED IN THE NE 1/4 OF SECTION  
25, T4S, R98W, 6th P.M. TAKEN FROM THE BULL FORK  
QUADRANGLE, COLORADO, 7.5 MINUTE SERIES (TOPO  
GRAPHICAL MAP) PUBLISHED BY THE UNITED STATES  
DEPARTMENT OF THE INTERIOR, GEOLOGICAL SURVEY.  
SAID ELEVATION IS MARKED AS BEING 8535 FEET.

BASIS OF BEARINGS

BASIS OF BEARINGS IS A G.P.S. OBSERVATION.

Sheet 1pp of 11



CERTIFICATE

THIS IS TO CERTIFY THAT THE ABOVE PLAT WAS PREPARED FROM  
FIELD NOTES OF ACTUAL SURVEYS MADE BY ME OR UNDER MY  
SUPERVISION AND THAT THE SAME ARE TRUE AND CORRECT TO THE  
BEST OF MY KNOWLEDGE AND BELIEF

REGISTERED LAND SURVEYOR  
REGISTRATION NO. 17492  
STATE OF COLORADO  
08-09-2011

UINTAH ENGINEERING & LAND SURVEYING  
85 SOUTH 200 EAST - VERNAL, UTAH 84078  
(435) 789-1017

SCALE 1" = 1000'	DATE SURVEYED: 08-18-10	DATE DRAWN: 06-09-11
PARTY B.J. D.B. D.R.B.	REFERENCES G.L.O. PLAT	
WEATHER COOL	FILE Encana OIL & GAS (USA) INC.	