

NE Cor Sec 23  
1953 Brass Cap,  
0.6' High, Pile of  
Stones  
Lat: 39.695347°  
Long: 108.126444°

*T4S, R96W, 6th P.M.*

*Rio Blanco Co.*

$S89^{\circ}51'03''W - 2648.68'$  (Meas. to True)  
 $S89^{\circ}51'03''W - 2648.10'$  (Meas. to CC)

$N89^{\circ}47'21''W - 2639.69'$  (Meas.)

Garfield Co.  
COC064814

1953 Brass Cap,  
0.3' High, Pile of  
Stones  
Lat: 39.695158°  
Long: 108.117036°

1953 Brass Cap,  
1.5' High, Fence  
Post  
Lat: 39.695111°  
Long: 108.107661°

1953 Brass Cap,  
0.2' High, Pile of  
Stones, Steel Post  
Lat: 39.695158°  
Long: 108.126422°

Lot 4

Lot 3

Lot 2

Lot 1

E 1/4 Cor. Sec. 23,  
1953 Brass Cap, 0.2'  
High, Steel Post  
Lat: 39.688369°  
Long: 108.126478°

W 1/4 Cor. Sec. 24,  
1953 Brass Cap, 0.9'  
High, Steel Post  
Lat: 39.688081°  
Long: 108.126475°

1953 Brass Cap,  
0.6' High, Steel  
Post  
Lat: 39.687869°  
Long: 108.107669°

SG 8502E-23 L24 496

*Elev. UnGraded Ground = 8185.1'*

*Elev. Graded Ground = 8180.0'*

NOTE:  
THE PROPOSED BOTTOM HOLE FOR THIS WELL IS  
LOCATED IN THE NW 1/4 NE 1/4 OF SECTION  
23, T4S, R96W, 6th P.M. AT A DISTANCE OF  
898' FNL 1826' FEL. IT BEARS N45°02'26"W  
3929.25' FROM THE PROPOSED WELL HEAD.

1953 Brass Cap,  
0.5' High  
Lat: 39.680569°  
Long: 108.117119°

1953 Brass Cap,  
0.5' High, Pile of  
Stones, Steel Post  
Lat: 39.680594°  
Long: 108.107672°

$S89^{\circ}40'00''W - 2641.14'$  (Meas.)

$S89^{\circ}39'25''W - 2660.17'$  (Meas.)

1953 Brass Cap  
0.5' High, Mound of  
Stones, Steel Post  
Lat: 39.680547°  
Long: 108.126500°

SEE SHEET 7A FOR EXISTING  
IMPROVEMENT WITHIN 400' OF THE  
PROPOSED WELL DISTURBANCE

LEGEND:

|| = 90° SYMBOL

● = PROPOSED WELL HEAD.

▲ = SECTION CORNERS LOCATED.

PDOP = 1.1

NAD 83 (SURFACE LOCATION)

LATITUDE	=	39°41'06.84" (39.685233)
----------	---	--------------------------

LONGITUDE = 108°07'23.13" (108.123092)

NAD 27 (SURFACE LOCATION)

LATITUDE = 39°41'06.93" (39.685258)

Encana OIL &amp; GAS (USA) INC.

Well location, SG 8502E-23 L24 496 (SURFACE LOCATION), located as shown in the NW 1/4 SW 1/4 of Section 24, T4S, R96W, 6th P.M., Garfield County, Colorado.

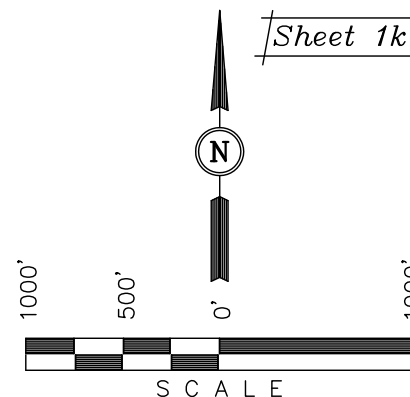
### BASIS OF ELEVATION

BENCH MARK (H79) LOCATED IN THE NE 1/4 OF SECTION 25, T4S, R98W, 6th P.M. TAKEN FROM THE BULL FORK QUADRANGLE, COLORADO, 7.5 MINUTE SERIES (TOPO GRAPHICAL MAP) PUBLISHED BY THE UNITED STATES DEPARTMENT OF THE INTERIOR, GEOLOGICAL SURVEY. SAID ELEVATION IS MARKED AS BEING 8535 FEET.

## BASIS OF BEARINGS

BASIS OF BEARINGS IS A G.P.S. OBSERVATION.

Sheet 1kk of 11



# CERTIFICATE

THIS IS TO CERTIFY THAT THE ABOVE PLAT WAS PREPARED FROM  
FIELD NOTES OF ACTUAL SURVEYS MADE BY ME OR UNDER MY  
SUPERVISION AND THAT THE SAME ARE TRUE AND CORRECT TO THE  
BEST OF MY KNOWLEDGE AND BELIEF.

REGISTERED LAND SURVEYOR  
REGISTRATION NO. 17492  
STATE OF COLORADO

UINTAH ENGINEERING & LAND SURVEYING  
85 SOUTH 200 EAST - VERNAL, UTAH 84078  
(435) 789-1017

SCALE 1" = 1000'	DATE SURVEYED: 08-18-10	DATE DRAWN: 06-09-11
PARTY B.J.      D.B.      D.R.B.	REFERENCES G.L.O. PLAT	
WEATHER COOL	FILE Encana OIL & GAS (USA) INC.	

T4S, R96W, 6th P.M.

Encana OIL & GAS (USA) INC.

1953 Brass Cap,  
0.8' High, Pile of  
Stones  
Lat: 39.695233°  
Long: 108.145544°

1953 Brass Cap,  
1.1' High, Small  
Pile of Stones  
Lat: 39.695336°  
Long: 108.131125°

1953 Brass Cap,  
0.6' High, Pile of  
Stones  
Lat: 39.695347°  
Long: 108.126444°

Rio Blanco Co.

S89°07'26"W -  
1370.45' (Meas.)

S89°05'03"W -  
1371.03' (Meas.)

S89°48'15"W -  
1318.16' (Meas.)

S89°41'16"W -  
1317.81' (Meas.)

COC064814

1978 Brass Cap,  
0.5' High, Stones  
Lat: 39.695283°  
Long: 108.140678°

1953 Brass Cap,  
1.1' High, Small  
Pile of Stones  
Lat: 39.695333°  
Long: 108.135808°

Garfield Co.

SG 8502E-23 L24 496  
TARGET BOTTOM HOLE  
Lot 1

NW Cor Sec 24  
1953 Brass Cap,  
0.2' High, Pile of  
Stones, Steel Post  
Lat: 39.695158°  
Long: 108.126422°

1826'

NOTE:  
THE PROPOSED WELL HEAD IS LOCATED IN  
THE NW 1/4 SW 1/4 OF SECTION 24, T4S,  
R96W, 6th P.M. AT A DISTANCE OF 1705'  
FSL 956' FWL. IT BEARS S45°02'26"E  
3929.25' FROM THE TARGET BOTTOM HOLE.

Lot 2

23

31.68'  
(G.L.O.)  
True  
Position

1958 Brass Cap 0.5'  
High, Steel Post  
Lat: 39.687828°  
Long: 108.145436°

1978 Brass Cap  
0.3' High, Stones  
Lat: 39.687903°  
Long: 108.140675°

S87°20'59"W -  
1341.33' (Meas.)

Lot 6

Lot 5

Lot 4

Lot 7

E 1/4 Cor. Sec. 23,  
1953 Brass Cap, 0.2'  
High, Steel Post  
Lat: 39.688369°  
Long: 108.126478°

W 1/4 Cor. Sec. 24,  
1953 Brass Cap, 0.9'  
High, Steel Post  
Lat: 39.688081°  
Long: 108.126475°

L1

L2

L3

L4

L5

L6

L7

L8

L9

L10

L11

L12

L13

L14

L15

L16

L17

L18

L19

L20

L21

L22

L23

L24

L25

L26

L27

L28

L29

L30

L31

L32

L33

L34

L35

L36

L37

L38

L39

L40

L41

L42

L43

L44

L45

L46

L47

L48

L49

L50

L51

L52

L53

L54

L55

L56

L57

L58

L59

L60

L61

L62

L63

L64

L65

L66

L67

L68

L69

L70

L71

L72

L73

L74

L75

L76

L77

L78

L79

L80

L81

L82

L83

L84

L85

L86

L87

L88

L89

L90

L91

L92

L93

L94

L95

L96

L97

L98

L99

L100

L101

L102

L103

L104

L105

L106

L107

L108

L109

L110

L111

L112

L113

L114

L115

L116

L117

L118

L119

L120

L121

L122

L123

L124

L125

L126

L127

L128

L129

L130

L131

L132

L133

L134

L135

L136

L137

L138

L139

L140

L141

L142

L143

L144

L145

L146

L147

L148

L149

L150

L151

L152

L153

L154

L155

L156

L157

L158

L159

L160

L161

L162

L163

L164

L165

L166

L167

L168

L169

L170

L171

L172

L173

L174

L175

L176

L177

L178

L179

L180

L181

L182

L183

L184

L185

L186

L187

L188

L189

L190

L191

L192

L193

L194

L195

L196

L197

L198

L199

L200

L201

L202

L203

L204

L205

L206

L207

L208

L209

L210

L211

L212

L213

L214

L215

L216

L217

L218

L219

L220

L221

L222

L223

L224

L225

L226

L227

L228

L229

L230

L231

L232

L233

L234

L235

L236

L237

L238

L239

L240

L241

L242

L243

L244

L245

L246

L247

L248

L249

L250

L251

L252

L253

L254

L255

L256

L257

L258

L259

L260

L261

L262

L2