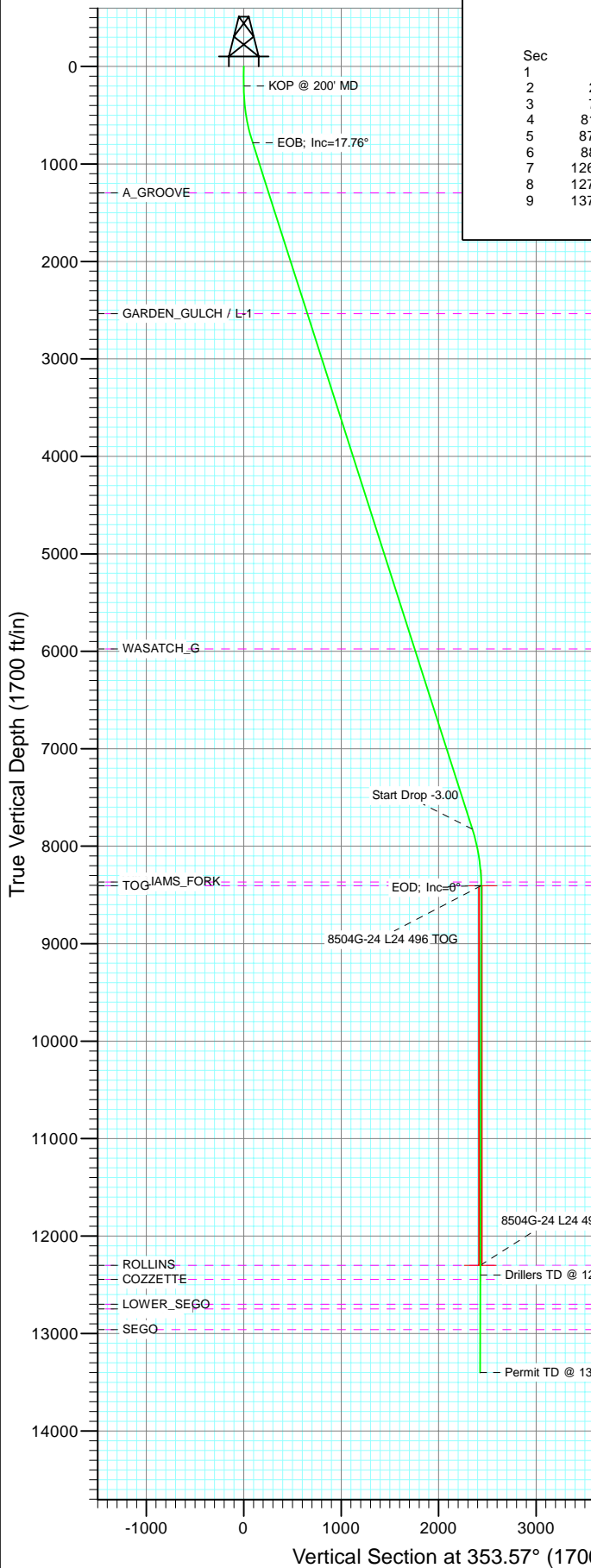
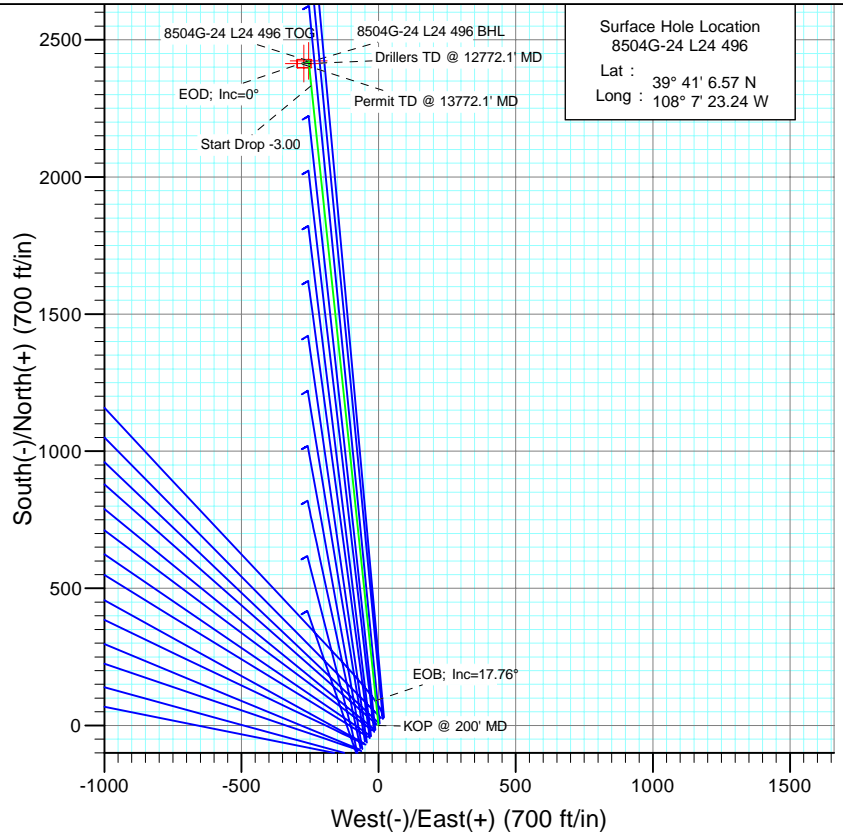




Project: Story Gulch  
Site: L24 496  
Well: 8504G-24 L24 496  
Wellbore: DD  
Design: Plan #1



SECTION DETAILS										
Sec	MD	Inc	Azi	TVD	+N/-S	+E/-W	Dleg	TFace	VSect	Target
1	0.0	0.00	0.00	0.0	0.0	0.0	0.00	0.00	0.0	
2	200.0	0.00	0.00	200.0	0.0	0.0	0.00	0.00	0.0	
3	791.9	17.76	353.99	782.4	90.5	-9.5	3.00	353.99	91.0	
4	8185.2	17.76	353.99	7823.6	2332.8	-245.5	0.00	0.00	2345.6	
5	8777.1	0.00	0.00	8406.0	2423.3	-255.0	3.00	180.00	2436.6	8504G-24 L24 496 TOG
6	8895.2	0.30	239.49	8524.1	2423.1	-255.3	0.25	239.49	2436.5	
7	12672.1	0.30	239.49	12301.0	2413.3	-272.0	0.00	0.00	2428.5	8504G-24 L24 496 BHL
8	12772.1	0.30	239.49	12401.0	2413.0	-272.5	0.00	0.00	2428.3	
9	13772.1	0.30	239.49	13401.0	2410.4	-276.9	0.00	0.00	2426.2	



Surface Hole Location  
8504G-24 L24 496  
Lat : 39° 41' 6.57 N  
Long : 108° 7' 23.24 W



Azimuths to True North  
Magnetic North: 10.44°

Magnetic Field  
Strength: 52326.5nT  
Dip Angle: 65.87°  
Date: 5/17/2011  
Model: IGRF2010

#### FORMATION TOP DETAILS

TVDPath	MDPath	Formation
1297.0	1332.2	A_GROOVE
2535.0	2632.1	GARDEN_GULCH / L-1
5976.0	6245.2	WASATCH_G
8366.0	8737.1	WILLIAMS_FORK
8406.0	8777.1	TOG
12301.0	12672.1	ROLLINS
12445.0	12816.1	COZZETTE
12700.0	13071.1	LOWER_SEGO
12748.0	13119.1	CORCORAN
12960.0	13331.1	SEGO

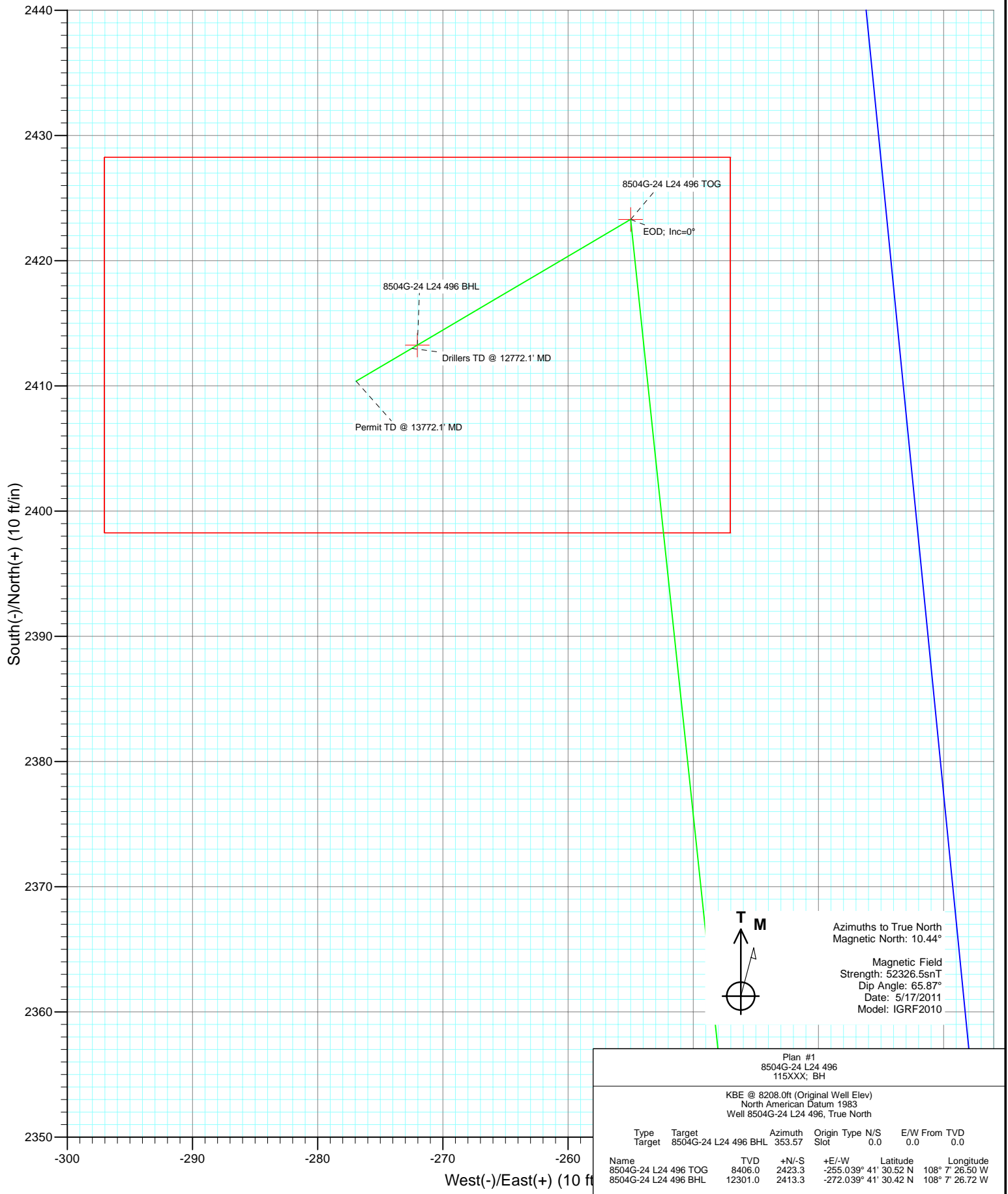
Plan #1  
8504G-24 L24 496  
115XXX; BH

KBE @ 8208.0ft (Original Well Elev)  
North American Datum 1983  
Well 8504G-24 L24 496, True North

Type	Target	Target	Azimuth	Origin	Type	N/S	E/W	From	TVD
	Target	8504G-24 L24 496 BHL	353.57	Slot		0.0	0.0		0.0
Name									
8504G-24 L24 496 TOG			8406.0	2423.3	+N/-S	-255.039°	41'	30.52 N	108° 7' 26.50 W
8504G-24 L24 496 BHL			12301.0	2413.3	+E/-W	-272.039°	41'	30.42 N	108° 7' 26.72 W



Project: Story Gulch  
 Site: L24 496  
 Well: 8504G-24 L24 496  
 Wellbore: DD  
 Design: Plan #1



Azimuths to True North  
 Magnetic North: 10.44°  
 Magnetic Field  
 Strength: 52326.5nT  
 Dip Angle: 65.87°  
 Date: 5/17/2011  
 Model: IGRF2010

Plan #1							
8504G-24 L24 496							
115XXX; BH							
KBE @ 8208.0ft (Original Well Elev)							
North American Datum 1983							
Well 8504G-24 L24 496, True North							
Type	Target	Azimuth	Origin	Type	N/S	E/W	TVD
Target	Target	353.57	Slot		0.0	0.0	0.0
Name	8504G-24 L24 496 TOG	TVD	+N/-S	+E/-W	Latitude	Longitude	
	8504G-24 L24 496 TOG	8406.0	2423.3	-255.039° 41'	30.52 N	108° 7' 26.50 W	
	8504G-24 L24 496 BHL	12301.0	2413.3	-272.039° 41'	30.42 N	108° 7' 26.72 W	

# Cathedral Energy Services

## Planning Report

<b>Database:</b>	EDM 5000.1 US Multi Users DB	<b>Local Co-ordinate Reference:</b>	Well 8504G-24 L24 496
<b>Company:</b>	EnCana Oil & Gas (USA) Inc	<b>TVD Reference:</b>	KBE @ 8208.0ft (Original Well Elev)
<b>Project:</b>	Story Gulch	<b>MD Reference:</b>	KBE @ 8208.0ft (Original Well Elev)
<b>Site:</b>	L24 496	<b>North Reference:</b>	True
<b>Well:</b>	8504G-24 L24 496	<b>Survey Calculation Method:</b>	Minimum Curvature
<b>Wellbore:</b>	DD		
<b>Design:</b>	Plan #1		

<b>Project</b>	Story Gulch		
<b>Map System:</b>	US State Plane 1983	<b>System Datum:</b>	Mean Sea Level
<b>Geo Datum:</b>	North American Datum 1983		
<b>Map Zone:</b>	Colorado Central Zone		

<b>Site</b>	L24 496			
<b>Site Position:</b>		<b>Northing:</b>	1,685,024.52 ft	<b>Latitude:</b> 39° 41' 5.72 N
<b>From:</b>	Lat/Long	<b>Easting:</b>	2,261,789.15 ft	<b>Longitude:</b> 108° 7' 23.99 W
<b>Position Uncertainty:</b>	0.0 ft	<b>Slot Radius:</b>	13.200 in	<b>Grid Convergence:</b> -1.65 °

<b>Well</b>	8504G-24 L24 496			
<b>Well Position</b>	<b>+N/-S</b>	0.0 ft	<b>Northing:</b>	1,685,108.78 ft
	<b>+E/-W</b>	0.0 ft	<b>Easting:</b>	2,261,850.24 ft
<b>Position Uncertainty</b>		0.0 ft	<b>Wellhead Elevation:</b>	ft
			<b>Ground Level:</b>	8,193.0 ft

<b>Wellbore</b>	DD				
<b>Magnetics</b>	<b>Model Name</b>	<b>Sample Date</b>	<b>Declination (°)</b>	<b>Dip Angle (°)</b>	<b>Field Strength (nT)</b>
	IGRF2010	5/17/2011	10.44	65.87	52,327

<b>Design</b>	Plan #1			
<b>Audit Notes:</b>				
<b>Version:</b>	<b>Phase:</b>	PLAN	<b>Tie On Depth:</b>	0.0
<b>Vertical Section:</b>	<b>Depth From (TVD) (ft)</b>	<b>+N/-S (ft)</b>	<b>+E/-W (ft)</b>	<b>Direction (°)</b>
	0.0	0.0	0.0	353.57

<b>Plan Sections</b>										
Measured Depth (ft)	Inclination (°)	Azimuth (°)	Vertical Depth (ft)	+N/-S (ft)	+E/-W (ft)	Dogleg Rate (°/100ft)	Build Rate (°/100ft)	Turn Rate (°/100ft)	TFO (°)	Target
0.0	0.00	0.00	0.0	0.0	0.0	0.00	0.00	0.00	0.00	
200.0	0.00	0.00	200.0	0.0	0.0	0.00	0.00	0.00	0.00	
791.9	17.76	353.99	782.4	90.5	-9.5	3.00	3.00	0.00	353.99	
8,185.2	17.76	353.99	7,823.6	2,332.8	-245.5	0.00	0.00	0.00	0.00	
8,777.1	0.00	0.00	8,406.0	2,423.3	-255.0	3.00	-3.00	0.00	180.00	8504G-24 L24 496 TC
8,895.2	0.30	239.49	8,524.1	2,423.1	-255.3	0.25	0.25	-102.01	239.49	
12,672.1	0.30	239.49	12,301.0	2,413.3	-272.0	0.00	0.00	0.00	0.00	8504G-24 L24 496 Bt
12,772.1	0.30	239.49	12,401.0	2,413.0	-272.5	0.00	0.00	0.00	0.00	
13,772.1	0.30	239.49	13,401.0	2,410.4	-276.9	0.00	0.00	0.00	0.00	

# Cathedral Energy Services

## Planning Report

<b>Database:</b>	EDM 5000.1 US Multi Users DB	<b>Local Co-ordinate Reference:</b>	Well 8504G-24 L24 496
<b>Company:</b>	EnCana Oil & Gas (USA) Inc	<b>TVD Reference:</b>	KBE @ 8208.0ft (Original Well Elev)
<b>Project:</b>	Story Gulch	<b>MD Reference:</b>	KBE @ 8208.0ft (Original Well Elev)
<b>Site:</b>	L24 496	<b>North Reference:</b>	True
<b>Well:</b>	8504G-24 L24 496	<b>Survey Calculation Method:</b>	Minimum Curvature
<b>Wellbore:</b>	DD		
<b>Design:</b>	Plan #1		

### Planned Survey

Measured Depth (ft)	Inclination (°)	Azimuth (°)	Vertical Depth (ft)	+N/-S (ft)	+E/-W (ft)	Vertical Section (ft)	Dogleg Rate (°/100ft)	Build Rate (°/100ft)	Comments / Formations
0.0	0.00	0.00	0.0	0.0	0.0	0.0	0.00	0.00	
100.0	0.00	0.00	100.0	0.0	0.0	0.0	0.00	0.00	
200.0	0.00	0.00	200.0	0.0	0.0	0.0	0.00	0.00	KOP @ 200' MD
300.0	3.00	353.99	300.0	2.6	-0.3	2.6	3.00	3.00	
400.0	6.00	353.99	399.6	10.4	-1.1	10.5	3.00	3.00	
500.0	9.00	353.99	498.8	23.4	-2.5	23.5	3.00	3.00	
600.0	12.00	353.99	597.1	41.5	-4.4	41.7	3.00	3.00	
700.0	15.00	353.99	694.3	64.7	-6.8	65.1	3.00	3.00	
791.9	17.76	353.99	782.4	90.5	-9.5	91.0	3.00	3.00	EOB; Inc=17.76°
800.0	17.76	353.99	790.2	92.9	-9.8	93.5	0.00	0.00	
900.0	17.76	353.99	885.4	123.3	-13.0	124.0	0.00	0.00	
1,000.0	17.76	353.99	980.7	153.6	-16.2	154.4	0.00	0.00	
1,100.0	17.76	353.99	1,075.9	183.9	-19.4	184.9	0.00	0.00	
1,200.0	17.76	353.99	1,171.1	214.3	-22.5	215.4	0.00	0.00	
1,300.0	17.76	353.99	1,266.4	244.6	-25.7	245.9	0.00	0.00	
1,332.2	17.76	353.99	1,297.0	254.3	-26.8	255.7	0.00	0.00	A_GROOVE
1,400.0	17.76	353.99	1,361.6	274.9	-28.9	276.4	0.00	0.00	
1,500.0	17.76	353.99	1,456.8	305.3	-32.1	306.9	0.00	0.00	
1,600.0	17.76	353.99	1,552.1	335.6	-35.3	337.4	0.00	0.00	
1,700.0	17.76	353.99	1,647.3	365.9	-38.5	367.9	0.00	0.00	
1,800.0	17.76	353.99	1,742.5	396.2	-41.7	398.4	0.00	0.00	
1,900.0	17.76	353.99	1,837.8	426.6	-44.9	428.9	0.00	0.00	
2,000.0	17.76	353.99	1,933.0	456.9	-48.1	459.4	0.00	0.00	
2,100.0	17.76	353.99	2,028.3	487.2	-51.3	489.9	0.00	0.00	
2,200.0	17.76	353.99	2,123.5	517.6	-54.5	520.4	0.00	0.00	
2,300.0	17.76	353.99	2,218.7	547.9	-57.7	550.9	0.00	0.00	
2,400.0	17.76	353.99	2,314.0	578.2	-60.8	581.4	0.00	0.00	
2,500.0	17.76	353.99	2,409.2	608.5	-64.0	611.9	0.00	0.00	
2,600.0	17.76	353.99	2,504.4	638.9	-67.2	642.4	0.00	0.00	
2,632.1	17.76	353.99	2,535.0	648.6	-68.3	652.2	0.00	0.00	GARDEN_GULCH / L-1
2,700.0	17.76	353.99	2,599.7	669.2	-70.4	672.9	0.00	0.00	
2,800.0	17.76	353.99	2,694.9	699.5	-73.6	703.4	0.00	0.00	
2,900.0	17.76	353.99	2,790.1	729.9	-76.8	733.9	0.00	0.00	
3,000.0	17.76	353.99	2,885.4	760.2	-80.0	764.4	0.00	0.00	
3,100.0	17.76	353.99	2,980.6	790.5	-83.2	794.9	0.00	0.00	
3,200.0	17.76	353.99	3,075.9	820.8	-86.4	825.4	0.00	0.00	
3,300.0	17.76	353.99	3,171.1	851.2	-89.6	855.9	0.00	0.00	
3,400.0	17.76	353.99	3,266.3	881.5	-92.8	886.4	0.00	0.00	
3,500.0	17.76	353.99	3,361.6	911.8	-96.0	916.8	0.00	0.00	
3,600.0	17.76	353.99	3,456.8	942.2	-99.1	947.3	0.00	0.00	
3,700.0	17.76	353.99	3,552.0	972.5	-102.3	977.8	0.00	0.00	
3,800.0	17.76	353.99	3,647.3	1,002.8	-105.5	1,008.3	0.00	0.00	
3,900.0	17.76	353.99	3,742.5	1,033.2	-108.7	1,038.8	0.00	0.00	
4,000.0	17.76	353.99	3,837.7	1,063.5	-111.9	1,069.3	0.00	0.00	
4,100.0	17.76	353.99	3,933.0	1,093.8	-115.1	1,099.8	0.00	0.00	
4,200.0	17.76	353.99	4,028.2	1,124.1	-118.3	1,130.3	0.00	0.00	
4,300.0	17.76	353.99	4,123.5	1,154.5	-121.5	1,160.8	0.00	0.00	
4,400.0	17.76	353.99	4,218.7	1,184.8	-124.7	1,191.3	0.00	0.00	
4,500.0	17.76	353.99	4,313.9	1,215.1	-127.9	1,221.8	0.00	0.00	
4,600.0	17.76	353.99	4,409.2	1,245.5	-131.1	1,252.3	0.00	0.00	
4,700.0	17.76	353.99	4,504.4	1,275.8	-134.2	1,282.8	0.00	0.00	
4,800.0	17.76	353.99	4,599.6	1,306.1	-137.4	1,313.3	0.00	0.00	

# Cathedral Energy Services

## Planning Report

<b>Database:</b>	EDM 5000.1 US Multi Users DB	<b>Local Co-ordinate Reference:</b>	Well 8504G-24 L24 496
<b>Company:</b>	EnCana Oil & Gas (USA) Inc	<b>TVD Reference:</b>	KBE @ 8208.0ft (Original Well Elev)
<b>Project:</b>	Story Gulch	<b>MD Reference:</b>	KBE @ 8208.0ft (Original Well Elev)
<b>Site:</b>	L24 496	<b>North Reference:</b>	True
<b>Well:</b>	8504G-24 L24 496	<b>Survey Calculation Method:</b>	Minimum Curvature
<b>Wellbore:</b>	DD		
<b>Design:</b>	Plan #1		

### Planned Survey

Measured Depth (ft)	Inclination (°)	Azimuth (°)	Vertical Depth (ft)	+N/-S (ft)	+E/-W (ft)	Vertical Section (ft)	Dogleg Rate (°/100ft)	Build Rate (°/100ft)	Comments / Formations
4,900.0	17.76	353.99	4,694.9	1,336.4	-140.6	1,343.8	0.00	0.00	
5,000.0	17.76	353.99	4,790.1	1,366.8	-143.8	1,374.3	0.00	0.00	
5,100.0	17.76	353.99	4,885.3	1,397.1	-147.0	1,404.8	0.00	0.00	
5,200.0	17.76	353.99	4,980.6	1,427.4	-150.2	1,435.3	0.00	0.00	
5,300.0	17.76	353.99	5,075.8	1,457.8	-153.4	1,465.8	0.00	0.00	
5,400.0	17.76	353.99	5,171.1	1,488.1	-156.6	1,496.3	0.00	0.00	
5,500.0	17.76	353.99	5,266.3	1,518.4	-159.8	1,526.8	0.00	0.00	
5,600.0	17.76	353.99	5,361.5	1,548.8	-163.0	1,557.3	0.00	0.00	
5,700.0	17.76	353.99	5,456.8	1,579.1	-166.2	1,587.8	0.00	0.00	
5,800.0	17.76	353.99	5,552.0	1,609.4	-169.4	1,618.3	0.00	0.00	
5,900.0	17.76	353.99	5,647.2	1,639.7	-172.5	1,648.7	0.00	0.00	
6,000.0	17.76	353.99	5,742.5	1,670.1	-175.7	1,679.2	0.00	0.00	
6,100.0	17.76	353.99	5,837.7	1,700.4	-178.9	1,709.7	0.00	0.00	
6,200.0	17.76	353.99	5,932.9	1,730.7	-182.1	1,740.2	0.00	0.00	
6,245.2	17.76	353.99	5,976.0	1,744.4	-183.6	1,754.0	0.00	0.00	WASATCH_G
6,300.0	17.76	353.99	6,028.2	1,761.1	-185.3	1,770.7	0.00	0.00	
6,400.0	17.76	353.99	6,123.4	1,791.4	-188.5	1,801.2	0.00	0.00	
6,500.0	17.76	353.99	6,218.7	1,821.7	-191.7	1,831.7	0.00	0.00	
6,600.0	17.76	353.99	6,313.9	1,852.0	-194.9	1,862.2	0.00	0.00	
6,700.0	17.76	353.99	6,409.1	1,882.4	-198.1	1,892.7	0.00	0.00	
6,800.0	17.76	353.99	6,504.4	1,912.7	-201.3	1,923.2	0.00	0.00	
6,900.0	17.76	353.99	6,599.6	1,943.0	-204.5	1,953.7	0.00	0.00	
7,000.0	17.76	353.99	6,694.8	1,973.4	-207.7	1,984.2	0.00	0.00	
7,100.0	17.76	353.99	6,790.1	2,003.7	-210.8	2,014.7	0.00	0.00	
7,200.0	17.76	353.99	6,885.3	2,034.0	-214.0	2,045.2	0.00	0.00	
7,300.0	17.76	353.99	6,980.5	2,064.4	-217.2	2,075.7	0.00	0.00	
7,400.0	17.76	353.99	7,075.8	2,094.7	-220.4	2,106.2	0.00	0.00	
7,500.0	17.76	353.99	7,171.0	2,125.0	-223.6	2,136.7	0.00	0.00	
7,600.0	17.76	353.99	7,266.3	2,155.3	-226.8	2,167.2	0.00	0.00	
7,700.0	17.76	353.99	7,361.5	2,185.7	-230.0	2,197.7	0.00	0.00	
7,800.0	17.76	353.99	7,456.7	2,216.0	-233.2	2,228.2	0.00	0.00	
7,900.0	17.76	353.99	7,552.0	2,246.3	-236.4	2,258.7	0.00	0.00	
8,000.0	17.76	353.99	7,647.2	2,276.7	-239.6	2,289.2	0.00	0.00	
8,100.0	17.76	353.99	7,742.4	2,307.0	-242.8	2,319.7	0.00	0.00	
8,185.2	17.76	353.99	7,823.6	2,332.8	-245.5	2,345.6	0.00	0.00	Start Drop -3.00
8,200.0	17.31	353.99	7,837.7	2,337.3	-245.9	2,350.1	3.00	-3.00	
8,300.0	14.31	353.99	7,933.9	2,364.4	-248.8	2,377.3	3.00	-3.00	
8,400.0	11.31	353.99	8,031.4	2,386.4	-251.1	2,399.5	3.00	-3.00	
8,500.0	8.31	353.99	8,129.9	2,403.3	-252.9	2,416.6	3.00	-3.00	
8,600.0	5.31	353.99	8,229.2	2,415.1	-254.1	2,428.4	3.00	-3.00	
8,700.0	2.31	353.99	8,329.0	2,421.8	-254.8	2,435.1	3.00	-3.00	
8,737.1	1.20	353.99	8,366.0	2,422.9	-255.0	2,436.2	3.00	-3.00	WILLIAMS_FORK
8,777.1	0.00	0.00	8,406.0	2,423.3	-255.0	2,436.6	3.00	-3.00	EOD; Inc=0° - TOG - 8504G-24 L24 496 TOG
8,800.0	0.06	239.49	8,428.9	2,423.3	-255.0	2,436.6	0.25	0.25	
8,895.2	0.30	239.49	8,524.1	2,423.1	-255.3	2,436.5	0.25	0.25	
8,900.0	0.30	239.49	8,528.9	2,423.1	-255.3	2,436.5	0.00	0.00	
9,000.0	0.30	239.49	8,628.9	2,422.9	-255.7	2,436.3	0.00	0.00	
9,100.0	0.30	239.49	8,728.9	2,422.6	-256.2	2,436.1	0.00	0.00	
9,200.0	0.30	239.49	8,828.9	2,422.3	-256.6	2,435.8	0.00	0.00	
9,300.0	0.30	239.49	8,928.9	2,422.1	-257.1	2,435.6	0.00	0.00	
9,400.0	0.30	239.49	9,028.9	2,421.8	-257.5	2,435.4	0.00	0.00	
9,500.0	0.30	239.49	9,128.9	2,421.6	-257.9	2,435.2	0.00	0.00	

# Cathedral Energy Services

## Planning Report

<b>Database:</b>	EDM 5000.1 US Multi Users DB	<b>Local Co-ordinate Reference:</b>	Well 8504G-24 L24 496
<b>Company:</b>	EnCana Oil & Gas (USA) Inc	<b>TVD Reference:</b>	KBE @ 8208.0ft (Original Well Elev)
<b>Project:</b>	Story Gulch	<b>MD Reference:</b>	KBE @ 8208.0ft (Original Well Elev)
<b>Site:</b>	L24 496	<b>North Reference:</b>	True
<b>Well:</b>	8504G-24 L24 496	<b>Survey Calculation Method:</b>	Minimum Curvature
<b>Wellbore:</b>	DD		
<b>Design:</b>	Plan #1		

### Planned Survey

Measured Depth (ft)	Inclination (°)	Azimuth (°)	Vertical Depth (ft)	+N/-S (ft)	+E/-W (ft)	Vertical Section (ft)	Dogleg Rate (°/100ft)	Build Rate (°/100ft)	Comments / Formations
9,600.0	0.30	239.49	9,228.9	2,421.3	-258.4	2,435.0	0.00	0.00	
9,700.0	0.30	239.49	9,328.9	2,421.0	-258.8	2,434.8	0.00	0.00	
9,800.0	0.30	239.49	9,428.9	2,420.8	-259.3	2,434.6	0.00	0.00	
9,900.0	0.30	239.49	9,528.9	2,420.5	-259.7	2,434.4	0.00	0.00	
10,000.0	0.30	239.49	9,628.9	2,420.3	-260.2	2,434.2	0.00	0.00	
10,100.0	0.30	239.49	9,728.9	2,420.0	-260.6	2,434.0	0.00	0.00	
10,200.0	0.30	239.49	9,828.9	2,419.7	-261.1	2,433.7	0.00	0.00	
10,300.0	0.30	239.49	9,928.9	2,419.5	-261.5	2,433.5	0.00	0.00	
10,400.0	0.30	239.49	10,028.9	2,419.2	-261.9	2,433.3	0.00	0.00	
10,500.0	0.30	239.49	10,128.9	2,418.9	-262.4	2,433.1	0.00	0.00	
10,600.0	0.30	239.49	10,228.9	2,418.7	-262.8	2,432.9	0.00	0.00	
10,700.0	0.30	239.49	10,328.9	2,418.4	-263.3	2,432.7	0.00	0.00	
10,800.0	0.30	239.49	10,428.9	2,418.2	-263.7	2,432.5	0.00	0.00	
10,900.0	0.30	239.49	10,528.9	2,417.9	-264.2	2,432.3	0.00	0.00	
11,000.0	0.30	239.49	10,628.9	2,417.6	-264.6	2,432.1	0.00	0.00	
11,100.0	0.30	239.49	10,728.9	2,417.4	-265.1	2,431.9	0.00	0.00	
11,200.0	0.30	239.49	10,828.9	2,417.1	-265.5	2,431.6	0.00	0.00	
11,300.0	0.30	239.49	10,928.9	2,416.9	-265.9	2,431.4	0.00	0.00	
11,400.0	0.30	239.49	11,028.9	2,416.6	-266.4	2,431.2	0.00	0.00	
11,500.0	0.30	239.49	11,128.9	2,416.3	-266.8	2,431.0	0.00	0.00	
11,600.0	0.30	239.49	11,228.9	2,416.1	-267.3	2,430.8	0.00	0.00	
11,700.0	0.30	239.49	11,328.9	2,415.8	-267.7	2,430.6	0.00	0.00	
11,800.0	0.30	239.49	11,428.9	2,415.5	-268.2	2,430.4	0.00	0.00	
11,900.0	0.30	239.49	11,528.9	2,415.3	-268.6	2,430.2	0.00	0.00	
12,000.0	0.30	239.49	11,628.9	2,415.0	-269.1	2,430.0	0.00	0.00	
12,100.0	0.30	239.49	11,728.9	2,414.8	-269.5	2,429.7	0.00	0.00	
12,200.0	0.30	239.49	11,828.9	2,414.5	-269.9	2,429.5	0.00	0.00	
12,300.0	0.30	239.49	11,928.9	2,414.2	-270.4	2,429.3	0.00	0.00	
12,400.0	0.30	239.49	12,028.9	2,414.0	-270.8	2,429.1	0.00	0.00	
12,500.0	0.30	239.49	12,128.9	2,413.7	-271.3	2,428.9	0.00	0.00	
12,600.0	0.30	239.49	12,228.9	2,413.4	-271.7	2,428.7	0.00	0.00	
12,672.1	0.30	239.49	12,301.0	2,413.3	-272.0	2,428.5	0.00	0.00	ROLLINS - 8504G-24 L24 496 BHL
12,700.0	0.30	239.49	12,328.9	2,413.2	-272.2	2,428.5	0.00	0.00	
12,772.1	0.30	239.49	12,401.0	2,413.0	-272.5	2,428.3	0.00	0.00	Drillers TD @ 12772.1' MD
12,800.0	0.30	239.49	12,428.9	2,412.9	-272.6	2,428.3	0.00	0.00	
12,816.1	0.30	239.49	12,445.0	2,412.9	-272.7	2,428.2	0.00	0.00	COZZETTE
12,900.0	0.30	239.49	12,528.9	2,412.7	-273.0	2,428.1	0.00	0.00	
13,000.0	0.30	239.49	12,628.9	2,412.4	-273.5	2,427.9	0.00	0.00	
13,071.1	0.30	239.49	12,700.0	2,412.2	-273.8	2,427.7	0.00	0.00	LOWER_SEGO
13,100.0	0.30	239.49	12,728.9	2,412.1	-273.9	2,427.6	0.00	0.00	
13,119.1	0.30	239.49	12,748.0	2,412.1	-274.0	2,427.6	0.00	0.00	CORCORAN
13,200.0	0.30	239.49	12,828.9	2,411.9	-274.4	2,427.4	0.00	0.00	
13,300.0	0.30	239.49	12,928.9	2,411.6	-274.8	2,427.2	0.00	0.00	
13,331.1	0.30	239.49	12,960.0	2,411.5	-275.0	2,427.2	0.00	0.00	SEGO
13,400.0	0.30	239.49	13,028.9	2,411.4	-275.3	2,427.0	0.00	0.00	
13,500.0	0.30	239.49	13,128.9	2,411.1	-275.7	2,426.8	0.00	0.00	
13,600.0	0.30	239.49	13,228.9	2,410.8	-276.2	2,426.6	0.00	0.00	
13,700.0	0.30	239.49	13,328.9	2,410.6	-276.6	2,426.4	0.00	0.00	
13,772.1	0.30	239.49	13,401.0	2,410.4	-276.9	2,426.2	0.00	0.00	Permit TD @ 13772.1' MD

# Cathedral Energy Services

## Planning Report

<b>Database:</b>	EDM 5000.1 US Multi Users DB	<b>Local Co-ordinate Reference:</b>	Well 8504G-24 L24 496
<b>Company:</b>	EnCana Oil & Gas (USA) Inc	<b>TVD Reference:</b>	KBE @ 8208.0ft (Original Well Elev)
<b>Project:</b>	Story Gulch	<b>MD Reference:</b>	KBE @ 8208.0ft (Original Well Elev)
<b>Site:</b>	L24 496	<b>North Reference:</b>	True
<b>Well:</b>	8504G-24 L24 496	<b>Survey Calculation Method:</b>	Minimum Curvature
<b>Wellbore:</b>	DD		
<b>Design:</b>	Plan #1		

Targets									
Target Name									
- hit/miss target	Dip Angle	Dip Dir.	TVD	+N/-S	+E/-W	Northing	Easting	Latitude	Longitude
- Shape	(°)	(°)	(ft)	(ft)	(ft)	(ft)	(ft)		
8504G-24 L24 496 TOG	0.00	0.00	8,406.0	2,423.3	-255.0	1,687,538.43	2,261,665.31	39° 41' 30.52 N	108° 7' 26.50 W
- plan hits target center									
- Point									
8504G-24 L24 496 BHL	0.00	0.00	12,301.0	2,413.3	-272.0	1,687,528.89	2,261,647.99	39° 41' 30.42 N	108° 7' 26.72 W
- plan hits target center									
- Rectangle (sides W30.0 H50.0 D0.0)									

Formations						
Measured Depth	Vertical Depth	Name	Lithology	Dip	Dip Direction	
(ft)	(ft)			(°)	(°)	
1,332.2	1,297.0	A_GROOVE				
2,632.1	2,535.0	GARDEN_GULCH / L-1				
6,245.2	5,976.0	WASATCH_G				
8,737.1	8,366.0	WILLIAMS_FORK				
8,777.1	8,406.0	TOG				
12,672.1	12,301.0	ROLLINS				
12,816.1	12,445.0	COZZETTE				
13,071.1	12,700.0	LOWER_SEGO				
13,119.1	12,748.0	CORCORAN				
13,331.1	12,960.0	SEGO				

Plan Annotations				
Measured Depth	Vertical Depth	Local Coordinates		Comment
(ft)	(ft)	+N/-S (ft)	+E/-W (ft)	
200.0	200.0	0.0	0.0	KOP @ 200' MD
791.9	782.4	90.5	-9.5	EOB; Inc=17.76°
8,185.2	7,823.6	2,332.8	-245.5	Start Drop -3.00
8,777.1	8,406.0	2,423.3	-255.0	EOD; Inc=0°
12,772.1	12,401.0	2,413.0	-272.5	Drillers TD @ 12772.1' MD
13,772.1	13,401.0	2,410.4	-276.9	Permit TD @ 13772.1' MD