

Downhole Schematic for N Parachute WF15A-22 K22 596



Project : North Piceance

API # : 05045188700000

Surface Location : NESW Sec 22 T5S - R96W 6th PM

Area : N Parachute

County :

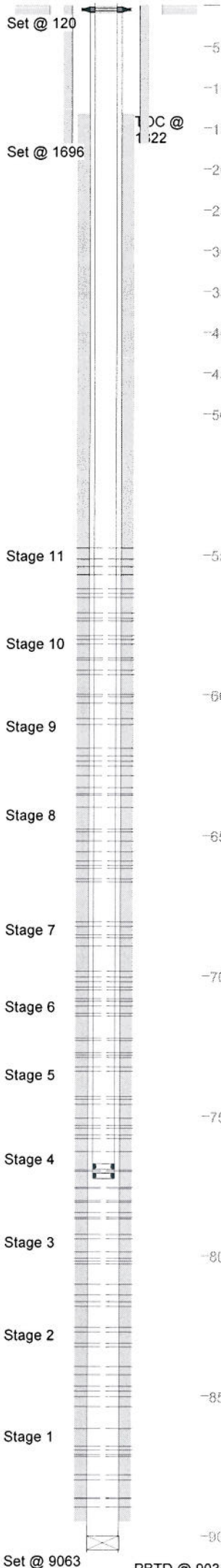
BHL : SWSE-22-5S-96 W 6th PM

As Of : 08/10/2011

GL : 6528.0 ft

KB to GL : ft

KB : 0.0 ft



Casing Details									
Section	Hole	Casing	Mass	Set At	Length	Thread	Grade	Description	
Conductor	26.000	16	0	120	120		A52A	Line Pipe	
Surface	12.250	9.625	0	1,696	2	LT&C	J55	Float Shoe	
		9.625	36	1,695	41	LT&C	J55	Shoe Track	
		9.625	36	1,653	44	LT&C	J55	Shark Bite	
		9.625	36	1,609	1,609	LT&C	J55	Joints Of Casing	
		9.625	36	0	0	ST&C	J55	Wellhead Assm	
		9.625	36	0	0	LT&C	J55	Landing Joint	
Production	8.100	4.5	0	9,063	2	Butt	L80	Float Shoe	
		4.5	11.6	9,062	26	Butt	E80	Marker Jnt	
		4.5	11.6	9,036	2	Butt	L80	Float Collar	
		4.5	11.6	9,035	1,459	Butt	E80	Casing	
		4.5	11.6	7,575	23	Butt	S80	Marker Jnt	
		4.5	11.6	7,553	2,197	Butt	E80	Casing	
		4.5	11.6	5,355	23	Butt	S80	Marker Jnt	
		4.5	11.6	5,333	5,336	Butt	E80	Casing	

Cement Details									
Section	Sequence	Top	Density	Blend / Additives					
Production	Scavenger	0	12.0	MUDPUSH II / 30 bbl 100# D182+6600#D031					
Lead	Lead	1,322	12.5	12.5ppg Poz "G" / 5.0% D044+0.2% D046+ 2.0% D079 + 1.3% D013					
Tail	Tail	4,316	13.0	+ 0.4% D182 + 0.25 PPS D029					
Conductor	Fill	0	13.0	13.0 PPG Poz "A" - Rockies Correct / 5.0% D044 + 35% D178+					
Tail	Tail	30	13.5	3.0% D020 + 0.4% D182 + 0.75% D112 +0.35% D201% +0.2%					
Surface	Lead	0	12.5	D065+ 0.2% D046 + 0.25 PPS D029					
Tail	Tail	1,270	14.0	Control Set C / 1/4lb/sk Polliflake					
				Control Set C / 1/4lb/sk Polliflake					
				"G" / G+2.0%D079+0.2%D46+0.25 pps D29					
				"G" / G+1%D79+0.2%D46+0.25pps D29					

Tubing and Downhole Equipment

O.D.	Length	Depth	Description
0.000	22.00	0.00	22ft KB
7.063	0.93	22.00	7-1/16" Wood Group Tbg hanger
3.063	7,648.45	7,670.45	247jts 2-3/8" 4.7# L80 EUE Tbg
3.063	1.10	7,671.55	2-3/8" N80 Flag Nipple (1.995" I.D)
3.063	31.47	7,703.02	1jtt (248jts total) 2-3/8" 4.7# L80 EUE Tbg
3.063	1.10	7,704.12	2-3/8" Seating Nipple (1.78" I.D)
3.063	10.10	7,714.22	2-3/8" 10ft Pup Jt = EOT

Perforations									
Stage	Date	From	To	Shots					
Stage 1	07/21/2011	8,899	8,900	3	7,804	7,805	7,760	7,761	3
		8,868	8,869	3	7,756	7,757	7,698	7,699	3
		8,866	8,867	3	7,698	7,699	7,693	7,694	3
		8,801	8,802	3	7,693	7,694	7,626	7,627	3
		8,783	8,784	3	7,626	7,627			
		8,717	8,718	3					
		8,710	8,711	3					
		8,694	8,695	3					
		8,680	8,681	3					
		8,617	8,618	3					
Stage 5	07/27/2011	7,580	7,581	3	7,507	7,508	7,568	7,569	3
		7,568	7,569	3	7,568	7,569	7,543	7,544	3
		7,543	7,544	3	7,543	7,544	7,533	7,534	3
		7,507	7,508	3	7,533	7,534	7,507	7,508	3
		6,030	6,031	3	7,458	7,459	7,440	7,441	3
		6,007	6,008	3	7,440	7,441	7,430	7,431	3
		5,998	5,999	3	7,430	7,431	7,339	7,340	3
		5,928	5,929	3	7,339	7,340	7,324	7,325	3
		5,913	5,914	3	7,324	7,325			
		5,877	5,878	3					
		5,868	5,869	3					
		5,820	5,821	3					
		5,803	5,804	3					
		5,790	5,791	3					
Stage 6	07/28/2011	7,290	7,291	3	7,222	7,223	7,290	7,291	3
		7,281	7,282	3	7,222	7,223	7,281	7,282	3
		7,273	7,274	3	7,222	7,223	7,273	7,274	3
		7,230	7,231	3	7,222	7,223	7,230	7,231	3
		7,222	7,223	3	7,222	7,223	7,143	7,144	3
		7,143	7,144	3	7,143	7,144	7,134	7,135	3
		5,737	5,738	3	7,134	7,135	7,108	7,109	3
		5,727	5,728	3	7,108	7,109	7,091	7,092	3
		5,708	5,709	3	7,091	7,092	7,082	7,083	3
		5,654	5,655	3	7,082	7,083			
		5,640	5,641	3					
		5,622	5,623	3					
		5,572	5,573	3					
		5,543	5,544	3					
		5,516	5,517	3					
		5,476	5,477	3					
Stage 7	08/03/2011	8,539	8,540	3	6,666	6,667	6,895	6,896	3
		8,503	8,504	3	6,666	6,667	6,895	6,896	3
		8,483	8,484	3	6,666	6,667	6,866	6,867	3
		8,465	8,466	3	6,666	6,667	6,855	6,856	3
		8,425	8,426	3	6,666	6,667	6,825	6,826	3
		8,395	8,396	3	6,666	6,667	6,809	6,810	3
		8,325	8,326	3					
		8,312	8,313	3					
		8,272	8,273	3					
		8,255	8,256	3					
Stage 8	08/01/2011	6,666	6,667	3	6,051	6,052	6,666	6,667	3
		6,655	6,656	3	6,051	6,052	6,655	6,656	3
		6,617	6,618	3	6,041	6,042	6,617	6,618	3
		6,608	6,609	3	6,022	6,023	6,608	6,609	3
		6,592	6,593	3	6,005	6,006	6,592	6,593	3
		6,559	6,560	3	6,985	6,986	6,559	6,560	3
		6,520	6,521	3	6,985	6,986	6,520	6,521	3
		6,487	6,488	3	6,985	6,986	6,487	6,488	3
		6,478	6,479	3	6,985	6,986	6,478	6,479	3
		6,400	6,401	3	6,985	6,986	6,400	6,401	3
Stage 9	08/01/2011	6,357	6,358	3	7,051	7,052	6,357	6,358	3
		6,352	6,353	3	7,051	7,052	6,352	6,353	3
		6,330	6,331	3	7,041	7,042	6,330	6,331	3
		6,287	6,288	3	7,022	7,023	6,287	6,288	3
		6,253	6,254	3	7,005	7,006	6,253	6,254	3
		6,236	6,237	3	6,985	6,986	6,236	6,237	3
		6,217	6,218	3	6,985	6,986	6,217	6,218	3
		6,190	6,191	3	6,985	6,986	6,190	6,191	3
		6,106	6,107	3	6,985	6,986	6,106	6,107	3
		6,085	6,086	3	6,985	6,986	6,085	6,086	3

Frac Summary									
Stage	From	To	Shots	Volume	Report Date				
Stage 1	8,617	8,900	30	4766 bbls	07/25/2011				
Stage 2	8,255	8,540	30	9037 bbls	07/26/2011				
Stage 3	7,924	8,181	30	7552 bbls	07/26/2011				
Stage 4	7,626	7,869	30	10244 bbls	07/27/2011				
Stage 5	7,324	7,581	30	14331 bbls	07/28/2011				
Stage 6	7,082	7,291	30	11173 bbls	07/28/2011				
Stage 7	6,809	7,052	30	13123 bbls	08/01/2011				
Stage 8	6,400	6,667	30	11638 bbls	08/01/2011				
Stage 9	6,085	6,358	30	11544 bbls	08/02/2011				
Stage 10	5,790	6,031	30	12380 bbls	08/03/2011				
Stage 11	5,476	5,738	30	18694 bbls	08/03/2011				

Bridge Plug Details			
Depth	Date Set	Plug Type	Sacks Cement
9,001.0	07/14/2011	CIBP	0

Comments
See Attached Tbg tally