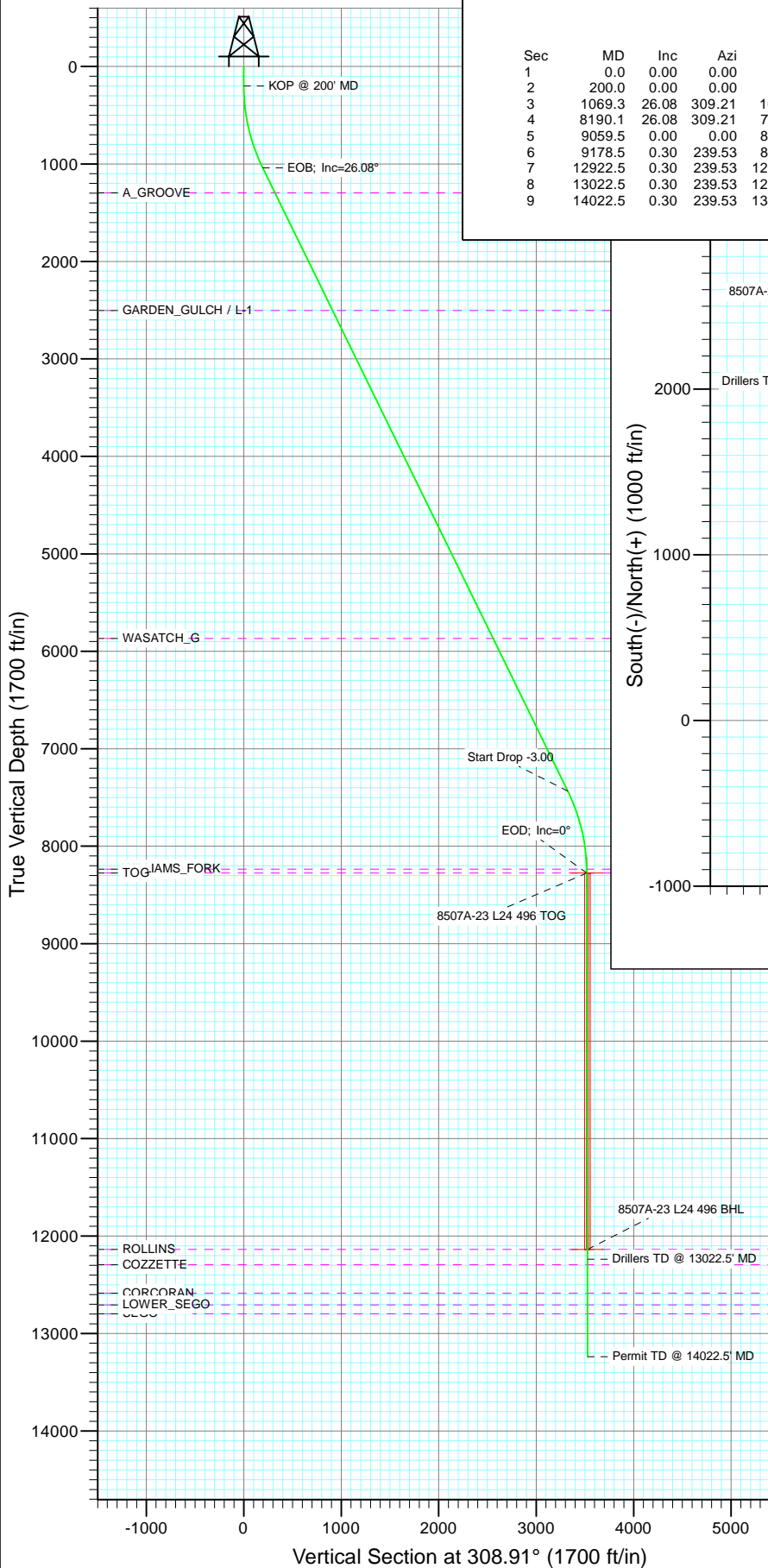
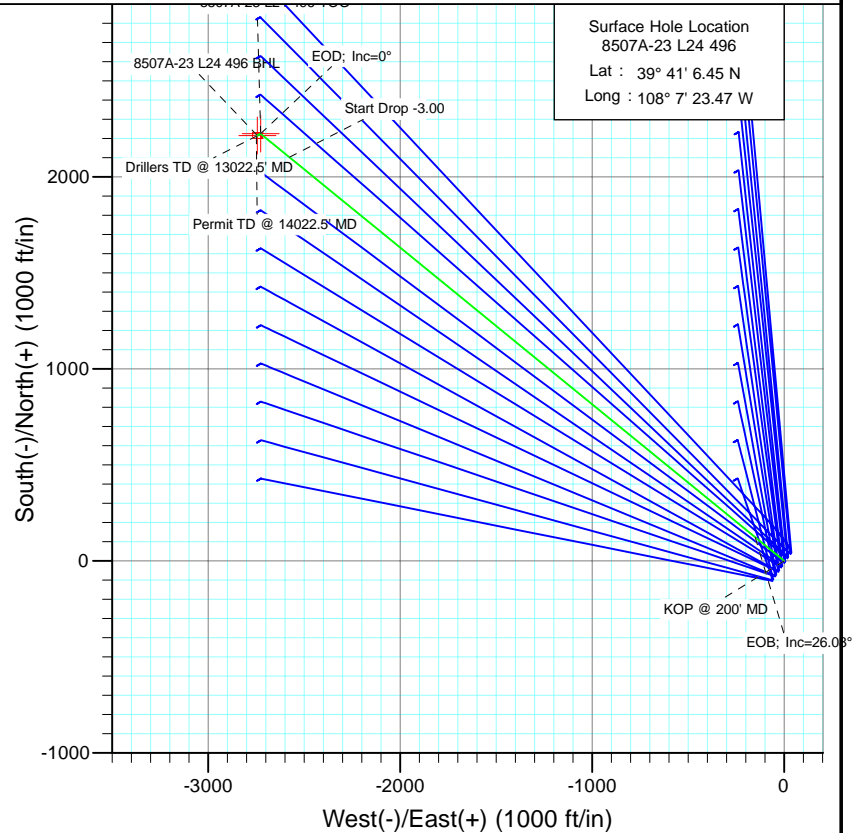




Project: Story Gulch
Site: L24 496
Well: 8507A-23 L24 496
Wellbore: DD
Design: Plan #1



SECTION DETAILS										
Sec	MD	Inc	Azi	TVD	+N/-S	+E/-W	Dleg	TFace	Vsect	Target
1	0.0	0.00	0.00	0.0	0.0	0.0	0.00	0.00	0.0	
2	200.0	0.00	0.00	200.0	0.0	0.0	0.00	0.00	0.0	
3	1069.3	26.08	309.21	1039.6	122.9	-150.7	3.00	309.21	194.5	
4	8190.1	26.08	309.21	7435.4	2102.2	-2576.1	0.00	0.00	3324.9	
5	9059.5	0.00	0.00	8275.0	2225.1	-2726.8	3.00	180.00	3519.4	8507A-23 L24 496 TOG
6	9178.5	0.30	239.53	8394.0	2224.9	-2727.1	0.25	239.53	3519.5	
7	12922.5	0.30	239.53	12138.0	2215.1	-2743.8	0.00	0.00	3526.4	8507A-23 L24 496 BHL
8	13022.5	0.30	239.53	12238.0	2214.8	-2744.3	0.00	0.00	3526.5	
9	14022.5	0.30	239.53	13238.0	2212.2	-2748.8	0.00	0.00	3528.4	



Azimuths to True North
Magnetic North: 10.44°

Magnetic Field
Strength: 52326.5nT
Dip Angle: 65.87°
Date: 5/17/2011
Model: IGRF2010

FORMATION TOP DETAILS

TVDPath	MDPath	Formation
1297.0	1355.9	A_GROOVE
2503.0	2698.6	GARDEN_GULCH / L-1
5868.0	6445.1	WASATCH_G
8235.0	9019.5	WILLIAMS_FORK
8275.0	9059.5	TOG
12138.0	12922.5	ROLLINS
12294.0	13078.5	COZZETTE
12586.0	13370.5	CORCORAN
12706.0	13490.5	LOWER_SEGO
12797.0	13581.5	SEGO

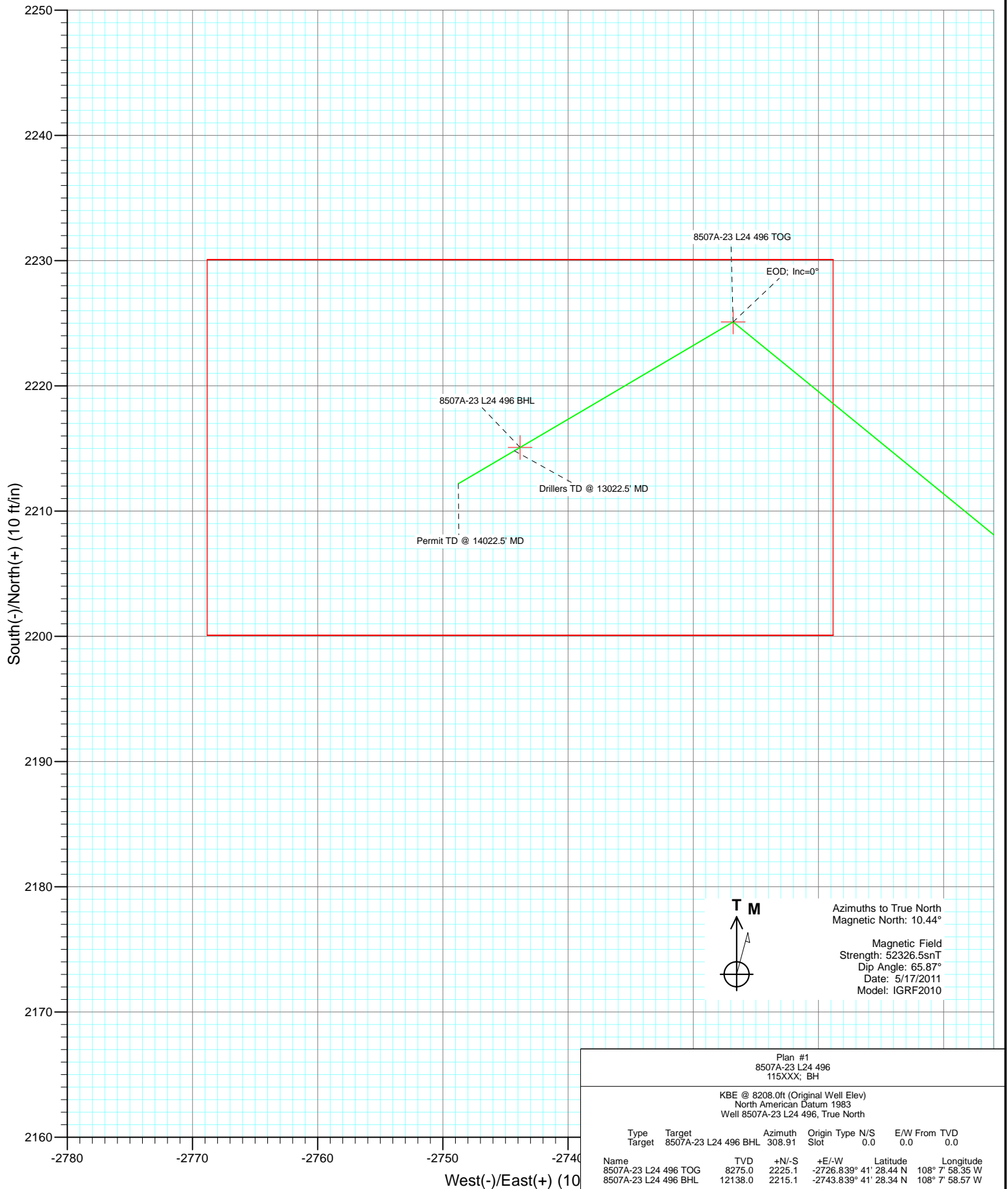
Plan #1
8507A-23 L24 496
115XXX; BH

KBE @ 8208.0ft (Original Well Elev)
North American Datum 1983
Well 8507A-23 L24 496, True North

Type	Target	Azimuth	Origin	Type	N/S	E/W	From	TVD
Target	8507A-23 L24 496 BHL	308.91	Slot	0.0	0.0	0.0		0.0
Name	8507A-23 L24 496 TOG	TVD	+N/-S	+E/-W	Latitude	Longitude		
		8275.0	2225.1	-2726.839° 41'	28.44 N	108° 7' 58.35 W		
	8507A-23 L24 496 BHL	12138.0	2215.1	-2743.839° 41'	28.34 N	108° 7' 58.57 W		



Project: Story Gulch
 Site: L24 496
 Well: 8507A-23 L24 496
 Wellbore: DD
 Design: Plan #1



Cathedral Energy Services

Planning Report

Database:	EDM 5000.1 US Multi Users DB	Local Co-ordinate Reference:	Well 8507A-23 L24 496
Company:	EnCana Oil & Gas (USA) Inc	TVD Reference:	KBE @ 8208.0ft (Original Well Elev)
Project:	Story Gulch	MD Reference:	KBE @ 8208.0ft (Original Well Elev)
Site:	L24 496	North Reference:	True
Well:	8507A-23 L24 496	Survey Calculation Method:	Minimum Curvature
Wellbore:	DD		
Design:	Plan #1		

Project	Story Gulch		
Map System:	US State Plane 1983	System Datum:	Mean Sea Level
Geo Datum:	North American Datum 1983		
Map Zone:	Colorado Central Zone		

Site	L24 496			
Site Position:		Northing:	1,685,024.52 ft	Latitude: 39° 41' 5.72 N
From:	Lat/Long	Easting:	2,261,789.15 ft	Longitude: 108° 7' 23.99 W
Position Uncertainty:	0.0 ft	Slot Radius:	13.200 in	Grid Convergence: -1.65 °

Well	8507A-23 L24 496			
Well Position	+N/-S	0.0 ft	Northing:	1,685,097.17 ft
	+E/-W	0.0 ft	Easting:	2,261,831.92 ft
Position Uncertainty		0.0 ft	Wellhead Elevation:	ft
			Ground Level:	8,193.0 ft

Wellbore	DD				
Magnetics	Model Name	Sample Date	Declination (°)	Dip Angle (°)	Field Strength (nT)
	IGRF2010	5/17/2011	10.44	65.87	52,327

Design	Plan #1			
Audit Notes:				
Version:	Phase:	PLAN	Tie On Depth:	0.0
Vertical Section:	Depth From (TVD) (ft)	+N/-S (ft)	+E/-W (ft)	Direction (°)
	0.0	0.0	0.0	308.91

Plan Sections										
Measured Depth (ft)	Inclination (°)	Azimuth (°)	Vertical Depth (ft)	+N/-S (ft)	+E/-W (ft)	Dogleg Rate (°/100ft)	Build Rate (°/100ft)	Turn Rate (°/100ft)	TFO (°)	Target
0.0	0.00	0.00	0.0	0.0	0.0	0.00	0.00	0.00	0.00	
200.0	0.00	0.00	200.0	0.0	0.0	0.00	0.00	0.00	0.00	
1,069.3	26.08	309.21	1,039.6	122.9	-150.7	3.00	3.00	0.00	309.21	
8,190.1	26.08	309.21	7,435.4	2,102.2	-2,576.1	0.00	0.00	0.00	0.00	
9,059.5	0.00	0.00	8,275.0	2,225.1	-2,726.8	3.00	-3.00	0.00	180.00	8507A-23 L24 496 TC
9,178.5	0.30	239.53	8,394.0	2,224.9	-2,727.1	0.25	0.25	-101.19	239.53	
12,922.5	0.30	239.53	12,138.0	2,215.1	-2,743.8	0.00	0.00	0.00	0.00	8507A-23 L24 496 B+
13,022.5	0.30	239.53	12,238.0	2,214.8	-2,744.3	0.00	0.00	0.00	0.00	
14,022.5	0.30	239.53	13,238.0	2,212.2	-2,748.8	0.00	0.00	0.00	0.00	

Cathedral Energy Services

Planning Report

Database:	EDM 5000.1 US Multi Users DB	Local Co-ordinate Reference:	Well 8507A-23 L24 496
Company:	EnCana Oil & Gas (USA) Inc	TVD Reference:	KBE @ 8208.0ft (Original Well Elev)
Project:	Story Gulch	MD Reference:	KBE @ 8208.0ft (Original Well Elev)
Site:	L24 496	North Reference:	True
Well:	8507A-23 L24 496	Survey Calculation Method:	Minimum Curvature
Wellbore:	DD		
Design:	Plan #1		

Planned Survey

Measured Depth (ft)	Inclination (°)	Azimuth (°)	Vertical Depth (ft)	+N/-S (ft)	+E/-W (ft)	Vertical Section (ft)	Dogleg Rate (°/100ft)	Build Rate (°/100ft)	Comments / Formations
0.0	0.00	0.00	0.0	0.0	0.0	0.0	0.00	0.00	
100.0	0.00	0.00	100.0	0.0	0.0	0.0	0.00	0.00	
200.0	0.00	0.00	200.0	0.0	0.0	0.0	0.00	0.00	KOP @ 200' MD
300.0	3.00	309.21	300.0	1.7	-2.0	2.6	3.00	3.00	
400.0	6.00	309.21	399.6	6.6	-8.1	10.5	3.00	3.00	
500.0	9.00	309.21	498.8	14.9	-18.2	23.5	3.00	3.00	
600.0	12.00	309.21	597.1	26.4	-32.3	41.7	3.00	3.00	
700.0	15.00	309.21	694.3	41.1	-50.4	65.1	3.00	3.00	
800.0	18.00	309.21	790.2	59.1	-72.4	93.5	3.00	3.00	
900.0	21.00	309.21	884.4	80.2	-98.3	126.9	3.00	3.00	
1,000.0	24.00	309.21	976.8	104.4	-127.9	165.1	3.00	3.00	
1,069.3	26.08	309.21	1,039.6	122.9	-150.7	194.5	3.00	3.00	EOB; Inc=26.08°
1,100.0	26.08	309.21	1,067.2	131.5	-161.1	207.9	0.00	0.00	
1,200.0	26.08	309.21	1,157.0	159.3	-195.2	251.9	0.00	0.00	
1,300.0	26.08	309.21	1,246.8	187.1	-229.2	295.9	0.00	0.00	
1,355.9	26.08	309.21	1,297.0	202.6	-248.3	320.4	0.00	0.00	A_GROOVE
1,400.0	26.08	309.21	1,336.6	214.9	-263.3	339.8	0.00	0.00	
1,500.0	26.08	309.21	1,426.4	242.6	-297.4	383.8	0.00	0.00	
1,600.0	26.08	309.21	1,516.3	270.4	-331.4	427.8	0.00	0.00	
1,700.0	26.08	309.21	1,606.1	298.2	-365.5	471.7	0.00	0.00	
1,800.0	26.08	309.21	1,695.9	326.0	-399.5	515.7	0.00	0.00	
1,900.0	26.08	309.21	1,785.7	353.8	-433.6	559.6	0.00	0.00	
2,000.0	26.08	309.21	1,875.5	381.6	-467.7	603.6	0.00	0.00	
2,100.0	26.08	309.21	1,965.3	409.4	-501.7	647.6	0.00	0.00	
2,200.0	26.08	309.21	2,055.2	437.2	-535.8	691.5	0.00	0.00	
2,300.0	26.08	309.21	2,145.0	465.0	-569.9	735.5	0.00	0.00	
2,400.0	26.08	309.21	2,234.8	492.8	-603.9	779.5	0.00	0.00	
2,500.0	26.08	309.21	2,324.6	520.6	-638.0	823.4	0.00	0.00	
2,600.0	26.08	309.21	2,414.4	548.4	-672.0	867.4	0.00	0.00	
2,698.6	26.08	309.21	2,503.0	575.8	-705.6	910.7	0.00	0.00	GARDEN_GULCH / L-1
2,700.0	26.08	309.21	2,504.3	576.2	-706.1	911.3	0.00	0.00	
2,800.0	26.08	309.21	2,594.1	604.0	-740.2	955.3	0.00	0.00	
2,900.0	26.08	309.21	2,683.9	631.8	-774.2	999.3	0.00	0.00	
3,000.0	26.08	309.21	2,773.7	659.6	-808.3	1,043.2	0.00	0.00	
3,100.0	26.08	309.21	2,863.5	687.4	-842.3	1,087.2	0.00	0.00	
3,200.0	26.08	309.21	2,953.3	715.2	-876.4	1,131.2	0.00	0.00	
3,300.0	26.08	309.21	3,043.2	743.0	-910.5	1,175.1	0.00	0.00	
3,400.0	26.08	309.21	3,133.0	770.7	-944.5	1,219.1	0.00	0.00	
3,500.0	26.08	309.21	3,222.8	798.5	-978.6	1,263.0	0.00	0.00	
3,600.0	26.08	309.21	3,312.6	826.3	-1,012.7	1,307.0	0.00	0.00	
3,700.0	26.08	309.21	3,402.4	854.1	-1,046.7	1,351.0	0.00	0.00	
3,800.0	26.08	309.21	3,492.2	881.9	-1,080.8	1,394.9	0.00	0.00	
3,900.0	26.08	309.21	3,582.1	909.7	-1,114.8	1,438.9	0.00	0.00	
4,000.0	26.08	309.21	3,671.9	937.5	-1,148.9	1,482.9	0.00	0.00	
4,100.0	26.08	309.21	3,761.7	965.3	-1,183.0	1,526.8	0.00	0.00	
4,200.0	26.08	309.21	3,851.5	993.1	-1,217.0	1,570.8	0.00	0.00	
4,300.0	26.08	309.21	3,941.3	1,020.9	-1,251.1	1,614.7	0.00	0.00	
4,400.0	26.08	309.21	4,031.2	1,048.7	-1,285.1	1,658.7	0.00	0.00	
4,500.0	26.08	309.21	4,121.0	1,076.5	-1,319.2	1,702.7	0.00	0.00	
4,600.0	26.08	309.21	4,210.8	1,104.3	-1,353.3	1,746.6	0.00	0.00	
4,700.0	26.08	309.21	4,300.6	1,132.1	-1,387.3	1,790.6	0.00	0.00	
4,800.0	26.08	309.21	4,390.4	1,159.9	-1,421.4	1,834.6	0.00	0.00	

Cathedral Energy Services

Planning Report

Database:	EDM 5000.1 US Multi Users DB	Local Co-ordinate Reference:	Well 8507A-23 L24 496
Company:	EnCana Oil & Gas (USA) Inc	TVD Reference:	KBE @ 8208.0ft (Original Well Elev)
Project:	Story Gulch	MD Reference:	KBE @ 8208.0ft (Original Well Elev)
Site:	L24 496	North Reference:	True
Well:	8507A-23 L24 496	Survey Calculation Method:	Minimum Curvature
Wellbore:	DD		
Design:	Plan #1		

Planned Survey									
Measured Depth (ft)	Inclination (°)	Azimuth (°)	Vertical Depth (ft)	+N/-S (ft)	+E/-W (ft)	Vertical Section (ft)	Dogleg Rate (°/100ft)	Build Rate (°/100ft)	Comments / Formations
4,900.0	26.08	309.21	4,480.2	1,187.7	-1,455.5	1,878.5	0.00	0.00	
5,000.0	26.08	309.21	4,570.1	1,215.5	-1,489.5	1,922.5	0.00	0.00	
5,100.0	26.08	309.21	4,659.9	1,243.3	-1,523.6	1,966.4	0.00	0.00	
5,200.0	26.08	309.21	4,749.7	1,271.1	-1,557.6	2,010.4	0.00	0.00	
5,300.0	26.08	309.21	4,839.5	1,298.8	-1,591.7	2,054.4	0.00	0.00	
5,400.0	26.08	309.21	4,929.3	1,326.6	-1,625.8	2,098.3	0.00	0.00	
5,500.0	26.08	309.21	5,019.2	1,354.4	-1,659.8	2,142.3	0.00	0.00	
5,600.0	26.08	309.21	5,109.0	1,382.2	-1,693.9	2,186.3	0.00	0.00	
5,700.0	26.08	309.21	5,198.8	1,410.0	-1,728.0	2,230.2	0.00	0.00	
5,800.0	26.08	309.21	5,288.6	1,437.8	-1,762.0	2,274.2	0.00	0.00	
5,900.0	26.08	309.21	5,378.4	1,465.6	-1,796.1	2,318.1	0.00	0.00	
6,000.0	26.08	309.21	5,468.2	1,493.4	-1,830.1	2,362.1	0.00	0.00	
6,100.0	26.08	309.21	5,558.1	1,521.2	-1,864.2	2,406.1	0.00	0.00	
6,200.0	26.08	309.21	5,647.9	1,549.0	-1,898.3	2,450.0	0.00	0.00	
6,300.0	26.08	309.21	5,737.7	1,576.8	-1,932.3	2,494.0	0.00	0.00	
6,400.0	26.08	309.21	5,827.5	1,604.6	-1,966.4	2,538.0	0.00	0.00	
6,445.1	26.08	309.21	5,868.0	1,617.1	-1,981.7	2,557.8	0.00	0.00	WASATCH_G
6,500.0	26.08	309.21	5,917.3	1,632.4	-2,000.4	2,581.9	0.00	0.00	
6,600.0	26.08	309.21	6,007.1	1,660.2	-2,034.5	2,625.9	0.00	0.00	
6,700.0	26.08	309.21	6,097.0	1,688.0	-2,068.6	2,669.8	0.00	0.00	
6,800.0	26.08	309.21	6,186.8	1,715.8	-2,102.6	2,713.8	0.00	0.00	
6,900.0	26.08	309.21	6,276.6	1,743.6	-2,136.7	2,757.8	0.00	0.00	
7,000.0	26.08	309.21	6,366.4	1,771.4	-2,170.8	2,801.7	0.00	0.00	
7,100.0	26.08	309.21	6,456.2	1,799.2	-2,204.8	2,845.7	0.00	0.00	
7,200.0	26.08	309.21	6,546.1	1,826.9	-2,238.9	2,889.7	0.00	0.00	
7,300.0	26.08	309.21	6,635.9	1,854.7	-2,272.9	2,933.6	0.00	0.00	
7,400.0	26.08	309.21	6,725.7	1,882.5	-2,307.0	2,977.6	0.00	0.00	
7,500.0	26.08	309.21	6,815.5	1,910.3	-2,341.1	3,021.5	0.00	0.00	
7,600.0	26.08	309.21	6,905.3	1,938.1	-2,375.1	3,065.5	0.00	0.00	
7,700.0	26.08	309.21	6,995.1	1,965.9	-2,409.2	3,109.5	0.00	0.00	
7,800.0	26.08	309.21	7,085.0	1,993.7	-2,443.2	3,153.4	0.00	0.00	
7,900.0	26.08	309.21	7,174.8	2,021.5	-2,477.3	3,197.4	0.00	0.00	
8,000.0	26.08	309.21	7,264.6	2,049.3	-2,511.4	3,241.4	0.00	0.00	
8,100.0	26.08	309.21	7,354.4	2,077.1	-2,545.4	3,285.3	0.00	0.00	
8,190.1	26.08	309.21	7,435.4	2,102.2	-2,576.1	3,324.9	0.00	0.00	Start Drop -3.00
8,200.0	25.78	309.21	7,444.2	2,104.9	-2,579.5	3,329.3	3.00	-3.00	
8,300.0	22.78	309.21	7,535.4	2,130.9	-2,611.3	3,370.4	3.00	-3.00	
8,400.0	19.78	309.21	7,628.6	2,153.8	-2,639.5	3,406.7	3.00	-3.00	
8,500.0	16.78	309.21	7,723.5	2,173.7	-2,663.8	3,438.0	3.00	-3.00	
8,600.0	13.78	309.21	7,819.9	2,190.3	-2,684.2	3,464.4	3.00	-3.00	
8,700.0	10.78	309.21	7,917.6	2,203.8	-2,700.7	3,485.7	3.00	-3.00	
8,800.0	7.78	309.21	8,016.3	2,214.0	-2,713.2	3,501.8	3.00	-3.00	
8,900.0	4.78	309.21	8,115.7	2,220.9	-2,721.6	3,512.7	3.00	-3.00	
9,000.0	1.78	309.21	8,215.5	2,224.5	-2,726.1	3,518.5	3.00	-3.00	
9,019.5	1.20	309.21	8,235.0	2,224.8	-2,726.5	3,519.0	3.00	-3.00	WILLIAMS_FORK
9,059.5	0.00	0.00	8,275.0	2,225.1	-2,726.8	3,519.4	3.00	-3.00	EOD; Inc=0° - TOG - 8507A-23 L24 496 TOG
9,100.0	0.10	239.53	8,315.5	2,225.1	-2,726.8	3,519.4	0.25	0.25	
9,178.5	0.30	239.53	8,394.0	2,224.9	-2,727.1	3,519.5	0.25	0.25	
9,200.0	0.30	239.53	8,415.5	2,224.9	-2,727.2	3,519.5	0.00	0.00	
9,300.0	0.30	239.53	8,515.5	2,224.6	-2,727.6	3,519.7	0.00	0.00	
9,400.0	0.30	239.53	8,615.5	2,224.4	-2,728.1	3,519.9	0.00	0.00	
9,500.0	0.30	239.53	8,715.5	2,224.1	-2,728.5	3,520.1	0.00	0.00	

Cathedral Energy Services

Planning Report

Database:	EDM 5000.1 US Multi Users DB	Local Co-ordinate Reference:	Well 8507A-23 L24 496
Company:	EnCana Oil & Gas (USA) Inc	TVD Reference:	KBE @ 8208.0ft (Original Well Elev)
Project:	Story Gulch	MD Reference:	KBE @ 8208.0ft (Original Well Elev)
Site:	L24 496	North Reference:	True
Well:	8507A-23 L24 496	Survey Calculation Method:	Minimum Curvature
Wellbore:	DD		
Design:	Plan #1		

Planned Survey									
Measured Depth (ft)	Inclination (°)	Azimuth (°)	Vertical Depth (ft)	+N/-S (ft)	+E/-W (ft)	Vertical Section (ft)	Dogleg Rate (°/100ft)	Build Rate (°/100ft)	Comments / Formations
9,600.0	0.30	239.53	8,815.5	2,223.8	-2,729.0	3,520.3	0.00	0.00	
9,700.0	0.30	239.53	8,915.5	2,223.6	-2,729.4	3,520.5	0.00	0.00	
9,800.0	0.30	239.53	9,015.5	2,223.3	-2,729.8	3,520.6	0.00	0.00	
9,900.0	0.30	239.53	9,115.5	2,223.0	-2,730.3	3,520.8	0.00	0.00	
10,000.0	0.30	239.53	9,215.5	2,222.8	-2,730.7	3,521.0	0.00	0.00	
10,100.0	0.30	239.53	9,315.5	2,222.5	-2,731.2	3,521.2	0.00	0.00	
10,200.0	0.30	239.53	9,415.5	2,222.3	-2,731.6	3,521.4	0.00	0.00	
10,300.0	0.30	239.53	9,515.5	2,222.0	-2,732.1	3,521.6	0.00	0.00	
10,400.0	0.30	239.53	9,615.5	2,221.7	-2,732.5	3,521.7	0.00	0.00	
10,500.0	0.30	239.53	9,715.5	2,221.5	-2,733.0	3,521.9	0.00	0.00	
10,600.0	0.30	239.53	9,815.5	2,221.2	-2,733.4	3,522.1	0.00	0.00	
10,700.0	0.30	239.53	9,915.5	2,220.9	-2,733.9	3,522.3	0.00	0.00	
10,800.0	0.30	239.53	10,015.5	2,220.7	-2,734.3	3,522.5	0.00	0.00	
10,900.0	0.30	239.53	10,115.5	2,220.4	-2,734.8	3,522.7	0.00	0.00	
11,000.0	0.30	239.53	10,215.5	2,220.1	-2,735.2	3,522.8	0.00	0.00	
11,100.0	0.30	239.53	10,315.5	2,219.9	-2,735.7	3,523.0	0.00	0.00	
11,200.0	0.30	239.53	10,415.5	2,219.6	-2,736.1	3,523.2	0.00	0.00	
11,300.0	0.30	239.53	10,515.5	2,219.4	-2,736.6	3,523.4	0.00	0.00	
11,400.0	0.30	239.53	10,615.5	2,219.1	-2,737.0	3,523.6	0.00	0.00	
11,500.0	0.30	239.53	10,715.5	2,218.8	-2,737.5	3,523.8	0.00	0.00	
11,600.0	0.30	239.53	10,815.5	2,218.6	-2,737.9	3,523.9	0.00	0.00	
11,700.0	0.30	239.53	10,915.5	2,218.3	-2,738.4	3,524.1	0.00	0.00	
11,800.0	0.30	239.53	11,015.5	2,218.0	-2,738.8	3,524.3	0.00	0.00	
11,900.0	0.30	239.53	11,115.5	2,217.8	-2,739.3	3,524.5	0.00	0.00	
12,000.0	0.30	239.53	11,215.5	2,217.5	-2,739.7	3,524.7	0.00	0.00	
12,100.0	0.30	239.53	11,315.5	2,217.2	-2,740.1	3,524.9	0.00	0.00	
12,200.0	0.30	239.53	11,415.5	2,217.0	-2,740.6	3,525.0	0.00	0.00	
12,300.0	0.30	239.53	11,515.5	2,216.7	-2,741.0	3,525.2	0.00	0.00	
12,400.0	0.30	239.53	11,615.5	2,216.5	-2,741.5	3,525.4	0.00	0.00	
12,500.0	0.30	239.53	11,715.5	2,216.2	-2,741.9	3,525.6	0.00	0.00	
12,600.0	0.30	239.53	11,815.5	2,215.9	-2,742.4	3,525.8	0.00	0.00	
12,700.0	0.30	239.53	11,915.5	2,215.7	-2,742.8	3,525.9	0.00	0.00	
12,800.0	0.30	239.53	12,015.5	2,215.4	-2,743.3	3,526.1	0.00	0.00	
12,900.0	0.30	239.53	12,115.5	2,215.1	-2,743.7	3,526.3	0.00	0.00	
12,922.5	0.30	239.53	12,138.0	2,215.1	-2,743.8	3,526.4	0.00	0.00	ROLLINS - 8507A-23 L24 496 BHL
13,000.0	0.30	239.53	12,215.5	2,214.9	-2,744.2	3,526.5	0.00	0.00	
13,022.5	0.30	239.53	12,238.0	2,214.8	-2,744.3	3,526.5	0.00	0.00	Drillers TD @ 13022.5' MD
13,078.5	0.30	239.53	12,294.0	2,214.7	-2,744.5	3,526.6	0.00	0.00	COZZETTE
13,100.0	0.30	239.53	12,315.5	2,214.6	-2,744.6	3,526.7	0.00	0.00	
13,200.0	0.30	239.53	12,415.5	2,214.4	-2,745.1	3,526.9	0.00	0.00	
13,300.0	0.30	239.53	12,515.5	2,214.1	-2,745.5	3,527.0	0.00	0.00	
13,370.5	0.30	239.53	12,586.0	2,213.9	-2,745.8	3,527.2	0.00	0.00	CORCORAN
13,400.0	0.30	239.53	12,615.5	2,213.8	-2,746.0	3,527.2	0.00	0.00	
13,490.5	0.30	239.53	12,706.0	2,213.6	-2,746.4	3,527.4	0.00	0.00	LOWER_SEGO
13,500.0	0.30	239.53	12,715.5	2,213.6	-2,746.4	3,527.4	0.00	0.00	
13,581.5	0.30	239.53	12,797.0	2,213.3	-2,746.8	3,527.6	0.00	0.00	SEGO
13,600.0	0.30	239.53	12,815.5	2,213.3	-2,746.9	3,527.6	0.00	0.00	
13,700.0	0.30	239.53	12,915.5	2,213.0	-2,747.3	3,527.8	0.00	0.00	
13,800.0	0.30	239.53	13,015.5	2,212.8	-2,747.8	3,528.0	0.00	0.00	
13,900.0	0.30	239.53	13,115.5	2,212.5	-2,748.2	3,528.1	0.00	0.00	
14,000.0	0.30	239.53	13,215.5	2,212.2	-2,748.7	3,528.3	0.00	0.00	
14,022.5	0.30	239.53	13,238.0	2,212.2	-2,748.8	3,528.4	0.00	0.00	Permit TD @ 14022.5' MD

Cathedral Energy Services

Planning Report

Database:	EDM 5000.1 US Multi Users DB	Local Co-ordinate Reference:	Well 8507A-23 L24 496
Company:	EnCana Oil & Gas (USA) Inc	TVD Reference:	KBE @ 8208.0ft (Original Well Elev)
Project:	Story Gulch	MD Reference:	KBE @ 8208.0ft (Original Well Elev)
Site:	L24 496	North Reference:	True
Well:	8507A-23 L24 496	Survey Calculation Method:	Minimum Curvature
Wellbore:	DD		
Design:	Plan #1		

Planned Survey

Measured Depth (ft)	Inclination (°)	Azimuth (°)	Vertical Depth (ft)	+N/-S (ft)	+E/-W (ft)	Vertical Section (ft)	Dogleg Rate (°/100ft)	Build Rate (°/100ft)	Comments / Formations
---------------------	-----------------	-------------	---------------------	------------	------------	-----------------------	-----------------------	----------------------	-----------------------

Targets

Target Name	Dip Angle (°)	Dip Dir. (°)	TVD (ft)	+N/-S (ft)	+E/-W (ft)	Northing (ft)	Easting (ft)	Latitude	Longitude
- hit/miss target									
- Shape									
8507A-23 L24 496 BHL	0.00	0.00	12,138.0	2,215.1	-2,743.8	1,687,390.54	2,259,153.19	39° 41' 28.34 N	108° 7' 58.57 W
- plan hits target center									
- Rectangle (sides W30.0 H50.0 D0.0)									
8507A-23 L24 496 TOG	0.00	0.00	8,275.0	2,225.1	-2,726.8	1,687,400.07	2,259,170.50	39° 41' 28.44 N	108° 7' 58.35 W
- plan hits target center									
- Point									

Formations

Measured Depth (ft)	Vertical Depth (ft)	Name	Lithology	Dip (°)	Dip Direction (°)
1,355.9	1,297.0	A_GROOVE			
2,698.6	2,503.0	GARDEN_GULCH / L-1			
6,445.1	5,868.0	WASATCH_G			
9,019.5	8,235.0	WILLIAMS_FORK			
9,059.5	8,275.0	TOG			
12,922.5	12,138.0	ROLLINS			
13,078.5	12,294.0	COZZETTE			
13,370.5	12,586.0	CORCORAN			
13,490.5	12,706.0	LOWER_SEGO			
13,581.5	12,797.0	SEGO			

Plan Annotations

Measured Depth (ft)	Vertical Depth (ft)	Local Coordinates		Comment
		+N/-S (ft)	+E/-W (ft)	
200.0	200.0	0.0	0.0	KOP @ 200' MD
1,069.3	1,039.6	122.9	-150.7	EOB; Inc=26.08°
8,190.1	7,435.4	2,102.2	-2,576.1	Start Drop -3.00
9,059.5	8,275.0	2,225.1	-2,726.8	EOD; Inc=0°
13,022.5	12,238.0	2,214.8	-2,744.3	Drillers TD @ 13022.5' MD
14,022.5	13,238.0	2,212.2	-2,748.8	Permit TD @ 14022.5' MD