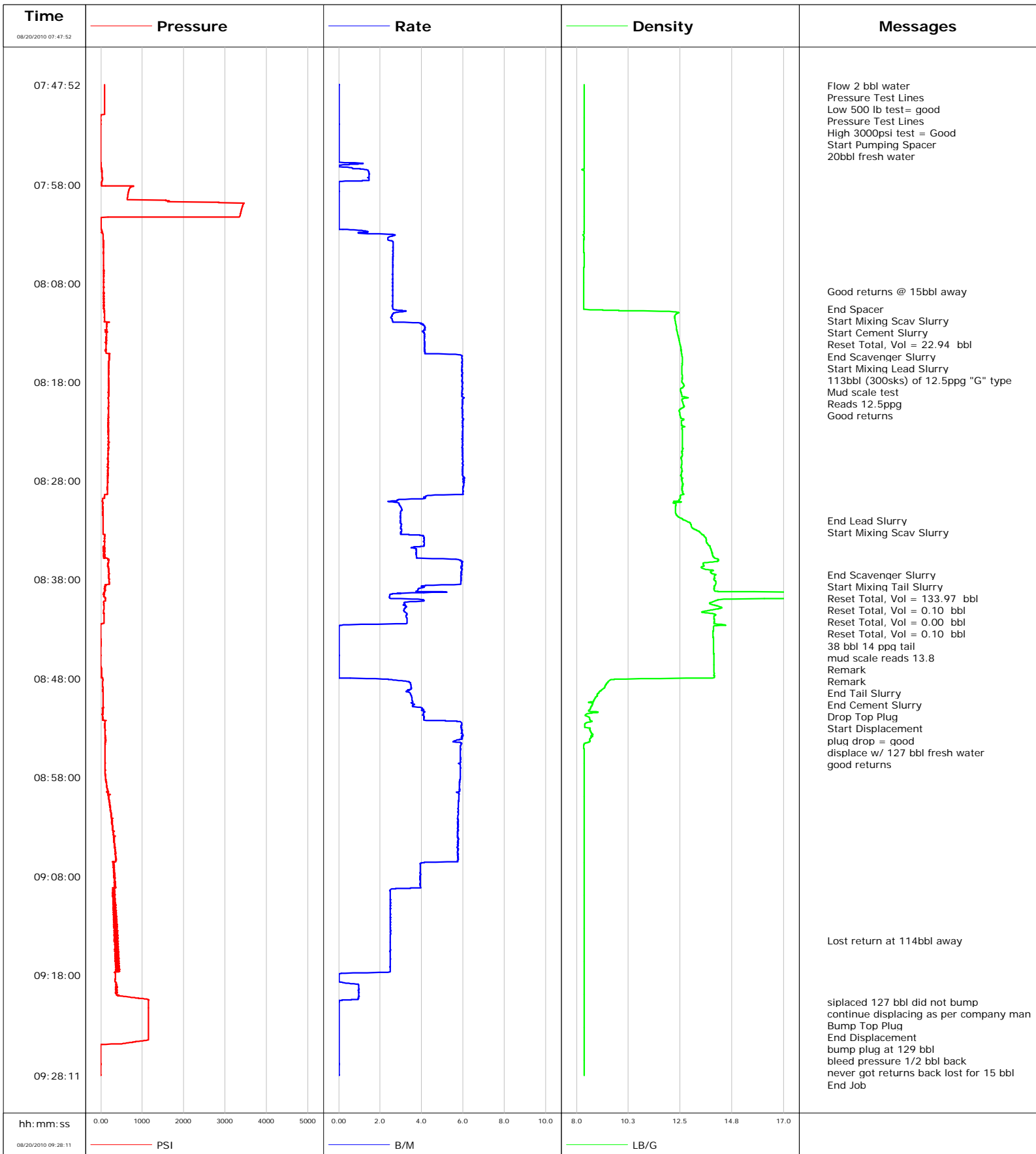


<b>Well</b>	WF15A-22 K22 596	<b>Client</b>	Encana
<b>Field</b>	N. Parachute	<b>SIR No.</b>	401541
<b>Engineer</b>	Dustin Cyrus Krueger	<b>Job Type</b>	9 5/8 surface
<b>Country</b>	United States	<b>Job Date</b>	08-19-2010





Well		Field	Job Start	Customer	Job Number	
WF15A-22 K22 596 WF04B-22 K22 596,1		N. Parachute	Aug/20/2010	Encana	401541	
Date	Time 24-hr clock	Treating Pressure PSI	Flow Rate B/M	Density LB/G	Volume BBL	Message
08/20/2010	07:59:50	2844	0.0	8.33	2.1	
08/20/2010	08:02:20	9	0.0	8.33	2.1	
08/20/2010	08:04:50	62	2.6	8.32	7.3	
08/20/2010	08:07:20	72	2.6	8.32	13.8	
08/20/2010	08:08:47					Good returns @ 15bbl away
08/20/2010	08:08:47	71	2.6	8.31	17.6	
08/20/2010	08:09:50	72	2.6	8.31	20.3	
08/20/2010	08:10:35					End Spacer
08/20/2010	08:10:35	68	2.6	8.31	22.3	
08/20/2010	08:10:39					Start Mixing Scav Slurry
08/20/2010	08:10:39	73	2.7	8.37	22.5	
08/20/2010	08:10:40					Start Cement Slurry
08/20/2010	08:10:40	73	2.7	8.59	22.5	
08/20/2010	08:10:49					Reset Total, Vol = 22.94 bbl
08/20/2010	08:10:49	86	3.2	11.65	22.9	
08/20/2010	08:12:20	144	4.2	12.33	27.5	
08/20/2010	08:13:52					End Scavenger Slurry
08/20/2010	08:13:52	130	4.2	12.46	33.8	
08/20/2010	08:13:53					Start Mixing Lead Slurry
08/20/2010	08:13:53	130	4.2	12.47	33.9	
08/20/2010	08:13:56					113bbl (300sks) of 12.5ppg "G" type
08/20/2010	08:13:56					Mud scale test
08/20/2010	08:13:56	128	4.2	12.47	34.1	
08/20/2010	08:13:57					Reads 12.5ppg
08/20/2010	08:13:57					Good returns
08/20/2010	08:13:57	131	4.2	12.47	34.1	
08/20/2010	08:14:50	101	4.2	12.54	37.8	
08/20/2010	08:17:20	185	5.9	12.59	52.1	
08/20/2010	08:19:50	179	6.0	12.58	67.0	
08/20/2010	08:22:20	180	6.0	12.56	81.9	
08/20/2010	08:24:50	183	6.0	12.60	96.9	
08/20/2010	08:27:20	170	6.0	12.55	111.8	
08/20/2010	08:29:50	47	3.5	12.48	126.1	
08/20/2010	08:32:00					End Lead Slurry
08/20/2010	08:32:00	53	3.0	12.70	132.5	
08/20/2010	08:32:02					Start Mixing Scav Slurry
08/20/2010	08:32:02	51	3.0	12.71	132.6	
08/20/2010	08:32:20	54	3.0	12.94	133.5	
08/20/2010	08:34:50	87	3.7	13.82	142.4	
08/20/2010	08:37:20	202	5.9	13.85	154.9	
08/20/2010	08:37:30					End Scavenger Slurry
08/20/2010	08:37:30	191	5.9	14.05	155.9	
08/20/2010	08:37:34					Start Mixing Tail Slurry
08/20/2010	08:37:34	193	5.9	14.02	156.3	
08/20/2010	08:37:40					Reset Total, Vol = 133.97 bbl
08/20/2010	08:37:40	196	5.9	13.99	156.9	
08/20/2010	08:37:41					Reset Total, Vol = 0.10 bbl
08/20/2010	08:37:41					Reset Total, Vol = 0.00 bbl
08/20/2010	08:37:41	196	5.9	13.99	157.0	
08/20/2010	08:37:42					Reset Total, Vol = 0.10 bbl
08/20/2010	08:37:42	196	5.9	13.98	157.1	
08/20/2010	08:39:50	109	2.5	18.12	166.5	
08/20/2010	08:41:31					38 bbl 14 ppg tail
08/20/2010	08:41:31					mud scale reads 13.8

Well		Field		Job Start		Customer		Job Number	
WF15A-22 K22 596 WF04B-22 K22 596,1		N. Parachute		Aug/20/2010		Encana		401541	
Date	Time 24-hr clock	Treating Pressure PSI	Flow Rate B/M	Density LB/G	Volume BBL	Message			
08/20/2010	08:41:32					Remark			
08/20/2010	08:41:32					Remark			
08/20/2010	08:41:32	74	3.3	14.04	172.1				
08/20/2010	08:42:20	76	3.3	13.98	174.8				
08/20/2010	08:42:44					End Tail Slurry			
08/20/2010	08:42:44	-3	0.0	13.94	175.4				
08/20/2010	08:42:46					End Cement Slurry			
08/20/2010	08:42:46	-3	0.0	13.94	175.4				
08/20/2010	08:42:48					Drop Top Plug			
08/20/2010	08:42:48	-3	0.0	13.94	175.4				
08/20/2010	08:42:49					Start Displacement			
08/20/2010	08:42:49	-3	0.0	13.94	175.4				
08/20/2010	08:42:50					plug drop = good			
08/20/2010	08:42:50	-3	0.0	13.94	175.4				
08/20/2010	08:42:51					displace w/ 127 bbl fresh water			
08/20/2010	08:42:51	-3	0.0	13.94	175.4				
08/20/2010	08:42:53					good returns			
08/20/2010	08:42:53	-4	0.0	13.94	175.4				
08/20/2010	08:44:50	-4	0.0	13.95	175.4				
08/20/2010	08:47:20	16	0.0	13.98	175.4				
08/20/2010	08:49:50	54	3.5	8.88	181.5				
08/20/2010	08:52:20	102	5.7	8.68	191.2				
08/20/2010	08:54:50	101	5.9	8.32	205.9				
08/20/2010	08:57:20	108	5.9	8.32	220.6				
08/20/2010	08:59:50	184	5.8	8.32	235.2				
08/20/2010	09:02:20	266	5.8	8.33	249.6				
08/20/2010	09:04:50	330	5.7	8.33	264.0				
08/20/2010	09:07:20	313	3.9	8.33	277.0				
08/20/2010	09:09:50	287	2.5	8.33	286.0				
08/20/2010	09:12:20	342	2.5	8.33	292.3				
08/20/2010	09:14:32					Lost return at 114bbl away			
08/20/2010	09:14:32	345	2.5	8.33	297.8				
08/20/2010	09:14:50	357	2.5	8.33	298.5				
08/20/2010	09:17:20	365	2.5	8.33	304.7				
08/20/2010	09:19:50	390	1.0	8.33	306.8				
08/20/2010	09:20:44					siplaced 127 bbl did not bump			
08/20/2010	09:20:44	1151	0.0	8.33	307.5				
08/20/2010	09:20:45					continue displacing as per company man			
08/20/2010	09:20:45	1152	0.0	8.33	307.5				
08/20/2010	09:21:18					Bump Top Plug			
08/20/2010	09:21:18	1152	0.0	8.33	307.5				
08/20/2010	09:21:19					End Displacement			
08/20/2010	09:21:19	1151	0.0	8.33	307.5				
08/20/2010	09:21:20					bump plug at 129 bbl			
08/20/2010	09:21:20	1152	0.0	8.33	307.5				
08/20/2010	09:22:20	1152	0.0	8.33	307.5				
08/20/2010	09:24:50	766	0.0	8.33	307.5				
08/20/2010	09:25:23					bleed pressure 1/2 bbl back			
08/20/2010	09:25:23	-9	0.0	8.33	307.5				
08/20/2010	09:27:19					never got returns back lost for 15 bbl			
08/20/2010	09:27:19	-10	0.0	8.33	307.5				
08/20/2010	09:27:20	-10	0.0	8.33	307.5				

<b>Well</b> WF15A-22 K22 596 WF04B-22 K22 596,1	<b>Field</b> N. Parachute	<b>Job Start</b> Aug/20/2010	<b>Customer</b> Encana	<b>Job Number</b> 401541
--	------------------------------	---------------------------------	---------------------------	-----------------------------

### Post Job Summary

Average Pump Rates, bbl/min					Volume of Fluid Injected, bbl			
<b>Slurry</b> 5.0	<b>N2</b>	<b>Mud</b> 0.0	<b>Maximum Rate</b> 6.9	<b>Total Slurry</b> 135.0	<b>Mud</b> 0.0	<b>Spacer</b> 20.0	<b>N2</b>	
Treating Pressure Summary, psi					Breakdown Fluid			
<b>Maximum</b> 3487	<b>Final</b> 500	<b>Average</b> 405	<b>Bump Plug to</b> 1100	<b>Breakdown</b>	<b>Type</b> FreshWater	<b>Volume</b> 343.0 bbl	<b>Density</b> 8.34 lb/gal	
<b>Avg. N2 Percent</b>	<b>Designed Slurry Volume</b> 135.0 bbl	<b>Displacement</b> 141.0 bbl	<b>Mix Water Temp</b> 72 degF	<b>Cement Circulated to Surface?</b> <input type="checkbox"/>	<b>Volume</b>			
				<b>Washed Thru Perfs</b> <input type="checkbox"/>	<b>To</b>			
<b>Customer or Authorized Representative</b> RANDY BURKE			<b>Schlumberger Supervisor</b> Dustin Cyrus Krueger		<b>Circulation Lost</b> <input type="checkbox"/>	<b>Job Completed</b> <input checked="" type="checkbox"/>		
					-	-		