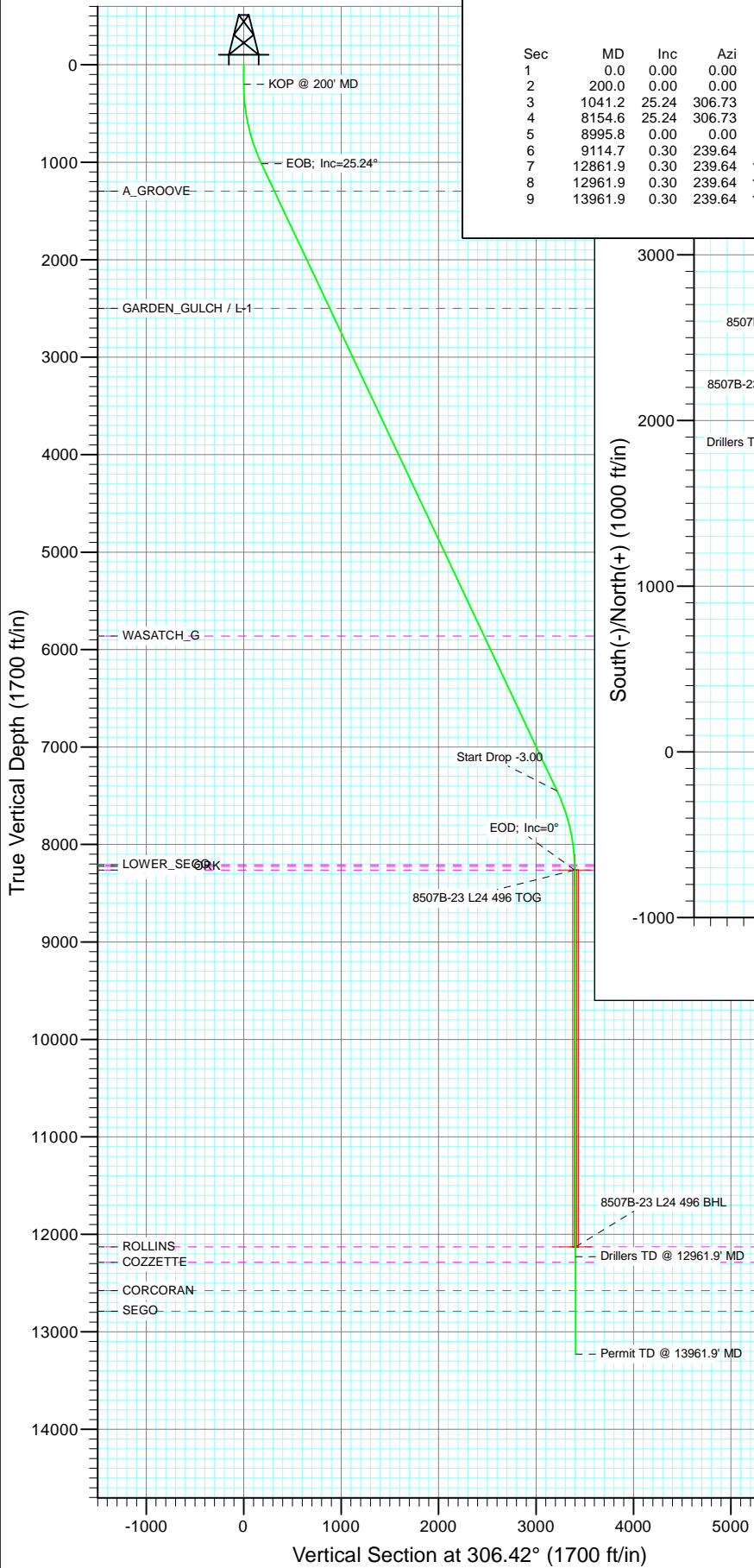
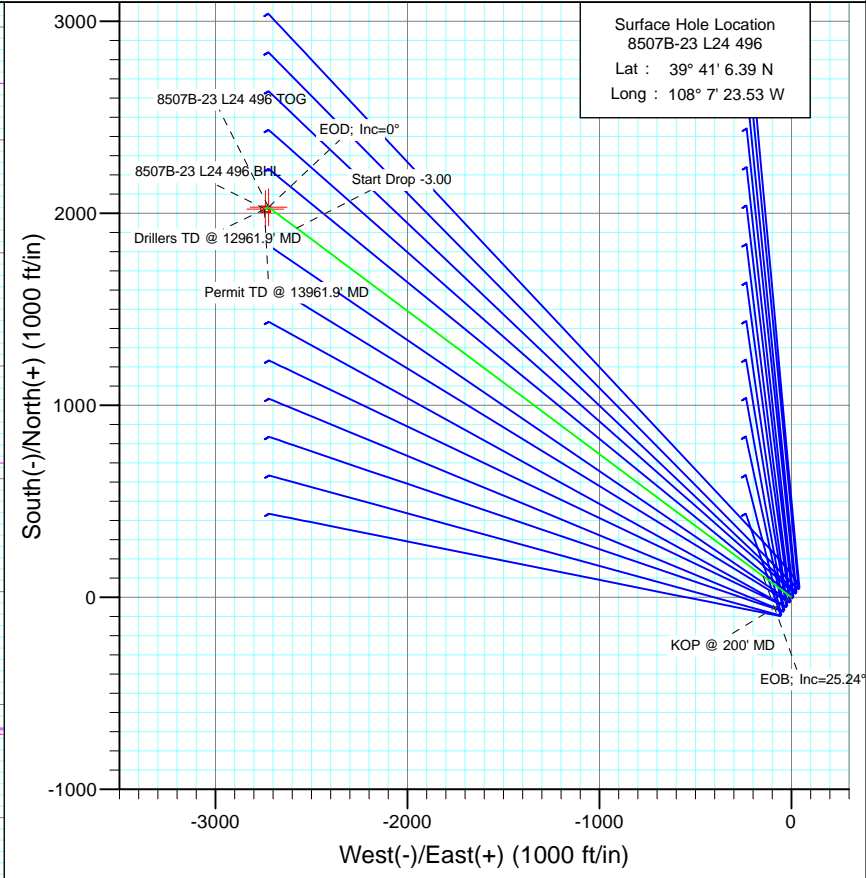




Project: Story Gulch
Site: L24 496
Well: 8507B-23 L24 496
Wellbore: DD
Design: Plan #1



SECTION DETAILS										
Sec	MD	Inc	Azi	TVD	+N/-S	+E/-W	Dleg	TFace	Vsect	Target
1	0.0	0.00	0.00	0.0	0.0	0.0	0.00	0.00	0.0	
2	200.0	0.00	0.00	200.0	0.0	0.0	0.00	0.00	0.0	
3	1041.2	25.24	306.73	1014.3	109.0	-146.1	3.00	306.73	182.3	
4	8154.6	25.24	306.73	7448.7	1922.8	-2576.8	0.00	0.00	3215.1	
5	8995.8	0.00	0.00	8263.0	2031.8	-2722.9	3.00	180.00	3397.4	8507B-23 L24 496 TOG
6	9114.7	0.30	239.64	8381.9	2031.6	-2723.2	0.25	239.64	3397.5	
7	12861.9	0.30	239.64	12129.0	2021.8	-2739.9	0.00	0.00	3405.1	8507B-23 L24 496 BHL
8	12961.9	0.30	239.64	12229.0	2021.6	-2740.4	0.00	0.00	3405.4	
9	13961.9	0.30	239.64	13229.0	2018.9	-2744.9	0.00	0.00	3407.4	



Azimuths to True North
Magnetic North: 10.44°

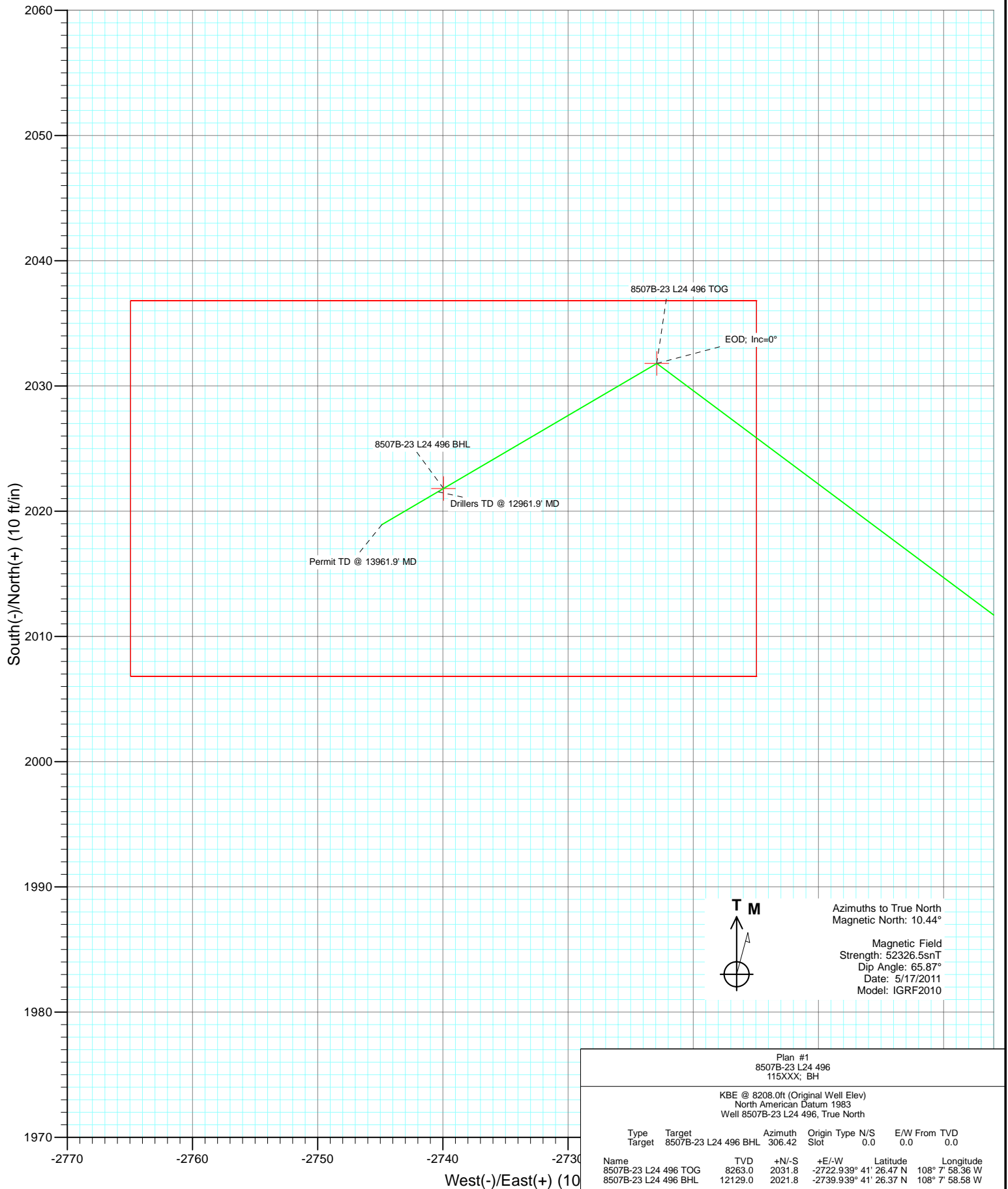
Magnetic Field
Strength: 52326.5nT
Dip Angle: 65.87°
Date: 5/17/2011
Model: IGRF2010

FORMATION TOP DETAILS			
TVDPath	MDPath	Formation	
1297.0	1353.8	A_GROOVE	
2500.0	2683.7	GARDEN_GULCH / L-1	
5860.0	6398.2	WASATCH_G	
8208.0	8940.8	LOWER_SEGO	
8223.0	8955.8	WILLIAMS_FORK	
8263.0	8995.8	TOG	
12129.0	12861.9	ROLLINS	
12287.0	13019.9	COZZETTE	
12577.0	13309.9	CORCORAN	
12788.0	13520.9	SEGO	

Plan #1 8507B-23 L24 496 115XXX; BH							
KBE @ 8208.0ft (Original Well Elev) North American Datum 1983 Well 8507B-23 L24 496, True North							
Type	Target	Azimuth	Origin	Type	N/S	E/W	From TVD
Target	8507B-23 L24 496 BHL	306.42	Slot		0.0	0.0	0.0
Name	TVD	+N/-S	+E/-W	Latitude	Longitude		
8507B-23 L24 496 TOG	8263.0	2031.8	-2722.939°	41° 26.47 N	108° 7' 58.36 W		
8507B-23 L24 496 BHL	12129.0	2021.8	-2739.939°	41° 26.37 N	108° 7' 58.58 W		



Project: Story Gulch
Site: L24 496
Well: 8507B-23 L24 496
Wellbore: DD
Design: Plan #1



Plan #1 8507B-23 L24 496 115XXX; BH							
KBE @ 8208.0ft (Original Well Elev) North American Datum 1983 Well 8507B-23 L24 496, True North							
Type	Target	Target	8507B-23 L24 496 BHL	Azimuth	Origin Type	N/S	E/W From
Target	8507B-23 L24 496 BHL	306.42	Slot	0.0	0.0	TVD	0.0
Name	TVD	+N/-S	+E/-W	Latitude	Longitude		
8507B-23 L24 496 TOG	8263.0	2031.8	-2722.939° 41'	26.47 N	108° 7' 58.36 W		
8507B-23 L24 496 BHL	12129.0	2021.8	-2739.939° 41'	26.37 N	108° 7' 58.58 W		

Cathedral Energy Services

Planning Report

Database:	EDM 5000.1 US Multi Users DB	Local Co-ordinate Reference:	Well 8507B-23 L24 496
Company:	EnCana Oil & Gas (USA) Inc	TVD Reference:	KBE @ 8208.0ft (Original Well Elev)
Project:	Story Gulch	MD Reference:	KBE @ 8208.0ft (Original Well Elev)
Site:	L24 496	North Reference:	True
Well:	8507B-23 L24 496	Survey Calculation Method:	Minimum Curvature
Wellbore:	DD		
Design:	Plan #1		

Project	Story Gulch		
Map System:	US State Plane 1983	System Datum:	Mean Sea Level
Geo Datum:	North American Datum 1983		
Map Zone:	Colorado Central Zone		

Site	L24 496			
Site Position:		Northing:	1,685,024.52 ft	Latitude: 39° 41' 5.72 N
From:	Lat/Long	Easting:	2,261,789.15 ft	Longitude: 108° 7' 23.99 W
Position Uncertainty:	0.0 ft	Slot Radius:	13.200 in	Grid Convergence: -1.65 °

Well	8507B-23 L24 496			
Well Position	+N/-S	0.0 ft	Northing:	1,685,091.24 ft
	+E/-W	0.0 ft	Easting:	2,261,827.06 ft
Position Uncertainty		0.0 ft	Wellhead Elevation:	ft
			Ground Level:	8,193.0 ft

Wellbore	DD				
Magnetics	Model Name	Sample Date	Declination (°)	Dip Angle (°)	Field Strength (nT)
	IGRF2010	5/17/2011	10.44	65.87	52,327

Design	Plan #1			
Audit Notes:				
Version:	Phase:	PLAN	Tie On Depth:	0.0
Vertical Section:	Depth From (TVD) (ft)	+N/-S (ft)	+E/-W (ft)	Direction (°)
	0.0	0.0	0.0	306.42

Plan Sections										
Measured Depth (ft)	Inclination (°)	Azimuth (°)	Vertical Depth (ft)	+N/-S (ft)	+E/-W (ft)	Dogleg Rate (°/100ft)	Build Rate (°/100ft)	Turn Rate (°/100ft)	TFO (°)	Target
0.0	0.00	0.00	0.0	0.0	0.0	0.00	0.00	0.00	0.00	
200.0	0.00	0.00	200.0	0.0	0.0	0.00	0.00	0.00	0.00	
1,041.2	25.24	306.73	1,014.3	109.0	-146.1	3.00	3.00	0.00	306.73	
8,154.6	25.24	306.73	7,448.7	1,922.8	-2,576.8	0.00	0.00	0.00	0.00	
8,995.8	0.00	0.00	8,263.0	2,031.8	-2,722.9	3.00	-3.00	0.00	180.00	8507B-23 L24 496 TC
9,114.7	0.30	239.64	8,381.9	2,031.6	-2,723.2	0.25	0.25	-101.22	239.64	
12,861.9	0.30	239.64	12,129.0	2,021.8	-2,739.9	0.00	0.00	0.00	0.00	8507B-23 L24 496 B+
12,961.9	0.30	239.64	12,229.0	2,021.6	-2,740.4	0.00	0.00	0.00	0.00	
13,961.9	0.30	239.64	13,229.0	2,018.9	-2,744.9	0.00	0.00	0.00	0.00	

Cathedral Energy Services

Planning Report

Database:	EDM 5000.1 US Multi Users DB	Local Co-ordinate Reference:	Well 8507B-23 L24 496
Company:	EnCana Oil & Gas (USA) Inc	TVD Reference:	KBE @ 8208.0ft (Original Well Elev)
Project:	Story Gulch	MD Reference:	KBE @ 8208.0ft (Original Well Elev)
Site:	L24 496	North Reference:	True
Well:	8507B-23 L24 496	Survey Calculation Method:	Minimum Curvature
Wellbore:	DD		
Design:	Plan #1		

Planned Survey

Measured Depth (ft)	Inclination (°)	Azimuth (°)	Vertical Depth (ft)	+N/-S (ft)	+E/-W (ft)	Vertical Section (ft)	Dogleg Rate (°/100ft)	Build Rate (°/100ft)	Comments / Formations
0.0	0.00	0.00	0.0	0.0	0.0	0.0	0.00	0.00	
100.0	0.00	0.00	100.0	0.0	0.0	0.0	0.00	0.00	
200.0	0.00	0.00	200.0	0.0	0.0	0.0	0.00	0.00	KOP @ 200' MD
300.0	3.00	306.73	300.0	1.6	-2.1	2.6	3.00	3.00	
400.0	6.00	306.73	399.6	6.3	-8.4	10.5	3.00	3.00	
500.0	9.00	306.73	498.8	14.1	-18.8	23.5	3.00	3.00	
600.0	12.00	306.73	597.1	25.0	-33.4	41.7	3.00	3.00	
700.0	15.00	306.73	694.3	38.9	-52.2	65.1	3.00	3.00	
800.0	18.00	306.73	790.2	55.9	-74.9	93.5	3.00	3.00	
900.0	21.00	306.73	884.4	75.9	-101.7	126.9	3.00	3.00	
1,000.0	24.00	306.73	976.8	98.7	-132.3	165.1	3.00	3.00	
1,041.2	25.24	306.73	1,014.3	109.0	-146.1	182.3	3.00	3.00	EOB; Inc=25.24°
1,100.0	25.24	306.73	1,067.5	124.0	-166.2	207.3	0.00	0.00	
1,200.0	25.24	306.73	1,157.9	149.5	-200.4	250.0	0.00	0.00	
1,300.0	25.24	306.73	1,248.4	175.0	-234.5	292.6	0.00	0.00	
1,353.8	25.24	306.73	1,297.0	188.7	-252.9	315.5	0.00	0.00	A_GROOVE
1,400.0	25.24	306.73	1,338.8	200.5	-268.7	335.3	0.00	0.00	
1,500.0	25.24	306.73	1,429.3	226.0	-302.9	377.9	0.00	0.00	
1,600.0	25.24	306.73	1,519.7	251.5	-337.0	420.5	0.00	0.00	
1,700.0	25.24	306.73	1,610.2	277.0	-371.2	463.2	0.00	0.00	
1,800.0	25.24	306.73	1,700.6	302.5	-405.4	505.8	0.00	0.00	
1,900.0	25.24	306.73	1,791.1	328.0	-439.5	548.4	0.00	0.00	
2,000.0	25.24	306.73	1,881.6	353.5	-473.7	591.1	0.00	0.00	
2,100.0	25.24	306.73	1,972.0	379.0	-507.9	633.7	0.00	0.00	
2,200.0	25.24	306.73	2,062.5	404.5	-542.1	676.3	0.00	0.00	
2,300.0	25.24	306.73	2,152.9	430.0	-576.2	719.0	0.00	0.00	
2,400.0	25.24	306.73	2,243.4	455.5	-610.4	761.6	0.00	0.00	
2,500.0	25.24	306.73	2,333.8	481.0	-644.6	804.2	0.00	0.00	
2,600.0	25.24	306.73	2,424.3	506.5	-678.7	846.9	0.00	0.00	
2,683.7	25.24	306.73	2,500.0	527.8	-707.3	882.6	0.00	0.00	GARDEN_GULCH / L-1
2,700.0	25.24	306.73	2,514.7	532.0	-712.9	889.5	0.00	0.00	
2,800.0	25.24	306.73	2,605.2	557.5	-747.1	932.1	0.00	0.00	
2,900.0	25.24	306.73	2,695.7	583.0	-781.3	974.8	0.00	0.00	
3,000.0	25.24	306.73	2,786.1	608.5	-815.4	1,017.4	0.00	0.00	
3,100.0	25.24	306.73	2,876.6	634.0	-849.6	1,060.0	0.00	0.00	
3,200.0	25.24	306.73	2,967.0	659.5	-883.8	1,102.7	0.00	0.00	
3,300.0	25.24	306.73	3,057.5	685.0	-917.9	1,145.3	0.00	0.00	
3,400.0	25.24	306.73	3,147.9	710.5	-952.1	1,188.0	0.00	0.00	
3,500.0	25.24	306.73	3,238.4	736.0	-986.3	1,230.6	0.00	0.00	
3,600.0	25.24	306.73	3,328.8	761.5	-1,020.5	1,273.2	0.00	0.00	
3,700.0	25.24	306.73	3,419.3	787.0	-1,054.6	1,315.9	0.00	0.00	
3,800.0	25.24	306.73	3,509.8	812.4	-1,088.8	1,358.5	0.00	0.00	
3,900.0	25.24	306.73	3,600.2	837.9	-1,123.0	1,401.1	0.00	0.00	
4,000.0	25.24	306.73	3,690.7	863.4	-1,157.1	1,443.8	0.00	0.00	
4,100.0	25.24	306.73	3,781.1	888.9	-1,191.3	1,486.4	0.00	0.00	
4,200.0	25.24	306.73	3,871.6	914.4	-1,225.5	1,529.0	0.00	0.00	
4,300.0	25.24	306.73	3,962.0	939.9	-1,259.7	1,571.7	0.00	0.00	
4,400.0	25.24	306.73	4,052.5	965.4	-1,293.8	1,614.3	0.00	0.00	
4,500.0	25.24	306.73	4,142.9	990.9	-1,328.0	1,656.9	0.00	0.00	
4,600.0	25.24	306.73	4,233.4	1,016.4	-1,362.2	1,699.6	0.00	0.00	
4,700.0	25.24	306.73	4,323.8	1,041.9	-1,396.3	1,742.2	0.00	0.00	
4,800.0	25.24	306.73	4,414.3	1,067.4	-1,430.5	1,784.8	0.00	0.00	

Cathedral Energy Services

Planning Report

Database:	EDM 5000.1 US Multi Users DB	Local Co-ordinate Reference:	Well 8507B-23 L24 496
Company:	EnCana Oil & Gas (USA) Inc	TVD Reference:	KBE @ 8208.0ft (Original Well Elev)
Project:	Story Gulch	MD Reference:	KBE @ 8208.0ft (Original Well Elev)
Site:	L24 496	North Reference:	True
Well:	8507B-23 L24 496	Survey Calculation Method:	Minimum Curvature
Wellbore:	DD		
Design:	Plan #1		

Planned Survey

Measured Depth (ft)	Inclination (°)	Azimuth (°)	Vertical Depth (ft)	+N/-S (ft)	+E/-W (ft)	Vertical Section (ft)	Dogleg Rate (°/100ft)	Build Rate (°/100ft)	Comments / Formations
4,900.0	25.24	306.73	4,504.8	1,092.9	-1,464.7	1,827.5	0.00	0.00	
5,000.0	25.24	306.73	4,595.2	1,118.4	-1,498.8	1,870.1	0.00	0.00	
5,100.0	25.24	306.73	4,685.7	1,143.9	-1,533.0	1,912.7	0.00	0.00	
5,200.0	25.24	306.73	4,776.1	1,169.4	-1,567.2	1,955.4	0.00	0.00	
5,300.0	25.24	306.73	4,866.6	1,194.9	-1,601.4	1,998.0	0.00	0.00	
5,400.0	25.24	306.73	4,957.0	1,220.4	-1,635.5	2,040.7	0.00	0.00	
5,500.0	25.24	306.73	5,047.5	1,245.9	-1,669.7	2,083.3	0.00	0.00	
5,600.0	25.24	306.73	5,137.9	1,271.4	-1,703.9	2,125.9	0.00	0.00	
5,700.0	25.24	306.73	5,228.4	1,296.9	-1,738.0	2,168.6	0.00	0.00	
5,800.0	25.24	306.73	5,318.9	1,322.4	-1,772.2	2,211.2	0.00	0.00	
5,900.0	25.24	306.73	5,409.3	1,347.9	-1,806.4	2,253.8	0.00	0.00	
6,000.0	25.24	306.73	5,499.8	1,373.4	-1,840.6	2,296.5	0.00	0.00	
6,100.0	25.24	306.73	5,590.2	1,398.9	-1,874.7	2,339.1	0.00	0.00	
6,200.0	25.24	306.73	5,680.7	1,424.4	-1,908.9	2,381.7	0.00	0.00	
6,300.0	25.24	306.73	5,771.1	1,449.9	-1,943.1	2,424.4	0.00	0.00	
6,398.2	25.24	306.73	5,860.0	1,474.9	-1,976.6	2,466.3	0.00	0.00	WASATCH_G
6,400.0	25.24	306.73	5,861.6	1,475.4	-1,977.2	2,467.0	0.00	0.00	
6,500.0	25.24	306.73	5,952.0	1,500.9	-2,011.4	2,509.6	0.00	0.00	
6,600.0	25.24	306.73	6,042.5	1,526.4	-2,045.6	2,552.3	0.00	0.00	
6,700.0	25.24	306.73	6,133.0	1,551.9	-2,079.8	2,594.9	0.00	0.00	
6,800.0	25.24	306.73	6,223.4	1,577.4	-2,113.9	2,637.5	0.00	0.00	
6,900.0	25.24	306.73	6,313.9	1,602.9	-2,148.1	2,680.2	0.00	0.00	
7,000.0	25.24	306.73	6,404.3	1,628.4	-2,182.3	2,722.8	0.00	0.00	
7,100.0	25.24	306.73	6,494.8	1,653.9	-2,216.4	2,765.5	0.00	0.00	
7,200.0	25.24	306.73	6,585.2	1,679.4	-2,250.6	2,808.1	0.00	0.00	
7,300.0	25.24	306.73	6,675.7	1,704.9	-2,284.8	2,850.7	0.00	0.00	
7,400.0	25.24	306.73	6,766.1	1,730.4	-2,319.0	2,893.4	0.00	0.00	
7,500.0	25.24	306.73	6,856.6	1,755.9	-2,353.1	2,936.0	0.00	0.00	
7,600.0	25.24	306.73	6,947.1	1,781.4	-2,387.3	2,978.6	0.00	0.00	
7,700.0	25.24	306.73	7,037.5	1,806.9	-2,421.5	3,021.3	0.00	0.00	
7,800.0	25.24	306.73	7,128.0	1,832.4	-2,455.6	3,063.9	0.00	0.00	
7,900.0	25.24	306.73	7,218.4	1,857.9	-2,489.8	3,106.5	0.00	0.00	
8,000.0	25.24	306.73	7,308.9	1,883.4	-2,524.0	3,149.2	0.00	0.00	
8,100.0	25.24	306.73	7,399.3	1,908.9	-2,558.1	3,191.8	0.00	0.00	
8,154.6	25.24	306.73	7,448.7	1,922.8	-2,576.8	3,215.1	0.00	0.00	Start Drop -3.00
8,200.0	23.87	306.73	7,490.0	1,934.1	-2,591.9	3,233.9	3.00	-3.00	
8,300.0	20.87	306.73	7,582.5	1,956.8	-2,622.4	3,272.0	3.00	-3.00	
8,400.0	17.87	306.73	7,676.8	1,976.7	-2,649.0	3,305.2	3.00	-3.00	
8,500.0	14.87	306.73	7,772.7	1,993.5	-2,671.6	3,333.4	3.00	-3.00	
8,600.0	11.87	306.73	7,870.0	2,007.4	-2,690.1	3,356.5	3.00	-3.00	
8,700.0	8.87	306.73	7,968.4	2,018.1	-2,704.6	3,374.5	3.00	-3.00	
8,800.0	5.87	306.73	8,067.5	2,025.8	-2,714.9	3,387.3	3.00	-3.00	
8,900.0	2.87	306.73	8,167.2	2,030.4	-2,721.0	3,395.0	3.00	-3.00	
8,940.8	1.65	306.73	8,208.0	2,031.3	-2,722.3	3,396.6	3.00	-3.00	LOWER_SEGO
8,955.8	1.20	306.73	8,223.0	2,031.5	-2,722.6	3,396.9	3.00	-3.00	WILLIAMS_FORK
8,995.8	0.00	0.00	8,263.0	2,031.8	-2,722.9	3,397.4	3.00	-3.00	EOD; Inc=0° - TOG - 8507B-23 L24 496 TOG
9,000.0	0.01	239.64	8,267.2	2,031.8	-2,722.9	3,397.4	0.25	0.25	
9,100.0	0.26	239.64	8,367.2	2,031.7	-2,723.1	3,397.5	0.25	0.25	
9,114.7	0.30	239.64	8,381.9	2,031.6	-2,723.2	3,397.5	0.25	0.25	
9,200.0	0.30	239.64	8,467.2	2,031.4	-2,723.5	3,397.7	0.00	0.00	
9,300.0	0.30	239.64	8,567.2	2,031.2	-2,724.0	3,397.9	0.00	0.00	
9,400.0	0.30	239.64	8,667.2	2,030.9	-2,724.4	3,398.1	0.00	0.00	

Cathedral Energy Services

Planning Report

Database:	EDM 5000.1 US Multi Users DB	Local Co-ordinate Reference:	Well 8507B-23 L24 496
Company:	EnCana Oil & Gas (USA) Inc	TVD Reference:	KBE @ 8208.0ft (Original Well Elev)
Project:	Story Gulch	MD Reference:	KBE @ 8208.0ft (Original Well Elev)
Site:	L24 496	North Reference:	True
Well:	8507B-23 L24 496	Survey Calculation Method:	Minimum Curvature
Wellbore:	DD		
Design:	Plan #1		

Planned Survey

Measured Depth (ft)	Inclination (°)	Azimuth (°)	Vertical Depth (ft)	+N/-S (ft)	+E/-W (ft)	Vertical Section (ft)	Dogleg Rate (°/100ft)	Build Rate (°/100ft)	Comments / Formations
9,500.0	0.30	239.64	8,767.2	2,030.6	-2,724.9	3,398.3	0.00	0.00	
9,600.0	0.30	239.64	8,867.2	2,030.4	-2,725.3	3,398.5	0.00	0.00	
9,700.0	0.30	239.64	8,967.2	2,030.1	-2,725.8	3,398.7	0.00	0.00	
9,800.0	0.30	239.64	9,067.2	2,029.8	-2,726.2	3,398.9	0.00	0.00	
9,900.0	0.30	239.64	9,167.2	2,029.6	-2,726.7	3,399.1	0.00	0.00	
10,000.0	0.30	239.64	9,267.2	2,029.3	-2,727.1	3,399.3	0.00	0.00	
10,100.0	0.30	239.64	9,367.2	2,029.1	-2,727.6	3,399.5	0.00	0.00	
10,200.0	0.30	239.64	9,467.2	2,028.8	-2,728.0	3,399.7	0.00	0.00	
10,300.0	0.30	239.64	9,567.2	2,028.5	-2,728.5	3,399.9	0.00	0.00	
10,400.0	0.30	239.64	9,667.2	2,028.3	-2,728.9	3,400.1	0.00	0.00	
10,500.0	0.30	239.64	9,767.2	2,028.0	-2,729.4	3,400.3	0.00	0.00	
10,600.0	0.30	239.64	9,867.2	2,027.7	-2,729.8	3,400.5	0.00	0.00	
10,700.0	0.30	239.64	9,967.2	2,027.5	-2,730.3	3,400.7	0.00	0.00	
10,800.0	0.30	239.64	10,067.2	2,027.2	-2,730.7	3,400.9	0.00	0.00	
10,900.0	0.30	239.64	10,167.2	2,027.0	-2,731.2	3,401.1	0.00	0.00	
11,000.0	0.30	239.64	10,267.2	2,026.7	-2,731.6	3,401.3	0.00	0.00	
11,100.0	0.30	239.64	10,367.2	2,026.4	-2,732.1	3,401.5	0.00	0.00	
11,200.0	0.30	239.64	10,467.2	2,026.2	-2,732.5	3,401.7	0.00	0.00	
11,300.0	0.30	239.64	10,567.2	2,025.9	-2,732.9	3,402.0	0.00	0.00	
11,400.0	0.30	239.64	10,667.2	2,025.7	-2,733.4	3,402.2	0.00	0.00	
11,500.0	0.30	239.64	10,767.2	2,025.4	-2,733.8	3,402.4	0.00	0.00	
11,600.0	0.30	239.64	10,867.2	2,025.1	-2,734.3	3,402.6	0.00	0.00	
11,700.0	0.30	239.64	10,967.2	2,024.9	-2,734.7	3,402.8	0.00	0.00	
11,800.0	0.30	239.64	11,067.2	2,024.6	-2,735.2	3,403.0	0.00	0.00	
11,900.0	0.30	239.64	11,167.2	2,024.3	-2,735.6	3,403.2	0.00	0.00	
12,000.0	0.30	239.64	11,267.1	2,024.1	-2,736.1	3,403.4	0.00	0.00	
12,100.0	0.30	239.64	11,367.1	2,023.8	-2,736.5	3,403.6	0.00	0.00	
12,200.0	0.30	239.64	11,467.1	2,023.6	-2,737.0	3,403.8	0.00	0.00	
12,300.0	0.30	239.64	11,567.1	2,023.3	-2,737.4	3,404.0	0.00	0.00	
12,400.0	0.30	239.64	11,667.1	2,023.0	-2,737.9	3,404.2	0.00	0.00	
12,500.0	0.30	239.64	11,767.1	2,022.8	-2,738.3	3,404.4	0.00	0.00	
12,600.0	0.30	239.64	11,867.1	2,022.5	-2,738.8	3,404.6	0.00	0.00	
12,700.0	0.30	239.64	11,967.1	2,022.2	-2,739.2	3,404.8	0.00	0.00	
12,800.0	0.30	239.64	12,067.1	2,022.0	-2,739.7	3,405.0	0.00	0.00	
12,861.9	0.30	239.64	12,129.0	2,021.8	-2,739.9	3,405.1	0.00	0.00	ROLLINS - 8507B-23 L24 496 BHL
12,900.0	0.30	239.64	12,167.1	2,021.7	-2,740.1	3,405.2	0.00	0.00	
12,961.9	0.30	239.64	12,229.0	2,021.6	-2,740.4	3,405.4	0.00	0.00	Drillers TD @ 12961.9' MD
13,000.0	0.30	239.64	12,267.1	2,021.5	-2,740.6	3,405.4	0.00	0.00	
13,019.9	0.30	239.64	12,287.0	2,021.4	-2,740.6	3,405.5	0.00	0.00	COZZETTE
13,100.0	0.30	239.64	12,367.1	2,021.2	-2,741.0	3,405.6	0.00	0.00	
13,200.0	0.30	239.64	12,467.1	2,020.9	-2,741.5	3,405.8	0.00	0.00	
13,300.0	0.30	239.64	12,567.1	2,020.7	-2,741.9	3,406.0	0.00	0.00	
13,309.9	0.30	239.64	12,577.0	2,020.6	-2,741.9	3,406.1	0.00	0.00	CORCORAN
13,400.0	0.30	239.64	12,667.1	2,020.4	-2,742.4	3,406.2	0.00	0.00	
13,500.0	0.30	239.64	12,767.1	2,020.1	-2,742.8	3,406.5	0.00	0.00	
13,520.9	0.30	239.64	12,788.0	2,020.1	-2,742.9	3,406.5	0.00	0.00	SEGO
13,600.0	0.30	239.64	12,867.1	2,019.9	-2,743.2	3,406.7	0.00	0.00	
13,700.0	0.30	239.64	12,967.1	2,019.6	-2,743.7	3,406.9	0.00	0.00	
13,800.0	0.30	239.64	13,067.1	2,019.4	-2,744.1	3,407.1	0.00	0.00	
13,900.0	0.30	239.64	13,167.1	2,019.1	-2,744.6	3,407.3	0.00	0.00	
13,961.9	0.30	239.64	13,229.0	2,018.9	-2,744.9	3,407.4	0.00	0.00	

Cathedral Energy Services

Planning Report

Database:	EDM 5000.1 US Multi Users DB	Local Co-ordinate Reference:	Well 8507B-23 L24 496
Company:	EnCana Oil & Gas (USA) Inc	TVD Reference:	KBE @ 8208.0ft (Original Well Elev)
Project:	Story Gulch	MD Reference:	KBE @ 8208.0ft (Original Well Elev)
Site:	L24 496	North Reference:	True
Well:	8507B-23 L24 496	Survey Calculation Method:	Minimum Curvature
Wellbore:	DD		
Design:	Plan #1		

Targets									
Target Name									
- hit/miss target	Dip Angle	Dip Dir.	TVD	+N/-S	+E/-W	Northing	Easting	Latitude	Longitude
- Shape	(°)	(°)	(ft)	(ft)	(ft)	(ft)	(ft)		
8507B-23 L24 496 TOG	0.00	0.00	8,263.0	2,031.8	-2,722.9	1,687,200.80	2,259,163.95	39° 41' 26.47 N	108° 7' 58.36 W
- plan hits target center									
- Point									
8507B-23 L24 496 BHL	0.00	0.00	12,129.0	2,021.8	-2,739.9	1,687,191.32	2,259,146.63	39° 41' 26.37 N	108° 7' 58.58 W
- plan hits target center									
- Rectangle (sides W30.0 H50.0 D0.0)									

Formations						
Measured Depth	Vertical Depth	Name	Lithology	Dip	Dip Direction	
(ft)	(ft)			(°)	(°)	
1,353.8	1,297.0	A_GROOVE				
2,683.7	2,500.0	GARDEN_GULCH / L-1				
6,398.2	5,860.0	WASATCH_G				
8,940.8	8,208.0	LOWER_SEGO				
8,955.8	8,223.0	WILLIAMS_FORK				
8,995.8	8,263.0	TOG				
12,861.9	12,129.0	ROLLINS				
13,019.9	12,287.0	COZZETTE				
13,309.9	12,577.0	CORCORAN				
13,520.9	12,788.0	SEGO				

Plan Annotations				
Measured Depth	Vertical Depth	Local Coordinates		Comment
(ft)	(ft)	+N/-S (ft)	+E/-W (ft)	
200.0	200.0	0.0	0.0	KOP @ 200' MD
1,041.2	1,014.3	109.0	-146.1	EOB; Inc=25.24°
8,154.6	7,448.7	1,922.8	-2,576.8	Start Drop -3.00
8,995.8	8,263.0	2,031.8	-2,722.9	EOD; Inc=0°
12,961.9	12,229.0	2,021.6	-2,740.4	Drillers TD @ 12961.9' MD
13,961.9	13,229.0	2,018.9	-2,744.9	Permit TD @ 13961.9' MD