

T4S, R96W, 6th P.M.

Rio Blanco Co.

Garfield Co.
COC064814

COC064814

COC064814

SEE SHEET 7A FOR EXISTING
IMPROVEMENT WITHIN 400' OF THE
PROPOSED WELL DISTURBANCE

NE Cor Sec 23
1953 Brass Cap,
0.6' High, Pile of
Stones
Lat: 39.695347°
Long: 108.126444°

1953 Brass Cap,
0.2' High, Pile of
Stones, Steel Post
Lat: 39.695158°
Long: 108.126422°

S89°51'03"W - 2648.68' (Meas. to True)
S89°51'03"W - 2648.10' (Meas. to CC)

N89°47'21"W - 2639.69' (Meas.)

1953 Brass Cap,
0.3' High, Pile of
Stones
Lat: 39.695158°
Long: 108.117036°

1953 Brass Cap,
1.5' High, Fence
Post
Lat: 39.695111°
Long: 108.107661°

1953 Brass Cap,
0.6' High, Steel
Post
Lat: 39.687869°
Long: 108.107669°

LINE TABLE		
LINE	BEARING	LENGTH
L1	N00°30'07"W	105.36'
L2	N00°04'12"E	68.88'

TARGET BOTTOM HOLE

E 1/4 Cor. Sec. 23,
1953 Brass Cap, 0.2'
High, Steel Post
Lat: 39.688369°
Long: 108.126478°

W 1/4 Cor. Sec. 24,
1953 Brass Cap, 0.9'
High, Steel Post
Lat: 39.688081°
Long: 108.126475°

SG 8505C-24 L24 496
Elev. UnGraded Ground = 8185.0'
Elev. Graded Ground = 8180.0'

1953 Brass Cap,
0.5' High
Lat: 39.680569°
Long: 108.117119°

1953 Brass Cap,
0.5' High, Pile of
Stones, Steel Post
Lat: 39.680594°
Long: 108.107672°

S89°40'00"W - 2641.14' (Meas.)

S89°39'25"W - 2660.17' (Meas.)

1953 Brass Cap
0.5' High, Mound of
Stones, Steel Post
Lat: 39.680547°
Long: 108.126500°

LEGEND:

└─┘ = 90° SYMBOL

● = PROPOSED WELL HEAD.

▲ = SECTION CORNERS LOCATED.

NAD 83 (TARGET BOTTOM HOLE)

LATITUDE = 39°41'24.47" (39.690131)
LONGITUDE = 108°07'26.74" (108.124094)

NAD 27 (TARGET BOTTOM HOLE)

LATITUDE = 39°41'24.56" (39.690156)
LONGITUDE = 108°07'24.45" (108.123458)

NAD 83 (SURFACE LOCATION)

LATITUDE = 39°41'06.18" (39.685050)
LONGITUDE = 108°07'23.59" (108.123219)

NAD 27 (SURFACE LOCATION)

LATITUDE = 39°41'06.27" (39.685075)
LONGITUDE = 108°07'21.30" (108.122583)

PDOP = 1.2

Encana OIL & GAS (USA) INC.

Well location, SG 8505C-24 L24 496, located
as shown in the NW 1/4 SW 1/4 of Section 24,
T4S, R96W, 6th P.M., Garfield County, Colorado.

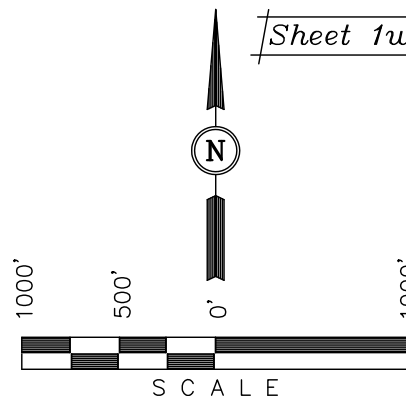
BASIS OF ELEVATION

BENCH MARK (H79) LOCATED IN THE NE 1/4 OF SECTION
25, T4S, R98W, 6th P.M. TAKEN FROM THE BULL FORK
QUADRANGLE, COLORADO, 7.5 MINUTE SERIES (TOPO
GRAPHICAL MAP) PUBLISHED BY THE UNITED STATES
DEPARTMENT OF THE INTERIOR, GEOLOGICAL SURVEY.
SAID ELEVATION IS MARKED AS BEING 8535 FEET.

BASIS OF BEARINGS

BASIS OF BEARINGS IS A G.P.S. OBSERVATION.

Sheet 1w of 11



CERTIFICATE

THIS IS TO CERTIFY THAT THE ABOVE PLAT WAS PREPARED FROM
FIELD NOTES OF ACTUAL SURVEYS MADE BY ME OR UNDER MY
SUPERVISION AND THAT THE SAME ARE TRUE AND CORRECT TO THE
BEST OF MY KNOWLEDGE AND BELIEF

REGISTERED LAND SURVEYOR
REGISTRATION NO. 17492
STATE OF COLORADO
08-09-2011

UINTAH ENGINEERING & LAND SURVEYING
85 SOUTH 200 EAST - VERNAL, UTAH 84078
(435) 789-1017

SCALE 1" = 1000'	DATE SURVEYED: 08-18-10	DATE DRAWN: 06-09-11
PARTY B.J. D.B. D.R.B.	REFERENCES G.L.O. PLAT	
WEATHER COOL	FILE Encana OIL & GAS (USA) INC.	