

NE Cor Sec 23
1953 Brass Cap,
0.6' High, Pile of
Stones
Lat: 39.695347°
Long: 108.126444°

T4S, R96W, 6th P.M.
Rio Blanco Co.

$S89^{\circ}51'03''W - 2648.68'$ (Meas. to True)
 $S89^{\circ}51'03''W - 2648.10'$ (Meas. to CC)

$N89^{\circ}47'21''W - 2639.69'$ (Meas.)

Garfield Co.
COC064814

1953 Brass Cap,
0.2' High, Pile of
Stones, Steel Post
Lat: 39.695158°
Long: 108.126422°

1953 Brass Cap,
0.3' High, Pile of
Stones
Lat: 39.695158°
Long: 108.117036°

1953 Brass Cap,
1.5' High, Fence
Post
Lat: 39.695111°
Long: 108.107661°

Lot 4

Lot 3

Lot 2

Lot 1

COC064814-

LINE TABLE		
LINE	BEARING	LENGTH
L1	N00°30'07"W	105.36'
L2	N00°04'12"E	68.88'

E 1/4 Cor. Sec. 23,
1953 Brass Cap, 0.2'
High, Steel Post
Lat: 39.688369°
Long: 108.126478°

W 1/4 Cor. Sec. 24,
1953 Brass Cap, 0.9'
High, Steel Post
Lat: 39.688081°
Long: 108.126475°

1953 Brass Cap,
0.6' High, Steel
Post
Lat: 39.687869°
Long: 108.107669°

SG 8507C-23 L24 496

Elev. UnGraded Ground = 8184.3'

Elev. Graded Ground = 8180.0'

NOTE:
THE PROPOSED BOTTOM HOLE FOR THIS WELL IS
LOCATED IN THE SW 1/4 NE 1/4 OF SECTION
23, T4S, R96W, 6th P.M. AT A DISTANCE OF
1904' FNL 1820' FEL. IT BEARS N56°08'58"W
3290.96' FROM THE PROPOSED WELL HEAD.

1953 Brass Cap,
0.5' High
Lat: 39.680569°
Long: 108.117119°

1953 Brass Cap,
0.5' High, Pile of
Stones, Steel Post
Lat: 39.680594°
Long: 108.107672°

S89°40'00"W - 2641.14' (Meas.)

$S89^{\circ}39'25''W - 2660.17'$ (Meas.)

1953 Brass Cap
0.5' High, Mound of
Stones, Steel Post
Lat: 39.680547°
Long: 108.126500°

SEE SHEET 7A FOR EXISTING
IMPROVEMENT WITHIN 400' OF THE
PROPOSED WELL DISTURBANCE

COC064814

LEGEND:

|| = 90° SYMBOL

● = PROPOSED WELL HEAD.

▲ = SECTION CORNERS LOCATED.

PDOP = 1.2

NAD 83 (SURFACE LOCATION)	
LATITUDE	= 39°41'06.22" (39.685061)
LONGITUDE	= 108°07'23.67" (108.123242)
NAD 27 (SURFACE LOCATION)	
LATITUDE	= 39°41'06.31" (39.685086)
LONGITUDE	= 108°07'21.39" (108.122608)

Encana OIL & GAS (USA) INC.

Well location, SG 8507C-23 L24 496 (SURFACE LOCATION), located as shown in the NW 1/4 SW 1/4 of Section 24, T4S, R96W, 6th P.M., Garfield County, Colorado.

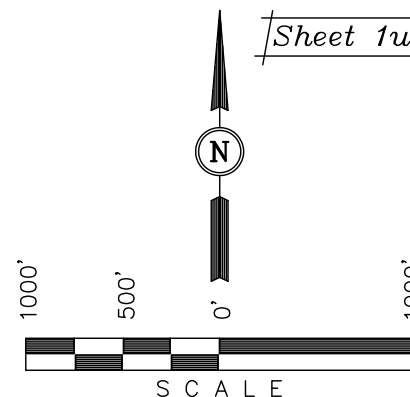
BASIS OF ELEVATION

BENCH MARK (H79) LOCATED IN THE NE 1/4 OF SECTION 25, T4S, R98W, 6th P.M. TAKEN FROM THE BULL FORK QUADRANGLE, COLORADO, 7.5 MINUTE SERIES (TOPO GRAPHICAL MAP) PUBLISHED BY THE UNITED STATES DEPARTMENT OF THE INTERIOR, GEOLOGICAL SURVEY. SAID ELEVATION IS MARKED AS BEING 8535 FEET.

BASIS OF BEARINGS

BASIS OF BEARINGS IS A G.P.S. OBSERVATION.

Sheet 1u of 11



CERTIFICATE

THIS IS TO CERTIFY THAT THE ABOVE PLAT WAS PREPARED FROM
FIELD NOTES OF ACTUAL SURVEYS MADE BY ME OR UNDER MY
SUPERVISION AND THAT THE SAME ARE TRUE AND CORRECT TO THE
BEST OF MY KNOWLEDGE AND BELIEF.

REGISTERED LAND SURVEYOR
REGISTRATION NO. 17492
STATE OF COLORADO
08-09-2011

UINTAH ENGINEERING & LAND SURVEYING
85 SOUTH 200 EAST - VERNAL, UTAH 84078
(435) 789-1017

SCALE 1" = 1000'	DATE SURVEYED: 08-18-10	DATE DRAWN: 06-09-11
PARTY B.J. D.B. D.R.B.	REFERENCES G.L.O. PLAT	
WEATHER COOL	FILE Encana OIL & GAS (USA) INC.	

T4S, R96W, 6th P.M.

1953 Brass Cap,
0.8' High, Pile of
Stones
Lat: 39.695233°
Long: 108.145544°

Rio Blanco Co.

1953 Brass Cap,
1.1' High, Small
Pile of Stones
Lat: 39.695336°
Long: 108.131125°

1953 Brass Cap,
0.6' High, Pile of
Stones
Lat: 39.695347°
Long: 108.126444°

S89°07'26"W -
1370.45' (Meas.)

S89°05'03"W -
1371.03' (Meas.)

S89°48'15"W -
1318.16' (Meas.)

S89°41'16"W -
1317.81' (Meas.)

COC064814

1978 Brass Cap,
0.5' High, Stones
Lat: 39.695283°
Long: 108.140678°

1953 Brass Cap,
1.1' High, Small
Pile of Stones
Lat: 39.695333°
Long: 108.135808°

Garfield Co.

Lot 1

NW Cor Sec 24
1953 Brass Cap,
0.2' High, Pile of
Stones, Steel Post
Lat: 39.695158°
Long: 108.126422°

1904'

SG 8507C-23 L24 496
TARGET BOTTOM HOLE

1820'

Lot 2

1958 Brass Cap 0.5'
High, Steel Post
Lat: 39.687828°
Long: 108.145436°

1978 Brass Cap
0.3' High, Stones
Lat: 39.687903°
Long: 108.140675°

23

31.68'
(G.L.O.)
True
Position

S87°20'59"W -
1341.33' (Meas.)

Lot 6

Lot 5

Lot 4

Lot 7

NOTE:
THE PROPOSED WELL HEAD IS LOCATED IN
THE NW 1/4 SW 1/4 OF SECTION 24, T4S,
R96W, 6th P.M. AT A DISTANCE OF 1642'
FSL 913' FWL. IT BEARS S56°08'58"E
3290.96' FROM THE TARGET BOTTOM HOLE.

E 1/4 Cor. Sec. 23,
1953 Brass Cap, 0.2'
High, Steel Post
Lat: 39.688369°
Long: 108.126478°

W 1/4 Cor. Sec. 24,
1953 Brass Cap, 0.9'
High, Steel Post
Lat: 39.688081°
Long: 108.126475°

N00°04'12"E - 2542.70' (Meas.)

N00°01'50"W - 2850.56' (Meas.)

N00°01'50"W - 2850.56' (Meas.)

N00°01'50"W - 2850.56' (Meas.)

N00°01'50"W - 2850.56' (Meas.)

N00°01'50"W - 2850.56' (Meas.)

Encana OIL & GAS (USA) INC.

Well location, SG 8507C-23 L24 496 (TARGET
BOTTOM HOLE), located as shown in the SW
1/4 NE 1/4 of Section 23, T4S, R96W, 6th
P.M., Garfield County, Colorado.

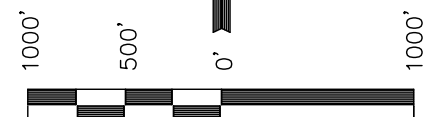
BASIS OF ELEVATION

BENCH MARK (H79) LOCATED IN THE NE 1/4 OF SECTION
25, T4S, R98W, 6th P.M. TAKEN FROM THE BULL FORK
QUADRANGLE, COLORADO, 7.5 MINUTE SERIES (TOPO
GRAPHICAL MAP) PUBLISHED BY THE UNITED STATES
DEPARTMENT OF THE INTERIOR, GEOLOGICAL SURVEY.
SAID ELEVATION IS MARKED AS BEING 8535 FEET.

BASIS OF BEARINGS

BASIS OF BEARINGS IS A G.P.S. OBSERVATION.

Sheet 1v of 11



SCALE

CERTIFICATE

THIS IS TO CERTIFY THAT THE ABOVE PLAT WAS PREPARED FROM
FIELD NOTES OF ACTUAL SURVEYS MADE BY ME OR UNDER MY
SUPERVISION AND THAT THE SAME ARE TRUE AND CORRECT TO THE
BEST OF MY KNOWLEDGE AND BELIEF

REGISTERED LAND SURVEYOR
REGISTRATION NO. 17492
STATE OF COLORADO
08-09-2011

LINE TABLE		
LINE	BEARING	LENGTH
L1	N00°30'07"W	105.36'
L2	N00°04'12"E	68.88'

1953 Brass Cap
0.4' High, Steel
Post, Pile of
Stones
Lat: 39.680583°
Long: 108.145383°

1953 Brass Cap
1.0' High, Pile of
Stones
Lat: 39.680553°
Long: 108.135925°

1953 Brass Cap
0.5' High, Mound of
Stones, Steel Post
Lat: 39.680547°
Long: 108.126500°

COC064814

N89°53'21"W - 2663.51' (Meas.)

S89°53'19"W - 2653.93' (Meas.)

LEGEND:

└─┘ = 90° SYMBOL

● = PROPOSED WELL HEAD.

▲ = SECTION CORNERS LOCATED.

△ = SECTION CORNERS RE-EST.
(Not Set on Ground)

NAD 83 (TARGET BOTTOM HOLE)

LATITUDE = 39°41'24.40" (39.690111)
LONGITUDE = 108°07'58.56" (108.132933)

NAD 27 (TARGET BOTTOM HOLE)

LATITUDE = 39°41'24.49" (39.690136)
LONGITUDE = 108°07'56.27" (108.132297)

UINTAH ENGINEERING & LAND SURVEYING
85 SOUTH 200 EAST - VERNAL, UTAH 84078
(435) 789-1017

SCALE 1" = 1000'	DATE SURVEYED: 08-18-10	DATE DRAWN: 06-09-11
PARTY B.J. D.B. D.R.B.	REFERENCES G.L.O. PLAT	
WEATHER COOL	FILE Encana OIL & GAS (USA) INC.	