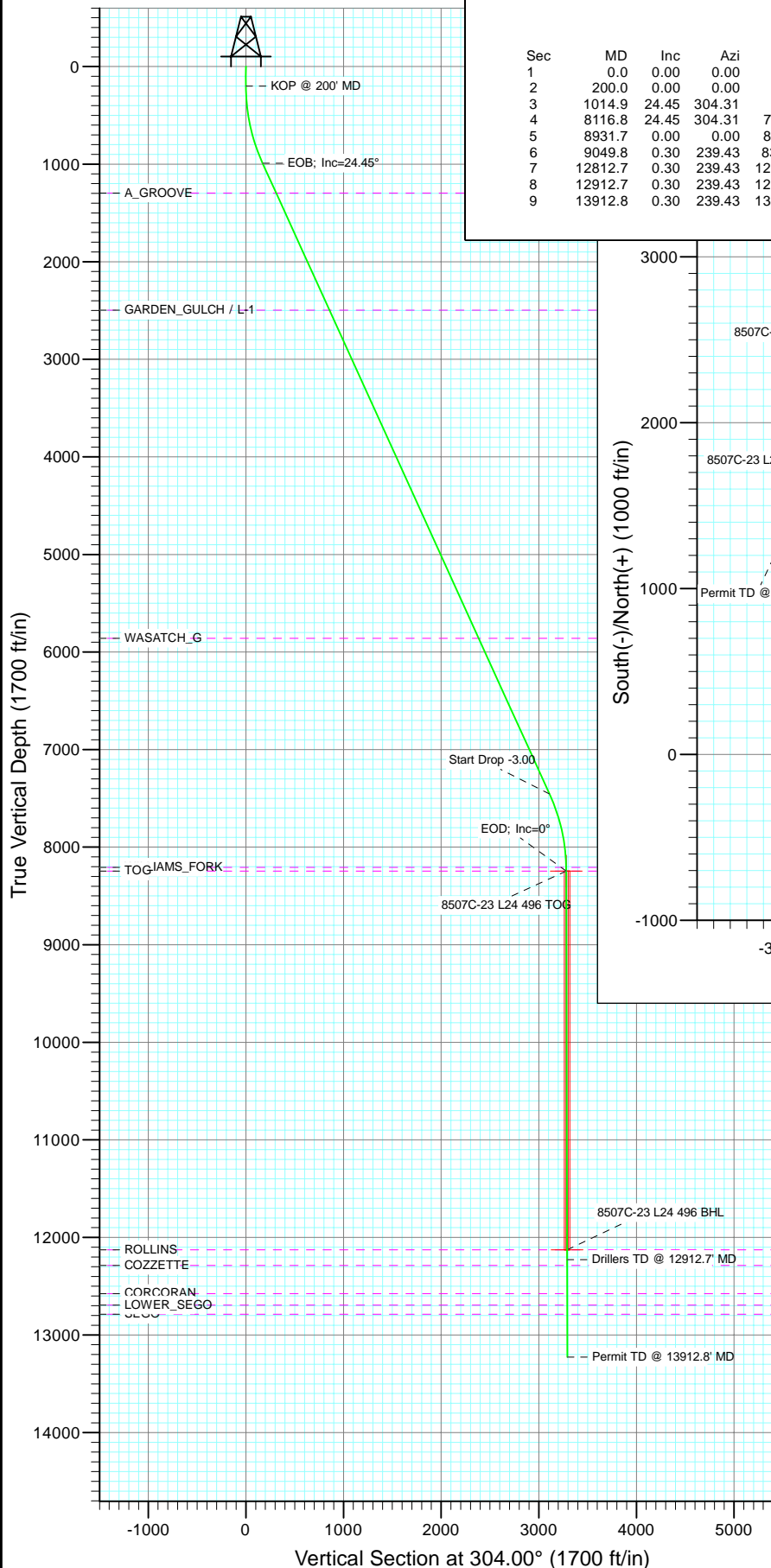
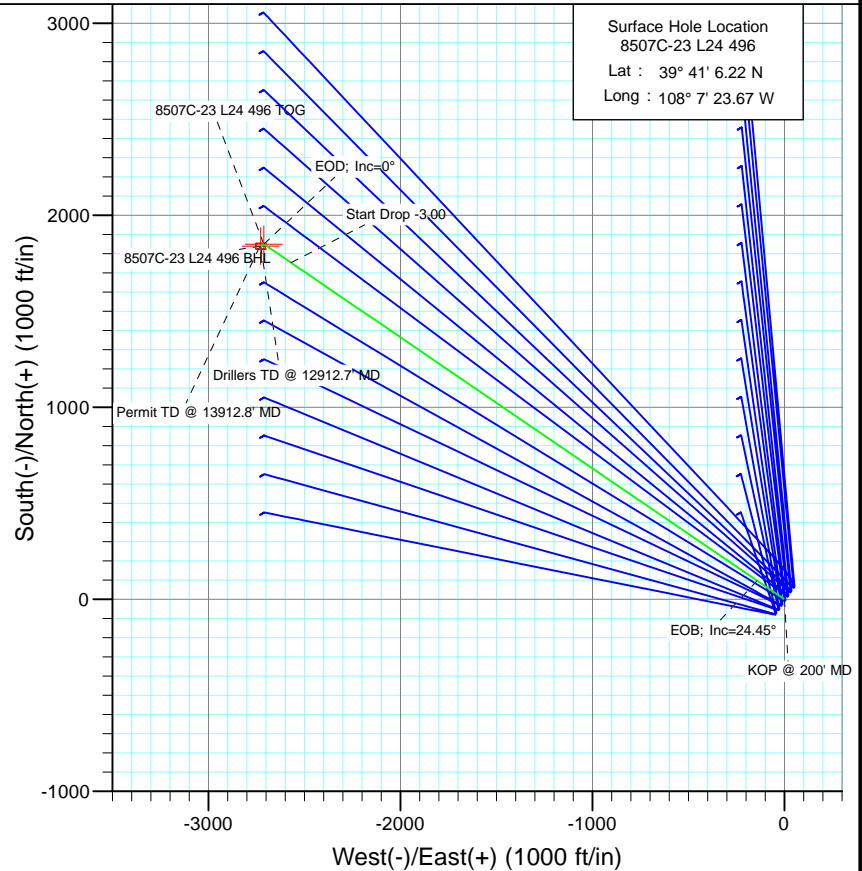




Project: Story Gulch
Site: L24 496
Well: 8507C-23 L24 496
Wellbore: DD
Design: Plan #1



SECTION DETAILS										
Sec	MD	Inc	Azi	TVD	+N/-S	+E/-W	Dleg	TFace	Vsect	Target
1	0.0	0.00	0.00	0.0	0.0	0.0	0.00	0.00	0.0	
2	200.0	0.00	0.00	200.0	0.0	0.0	0.00	0.00	0.0	
3	1014.9	24.45	304.31	990.4	96.5	-141.4	3.00	304.31	171.2	
4	8116.8	24.45	304.31	7455.6	1753.2	-2569.1	0.00	0.00	3110.2	
5	8931.7	0.00	0.00	8246.0	1849.7	-2710.5	3.00	180.00	3281.4	8507C-23 L24 496 TOG
6	9049.8	0.30	239.43	8364.1	1849.5	-2710.8	0.25	239.43	3281.6	
7	12812.7	0.30	239.43	12127.0	1839.7	-2727.5	0.00	0.00	3289.9	8507C-23 L24 496 BHL
8	12912.7	0.30	239.43	12227.0	1839.4	-2727.9	0.00	0.00	3290.1	
9	13912.8	0.30	239.43	13227.0	1836.8	-2732.3	0.00	0.00	3292.3	



Azimuths to True North
Magnetic North: 10.44°

Magnetic Field
Strength: 52326.5nT
Dip Angle: 65.87°
Date: 5/17/2011
Model: IGRF2010

FORMATION TOP DETAILS

TVDPath	MDPath	Formation
1296.0	1350.6	A_GROOVE
2496.0	2668.8	GARDEN_GULCH / L-1
5859.0	6363.0	WASATCH_G
8206.0	8891.7	WILLIAMS_FORK
8246.0	8931.7	TOG
12127.0	12812.7	ROLLINS
12286.0	12971.7	COZZETTE
12575.0	13260.7	CORCORAN
12693.0	13378.7	LOWER_SEGO
12787.0	13472.7	SEGO

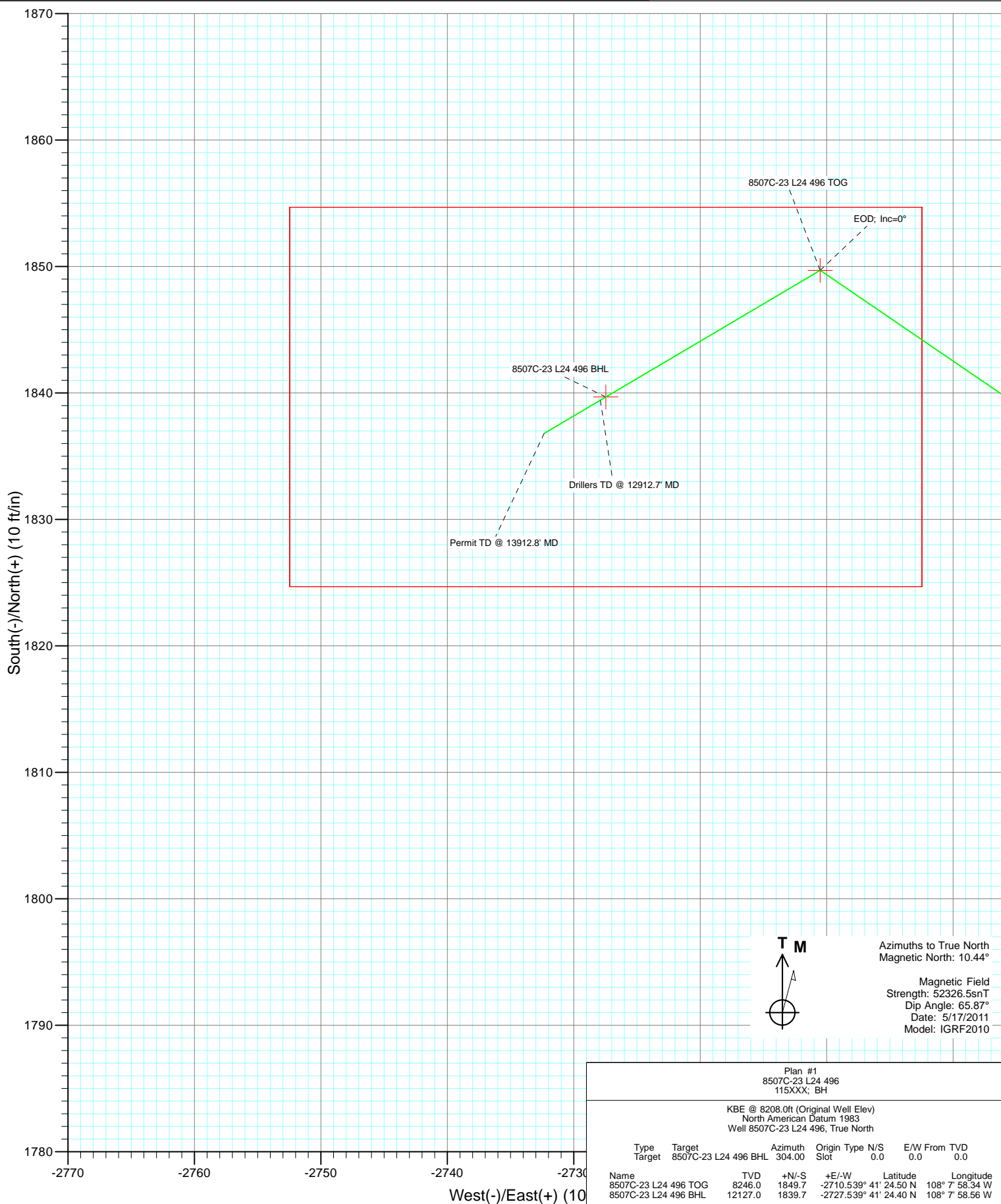
Plan #1
8507C-23 L24 496
115XXX; BH

KBE @ 8208.0ft (Original Well Elev)
North American Datum 1983
Well 8507C-23 L24 496, True North

Type	Target	Azimuth	Origin	Type	N/S	E/W	From	TVD
Target	8507C-23 L24 496 BHL	304.00	Slot	0.0	0.0	0.0		0.0
Name	8507C-23 L24 496 TOG	TVD	+N/-S	+E/-W	Latitude	Longitude		
		8246.0	1849.7	-2710.539°	41° 24.50 N	108° 7' 58.34 W		
	8507C-23 L24 496 BHL	12127.0	1839.7	-2727.539°	41° 24.40 N	108° 7' 58.56 W		



Project: Story Gulch
Site: L24 496
Well: 8507C-23 L24 496
Wellbore: DD
Design: Plan #1



Cathedral Energy Services

Planning Report

Database:	EDM 5000.1 US Multi Users DB	Local Co-ordinate Reference:	Well 8507C-23 L24 496
Company:	EnCana Oil & Gas (USA) Inc	TVD Reference:	KBE @ 8208.0ft (Original Well Elev)
Project:	Story Gulch	MD Reference:	KBE @ 8208.0ft (Original Well Elev)
Site:	L24 496	North Reference:	True
Well:	8507C-23 L24 496	Survey Calculation Method:	Minimum Curvature
Wellbore:	DD		
Design:	Plan #1		

Project	Story Gulch		
Map System:	US State Plane 1983	System Datum:	Mean Sea Level
Geo Datum:	North American Datum 1983		
Map Zone:	Colorado Central Zone		

Site	L24 496				
Site Position:		Northing:	1,685,024.52 ft	Latitude:	39° 41' 5.72 N
From:	Lat/Long	Easting:	2,261,789.15 ft	Longitude:	108° 7' 23.99 W
Position Uncertainty:	0.0 ft	Slot Radius:	13.200 in	Grid Convergence:	-1.65 °

Well	8507C-23 L24 496					
Well Position	+N/-S	0.0 ft	Northing:	1,685,074.36 ft	Latitude:	39° 41' 6.22 N
	+E/-W	0.0 ft	Easting:	2,261,815.62 ft	Longitude:	108° 7' 23.67 W
Position Uncertainty		0.0 ft	Wellhead Elevation:	ft	Ground Level:	8,193.0 ft

Wellbore	DD				
Magnetics	Model Name	Sample Date	Declination (°)	Dip Angle (°)	Field Strength (nT)
	IGRF2010	5/17/2011	10.44	65.87	52,326

Design	Plan #1			
Audit Notes:				
Version:	Phase:	PLAN	Tie On Depth:	0.0
Vertical Section:	Depth From (TVD) (ft)	+N/-S (ft)	+E/-W (ft)	Direction (°)
	0.0	0.0	0.0	304.00

Plan Sections										
Measured Depth (ft)	Inclination (°)	Azimuth (°)	Vertical Depth (ft)	+N/-S (ft)	+E/-W (ft)	Dogleg Rate (°/100ft)	Build Rate (°/100ft)	Turn Rate (°/100ft)	TFO (°)	Target
0.0	0.00	0.00	0.0	0.0	0.0	0.00	0.00	0.00	0.00	
200.0	0.00	0.00	200.0	0.0	0.0	0.00	0.00	0.00	0.00	
1,014.9	24.45	304.31	990.4	96.5	-141.4	3.00	3.00	0.00	304.31	
8,116.8	24.45	304.31	7,455.6	1,753.2	-2,569.1	0.00	0.00	0.00	0.00	
8,931.7	0.00	0.00	8,246.0	1,849.7	-2,710.5	3.00	-3.00	0.00	180.00	8507C-23 L24 496 TC
9,049.8	0.30	239.43	8,364.1	1,849.5	-2,710.8	0.25	0.25	-102.11	239.43	
12,812.7	0.30	239.43	12,127.0	1,839.7	-2,727.5	0.00	0.00	0.00	0.00	8507C-23 L24 496 BH
12,912.7	0.30	239.43	12,227.0	1,839.4	-2,727.9	0.00	0.00	0.00	0.00	
13,912.8	0.30	239.43	13,227.0	1,836.8	-2,732.3	0.00	0.00	0.00	0.00	

Cathedral Energy Services

Planning Report

Database:	EDM 5000.1 US Multi Users DB	Local Co-ordinate Reference:	Well 8507C-23 L24 496
Company:	EnCana Oil & Gas (USA) Inc	TVD Reference:	KBE @ 8208.0ft (Original Well Elev)
Project:	Story Gulch	MD Reference:	KBE @ 8208.0ft (Original Well Elev)
Site:	L24 496	North Reference:	True
Well:	8507C-23 L24 496	Survey Calculation Method:	Minimum Curvature
Wellbore:	DD		
Design:	Plan #1		

Planned Survey

Measured Depth (ft)	Inclination (°)	Azimuth (°)	Vertical Depth (ft)	+N/-S (ft)	+E/-W (ft)	Vertical Section (ft)	Dogleg Rate (°/100ft)	Build Rate (°/100ft)	Comments / Formations
0.0	0.00	0.00	0.0	0.0	0.0	0.0	0.00	0.00	
100.0	0.00	0.00	100.0	0.0	0.0	0.0	0.00	0.00	
200.0	0.00	0.00	200.0	0.0	0.0	0.0	0.00	0.00	KOP @ 200' MD
300.0	3.00	304.31	300.0	1.5	-2.2	2.6	3.00	3.00	
400.0	6.00	304.31	399.6	5.9	-8.6	10.5	3.00	3.00	
500.0	9.00	304.31	498.8	13.3	-19.4	23.5	3.00	3.00	
600.0	12.00	304.31	597.1	23.5	-34.5	41.7	3.00	3.00	
700.0	15.00	304.31	694.3	36.7	-53.8	65.1	3.00	3.00	
800.0	18.00	304.31	790.2	52.7	-77.2	93.5	3.00	3.00	
900.0	21.00	304.31	884.4	71.5	-104.8	126.9	3.00	3.00	
1,000.0	24.00	304.31	976.8	93.1	-136.4	165.1	3.00	3.00	
1,014.9	24.45	304.31	990.4	96.5	-141.4	171.2	3.00	3.00	EOB; Inc=24.45°
1,100.0	24.45	304.31	1,067.9	116.4	-170.5	206.4	0.00	0.00	
1,200.0	24.45	304.31	1,158.9	139.7	-204.7	247.8	0.00	0.00	
1,300.0	24.45	304.31	1,249.9	163.0	-238.9	289.2	0.00	0.00	
1,350.6	24.45	304.31	1,296.0	174.8	-256.2	310.1	0.00	0.00	A_GROOVE
1,400.0	24.45	304.31	1,341.0	186.4	-273.1	330.6	0.00	0.00	
1,500.0	24.45	304.31	1,432.0	209.7	-307.3	372.0	0.00	0.00	
1,600.0	24.45	304.31	1,523.0	233.0	-341.4	413.4	0.00	0.00	
1,700.0	24.45	304.31	1,614.1	256.3	-375.6	454.7	0.00	0.00	
1,800.0	24.45	304.31	1,705.1	279.7	-409.8	496.1	0.00	0.00	
1,900.0	24.45	304.31	1,796.1	303.0	-444.0	537.5	0.00	0.00	
2,000.0	24.45	304.31	1,887.2	326.3	-478.2	578.9	0.00	0.00	
2,100.0	24.45	304.31	1,978.2	349.6	-512.4	620.3	0.00	0.00	
2,200.0	24.45	304.31	2,069.3	373.0	-546.5	661.7	0.00	0.00	
2,300.0	24.45	304.31	2,160.3	396.3	-580.7	703.0	0.00	0.00	
2,400.0	24.45	304.31	2,251.3	419.6	-614.9	744.4	0.00	0.00	
2,500.0	24.45	304.31	2,342.4	442.9	-649.1	785.8	0.00	0.00	
2,600.0	24.45	304.31	2,433.4	466.3	-683.3	827.2	0.00	0.00	
2,668.8	24.45	304.31	2,496.0	482.3	-706.8	855.7	0.00	0.00	GARDEN_GULCH / L-1
2,700.0	24.45	304.31	2,524.4	489.6	-717.5	868.6	0.00	0.00	
2,800.0	24.45	304.31	2,615.5	512.9	-751.6	910.0	0.00	0.00	
2,900.0	24.45	304.31	2,706.5	536.3	-785.8	951.3	0.00	0.00	
3,000.0	24.45	304.31	2,797.5	559.6	-820.0	992.7	0.00	0.00	
3,100.0	24.45	304.31	2,888.6	582.9	-854.2	1,034.1	0.00	0.00	
3,200.0	24.45	304.31	2,979.6	606.2	-888.4	1,075.5	0.00	0.00	
3,300.0	24.45	304.31	3,070.6	629.6	-922.5	1,116.9	0.00	0.00	
3,400.0	24.45	304.31	3,161.7	652.9	-956.7	1,158.3	0.00	0.00	
3,500.0	24.45	304.31	3,252.7	676.2	-990.9	1,199.6	0.00	0.00	
3,600.0	24.45	304.31	3,343.7	699.5	-1,025.1	1,241.0	0.00	0.00	
3,700.0	24.45	304.31	3,434.8	722.9	-1,059.3	1,282.4	0.00	0.00	
3,800.0	24.45	304.31	3,525.8	746.2	-1,093.5	1,323.8	0.00	0.00	
3,900.0	24.45	304.31	3,616.8	769.5	-1,127.6	1,365.2	0.00	0.00	
4,000.0	24.45	304.31	3,707.9	792.9	-1,161.8	1,406.6	0.00	0.00	
4,100.0	24.45	304.31	3,798.9	816.2	-1,196.0	1,447.9	0.00	0.00	
4,200.0	24.45	304.31	3,890.0	839.5	-1,230.2	1,489.3	0.00	0.00	
4,300.0	24.45	304.31	3,981.0	862.8	-1,264.4	1,530.7	0.00	0.00	
4,400.0	24.45	304.31	4,072.0	886.2	-1,298.6	1,572.1	0.00	0.00	
4,500.0	24.45	304.31	4,163.1	909.5	-1,332.7	1,613.5	0.00	0.00	
4,600.0	24.45	304.31	4,254.1	932.8	-1,366.9	1,654.9	0.00	0.00	
4,700.0	24.45	304.31	4,345.1	956.1	-1,401.1	1,696.2	0.00	0.00	
4,800.0	24.45	304.31	4,436.2	979.5	-1,435.3	1,737.6	0.00	0.00	

Cathedral Energy Services

Planning Report

Database:	EDM 5000.1 US Multi Users DB	Local Co-ordinate Reference:	Well 8507C-23 L24 496
Company:	EnCana Oil & Gas (USA) Inc	TVD Reference:	KBE @ 8208.0ft (Original Well Elev)
Project:	Story Gulch	MD Reference:	KBE @ 8208.0ft (Original Well Elev)
Site:	L24 496	North Reference:	True
Well:	8507C-23 L24 496	Survey Calculation Method:	Minimum Curvature
Wellbore:	DD		
Design:	Plan #1		

Planned Survey

Measured Depth (ft)	Inclination (°)	Azimuth (°)	Vertical Depth (ft)	+N/-S (ft)	+E/-W (ft)	Vertical Section (ft)	Dogleg Rate (°/100ft)	Build Rate (°/100ft)	Comments / Formations
4,900.0	24.45	304.31	4,527.2	1,002.8	-1,469.5	1,779.0	0.00	0.00	
5,000.0	24.45	304.31	4,618.2	1,026.1	-1,503.7	1,820.4	0.00	0.00	
5,100.0	24.45	304.31	4,709.3	1,049.5	-1,537.8	1,861.8	0.00	0.00	
5,200.0	24.45	304.31	4,800.3	1,072.8	-1,572.0	1,903.2	0.00	0.00	
5,300.0	24.45	304.31	4,891.3	1,096.1	-1,606.2	1,944.5	0.00	0.00	
5,400.0	24.45	304.31	4,982.4	1,119.4	-1,640.4	1,985.9	0.00	0.00	
5,500.0	24.45	304.31	5,073.4	1,142.8	-1,674.6	2,027.3	0.00	0.00	
5,600.0	24.45	304.31	5,164.4	1,166.1	-1,708.8	2,068.7	0.00	0.00	
5,700.0	24.45	304.31	5,255.5	1,189.4	-1,742.9	2,110.1	0.00	0.00	
5,800.0	24.45	304.31	5,346.5	1,212.7	-1,777.1	2,151.5	0.00	0.00	
5,900.0	24.45	304.31	5,437.5	1,236.1	-1,811.3	2,192.8	0.00	0.00	
6,000.0	24.45	304.31	5,528.6	1,259.4	-1,845.5	2,234.2	0.00	0.00	
6,100.0	24.45	304.31	5,619.6	1,282.7	-1,879.7	2,275.6	0.00	0.00	
6,200.0	24.45	304.31	5,710.7	1,306.1	-1,913.9	2,317.0	0.00	0.00	
6,300.0	24.45	304.31	5,801.7	1,329.4	-1,948.0	2,358.4	0.00	0.00	
6,363.0	24.45	304.31	5,859.0	1,344.1	-1,969.6	2,384.4	0.00	0.00	WASATCH_G
6,400.0	24.45	304.31	5,892.7	1,352.7	-1,982.2	2,399.8	0.00	0.00	
6,500.0	24.45	304.31	5,983.8	1,376.0	-2,016.4	2,441.1	0.00	0.00	
6,600.0	24.45	304.31	6,074.8	1,399.4	-2,050.6	2,482.5	0.00	0.00	
6,700.0	24.45	304.31	6,165.8	1,422.7	-2,084.8	2,523.9	0.00	0.00	
6,800.0	24.45	304.31	6,256.9	1,446.0	-2,118.9	2,565.3	0.00	0.00	
6,900.0	24.45	304.31	6,347.9	1,469.3	-2,153.1	2,606.7	0.00	0.00	
7,000.0	24.45	304.31	6,438.9	1,492.7	-2,187.3	2,648.1	0.00	0.00	
7,100.0	24.45	304.31	6,530.0	1,516.0	-2,221.5	2,689.4	0.00	0.00	
7,200.0	24.45	304.31	6,621.0	1,539.3	-2,255.7	2,730.8	0.00	0.00	
7,300.0	24.45	304.31	6,712.0	1,562.6	-2,289.9	2,772.2	0.00	0.00	
7,400.0	24.45	304.31	6,803.1	1,586.0	-2,324.0	2,813.6	0.00	0.00	
7,500.0	24.45	304.31	6,894.1	1,609.3	-2,358.2	2,855.0	0.00	0.00	
7,600.0	24.45	304.31	6,985.1	1,632.6	-2,392.4	2,896.4	0.00	0.00	
7,700.0	24.45	304.31	7,076.2	1,656.0	-2,426.6	2,937.7	0.00	0.00	
7,800.0	24.45	304.31	7,167.2	1,679.3	-2,460.8	2,979.1	0.00	0.00	
7,900.0	24.45	304.31	7,258.3	1,702.6	-2,495.0	3,020.5	0.00	0.00	
8,000.0	24.45	304.31	7,349.3	1,725.9	-2,529.1	3,061.9	0.00	0.00	
8,100.0	24.45	304.31	7,440.3	1,749.3	-2,563.3	3,103.3	0.00	0.00	
8,116.8	24.45	304.31	7,455.6	1,753.2	-2,569.1	3,110.2	0.00	0.00	Start Drop -3.00
8,200.0	21.95	304.31	7,532.1	1,771.7	-2,596.1	3,143.0	3.00	-3.00	
8,300.0	18.95	304.31	7,625.8	1,791.4	-2,625.0	3,177.9	3.00	-3.00	
8,400.0	15.95	304.31	7,721.2	1,808.3	-2,649.8	3,207.9	3.00	-3.00	
8,500.0	12.95	304.31	7,818.0	1,822.3	-2,670.4	3,232.9	3.00	-3.00	
8,600.0	9.95	304.31	7,916.0	1,833.5	-2,686.8	3,252.7	3.00	-3.00	
8,700.0	6.95	304.31	8,014.9	1,841.8	-2,698.9	3,267.4	3.00	-3.00	
8,800.0	3.95	304.31	8,114.4	1,847.1	-2,706.8	3,276.9	3.00	-3.00	
8,891.7	1.20	304.31	8,206.0	1,849.5	-2,710.2	3,281.0	3.00	-3.00	WILLIAMS_FORK
8,900.0	0.95	304.31	8,214.3	1,849.6	-2,710.3	3,281.2	3.00	-3.00	
8,931.7	0.00	0.00	8,246.0	1,849.7	-2,710.5	3,281.4	3.00	-3.00	EOD; Inc=0° - TOG - 8507C-23 L24 496 TOG
9,000.0	0.17	239.43	8,314.3	1,849.6	-2,710.6	3,281.5	0.25	0.25	
9,049.8	0.30	239.43	8,364.1	1,849.5	-2,710.8	3,281.6	0.25	0.25	
9,100.0	0.30	239.43	8,414.3	1,849.4	-2,711.0	3,281.7	0.00	0.00	
9,200.0	0.30	239.43	8,514.3	1,849.2	-2,711.4	3,281.9	0.00	0.00	
9,300.0	0.30	239.43	8,614.3	1,848.9	-2,711.9	3,282.1	0.00	0.00	
9,400.0	0.30	239.43	8,714.3	1,848.6	-2,712.3	3,282.4	0.00	0.00	
9,500.0	0.30	239.43	8,814.3	1,848.4	-2,712.8	3,282.6	0.00	0.00	

Cathedral Energy Services

Planning Report

Database:	EDM 5000.1 US Multi Users DB	Local Co-ordinate Reference:	Well 8507C-23 L24 496
Company:	EnCana Oil & Gas (USA) Inc	TVD Reference:	KBE @ 8208.0ft (Original Well Elev)
Project:	Story Gulch	MD Reference:	KBE @ 8208.0ft (Original Well Elev)
Site:	L24 496	North Reference:	True
Well:	8507C-23 L24 496	Survey Calculation Method:	Minimum Curvature
Wellbore:	DD		
Design:	Plan #1		

Planned Survey

Measured Depth (ft)	Inclination (°)	Azimuth (°)	Vertical Depth (ft)	+N/-S (ft)	+E/-W (ft)	Vertical Section (ft)	Dogleg Rate (°/100ft)	Build Rate (°/100ft)	Comments / Formations
9,600.0	0.30	239.43	8,914.3	1,848.1	-2,713.2	3,282.8	0.00	0.00	
9,700.0	0.30	239.43	9,014.3	1,847.8	-2,713.6	3,283.0	0.00	0.00	
9,800.0	0.30	239.43	9,114.3	1,847.6	-2,714.1	3,283.2	0.00	0.00	
9,900.0	0.30	239.43	9,214.3	1,847.3	-2,714.5	3,283.5	0.00	0.00	
10,000.0	0.30	239.43	9,314.3	1,847.1	-2,715.0	3,283.7	0.00	0.00	
10,100.0	0.30	239.43	9,414.3	1,846.8	-2,715.4	3,283.9	0.00	0.00	
10,200.0	0.30	239.43	9,514.3	1,846.5	-2,715.9	3,284.1	0.00	0.00	
10,300.0	0.30	239.43	9,614.3	1,846.3	-2,716.3	3,284.3	0.00	0.00	
10,400.0	0.30	239.43	9,714.3	1,846.0	-2,716.8	3,284.6	0.00	0.00	
10,500.0	0.30	239.43	9,814.3	1,845.7	-2,717.2	3,284.8	0.00	0.00	
10,600.0	0.30	239.43	9,914.3	1,845.5	-2,717.6	3,285.0	0.00	0.00	
10,700.0	0.30	239.43	10,014.3	1,845.2	-2,718.1	3,285.2	0.00	0.00	
10,800.0	0.30	239.43	10,114.3	1,845.0	-2,718.5	3,285.4	0.00	0.00	
10,900.0	0.30	239.43	10,214.3	1,844.7	-2,719.0	3,285.7	0.00	0.00	
11,000.0	0.30	239.43	10,314.3	1,844.4	-2,719.4	3,285.9	0.00	0.00	
11,100.0	0.30	239.43	10,414.3	1,844.2	-2,719.9	3,286.1	0.00	0.00	
11,200.0	0.30	239.43	10,514.3	1,843.9	-2,720.3	3,286.3	0.00	0.00	
11,300.0	0.30	239.43	10,614.3	1,843.6	-2,720.7	3,286.6	0.00	0.00	
11,400.0	0.30	239.43	10,714.3	1,843.4	-2,721.2	3,286.8	0.00	0.00	
11,500.0	0.30	239.43	10,814.3	1,843.1	-2,721.6	3,287.0	0.00	0.00	
11,600.0	0.30	239.43	10,914.3	1,842.9	-2,722.1	3,287.2	0.00	0.00	
11,700.0	0.30	239.43	11,014.3	1,842.6	-2,722.5	3,287.4	0.00	0.00	
11,800.0	0.30	239.43	11,114.3	1,842.3	-2,723.0	3,287.7	0.00	0.00	
11,900.0	0.30	239.43	11,214.3	1,842.1	-2,723.4	3,287.9	0.00	0.00	
12,000.0	0.30	239.43	11,314.3	1,841.8	-2,723.8	3,288.1	0.00	0.00	
12,100.0	0.30	239.43	11,414.3	1,841.6	-2,724.3	3,288.3	0.00	0.00	
12,200.0	0.30	239.43	11,514.3	1,841.3	-2,724.7	3,288.5	0.00	0.00	
12,300.0	0.30	239.43	11,614.3	1,841.0	-2,725.2	3,288.8	0.00	0.00	
12,400.0	0.30	239.43	11,714.3	1,840.8	-2,725.6	3,289.0	0.00	0.00	
12,500.0	0.30	239.43	11,814.3	1,840.5	-2,726.1	3,289.2	0.00	0.00	
12,600.0	0.30	239.43	11,914.3	1,840.2	-2,726.5	3,289.4	0.00	0.00	
12,700.0	0.30	239.43	12,014.3	1,840.0	-2,727.0	3,289.7	0.00	0.00	
12,800.0	0.30	239.43	12,114.3	1,839.7	-2,727.4	3,289.9	0.00	0.00	
12,812.7	0.30	239.43	12,127.0	1,839.7	-2,727.5	3,289.9	0.00	0.00	ROLLINS - 8507C-23 L24 496 BHL
12,900.0	0.30	239.43	12,214.3	1,839.5	-2,727.8	3,290.1	0.00	0.00	
12,912.7	0.30	239.43	12,227.0	1,839.4	-2,727.9	3,290.1	0.00	0.00	Drillers TD @ 12912.7' MD
12,971.7	0.30	239.43	12,286.0	1,839.3	-2,728.2	3,290.3	0.00	0.00	COZZETTE
13,000.0	0.30	239.43	12,314.3	1,839.2	-2,728.3	3,290.3	0.00	0.00	
13,100.0	0.30	239.43	12,414.3	1,838.9	-2,728.7	3,290.5	0.00	0.00	
13,200.0	0.30	239.43	12,514.3	1,838.7	-2,729.2	3,290.8	0.00	0.00	
13,260.7	0.30	239.43	12,575.0	1,838.5	-2,729.4	3,290.9	0.00	0.00	CORCORAN
13,300.0	0.30	239.43	12,614.3	1,838.4	-2,729.6	3,291.0	0.00	0.00	
13,378.7	0.30	239.43	12,693.0	1,838.2	-2,730.0	3,291.2	0.00	0.00	LOWER_SEGO
13,400.0	0.30	239.43	12,714.3	1,838.1	-2,730.1	3,291.2	0.00	0.00	
13,472.7	0.30	239.43	12,787.0	1,838.0	-2,730.4	3,291.4	0.00	0.00	SEGO
13,500.0	0.30	239.43	12,814.3	1,837.9	-2,730.5	3,291.4	0.00	0.00	
13,600.0	0.30	239.43	12,914.3	1,837.6	-2,730.9	3,291.6	0.00	0.00	
13,700.0	0.30	239.43	13,014.3	1,837.4	-2,731.4	3,291.9	0.00	0.00	
13,800.0	0.30	239.43	13,114.2	1,837.1	-2,731.8	3,292.1	0.00	0.00	
13,900.0	0.30	239.43	13,214.2	1,836.8	-2,732.3	3,292.3	0.00	0.00	
13,912.8	0.30	239.43	13,227.0	1,836.8	-2,732.3	3,292.3	0.00	0.00	

Cathedral Energy Services

Planning Report

Database:	EDM 5000.1 US Multi Users DB	Local Co-ordinate Reference:	Well 8507C-23 L24 496
Company:	EnCana Oil & Gas (USA) Inc	TVD Reference:	KBE @ 8208.0ft (Original Well Elev)
Project:	Story Gulch	MD Reference:	KBE @ 8208.0ft (Original Well Elev)
Site:	L24 496	North Reference:	True
Well:	8507C-23 L24 496	Survey Calculation Method:	Minimum Curvature
Wellbore:	DD		
Design:	Plan #1		

Targets									
Target Name									
- hit/miss target	Dip Angle	Dip Dir.	TVD	+N/-S	+E/-W	Northing	Easting	Latitude	Longitude
- Shape	(°)	(°)	(ft)	(ft)	(ft)	(ft)	(ft)		
8507C-23 L24 496 TOG	0.00	0.00	8,246.0	1,849.7	-2,710.5	1,687,001.54	2,259,159.65	39° 41' 24.50 N	108° 7' 58.34 W
- plan hits target center									
- Point									
8507C-23 L24 496 BHL	0.00	0.00	12,127.0	1,839.7	-2,727.5	1,686,992.02	2,259,142.42	39° 41' 24.40 N	108° 7' 58.56 W
- plan hits target center									
- Rectangle (sides W30.0 H50.0 D0.0)									

Formations						
Measured Depth	Vertical Depth	Name	Lithology	Dip	Dip Direction	
(ft)	(ft)			(°)	(°)	
1,350.6	1,296.0	A_GROOVE				
2,668.8	2,496.0	GARDEN_GULCH / L-1				
6,363.0	5,859.0	WASATCH_G				
8,891.7	8,206.0	WILLIAMS_FORK				
8,931.7	8,246.0	TOG				
12,812.7	12,127.0	ROLLINS				
12,971.7	12,286.0	COZZETTE				
13,260.7	12,575.0	CORCORAN				
13,378.7	12,693.0	LOWER_SEGO				
13,472.7	12,787.0	SEGO				

Plan Annotations				
Measured Depth	Vertical Depth	Local Coordinates		Comment
(ft)	(ft)	+N/-S (ft)	+E/-W (ft)	
200.0	200.0	0.0	0.0	KOP @ 200' MD
1,014.9	990.4	96.5	-141.4	EOB; Inc=24.45°
8,116.8	7,455.6	1,753.2	-2,569.1	Start Drop -3.00
8,931.7	8,246.0	1,849.7	-2,710.5	EOD; Inc=0°
12,912.7	12,227.0	1,839.4	-2,727.9	Drillers TD @ 12912.7' MD
13,912.8	13,227.0	1,836.8	-2,732.3	Permit TD @ 13912.8' MD