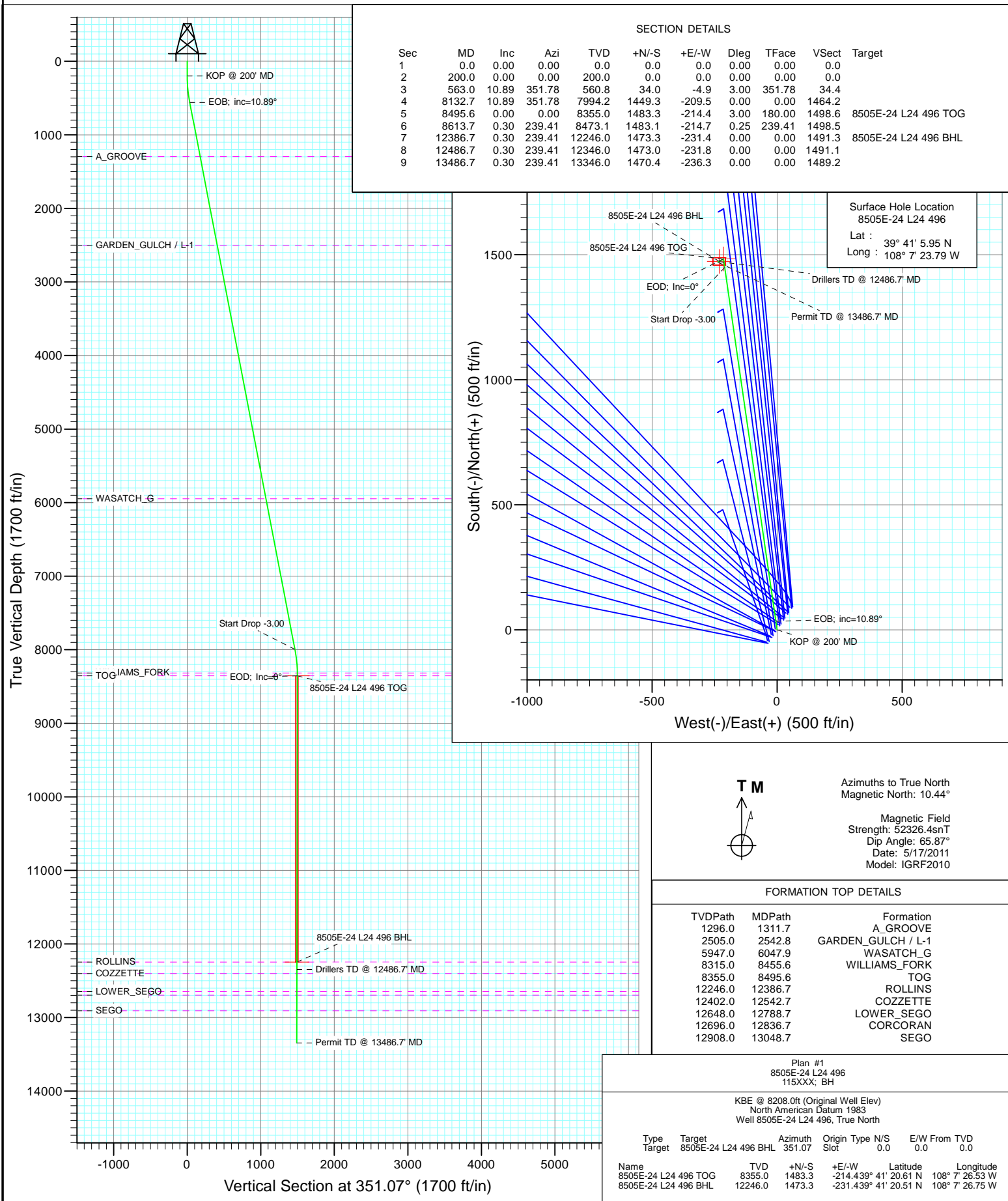


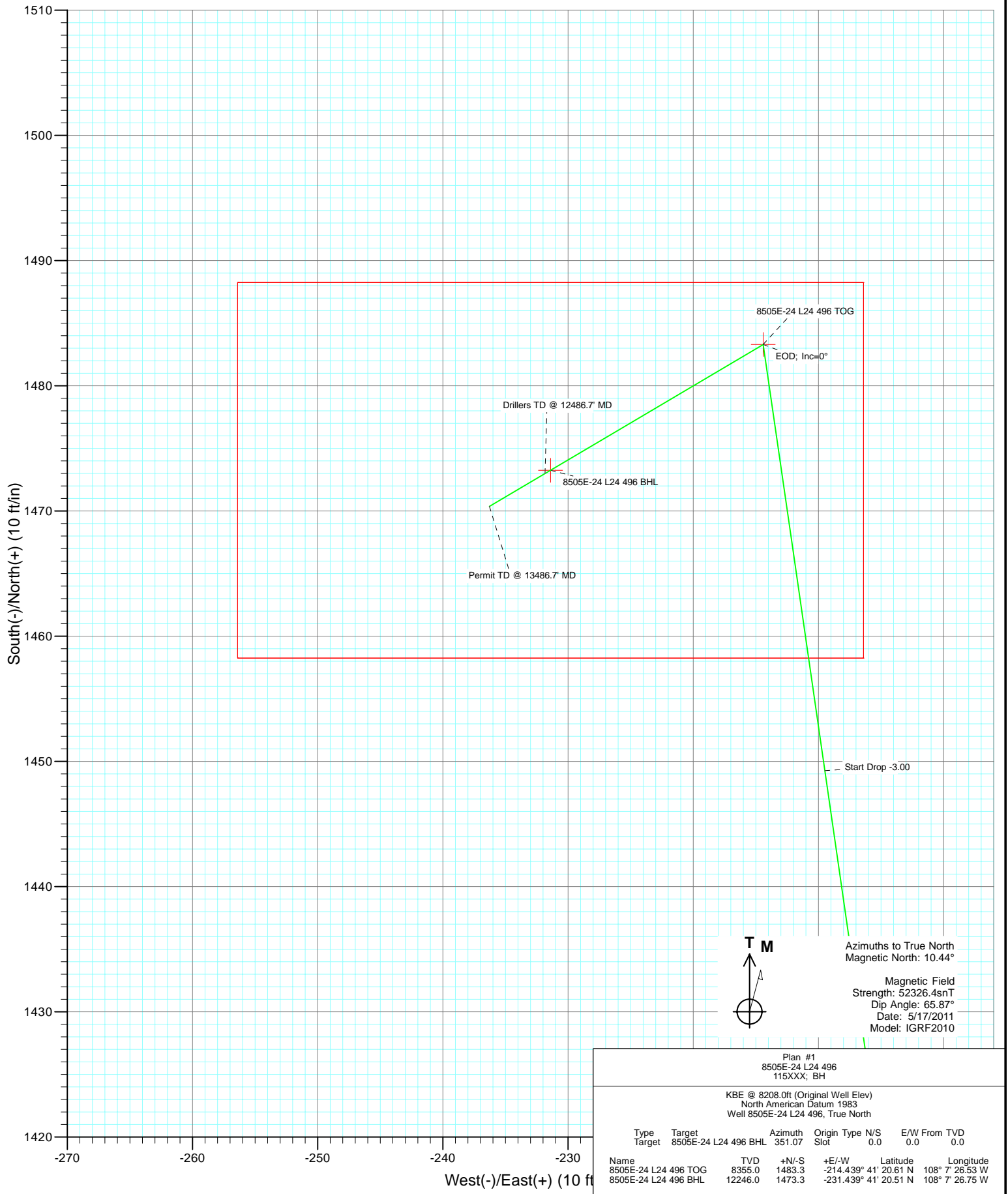


Project: Story Gulch  
Site: L24 496  
Well: 8505E-24 L24 496  
Wellbore: DD  
Design: Plan #1





Project: Story Gulch  
 Site: L24 496  
 Well: 8505E-24 L24 496  
 Wellbore: DD  
 Design: Plan #1



Plan #1 8505E-24 L24 496 115XXX; BH							
KBE @ 8208.0ft (Original Well Elev) North American Datum 1983 Well 8505E-24 L24 496, True North							
Type	Target	Target	Azimuth	Origin	Type	N/S	E/W From
Target	8505E-24 L24 496 BHL		351.07	Slot		0.0	0.0
	TVD	+N/-S		+E/-W	Latitude		Longitude
8505E-24 L24 496 TOG	8355.0	1483.3		-214.439° 41'	20.61 N	108° 7'	26.53 W
8505E-24 L24 496 BHL	12246.0	1473.3		-231.439° 41'	20.51 N	108° 7'	26.75 W

# Cathedral Energy Services

## Planning Report

<b>Database:</b>	EDM 5000.1 US Multi Users DB	<b>Local Co-ordinate Reference:</b>	Well 8505E-24 L24 496
<b>Company:</b>	EnCana Oil & Gas (USA) Inc	<b>TVD Reference:</b>	KBE @ 8208.0ft (Original Well Elev)
<b>Project:</b>	Story Gulch	<b>MD Reference:</b>	KBE @ 8208.0ft (Original Well Elev)
<b>Site:</b>	L24 496	<b>North Reference:</b>	True
<b>Well:</b>	8505E-24 L24 496	<b>Survey Calculation Method:</b>	Minimum Curvature
<b>Wellbore:</b>	DD		
<b>Design:</b>	Plan #1		

<b>Project</b>	Story Gulch		
<b>Map System:</b>	US State Plane 1983	<b>System Datum:</b>	Mean Sea Level
<b>Geo Datum:</b>	North American Datum 1983		
<b>Map Zone:</b>	Colorado Central Zone		

Site		L24 496			
Site Position:		Northing:	1,685,024.52 ft	Latitude:	39° 41' 5.72 N
From:	Lat/Long	Easting:	2,261,789.15 ft	Longitude:	108° 7' 23.99 W
Position Uncertainty:	0.0 ft	Slot Radius:	13.200 in	Grid Convergence:	-1.65 °

Well	8505E-24 L24 496					
Well Position	+N/-S	0.0 ft	Northing:	1,685,047.32 ft	Latitude:	39° 41' 5.95 N
	+E/-W	0.0 ft	Easting:	2,261,805.45 ft	Longitude:	108° 7' 23.79 W
Position Uncertainty		0.0 ft	Wellhead Elevation:	ft	Ground Level:	8,193.0 ft

<b>Wellbore</b>	DD				
<b>Magnetics</b>	<b>Model Name</b>	<b>Sample Date</b>	<b>Declination (°)</b>	<b>Dip Angle (°)</b>	<b>Field Strength (nT)</b>
	IGRF2010	5/17/2011	10.44	65.87	52,326

<b>Design</b>	Plan #1			
<b>Audit Notes:</b>				
<b>Version:</b>	<b>Phase:</b>	PLAN	<b>Tie On Depth:</b>	0.0
<b>Vertical Section:</b>	<b>Depth From (TVD) (ft)</b>	<b>+N/-S (ft)</b>	<b>+E/-W (ft)</b>	<b>Direction (°)</b>
	0.0	0.0	0.0	351.07

<b>Plan Sections</b>										
Measured Depth (ft)	Inclination (°)	Azimuth (°)	Vertical Depth (ft)	+N/-S (ft)	+E/-W (ft)	Dogleg Rate (°/100ft)	Build Rate (°/100ft)	Turn Rate (°/100ft)	TFO (°)	Target
0.0	0.00	0.00	0.0	0.0	0.0	0.00	0.00	0.00	0.00	
200.0	0.00	0.00	200.0	0.0	0.0	0.00	0.00	0.00	0.00	
563.0	10.89	351.78	560.8	34.0	-4.9	3.00	3.00	0.00	351.78	
8,132.7	10.89	351.78	7,994.2	1,449.3	-209.5	0.00	0.00	0.00	0.00	
8,495.6	0.00	0.00	8,355.0	1,483.3	-214.4	3.00	-3.00	0.00	180.00	8505E-24 L24 496 TC
8,613.7	0.30	239.41	8,473.1	1,483.1	-214.7	0.25	0.25	-102.13	239.41	
12,386.7	0.30	239.41	12,246.0	1,473.3	-231.4	0.00	0.00	0.00	0.00	8505E-24 L24 496 B+
12,486.7	0.30	239.41	12,346.0	1,473.0	-231.8	0.00	0.00	0.00	0.00	
13,486.7	0.30	239.41	13,346.0	1,470.4	-236.3	0.00	0.00	0.00	0.00	

# Cathedral Energy Services

## Planning Report

<b>Database:</b>	EDM 5000.1 US Multi Users DB	<b>Local Co-ordinate Reference:</b>	Well 8505E-24 L24 496
<b>Company:</b>	EnCana Oil & Gas (USA) Inc	<b>TVD Reference:</b>	KBE @ 8208.0ft (Original Well Elev)
<b>Project:</b>	Story Gulch	<b>MD Reference:</b>	KBE @ 8208.0ft (Original Well Elev)
<b>Site:</b>	L24 496	<b>North Reference:</b>	True
<b>Well:</b>	8505E-24 L24 496	<b>Survey Calculation Method:</b>	Minimum Curvature
<b>Wellbore:</b>	DD		
<b>Design:</b>	Plan #1		

### Planned Survey

Measured Depth (ft)	Inclination (°)	Azimuth (°)	Vertical Depth (ft)	+N/-S (ft)	+E/-W (ft)	Vertical Section (ft)	Dogleg Rate (°/100ft)	Build Rate (°/100ft)	Comments / Formations
0.0	0.00	0.00	0.0	0.0	0.0	0.0	0.00	0.00	
100.0	0.00	0.00	100.0	0.0	0.0	0.0	0.00	0.00	
200.0	0.00	0.00	200.0	0.0	0.0	0.0	0.00	0.00	KOP @ 200' MD
300.0	3.00	351.78	300.0	2.6	-0.4	2.6	3.00	3.00	
400.0	6.00	351.78	399.6	10.4	-1.5	10.5	3.00	3.00	
500.0	9.00	351.78	498.8	23.3	-3.4	23.5	3.00	3.00	
563.0	10.89	351.78	560.8	34.0	-4.9	34.4	3.00	3.00	EOB; inc=10.89°
600.0	10.89	351.78	597.2	41.0	-5.9	41.4	0.00	0.00	
700.0	10.89	351.78	695.4	59.7	-8.6	60.3	0.00	0.00	
800.0	10.89	351.78	793.6	78.3	-11.3	79.2	0.00	0.00	
900.0	10.89	351.78	891.8	97.0	-14.0	98.0	0.00	0.00	
1,000.0	10.89	351.78	990.0	115.7	-16.7	116.9	0.00	0.00	
1,100.0	10.89	351.78	1,088.2	134.4	-19.4	135.8	0.00	0.00	
1,200.0	10.89	351.78	1,186.3	153.1	-22.1	154.7	0.00	0.00	
1,300.0	10.89	351.78	1,284.5	171.8	-24.8	173.6	0.00	0.00	
1,311.7	10.89	351.78	1,296.0	174.0	-25.2	175.8	0.00	0.00	A_GROOVE
1,400.0	10.89	351.78	1,382.7	190.5	-27.5	192.5	0.00	0.00	
1,500.0	10.89	351.78	1,480.9	209.2	-30.2	211.4	0.00	0.00	
1,600.0	10.89	351.78	1,579.1	227.9	-32.9	230.3	0.00	0.00	
1,700.0	10.89	351.78	1,677.3	246.6	-35.6	249.2	0.00	0.00	
1,800.0	10.89	351.78	1,775.5	265.3	-38.3	268.0	0.00	0.00	
1,900.0	10.89	351.78	1,873.7	284.0	-41.1	286.9	0.00	0.00	
2,000.0	10.89	351.78	1,971.9	302.7	-43.8	305.8	0.00	0.00	
2,100.0	10.89	351.78	2,070.1	321.4	-46.5	324.7	0.00	0.00	
2,200.0	10.89	351.78	2,168.3	340.1	-49.2	343.6	0.00	0.00	
2,300.0	10.89	351.78	2,266.5	358.8	-51.9	362.5	0.00	0.00	
2,400.0	10.89	351.78	2,364.7	377.5	-54.6	381.4	0.00	0.00	
2,500.0	10.89	351.78	2,462.9	396.2	-57.3	400.3	0.00	0.00	
2,542.8	10.89	351.78	2,505.0	404.2	-58.4	408.4	0.00	0.00	GARDEN_GULCH / L-1
2,600.0	10.89	351.78	2,561.1	414.9	-60.0	419.2	0.00	0.00	
2,700.0	10.89	351.78	2,659.3	433.6	-62.7	438.0	0.00	0.00	
2,800.0	10.89	351.78	2,757.5	452.3	-65.4	456.9	0.00	0.00	
2,900.0	10.89	351.78	2,855.7	471.0	-68.1	475.8	0.00	0.00	
3,000.0	10.89	351.78	2,953.9	489.7	-70.8	494.7	0.00	0.00	
3,100.0	10.89	351.78	3,052.1	508.4	-73.5	513.6	0.00	0.00	
3,200.0	10.89	351.78	3,150.3	527.1	-76.2	532.5	0.00	0.00	
3,300.0	10.89	351.78	3,248.5	545.7	-78.9	551.4	0.00	0.00	
3,400.0	10.89	351.78	3,346.7	564.4	-81.6	570.3	0.00	0.00	
3,500.0	10.89	351.78	3,444.9	583.1	-84.3	589.2	0.00	0.00	
3,600.0	10.89	351.78	3,543.1	601.8	-87.0	608.0	0.00	0.00	
3,700.0	10.89	351.78	3,641.3	620.5	-89.7	626.9	0.00	0.00	
3,800.0	10.89	351.78	3,739.5	639.2	-92.4	645.8	0.00	0.00	
3,900.0	10.89	351.78	3,837.7	657.9	-95.1	664.7	0.00	0.00	
4,000.0	10.89	351.78	3,935.9	676.6	-97.8	683.6	0.00	0.00	
4,100.0	10.89	351.78	4,034.1	695.3	-100.5	702.5	0.00	0.00	
4,200.0	10.89	351.78	4,132.3	714.0	-103.2	721.4	0.00	0.00	
4,300.0	10.89	351.78	4,230.5	732.7	-105.9	740.3	0.00	0.00	
4,400.0	10.89	351.78	4,328.7	751.4	-108.6	759.2	0.00	0.00	
4,500.0	10.89	351.78	4,426.9	770.1	-111.3	778.0	0.00	0.00	
4,600.0	10.89	351.78	4,525.1	788.8	-114.0	796.9	0.00	0.00	
4,700.0	10.89	351.78	4,623.3	807.5	-116.7	815.8	0.00	0.00	
4,800.0	10.89	351.78	4,721.5	826.2	-119.4	834.7	0.00	0.00	

# Cathedral Energy Services

## Planning Report

<b>Database:</b>	EDM 5000.1 US Multi Users DB	<b>Local Co-ordinate Reference:</b>	Well 8505E-24 L24 496
<b>Company:</b>	EnCana Oil & Gas (USA) Inc	<b>TVD Reference:</b>	KBE @ 8208.0ft (Original Well Elev)
<b>Project:</b>	Story Gulch	<b>MD Reference:</b>	KBE @ 8208.0ft (Original Well Elev)
<b>Site:</b>	L24 496	<b>North Reference:</b>	True
<b>Well:</b>	8505E-24 L24 496	<b>Survey Calculation Method:</b>	Minimum Curvature
<b>Wellbore:</b>	DD		
<b>Design:</b>	Plan #1		

Planned Survey									
Measured Depth (ft)	Inclination (°)	Azimuth (°)	Vertical Depth (ft)	+N/-S (ft)	+E/-W (ft)	Vertical Section (ft)	Dogleg Rate (°/100ft)	Build Rate (°/100ft)	Comments / Formations
4,900.0	10.89	351.78	4,819.7	844.9	-122.1	853.6	0.00	0.00	
5,000.0	10.89	351.78	4,917.9	863.6	-124.8	872.5	0.00	0.00	
5,100.0	10.89	351.78	5,016.1	882.3	-127.5	891.4	0.00	0.00	
5,200.0	10.89	351.78	5,114.3	901.0	-130.2	910.3	0.00	0.00	
5,300.0	10.89	351.78	5,212.5	919.7	-132.9	929.2	0.00	0.00	
5,400.0	10.89	351.78	5,310.7	938.4	-135.6	948.0	0.00	0.00	
5,500.0	10.89	351.78	5,408.9	957.1	-138.3	966.9	0.00	0.00	
5,600.0	10.89	351.78	5,507.1	975.8	-141.0	985.8	0.00	0.00	
5,700.0	10.89	351.78	5,605.3	994.5	-143.7	1,004.7	0.00	0.00	
5,800.0	10.89	351.78	5,703.5	1,013.1	-146.4	1,023.6	0.00	0.00	
5,900.0	10.89	351.78	5,801.7	1,031.8	-149.1	1,042.5	0.00	0.00	
6,000.0	10.89	351.78	5,899.9	1,050.5	-151.8	1,061.4	0.00	0.00	
6,047.9	10.89	351.78	5,947.0	1,059.5	-153.1	1,070.4	0.00	0.00	WASATCH_G
6,100.0	10.89	351.78	5,998.1	1,069.2	-154.6	1,080.3	0.00	0.00	
6,200.0	10.89	351.78	6,096.3	1,087.9	-157.3	1,099.2	0.00	0.00	
6,300.0	10.89	351.78	6,194.5	1,106.6	-160.0	1,118.0	0.00	0.00	
6,400.0	10.89	351.78	6,292.7	1,125.3	-162.7	1,136.9	0.00	0.00	
6,500.0	10.89	351.78	6,390.9	1,144.0	-165.4	1,155.8	0.00	0.00	
6,600.0	10.89	351.78	6,489.1	1,162.7	-168.1	1,174.7	0.00	0.00	
6,700.0	10.89	351.78	6,587.3	1,181.4	-170.8	1,193.6	0.00	0.00	
6,800.0	10.89	351.78	6,685.5	1,200.1	-173.5	1,212.5	0.00	0.00	
6,900.0	10.89	351.78	6,783.7	1,218.8	-176.2	1,231.4	0.00	0.00	
7,000.0	10.89	351.78	6,881.9	1,237.5	-178.9	1,250.3	0.00	0.00	
7,100.0	10.89	351.78	6,980.1	1,256.2	-181.6	1,269.2	0.00	0.00	
7,200.0	10.89	351.78	7,078.3	1,274.9	-184.3	1,288.0	0.00	0.00	
7,300.0	10.89	351.78	7,176.5	1,293.6	-187.0	1,306.9	0.00	0.00	
7,400.0	10.89	351.78	7,274.7	1,312.3	-189.7	1,325.8	0.00	0.00	
7,500.0	10.89	351.78	7,372.9	1,331.0	-192.4	1,344.7	0.00	0.00	
7,600.0	10.89	351.78	7,471.1	1,349.7	-195.1	1,363.6	0.00	0.00	
7,700.0	10.89	351.78	7,569.3	1,368.4	-197.8	1,382.5	0.00	0.00	
7,800.0	10.89	351.78	7,667.5	1,387.1	-200.5	1,401.4	0.00	0.00	
7,900.0	10.89	351.78	7,765.7	1,405.8	-203.2	1,420.3	0.00	0.00	
8,000.0	10.89	351.78	7,863.9	1,424.5	-205.9	1,439.2	0.00	0.00	
8,100.0	10.89	351.78	7,962.1	1,443.2	-208.6	1,458.0	0.00	0.00	
8,132.7	10.89	351.78	7,994.2	1,449.3	-209.5	1,464.2	0.00	0.00	Start Drop -3.00
8,200.0	8.87	351.78	8,060.5	1,460.7	-211.1	1,475.8	3.00	-3.00	
8,300.0	5.87	351.78	8,159.7	1,473.4	-213.0	1,488.6	3.00	-3.00	
8,400.0	2.87	351.78	8,259.4	1,480.9	-214.1	1,496.2	3.00	-3.00	
8,455.6	1.20	351.78	8,315.0	1,482.9	-214.3	1,498.2	3.00	-3.00	WILLIAMS_FORK
8,495.6	0.00	0.00	8,355.0	1,483.3	-214.4	1,498.6	3.00	-3.00	EOD; Inc=0° - TOG - 8505E-24 L24 496 TOG
8,500.0	0.01	239.41	8,359.4	1,483.3	-214.4	1,498.6	0.25	0.25	
8,600.0	0.26	239.41	8,459.4	1,483.2	-214.6	1,498.5	0.25	0.25	
8,613.7	0.30	239.41	8,473.1	1,483.1	-214.7	1,498.5	0.25	0.25	
8,700.0	0.30	239.41	8,559.3	1,482.9	-215.0	1,498.3	0.00	0.00	
8,800.0	0.30	239.41	8,659.3	1,482.7	-215.5	1,498.1	0.00	0.00	
8,900.0	0.30	239.41	8,759.3	1,482.4	-215.9	1,497.9	0.00	0.00	
9,000.0	0.30	239.41	8,859.3	1,482.1	-216.4	1,497.8	0.00	0.00	
9,100.0	0.30	239.41	8,959.3	1,481.9	-216.8	1,497.6	0.00	0.00	
9,200.0	0.30	239.41	9,059.3	1,481.6	-217.3	1,497.4	0.00	0.00	
9,300.0	0.30	239.41	9,159.3	1,481.3	-217.7	1,497.2	0.00	0.00	
9,400.0	0.30	239.41	9,259.3	1,481.1	-218.1	1,497.0	0.00	0.00	
9,500.0	0.30	239.41	9,359.3	1,480.8	-218.6	1,496.8	0.00	0.00	

# Cathedral Energy Services

## Planning Report

<b>Database:</b>	EDM 5000.1 US Multi Users DB	<b>Local Co-ordinate Reference:</b>	Well 8505E-24 L24 496
<b>Company:</b>	EnCana Oil & Gas (USA) Inc	<b>TVD Reference:</b>	KBE @ 8208.0ft (Original Well Elev)
<b>Project:</b>	Story Gulch	<b>MD Reference:</b>	KBE @ 8208.0ft (Original Well Elev)
<b>Site:</b>	L24 496	<b>North Reference:</b>	True
<b>Well:</b>	8505E-24 L24 496	<b>Survey Calculation Method:</b>	Minimum Curvature
<b>Wellbore:</b>	DD		
<b>Design:</b>	Plan #1		

Planned Survey									
Measured Depth (ft)	Inclination (°)	Azimuth (°)	Vertical Depth (ft)	+N/-S (ft)	+E/-W (ft)	Vertical Section (ft)	Dogleg Rate (°/100ft)	Build Rate (°/100ft)	Comments / Formations
9,600.0	0.30	239.41	9,459.3	1,480.6	-219.0	1,496.6	0.00	0.00	
9,700.0	0.30	239.41	9,559.3	1,480.3	-219.5	1,496.4	0.00	0.00	
9,800.0	0.30	239.41	9,659.3	1,480.0	-219.9	1,496.2	0.00	0.00	
9,900.0	0.30	239.41	9,759.3	1,479.8	-220.4	1,496.0	0.00	0.00	
10,000.0	0.30	239.41	9,859.3	1,479.5	-220.8	1,495.9	0.00	0.00	
10,100.0	0.30	239.41	9,959.3	1,479.2	-221.3	1,495.7	0.00	0.00	
10,200.0	0.30	239.41	10,059.3	1,479.0	-221.7	1,495.5	0.00	0.00	
10,300.0	0.30	239.41	10,159.3	1,478.7	-222.1	1,495.3	0.00	0.00	
10,400.0	0.30	239.41	10,259.3	1,478.5	-222.6	1,495.1	0.00	0.00	
10,500.0	0.30	239.41	10,359.3	1,478.2	-223.0	1,494.9	0.00	0.00	
10,600.0	0.30	239.41	10,459.3	1,477.9	-223.5	1,494.7	0.00	0.00	
10,700.0	0.30	239.41	10,559.3	1,477.7	-223.9	1,494.5	0.00	0.00	
10,800.0	0.30	239.41	10,659.3	1,477.4	-224.4	1,494.3	0.00	0.00	
10,900.0	0.30	239.41	10,759.3	1,477.2	-224.8	1,494.1	0.00	0.00	
11,000.0	0.30	239.41	10,859.3	1,476.9	-225.2	1,494.0	0.00	0.00	
11,100.0	0.30	239.41	10,959.3	1,476.6	-225.7	1,493.8	0.00	0.00	
11,200.0	0.30	239.41	11,059.3	1,476.4	-226.1	1,493.6	0.00	0.00	
11,300.0	0.30	239.41	11,159.3	1,476.1	-226.6	1,493.4	0.00	0.00	
11,400.0	0.30	239.41	11,259.3	1,475.8	-227.0	1,493.2	0.00	0.00	
11,500.0	0.30	239.41	11,359.3	1,475.6	-227.5	1,493.0	0.00	0.00	
11,600.0	0.30	239.41	11,459.3	1,475.3	-227.9	1,492.8	0.00	0.00	
11,700.0	0.30	239.41	11,559.3	1,475.1	-228.3	1,492.6	0.00	0.00	
11,800.0	0.30	239.41	11,659.3	1,474.8	-228.8	1,492.4	0.00	0.00	
11,900.0	0.30	239.41	11,759.3	1,474.5	-229.2	1,492.2	0.00	0.00	
12,000.0	0.30	239.41	11,859.3	1,474.3	-229.7	1,492.1	0.00	0.00	
12,100.0	0.30	239.41	11,959.3	1,474.0	-230.1	1,491.9	0.00	0.00	
12,200.0	0.30	239.41	12,059.3	1,473.7	-230.6	1,491.7	0.00	0.00	
12,300.0	0.30	239.41	12,159.3	1,473.5	-231.0	1,491.5	0.00	0.00	
12,386.7	0.30	239.41	12,246.0	1,473.3	-231.4	1,491.3	0.00	0.00	ROLLINS - 8505E-24 L24 496 BHL
12,400.0	0.30	239.41	12,259.3	1,473.2	-231.5	1,491.3	0.00	0.00	
12,486.7	0.30	239.41	12,346.0	1,473.0	-231.8	1,491.1	0.00	0.00	Drillers TD @ 12486.7' MD
12,500.0	0.30	239.41	12,359.3	1,473.0	-231.9	1,491.1	0.00	0.00	
12,542.7	0.30	239.41	12,402.0	1,472.8	-232.1	1,491.0	0.00	0.00	COZZETTE
12,600.0	0.30	239.41	12,459.3	1,472.7	-232.3	1,490.9	0.00	0.00	
12,700.0	0.30	239.41	12,559.3	1,472.4	-232.8	1,490.7	0.00	0.00	
12,788.7	0.30	239.41	12,648.0	1,472.2	-233.2	1,490.6	0.00	0.00	LOWER_SEGO
12,800.0	0.30	239.41	12,659.3	1,472.2	-233.2	1,490.5	0.00	0.00	
12,836.7	0.30	239.41	12,696.0	1,472.1	-233.4	1,490.5	0.00	0.00	CORCORAN
12,900.0	0.30	239.41	12,759.3	1,471.9	-233.7	1,490.3	0.00	0.00	
13,000.0	0.30	239.41	12,859.3	1,471.6	-234.1	1,490.1	0.00	0.00	
13,048.7	0.30	239.41	12,908.0	1,471.5	-234.3	1,490.1	0.00	0.00	SEGO
13,100.0	0.30	239.41	12,959.3	1,471.4	-234.6	1,490.0	0.00	0.00	
13,200.0	0.30	239.41	13,059.3	1,471.1	-235.0	1,489.8	0.00	0.00	
13,300.0	0.30	239.41	13,159.3	1,470.9	-235.4	1,489.6	0.00	0.00	
13,400.0	0.30	239.41	13,259.3	1,470.6	-235.9	1,489.4	0.00	0.00	
13,486.7	0.30	239.41	13,346.0	1,470.4	-236.3	1,489.2	0.00	0.00	Permit TD @ 13486.7' MD

# Cathedral Energy Services

## Planning Report

<b>Database:</b>	EDM 5000.1 US Multi Users DB	<b>Local Co-ordinate Reference:</b>	Well 8505E-24 L24 496
<b>Company:</b>	EnCana Oil & Gas (USA) Inc	<b>TVD Reference:</b>	KBE @ 8208.0ft (Original Well Elev)
<b>Project:</b>	Story Gulch	<b>MD Reference:</b>	KBE @ 8208.0ft (Original Well Elev)
<b>Site:</b>	L24 496	<b>North Reference:</b>	True
<b>Well:</b>	8505E-24 L24 496	<b>Survey Calculation Method:</b>	Minimum Curvature
<b>Wellbore:</b>	DD		
<b>Design:</b>	Plan #1		

Targets									
Target Name									
- hit/miss target	Dip Angle	Dip Dir.	TVD	+N/-S	+E/-W	Northing	Easting	Latitude	Longitude
- Shape	(°)	(°)	(ft)	(ft)	(ft)	(ft)	(ft)		
8505E-24 L24 496 TOG	0.00	0.00	8,355.0	1,483.3	-214.4	1,686,536.19	2,261,633.97	39° 41' 20.61 N	108° 7' 26.53 W
- plan hits target center									
- Point									
8505E-24 L24 496 BHL	0.00	0.00	12,246.0	1,473.3	-231.4	1,686,526.64	2,261,616.69	39° 41' 20.51 N	108° 7' 26.75 W
- plan hits target center									
- Rectangle (sides W30.0 H50.0 D0.0)									

Formations						
Measured Depth	Vertical Depth	Name	Lithology	Dip	Dip Direction	
(ft)	(ft)			(°)	(°)	
1,311.7	1,296.0	A_GROOVE				
2,542.8	2,505.0	GARDEN_GULCH / L-1				
6,047.9	5,947.0	WASATCH_G				
8,455.6	8,315.0	WILLIAMS_FORK				
8,495.6	8,355.0	TOG				
12,386.7	12,246.0	ROLLINS				
12,542.7	12,402.0	COZZETTE				
12,788.7	12,648.0	LOWER_SEGO				
12,836.7	12,696.0	CORCORAN				
13,048.7	12,908.0	SEGO				

Plan Annotations				
Measured Depth	Vertical Depth	Local Coordinates		Comment
(ft)	(ft)	+N/-S (ft)	+E/-W (ft)	
200.0	200.0	0.0	0.0	KOP @ 200' MD
563.0	560.8	34.0	-4.9	EOB; inc=10.89°
8,132.7	7,994.2	1,449.3	-209.5	Start Drop -3.00
8,495.6	8,355.0	1,483.3	-214.4	EOD; Inc=0°
12,486.7	12,346.0	1,473.0	-231.8	Drillers TD @ 12486.7' MD
13,486.7	13,346.0	1,470.4	-236.3	Permit TD @ 13486.7' MD