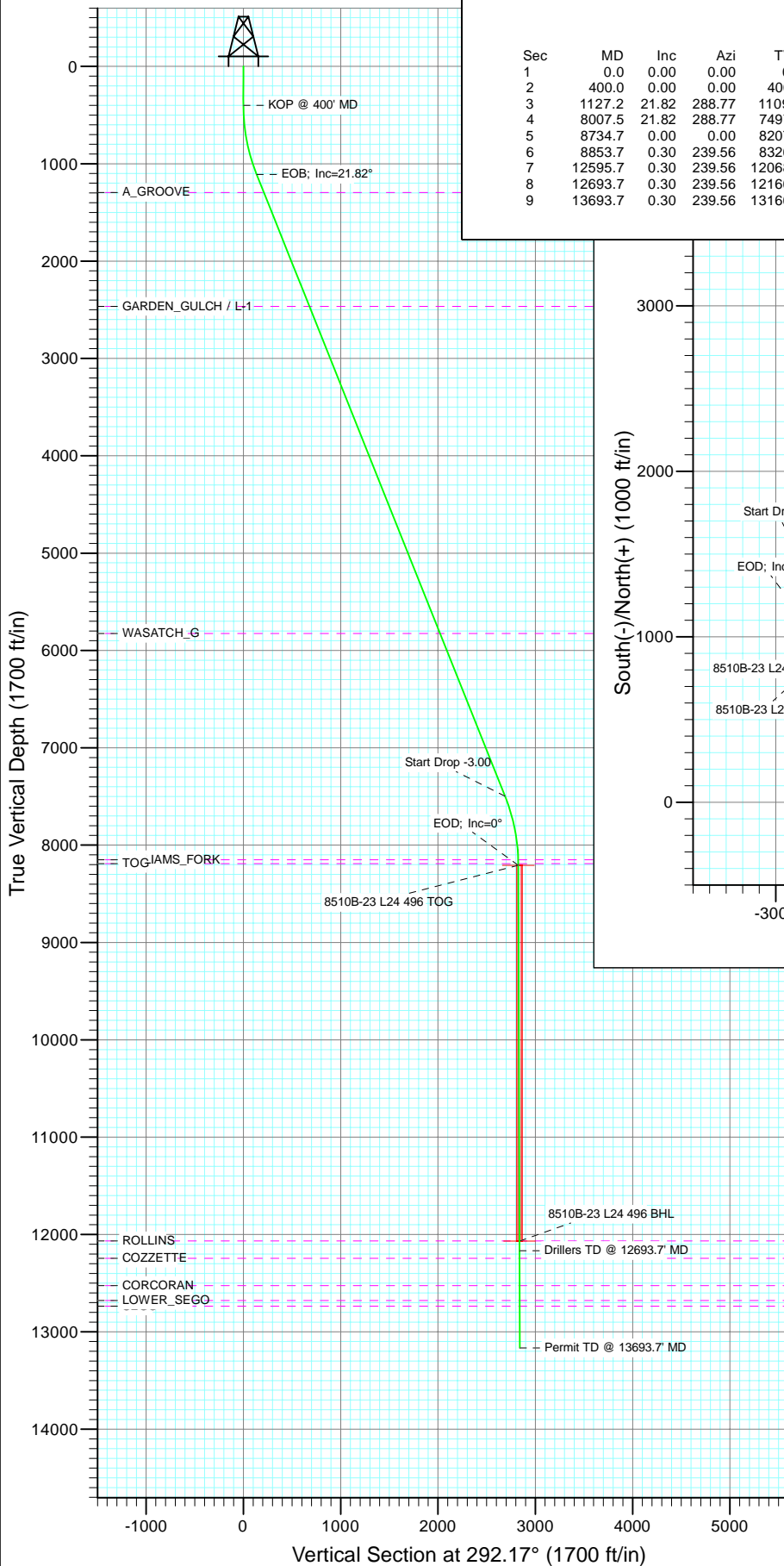
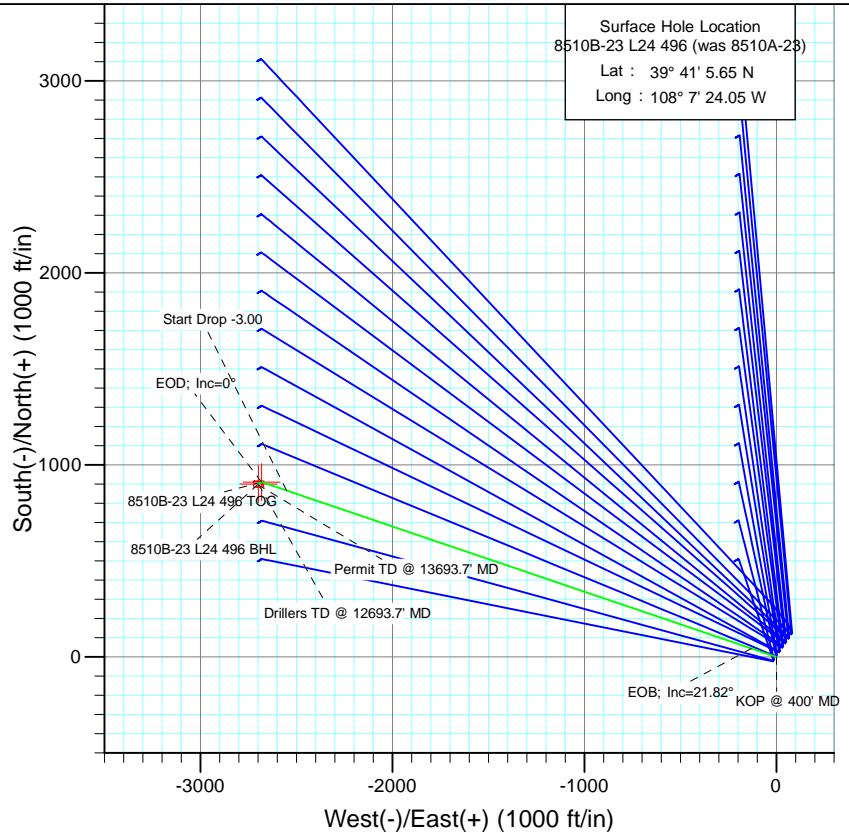




Project: Story Gulch
Site: L24 496
Well: 8510B-23 L24 496 (was 8510A-23)
Wellbore: DD
Design: Plan #2



SECTION DETAILS										
Sec	MD	Inc	Azi	TVD	+N/-S	+E/-W	Dleg	TFace	VSect	Target
1	0.0	0.00	0.00	0.0	0.0	0.0	0.00	0.00	0.0	
2	400.0	0.00	0.00	400.0	0.0	0.0	0.00	0.00	0.0	
3	1127.2	21.82	288.77	1109.8	44.0	-129.5	3.00	288.77	136.6	
4	8007.5	21.82	288.77	7497.2	866.7	-2550.5	0.00	0.00	2689.0	
5	8734.7	0.00	0.00	8207.0	910.7	-2680.1	3.00	180.00	2825.6	8510B-23 L24 496 TOG
6	8853.7	0.30	239.56	8326.0	910.5	-2680.3	0.25	239.56	2825.8	
7	12595.7	0.30	239.56	12068.0	900.7	-2697.1	0.00	0.00	2837.6	8510B-23 L24 496 BHL
8	12693.7	0.30	239.56	12166.0	900.4	-2697.5	0.00	0.00	2837.9	
9	13693.7	0.30	239.56	13166.0	897.8	-2702.0	0.00	0.00	2841.0	



Azimuths to True North
Magnetic North: 10.44°
Magnetic Field
Strength: 52326.4snT
Dip Angle: 65.87°
Date: 5/17/2011
Model: IGRF2010

FORMATION TOP DETAILS

TVDPath	MDPath	Formation
1295.0	1326.7	A_GROOVE
2466.0	2588.1	GARDEN_GULCH / L-1
5825.0	6206.2	WASATCH_G
8150.0	8677.7	WILLIAMS_FORK
8190.0	8717.7	TOG
12066.0	12593.7	ROLLINS
12244.0	12771.7	COZZETTE
12524.0	13051.7	CORCORAN
12678.0	13205.7	LOWER_SEGO
12735.0	13262.7	SEGO

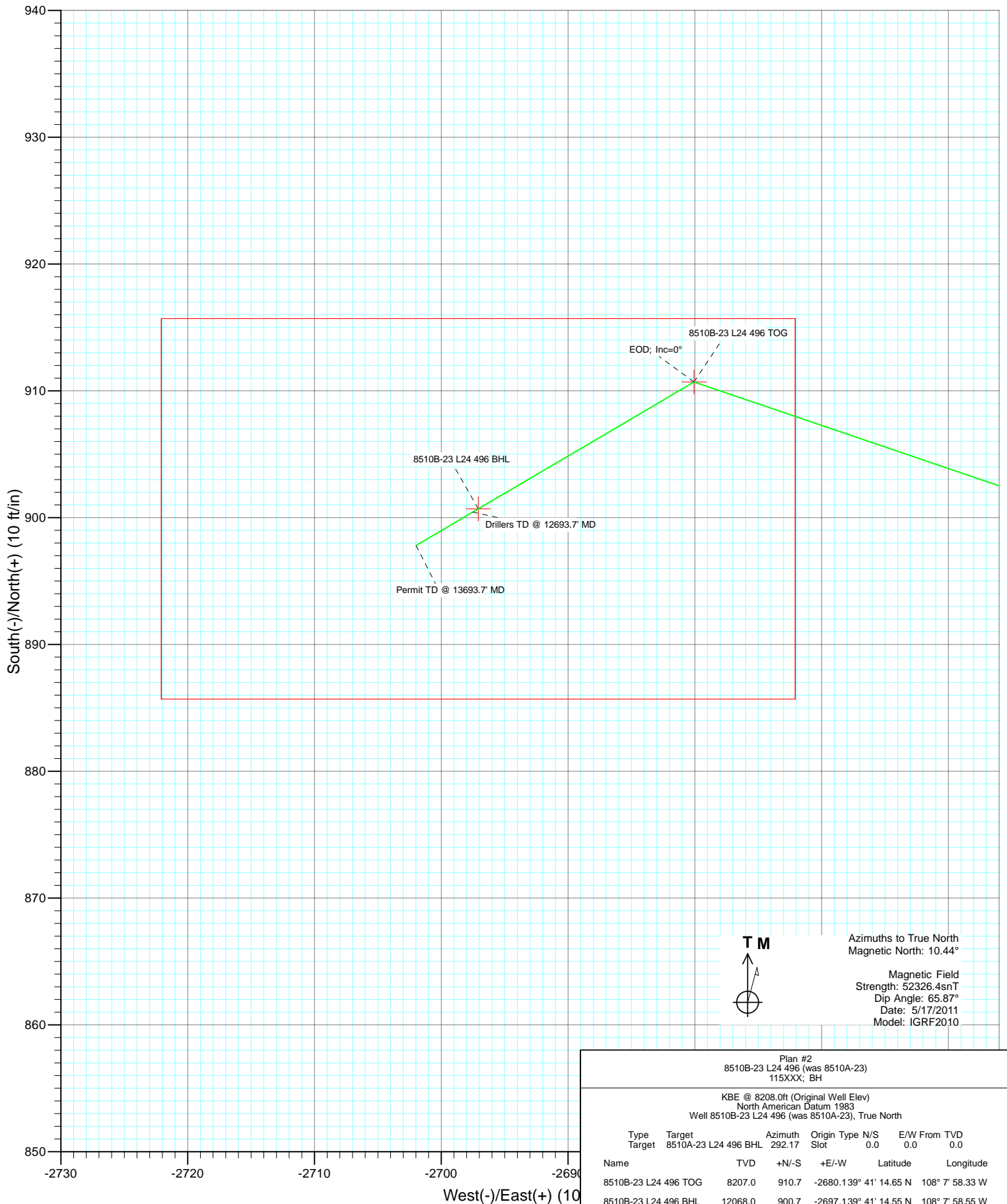
Plan #2
8510B-23 L24 496 (was 8510A-23)
115XXX; BH

KBE @ 8208.0ft (Original Well Elev)
North American Datum 1983
Well 8510B-23 L24 496 (was 8510A-23), True North

Type	Target	Target	Azimuth	Origin	Type	N/S	E/W	From	TVD
Target	8510A-23	L24 496 BHL	292.17	Slot		0.0	0.0		0.0
Name	TVD	+N/-S	+E/-W	Latitude	Longitude				
8510B-23 L24 496 TOG	8207.0	910.7	-2680.139° 41'	14.65 N	108° 7' 58.33 W				
8510B-23 L24 496 BHL	12068.0	900.7	-2697.139° 41'	14.55 N	108° 7' 58.55 W				



Project: Story Gulch
 Site: L24 496
 Well: 8510B-23 L24 496 (was 8510A-23)
 Wellbore: DD
 Design: Plan #2



Azimuths to True North
 Magnetic North: 10.44°
 Magnetic Field
 Strength: 52326.4snT
 Dip Angle: 65.87°
 Date: 5/17/2011
 Model: IGRF2010

Plan #2 8510B-23 L24 496 (was 8510A-23) 115XXX; BH						
KBE @ 8208.0ft (Original Well Elev) North American Datum 1983 Well 8510B-23 L24 496 (was 8510A-23), True North						
Type	Target	Azimuth	Origin Type	N/S	E/W	From TVD
Target	8510A-23 L24 496 BHL	292.17	Slot	0.0	0.0	0.0
Name	TV	+N/-S	+E/-W	Latitude	Longitude	
8510B-23 L24 496 TOG	8207.0	910.7	-2680.139° 41'	14.65 N	108° 7' 58.33 W	
8510B-23 L24 496 BHL	12068.0	900.7	-2697.139° 41'	14.55 N	108° 7' 58.55 W	

Cathedral Energy Services

Planning Report

Database:	EDM 5000.1 US Multi Users DB	Local Co-ordinate Reference:	Well 8510B-23 L24 496 (was 8510A-23)
Company:	EnCana Oil & Gas (USA) Inc	TVD Reference:	KBE @ 8208.0ft (Original Well Elev)
Project:	Story Gulch	MD Reference:	KBE @ 8208.0ft (Original Well Elev)
Site:	L24 496	North Reference:	True
Well:	8510B-23 L24 496 (was 8510A-23)	Survey Calculation Method:	Minimum Curvature
Wellbore:	DD		
Design:	Plan #2		

Project	Story Gulch		
Map System:	US State Plane 1983	System Datum:	Mean Sea Level
Geo Datum:	North American Datum 1983		
Map Zone:	Colorado Central Zone		

Site		L24 496			
Site Position:		Northing:	1,685,024.52 ft	Latitude:	39° 41' 5.72 N
From:	Lat/Long	Easting:	2,261,789.15 ft	Longitude:	108° 7' 23.99 W
Position Uncertainty:	0.0 ft	Slot Radius:	13.200 in	Grid Convergence:	-1.65 °

Well	8510B-23 L24 496 (was 8510A-23)					
Well Position	+N/-S	0.0 ft	Northing:	1,685,017.56 ft	Latitude:	39° 41' 5.65 N
	+E/-W	0.0 ft	Easting:	2,261,784.26 ft	Longitude:	108° 7' 24.05 W
Position Uncertainty		0.0 ft	Wellhead Elevation:	ft	Ground Level:	8,193.0 ft

Wellbore	DD				
Magnetics	Model Name	Sample Date	Declination (°)	Dip Angle (°)	Field Strength (nT)
	IGRF2010	5/17/2011	10.44	65.87	52,326

Design	Plan #2			
Audit Notes:				
Version:	Phase:	PLAN	Tie On Depth:	0.0
Vertical Section:	Depth From (TVD) (ft)	+N/-S (ft)	+E/-W (ft)	Direction (°)
	0.0	0.0	0.0	292.17

Plan Sections										
Measured Depth (ft)	Inclination (°)	Azimuth (°)	Vertical Depth (ft)	+N/-S (ft)	+E/-W (ft)	Dogleg Rate (°/100ft)	Build Rate (°/100ft)	Turn Rate (°/100ft)	TFO (°)	Target
0.0	0.00	0.00	0.0	0.0	0.0	0.00	0.00	0.00	0.00	
400.0	0.00	0.00	400.0	0.0	0.0	0.00	0.00	0.00	0.00	
1,127.2	21.82	288.77	1,109.8	44.0	-129.5	3.00	3.00	0.00	288.77	
8,007.5	21.82	288.77	7,497.2	866.7	-2,550.5	0.00	0.00	0.00	0.00	
8,734.7	0.00	0.00	8,207.0	910.7	-2,680.1	3.00	-3.00	0.00	180.00	8510B-23 L24 496 TC
8,853.7	0.30	239.56	8,326.0	910.5	-2,680.3	0.25	0.25	-101.20	239.56	
12,595.7	0.30	239.56	12,068.0	900.7	-2,697.1	0.00	0.00	0.00	0.00	8510B-23 L24 496 B+
12,693.7	0.30	239.56	12,166.0	900.4	-2,697.5	0.00	0.00	0.00	0.00	
13,693.7	0.30	239.56	13,166.0	897.8	-2,702.0	0.00	0.00	0.00	0.00	

Cathedral Energy Services

Planning Report

Database:	EDM 5000.1 US Multi Users DB	Local Co-ordinate Reference:	Well 8510B-23 L24 496 (was 8510A-23)
Company:	EnCana Oil & Gas (USA) Inc	TVD Reference:	KBE @ 8208.0ft (Original Well Elev)
Project:	Story Gulch	MD Reference:	KBE @ 8208.0ft (Original Well Elev)
Site:	L24 496	North Reference:	True
Well:	8510B-23 L24 496 (was 8510A-23)	Survey Calculation Method:	Minimum Curvature
Wellbore:	DD		
Design:	Plan #2		

Planned Survey

Measured Depth (ft)	Inclination (°)	Azimuth (°)	Vertical Depth (ft)	+N/-S (ft)	+E/-W (ft)	Vertical Section (ft)	Dogleg Rate (°/100ft)	Build Rate (°/100ft)	Comments / Formations
0.0	0.00	0.00	0.0	0.0	0.0	0.0	0.00	0.00	
100.0	0.00	0.00	100.0	0.0	0.0	0.0	0.00	0.00	
200.0	0.00	0.00	200.0	0.0	0.0	0.0	0.00	0.00	
300.0	0.00	0.00	300.0	0.0	0.0	0.0	0.00	0.00	
400.0	0.00	0.00	400.0	0.0	0.0	0.0	0.00	0.00	KOP @ 400' MD
500.0	3.00	288.77	500.0	0.8	-2.5	2.6	3.00	3.00	
600.0	6.00	288.77	599.6	3.4	-9.9	10.4	3.00	3.00	
700.0	9.00	288.77	698.8	7.6	-22.3	23.5	3.00	3.00	
800.0	12.00	288.77	797.1	13.4	-39.5	41.7	3.00	3.00	
900.0	15.00	288.77	894.3	20.9	-61.6	65.0	3.00	3.00	
1,000.0	18.00	288.77	990.2	30.1	-88.5	93.3	3.00	3.00	
1,100.0	21.00	288.77	1,084.4	40.8	-120.1	126.6	3.00	3.00	
1,127.2	21.82	288.77	1,109.8	44.0	-129.5	136.6	3.00	3.00	EOB; Inc=21.82°
1,200.0	21.82	288.77	1,177.3	52.7	-155.1	163.5	0.00	0.00	
1,300.0	21.82	288.77	1,270.2	64.7	-190.3	200.6	0.00	0.00	
1,326.7	21.82	288.77	1,295.0	67.9	-199.7	210.6	0.00	0.00	A_GROOVE
1,400.0	21.82	288.77	1,363.0	76.6	-225.5	237.7	0.00	0.00	
1,500.0	21.82	288.77	1,455.9	88.6	-260.7	274.8	0.00	0.00	
1,600.0	21.82	288.77	1,548.7	100.5	-295.9	311.9	0.00	0.00	
1,700.0	21.82	288.77	1,641.5	112.5	-331.1	349.0	0.00	0.00	
1,800.0	21.82	288.77	1,734.4	124.5	-366.3	386.1	0.00	0.00	
1,900.0	21.82	288.77	1,827.2	136.4	-401.4	423.2	0.00	0.00	
2,000.0	21.82	288.77	1,920.0	148.4	-436.6	460.3	0.00	0.00	
2,100.0	21.82	288.77	2,012.9	160.3	-471.8	497.4	0.00	0.00	
2,200.0	21.82	288.77	2,105.7	172.3	-507.0	534.5	0.00	0.00	
2,300.0	21.82	288.77	2,198.6	184.2	-542.2	571.6	0.00	0.00	
2,400.0	21.82	288.77	2,291.4	196.2	-577.4	608.7	0.00	0.00	
2,500.0	21.82	288.77	2,384.2	208.2	-612.6	645.8	0.00	0.00	
2,588.1	21.82	288.77	2,466.0	218.7	-643.6	678.5	0.00	0.00	GARDEN_GULCH / L-1
2,600.0	21.82	288.77	2,477.1	220.1	-647.8	682.9	0.00	0.00	
2,700.0	21.82	288.77	2,569.9	232.1	-682.9	720.0	0.00	0.00	
2,800.0	21.82	288.77	2,662.7	244.0	-718.1	757.1	0.00	0.00	
2,900.0	21.82	288.77	2,755.6	256.0	-753.3	794.2	0.00	0.00	
3,000.0	21.82	288.77	2,848.4	267.9	-788.5	831.3	0.00	0.00	
3,100.0	21.82	288.77	2,941.3	279.9	-823.7	868.4	0.00	0.00	
3,200.0	21.82	288.77	3,034.1	291.9	-858.9	905.5	0.00	0.00	
3,300.0	21.82	288.77	3,126.9	303.8	-894.1	942.6	0.00	0.00	
3,400.0	21.82	288.77	3,219.8	315.8	-929.3	979.7	0.00	0.00	
3,500.0	21.82	288.77	3,312.6	327.7	-964.5	1,016.8	0.00	0.00	
3,600.0	21.82	288.77	3,405.4	339.7	-999.6	1,053.9	0.00	0.00	
3,700.0	21.82	288.77	3,498.3	351.6	-1,034.8	1,091.0	0.00	0.00	
3,800.0	21.82	288.77	3,591.1	363.6	-1,070.0	1,128.1	0.00	0.00	
3,900.0	21.82	288.77	3,684.0	375.6	-1,105.2	1,165.2	0.00	0.00	
4,000.0	21.82	288.77	3,776.8	387.5	-1,140.4	1,202.3	0.00	0.00	
4,100.0	21.82	288.77	3,869.6	399.5	-1,175.6	1,239.4	0.00	0.00	
4,200.0	21.82	288.77	3,962.5	411.4	-1,210.8	1,276.5	0.00	0.00	
4,300.0	21.82	288.77	4,055.3	423.4	-1,246.0	1,313.6	0.00	0.00	
4,400.0	21.82	288.77	4,148.1	435.3	-1,281.1	1,350.7	0.00	0.00	
4,500.0	21.82	288.77	4,241.0	447.3	-1,316.3	1,387.8	0.00	0.00	
4,600.0	21.82	288.77	4,333.8	459.3	-1,351.5	1,424.9	0.00	0.00	
4,700.0	21.82	288.77	4,426.7	471.2	-1,386.7	1,462.0	0.00	0.00	
4,800.0	21.82	288.77	4,519.5	483.2	-1,421.9	1,499.1	0.00	0.00	

Cathedral Energy Services

Planning Report

Database:	EDM 5000.1 US Multi Users DB	Local Co-ordinate Reference:	Well 8510B-23 L24 496 (was 8510A-23)
Company:	EnCana Oil & Gas (USA) Inc	TVD Reference:	KBE @ 8208.0ft (Original Well Elev)
Project:	Story Gulch	MD Reference:	KBE @ 8208.0ft (Original Well Elev)
Site:	L24 496	North Reference:	True
Well:	8510B-23 L24 496 (was 8510A-23)	Survey Calculation Method:	Minimum Curvature
Wellbore:	DD		
Design:	Plan #2		

Planned Survey									
Measured Depth (ft)	Inclination (°)	Azimuth (°)	Vertical Depth (ft)	+N/-S (ft)	+E/-W (ft)	Vertical Section (ft)	Dogleg Rate (°/100ft)	Build Rate (°/100ft)	Comments / Formations
4,900.0	21.82	288.77	4,612.3	495.1	-1,457.1	1,536.2	0.00	0.00	
5,000.0	21.82	288.77	4,705.2	507.1	-1,492.3	1,573.3	0.00	0.00	
5,100.0	21.82	288.77	4,798.0	519.0	-1,527.5	1,610.4	0.00	0.00	
5,200.0	21.82	288.77	4,890.8	531.0	-1,562.6	1,647.5	0.00	0.00	
5,300.0	21.82	288.77	4,983.7	543.0	-1,597.8	1,684.6	0.00	0.00	
5,400.0	21.82	288.77	5,076.5	554.9	-1,633.0	1,721.7	0.00	0.00	
5,500.0	21.82	288.77	5,169.4	566.9	-1,668.2	1,758.8	0.00	0.00	
5,600.0	21.82	288.77	5,262.2	578.8	-1,703.4	1,795.9	0.00	0.00	
5,700.0	21.82	288.77	5,355.0	590.8	-1,738.6	1,833.0	0.00	0.00	
5,800.0	21.82	288.77	5,447.9	602.7	-1,773.8	1,870.1	0.00	0.00	
5,900.0	21.82	288.77	5,540.7	614.7	-1,809.0	1,907.2	0.00	0.00	
6,000.0	21.82	288.77	5,633.5	626.7	-1,844.2	1,944.3	0.00	0.00	
6,100.0	21.82	288.77	5,726.4	638.6	-1,879.3	1,981.4	0.00	0.00	
6,200.0	21.82	288.77	5,819.2	650.6	-1,914.5	2,018.5	0.00	0.00	
6,206.2	21.82	288.77	5,825.0	651.3	-1,916.7	2,020.8	0.00	0.00	WASATCH_G
6,300.0	21.82	288.77	5,912.1	662.5	-1,949.7	2,055.6	0.00	0.00	
6,400.0	21.82	288.77	6,004.9	674.5	-1,984.9	2,092.7	0.00	0.00	
6,500.0	21.82	288.77	6,097.7	686.4	-2,020.1	2,129.8	0.00	0.00	
6,600.0	21.82	288.77	6,190.6	698.4	-2,055.3	2,166.9	0.00	0.00	
6,700.0	21.82	288.77	6,283.4	710.4	-2,090.5	2,204.0	0.00	0.00	
6,800.0	21.82	288.77	6,376.2	722.3	-2,125.7	2,241.1	0.00	0.00	
6,900.0	21.82	288.77	6,469.1	734.3	-2,160.8	2,278.2	0.00	0.00	
7,000.0	21.82	288.77	6,561.9	746.2	-2,196.0	2,315.3	0.00	0.00	
7,100.0	21.82	288.77	6,654.8	758.2	-2,231.2	2,352.4	0.00	0.00	
7,200.0	21.82	288.77	6,747.6	770.1	-2,266.4	2,389.5	0.00	0.00	
7,300.0	21.82	288.77	6,840.4	782.1	-2,301.6	2,426.6	0.00	0.00	
7,400.0	21.82	288.77	6,933.3	794.1	-2,336.8	2,463.7	0.00	0.00	
7,500.0	21.82	288.77	7,026.1	806.0	-2,372.0	2,500.8	0.00	0.00	
7,600.0	21.82	288.77	7,118.9	818.0	-2,407.2	2,537.9	0.00	0.00	
7,700.0	21.82	288.77	7,211.8	829.9	-2,442.4	2,575.0	0.00	0.00	
7,800.0	21.82	288.77	7,304.6	841.9	-2,477.5	2,612.1	0.00	0.00	
7,900.0	21.82	288.77	7,397.5	853.8	-2,512.7	2,649.2	0.00	0.00	
8,000.0	21.82	288.77	7,490.3	865.8	-2,547.9	2,686.3	0.00	0.00	
8,007.5	21.82	288.77	7,497.2	866.7	-2,550.5	2,689.0	0.00	0.00	Start Drop -3.00
8,100.0	19.04	288.77	7,583.9	877.1	-2,581.1	2,721.3	3.00	-3.00	
8,200.0	16.04	288.77	7,679.3	886.8	-2,609.7	2,751.3	3.00	-3.00	
8,300.0	13.04	288.77	7,776.1	894.9	-2,633.4	2,776.4	3.00	-3.00	
8,400.0	10.04	288.77	7,874.0	901.3	-2,652.4	2,796.4	3.00	-3.00	
8,500.0	7.04	288.77	7,972.9	906.1	-2,666.4	2,811.2	3.00	-3.00	
8,600.0	4.04	288.77	8,072.4	909.2	-2,675.6	2,820.8	3.00	-3.00	
8,677.7	1.71	288.77	8,150.0	910.4	-2,679.2	2,824.7	3.00	-3.00	WILLIAMS_FORK
8,700.0	1.04	288.77	8,172.3	910.6	-2,679.8	2,825.3	3.00	-3.00	
8,717.7	0.51	288.77	8,190.0	910.7	-2,680.0	2,825.5	3.00	-3.00	TOG
8,734.7	0.00	0.00	8,207.0	910.7	-2,680.1	2,825.6	3.00	-3.00	EOD; Inc=0° - 8510B-23 L24 496 TOG - 8510A
8,800.0	0.16	239.56	8,272.3	910.7	-2,680.1	2,825.6	0.25	0.25	
8,853.7	0.30	239.56	8,326.0	910.5	-2,680.3	2,825.8	0.25	0.25	
8,900.0	0.30	239.56	8,372.3	910.4	-2,680.5	2,825.9	0.00	0.00	
9,000.0	0.30	239.56	8,472.3	910.2	-2,681.0	2,826.2	0.00	0.00	
9,100.0	0.30	239.56	8,572.3	909.9	-2,681.4	2,826.5	0.00	0.00	
9,200.0	0.30	239.56	8,672.3	909.6	-2,681.9	2,826.8	0.00	0.00	
9,300.0	0.30	239.56	8,772.3	909.4	-2,682.3	2,827.2	0.00	0.00	
9,400.0	0.30	239.56	8,872.3	909.1	-2,682.8	2,827.5	0.00	0.00	

Cathedral Energy Services

Planning Report

Database:	EDM 5000.1 US Multi Users DB	Local Co-ordinate Reference:	Well 8510B-23 L24 496 (was 8510A-23)
Company:	EnCana Oil & Gas (USA) Inc	TVD Reference:	KBE @ 8208.0ft (Original Well Elev)
Project:	Story Gulch	MD Reference:	KBE @ 8208.0ft (Original Well Elev)
Site:	L24 496	North Reference:	True
Well:	8510B-23 L24 496 (was 8510A-23)	Survey Calculation Method:	Minimum Curvature
Wellbore:	DD		
Design:	Plan #2		

Planned Survey

Measured Depth (ft)	Inclination (°)	Azimuth (°)	Vertical Depth (ft)	+N/-S (ft)	+E/-W (ft)	Vertical Section (ft)	Dogleg Rate (°/100ft)	Build Rate (°/100ft)	Comments / Formations
9,500.0	0.30	239.56	8,972.3	908.8	-2,683.2	2,827.8	0.00	0.00	
9,600.0	0.30	239.56	9,072.3	908.6	-2,683.7	2,828.1	0.00	0.00	
9,700.0	0.30	239.56	9,172.3	908.3	-2,684.1	2,828.4	0.00	0.00	
9,800.0	0.30	239.56	9,272.3	908.1	-2,684.6	2,828.7	0.00	0.00	
9,900.0	0.30	239.56	9,372.3	907.8	-2,685.0	2,829.1	0.00	0.00	
10,000.0	0.30	239.56	9,472.3	907.5	-2,685.5	2,829.4	0.00	0.00	
10,100.0	0.30	239.56	9,572.3	907.3	-2,685.9	2,829.7	0.00	0.00	
10,200.0	0.30	239.56	9,672.3	907.0	-2,686.3	2,830.0	0.00	0.00	
10,300.0	0.30	239.56	9,772.3	906.7	-2,686.8	2,830.3	0.00	0.00	
10,400.0	0.30	239.56	9,872.3	906.5	-2,687.2	2,830.6	0.00	0.00	
10,500.0	0.30	239.56	9,972.3	906.2	-2,687.7	2,830.9	0.00	0.00	
10,600.0	0.30	239.56	10,072.3	905.9	-2,688.1	2,831.3	0.00	0.00	
10,700.0	0.30	239.56	10,172.3	905.7	-2,688.6	2,831.6	0.00	0.00	
10,800.0	0.30	239.56	10,272.3	905.4	-2,689.0	2,831.9	0.00	0.00	
10,900.0	0.30	239.56	10,372.3	905.2	-2,689.5	2,832.2	0.00	0.00	
11,000.0	0.30	239.56	10,472.3	904.9	-2,689.9	2,832.5	0.00	0.00	
11,100.0	0.30	239.56	10,572.3	904.6	-2,690.4	2,832.8	0.00	0.00	
11,200.0	0.30	239.56	10,672.3	904.4	-2,690.8	2,833.2	0.00	0.00	
11,300.0	0.30	239.56	10,772.3	904.1	-2,691.3	2,833.5	0.00	0.00	
11,400.0	0.30	239.56	10,872.3	903.8	-2,691.7	2,833.8	0.00	0.00	
11,500.0	0.30	239.56	10,972.3	903.6	-2,692.2	2,834.1	0.00	0.00	
11,600.0	0.30	239.56	11,072.3	903.3	-2,692.6	2,834.4	0.00	0.00	
11,700.0	0.30	239.56	11,172.3	903.1	-2,693.1	2,834.7	0.00	0.00	
11,800.0	0.30	239.56	11,272.3	902.8	-2,693.5	2,835.0	0.00	0.00	
11,900.0	0.30	239.56	11,372.3	902.5	-2,694.0	2,835.4	0.00	0.00	
12,000.0	0.30	239.56	11,472.3	902.3	-2,694.4	2,835.7	0.00	0.00	
12,100.0	0.30	239.56	11,572.3	902.0	-2,694.9	2,836.0	0.00	0.00	
12,200.0	0.30	239.56	11,672.3	901.7	-2,695.3	2,836.3	0.00	0.00	
12,300.0	0.30	239.56	11,772.3	901.5	-2,695.7	2,836.6	0.00	0.00	
12,400.0	0.30	239.56	11,872.3	901.2	-2,696.2	2,836.9	0.00	0.00	
12,500.0	0.30	239.56	11,972.3	900.9	-2,696.6	2,837.3	0.00	0.00	
12,593.7	0.30	239.56	12,066.0	900.7	-2,697.1	2,837.6	0.00	0.00	ROLLINS
12,595.2	0.30	239.56	12,067.5	900.7	-2,697.1	2,837.6	0.00	0.00	8510A-23 L24 496 BHL
12,595.7	0.30	239.56	12,068.0	900.7	-2,697.1	2,837.6	0.00	0.00	8510B-23 L24 496 BHL
12,600.0	0.30	239.56	12,072.3	900.7	-2,697.1	2,837.6	0.00	0.00	
12,693.7	0.30	239.56	12,166.0	900.4	-2,697.5	2,837.9	0.00	0.00	Drillers TD @ 12693.7' MD
12,700.0	0.30	239.56	12,172.3	900.4	-2,697.5	2,837.9	0.00	0.00	
12,771.7	0.30	239.56	12,244.0	900.2	-2,697.9	2,838.1	0.00	0.00	COZZETTE
12,800.0	0.30	239.56	12,272.3	900.2	-2,698.0	2,838.2	0.00	0.00	
12,900.0	0.30	239.56	12,372.3	899.9	-2,698.4	2,838.5	0.00	0.00	
13,000.0	0.30	239.56	12,472.3	899.6	-2,698.9	2,838.8	0.00	0.00	
13,051.7	0.30	239.56	12,524.0	899.5	-2,699.1	2,839.0	0.00	0.00	CORCORAN
13,100.0	0.30	239.56	12,572.3	899.4	-2,699.3	2,839.1	0.00	0.00	
13,200.0	0.30	239.56	12,672.3	899.1	-2,699.8	2,839.5	0.00	0.00	
13,205.7	0.30	239.56	12,678.0	899.1	-2,699.8	2,839.5	0.00	0.00	LOWER_SEGO
13,262.7	0.30	239.56	12,735.0	898.9	-2,700.1	2,839.7	0.00	0.00	SEGO
13,300.0	0.30	239.56	12,772.3	898.8	-2,700.2	2,839.8	0.00	0.00	
13,400.0	0.30	239.56	12,872.3	898.6	-2,700.7	2,840.1	0.00	0.00	
13,500.0	0.30	239.56	12,972.3	898.3	-2,701.1	2,840.4	0.00	0.00	
13,600.0	0.30	239.56	13,072.3	898.1	-2,701.6	2,840.7	0.00	0.00	
13,693.7	0.30	239.56	13,166.0	897.8	-2,702.0	2,841.0	0.00	0.00	Permit TD @ 13693.7' MD

Cathedral Energy Services

Planning Report

Database:	EDM 5000.1 US Multi Users DB	Local Co-ordinate Reference:	Well 8510B-23 L24 496 (was 8510A-23)
Company:	EnCana Oil & Gas (USA) Inc	TVD Reference:	KBE @ 8208.0ft (Original Well Elev)
Project:	Story Gulch	MD Reference:	KBE @ 8208.0ft (Original Well Elev)
Site:	L24 496	North Reference:	True
Well:	8510B-23 L24 496 (was 8510A-23)	Survey Calculation Method:	Minimum Curvature
Wellbore:	DD		
Design:	Plan #2		

Targets									
Target Name									
- hit/miss target	Dip Angle	Dip Dir.	TVD	+N/-S	+E/-W	Northing	Easting	Latitude	Longitude
- Shape	(°)	(°)	(ft)	(ft)	(ft)	(ft)	(ft)		
8510A-23 L24 496 BHL	0.00	0.00	12,068.0	1,099.0	-2,697.1	1,686,193.99	2,259,120.06	39° 41' 16.51 N	108° 7' 58.55 W
- plan misses target center by 198.3ft at 12595.2ft MD (12067.5 TVD, 900.7 N, -2697.1 E)									
- Rectangle (sides W30.0 H50.0 D0.0)									
8510B-23 L24 496 BHL	0.00	0.00	12,068.0	900.7	-2,697.1	1,685,995.75	2,259,114.32	39° 41' 14.55 N	108° 7' 58.55 W
- plan hits target center									
- Rectangle (sides W30.0 H50.0 D0.0)									
8510B-23 L24 496 TOG	0.00	0.00	8,207.0	910.7	-2,680.1	1,686,005.26	2,259,131.62	39° 41' 14.65 N	108° 7' 58.33 W
- plan hits target center									
- Point									
8510A-23 L24 496 TOG	0.00	0.00	8,207.0	1,109.1	-2,680.1	1,686,203.54	2,259,137.34	39° 41' 16.61 N	108° 7' 58.33 W
- plan misses target center by 198.4ft at 8734.7ft MD (8207.0 TVD, 910.7 N, -2680.1 E)									
- Point									

Formations						
Measured Depth	Vertical Depth	Name	Lithology	Dip	Dip Direction	
(ft)	(ft)			(°)	(°)	
1,326.7	1,295.0	A_GROOVE				
2,588.1	2,466.0	GARDEN_GULCH / L-1				
6,206.2	5,825.0	WASATCH_G				
8,677.7	8,150.0	WILLIAMS_FORK				
8,717.7	8,190.0	TOG				
12,593.7	12,066.0	ROLLINS				
12,771.7	12,244.0	COZZETTE				
13,051.7	12,524.0	CORCORAN				
13,205.7	12,678.0	LOWER_SEGO				
13,262.7	12,735.0	SEGO				

Plan Annotations					
Measured Depth	Vertical Depth	Local Coordinates		Comment	
(ft)	(ft)	+N/-S (ft)	+E/-W (ft)		
400.0	400.0	0.0	0.0	KOP @ 400' MD	
1,127.2	1,109.8	44.0	-129.5	EOB; Inc=21.82°	
8,007.5	7,497.2	866.7	-2,550.5	Start Drop -3.00	
8,734.7	8,207.0	910.7	-2,680.1	EOD; Inc=0°	
12,693.7	12,166.0	900.4	-2,697.5	Drillers TD @ 12693.7' MD	
13,693.7	13,166.0	897.8	-2,702.0	Permit TD @ 13693.7' MD	