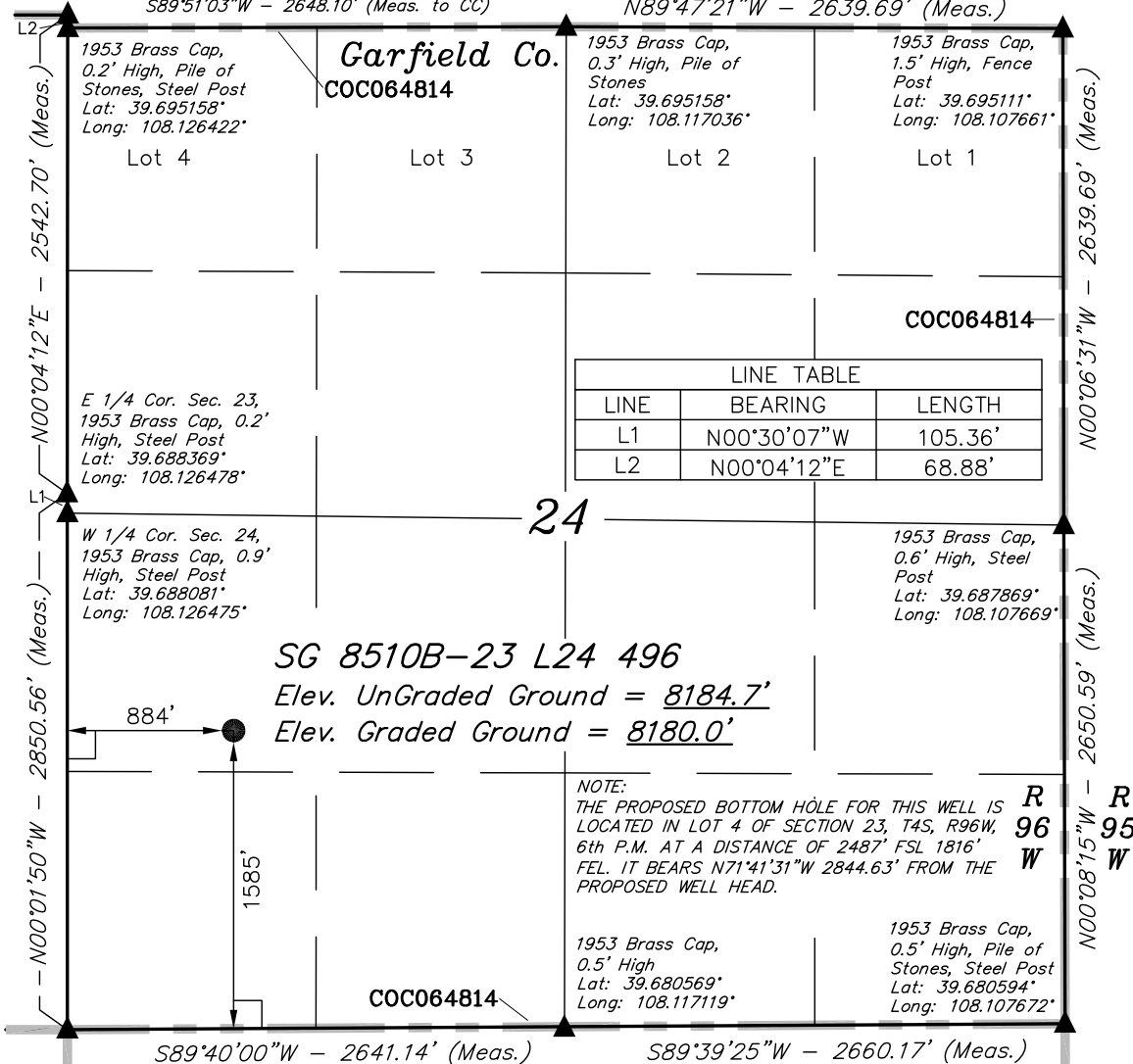


NE Cor Sec 23
1953 Brass Cap,
0.6' High, Pile of
Stones
Lat: 39.695347°
Long: 108.126444°

T4S, R96W, 6th P.M.
Rio Blanco Co.

S89°51'03"W - 2648.68' (Meas. to True)
S89°51'03"W - 2648.10' (Meas. to CC)

N89°47'21"W - 2639.69' (Meas.)



LEGEND:

- └─┘ = 90° SYMBOL
- = PROPOSED WELL HEAD.
- ▲ = SECTION CORNERS LOCATED.

SEE SHEET 7A FOR EXISTING
IMPROVEMENT WITHIN 400' OF THE
PROPOSED WELL DISTURBANCE

PDOP = 1.6

NAD 83 (SURFACE LOCATION)		
LATITUDE	=	39°41'05.65" (39.684903)
LONGITUDE	=	108°07'24.05" (108.123347)
NAD 27 (SURFACE LOCATION)		
LATITUDE	=	39°41'05.74" (39.684928)
LONGITUDE	=	108°07'21.76" (108.122711)

Encana OIL & GAS (USA) INC.

Well location, SG 8510B-23 L24 496 (SURFACE LOCATION), located as shown in the NW 1/4 SW 1/4 of Section 24, T4S, R96W, 6th P.M., Garfield County, Colorado.

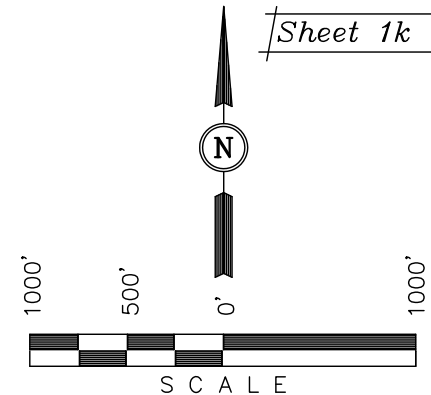
BASIS OF ELEVATION

BENCH MARK (H79) LOCATED IN THE NE 1/4 OF SECTION 25, T4S, R98W, 6th P.M. TAKEN FROM THE BULL FORK QUADRANGLE, COLORADO, 7.5 MINUTE SERIES (TOPO GRAPHICAL MAP) PUBLISHED BY THE UNITED STATES DEPARTMENT OF THE INTERIOR, GEOLOGICAL SURVEY. SAID ELEVATION IS MARKED AS BEING 8535 FEET.

BASIS OF BEARINGS

BASIS OF BEARINGS IS A G.P.S. OBSERVATION.

Sheet 1k of 11



CERTIFICATE

THIS IS TO CERTIFY THAT THE ABOVE PLAT WAS PREPARED FROM FIELD NOTES OF ACTUAL SURVEYS MADE BY ME OR UNDER MY SUPERVISION AND THAT THE SAME ARE TRUE AND CORRECT TO THE BEST OF MY KNOWLEDGE AND BELIEF.

REGISTERED LAND SURVEYOR
REGISTRATION NO. 17492
STATE OF COLORADO
08-09-2011

UINTAH ENGINEERING & LAND SURVEYING
85 SOUTH 200 EAST - VERNAL, UTAH 84078
(435) 789-1017

SCALE 1" = 1000'	DATE SURVEYED: 08-18-10	DATE DRAWN: 06-09-11
PARTY B.J. D.B. D.R.B.	REFERENCES G.L.O. PLAT	
WEATHER COOL	FILE Encana OIL & GAS (USA) INC.	

1953 Brass Cap,
0.8' High, Pile of
Stones
Lat: 39.695233°
Long: 108.145544°

T4S, R96W, 6th P.M.
Rio Blanco Co.

1953 Brass Cap,
0.6' High, Pile of
Stones
Lat: 39.695347°
Long: 108.126444°

Encana OIL & GAS (USA) INC.

Well location, SG 8510B-23 L24 496 (TARGET
BOTTOM HOLE), located as shown in Lot 4 of
Section 23, T4S, R96W, 6th P.M., Garfield
County, Colorado.

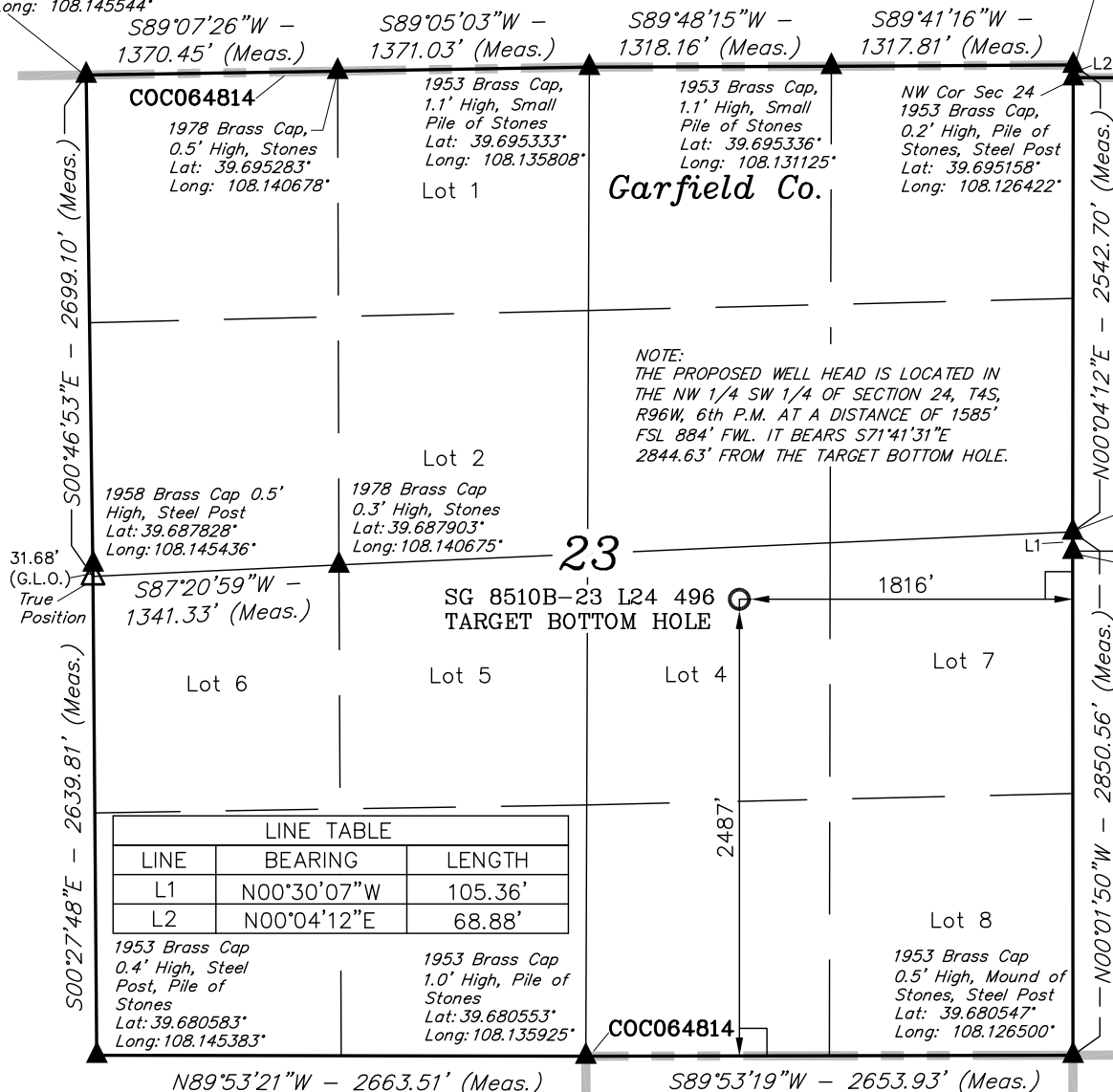
BASIS OF ELEVATION

BENCH MARK (H79) LOCATED IN THE NE 1/4 OF SECTION
25, T4S, R98W, 6th P.M. TAKEN FROM THE BULL FORK
QUADRANGLE, COLORADO, 7.5 MINUTE SERIES (TOPO
GRAPHICAL MAP) PUBLISHED BY THE UNITED STATES
DEPARTMENT OF THE INTERIOR, GEOLOGICAL SURVEY.
SAID ELEVATION IS MARKED AS BEING 8535 FEET.

BASIS OF BEARINGS

BASIS OF BEARINGS IS A G.P.S. OBSERVATION.

Sheet 11 of 11



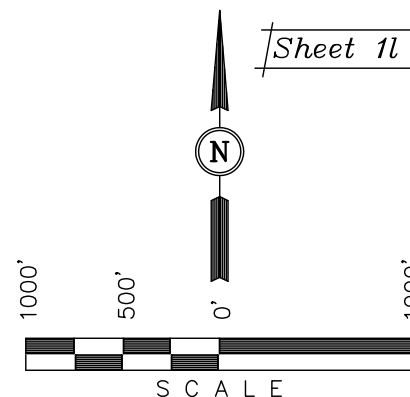
LEGEND:

- └─┘ = 90° SYMBOL
- = PROPOSED WELL HEAD.
- ▲ = SECTION CORNERS LOCATED.
- △ = SECTION CORNERS RE-EST.
(Not Set on Ground)

NAD 83 (TARGET BOTTOM HOLE)	
LATITUDE	= 39°41'14.55" (39.687375)
LONGITUDE	= 108°07'58.55" (108.132931)
NAD 27 (TARGET BOTTOM HOLE)	
LATITUDE	= 39°41'14.64" (39.687400)
LONGITUDE	= 108°07'56.26" (108.132294)

E 1/4 Cor. Sec. 23,
1953 Brass Cap, 0.2'
High, Steel Post
Lat: 39.688369°
Long: 108.126478°

W 1/4 Cor. Sec. 24,
1953 Brass Cap, 0.9'
High, Steel Post
Lat: 39.688081°
Long: 108.126475°



CERTIFICATE

THIS IS TO CERTIFY THAT THE ABOVE PLAT WAS PREPARED FROM
FIELD NOTES OF ACTUAL SURVEYS MADE BY ME OR UNDER MY
SUPERVISION AND THAT THE SAME ARE TRUE AND CORRECT TO THE
BEST OF MY KNOWLEDGE AND BELIEF.

REGISTERED LAND SURVEYOR
REGISTRATION NO. 17492
STATE OF COLORADO
08-09-2011

UINTAH ENGINEERING & LAND SURVEYING
85 SOUTH 200 EAST - VERNAL, UTAH 84078
(435) 789-1017

SCALE 1" = 1000'	DATE SURVEYED: 08-18-10	DATE DRAWN: 06-09-11
PARTY B.J. D.B. D.R.B.	REFERENCES G.L.O. PLAT	
WEATHER COOL	FILE Encana OIL & GAS (USA) INC.	