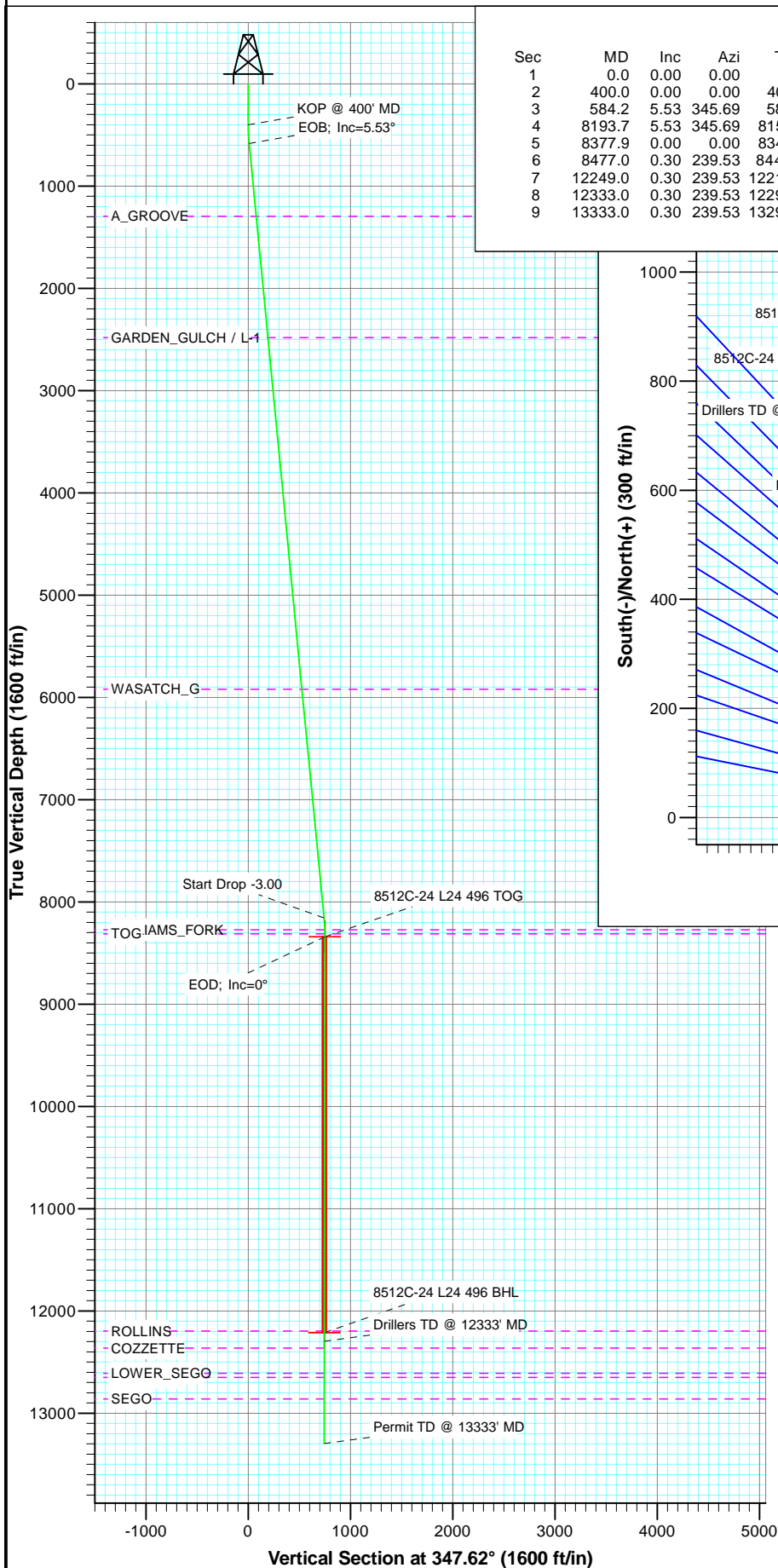


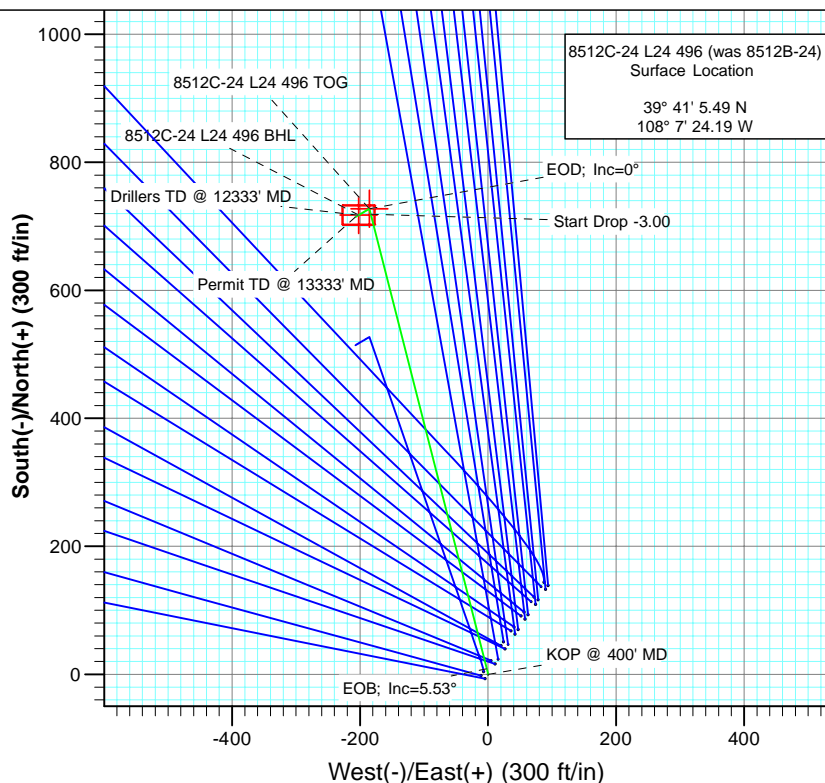


Project: Story Gulch
Site: L24 496
Well: 8512C-24 L24 496 (was 8512B-24)
Wellbore: DD
Plan: Plan #2



SECTION DETAILS

Sec	MD	Inc	Azi	TVD	+N/-S	+E/-W	Dleg	TFace	VSec	Target
1	0.0	0.00	0.00	0.0	0.0	0.0	0.00	0.00	0.0	
2	400.0	0.00	0.00	400.0	0.0	0.0	0.00	0.00	0.0	
3	584.2	5.53	345.69	584.0	8.6	-2.2	3.00	345.69	8.9	
4	8193.7	5.53	345.69	8158.0	718.8	-183.3	0.00	0.00	741.4	
5	8377.9	0.00	0.00	8342.0	727.4	-185.5	3.00	180.00	750.3	8512C-24 L24 496 TOG
6	8477.0	0.30	239.53	8441.1	727.3	-185.7	0.30	239.53	750.2	
7	12249.0	0.30	239.53	12213.0	717.4	-202.5	0.00	0.00	744.1	8512C-24 L24 496 BHL
8	12333.0	0.30	239.53	12297.0	717.2	-202.9	0.00	0.00	744.0	
9	13333.0	0.30	239.53	13297.0	714.6	-207.3	0.00	0.00	742.4	



FORMATION TOP DETAILS

TVDPath	MDPath	Formation
1295.0	1298.6	A_GROOVE
2482.0	2491.2	GARDEN_GULCH / L-1
5921.0	5946.2	WASATCH_G
8273.0	8308.9	WILLIAMS_FORK
8313.0	8348.9	TOG
12197.0	12233.0	ROLLINS
12364.0	12400.0	COZZETTE
12610.0	12646.0	LOWER_SEGO
12650.0	12686.0	CORCORAN
12862.0	12898.0	SEGO



Azimuths to True North
Magnetic North: 10.44°

Magnetic Field
Strength: 52326.3nT
Dip Angle: 65.87°
Date: 5/17/2011
Model: IGRF2010

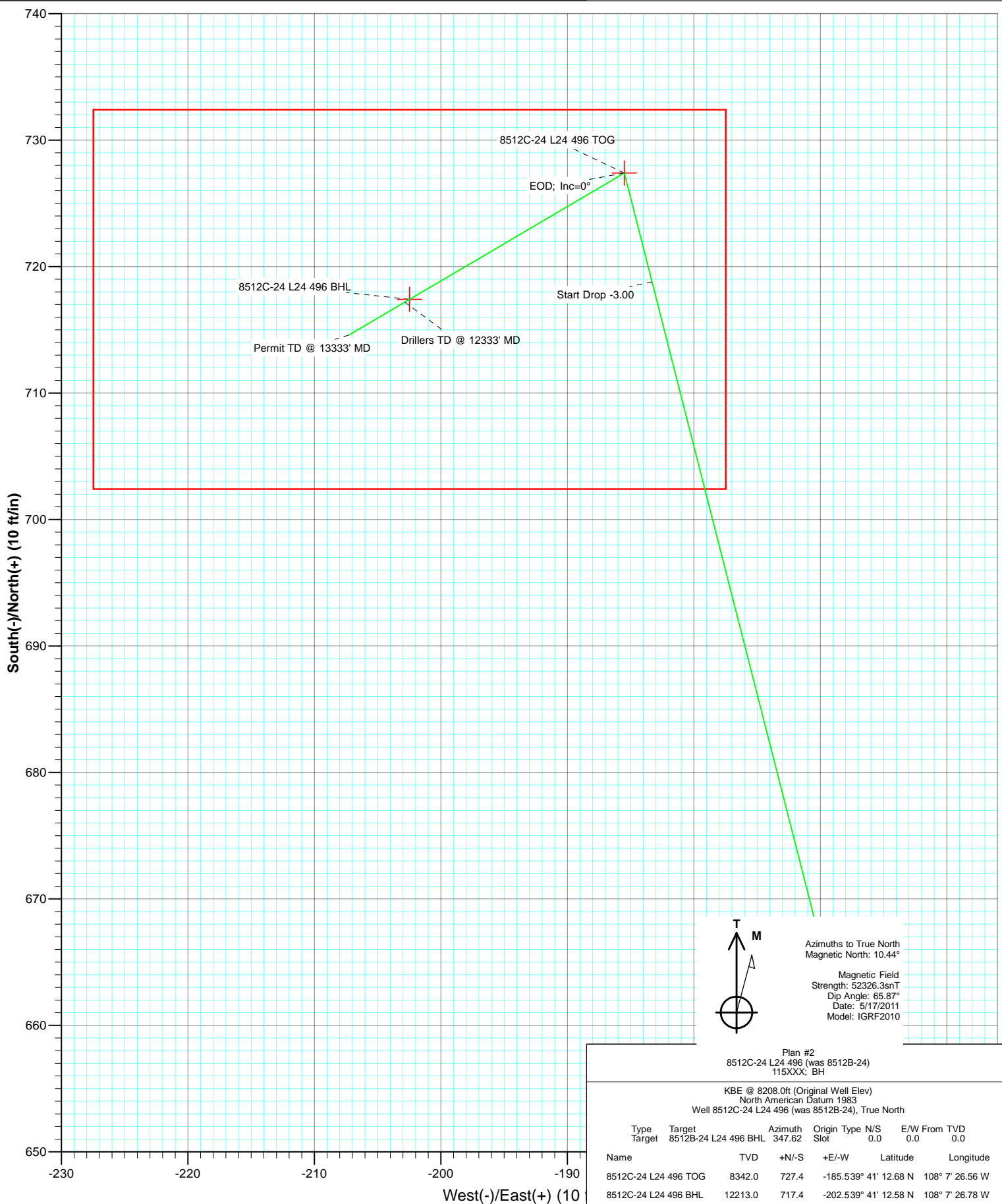
Plan #2
8512C-24 L24 496 (was 8512B-24)
115XXX; BH

KBE @ 8208.0ft (Original Well Elev)
North American Datum 1983
Well 8512C-24 L24 496 (was 8512B-24), True North

Type	Target	Target	Azimuth	Origin	Type	N/S	E/W	From	TVD
Target	8512B-24 L24 496 BHL	347.62	Slot	0.0	0.0	0.0			
Name	TVD	+N/-S	+E/-W	Latitude	Longitude				
8512C-24 L24 496 TOG	8342.0	727.4	-185.539° 41'	12.68 N	108° 7' 26.56 W				
8512C-24 L24 496 BHL	12213.0	717.4	-202.539° 41'	12.58 N	108° 7' 26.78 W				



Project: Story Gulch
 Site: L24 496
 Well: 8512C-24 L24 496 (was 8512B-24)
 Wellbore: DD
 Plan: Plan #2



Plan #2
 8512C-24 L24 496 (was 8512B-24)
 115XXX; BH

KBE @ 8208.0ft (Original Well Elev)
 North American Datum 1983
 Well 8512C-24 L24 496 (was 8512B-24), True North

Type	Target	Target	Azimuth	Origin	Type	N/S	E/W	From	TVD
Target	8512B-24	L24 496 BHL	347.62	Slot		0.0	0.0		0.0
Name	TVD	+N/-S	+E/-W	Latitude	Longitude				
8512C-24 L24 496 TOG	8342.0	727.4	-185.539° 41'	12.68 N	108° 7' 26.56 W				
8512C-24 L24 496 BHL	12213.0	717.4	-202.539° 41'	12.58 N	108° 7' 26.78 W				

Cathedral Energy Services

Planning Report

Database:	EDM 5000.1 US Multi Users DB	Local Co-ordinate Reference:	Well 8512C-24 L24 496 (was 8512B-24)
Company:	EnCana Oil & Gas (USA) Inc	TVD Reference:	KBE @ 8208.0ft (Original Well Elev)
Project:	Story Gulch	MD Reference:	KBE @ 8208.0ft (Original Well Elev)
Site:	L24 496	North Reference:	True
Well:	8512C-24 L24 496 (was 8512B-24)	Survey Calculation Method:	Minimum Curvature
Wellbore:	DD		
Design:	Plan #2		

Project	Story Gulch		
Map System:	US State Plane 1983	System Datum:	Mean Sea Level
Geo Datum:	North American Datum 1983		
Map Zone:	Colorado Central Zone		

Site		L24 496			
Site Position:		Northing:	1,685,024.52 ft	Latitude:	39° 41' 5.72 N
From:	Lat/Long	Easting:	2,261,789.15 ft	Longitude:	108° 7' 23.99 W
Position Uncertainty:	0.0 ft	Slot Radius:	13.200 in	Grid Convergence:	-1.65 °

Well	8512C-24 L24 496 (was 8512B-24)					
Well Position	+N/-S	0.0 ft	Northing:	1,685,001.69 ft	Latitude:	39° 41' 5.49 N
	+E/-W	0.0 ft	Easting:	2,261,772.85 ft	Longitude:	108° 7' 24.19 W
Position Uncertainty		0.0 ft	Wellhead Elevation:	ft	Ground Level:	8,193.0 ft

Wellbore	DD				
Magnetics	Model Name	Sample Date	Declination (°)	Dip Angle (°)	Field Strength (nT)
	IGRF2010	5/17/2011	10.44	65.87	52,326

Design	Plan #2			
Audit Notes:				
Version:	Phase:	PLAN	Tie On Depth:	0.0
Vertical Section:	Depth From (TVD) (ft)	+N/-S (ft)	+E/-W (ft)	Direction (°)
	0.0	0.0	0.0	347.62

Plan Sections										
Measured Depth (ft)	Inclination (°)	Azimuth (°)	Vertical Depth (ft)	+N/-S (ft)	+E/-W (ft)	Dogleg Rate (°/100ft)	Build Rate (°/100ft)	Turn Rate (°/100ft)	TFO (°)	Target
0.0	0.00	0.00	0.0	0.0	0.0	0.00	0.00	0.00	0.00	
400.0	0.00	0.00	400.0	0.0	0.0	0.00	0.00	0.00	0.00	
584.2	5.53	345.69	584.0	8.6	-2.2	3.00	3.00	0.00	345.69	
8,193.7	5.53	345.69	8,158.0	718.8	-183.3	0.00	0.00	0.00	0.00	
8,377.9	0.00	0.00	8,342.0	727.4	-185.5	3.00	-3.00	0.00	180.00	8512C-24 L24 496 TC
8,477.0	0.30	239.53	8,441.1	727.3	-185.7	0.30	0.30	-121.61	239.53	
12,249.0	0.30	239.53	12,213.0	717.4	-202.5	0.00	0.00	0.00	0.00	8512C-24 L24 496 B+
12,333.0	0.30	239.53	12,297.0	717.2	-202.9	0.00	0.00	0.00	0.00	
13,333.0	0.30	239.53	13,297.0	714.6	-207.3	0.00	0.00	0.00	0.00	

Cathedral Energy Services

Planning Report

Database:	EDM 5000.1 US Multi Users DB	Local Co-ordinate Reference:	Well 8512C-24 L24 496 (was 8512B-24)
Company:	EnCana Oil & Gas (USA) Inc	TVD Reference:	KBE @ 8208.0ft (Original Well Elev)
Project:	Story Gulch	MD Reference:	KBE @ 8208.0ft (Original Well Elev)
Site:	L24 496	North Reference:	True
Well:	8512C-24 L24 496 (was 8512B-24)	Survey Calculation Method:	Minimum Curvature
Wellbore:	DD		
Design:	Plan #2		

Planned Survey

Measured Depth (ft)	Inclination (°)	Azimuth (°)	Vertical Depth (ft)	+N/-S (ft)	+E/-W (ft)	Vertical Section (ft)	Dogleg Rate (°/100ft)	Build Rate (°/100ft)	Comments / Formations
0.0	0.00	0.00	0.0	0.0	0.0	0.0	0.00	0.00	
100.0	0.00	0.00	100.0	0.0	0.0	0.0	0.00	0.00	
200.0	0.00	0.00	200.0	0.0	0.0	0.0	0.00	0.00	
300.0	0.00	0.00	300.0	0.0	0.0	0.0	0.00	0.00	
400.0	0.00	0.00	400.0	0.0	0.0	0.0	0.00	0.00	KOP @ 400' MD
500.0	3.00	345.69	500.0	2.5	-0.6	2.6	3.00	3.00	
584.2	5.53	345.69	584.0	8.6	-2.2	8.9	3.00	3.00	EOB; Inc=5.53°
600.0	5.53	345.69	599.6	10.1	-2.6	10.4	0.00	0.00	
700.0	5.53	345.69	699.2	19.4	-4.9	20.0	0.00	0.00	
800.0	5.53	345.69	798.7	28.7	-7.3	29.6	0.00	0.00	
900.0	5.53	345.69	898.2	38.1	-9.7	39.3	0.00	0.00	
1,000.0	5.53	345.69	997.8	47.4	-12.1	48.9	0.00	0.00	
1,100.0	5.53	345.69	1,097.3	56.7	-14.5	58.5	0.00	0.00	
1,200.0	5.53	345.69	1,196.9	66.1	-16.8	68.1	0.00	0.00	
1,298.6	5.53	345.69	1,295.0	75.3	-19.2	77.6	0.00	0.00	A_GROOVE
1,300.0	5.53	345.69	1,296.4	75.4	-19.2	77.8	0.00	0.00	
1,400.0	5.53	345.69	1,395.9	84.7	-21.6	87.4	0.00	0.00	
1,500.0	5.53	345.69	1,495.5	94.1	-24.0	97.0	0.00	0.00	
1,600.0	5.53	345.69	1,595.0	103.4	-26.4	106.7	0.00	0.00	
1,700.0	5.53	345.69	1,694.5	112.7	-28.8	116.3	0.00	0.00	
1,800.0	5.53	345.69	1,794.1	122.1	-31.1	125.9	0.00	0.00	
1,900.0	5.53	345.69	1,893.6	131.4	-33.5	135.5	0.00	0.00	
2,000.0	5.53	345.69	1,993.1	140.7	-35.9	145.2	0.00	0.00	
2,100.0	5.53	345.69	2,092.7	150.1	-38.3	154.8	0.00	0.00	
2,200.0	5.53	345.69	2,192.2	159.4	-40.7	164.4	0.00	0.00	
2,300.0	5.53	345.69	2,291.7	168.7	-43.0	174.0	0.00	0.00	
2,400.0	5.53	345.69	2,391.3	178.1	-45.4	183.7	0.00	0.00	
2,491.2	5.53	345.69	2,482.0	186.6	-47.6	192.4	0.00	0.00	GARDEN_GULCH / L-1
2,500.0	5.53	345.69	2,490.8	187.4	-47.8	193.3	0.00	0.00	
2,600.0	5.53	345.69	2,590.3	196.7	-50.2	202.9	0.00	0.00	
2,700.0	5.53	345.69	2,689.9	206.1	-52.6	212.5	0.00	0.00	
2,800.0	5.53	345.69	2,789.4	215.4	-54.9	222.2	0.00	0.00	
2,900.0	5.53	345.69	2,888.9	224.7	-57.3	231.8	0.00	0.00	
3,000.0	5.53	345.69	2,988.5	234.1	-59.7	241.4	0.00	0.00	
3,100.0	5.53	345.69	3,088.0	243.4	-62.1	251.0	0.00	0.00	
3,200.0	5.53	345.69	3,187.6	252.7	-64.5	260.7	0.00	0.00	
3,300.0	5.53	345.69	3,287.1	262.1	-66.8	270.3	0.00	0.00	
3,400.0	5.53	345.69	3,386.6	271.4	-69.2	279.9	0.00	0.00	
3,500.0	5.53	345.69	3,486.2	280.7	-71.6	289.6	0.00	0.00	
3,600.0	5.53	345.69	3,585.7	290.1	-74.0	299.2	0.00	0.00	
3,700.0	5.53	345.69	3,685.2	299.4	-76.4	308.8	0.00	0.00	
3,800.0	5.53	345.69	3,784.8	308.7	-78.7	318.4	0.00	0.00	
3,900.0	5.53	345.69	3,884.3	318.1	-81.1	328.1	0.00	0.00	
4,000.0	5.53	345.69	3,983.8	327.4	-83.5	337.7	0.00	0.00	
4,100.0	5.53	345.69	4,083.4	336.7	-85.9	347.3	0.00	0.00	
4,200.0	5.53	345.69	4,182.9	346.1	-88.3	356.9	0.00	0.00	
4,300.0	5.53	345.69	4,282.4	355.4	-90.6	366.6	0.00	0.00	
4,400.0	5.53	345.69	4,382.0	364.7	-93.0	376.2	0.00	0.00	
4,500.0	5.53	345.69	4,481.5	374.1	-95.4	385.8	0.00	0.00	
4,600.0	5.53	345.69	4,581.0	383.4	-97.8	395.4	0.00	0.00	
4,700.0	5.53	345.69	4,680.6	392.7	-100.2	405.1	0.00	0.00	
4,800.0	5.53	345.69	4,780.1	402.1	-102.5	414.7	0.00	0.00	

Cathedral Energy Services

Planning Report

Database:	EDM 5000.1 US Multi Users DB	Local Co-ordinate Reference:	Well 8512C-24 L24 496 (was 8512B-24)
Company:	EnCana Oil & Gas (USA) Inc	TVD Reference:	KBE @ 8208.0ft (Original Well Elev)
Project:	Story Gulch	MD Reference:	KBE @ 8208.0ft (Original Well Elev)
Site:	L24 496	North Reference:	True
Well:	8512C-24 L24 496 (was 8512B-24)	Survey Calculation Method:	Minimum Curvature
Wellbore:	DD		
Design:	Plan #2		

Planned Survey									
Measured Depth (ft)	Inclination (°)	Azimuth (°)	Vertical Depth (ft)	+N/-S (ft)	+E/-W (ft)	Vertical Section (ft)	Dogleg Rate (°/100ft)	Build Rate (°/100ft)	Comments / Formations
4,900.0	5.53	345.69	4,879.6	411.4	-104.9	424.3	0.00	0.00	
5,000.0	5.53	345.69	4,979.2	420.7	-107.3	433.9	0.00	0.00	
5,100.0	5.53	345.69	5,078.7	430.1	-109.7	443.6	0.00	0.00	
5,200.0	5.53	345.69	5,178.3	439.4	-112.1	453.2	0.00	0.00	
5,300.0	5.53	345.69	5,277.8	448.7	-114.4	462.8	0.00	0.00	
5,400.0	5.53	345.69	5,377.3	458.1	-116.8	472.5	0.00	0.00	
5,500.0	5.53	345.69	5,476.9	467.4	-119.2	482.1	0.00	0.00	
5,600.0	5.53	345.69	5,576.4	476.7	-121.6	491.7	0.00	0.00	
5,700.0	5.53	345.69	5,675.9	486.1	-124.0	501.3	0.00	0.00	
5,800.0	5.53	345.69	5,775.5	495.4	-126.3	511.0	0.00	0.00	
5,900.0	5.53	345.69	5,875.0	504.7	-128.7	520.6	0.00	0.00	
5,946.2	5.53	345.69	5,921.0	509.0	-129.8	525.0	0.00	0.00	WASATCH_G
6,000.0	5.53	345.69	5,974.5	514.1	-131.1	530.2	0.00	0.00	
6,100.0	5.53	345.69	6,074.1	523.4	-133.5	539.8	0.00	0.00	
6,200.0	5.53	345.69	6,173.6	532.7	-135.9	549.5	0.00	0.00	
6,300.0	5.53	345.69	6,273.1	542.1	-138.2	559.1	0.00	0.00	
6,400.0	5.53	345.69	6,372.7	551.4	-140.6	568.7	0.00	0.00	
6,500.0	5.53	345.69	6,472.2	560.7	-143.0	578.3	0.00	0.00	
6,600.0	5.53	345.69	6,571.7	570.1	-145.4	588.0	0.00	0.00	
6,700.0	5.53	345.69	6,671.3	579.4	-147.8	597.6	0.00	0.00	
6,800.0	5.53	345.69	6,770.8	588.7	-150.1	607.2	0.00	0.00	
6,900.0	5.53	345.69	6,870.4	598.1	-152.5	616.8	0.00	0.00	
7,000.0	5.53	345.69	6,969.9	607.4	-154.9	626.5	0.00	0.00	
7,100.0	5.53	345.69	7,069.4	616.7	-157.3	636.1	0.00	0.00	
7,200.0	5.53	345.69	7,169.0	626.1	-159.7	645.7	0.00	0.00	
7,300.0	5.53	345.69	7,268.5	635.4	-162.0	655.4	0.00	0.00	
7,400.0	5.53	345.69	7,368.0	644.7	-164.4	665.0	0.00	0.00	
7,500.0	5.53	345.69	7,467.6	654.1	-166.8	674.6	0.00	0.00	
7,600.0	5.53	345.69	7,567.1	663.4	-169.2	684.2	0.00	0.00	
7,700.0	5.53	345.69	7,666.6	672.7	-171.6	693.9	0.00	0.00	
7,800.0	5.53	345.69	7,766.2	682.1	-173.9	703.5	0.00	0.00	
7,900.0	5.53	345.69	7,865.7	691.4	-176.3	713.1	0.00	0.00	
8,000.0	5.53	345.69	7,965.2	700.7	-178.7	722.7	0.00	0.00	
8,100.0	5.53	345.69	8,064.8	710.0	-181.1	732.4	0.00	0.00	
8,193.7	5.53	345.69	8,158.0	718.8	-183.3	741.4	0.00	0.00	Start Drop -3.00
8,200.0	5.34	345.69	8,164.3	719.4	-183.5	742.0	3.00	-3.00	
8,300.0	2.34	345.69	8,264.1	725.9	-185.1	748.7	3.00	-3.00	
8,308.9	2.07	345.69	8,273.0	726.2	-185.2	749.0	3.00	-3.00	WILLIAMS_FORK
8,348.9	0.87	345.69	8,313.0	727.2	-185.4	750.0	3.00	-3.00	TOG
8,377.9	0.00	0.00	8,342.0	727.4	-185.5	750.3	3.00	-3.00	EOD; Inc=0° - 8512C-24 L24 496 TOG - 8512B
8,400.0	0.07	239.53	8,364.1	727.4	-185.5	750.3	0.30	0.30	
8,477.0	0.30	239.53	8,441.1	727.3	-185.7	750.2	0.30	0.30	
8,500.0	0.30	239.53	8,464.0	727.2	-185.8	750.1	0.00	0.00	
8,600.0	0.30	239.53	8,564.0	726.9	-186.3	750.0	0.00	0.00	
8,700.0	0.30	239.53	8,664.0	726.7	-186.7	749.8	0.00	0.00	
8,800.0	0.30	239.53	8,764.0	726.4	-187.2	749.7	0.00	0.00	
8,900.0	0.30	239.53	8,864.0	726.2	-187.6	749.5	0.00	0.00	
9,000.0	0.30	239.53	8,964.0	725.9	-188.0	749.3	0.00	0.00	
9,100.0	0.30	239.53	9,064.0	725.6	-188.5	749.2	0.00	0.00	
9,200.0	0.30	239.53	9,164.0	725.4	-188.9	749.0	0.00	0.00	
9,300.0	0.30	239.53	9,264.0	725.1	-189.4	748.9	0.00	0.00	
9,400.0	0.30	239.53	9,364.0	724.9	-189.8	748.7	0.00	0.00	

Cathedral Energy Services

Planning Report

Database:	EDM 5000.1 US Multi Users DB	Local Co-ordinate Reference:	Well 8512C-24 L24 496 (was 8512B-24)
Company:	EnCana Oil & Gas (USA) Inc	TVD Reference:	KBE @ 8208.0ft (Original Well Elev)
Project:	Story Gulch	MD Reference:	KBE @ 8208.0ft (Original Well Elev)
Site:	L24 496	North Reference:	True
Well:	8512C-24 L24 496 (was 8512B-24)	Survey Calculation Method:	Minimum Curvature
Wellbore:	DD		
Design:	Plan #2		

Planned Survey

Measured Depth (ft)	Inclination (°)	Azimuth (°)	Vertical Depth (ft)	+N/-S (ft)	+E/-W (ft)	Vertical Section (ft)	Dogleg Rate (°/100ft)	Build Rate (°/100ft)	Comments / Formations
9,500.0	0.30	239.53	9,464.0	724.6	-190.3	748.5	0.00	0.00	
9,600.0	0.30	239.53	9,564.0	724.3	-190.7	748.4	0.00	0.00	
9,700.0	0.30	239.53	9,664.0	724.1	-191.2	748.2	0.00	0.00	
9,800.0	0.30	239.53	9,764.0	723.8	-191.6	748.1	0.00	0.00	
9,900.0	0.30	239.53	9,864.0	723.6	-192.0	747.9	0.00	0.00	
10,000.0	0.30	239.53	9,964.0	723.3	-192.5	747.7	0.00	0.00	
10,100.0	0.30	239.53	10,064.0	723.0	-192.9	747.6	0.00	0.00	
10,200.0	0.30	239.53	10,164.0	722.8	-193.4	747.4	0.00	0.00	
10,300.0	0.30	239.53	10,264.0	722.5	-193.8	747.3	0.00	0.00	
10,400.0	0.30	239.53	10,364.0	722.2	-194.3	747.1	0.00	0.00	
10,500.0	0.30	239.53	10,464.0	722.0	-194.7	746.9	0.00	0.00	
10,600.0	0.30	239.53	10,564.0	721.7	-195.2	746.8	0.00	0.00	
10,700.0	0.30	239.53	10,664.0	721.5	-195.6	746.6	0.00	0.00	
10,800.0	0.30	239.53	10,764.0	721.2	-196.0	746.5	0.00	0.00	
10,900.0	0.30	239.53	10,864.0	720.9	-196.5	746.3	0.00	0.00	
11,000.0	0.30	239.53	10,964.0	720.7	-196.9	746.1	0.00	0.00	
11,100.0	0.30	239.53	11,064.0	720.4	-197.4	746.0	0.00	0.00	
11,200.0	0.30	239.53	11,164.0	720.2	-197.8	745.8	0.00	0.00	
11,300.0	0.30	239.53	11,264.0	719.9	-198.3	745.7	0.00	0.00	
11,400.0	0.30	239.53	11,364.0	719.6	-198.7	745.5	0.00	0.00	
11,500.0	0.30	239.53	11,464.0	719.4	-199.1	745.3	0.00	0.00	
11,600.0	0.30	239.53	11,564.0	719.1	-199.6	745.2	0.00	0.00	
11,700.0	0.30	239.53	11,664.0	718.8	-200.0	745.0	0.00	0.00	
11,800.0	0.30	239.53	11,764.0	718.6	-200.5	744.9	0.00	0.00	
11,900.0	0.30	239.53	11,864.0	718.3	-200.9	744.7	0.00	0.00	
12,000.0	0.30	239.53	11,964.0	718.1	-201.4	744.5	0.00	0.00	
12,100.0	0.30	239.53	12,064.0	717.8	-201.8	744.4	0.00	0.00	
12,200.0	0.30	239.53	12,164.0	717.5	-202.3	744.2	0.00	0.00	
12,233.0	0.30	239.53	12,197.0	717.5	-202.4	744.2	0.00	0.00	ROLLINS
12,248.5	0.30	239.53	12,212.5	717.4	-202.5	744.1	0.00	0.00	8512B-24 L24 496 BHL
12,249.0	0.30	239.53	12,213.0	717.4	-202.5	744.1	0.00	0.00	8512C-24 L24 496 BHL
12,300.0	0.30	239.53	12,264.0	717.3	-202.7	744.1	0.00	0.00	
12,333.0	0.30	239.53	12,297.0	717.2	-202.9	744.0	0.00	0.00	Drillers TD @ 12333' MD
12,400.0	0.30	239.53	12,364.0	717.0	-203.1	743.9	0.00	0.00	COZZETTE
12,500.0	0.30	239.53	12,464.0	716.8	-203.6	743.7	0.00	0.00	
12,600.0	0.30	239.53	12,564.0	716.5	-204.0	743.6	0.00	0.00	
12,646.0	0.30	239.53	12,610.0	716.4	-204.2	743.5	0.00	0.00	LOWER_SEGO
12,686.0	0.30	239.53	12,650.0	716.3	-204.4	743.4	0.00	0.00	CORCORAN
12,700.0	0.30	239.53	12,664.0	716.2	-204.5	743.4	0.00	0.00	
12,800.0	0.30	239.53	12,764.0	716.0	-204.9	743.3	0.00	0.00	
12,898.0	0.30	239.53	12,862.0	715.7	-205.4	743.1	0.00	0.00	SEGO
12,900.0	0.30	239.53	12,864.0	715.7	-205.4	743.1	0.00	0.00	
13,000.0	0.30	239.53	12,964.0	715.5	-205.8	742.9	0.00	0.00	
13,100.0	0.30	239.53	13,064.0	715.2	-206.3	742.8	0.00	0.00	
13,200.0	0.30	239.53	13,164.0	714.9	-206.7	742.6	0.00	0.00	
13,300.0	0.30	239.53	13,264.0	714.7	-207.1	742.5	0.00	0.00	
13,333.0	0.30	239.53	13,297.0	714.6	-207.3	742.4	0.00	0.00	Permit TD @ 13333' MD

Cathedral Energy Services

Planning Report

Database:	EDM 5000.1 US Multi Users DB	Local Co-ordinate Reference:	Well 8512C-24 L24 496 (was 8512B-24)
Company:	EnCana Oil & Gas (USA) Inc	TVD Reference:	KBE @ 8208.0ft (Original Well Elev)
Project:	Story Gulch	MD Reference:	KBE @ 8208.0ft (Original Well Elev)
Site:	L24 496	North Reference:	True
Well:	8512C-24 L24 496 (was 8512B-24)	Survey Calculation Method:	Minimum Curvature
Wellbore:	DD		
Design:	Plan #2		

Targets									
Target Name									
- hit/miss target	Dip Angle	Dip Dir.	TVD	+N/-S	+E/-W	Northing	Easting	Latitude	Longitude
- Shape	(°)	(°)	(ft)	(ft)	(ft)	(ft)	(ft)		
8512C-24 L24 496 TOG - plan hits target center - Point	0.00	0.00	8,342.0	727.4	-185.5	1,685,734.15	2,261,608.43	39° 41' 12.68 N	108° 7' 26.56 W
8512B-24 L24 496 TOG - plan misses target center by 201.3ft at 8377.9ft MD (8342.0 TVD, 727.4 N, -185.5 E) - Point	0.00	0.00	8,342.0	928.7	-184.7	1,685,935.36	2,261,615.04	39° 41' 14.67 N	108° 7' 26.55 W
8512B-24 L24 496 BHL - plan misses target center by 201.4ft at 12248.5ft MD (12212.5 TVD, 717.4 N, -202.5 E) - Rectangle (sides W30.0 H50.0 D0.0)	0.00	0.00	12,213.0	918.8	-201.7	1,685,925.90	2,261,597.77	39° 41' 14.57 N	108° 7' 26.77 W
8512C-24 L24 496 BHL - plan hits target center - Rectangle (sides W30.0 H50.0 D0.0)	0.00	0.00	12,213.0	717.4	-202.5	1,685,724.65	2,261,591.17	39° 41' 12.58 N	108° 7' 26.78 W

Formations						
Measured Depth	Vertical Depth	Name	Lithology	Dip	Dip Direction	
(ft)	(ft)			(°)	(°)	
1,298.6	1,295.0	A_GROOVE				
2,491.2	2,482.0	GARDEN_GULCH / L-1				
5,946.2	5,921.0	WASATCH_G				
8,308.9	8,273.0	WILLIAMS_FORK				
8,348.9	8,313.0	TOG				
12,233.0	12,197.0	ROLLINS				
12,400.0	12,364.0	COZZETTE				
12,646.0	12,610.0	LOWER_SEGO				
12,686.0	12,650.0	CORCORAN				
12,898.0	12,862.0	SEGO				

Plan Annotations					
Measured Depth	Vertical Depth	Local Coordinates			
(ft)	(ft)	+N/-S (ft)	+E/-W (ft)	Comment	
400.0	400.0	0.0	0.0	KOP @ 400' MD	
584.2	584.0	8.6	-2.2	EOB; Inc=5.53°	
8,193.7	8,158.0	718.8	-183.3	Start Drop -3.00	
8,377.9	8,342.0	727.4	-185.5	EOD; Inc=0°	
12,333.0	12,297.0	717.2	-202.9	Drillers TD @ 12333' MD	
13,333.0	13,297.0	714.6	-207.3	Permit TD @ 13333' MD	