

Encana OIL & GAS (USA) INC.
WELL PAD L24 496
 LOCATED IN GARFIELD COUNTY, COLORADO
 SECTION 24, T4S, R96W, 6th P.M.

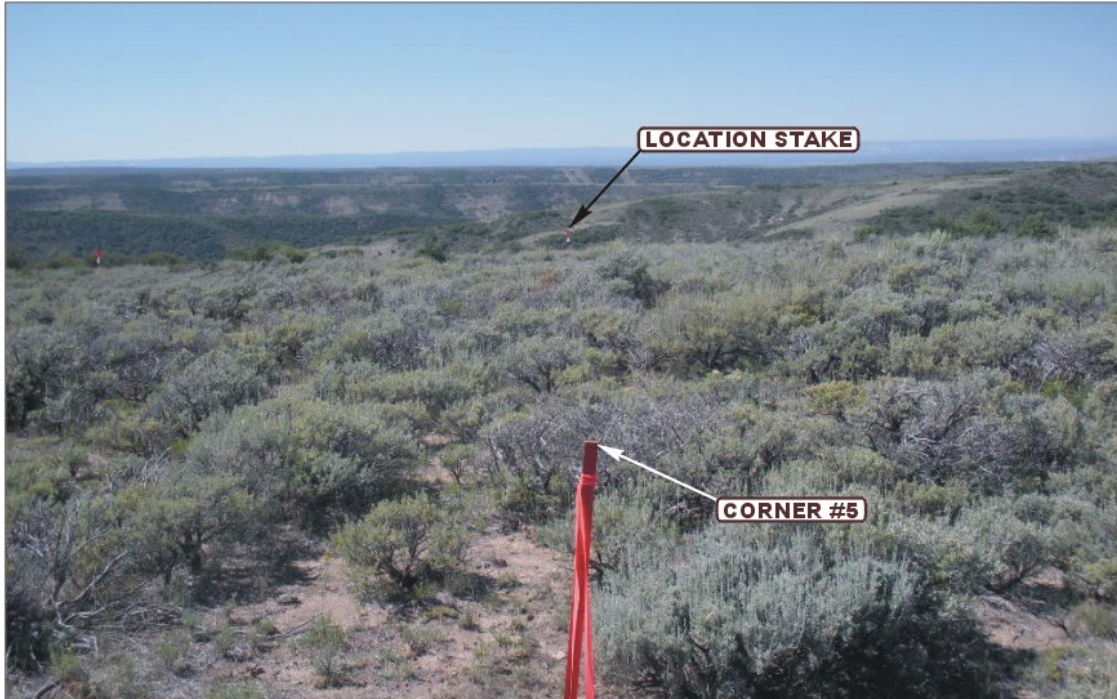


PHOTO: VIEW FROM CORNER #5 TO LOCATION STAKE

CAMERA ANGLE: NORTHWESTERLY



PHOTO: VIEW FROM BEGINNING OF PROPOSED ACCESS

CAMERA ANGLE: NORTHWESTERLY



UELS Uintah Engineering & Land Surveying
 85 South 200 East Vernal, Utah 84078
 435-789-1017 uels@uelsinc.com

LOCATION PHOTOS	10	21	10	PHOTO P1
TAKEN BY: B.J.	MONTH	DAY	YEAR	
DRAWN BY: J.L.G.	REVISED: 06-09-11			

Encana OIL & GAS (USA) INC.
WELL PAD L24 496
 LOCATED IN GARFIELD COUNTY, COLORADO
 SECTION 24, T4S, R96W, 6th P.M.

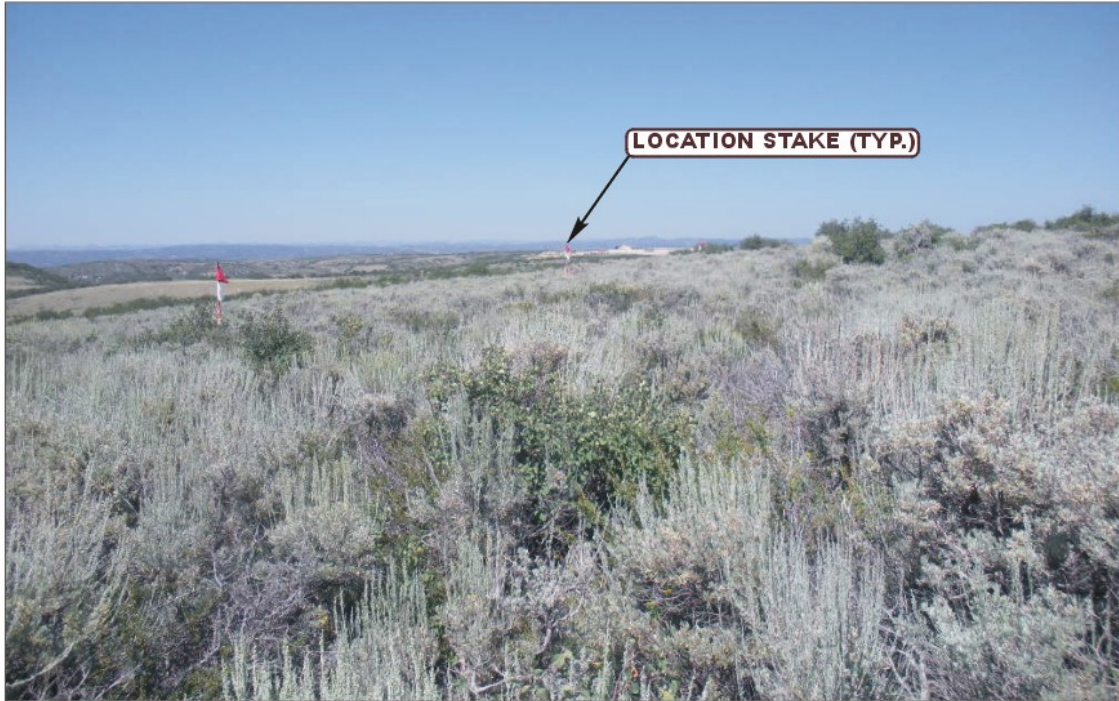


PHOTO: VIEW OF LOCATION STAKES

CAMERA ANGLE: NORTHERLY



PHOTO: VIEW OF LOCATION STAKES

CAMERA ANGLE: SOUTHERLY



UELS Uintah Engineering & Land Surveying
 85 South 200 East Vernal, Utah 84078
 435-789-1017 uels@uelsinc.com

LOCATION PHOTOS	10	21	10	PHOTO P2
	MONTH	DAY	YEAR	
TAKEN BY: B.J.	DRAWN BY: J.L.G.		REVISED: 06-09-11	

Encana OIL & GAS (USA) INC.
WELL PAD L24 496
 LOCATED IN GARFIELD COUNTY, COLORADO
 SECTION 24, T4S, R96W, 6th P.M.



PHOTO: VIEW OF LOCATION STAKES

CAMERA ANGLE: EASTERLY



PHOTO: VIEW OF LOCATION STAKES

CAMERA ANGLE: WESTERLY



UELS Uintah Engineering & Land Surveying
 85 South 200 East Vernal, Utah 84078
 435-789-1017 uels@uelsinc.com

LOCATION PHOTOS

10	21	10
MONTH	DAY	YEAR

PHOTO
P3

TAKEN BY: B.J. DRAWN BY: J.L.G. REVISED: 06-09-11

- Since 1964 -