

Detention Pond

SCALE: 1" = 60'
DATE: 10-27-10
DRAWN BY: D.R.B.
Rev: 06-08-11 D.R.B.
Rev: 10-10-11 D.R.B.

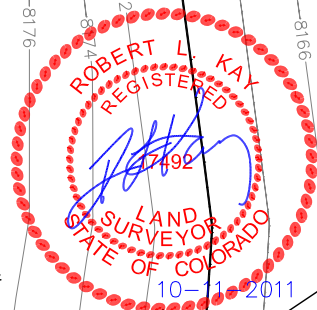
Encana OIL & GAS (USA) INC.

CONSTRUCTION LAYOUT FOR

WELL PAD L24 496
SECTION 24, T4S, R96W, 6th P.M.
NW 1/4 SW 1/4

SCALE

Sheet 3 of 11



2.65 Ac. to Deten. Pond #1
4,000 cu.ft./Ac. Pad
Vol. = 10,600 cu.ft.
L = 70', W=40', D=8'

NOTE:
Flare Pit is to
be located a min.
of 100' from the
Well Head.

SWMP LEGEND:
ECB - EROSION CONTROL
BLANKET
LSD - LEVEL SPREADER
SCE - STABILIZED
CONSTRUCTION
ENTRANCE
SedR - SEDIMENT
RESERVOIR
SL - SLASH
ST - SEDIMENT TRAP
T - TERRACING
VB - TOE BERM
W - VEGETATED BUFFER
W - WATTLE

LEGEND:
St - Septic Tank
G - Generator
WT - Water Tank

LEGEND:
1 - OVERFLOW
2 - SEWER TANK
3 - LIFT STATION
4 - SEWER LINE
5 - WATER TANK
6 - FREEZER
7 - STORAGE
8 - GENERATOR
9 - FUEL
10 - TRANSFORMER

1.47 Ac. to Deten. Pond #3
4,000 cu.ft./Ac. Pad
Vol. = 5,880 cu.ft.
L = 65', W=35', D=6'

0.29 Ac. to Sed. Res. #2
3,600 cu.ft./Ac. Drainage
Vol. = 1,044 cu.ft.
L = 44', W=15', D=4'

0.30 Ac. to Sed. Res. #3
3,600 cu.ft./Ac. Drainage
Vol. = 1,080 cu.ft.
L = 45', W=15', D=4'

1.52 Ac. to Deten. Pond #2
4,000 cu.ft./Ac. Pad
Vol. = 6,080 cu.ft.
L = 55', W=30', D=8'

Elev. Ungraded Ground At 8505D-24 Loc. Stake = 8184.9'
FINISHED GRADE ELEV. AT 8505D-24 LOC. STAKE = 8180.0'

UINTAH ENGINEERING & LAND SURVEYING
85 So. 200 East * Vernal, Utah 84078 * (435) 789-1017

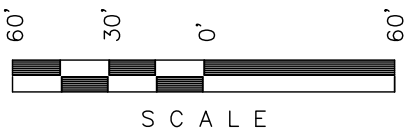
Encana OIL & GAS (USA) INC.

PRE-CONSTRUCTION LAYOUT FOR

WELL PAD L24 496

SECTION 24, T4S, R96W, 6th P.M.

NW 1/4 SW 1/4



SCALE

Sheet 3a of 11

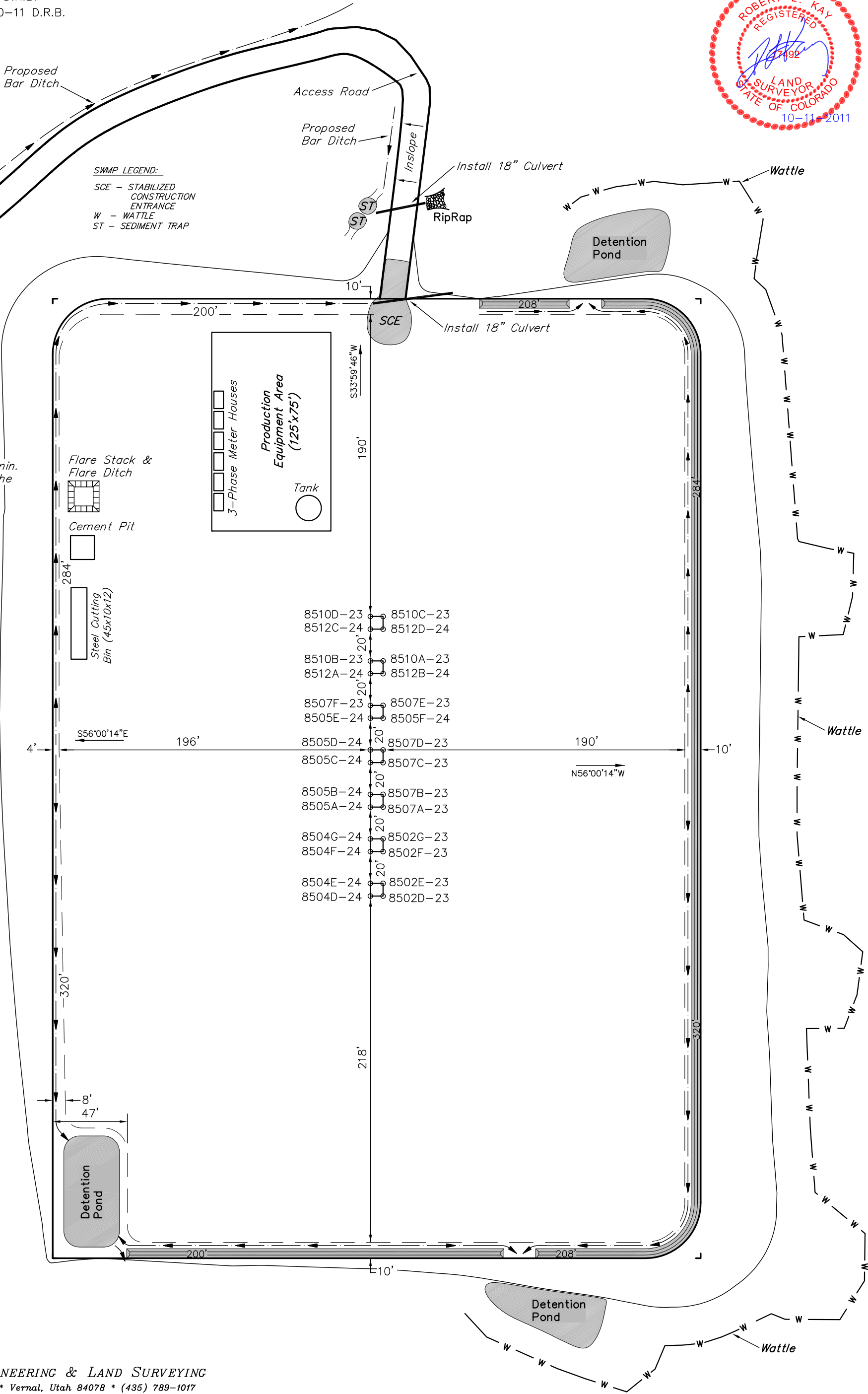
SCALE: 1" = 60'
DATE: 06-08-11
DRAWN BY: D.R.B.
Revised: 10-10-11 D.R.B.



SWMP LEGEND:

SCE - STABILIZED
CONSTRUCTION
ENTRANCE
W - WATTLE
ST - SEDIMENT TRAP

NOTE:
Flare Pit is to
be located a min.
of 100' from the
Well Head.



Encana OIL & GAS (USA) INC.
CONSTRUCTION LAYOUT CROSS SECTION FOR
WELL PAD L24 496
SECTION 24, T4S, R96W, 6th P.M.
NW 1/4 SW 1/4

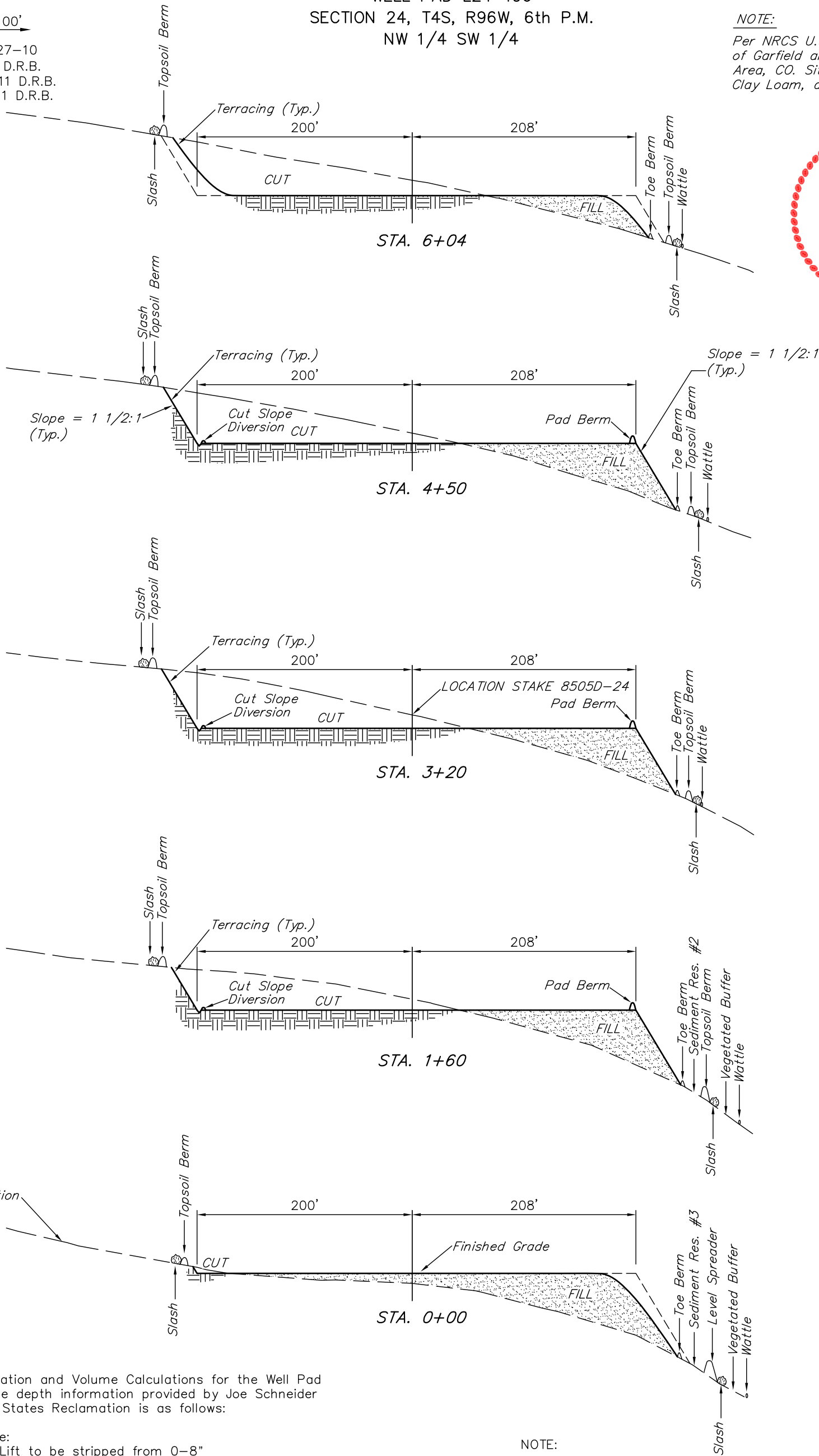
Sheet 4 of 11

1" = 40'
X-Section
Scale
1" = 100'

DATE: 10-27-10
DRAWN BY: D.R.B.
Rev: 05-20-11 D.R.B.
Rev: 10-10-11 D.R.B.

NOTE:

Per NRCS U.S. Soil Survey for Parts
of Garfield and Mesa Counties, Rifle
Area, CO. Site has Channery, Sandy
Clay Loam, and Unweathered Bedrock.



Topsoil Delineation and Volume Calculations for the Well Pad
L24 496. The depth information provided by Joe Schneider
with Western States Reclamation is as follows:

In Soil Sample:
Topsoil -1st Lift to be stripped from 0-8"
Subsoil -2nd Lift to be stripped from 8"-12"

Topsoil depths were taken as that the sum total of the
topsoil and subsoil depths in determining the topsoil volume.

NOTE:

Topsoil should not be
Stripped Below Finished
Grade on Substructure Area.

APPROXIMATE YARDAGES

(12") Topsoil Stripping = 11,390 Cu. Yds.
Remaining Location = 49,970 Cu. Yds.

TOTAL CUT = 61,360 CU.YDS.
FILL = 49,970 CU.YDS.

EXCESS MATERIAL = 11,390 Cu. Yds.
Topsoil = 11,390 Cu. Yds.

EXCESS UNBALANCE = 0 Cu. Yds.
(After Interim Rehabilitation)

* NOTE:

FILL QUANTITY INCLUDES
5% FOR COMPACTION

UINTAH ENGINEERING & LAND SURVEYING
85 So. 200 East * Vernal, Utah 84078 * (435) 789-1017

Encana OIL & GAS (USA) INC.

TYPICAL RIG LAYOUT FOR

WELL PAD L24 496

SECTION 24, T4S, R96W, 6th P.M.

NW 1/4 SW 1/4

60' 30' 0' 60'



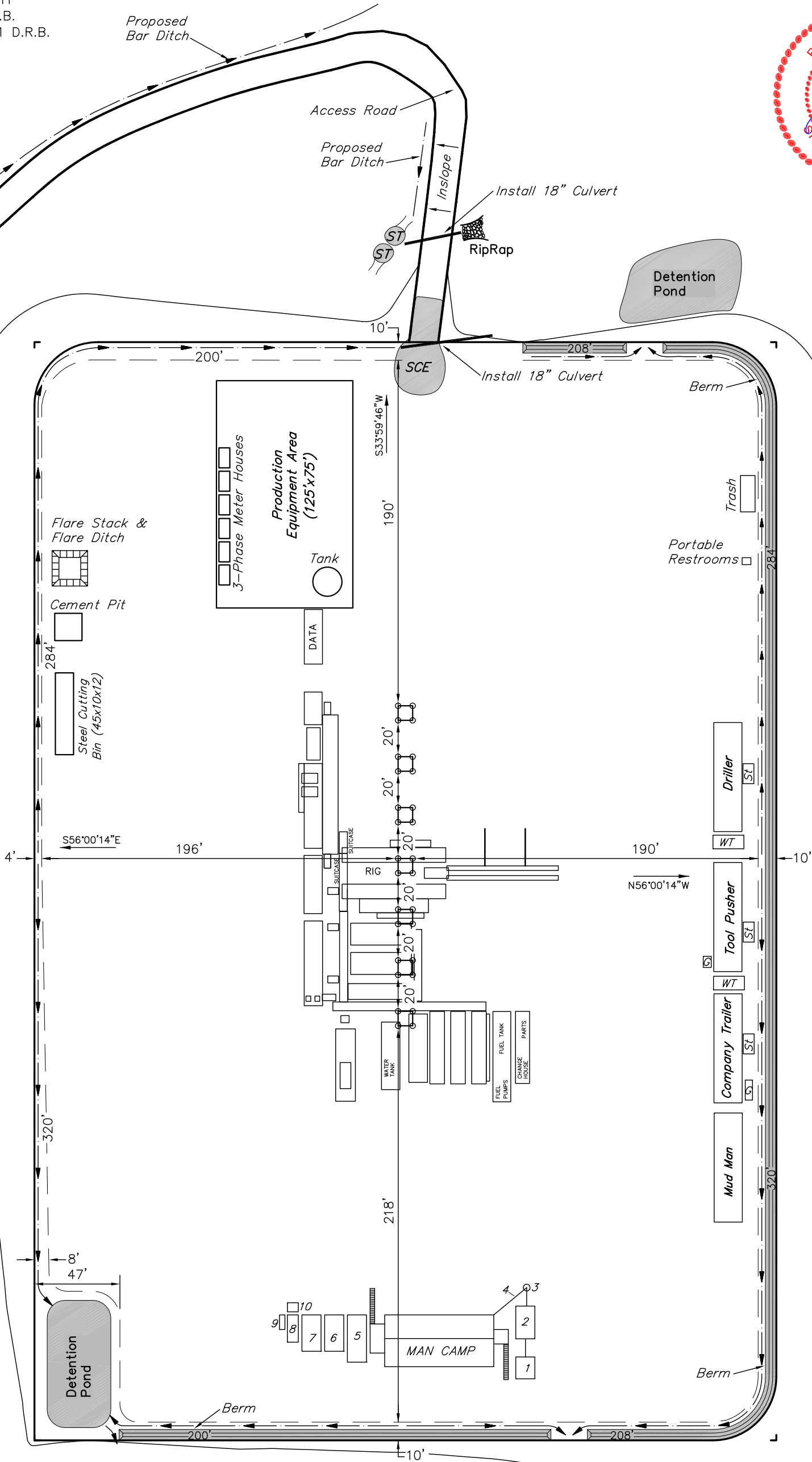
SCALE

Sheet 5 of 11

SCALE: 1" = 60'
DATE: 06-08-11
DRAWN BY: D.R.B.
Revised: 10-10-11 D.R.B.



NOTE:
Flare Pit is to
be located a min.
of 100' from the
Well Head.



LEGEND:
ST - Septic Tank
G - Generator
WT - Water Tank

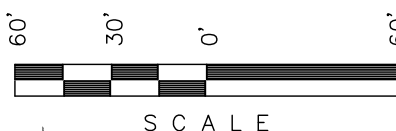
LEGEND:
1 - OVERFLOW
2 - SEWER TANK
3 - LIFT STATION
4 - SEWER LINE
5 - WATER TANK
6 - FREEZER
7 - STORAGE
8 - GENERATOR
9 - FUEL
10 - TRANSFORMER

SWMP LEGEND:
SCE - STABILIZED
CONSTRUCTION
ENTRANCE
W - WATTLE
ST - SEDIMENT TRAP

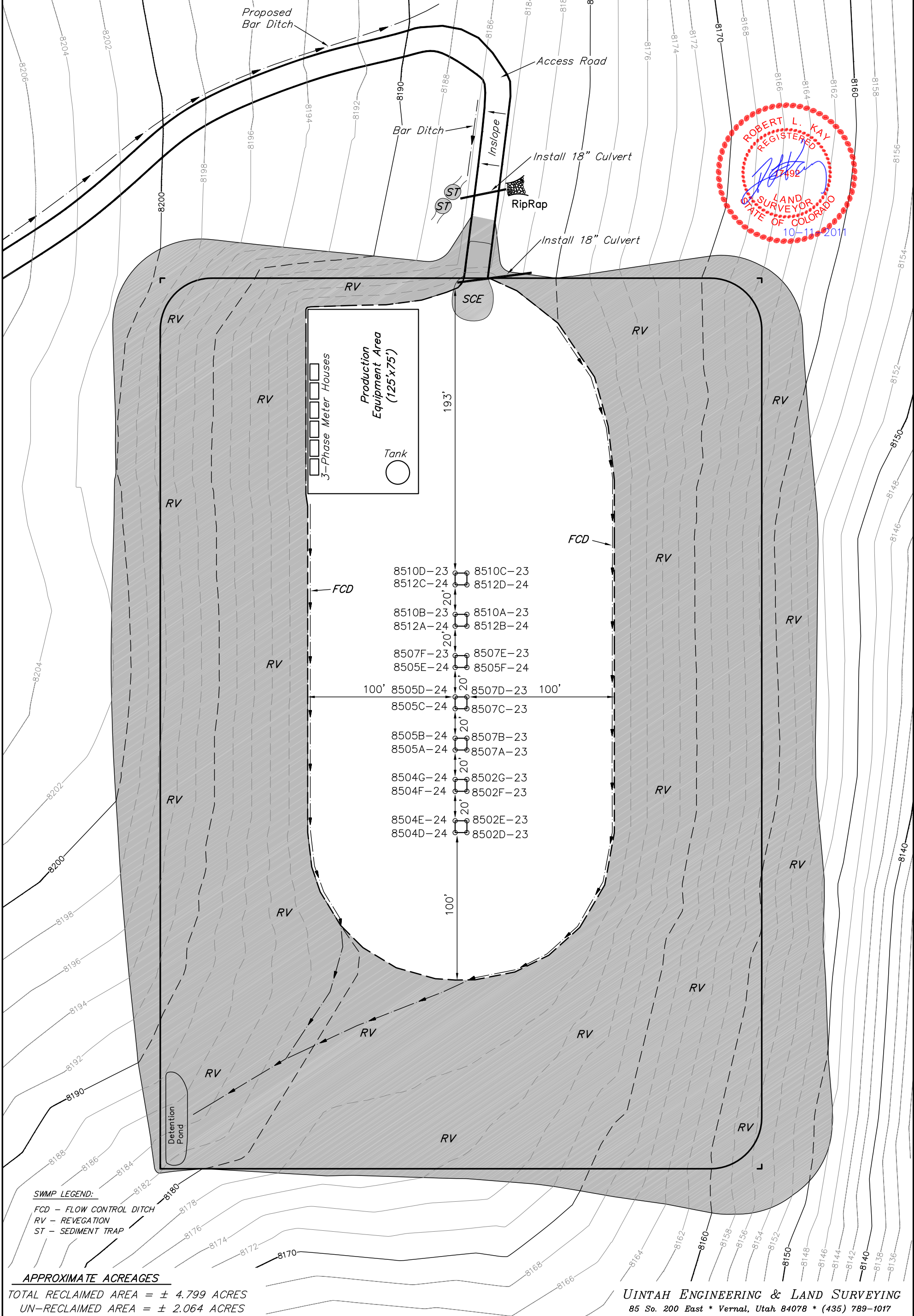
SCALE: 1" = 60'
DATE: 06-08-11
DRAWN BY: D.R.B.
Revised: 10-10-11 D.R.B.

Encana OIL & GAS (USA) INC.

PRODUCTION SCHEMATIC FOR
WELL PAD L24 496
SECTION 24, T4S, R96W, 6th P.M.
NW 1/4 SW 1/4



Sheet 6 of 11



SWMP LEGEND:
FCD - FLOW CONTROL DITCH
RV - REVEGATION
ST - SEDIMENT TRAP

APPROXIMATE ACREAGES

TOTAL RECLAIMED AREA = ± 4.799 ACRES
UN-RECLAIMED AREA = ± 2.064 ACRES

UINTAH ENGINEERING & LAND SURVEYING
85 So. 200 East * Vernal, Utah 84078 * (435) 789-1017

Encana OIL & GAS (USA) INC.

SURFACE DISTURBANCE AREA FOR

WELL PAD L24 496

SECTION 24, T4S, R96W, 6th P.M.

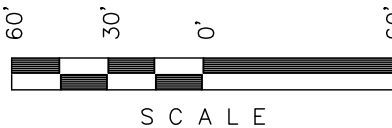
NW 1/4 SW 1/4

SCALE: 1" = 60'

DATE: 06-08-11

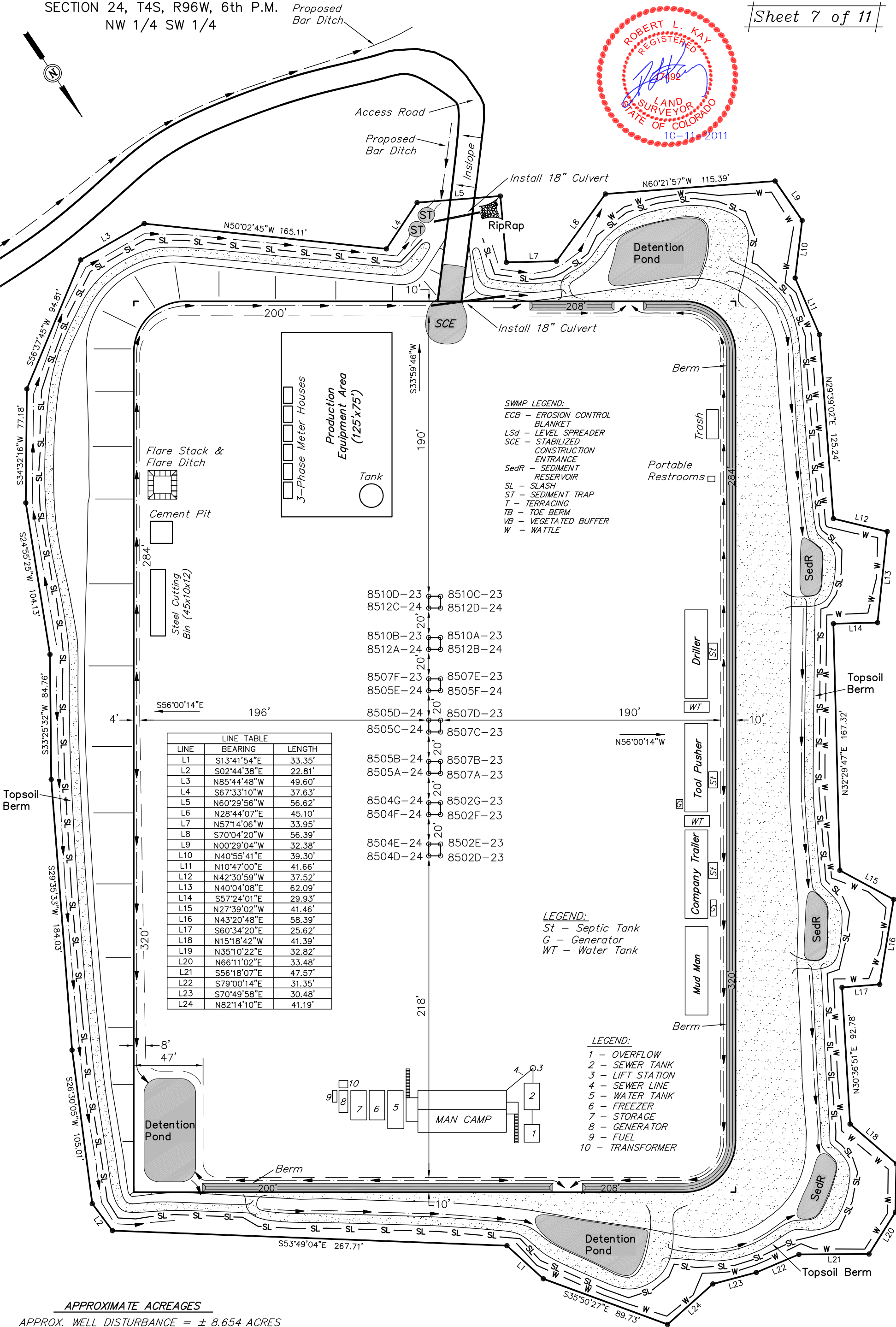
DRAWN BY: D.R.B.

Revised: 10-10-11 D.R.B.



S C A L E

Sheet 7 of 11



APPROXIMATE ACREAGES

APPROX. WELL DISTURBANCE = ± 8.654 ACRES

ACCESS ROAD DISTURBANCE = ± 0.937 ACRES

TOTAL = ± 9.591 ACRES

UINTAH ENGINEERING & LAND SURVEYING

85 So. 200 East * Vernal, Utah 84078 * (435) 789-1017