

Company	Pioneer Natural Resources	Company	Pioneer Natural Resources
Well	Haught 42-30	Well	Haught 42-30
Field	Purgatoire River	Field	Purgatoire River
County	Las Animas	County	Las Animas
State	Colorado	State	Colorado
Location:	APL # : 05 071 09710 00	Other Services	CDNL
Permanent Datum	2394' FNL & 1037' FEL	Elevation	
Log Measured From	Kelly Bushing 9' AGL	K.B. 7835'	
Drilling Measured From	Kelly Bushing	D.F. -----	
		G.L. 7826'	
Date	7-4-11		
Run Number	One		
Depth Driller	2905'		
Depth Logger	2886'		
Bottom Logged Interval	2884'		
Top Log Interval	Surface Casing		
Casing Driller	8 5/8" @ 392'		
Casing Logger	388'		
Bit Size	7 7/8"		
Type Fluid in Hole	Water		
Density / Viscosity	///		
pH / Fluid Loss	///		
Source of Sample	///		
Rm @ Meas. Temp	///		
Rmf @ Meas. Temp	///		
Rmc @ Meas. Temp	///		
Source of Rmf / Rmc	///		
Rm @ BHT	///		
Time Circulation Stopped	10:30 P.M.		
Time Logger on Bottom	5:30 A.M.		
Maximum Recorded Temperature	90 DEG F		
Equipment Number	T590		
Location	Trinidad		
Recorded By	C. Sisneros		
Witnessed By	Mr. Derrick Berry		

<<< Fold Here >>>

All interpretations are opinions based on inferences from electrical or other measurements and we cannot and do not guarantee the accuracy or correctness of any interpretation, and we shall not, except in the case of gross or willful negligence on our part, be liable or responsible for any loss, costs, damages, or expenses incurred or sustained by anyone resulting from any interpretation made by any of our officers, agents or employees. These interpretations are also subject to our general terms and conditions set out in our current Price Schedule.

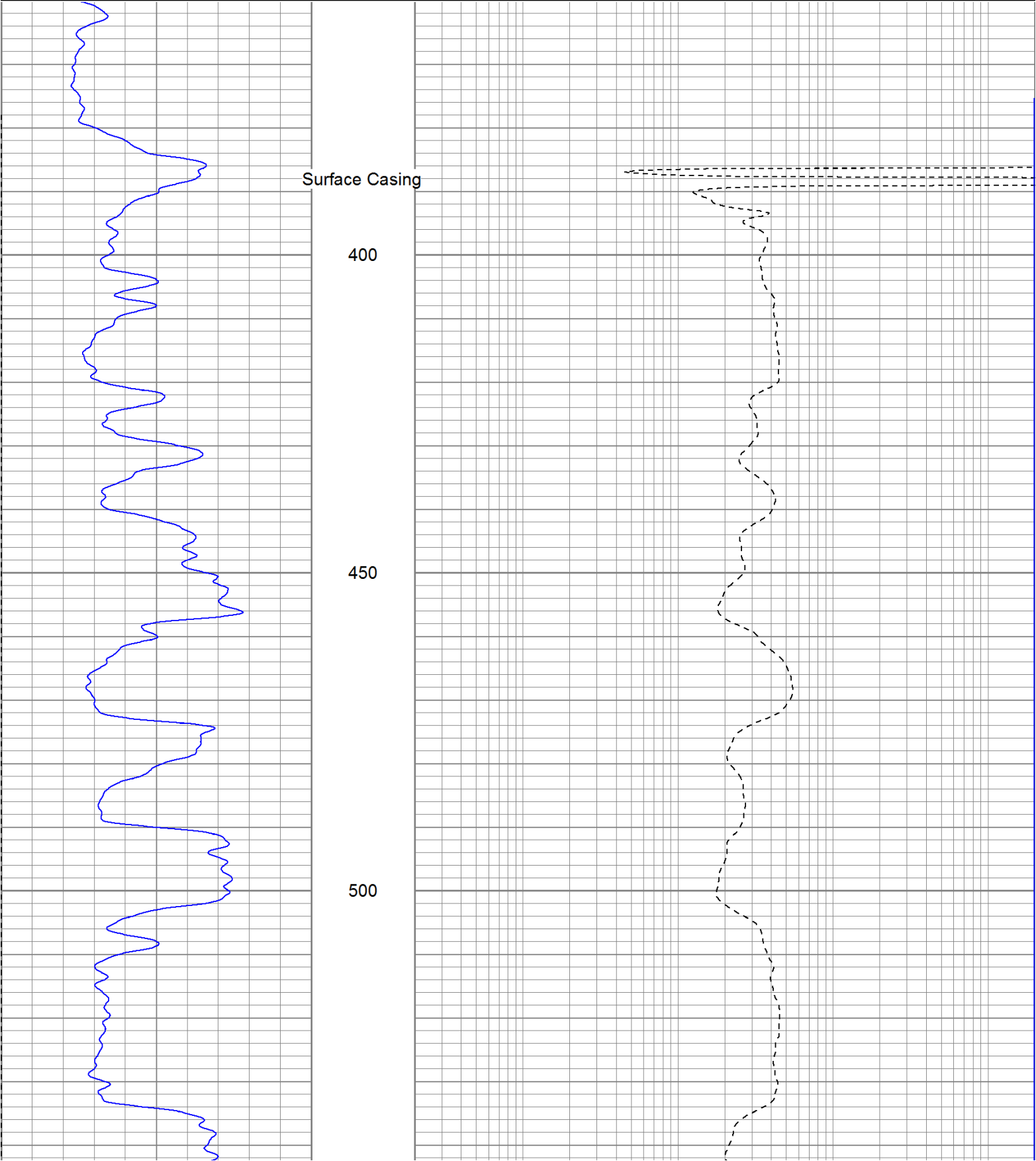
Comments

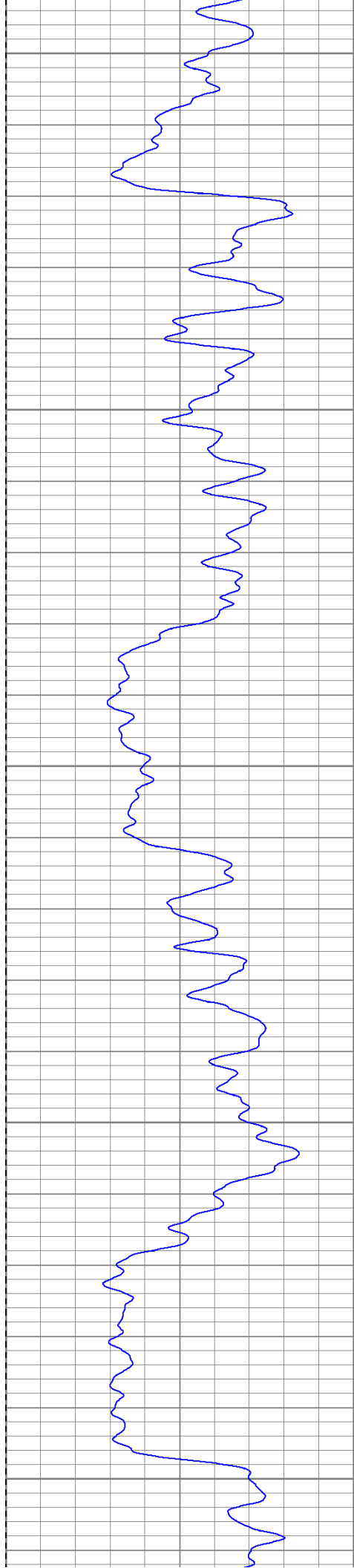
Directions:

Wet Canyon, San Pablo, @ Y at Dude canyon stay right, fourth left to location.

Database File:	haught.db
Dataset Pathname:	pass2.2
Presentation Format:	iel
Dataset Creation:	Tue Jul 05 07:59:04 2011 by Calc Open-Cased 110302
Charted by:	Depth in Feet scaled 1:240

0	GR (GAPI)	200	0.2	DIR (Ohm-m)	2000
-200	SP (mV)	0	0.2	SN (Ohm-m)	2000





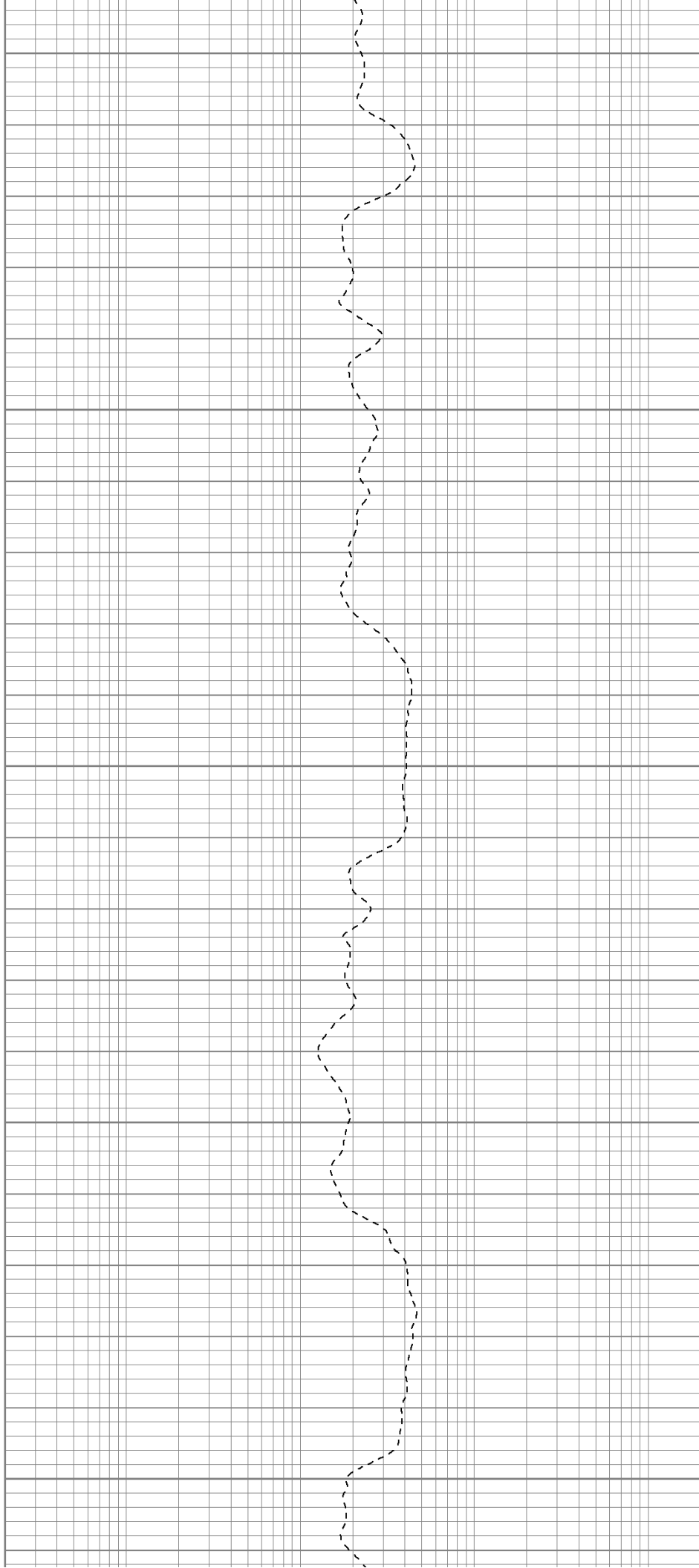
550

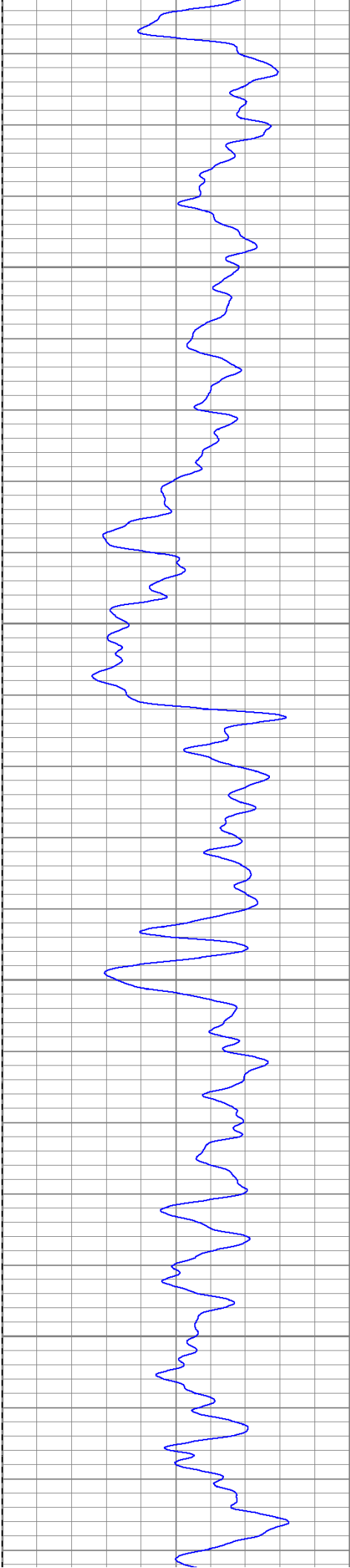
600

650

700

750



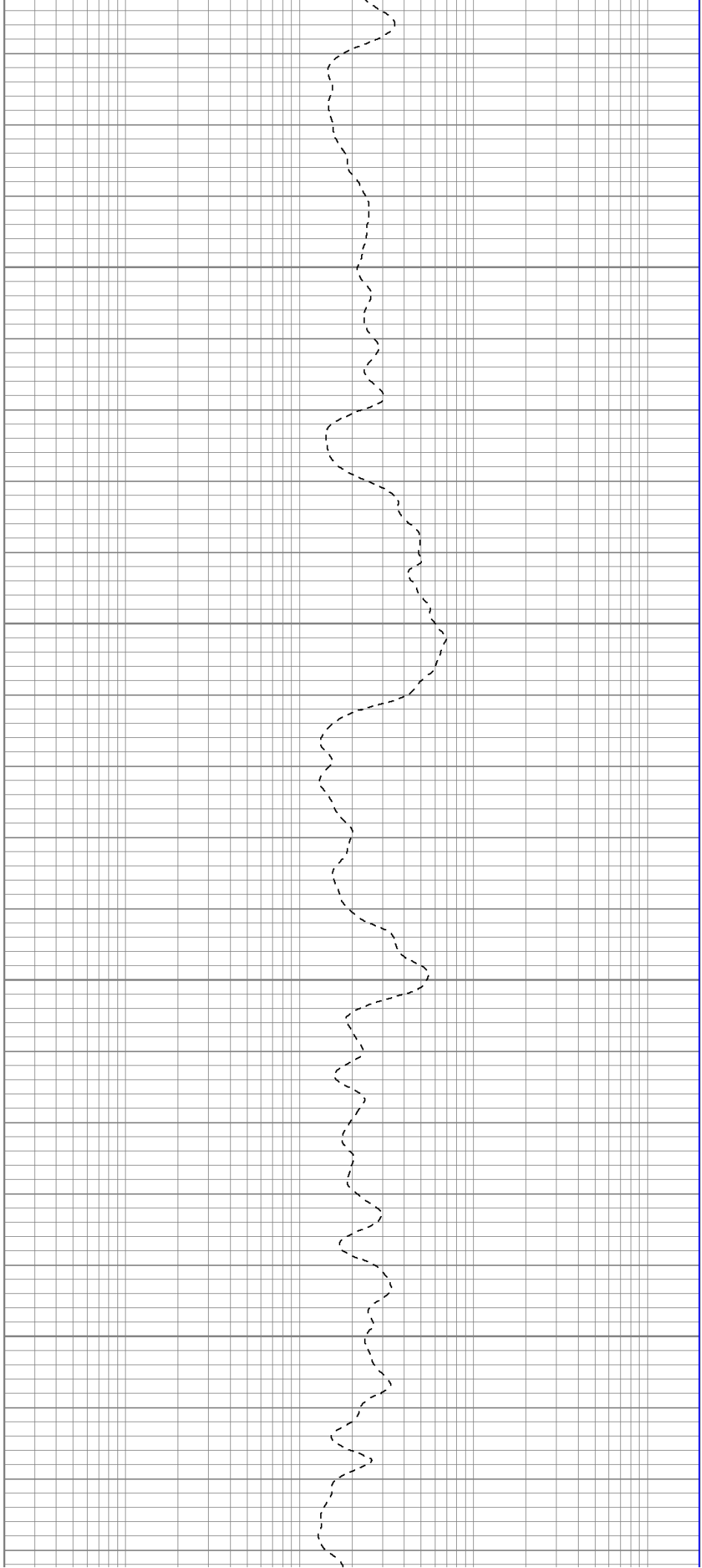


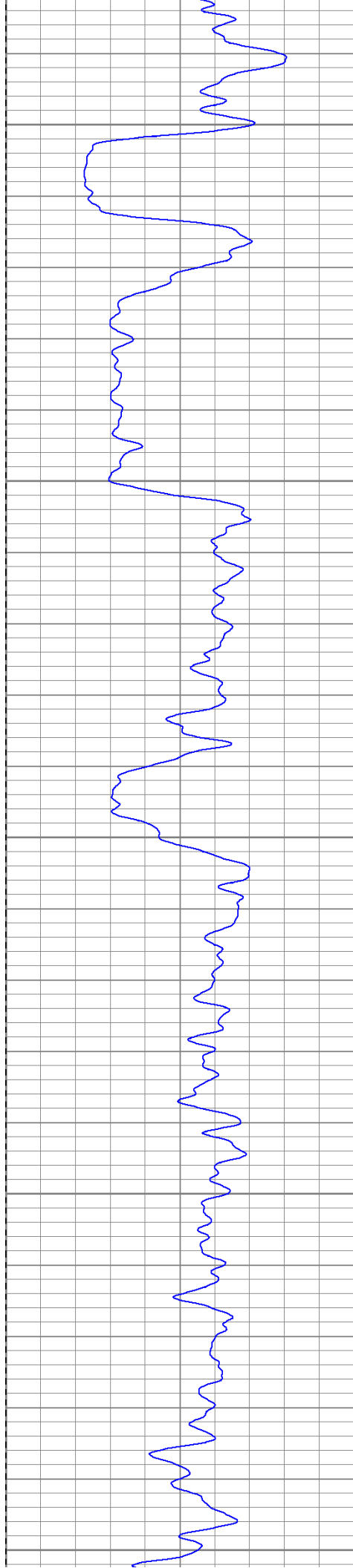
800

850

900

950





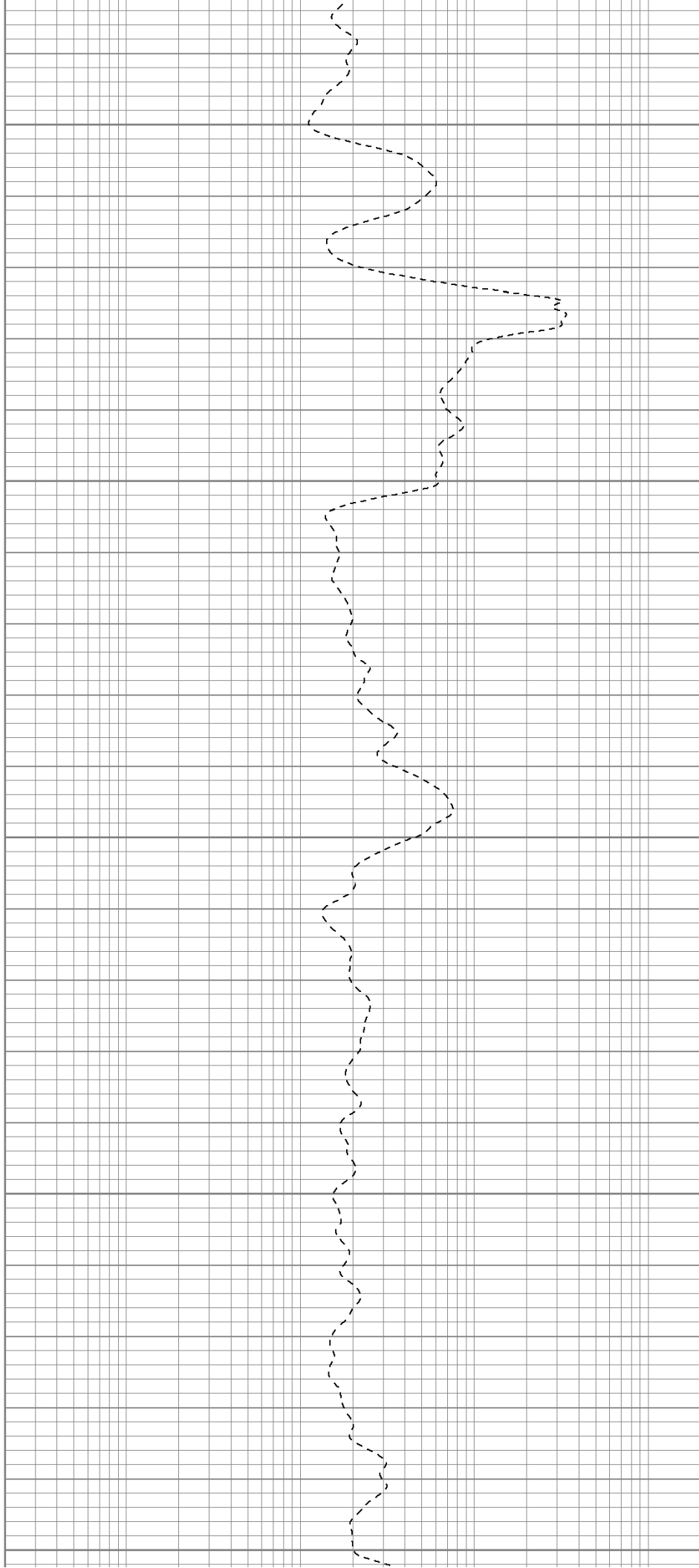
1000

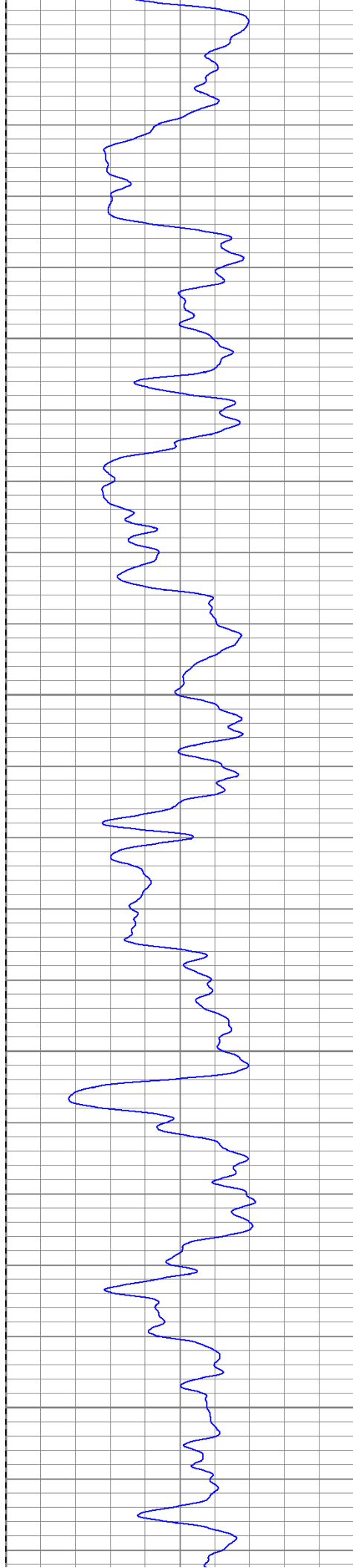
1050

1100

1150

1200



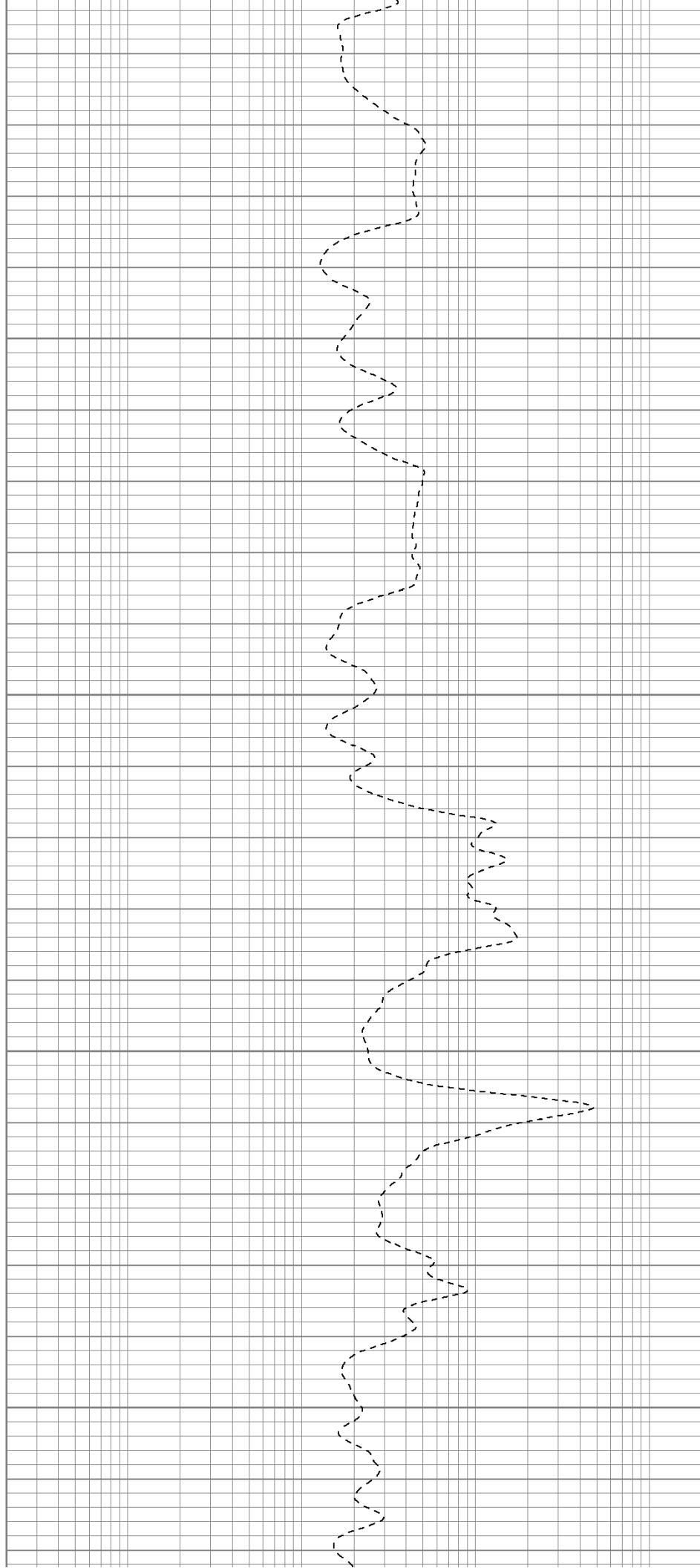


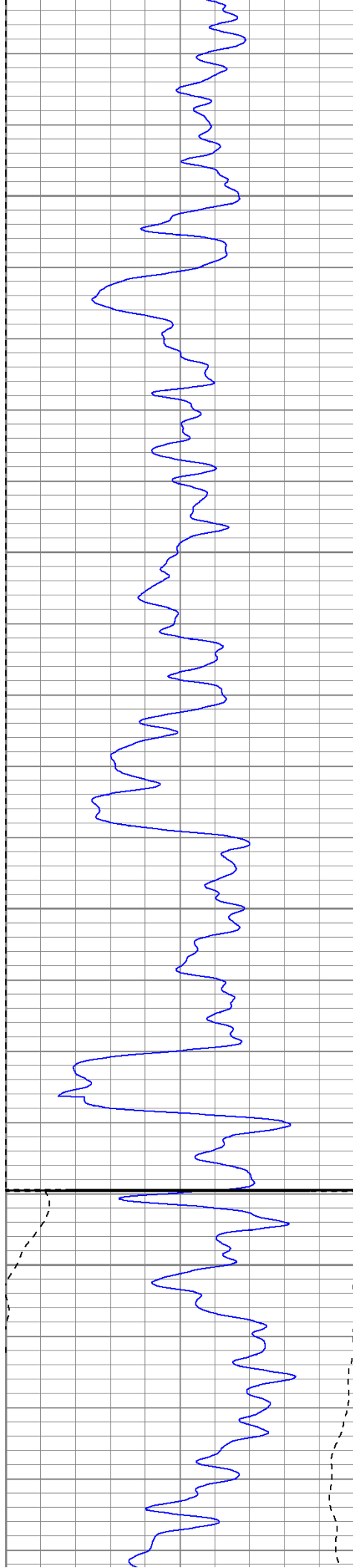
1250

1300

1350

1400





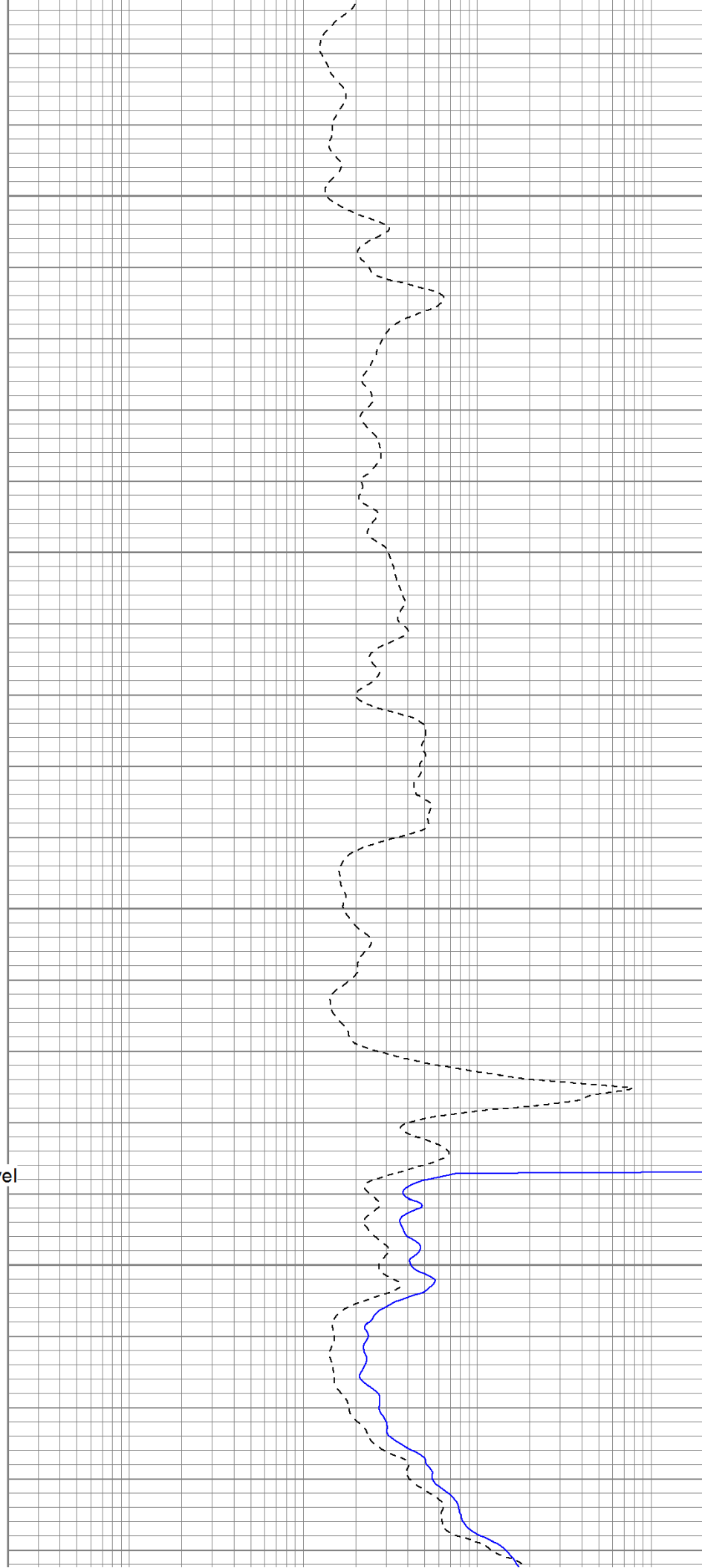
1450

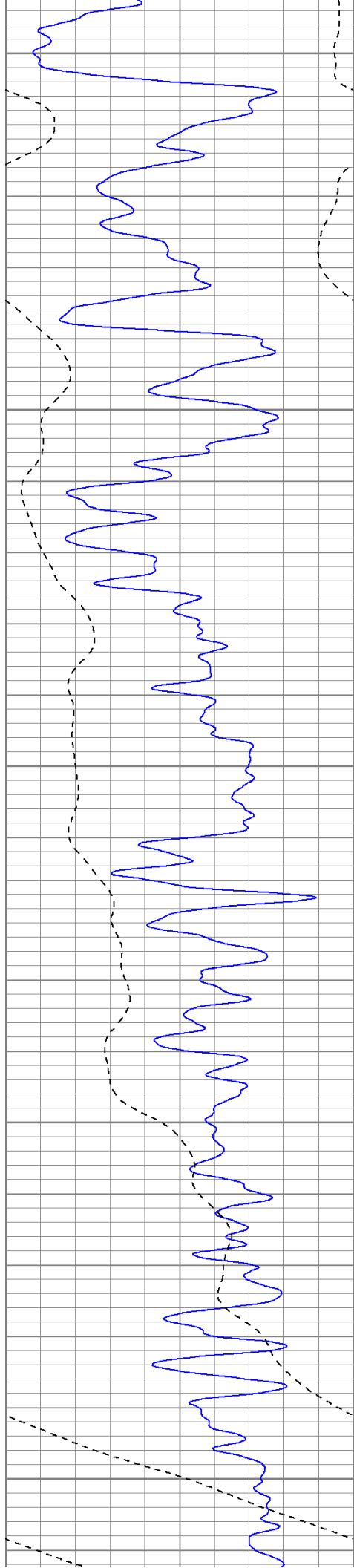
1500

1550

Fluid Level

1600





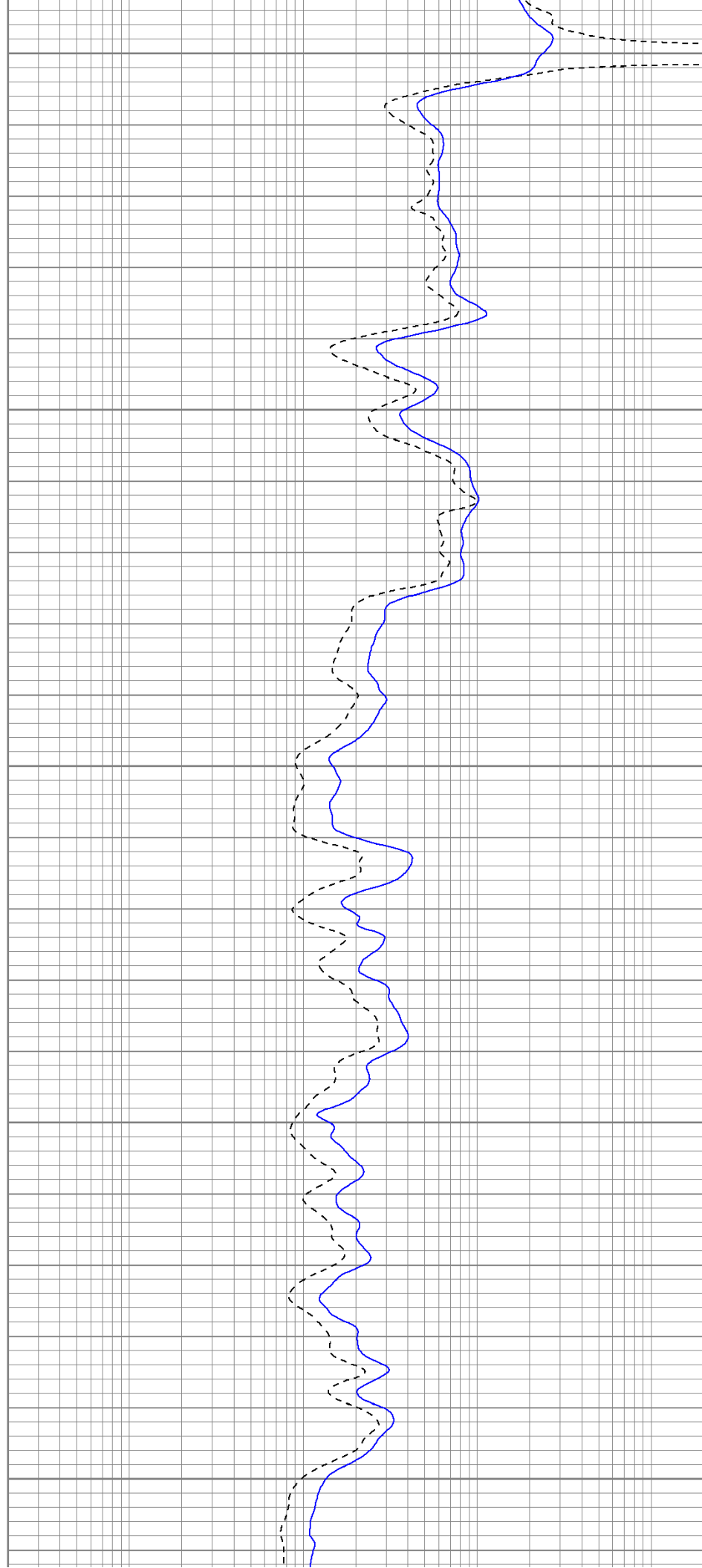
1650

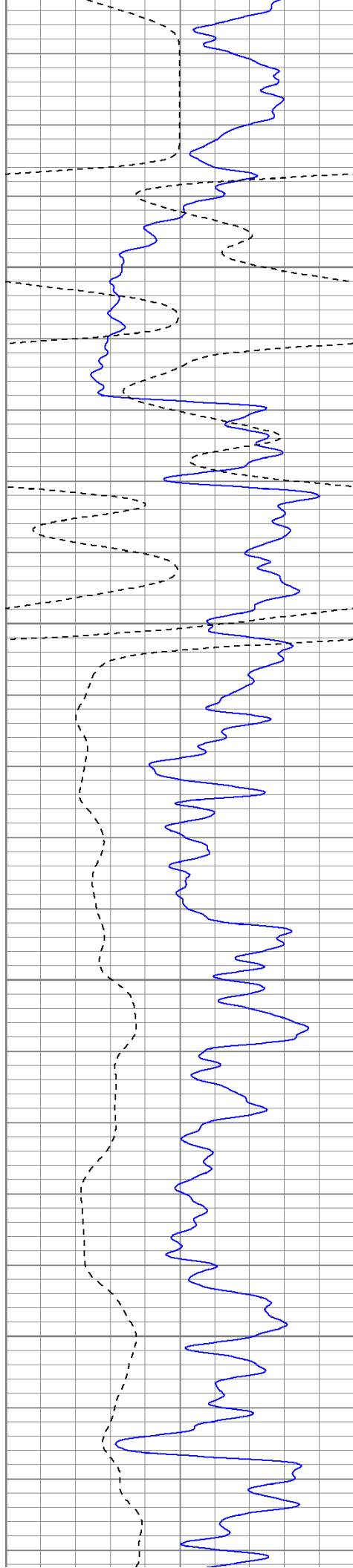
1700

1750

1800

1850



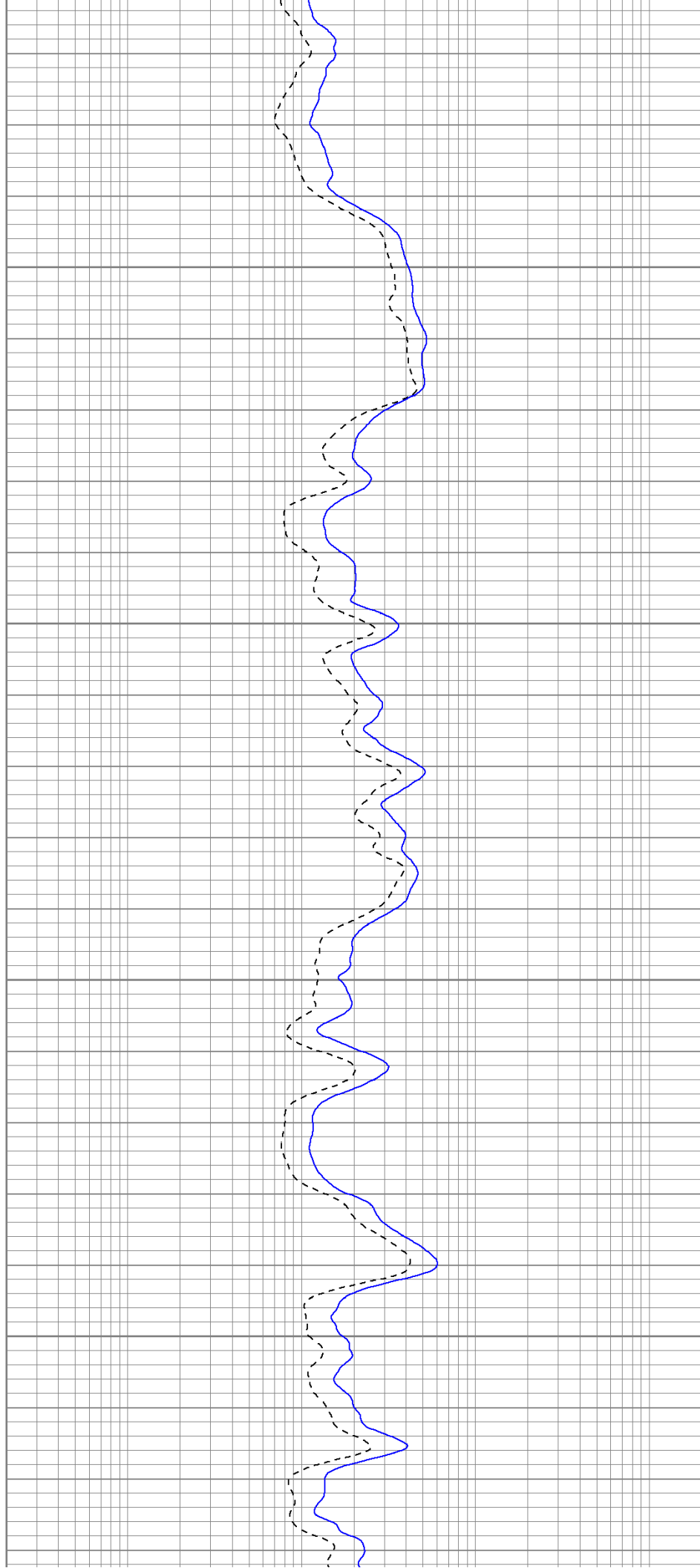


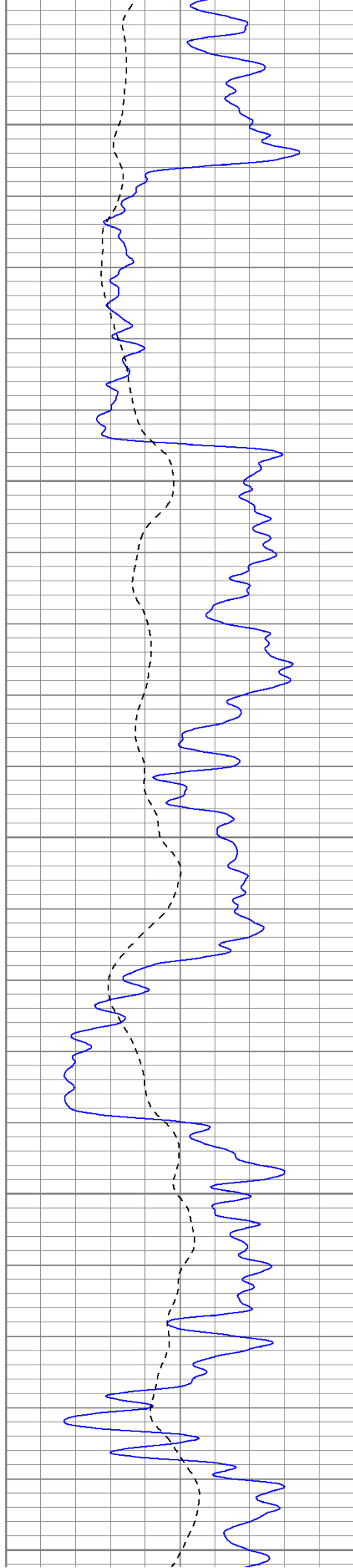
1900

1950

2000

2050





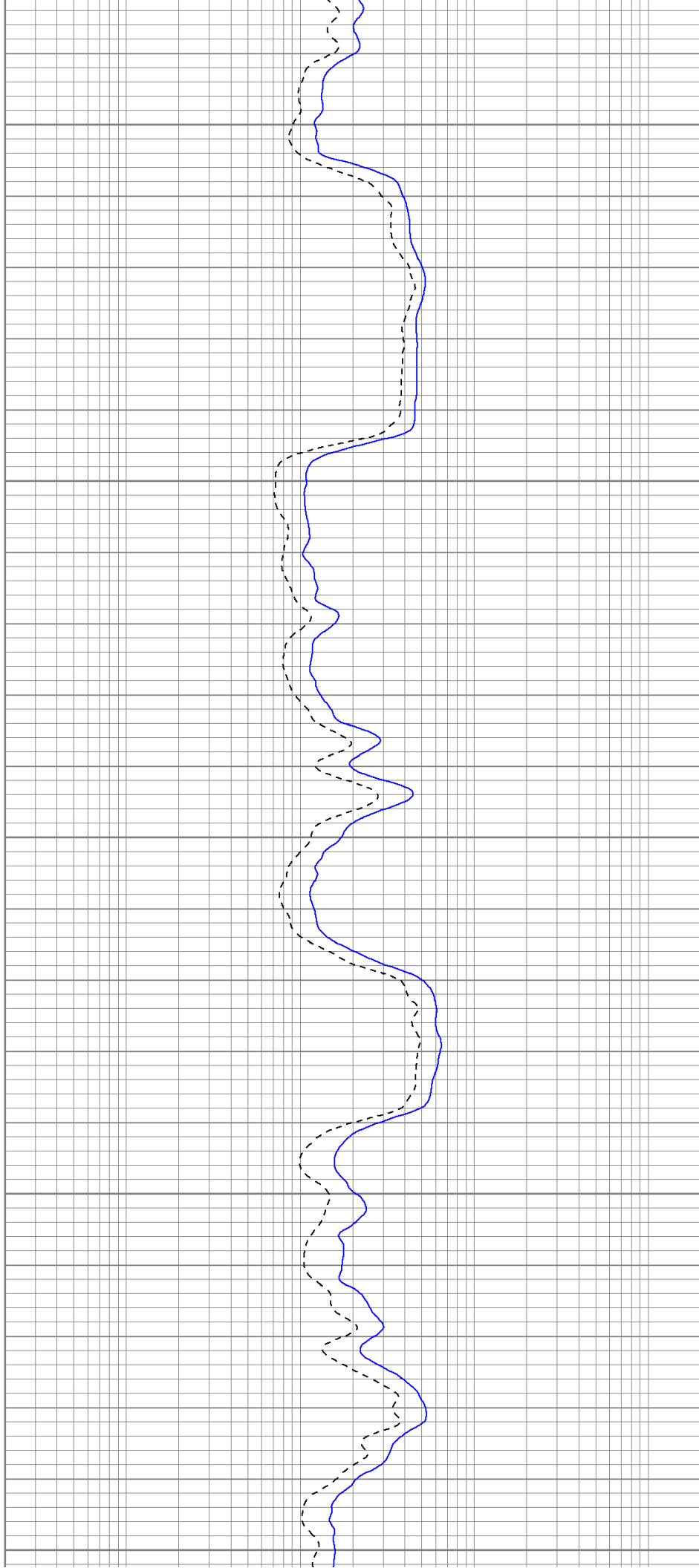
2100

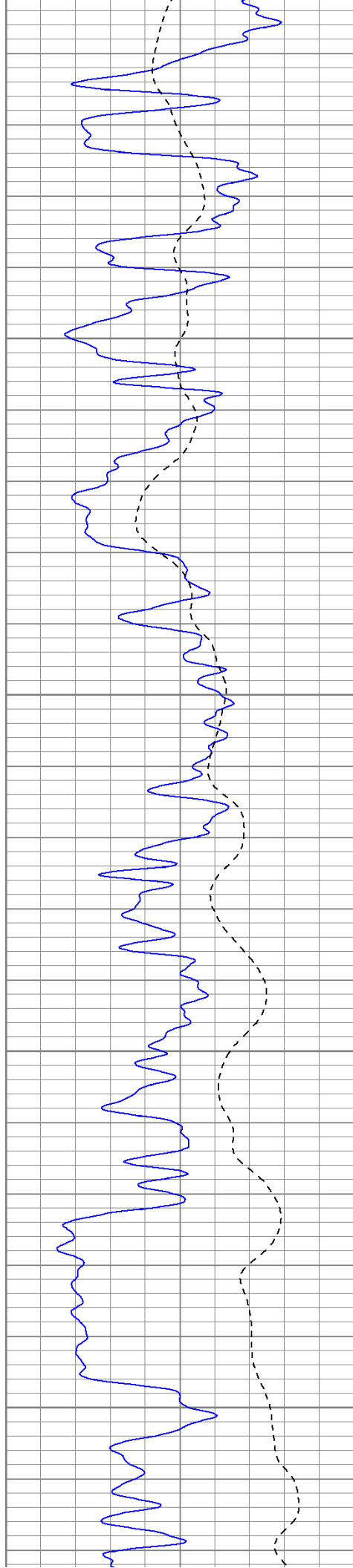
2150

2200

2250

2300



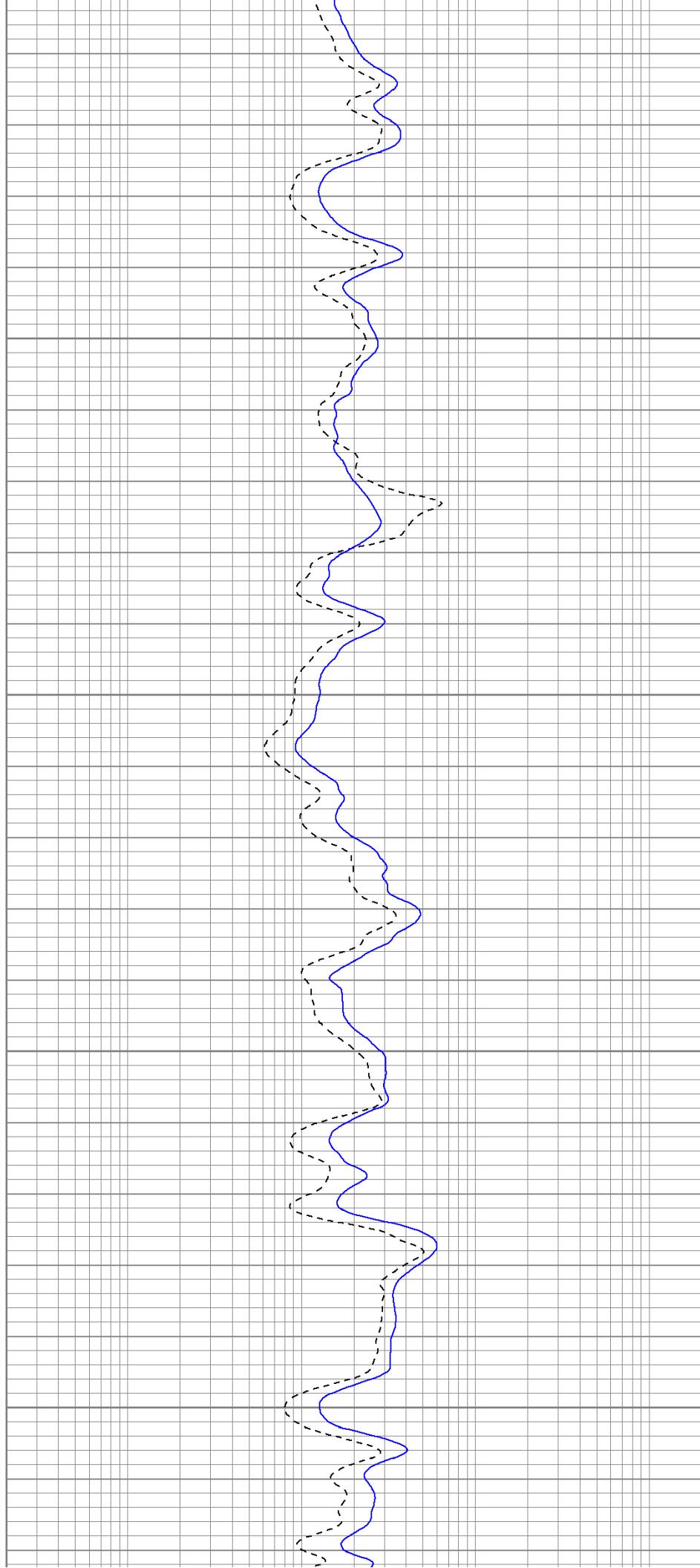


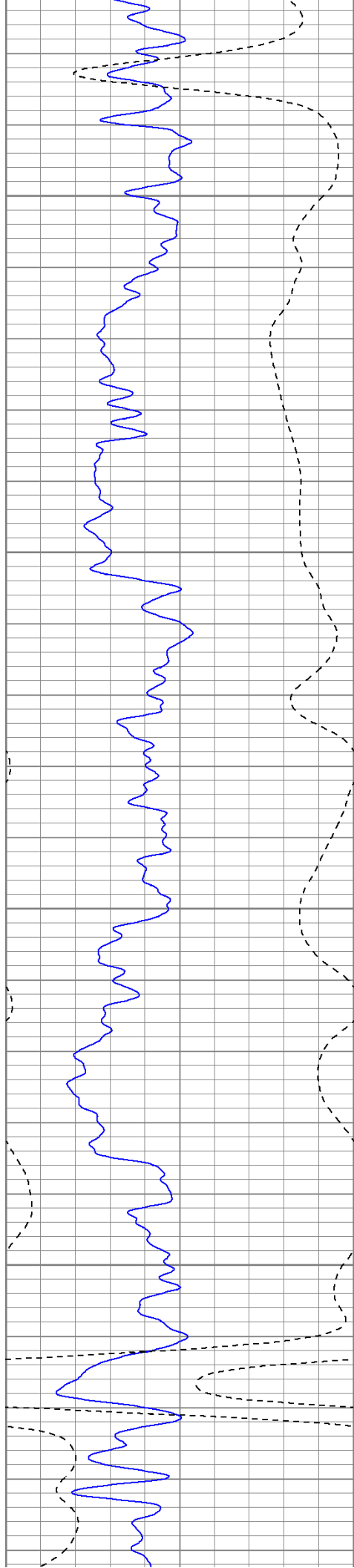
2350

2400

2450

2500



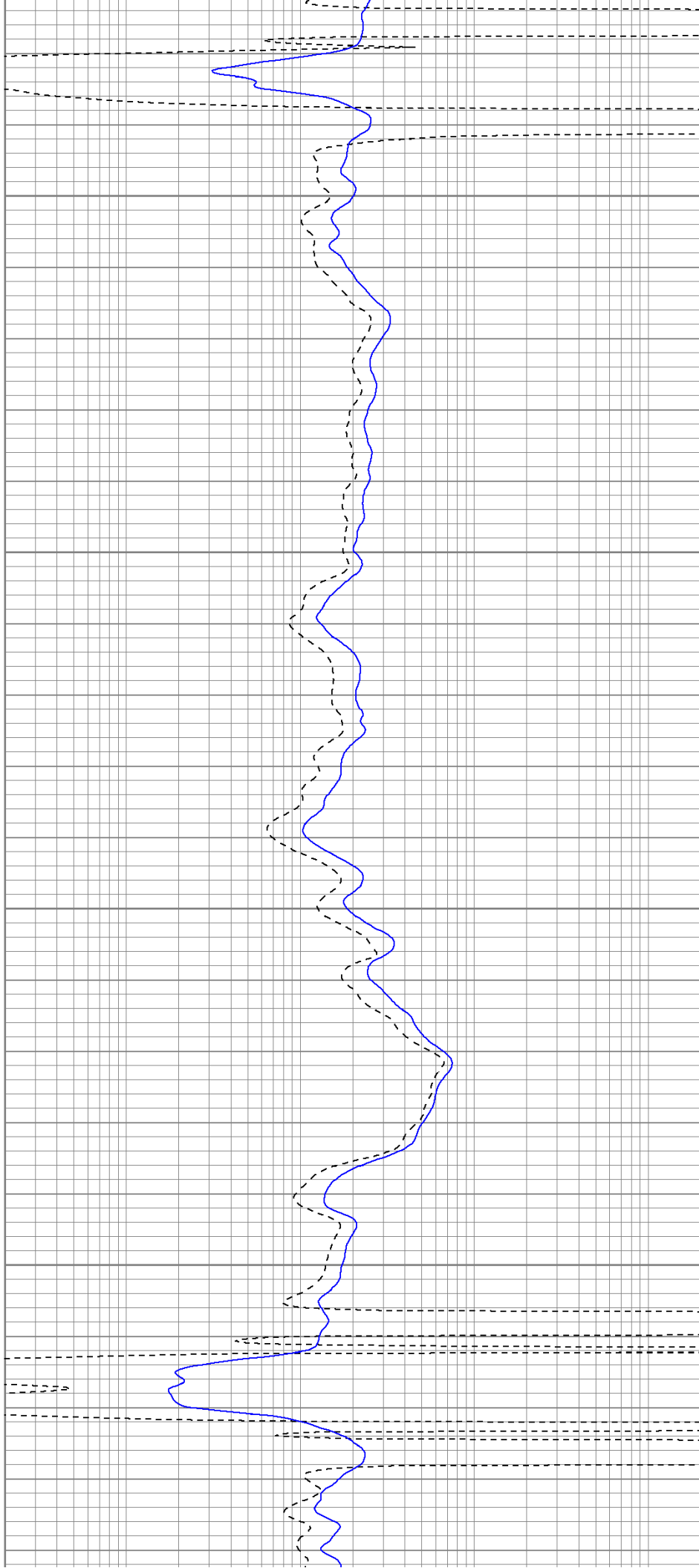


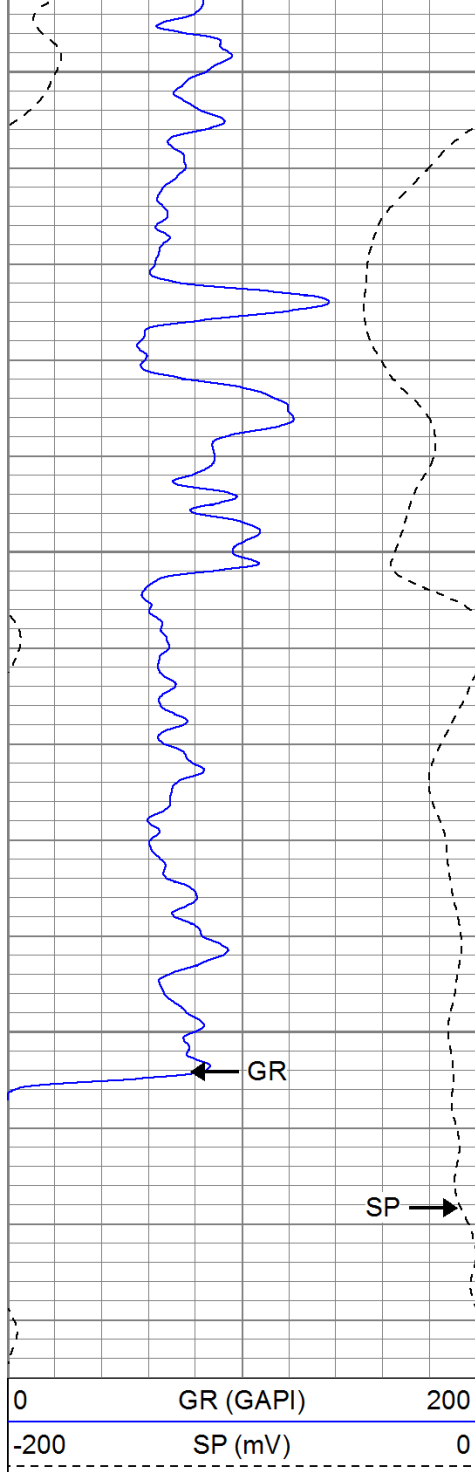
2550

2600

2650

2700

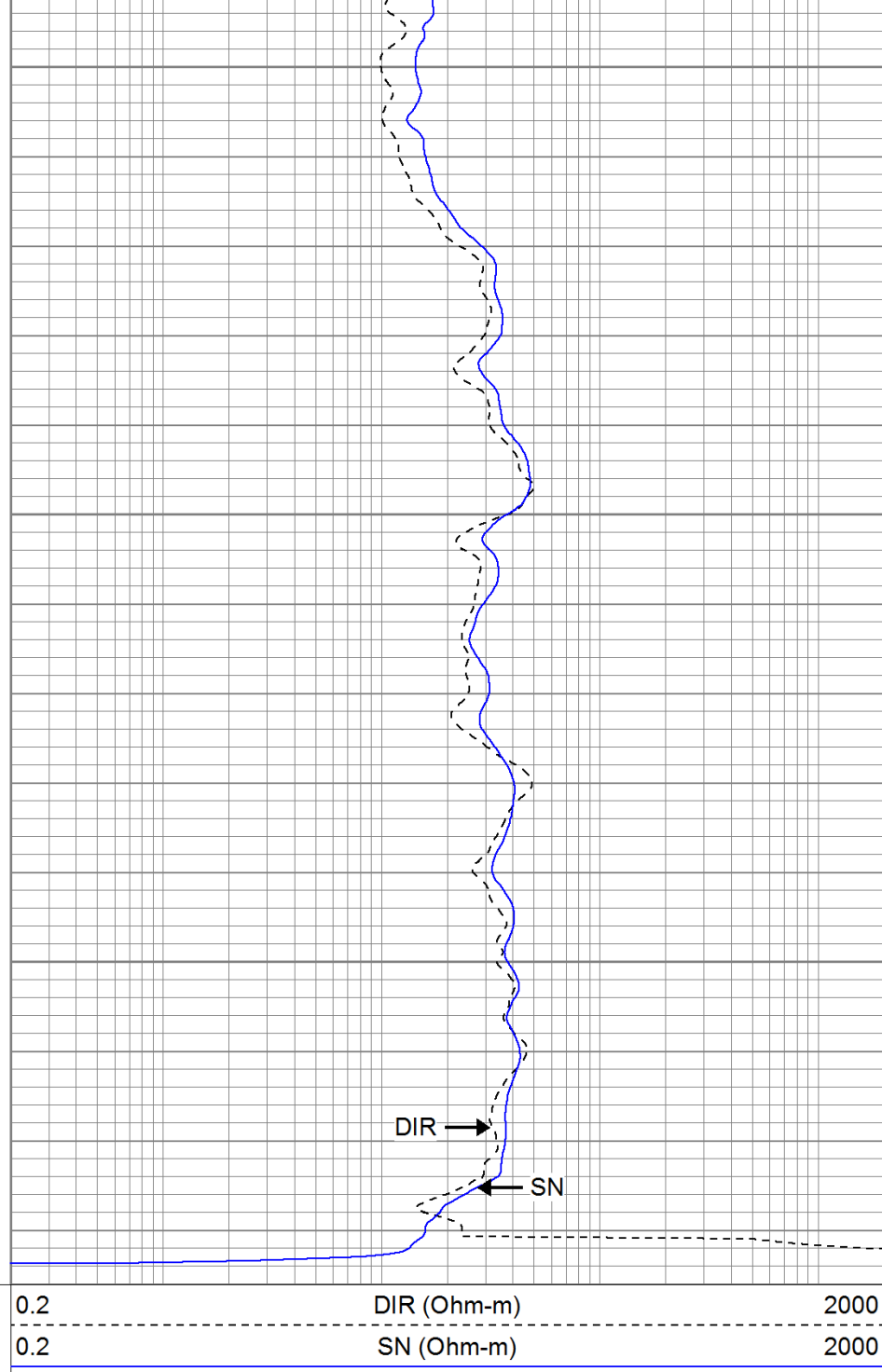




2750

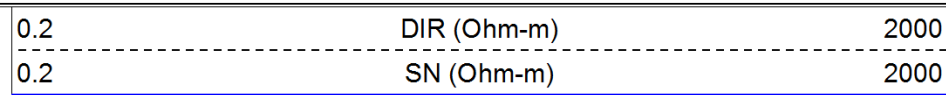
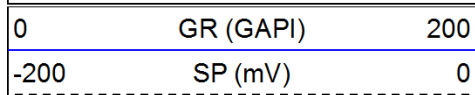
2800

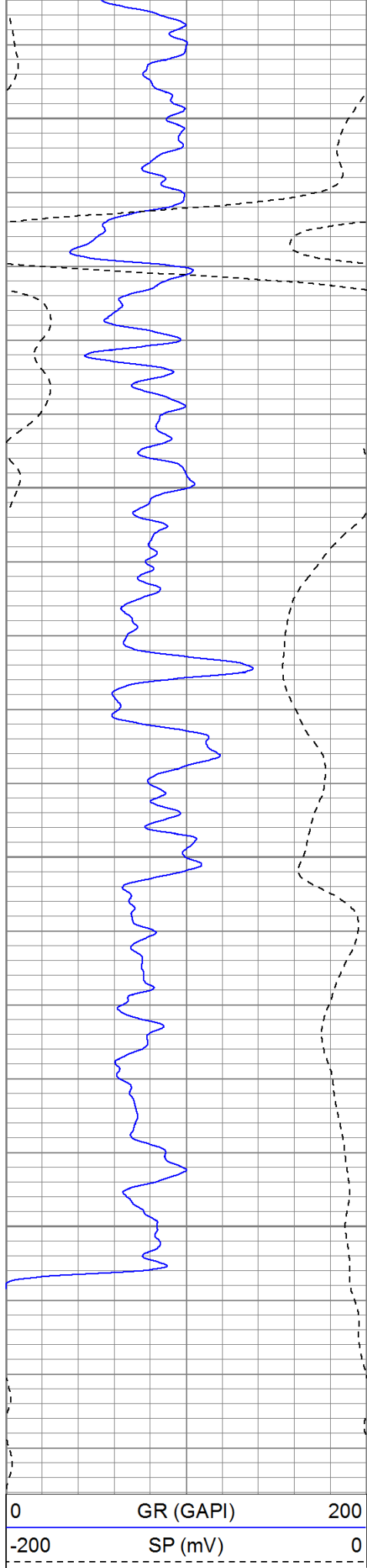
2850



Repeat Pass

Database File: haught.db
 Dataset Pathname: pass1.1
 Presentation Format: iel
 Dataset Creation: Mon Jul 04 07:20:35 2011 by Calc Open-Cased 110302
 Charted by: Depth in Feet scaled 1:240





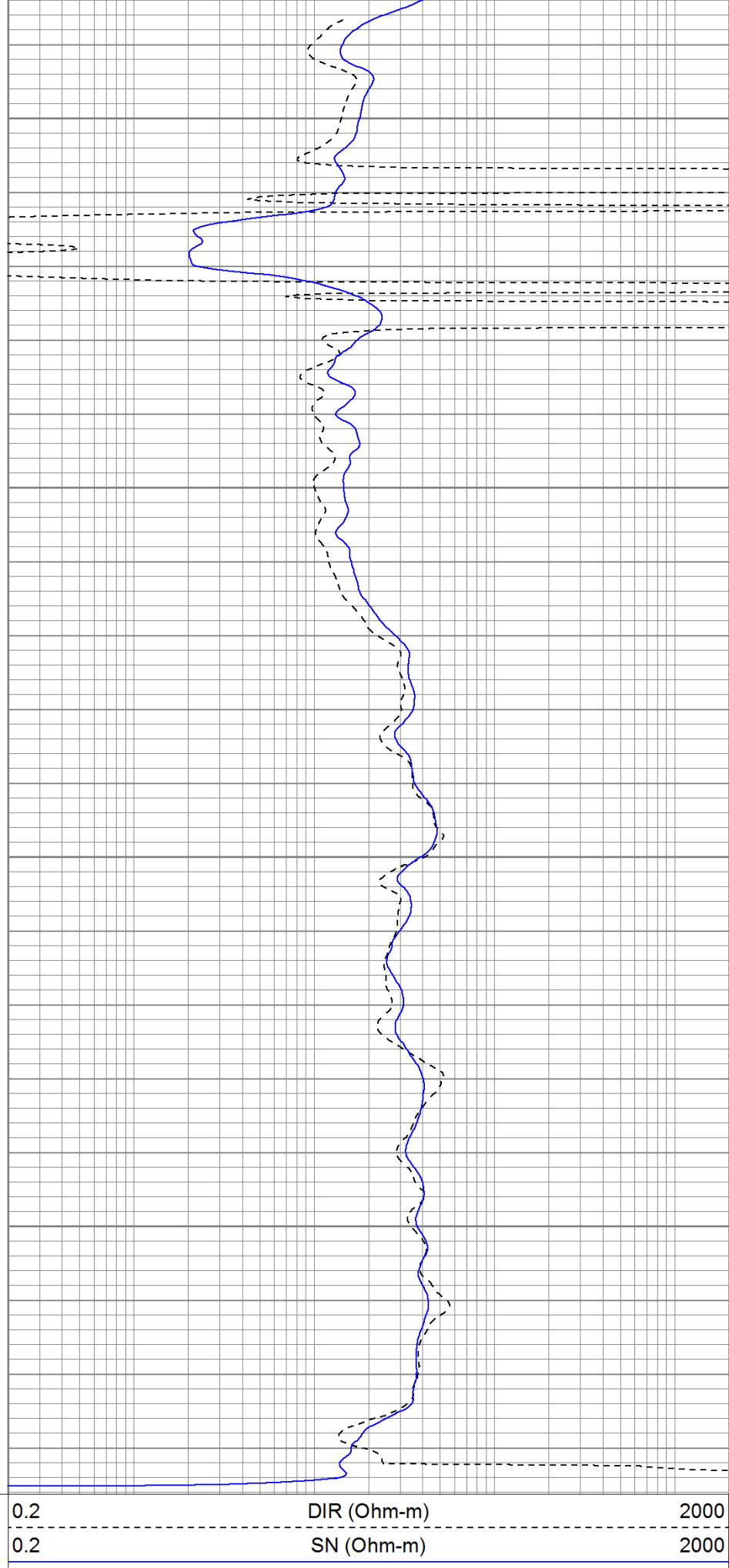
2700

2750

2800

2850

0 GR (GAPI) 200
-200 SP (mV) 0



0.2 DIR (Ohm-m) 2000
0.2 SN (Ohm-m) 2000

Calibration Report

Database File: haught.db
 Dataset Pathname: pass1
 Dataset Creation: Mon Jul 04 05:37:19 2011 by Log Open-Cased 110302

Induction Tool Calibration Report

Serial Number: 903
 Tool Model: Probe
 Downhole Cal Performed: Sat Jun 18 15:02:12 2011
 Surface Cal Performed: Sat Jun 18 17:40:00 2011
 After Survey Verification Performed:

Surface Calibration:	Air	Loop	
Conductivity Reference:	0.000	500.000	mmho
Conductivity Reading:	-0.045	0.642	V
Internal Reference:	Zero	Cal	
Conductivity Reference:	0.000	500.000	mmho
Conductivity Reading:	0.006	0.641	V

Downhole Calibration:	Internal Zero	Internal Cal	
Conductivity Reference:	-0.702	499.904	mmho
Conductivity Reading:	-0.082	503.319	V
Short Normal Reference:	0.000	20.000	Ohm-m
Short Normal Reading:	0.006	0.233	V

Results:	Gain	Offset
Loop Conductivity:	728.211	32.770
Downhole Correction:	0.994	-0.621
Short Normal Resistivity:	88.245	-3.000

After Survey Verification	Internal Zero	Internal Cal	
Conductivity Reading:	0.000	0.000	V
Conductivity Result:	0.000	0.000	mmho
Short Normal Reading:	0.000	0.000	V
Short Normal Result:	0.000	0.000	Ohm-m

Compensated Density Calibration Report

Serial-Model: 901-2.75POH
 Source / Verifier: /
 Master Calibration Performed: Wed Jun 08 09:11:26 2011
 Before Survey Verification Performed:
 After Survey Verification Performed:

Master Calibration




	Density		Far Detector	Near Detector	
Magnesium	1.710	g/cc	1001.79	578.48	cps
Aluminum	2.590	g/cc	180.36	300.39	cps
Spine Angle = 69.08			Density/Spine Ratio = 0.479		
	Size		Reading		
Small Ring	8.00	in	2.50	V	
Large Ring	16.00	in	4.57	V	

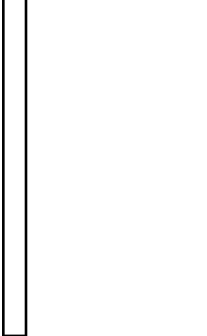
Before Survey Verification

Target	Measured
g/cc	g/cc
g/cc	g/cc
g/cc	g/cc

After Survey Verification

Target		Measured	
	g/cc		g/cc
	g/cc		g/cc
	g/cc		g/cc
Neutron Calibration Report			
Serial Number:	803		
Tool Model:	2.75POH		
Performed:	Wed Jun 08 13:12:55 2011		
Calibrator Value:	1	NAPI	
Calibrator Reading:	1	cps	
Sensitivity:	1	NAPI/cps	
Gamma Ray Calibration Report			
Serial Number:	804		
Tool Model:	2.75POH		
Performed:	Tue Jun 14 18:09:29 2011		
Calibrator Value:	1.0	GAPI	
Background Reading:	0.0	cps	
Calibrator Reading:	1.0	cps	
Sensitivity:	0.6000	GAPI/cps	

Sensor	Offset (ft)	Schematic	Description	Len (ft)	OD (in)	Wt (lb)
GR	29.58		None	0.75	1.50	5.00
			GR-2.75POH (804) Probe 2.75" Probe Open Hole Gamma Ray	3.73	2.75	43.00
NEU	24.04		NEU-2.75POH (803) Probe Epithermal	4.75	2.75	58.00
LSD	16.21		CDL-2.75POH (901) Probe	8.43	2.75	106.00
DCAL	15.94					
SSD	15.69					

DIC	6.24		IEL-Probe (903)	13.46	2.75	93.00
SP	2.25					
SN	1.71					

Dataset: haught.db: field/well/run1/pass1

Total Length: 31.11 ft

Total Weight: 305.00 lb

O.D. 2.75 in