

**CEMENT BOND
LOG**

Company Pioneer Natural Res.
Well Haught 42-30
Field Purgatoire River
County Las Animas
State Colorado

Company Pioneer Natural Resources
Well Haught 42-30
Field Purgatoire River
County Las Animas State Colorado

Location: API #: 05 071 09710 00

SEC 30 TWP 32S RGE 67W

Permanent Datum Ground Level Elevation 7826'
Log Measured From Kelly Bushing 9' Above G L
Drilling Measured From Kelly Bushing

Elevation
K.B. 7835'
D.F.
G.L. 7826'

Date	09-07-11					
Run Number	Final					
Depth Driller	2905'					
Depth Logger	2774'					
Bottom Logged Interval	2770'					
Top Log Interval	Surface					
Open Hole Size	8 3/4					
Type Fluid	Water					
Density / Viscosity	///					
Max. Recorded Temp.	///					
Estimated Cement Top						
Time Well Ready	3:00 p.m.					
Time Logger on Bottom	4:00 p.m.					
Equipment Number	440					
Location	Trinidad					
Recorded By	Jayson Buhr					
Witnessed By	Mike Polly					
Borehole Record						
Run Number	Bit	From	To	Size	Weight	To
Tubing Record						
Casing Record	Size	Wgt/Ft	Top			Bottom
Surface String	8 5/8					392'
Prot. String						
Production String	5 1/2	15.5				TD
Liner						

<<< Fold Here >>>

All interpretations are opinions based on inferences from electrical or other measurements and we cannot and do not guarantee the accuracy or correctness of any interpretation, and we shall not, except in the case of gross or willful negligence on our part, be liable or responsible for any loss, costs, damages, or expenses incurred or sustained by anyone resulting from any interpretation made by any of our officers, agents or employees. These interpretations are also subject to our general terms and conditions set out in our current Price Schedule.

Comments

Directions:

Wet Canyon to San Pablo, at dude canyon stay right, 4th left to location

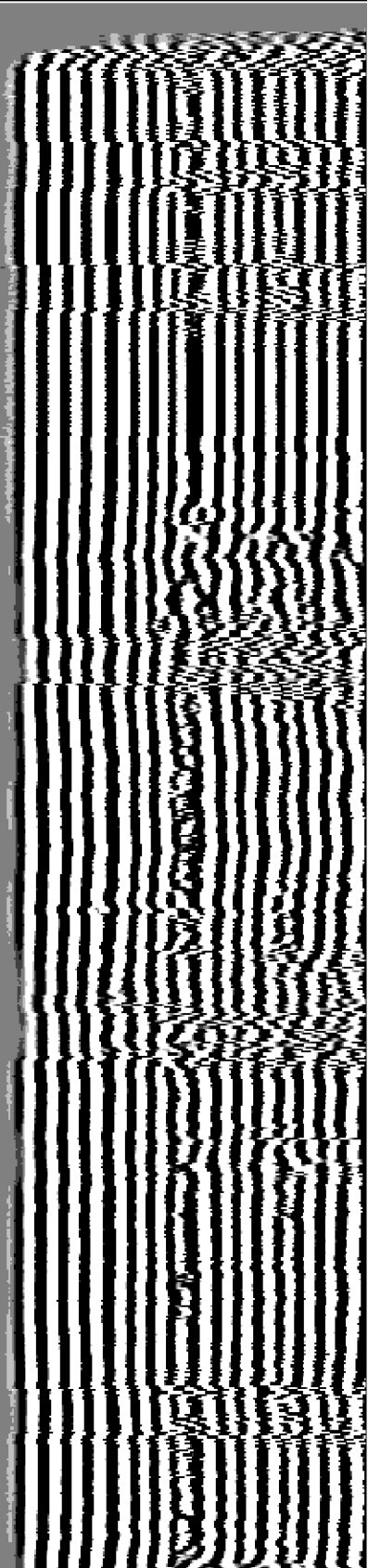
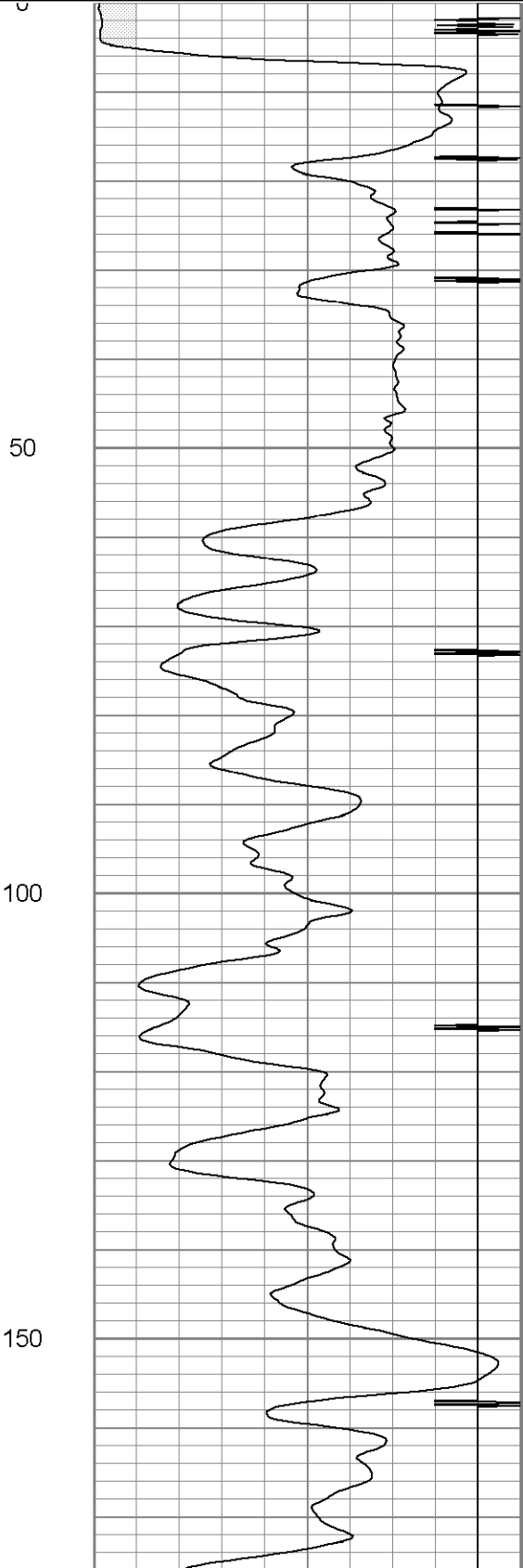
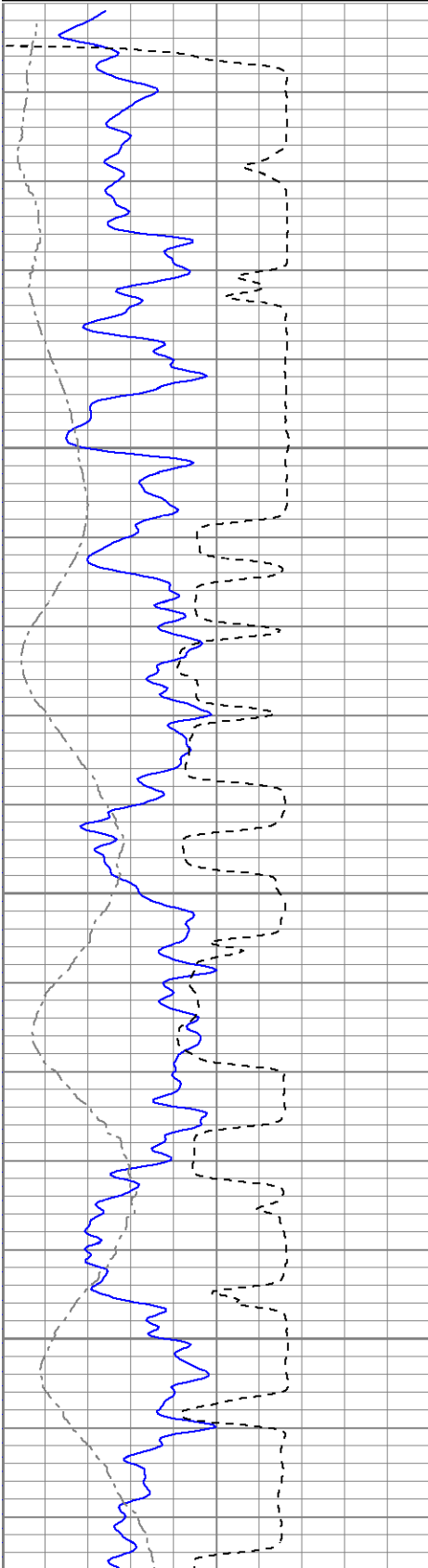
Main pass Ran Under 1000 PSI

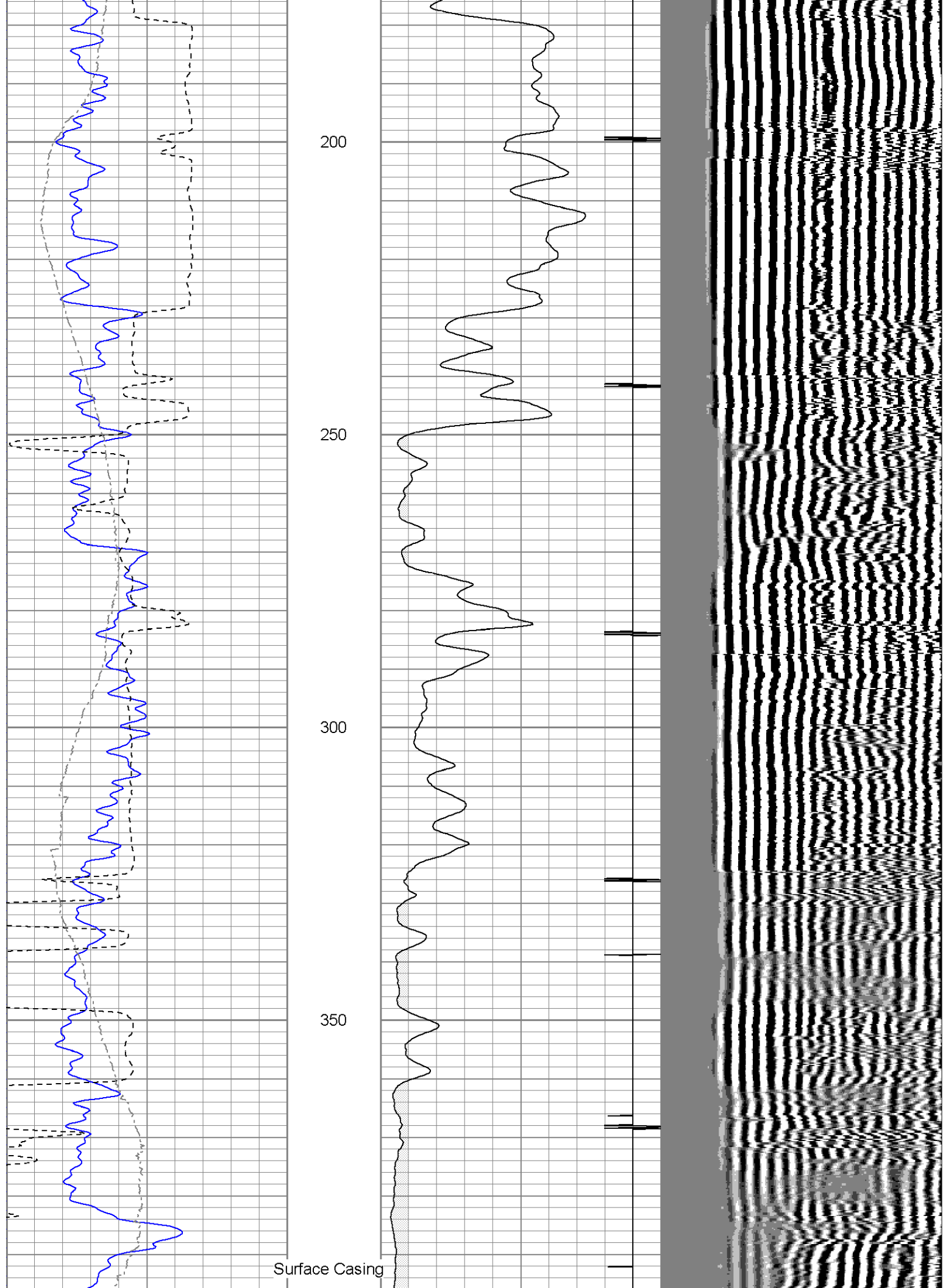
Database File: haught090711b.db
Dataset Pathname: pass2
Presentation Format: cbl
Dataset Creation: Wed Jan 01 00:19:24 2003 by Log Open-Cased 071220
Charted by: Depth in Feet scaled 1:240

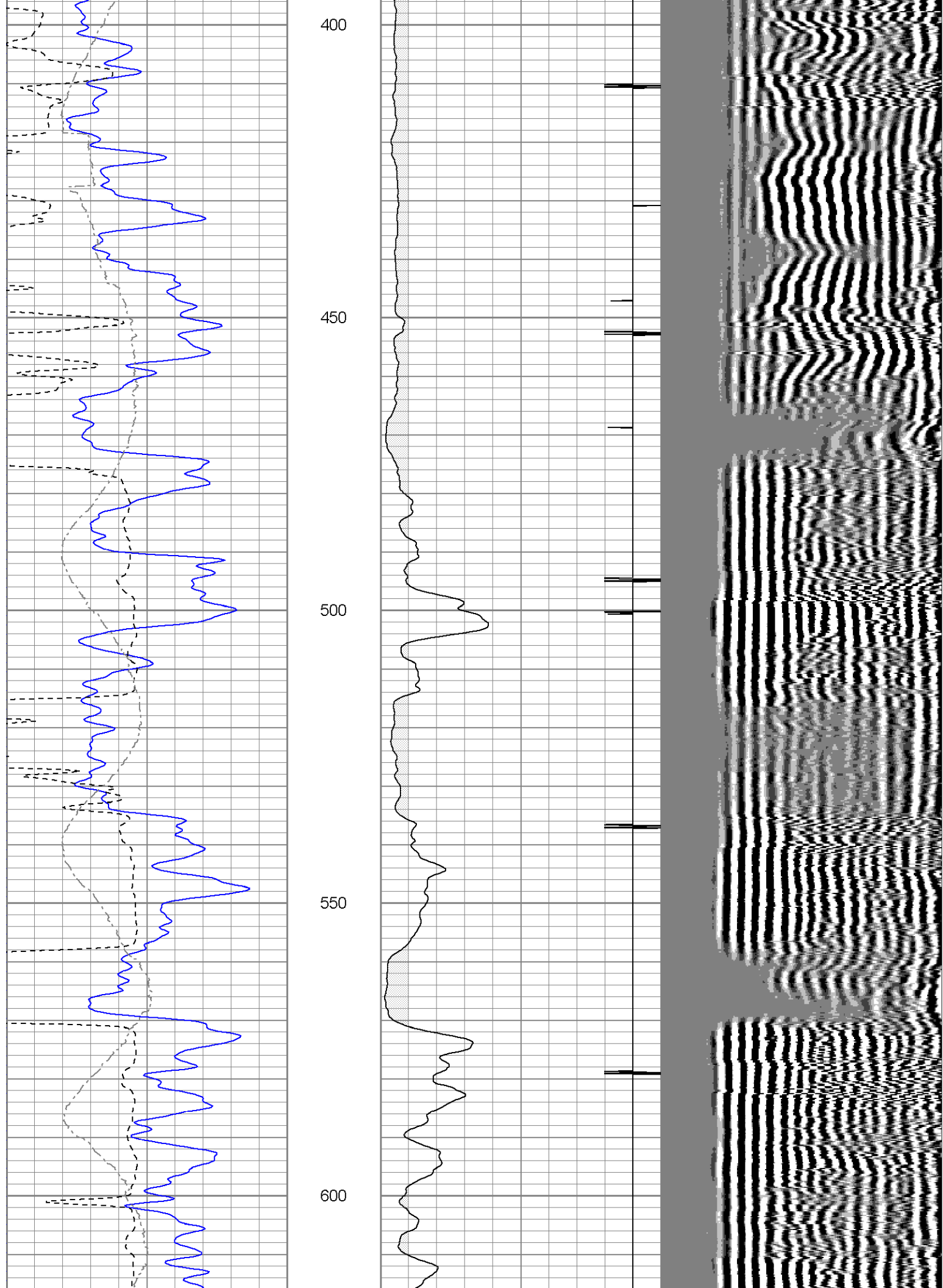
0	GR (GAPI)	200
200	GR (GAPI)	400
400	TT3 (usec)	200
0	DEVI (°)	10

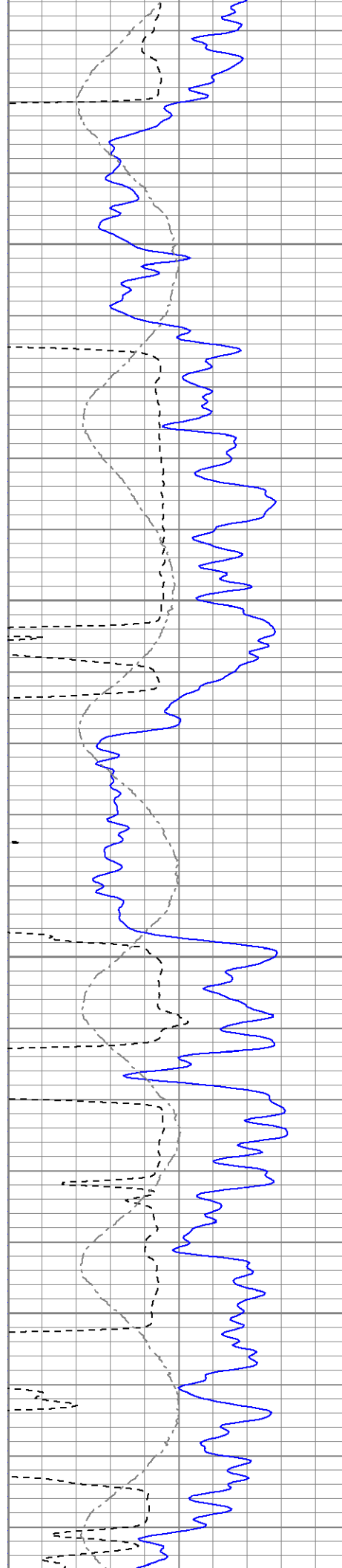
18	CCL	-2
0	AMP3 (mV)	100

200 VDL 1200







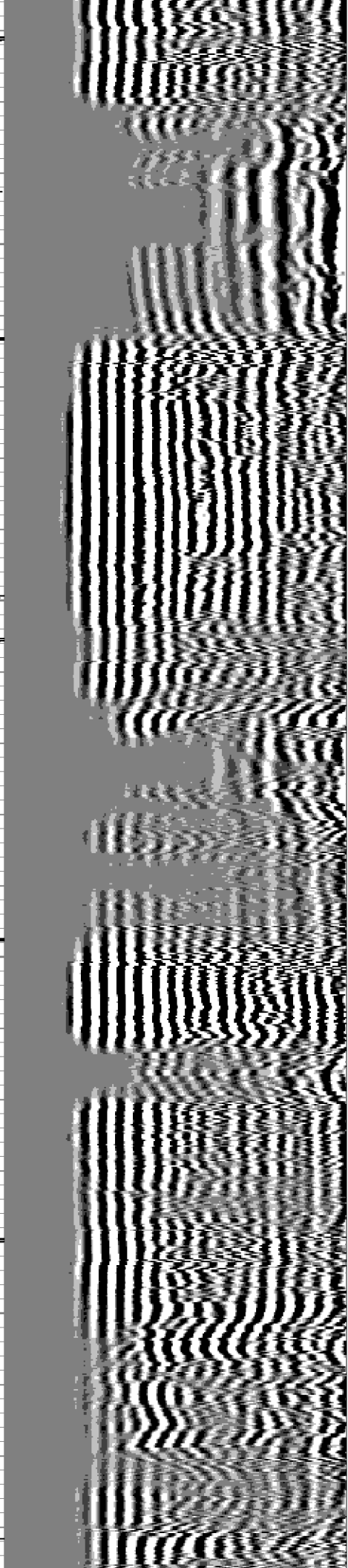
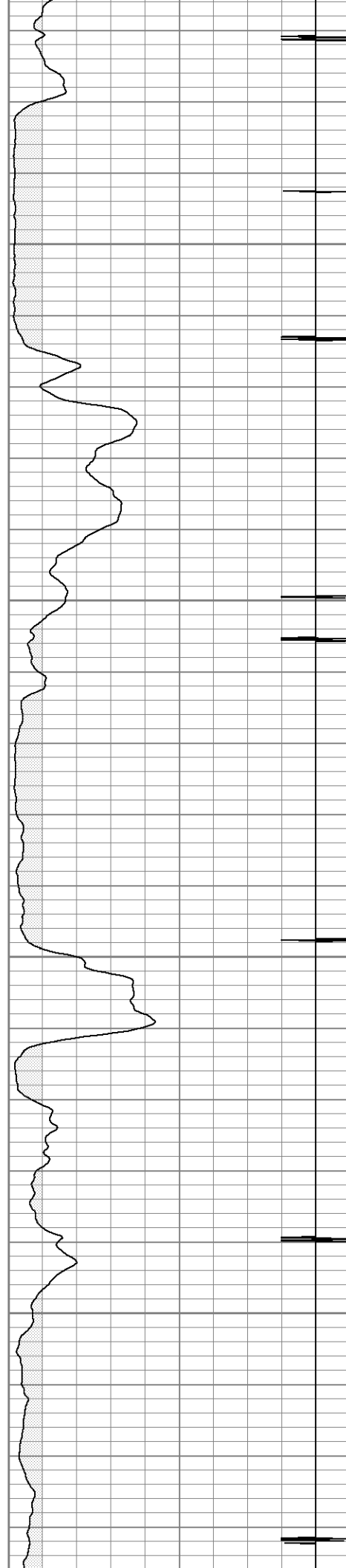


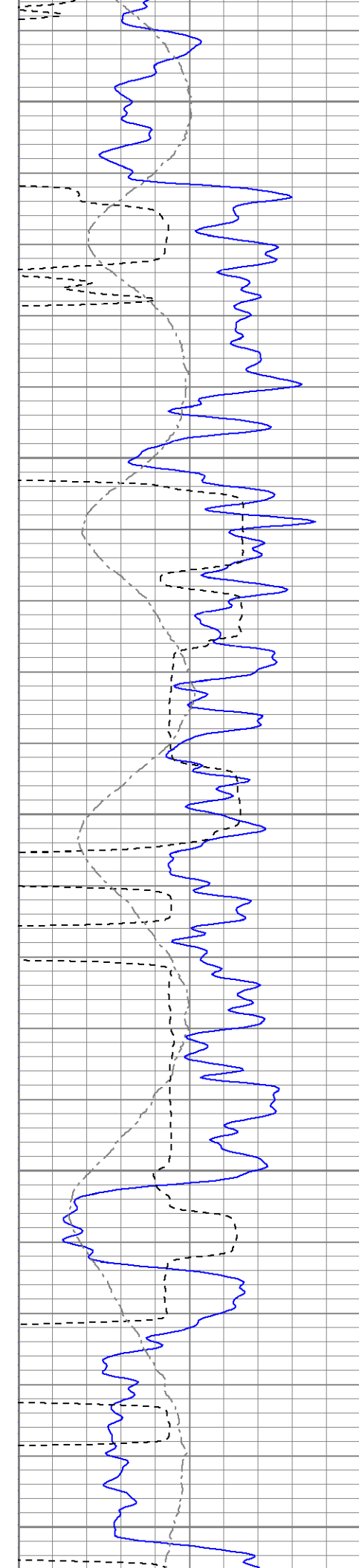
650

700

750

800





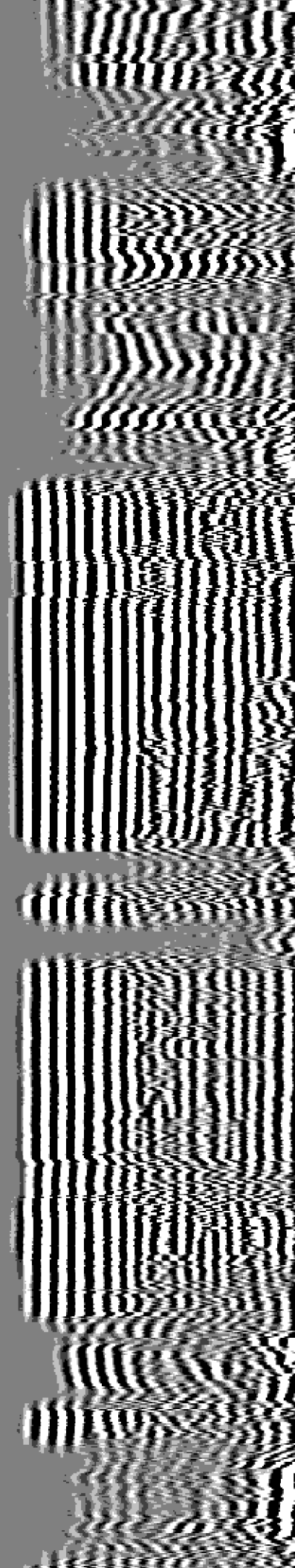
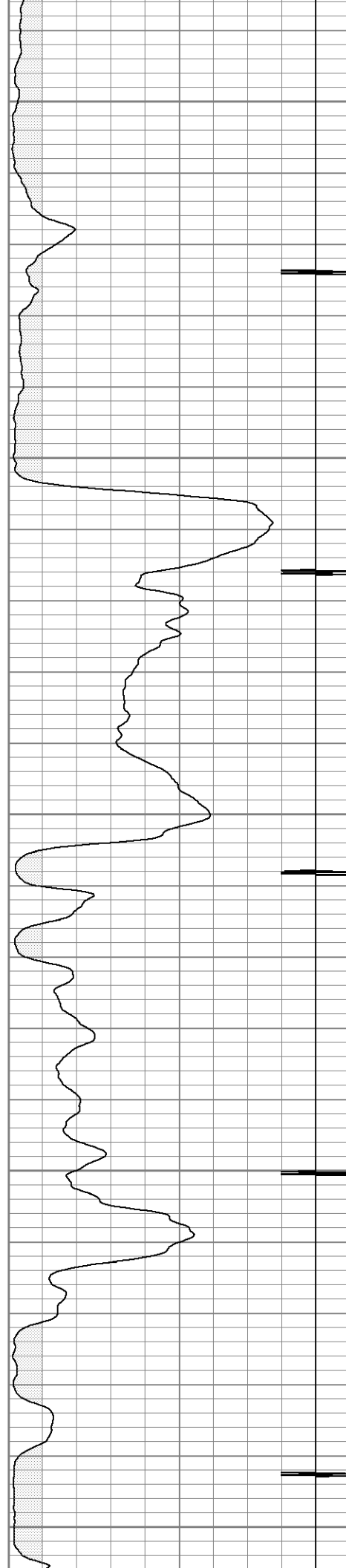
850

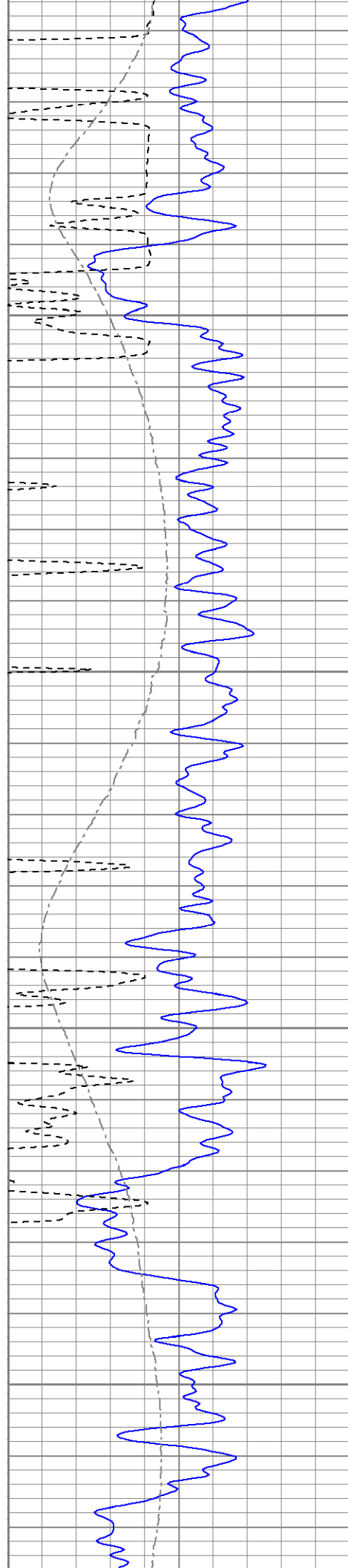
900

950

1000

1050



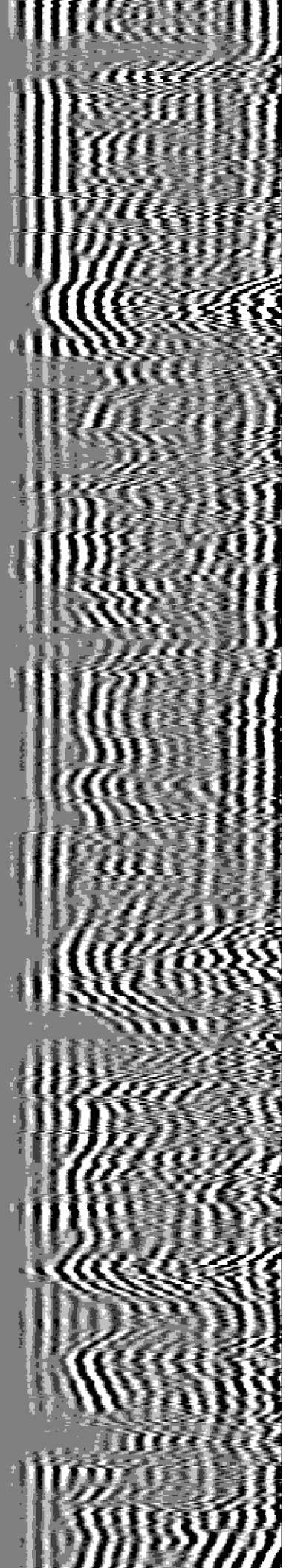
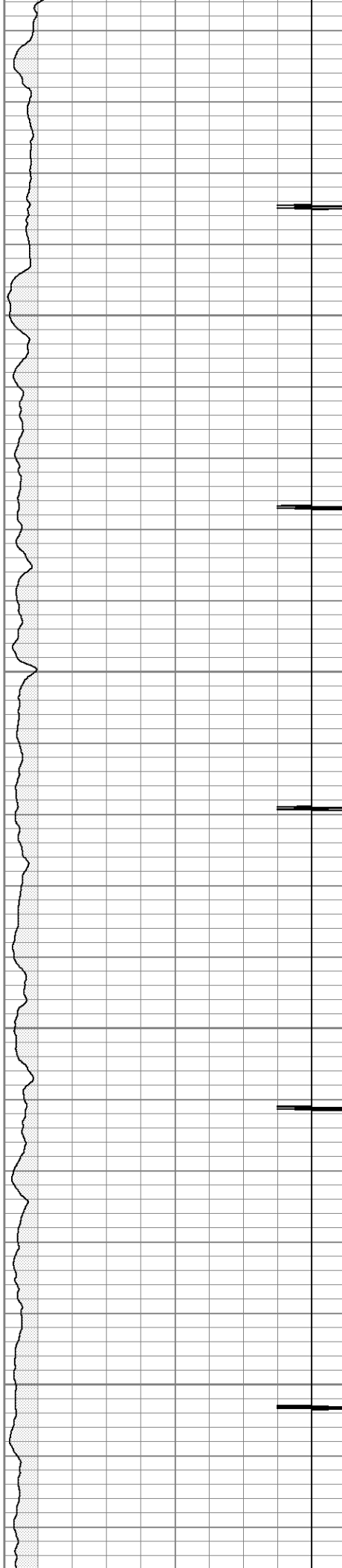


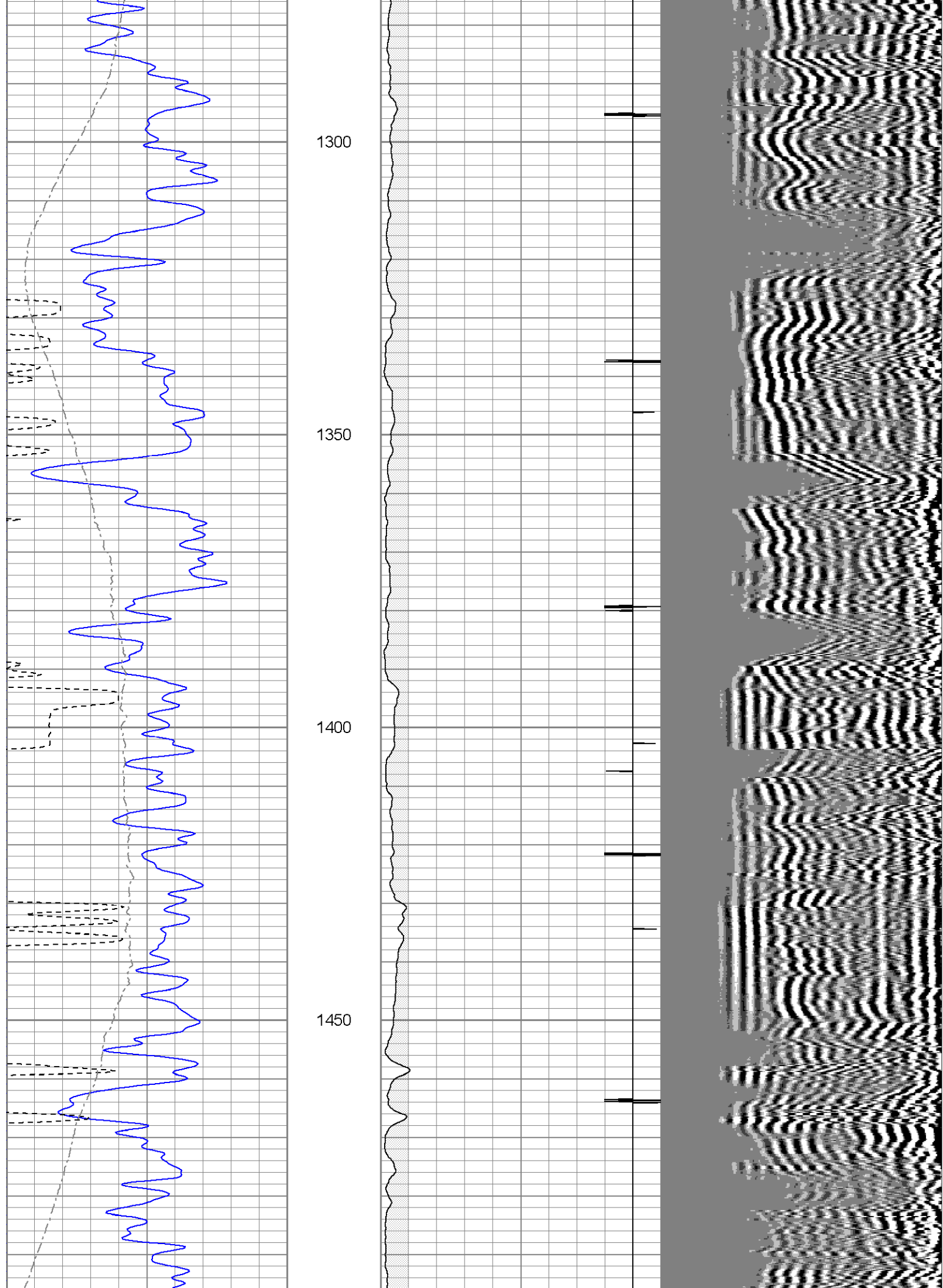
1100

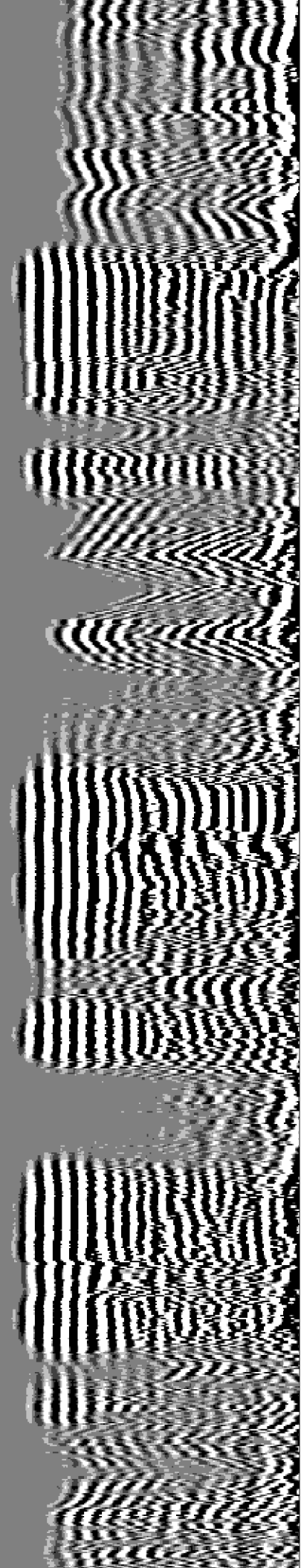
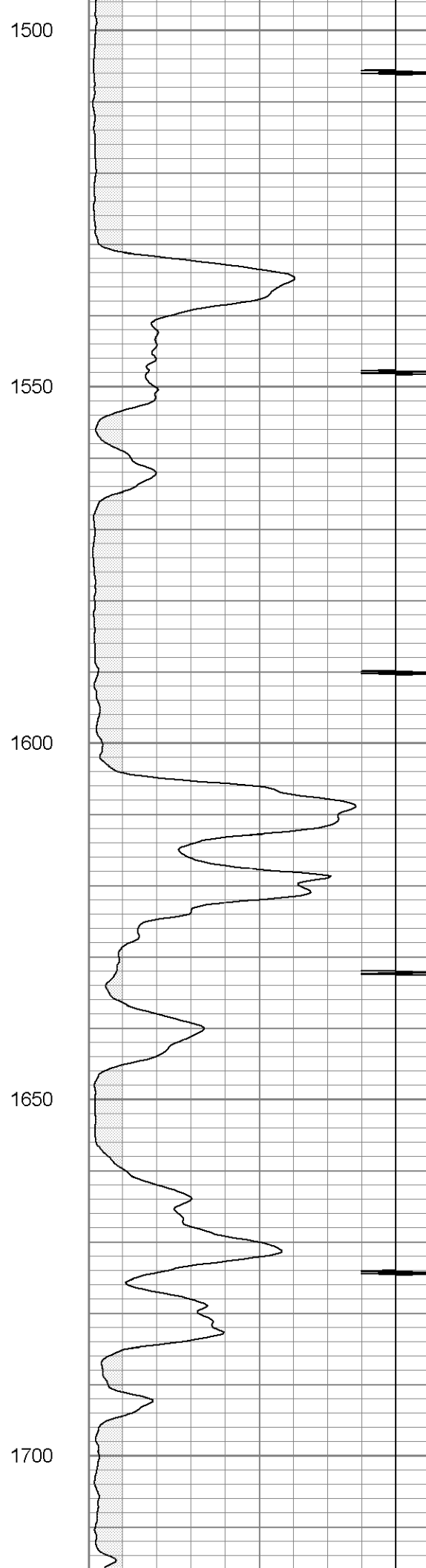
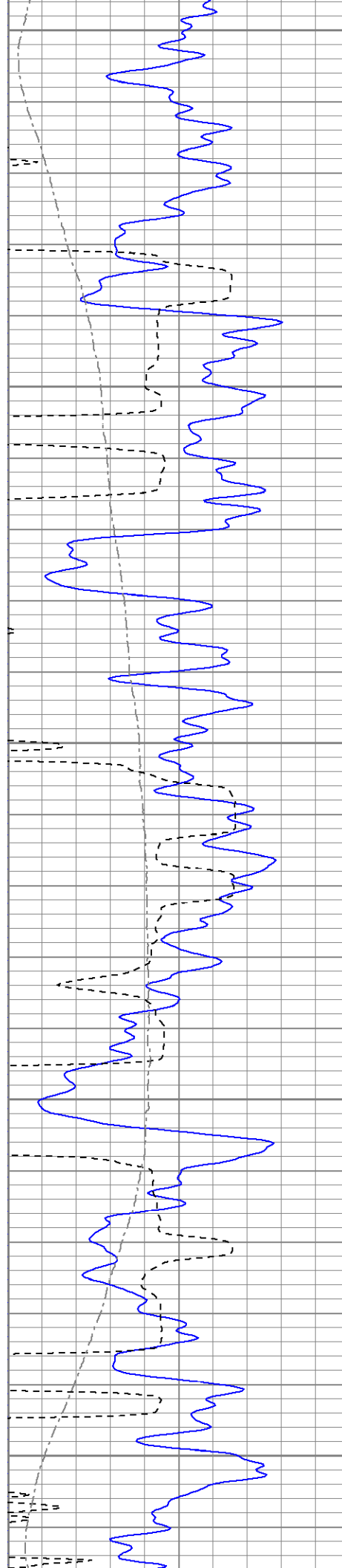
1150

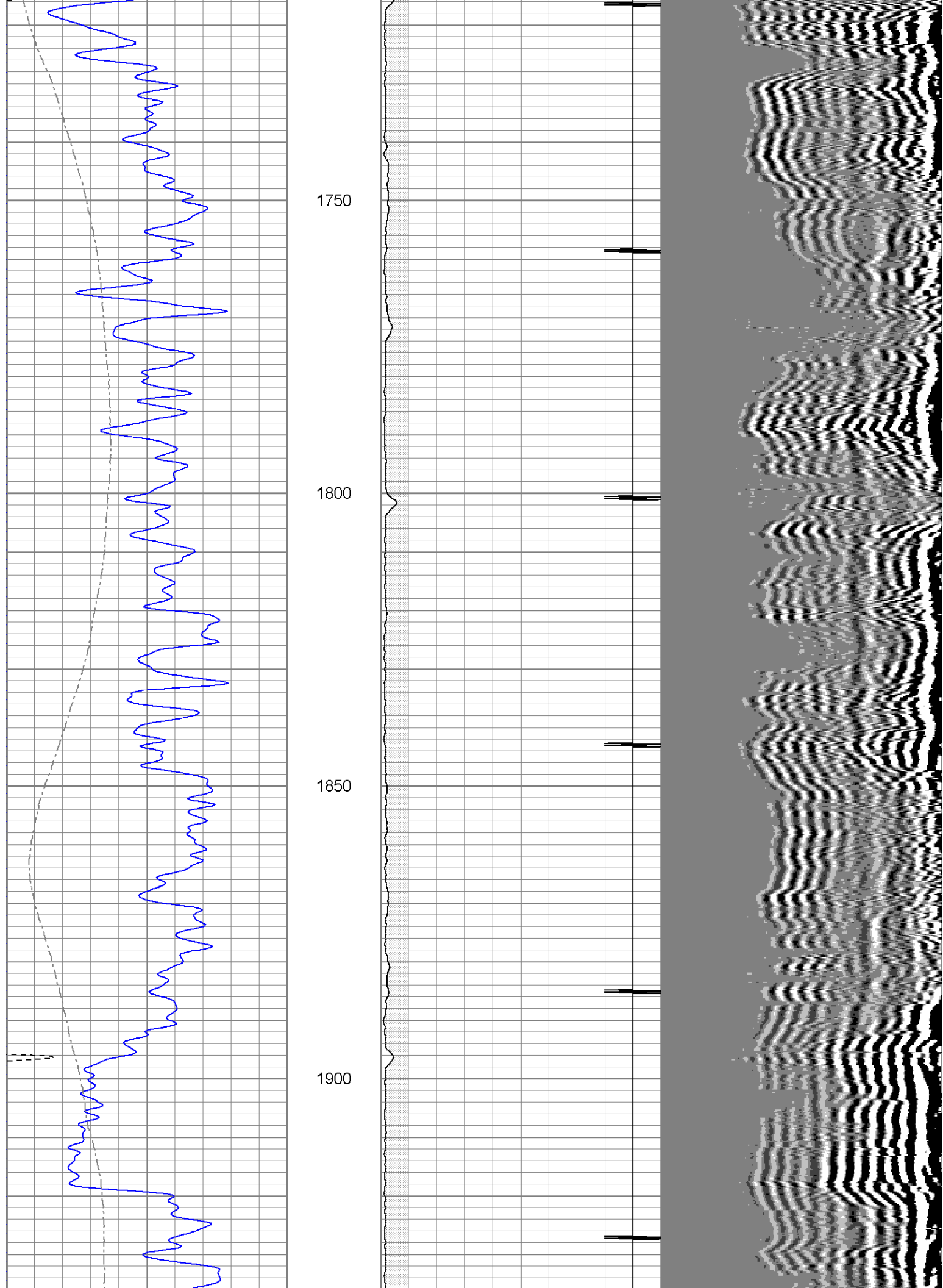
1200

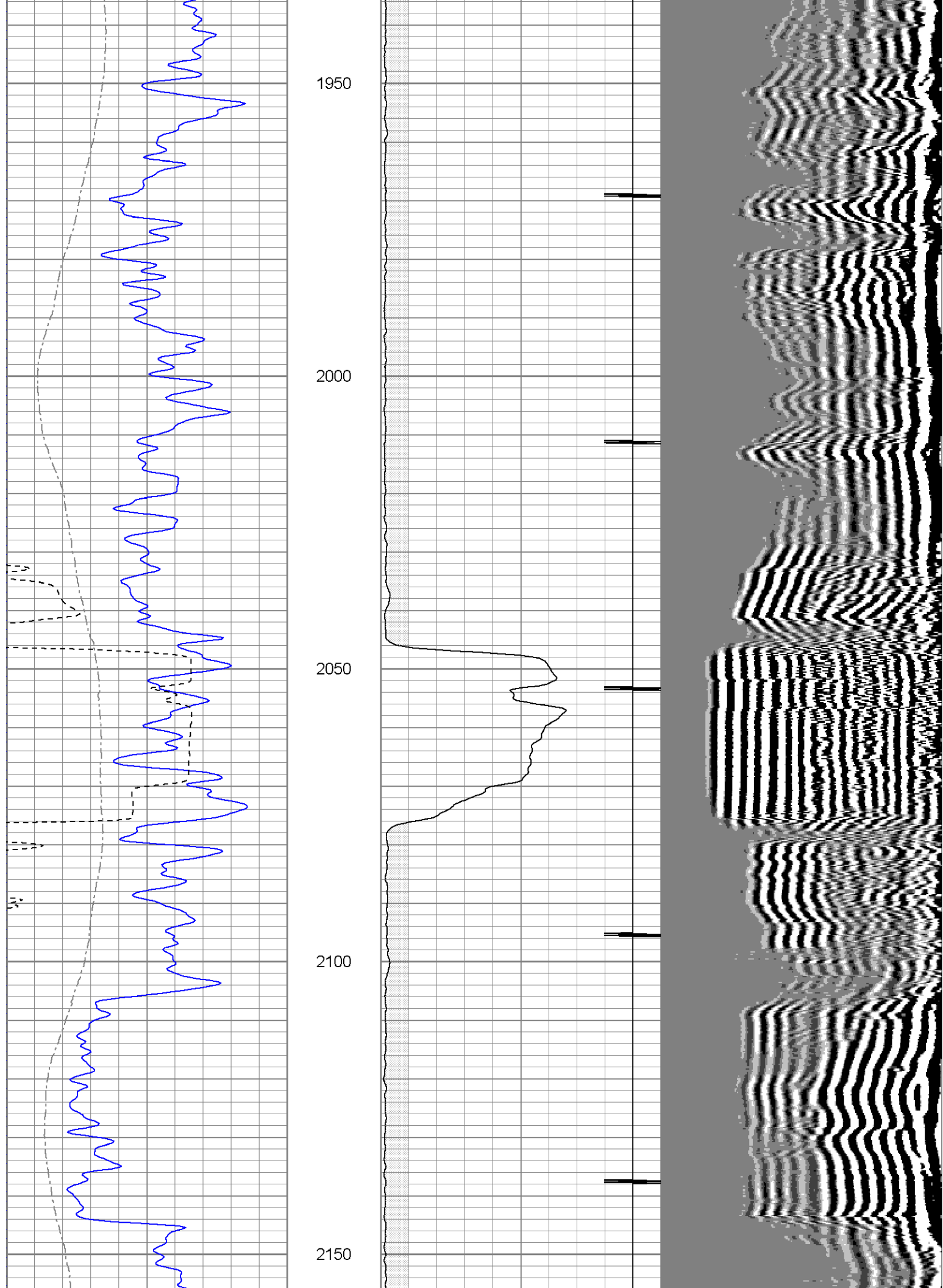
1250

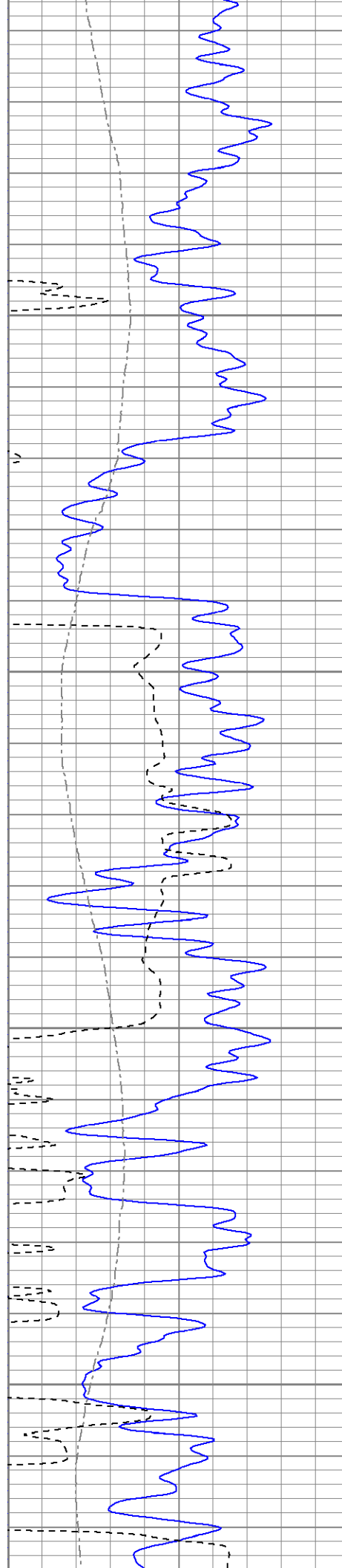










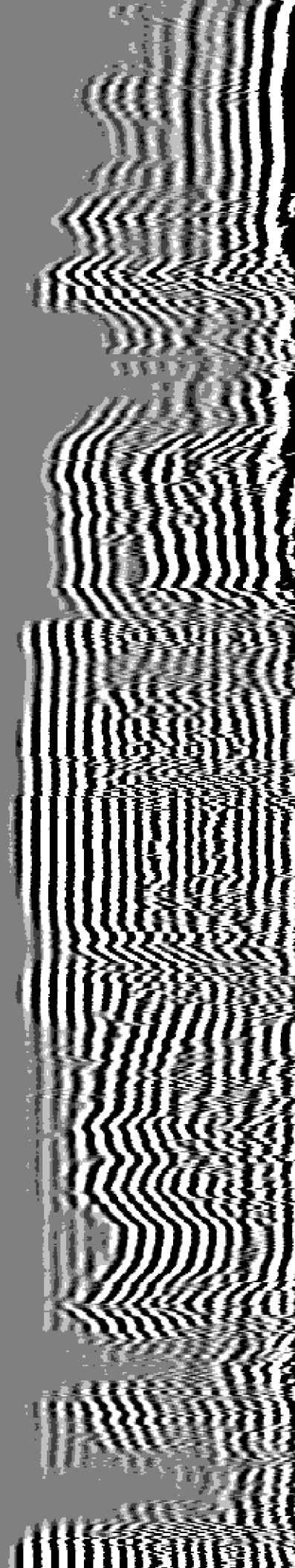
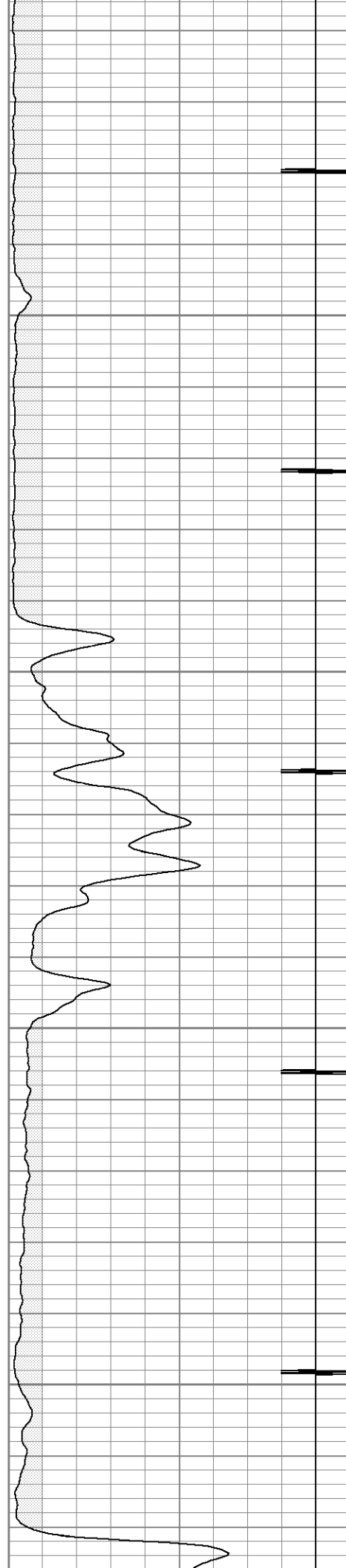


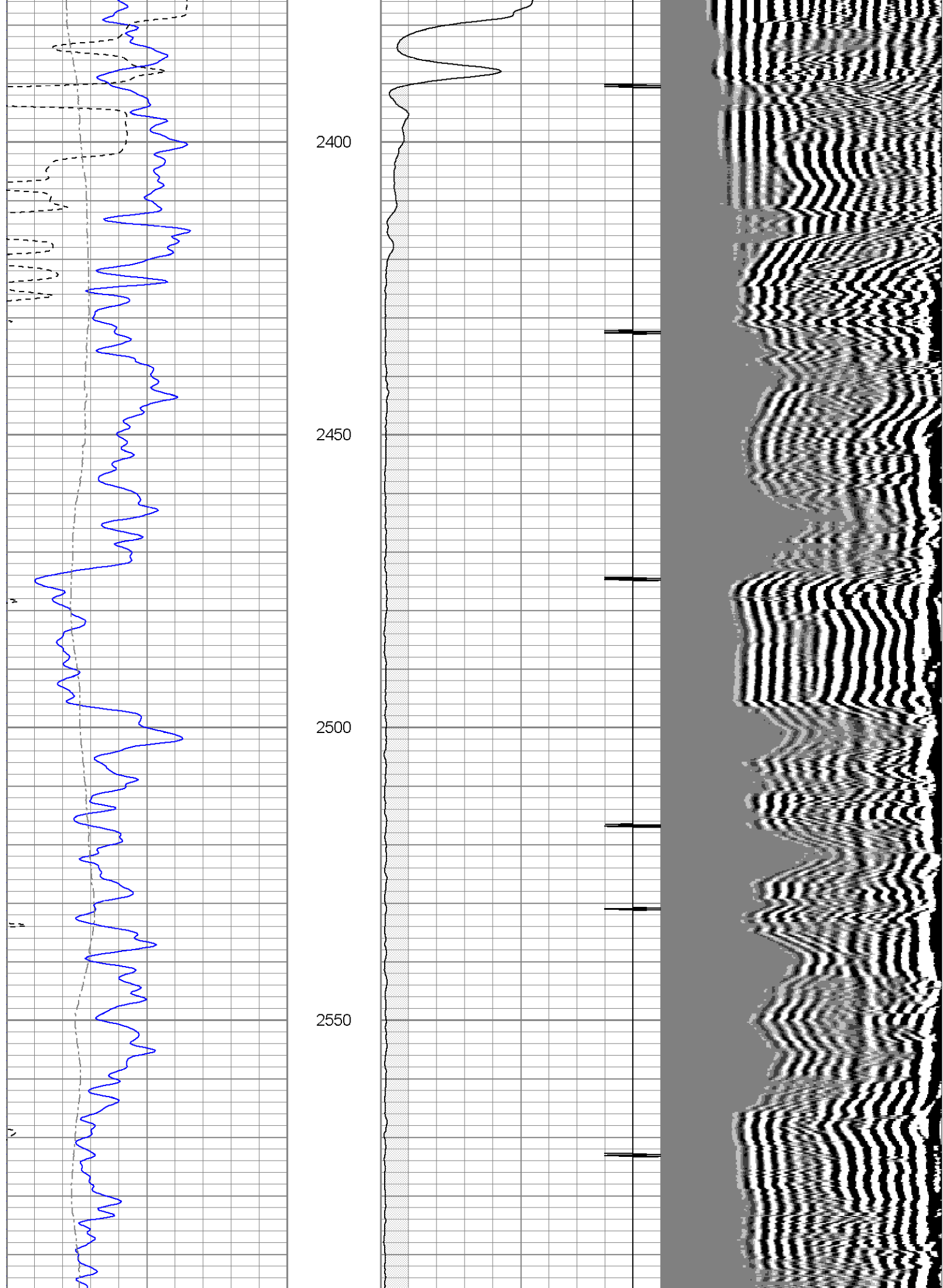
2200

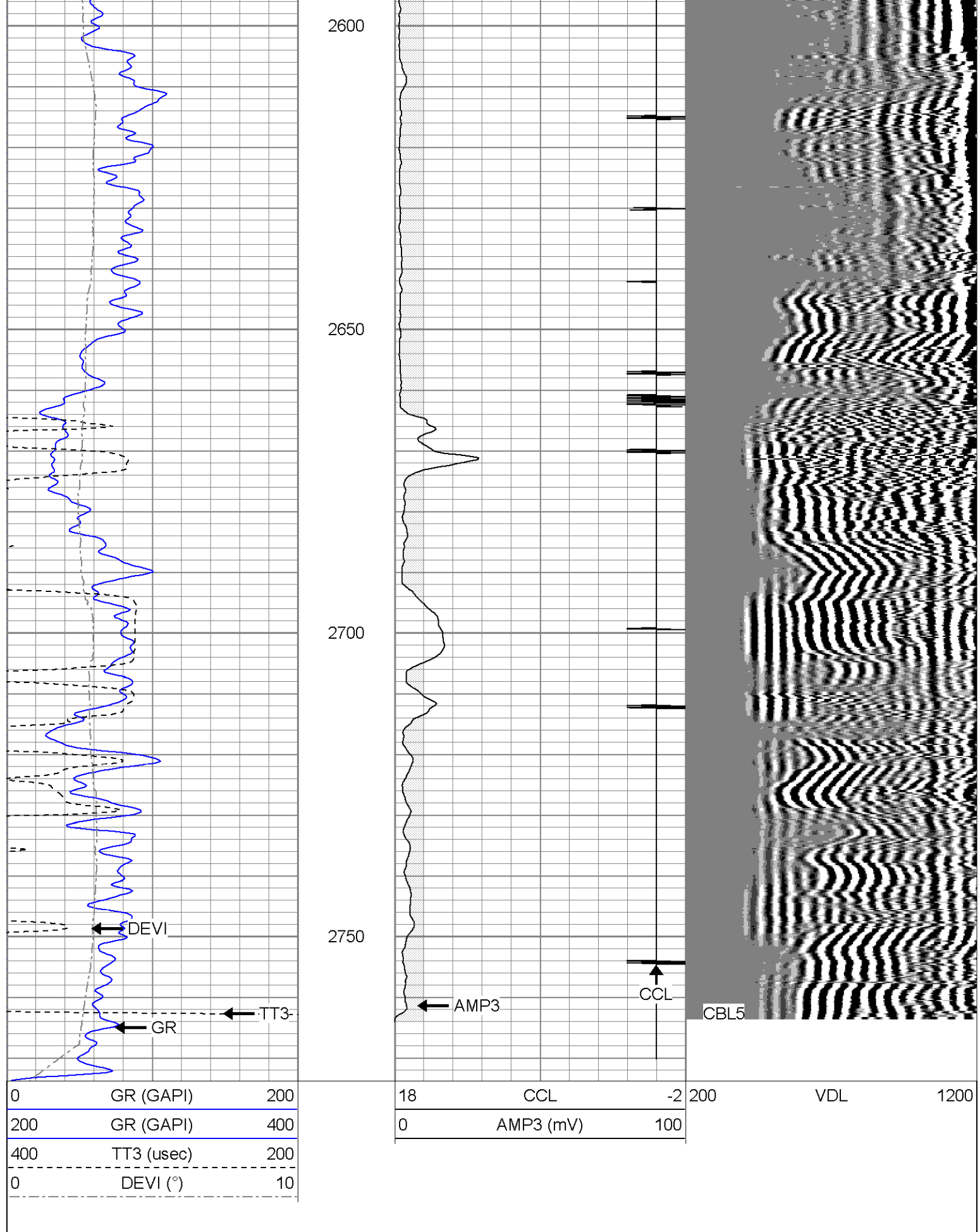
2250

2300

2350

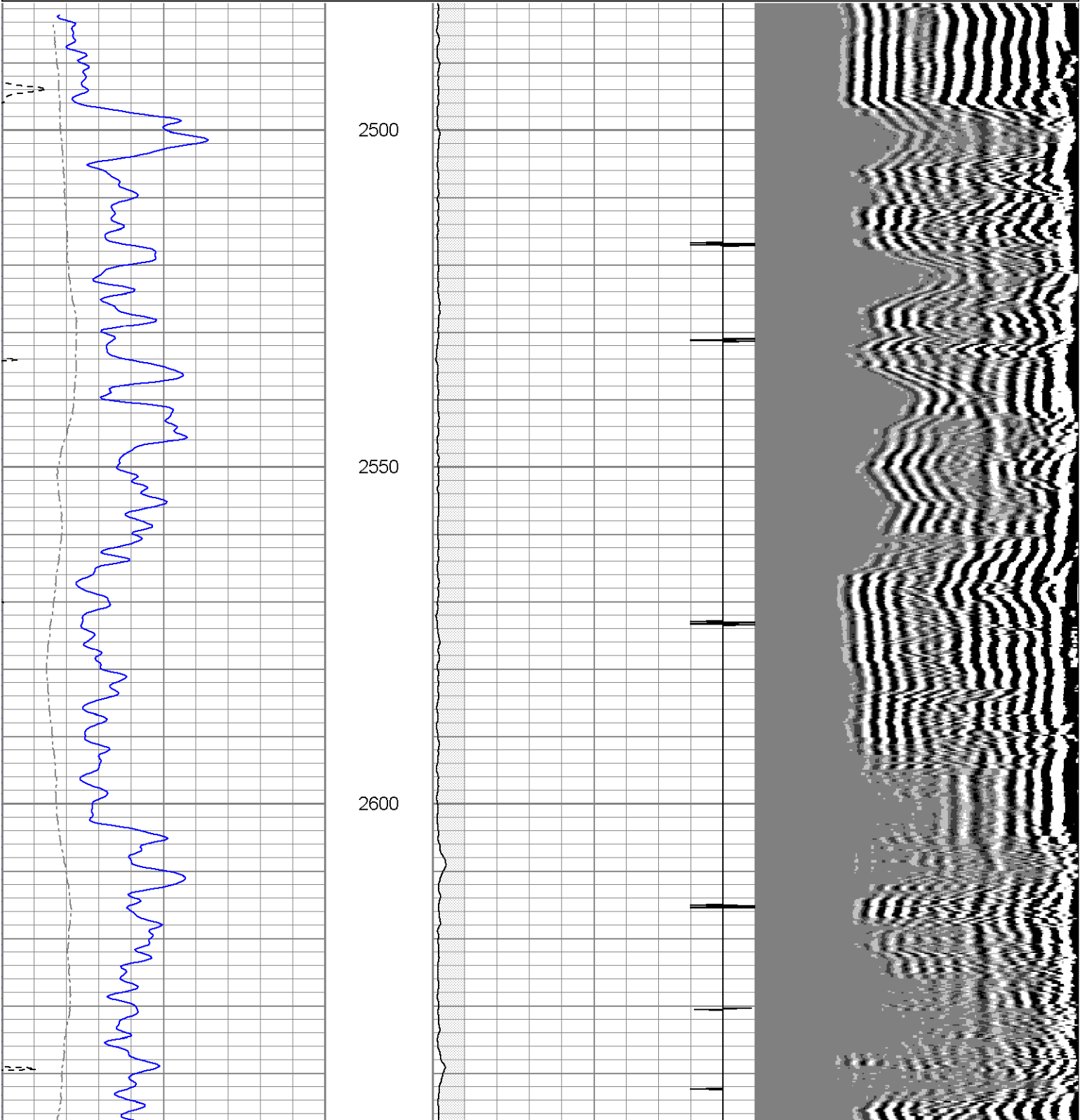


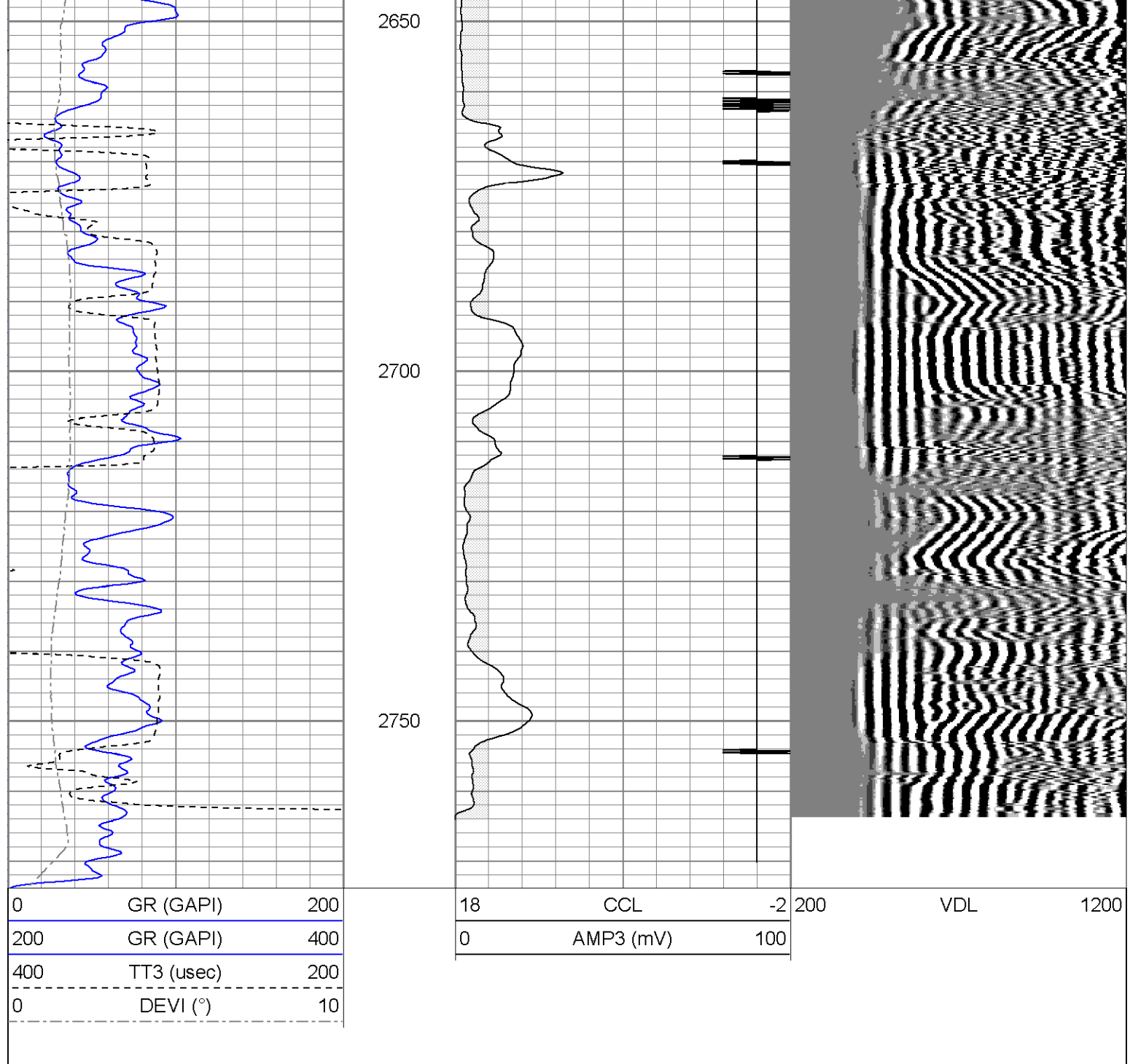




Database File: haught090711b.db
 Dataset Pathname: pass1
 Presentation Format: cbl
 Dataset Creation: Tue Dec 31 23:56:00 2002 by Log Open-Cased 071220
 Charted by: Depth in Feet scaled 1:240

0	GR (GAPI)	200	18	CCL	-2	200	VDL	1200
200	GR (GAPI)	400	0	AMP3 (mV)	100			
400	TT3 (usec)	200						
0	DEVI (°)	10						





Calibration Report

Database File: haught090711b.db
Dataset Pathname: pass1
Dataset Creation: Tue Dec 31 23:56:00 2002 by Log Open-Cased 071220

Gamma Ray Calibration Report

Serial Number: 080616
Tool Model: 275D_INC
Performed: Sun Jun 13 14:33:21 1993

Calibrator Value: 1.0 GAPI

Background Reading: 0.0 cps
Calibrator Reading: 1.0 cps


Sensitivity: 1.0000 GAPI/cps

Inclinometer Calibration Report

Performed:	Tue Jul 08 09:40:49 2008				
	Low Read.	High Read.	Low Ref.	High Ref.	
X Accelerometer	-3583.40	3594.20	-1.00	1.00	gee
Y Accelerometer	-3588.80	3532.80	-1.00	1.00	gee
Z Accelerometer					

Cement Bond Log Calibration Report

Serial Number:	080201				
Tool Model:	PROBEDIGITALCBL				
Performed:	Wed Jan 01 00:16:27 2003				
Depth:	77.0518	ft			
Casing Diameter:	5.5	in			
	3' Spacing		5' Spacing		
Signal Zero:	1		0		mV
Calibrated Amplitude:	85		85		mV
Reading at Signal Zero:	0.00690918		0.00671387		V
Reading in Free Pipe:	0.665		0.550854		V
Gain:	127.642		156.21		
Offset:	0.118099		-1.04877		

Sensor	Offset (ft)	Schematic	Description	Len (ft)	OD (in)	Wt (lb)
			CHD-None (0)	0.75	1.44	5.00
WVF3	11.15		CBL-PROBEDIGITALCBL (080201)	8.75	2.75	106.50
WVF5	10.15		PROBE DIGITAL CBL			
			CENT-Star (star1)	0.29	1.69	0.50
CCL	3.50		CENT-A (ARTEX325S)	2.11	3.25	20.00
ACCX	1.83		CENTRALIZER WITHOUT GAMMA RAY FOR ARTEX3.25S TOOL			
ACCY	1.83					
ACCZ	1.83		GR-275D_INC (080616)	4.50	2.75	50.00
GR	0.83		2-3/4" GR-CCL with Inclination			
		Dataset:	haught090711b.db: field/well/run1/pass2			
		Total Length:	16.40 ft			
		Total Weight:	182.00 lb			
		O.D.	3.25 in			