



# Cement Bond Log

Company	Pioneer Natural Resources	Company	Pioneer Natural Resources
Well	Haught 42-30	Well	Haught 42-30
Field	Purgatorie River	Field	Purgatorie River
County	Las Animas	County	Las Animas
State	Colorado	State	Colorado
Location:	APL # : 05 071 09710 00	Other Services	
SEC 30 TWP 32S RGE 67W	2394' FNL & 1037' FEL	DEVI	
Permanent Datum	GL	Elevation	
Log Measured From	KB 9' AGL		
Drilling Measured From	KB		
Date	8-3-11		
Run Number	One		
Depth Driller	2905'		
Depth Logger	2155'		
Bottom Logged Interval	2155'		
Top Log Interval	200'		
Open Hole Size	7 7/8		
Type Fluid	water		
Density / Viscosity	///		
Max. Recorded Temp.	///		
Estimated Cement Top	2074'		
Time Well Ready	8:15 P.M.		
Time Logger on Bottom	12:25 P.M.		
Equipment Number	T590		
Location	Trinidad		
Recorded By	T. Patterson		
Witnessed By	Mr. Terry Beasley		
Run Number	Bit	From	To
Casing Record	Size	Wgt/Ft	Top
Surface String	8 5/8"		Bottom
Prot. String			392'
Production String	5 1/5"		TD
Liner			

<<< Fold Here >>>

All interpretations are opinions based on inferences from electrical or other measurements and we cannot and do not guarantee the accuracy or correctness of any interpretation, and we shall not, except in the case of gross or willful negligence on our part, be liable or responsible for any loss, costs, damages, or expenses incurred or sustained by anyone resulting from any interpretation made by any of our officers, agents or employees. These interpretations are also subject to our general terms and conditions set out in our current Price Schedule.

## Comments

Directions:

Wet Canyon, San Pablo, @ Y at Dude canyon stay right, fourth left to location.



## Main Pass

Database File: haught8311b.db  
Dataset Pathname: pass3  
Presentation Format: cbldig  
Dataset Creation: Wed Aug 03 12:21:16 2011 by Log Open-Cased 110302  
Charted by: Depth in Feet scaled 1:240

400	Travel Time (usec)	200
0	GR (GAPI)	200
0	DEVI (°)	10

0	Amplitude (mV)	100
9	Collar Locator	-1

200 Variable Density 1200

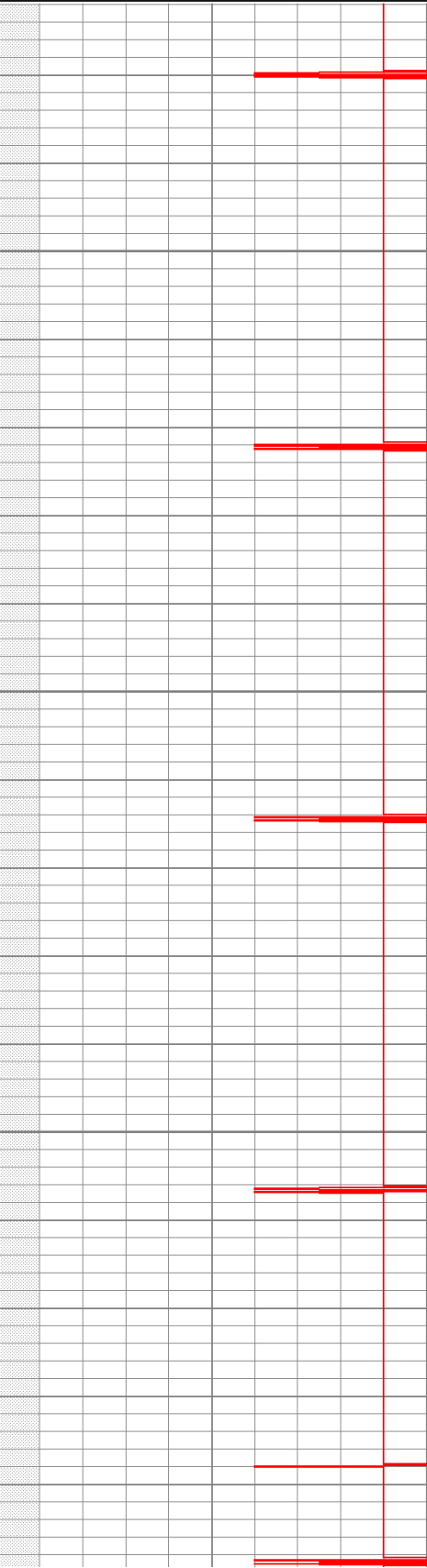


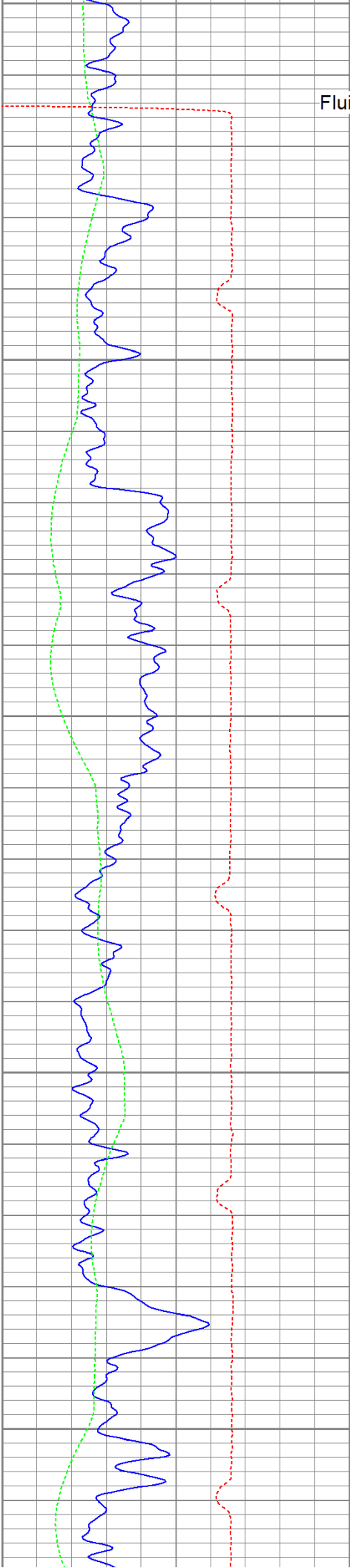
50

100

150

200





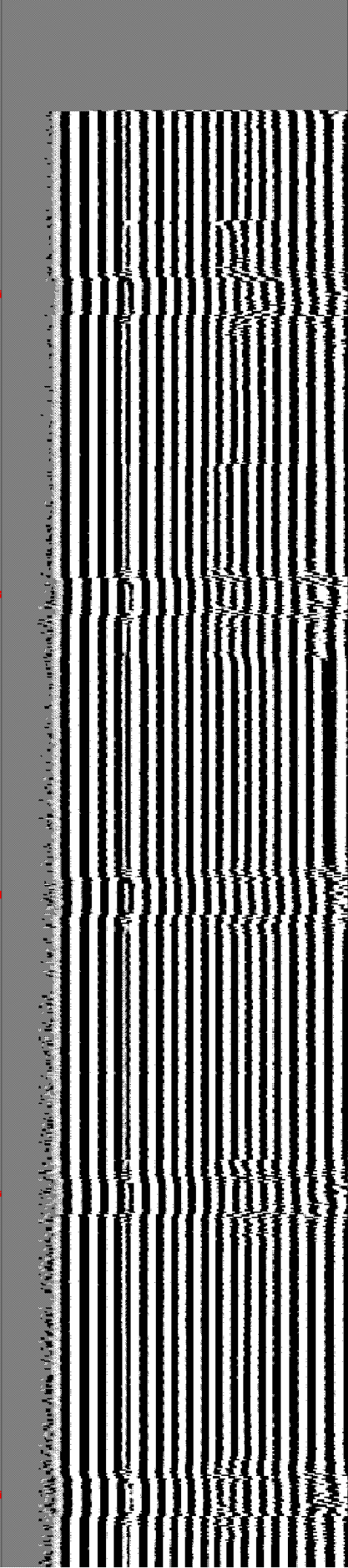
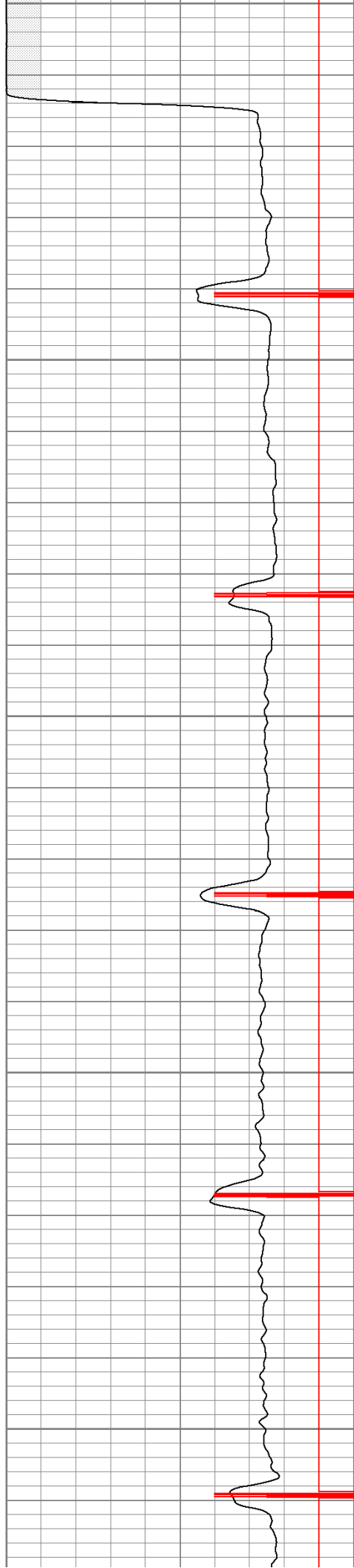
Fluid Level →

250

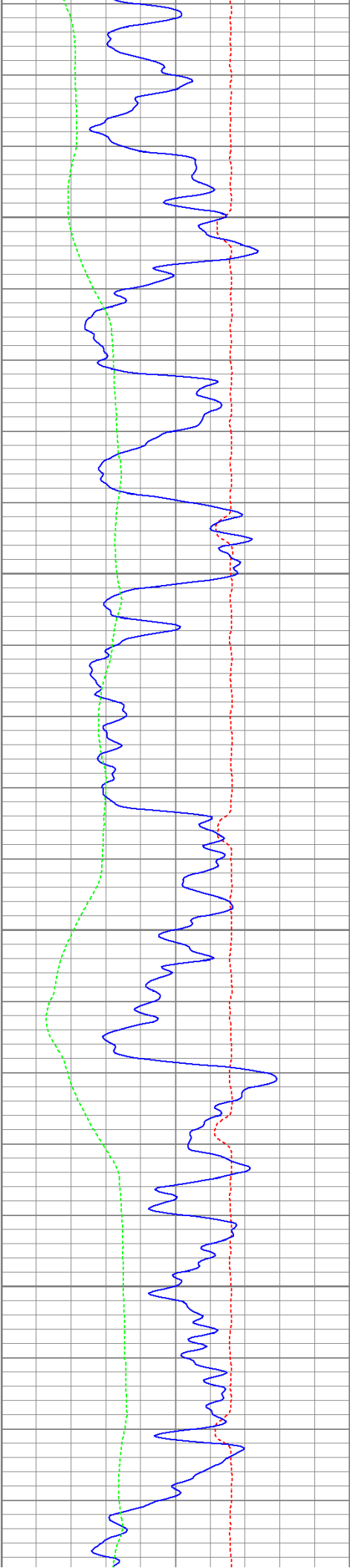
300

350

400





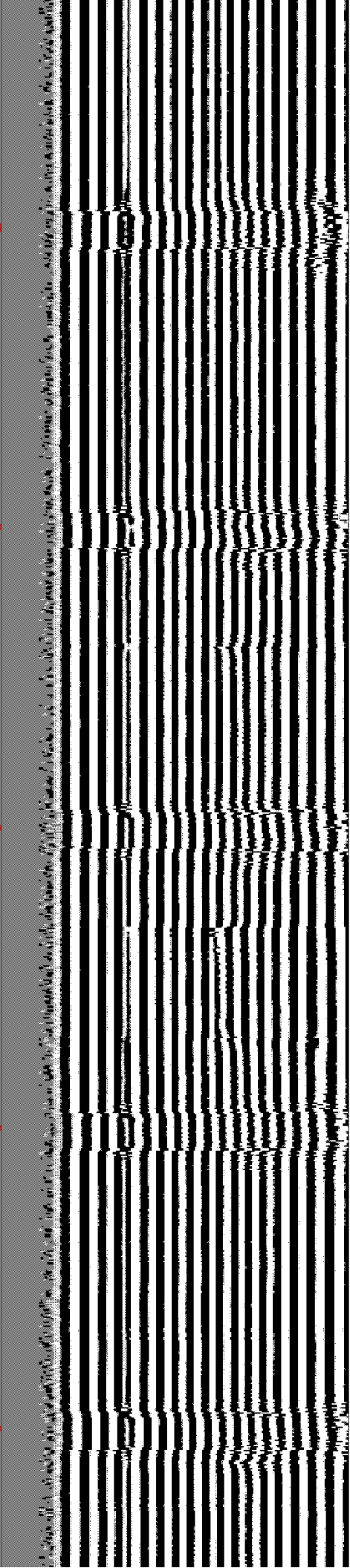
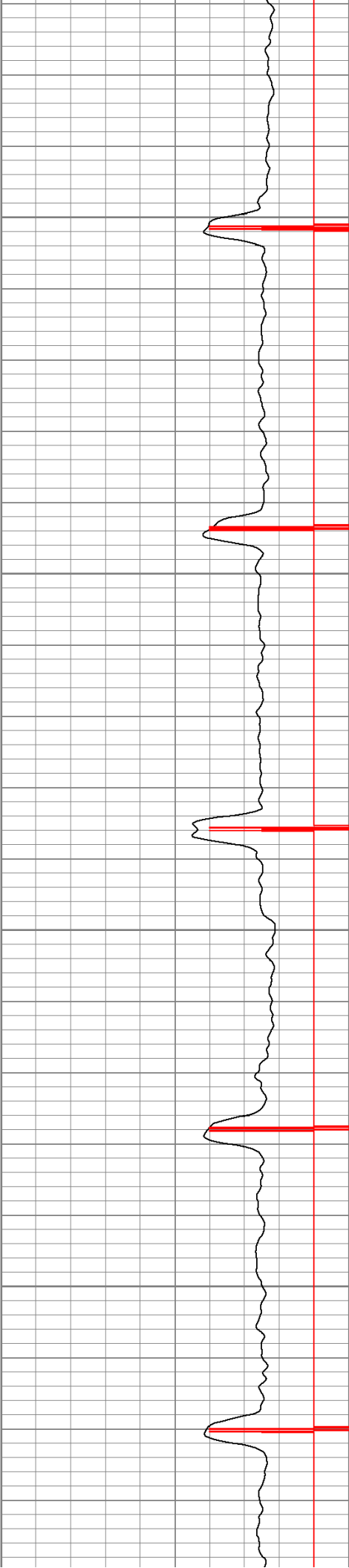


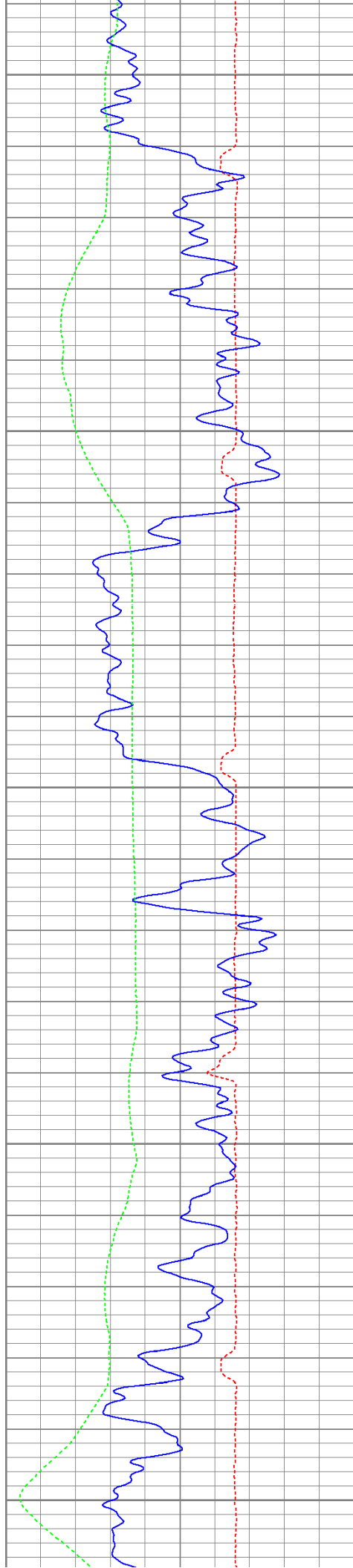
450

500

550

600





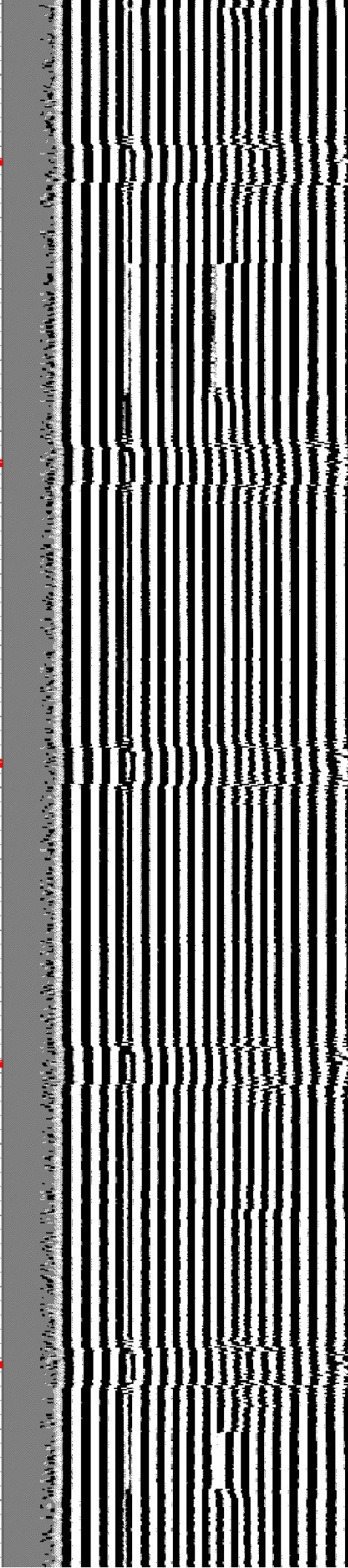
650

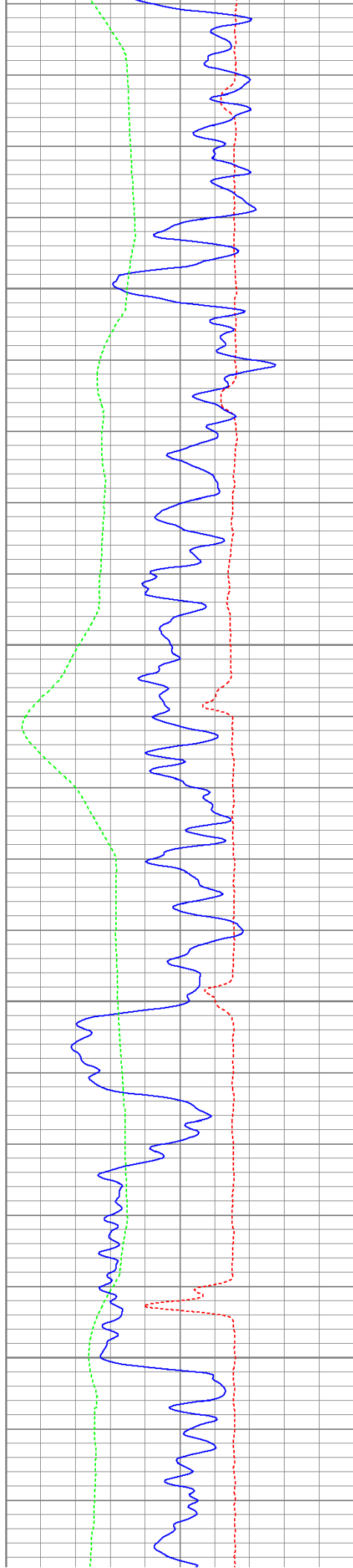
700

750

800

850



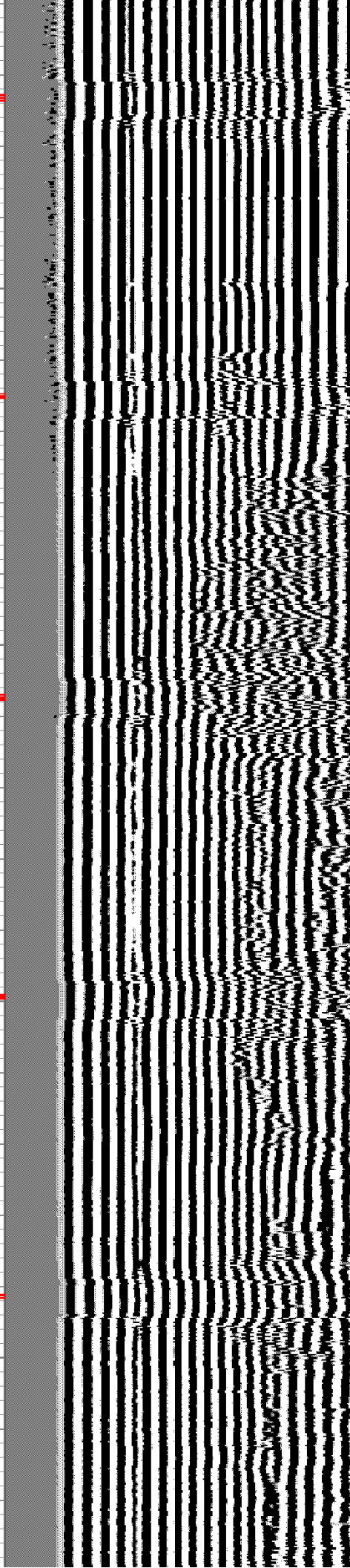


900

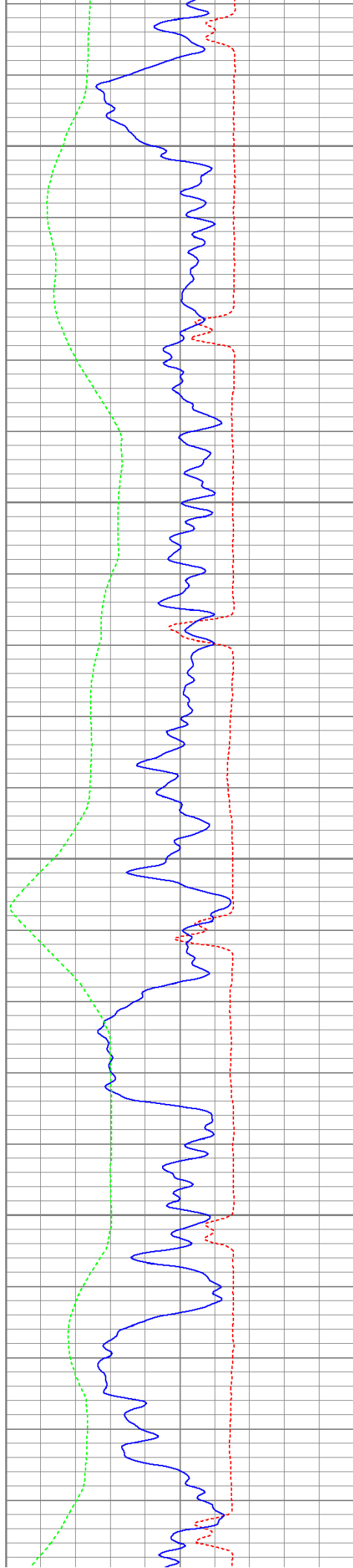
950

1000

1050







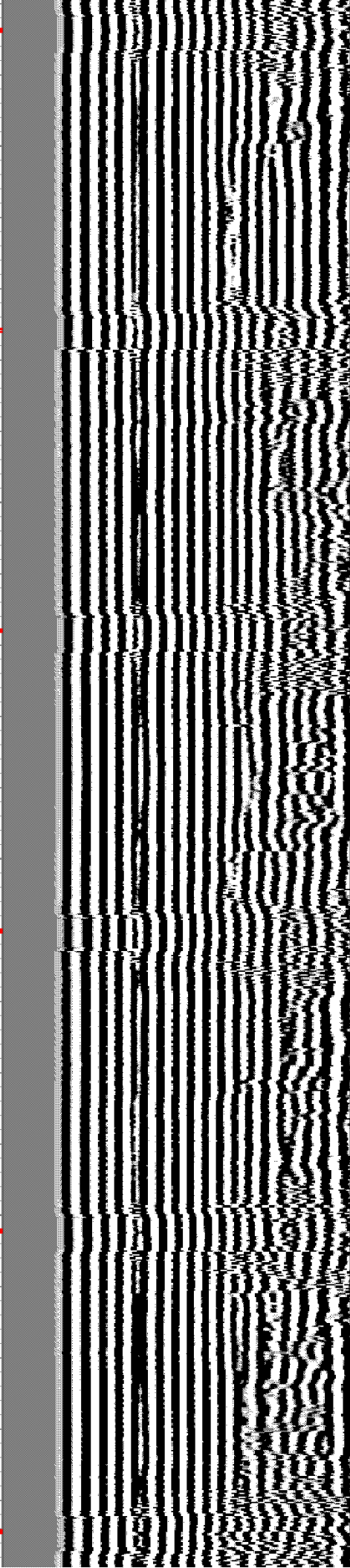
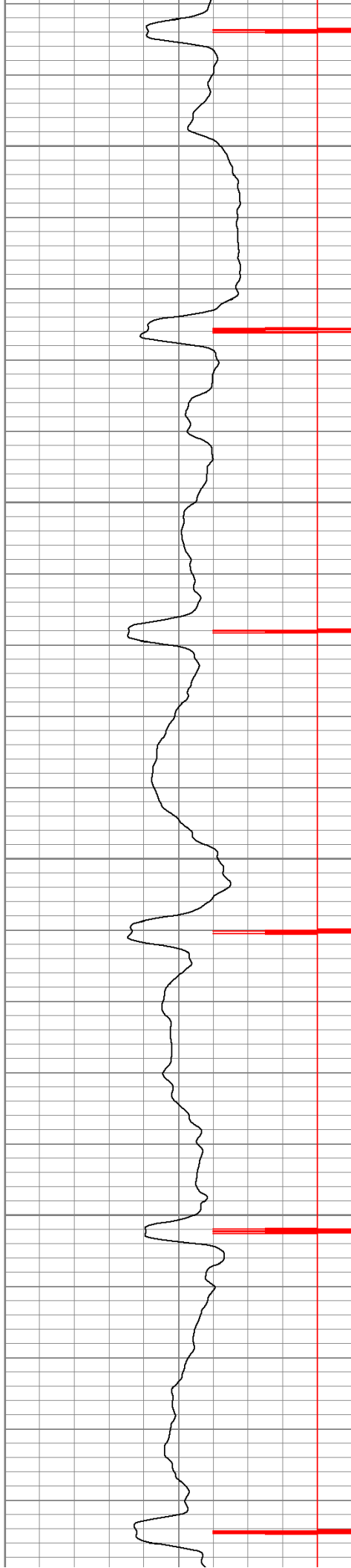
1100

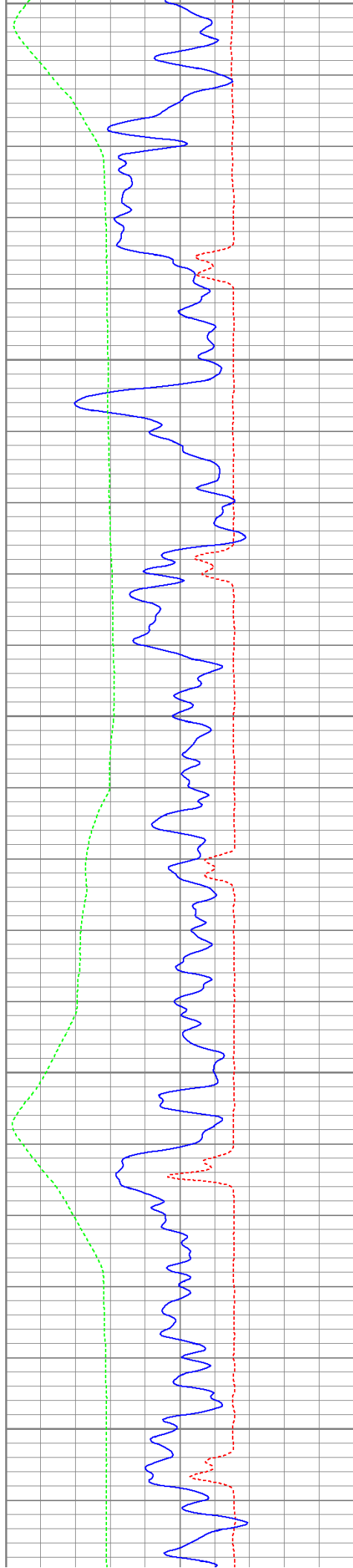
1150

1200

1250

1300





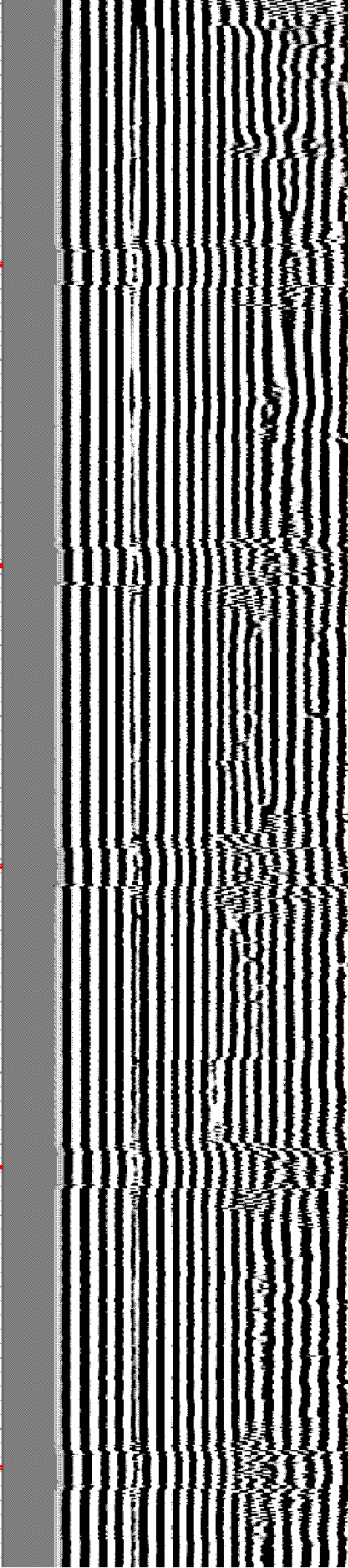
1300

1350

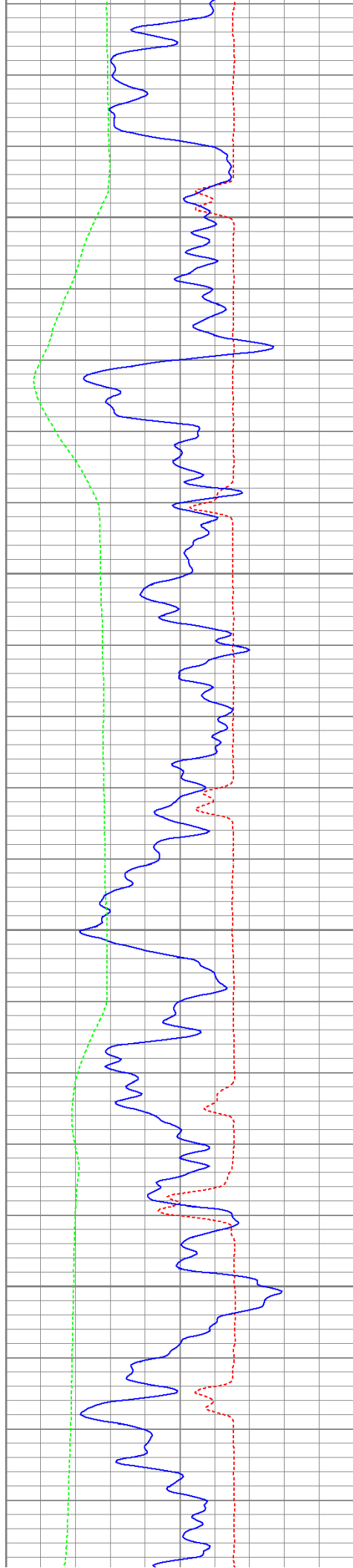
1400

1450

1500





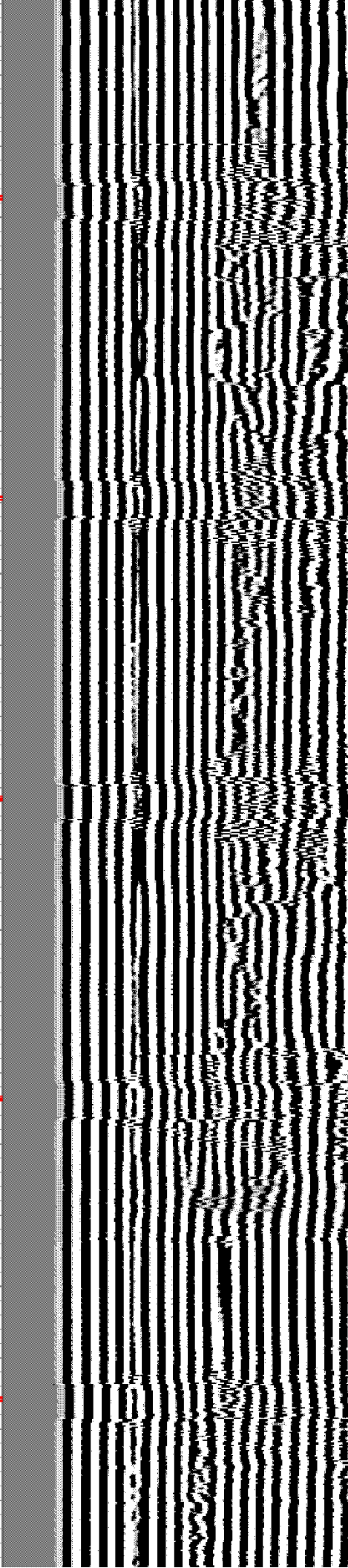
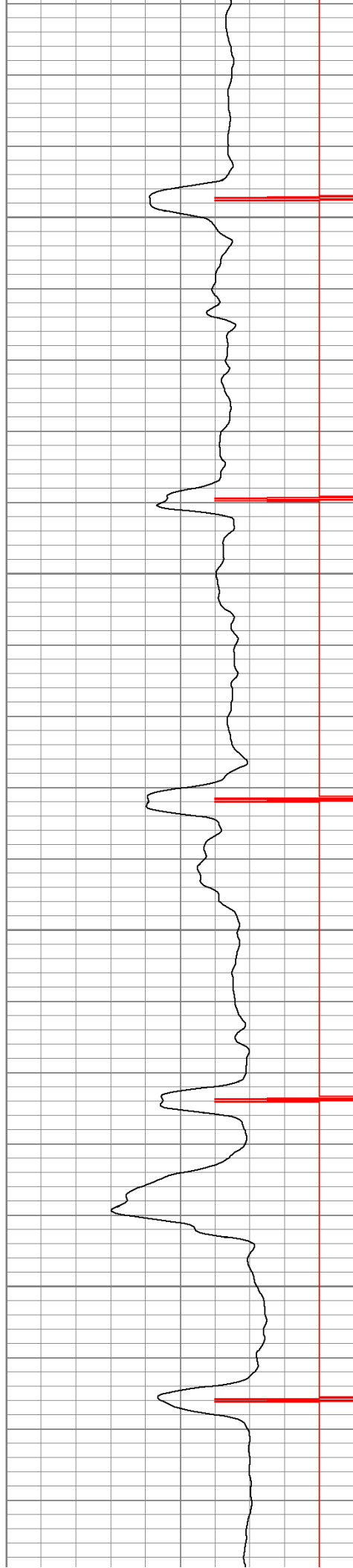


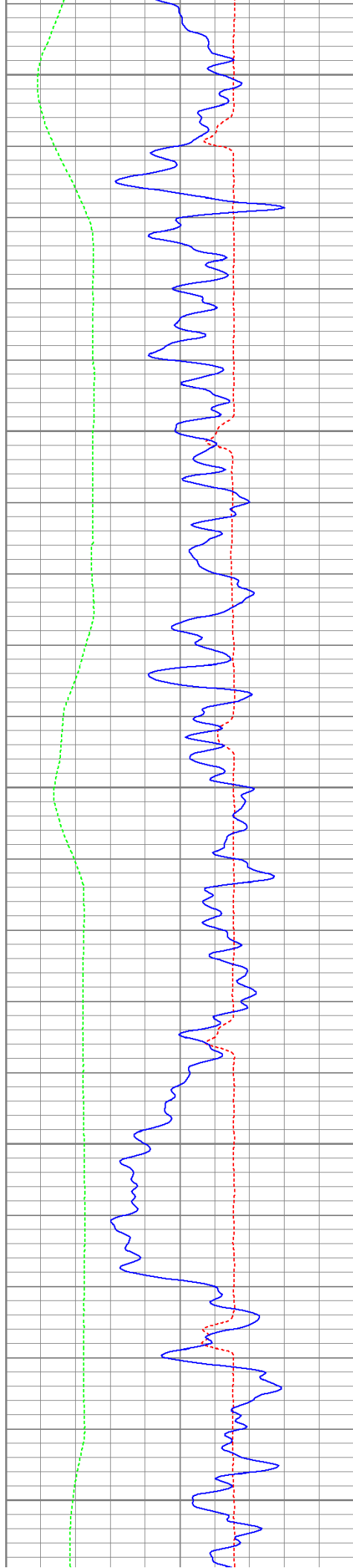
1550

1600

1650

1700





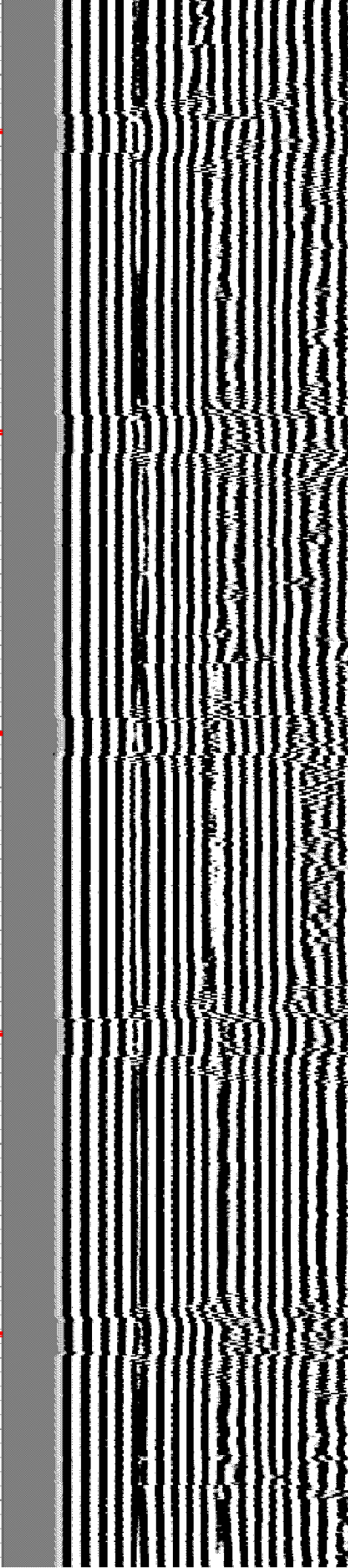
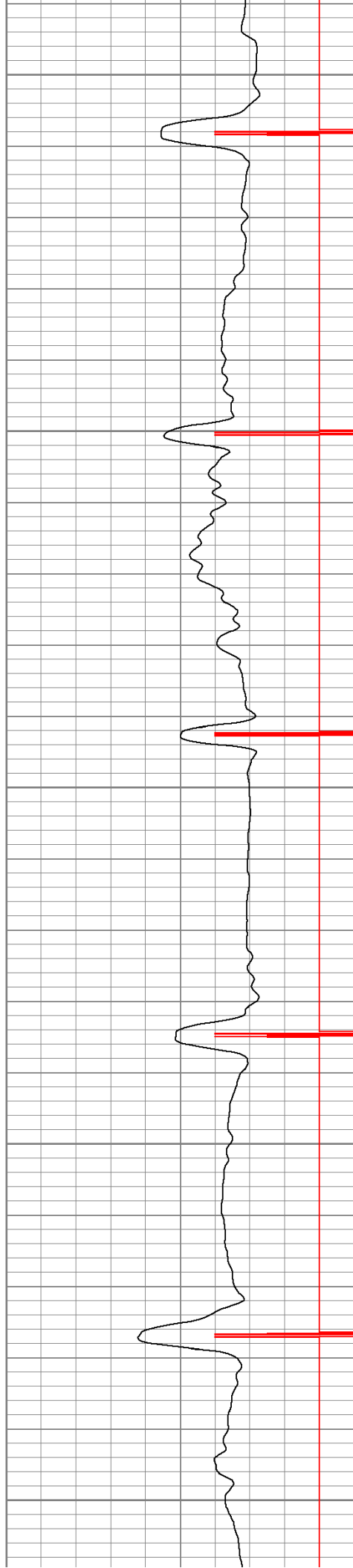
1750

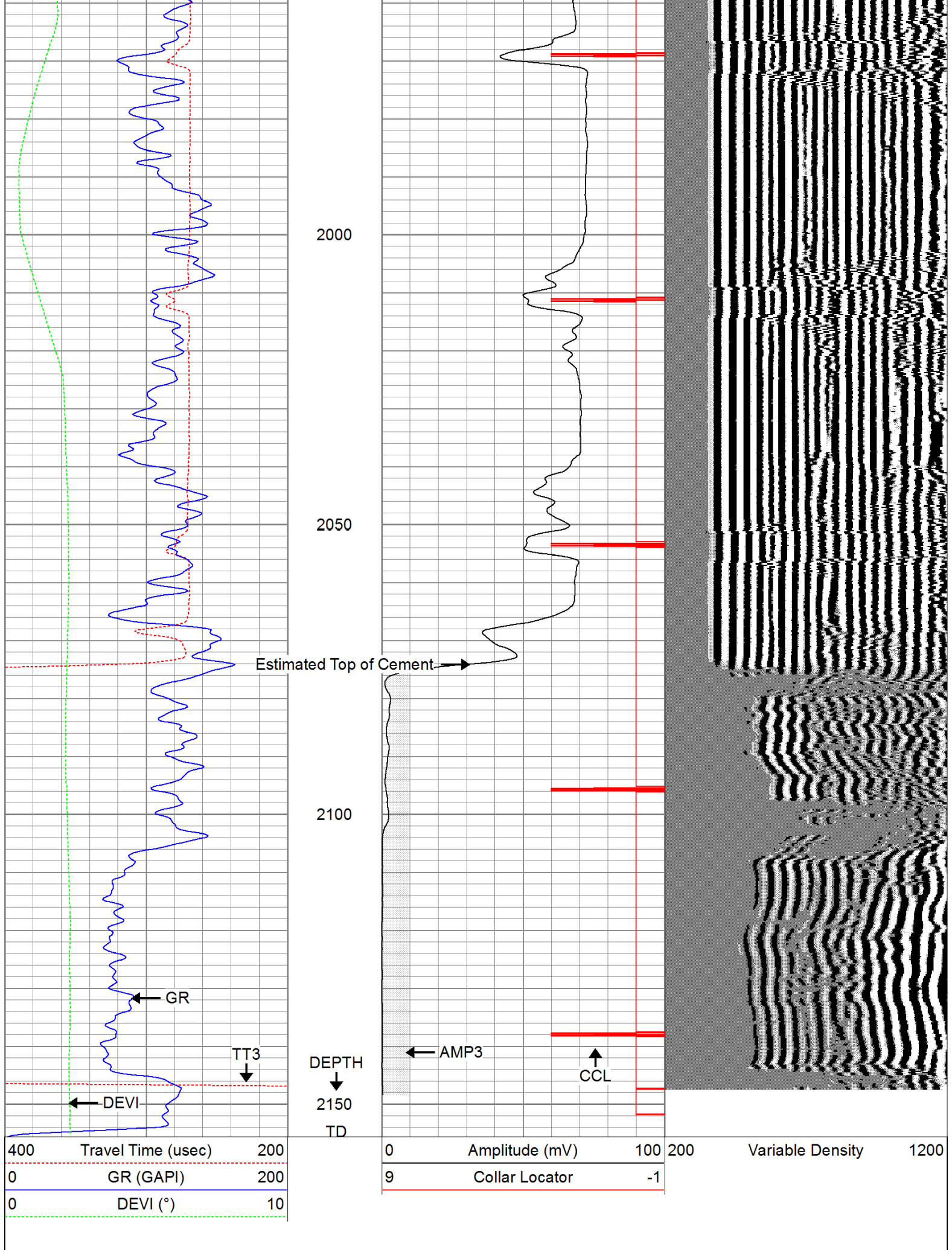
1800

1850

1900

1950







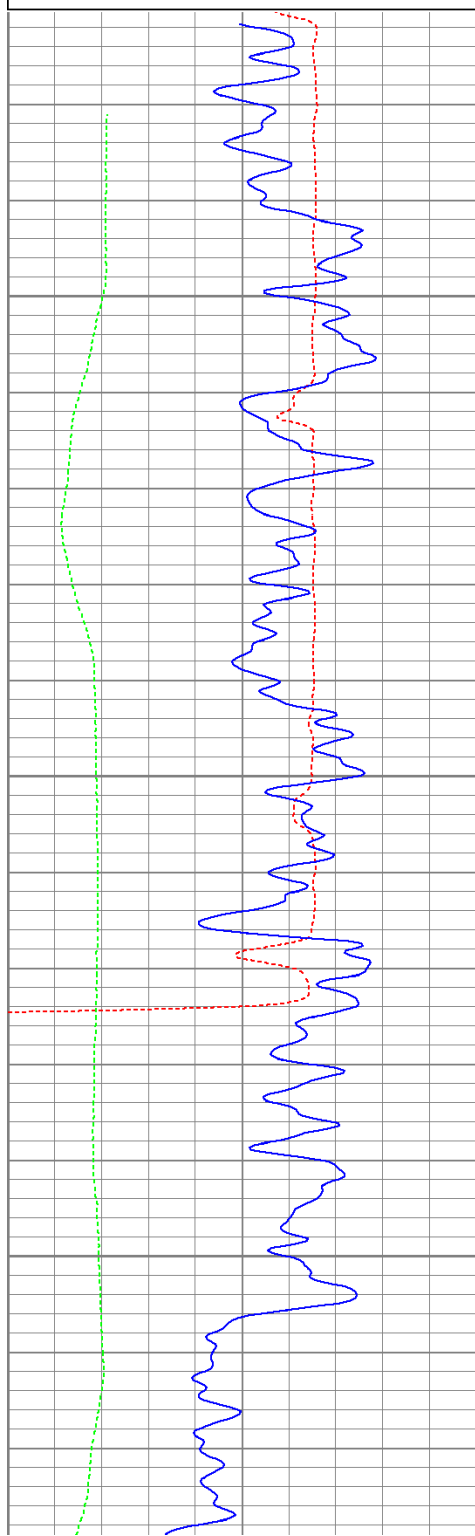
# Repeat Pass

Database File: haught8311b.db  
 Dataset Pathname: pass2  
 Presentation Format: cbldig  
 Dataset Creation: Wed Aug 03 12:14:35 2011 by Log Open-Cased 110302  
 Charted by: Depth in Feet scaled 1:240

400	Travel Time (usec)	200
0	GR (GAPI)	200
0	DEVI (°)	10

0	Amplitude (mV)	100
9	Collar Locator	-1

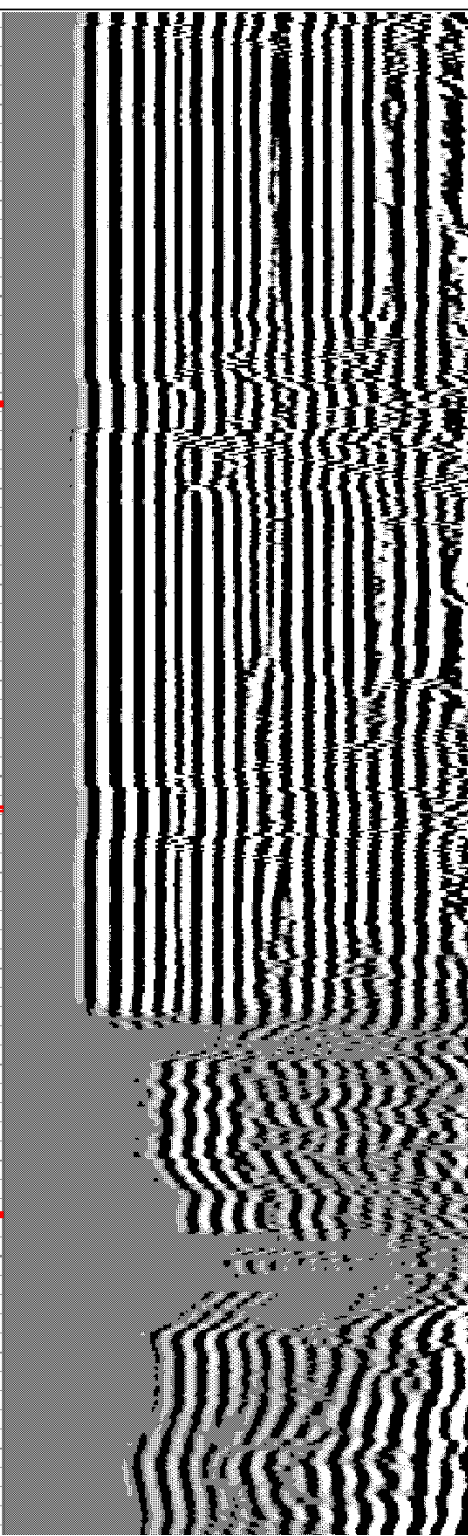
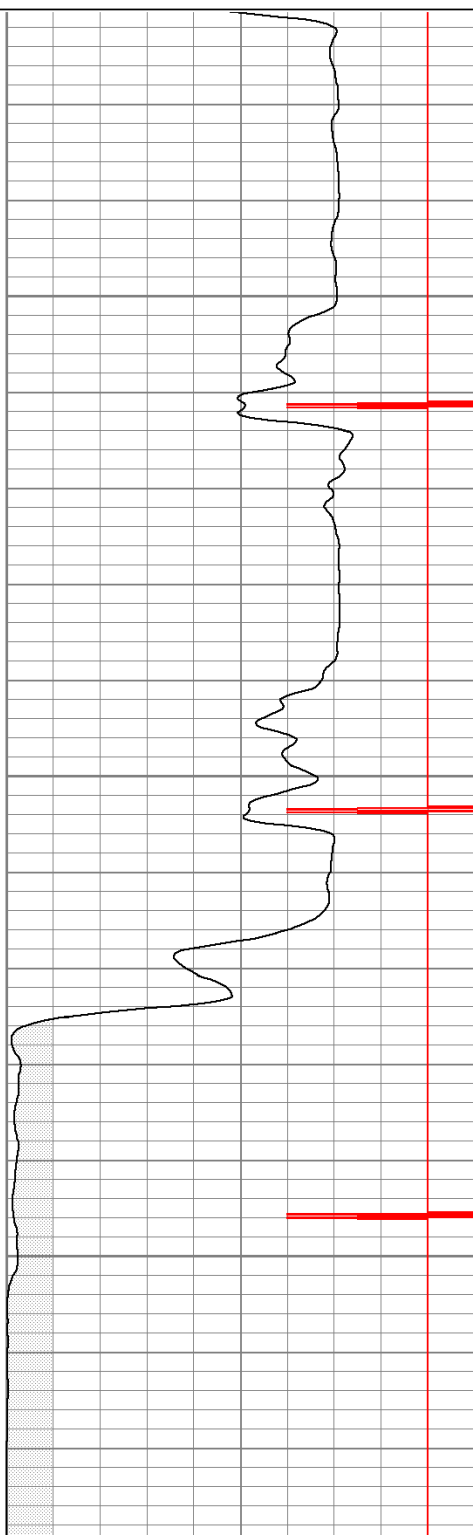
200 Variable Density 1200

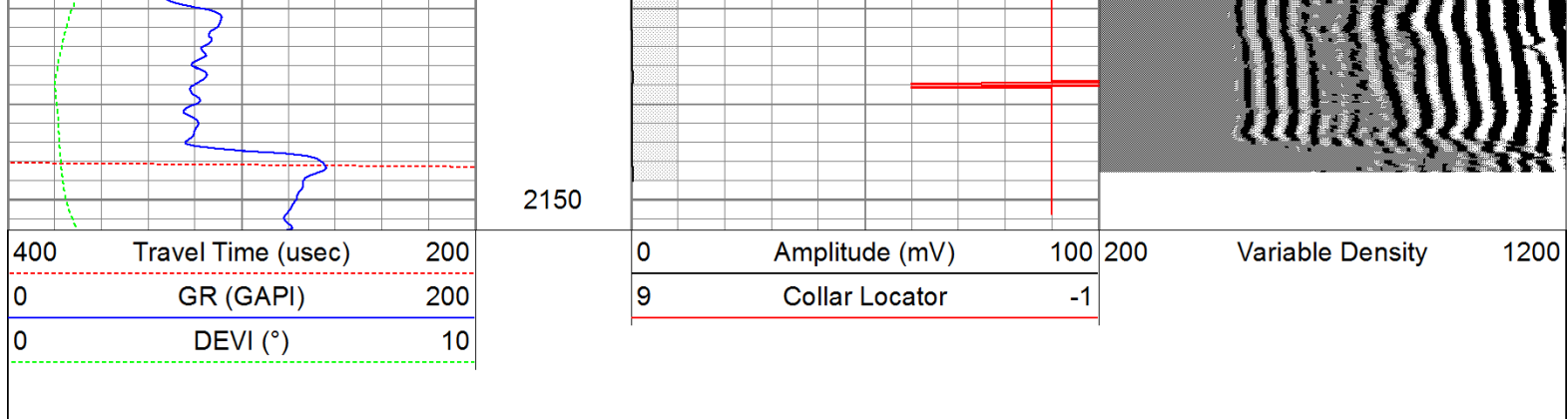


2000

2050

2100





Calibration Report					
Database File:	haught8311b.db				
Dataset Pathname:	pass2				
Dataset Creation:	Wed Aug 03 12:14:35 2011 by Log Open-Cased 110302				
Gamma Ray Calibration Report					
Serial Number:	080616				
Tool Model:	275D_INC				
Performed:	Wed May 04 17:31:09 2011				
Calibrator Value:	200.0	GAPI			
Background Reading:	50.0	cps			
Calibrator Reading:	250.0	cps			
Sensitivity:	0.7000	GAPI/cps			
Inclinometer Calibration Report					
Performed:	Wed May 04 17:39:54 2011				
	Low Read.	High Read.	Low Ref.	High Ref.	
X Accelerometer	-3585.20	3595.40	-1.00	1.00	gee
Y Accelerometer	-3619.40	3520.00	-1.00	1.00	gee
Z Accelerometer					
Cement Bond Log Calibration Report					
Serial Number:	081024				
Tool Model:	PROBEDIGITALCBL				
Performed:	Tue Jul 19 09:25:23 2011				
Depth:	93.4615	ft			
Casing Diameter:	5.5	in			
	3' Spacing	5' Spacing			
Signal Zero:	0	0	mV		
Calibrated Amplitude:	85	85	mV		
Reading at Signal Zero:	-0.00874023	-0.0092041	V		
Reading in Free Pipe:	1.72476	1.66304	V		
Gain:	49.0339	50.83			
Offset:	0.428567	0.467844			

Sensor	Offset (ft)	Schematic	Description	Len (ft)	OD (in)	Wt (lb)
--------	-------------	-----------	-------------	----------	---------	---------

