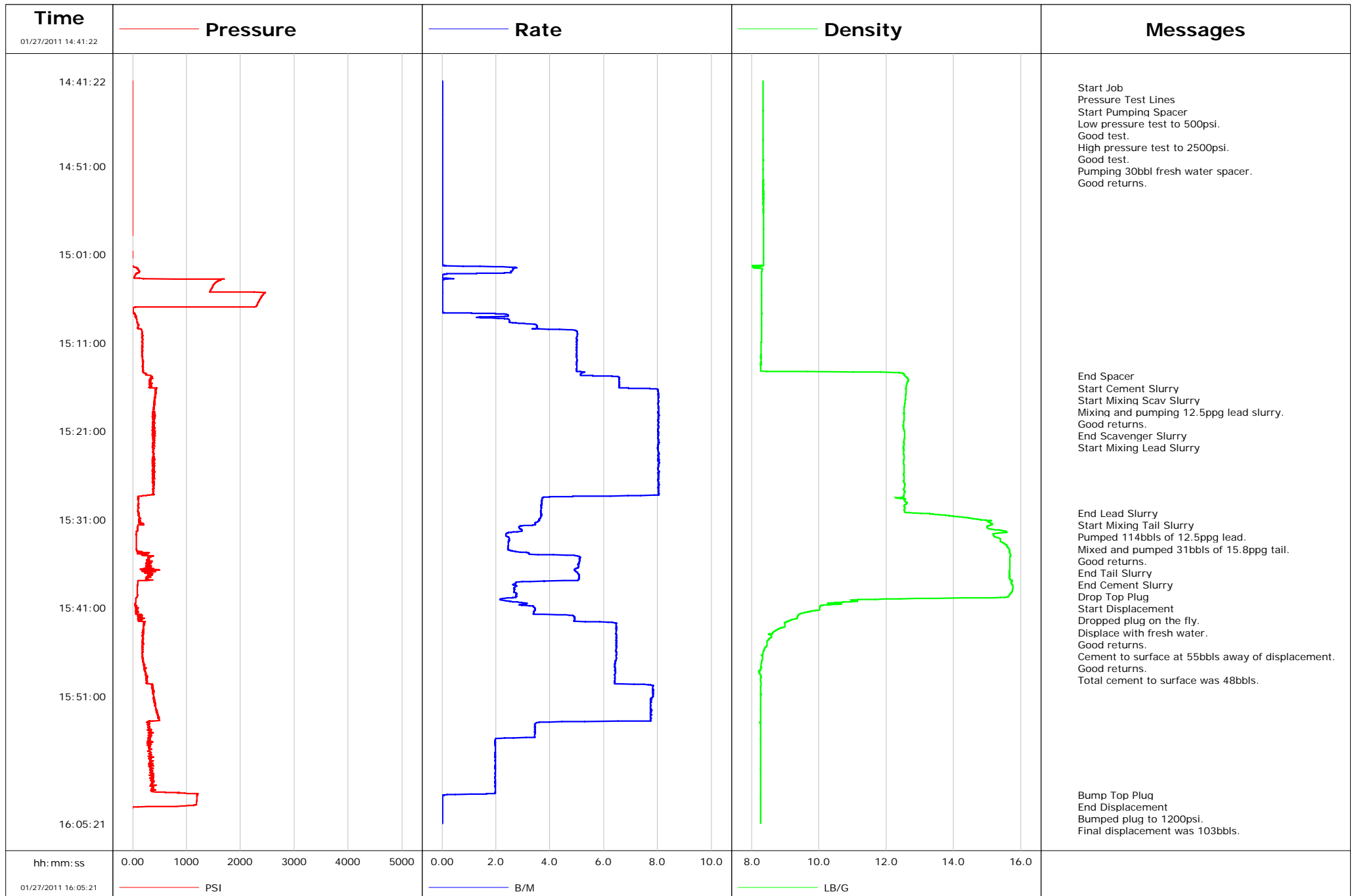


Well Benjamin Fed 28-14C
Field Mamm Creek
Engineer Jeff Patterson
Country United States

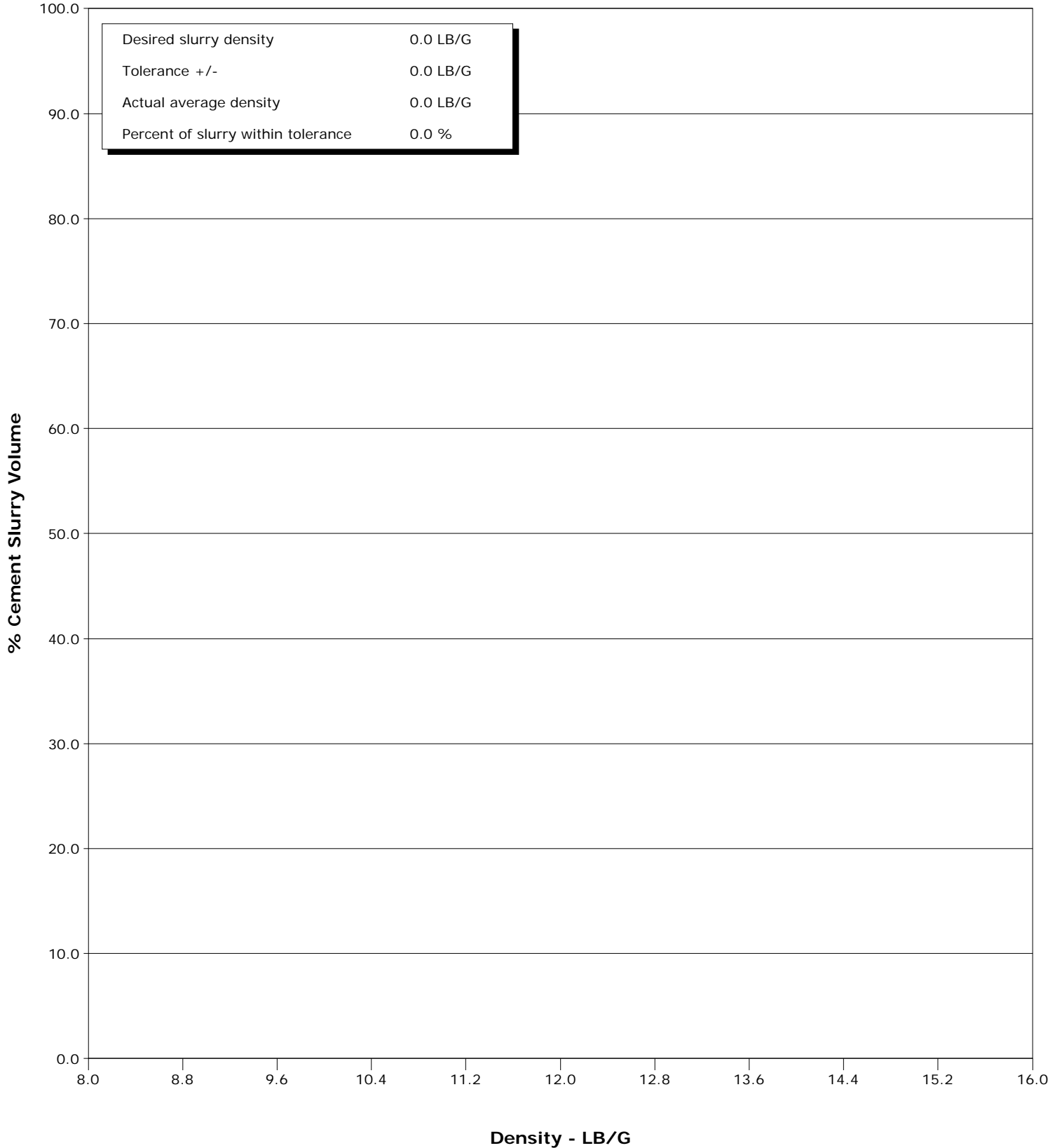
Client ENCANA
SIR No. BAD4-00268
Job Type 9 5/8" Surface
Job Date 01-27-2011



Well Benjamin Fed 28-14C
Field Mamm Creek
Engineer Jeff Patterson
Country United States

Client ENCANA
SIR No. BAD4-00268
Job Type 9 5/8" Surface
Job Date 01-27-2011

Cement Slurry - 01/27/2011 14:41:22 to 01/27/2011 14:41:37



				Customer ENCANA			Job Number BAD4-00268		
Well Benjamin Fed 28-14C Benjamin Fed 28-14C			Location (legal) K28NW			Schlumberger Location Grand Junction, Colorado			Job Start Jan/27/2011
Field Mamm Creek		Formation Name/Type Shale		Deviation deg	Bit Size 12.3 in		Well MD 1378.0 ft		Well TVD 1378.0 ft
County GARFIELD		State/Province Colorado		BHP psi	BHST 98 degF		BHCT 90 degF		Pore Press. Gradient lb/gal
Well Master 0631233182		API/UWI 05045201800000							
Rig Name Nabors M-15	Drilled For Gas		Service Via Land		Casing/Liner				
	Depth, ft	Size, in	Weight, lb/ft	Grade	Thread				
Offshore Zone	Well Class New		Well Type Development		1378.0	9.6	36.0	J55	8RD
	0.0	0.0	0.0						
Drilling Fluid Type		Max. Density lb/gal	Plastic Viscosity cP		Tubing/Drill Pipe				
	T/D	Depth, ft	Size, in	Weight, lb/ft	Grade	Thread			
Service Line Cementing	Job Type 9 5/8" Surface								
Max. Allowed Tub. Press 2500 psi	Max. Allowed Ann. Press psi		WH Connection 9 5/8" Cement Head		Perforations/Open Hole				
	Top, ft	Bottom, ft	shot/ft	No. of Shots	Total Interval ft				
	ft	ft					Diameter in		
	ft	ft							
Service Instructions Cement 9 5/8" Surface casing with 303sks 12.5ppg lead and 149sks 15.8ppg tail. Displace 103bbbls water.		Treat Down Casing	Displacement 103.0 bbl		Packer Type		Packer Depth ft		
	Tubing Vol. bbl	Casing Vol. 106.5 bbl		Annular Vol. 80.0 bbl		Openhole Vol. 190.0 bbl			
Casing/Tubing Secured <input checked="" type="checkbox"/>	1 Hole Vol. Circulated prior to Cement <input checked="" type="checkbox"/>		Casing Tools			Squeeze Job			
Lift Pressure 682 psi	Shoe Type Guide		Squeeze Type						
Pipe Rotated <input type="checkbox"/>	Pipe Reciprocated <input type="checkbox"/>		Shoe Depth 1378.0 ft	Tool Type					
No. Centralizers	Top Plugs 1	Bottom Plugs		Stage Tool Type		Tool Depth ft			
Cement Head Type Single	Stage Tool Depth ft		Tail Pipe Size in						
Job Scheduled For Jan/27/2011	Arrived on Location Jan/27/2011		Leave Location Jan/27/2011		Collar Type Float		Tail Pipe Depth ft		
					Collar Depth 1335.0 ft		Sqz. Total Vol. bbl		
Date	Time 24-hr clock	Treating Pressure PSI	Flow Rate B/M	Density LB/G	Volume BBL	Message			
01/27/2011	14:41:22	-7	0.0	8.35	0.0	Started Acquisition			
01/27/2011	14:41:52	-7	0.0	8.35	0.0				
01/27/2011	14:42:07	-7	0.0	8.35	0.0	Start Job			
01/27/2011	14:42:09	-7	0.0	8.35	0.0	Pressure Test Lines			
01/27/2011	14:42:10	-7	0.0	8.35	0.0	Start Pumping Spacer			
01/27/2011	14:42:12	-7	0.0	8.35	0.0	Low pressure test to 500psi.			
01/27/2011	14:42:13	-7	0.0	8.35	0.0	Pumping 30bbl fresh water spacer.			
01/27/2011	14:42:22	-7	0.0	8.35	0.0				
01/27/2011	14:42:52	-7	0.0	8.35	0.0				
01/27/2011	14:43:22	-7	0.0	8.35	0.0				
01/27/2011	14:43:52	-7	0.0	8.35	0.0				
01/27/2011	14:44:22	-7	0.0	8.35	0.0				
01/27/2011	14:44:52	-7	0.0	8.35	0.0				
01/27/2011	14:45:22	-7	0.0	8.35	0.0				
01/27/2011	14:45:52	-7	0.0	8.35	0.0				
01/27/2011	14:46:22	-7	0.0	8.35	0.0				
01/27/2011	14:46:52	-7	0.0	8.35	0.0				
01/27/2011	14:47:22	-7	0.0	8.35	0.0				
01/27/2011	14:47:52	-7	0.0	8.35	0.0				
01/27/2011	14:48:22	-7	0.0	8.35	0.0				
01/27/2011	14:48:52	-7	0.0	8.35	0.0				

Well		Field		Job Start		Customer		Job Number	
Benjamin Fed 28-14C Benjamin Fed 28-14C		Mamm Creek		Jan/27/2011		ENCANA		BAD4-00268	
Date	Time 24-hr clock	Treating Pressure PSI	Flow Rate B/M	Density LB/G	Volume BBL	Message			
01/27/2011	14:49:52	-7	0.0	8.35	0.0				
01/27/2011	14:50:22	-7	0.0	8.35	0.0				
01/27/2011	14:50:52	-7	0.0	8.35	0.0				
01/27/2011	14:51:22	-7	0.0	8.35	0.0				
01/27/2011	14:51:52	-7	0.0	8.35	0.0				
01/27/2011	14:52:22	-7	0.0	8.35	0.0				
01/27/2011	14:52:52	-7	0.0	8.35	0.0				
01/27/2011	14:53:22	-7	0.0	8.35	0.0				
01/27/2011	14:53:52	-7	0.0	8.35	0.0				
01/27/2011	14:54:22	-7	0.0	8.35	0.0				
01/27/2011	14:54:52	-7	0.0	8.35	0.0				
01/27/2011	14:55:22	-7	0.0	8.35	0.0				
01/27/2011	14:55:52	-7	0.0	8.35	0.0				
01/27/2011	14:56:22	-7	0.0	8.35	0.0				
01/27/2011	14:56:52	-7	0.0	8.35	0.0				
01/27/2011	14:57:22	-7	0.0	8.35	0.0				
01/27/2011	14:57:52	-7	0.0	8.36	0.0				
01/27/2011	14:58:22	-7	0.0	8.36	0.0				
01/27/2011	14:58:52	-10	0.0	8.36	0.0				
01/27/2011	14:59:22	-10	0.0	8.36	0.0				
01/27/2011	14:59:52	-10	0.0	8.36	0.0				
01/27/2011	15:00:22	-10	0.0	8.36	0.0				
01/27/2011	15:00:52	-8	0.0	8.36	0.0				
01/27/2011	15:01:22	-8	0.0	8.36	0.0				
01/27/2011	15:01:52	-10	0.0	8.36	0.0				
01/27/2011	15:02:22	11	1.4	8.25	0.1				
01/27/2011	15:02:52	122	2.6	8.32	1.3				
01/27/2011	15:03:22	43	0.0	8.30	2.1				
01/27/2011	15:03:52	1641	0.1	8.30	2.1				
01/27/2011	15:04:22	1514	0.0	8.30	2.1				
01/27/2011	15:04:52	1463	0.0	8.30	2.1				
01/27/2011	15:05:22	2450	0.0	8.30	2.1				
01/27/2011	15:05:52	2384	0.0	8.30	2.1				
01/27/2011	15:06:22	2336	0.0	8.30	2.1				
01/27/2011	15:06:52	2295	0.0	8.30	2.1				
01/27/2011	15:07:22	1	0.0	8.31	2.1				
01/27/2011	15:07:52	52	2.5	8.30	2.6				
01/27/2011	15:08:22	78	2.5	8.30	3.7				
01/27/2011	15:08:52	100	3.3	8.30	5.0				
01/27/2011	15:09:22	88	3.5	8.30	6.7				
01/27/2011	15:09:52	180	5.0	8.30	9.0				
01/27/2011	15:10:22	172	5.0	8.30	11.5				
01/27/2011	15:10:52	173	5.0	8.30	14.0				
01/27/2011	15:11:22	170	5.0	8.29	16.5				
01/27/2011	15:11:52	182	5.0	8.28	19.0				
01/27/2011	15:12:22	174	5.0	8.28	21.5				
01/27/2011	15:12:52	187	5.0	8.28	24.0				
01/27/2011	15:13:22	190	5.0	8.28	26.5				
01/27/2011	15:13:52	189	5.0	8.28	29.0				
01/27/2011	15:14:22	193	5.2	12.23	31.5				
01/27/2011	15:14:47	344	6.3	12.56	33.7	End Spacer			
01/27/2011	15:14:48	344	6.3	12.57	33.8	Start Cement Slurry			
01/27/2011	15:14:49	361	6.5	12.58	33.9	Start Mixing Scav Slurry			
01/27/2011	15:14:51	353	6.5	12.58	34.1	Mixing and pumping 12.5ppg lead slurry.			

Well		Field		Job Start		Customer		Job Number	
Benjamin Fed 28-14C Benjamin Fed 28-14C		Mamm Creek		Jan/27/2011		ENCANA		BAD4-00268	
Date	Time 24-hr clock	Treating Pressure PSI	Flow Rate B/M	Density LB/G	Volume BBL	Message			
01/27/2011	15:15:17	337	6.6	12.66	37.0	End Scavenger Slurry			
01/27/2011	15:15:18	337	6.6	12.66	37.1	Start Mixing Lead Slurry			
01/27/2011	15:15:22	330	6.6	12.64	37.5				
01/27/2011	15:15:52	326	6.6	12.60	40.8				
01/27/2011	15:16:22	437	8.0	12.59	44.4				
01/27/2011	15:16:52	422	8.0	12.58	48.4				
01/27/2011	15:17:22	406	8.0	12.57	52.4				
01/27/2011	15:17:52	401	8.0	12.56	56.4				
01/27/2011	15:18:22	403	8.0	12.53	60.4				
01/27/2011	15:18:52	381	8.0	12.53	64.5				
01/27/2011	15:19:22	366	8.0	12.53	68.5				
01/27/2011	15:19:52	372	8.0	12.52	72.5				
01/27/2011	15:20:22	369	8.0	12.51	76.5				
01/27/2011	15:20:52	367	8.0	12.53	80.5				
01/27/2011	15:21:22	369	8.0	12.54	84.5				
01/27/2011	15:21:52	375	8.0	12.54	88.5				
01/27/2011	15:22:22	405	8.0	12.52	92.5				
01/27/2011	15:22:52	392	8.0	12.50	96.5				
01/27/2011	15:23:22	388	8.0	12.51	100.5				
01/27/2011	15:23:52	388	8.0	12.53	104.5				
01/27/2011	15:24:22	391	8.0	12.52	108.6				
01/27/2011	15:24:52	385	8.0	12.53	112.6				
01/27/2011	15:25:22	400	8.0	12.53	116.6				
01/27/2011	15:25:52	397	8.0	12.52	120.6				
01/27/2011	15:26:22	387	8.0	12.53	124.6				
01/27/2011	15:26:52	400	8.0	12.53	128.6				
01/27/2011	15:27:22	388	8.0	12.54	132.6				
01/27/2011	15:27:52	385	8.0	12.56	136.7				
01/27/2011	15:28:22	110	5.6	12.52	140.5				
01/27/2011	15:28:52	106	3.7	12.55	142.5				
01/27/2011	15:29:22	101	3.7	12.55	144.3				
01/27/2011	15:29:52	99	3.7	12.55	146.1				
01/27/2011	15:30:17	112	3.7	12.91	147.7	End Lead Slurry			
01/27/2011	15:30:22	111	3.7	13.29	148.0				
01/27/2011	15:30:52	124	3.6	14.53	149.8				
01/27/2011	15:31:20	117	3.5	15.07	151.5	Start Mixing Tail Slurry			
01/27/2011	15:31:22	143	3.5	15.08	151.6	Pumped 114bbbls of 12.5ppg lead.			
01/27/2011	15:31:23	154	3.5	15.08	151.7	Mixed and pumped 31bbbls of 15.8ppg tail.			
01/27/2011	15:31:52	92	2.8	15.00	153.2				
01/27/2011	15:32:22	69	2.9	15.56	154.7				
01/27/2011	15:32:52	66	2.4	15.19	155.9				
01/27/2011	15:33:22	67	2.5	15.38	157.1				
01/27/2011	15:33:36	69	2.5	15.44	157.7	End Tail Slurry			
01/27/2011	15:33:37	68	2.5	15.46	157.8	End Cement Slurry			
01/27/2011	15:33:41	68	2.5	15.48	157.9	Drop Top Plug			
01/27/2011	15:33:42	68	2.5	15.50	158.0	Dropped plug on the fly.			
01/27/2011	15:33:43	69	2.5	15.51	158.0	Displace with fresh water.			
01/27/2011	15:33:44	68	2.5	15.51	158.0	Good returns.			
01/27/2011	15:33:52	69	2.5	15.57	158.4				
01/27/2011	15:34:22	71	2.4	15.65	159.6				
01/27/2011	15:34:52	98	3.2	15.68	161.0				
01/27/2011	15:35:22	283	5.1	15.67	163.3				
01/27/2011	15:35:52	266	5.1	15.67	165.8				
01/27/2011	15:36:22	268	5.1	15.67	168.4				

Well		Field		Job Start		Customer		Job Number	
Benjamin Fed 28-14C Benjamin Fed 28-14C		Mamm Creek		Jan/27/2011		ENCANA		BAD4-00268	
Date	Time 24-hr clock	Treating Pressure PSI	Flow Rate B/M	Density LB/G	Volume BBL	Message			
01/27/2011	15:37:22	280	5.1	15.66	173.4				
01/27/2011	15:37:52	377	5.1	15.71	175.9				
01/27/2011	15:38:22	93	2.6	15.73	177.5				
01/27/2011	15:38:52	88	2.7	15.75	178.9				
01/27/2011	15:39:22	92	2.8	15.69	180.2				
01/27/2011	15:39:52	67	2.5	14.70	181.6				
01/27/2011	15:40:22	58	2.9	10.72	182.8				
01/27/2011	15:40:52	64	3.4	10.03	184.3				
01/27/2011	15:41:22	62	3.4	9.77	186.0				
01/27/2011	15:41:52	146	4.9	9.38	187.8				
01/27/2011	15:42:22	110	4.9	9.18	190.3				
01/27/2011	15:42:52	209	6.5	9.00	193.2				
01/27/2011	15:43:22	195	6.5	8.82	196.4				
01/27/2011	15:43:52	192	6.5	8.63	199.7				
01/27/2011	15:44:22	192	6.5	8.58	202.9				
01/27/2011	15:44:52	195	6.5	8.47	206.1				
01/27/2011	15:45:22	184	6.5	8.45	209.4				
01/27/2011	15:45:52	184	6.5	8.37	212.6				
01/27/2011	15:46:22	178	6.5	8.31	215.8				
01/27/2011	15:46:52	186	6.5	8.32	219.0				
01/27/2011	15:47:22	208	6.4	8.29	222.3				
01/27/2011	15:47:52	233	6.4	8.27	225.5				
01/27/2011	15:48:22	237	6.4	8.23	228.7				
01/27/2011	15:48:52	253	6.4	8.28	231.9				
01/27/2011	15:49:22	262	6.4	8.28	235.1				
01/27/2011	15:49:52	370	7.8	8.28	238.6				
01/27/2011	15:50:22	378	7.8	8.28	242.5				
01/27/2011	15:50:52	395	7.8	8.28	246.4				
01/27/2011	15:51:22	395	7.8	8.27	250.3				
01/27/2011	15:51:52	414	7.7	8.27	254.2				
01/27/2011	15:52:22	425	7.7	8.27	258.1				
01/27/2011	15:52:52	461	7.7	8.28	262.0				
01/27/2011	15:53:22	495	7.8	8.28	265.8				
01/27/2011	15:53:52	279	4.5	8.27	269.6				
01/27/2011	15:54:22	286	3.5	8.27	271.4				
01/27/2011	15:54:52	300	3.4	8.27	273.1				
01/27/2011	15:55:22	310	3.4	8.27	274.8				
01/27/2011	15:55:52	300	2.0	8.27	276.3				
01/27/2011	15:56:22	322	2.0	8.27	277.3				
01/27/2011	15:56:52	310	2.0	8.27	278.3				
01/27/2011	15:57:22	336	2.0	8.27	279.2				
01/27/2011	15:57:52	380	2.0	8.27	280.2				
01/27/2011	15:58:22	356	2.0	8.27	281.2				
01/27/2011	15:58:52	393	2.0	8.27	282.2				
01/27/2011	15:59:22	317	2.0	8.27	283.2				
01/27/2011	15:59:52	380	2.0	8.27	284.2				
01/27/2011	16:00:22	368	2.0	8.27	285.1				
01/27/2011	16:00:52	348	2.0	8.27	286.1				
01/27/2011	16:01:22	381	2.0	8.27	287.1				
01/27/2011	16:01:52	601	2.0	8.27	288.1				
01/27/2011	16:02:07	1205	0.2	8.28	288.5	Bump Top Plug			
01/27/2011	16:02:08	1205	0.2	8.27	288.5	End Displacement			
01/27/2011	16:02:13	1199	0.0	8.28	288.5	Bumped plug to 1200psi.			
01/27/2011	16:02:14	1202	0.0	8.27	288.5	Floats held.			

Well Benjamin Fed 28-14C Benjamin Fed 28-14C		Field Mamm Creek		Job Start Jan/27/2011		Customer ENCANA		Job Number BAD4-00268	
Date	Time 24-hr clock	Treating Pressure PSI	Flow Rate B/M	Density LB/G	Volume BBL	Message			
01/27/2011	16:02:52	1188	0.0	8.27	288.5				
01/27/2011	16:03:22	1035	0.0	8.27	288.5				
01/27/2011	16:03:52	-12	0.0	8.28	288.5				
01/27/2011	16:04:22	-15	0.0	8.28	288.5				
01/27/2011	16:04:52	-15	0.0	8.28	288.5				

Post Job Summary

Average Pump Rates, bbl/min					Volume of Fluid Injected, bbl			
Slurry 5.1	N2	Mud	Maximum Rate 8.1		Total Slurry 288.5	Mud 0.0	Spacer 33.7	N2
Treating Pressure Summary, psi					Breakdown Fluid			
Maximum 2465	Final -15	Average 364	Bump Plug to 1200	Breakdown	Type	Volume bbl		Density lb/gal
Avg. N2 Percent %	Designed Slurry Volume 0.0 bbl		Displacement 130.6 bbl	Mix Water Temp 75 degF	Cement Circulated to Surface? <input checked="" type="checkbox"/>	Volume 48.0 bbl		
					Washed Thru Perfs <input type="checkbox"/>	To ft		
Customer or Authorized Representative TIM PHILLIPS			Schlumberger Supervisor Jeff Patterson		Circulation Lost <input type="checkbox"/>	Job Completed <input checked="" type="checkbox"/>		
					-	-		