



Copyright (c) 2010 by Carrig Drilling Technology, Ltd.

Houston, TX

Main (281) 774-5600 / Support (866) 433-4345
www.myWells.com

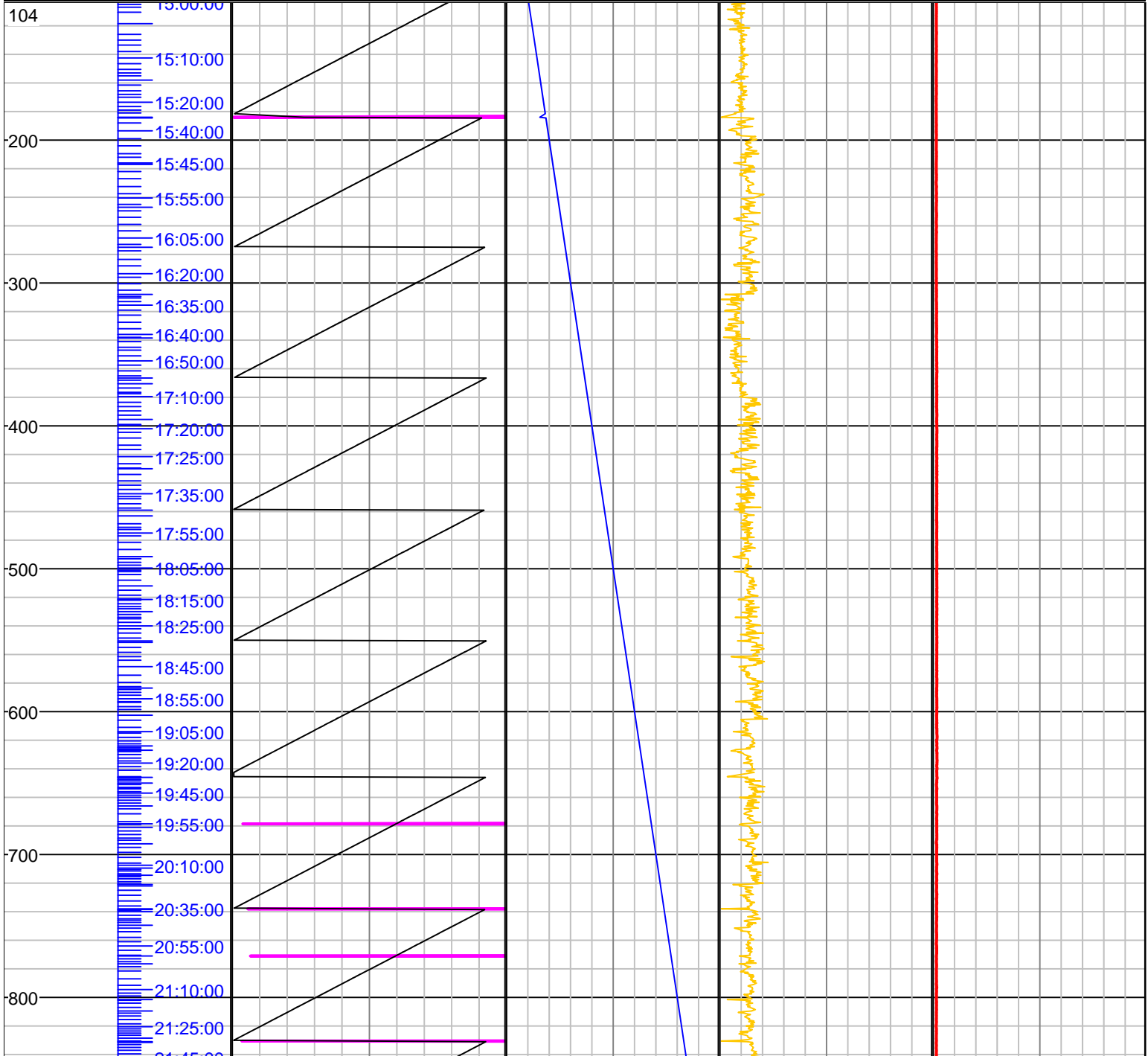
Operator
Well
Field
State
County
Rig Number
Spud Date
API Number
Contractor

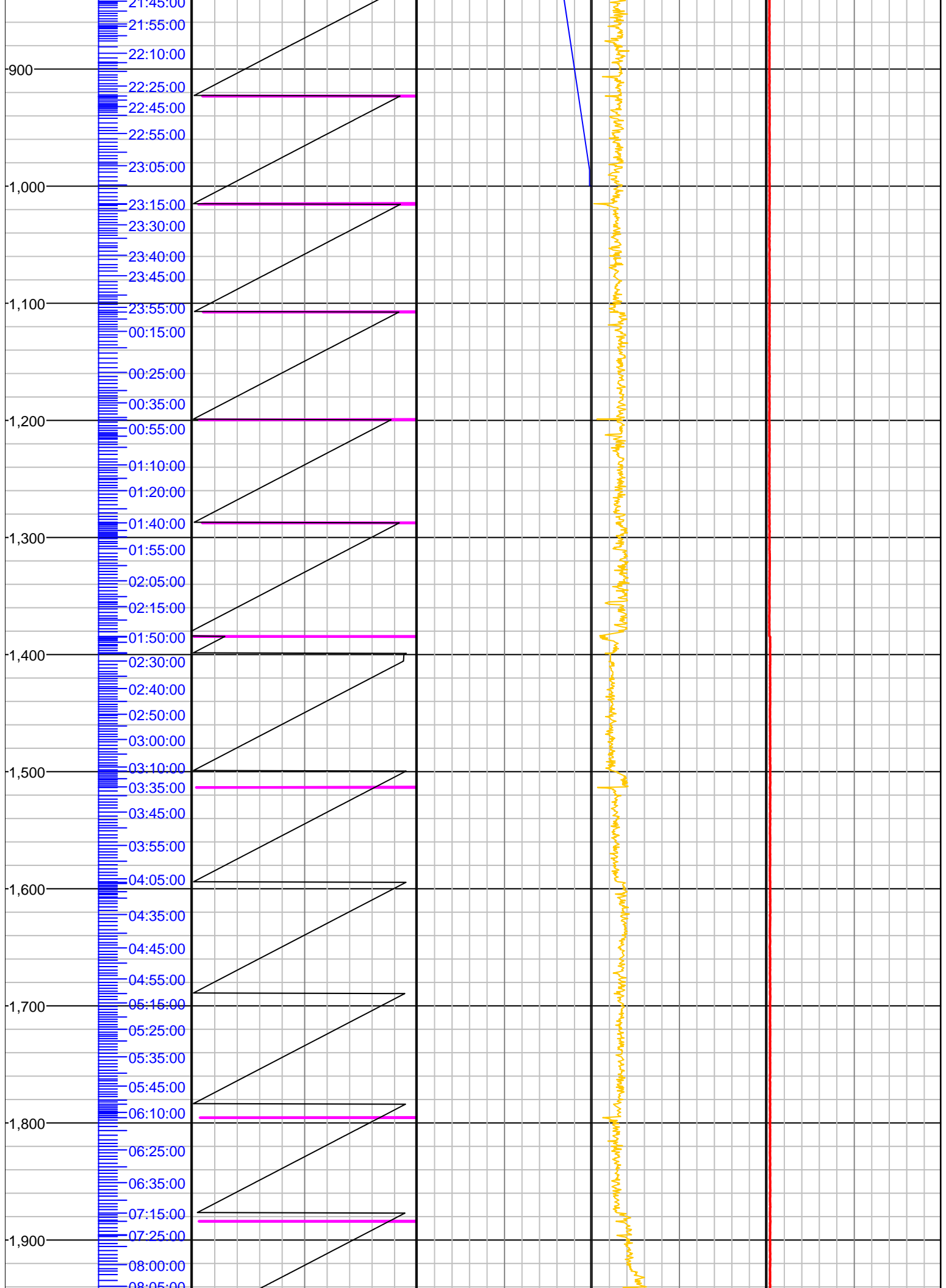
ENCANA CORPORATION
00M15-BENJAMIN FEDERAL 28-14C
BENJAMIN FEDERAL K28NW
COLORADO
GARFIELD
M15
2011-01-27
NABORS DRILLING USA, LP

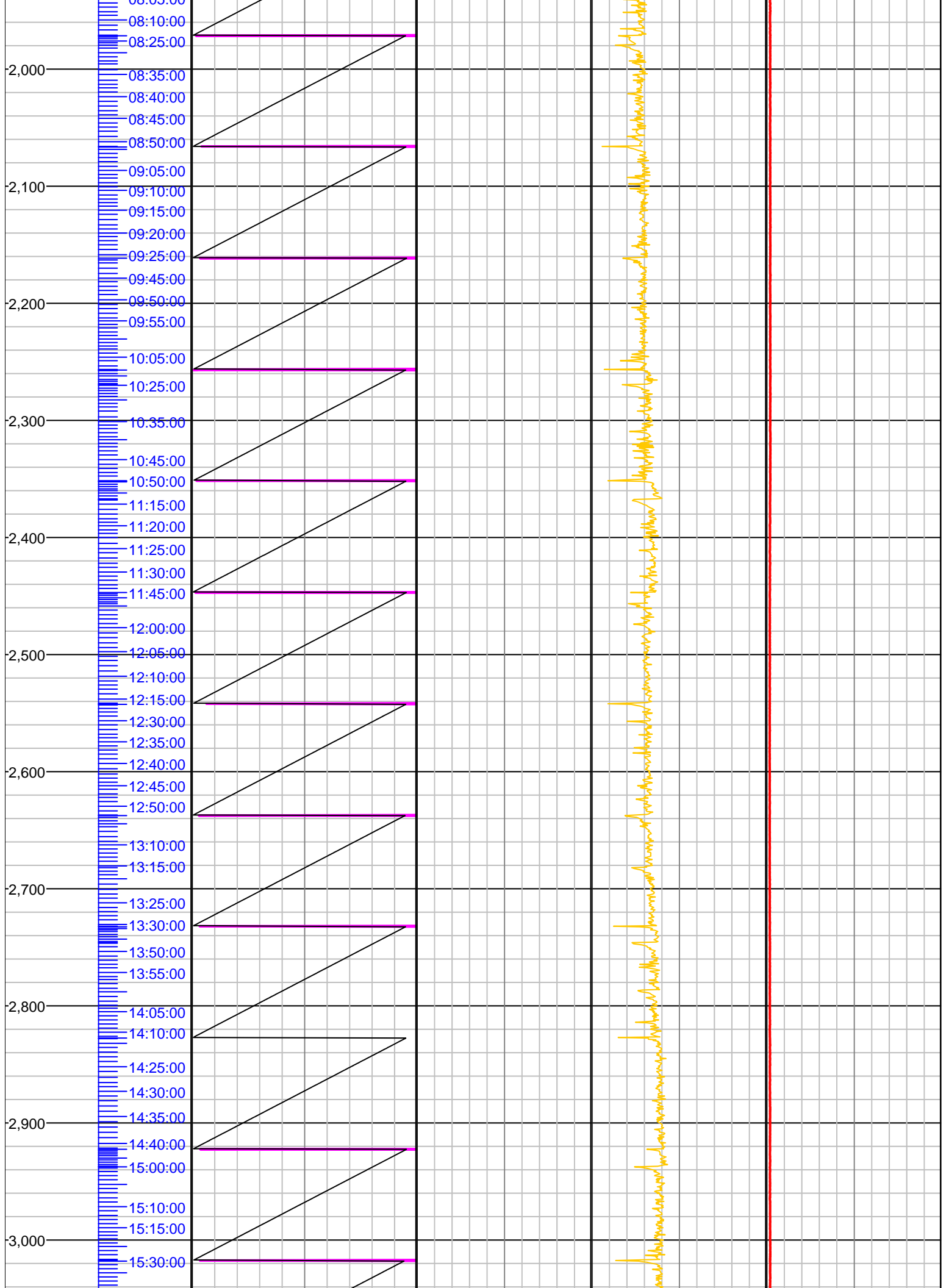
DEPTHS: 103.5 TO 8,763

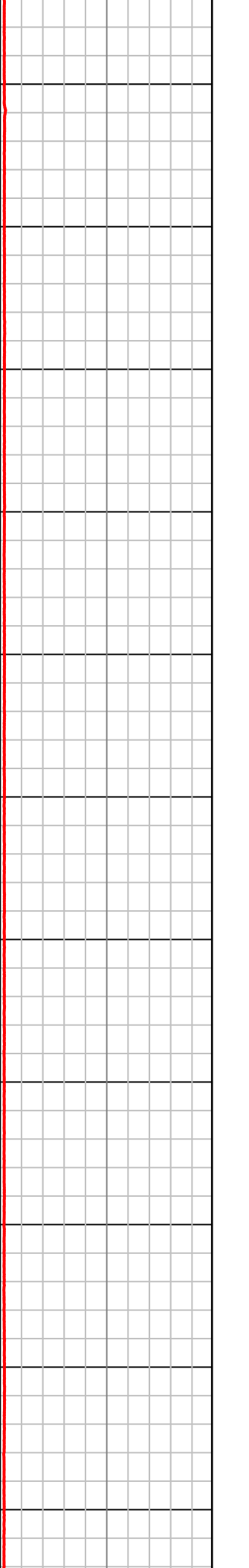
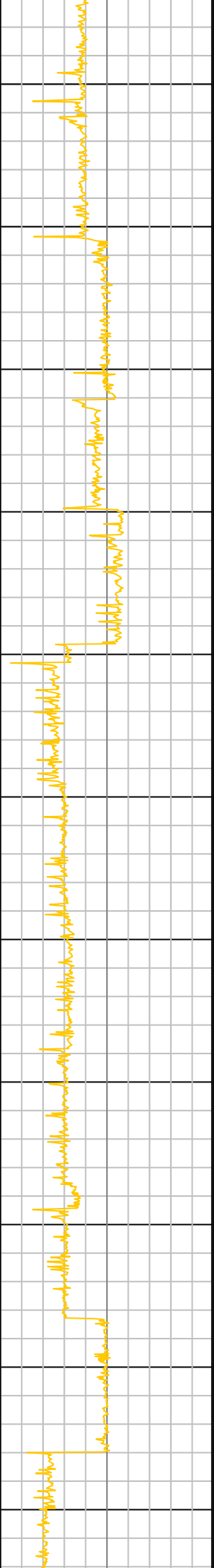
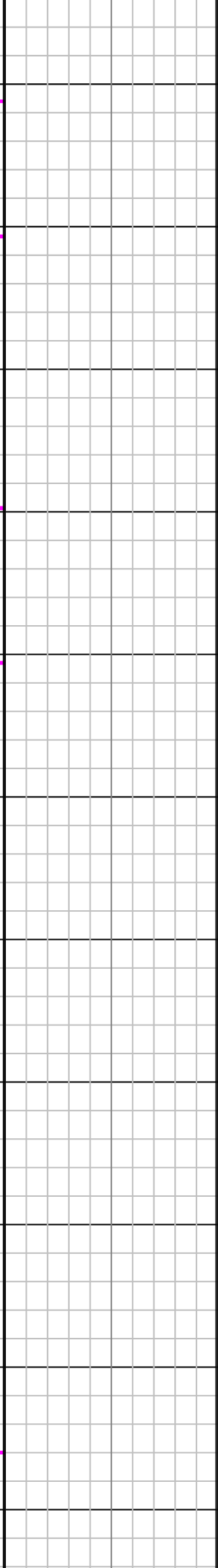
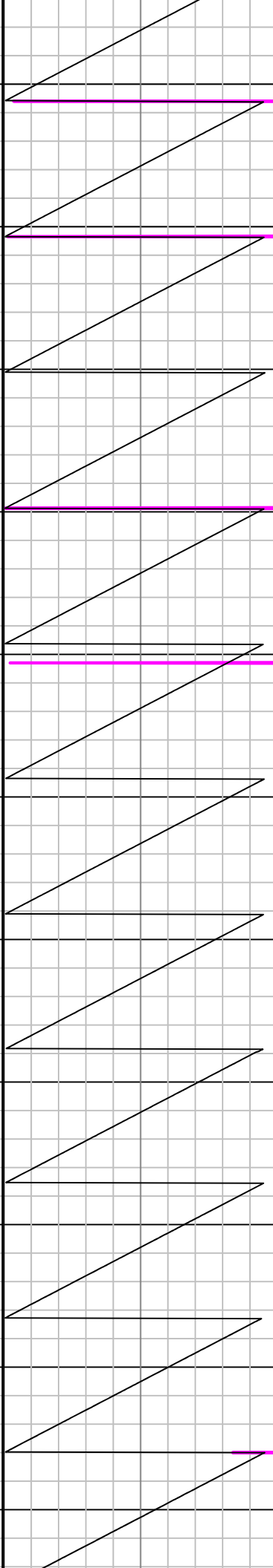
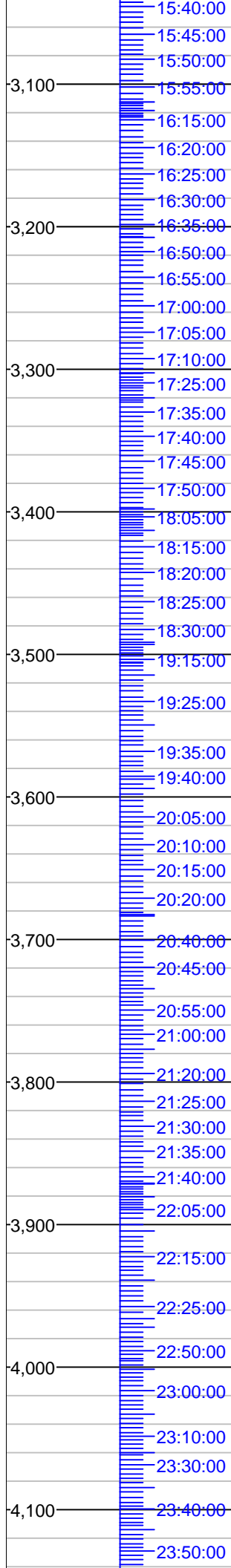
SCALE: 1"=100'

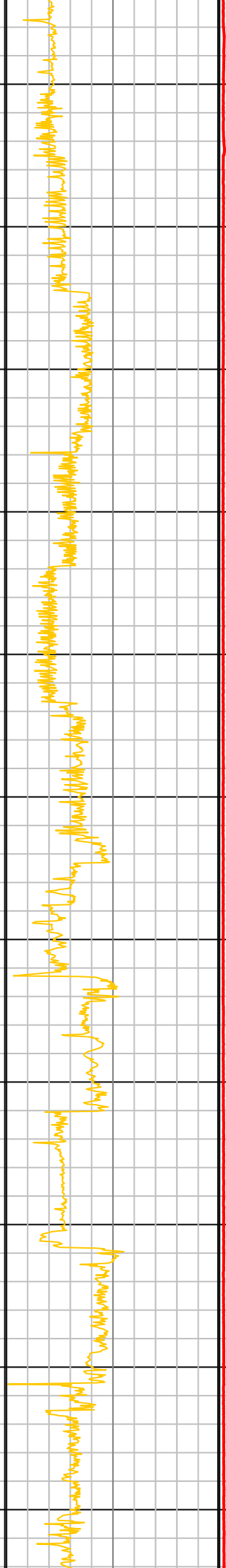
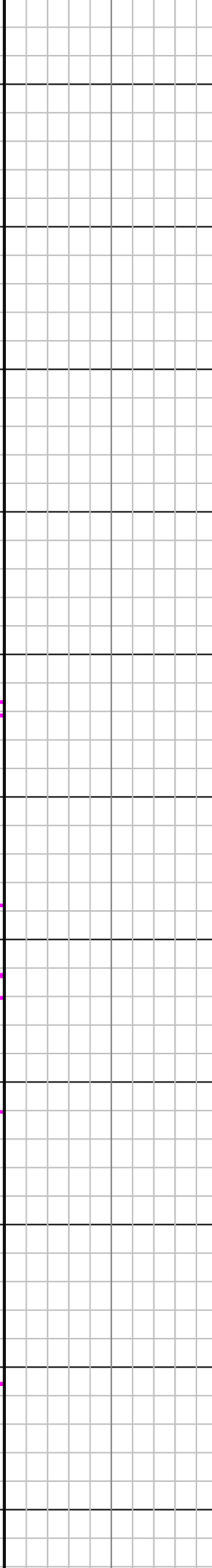
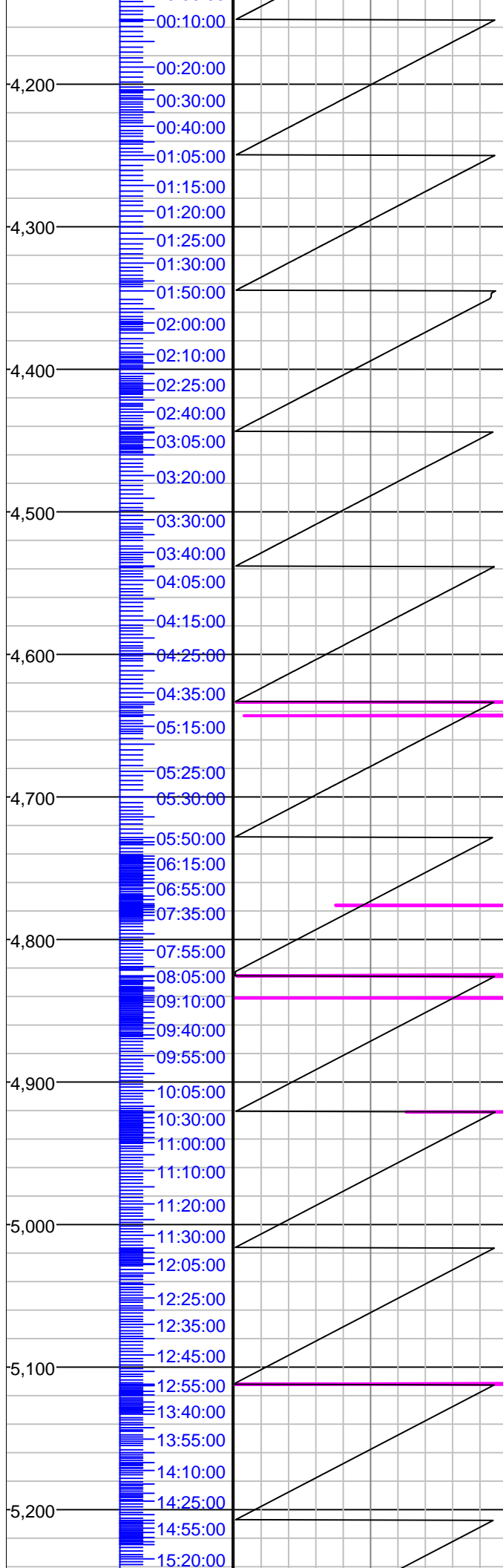
Time depth track	Track 1	Track 2	Track 3	Track 5
Date: 10:58:20 17-Mar-2011	ROP Depth/Hour 0 ft/hr	Depth - Bit 8,654.02 ft	Weight on Bit 0 klbs	Gas Total - units 35 units
Depth-Hole: 8,763	Block Position 46.79 ft		Srv Inclination N/A degrees	
Rig # M15				
NABORS DRILLING USA, LP				
ENCANA CORPORATION				

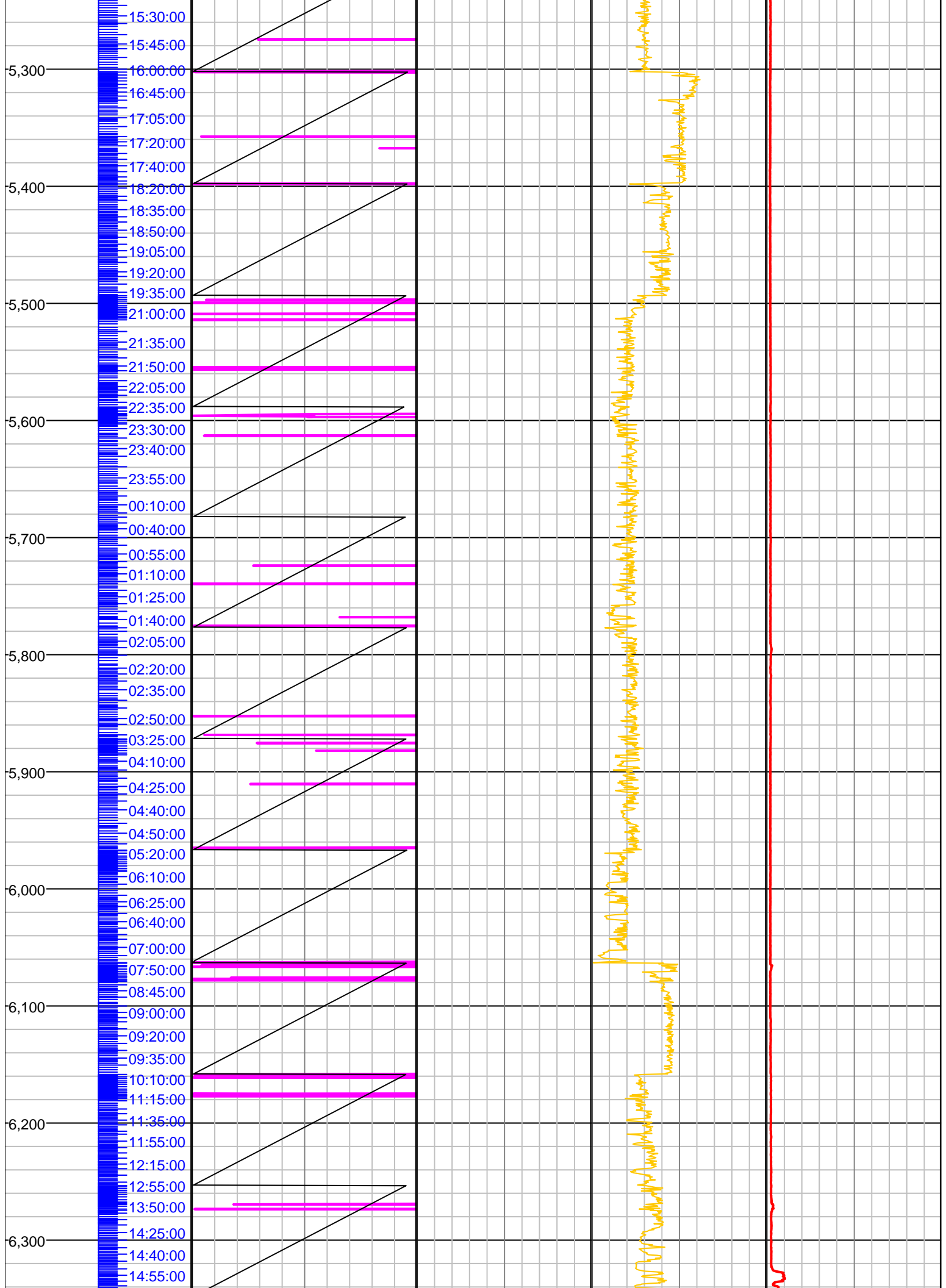


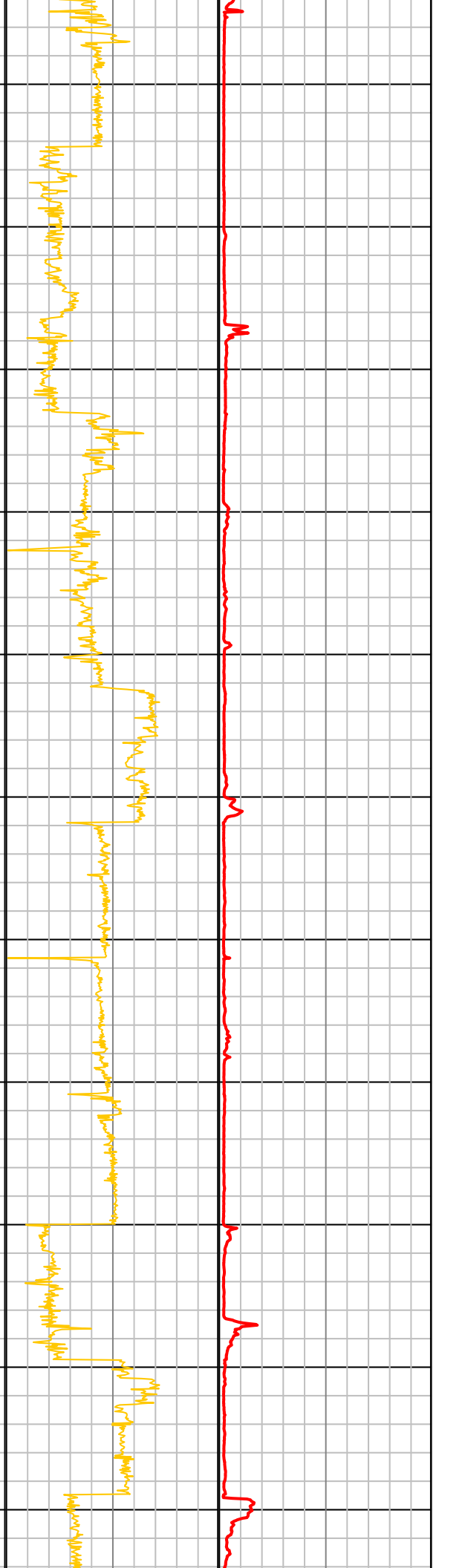
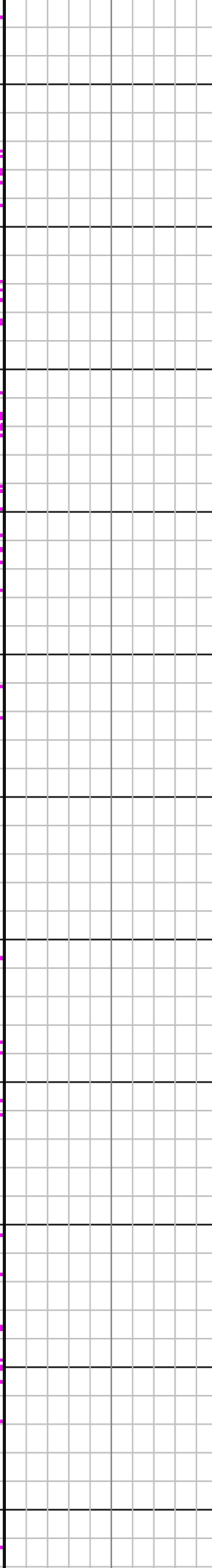
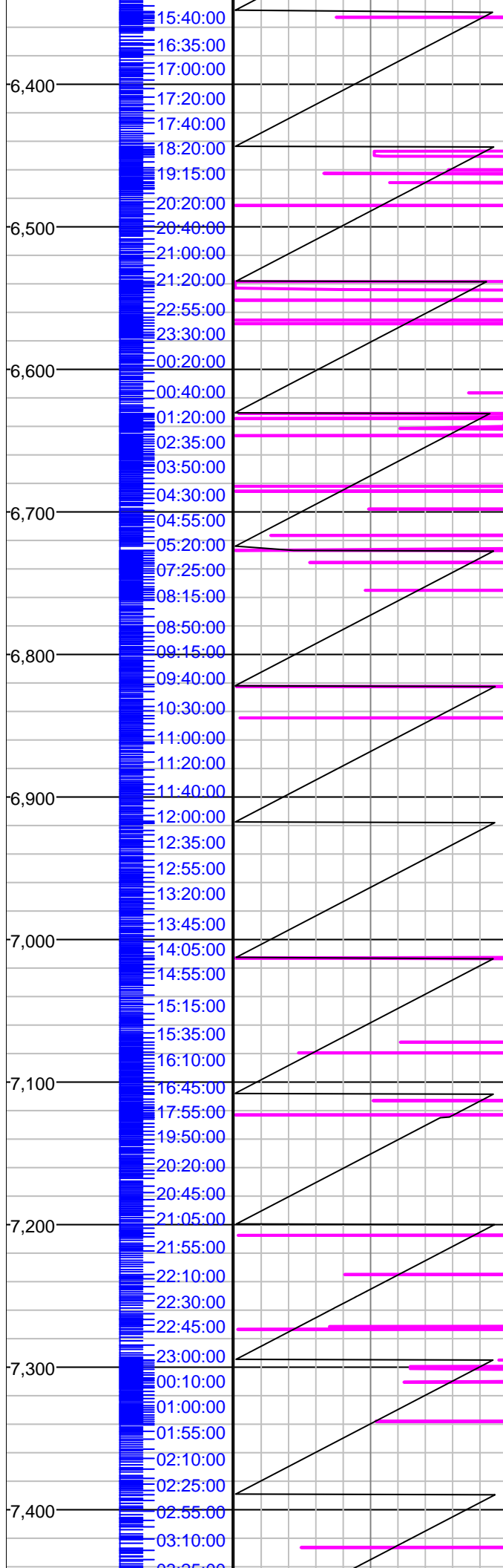


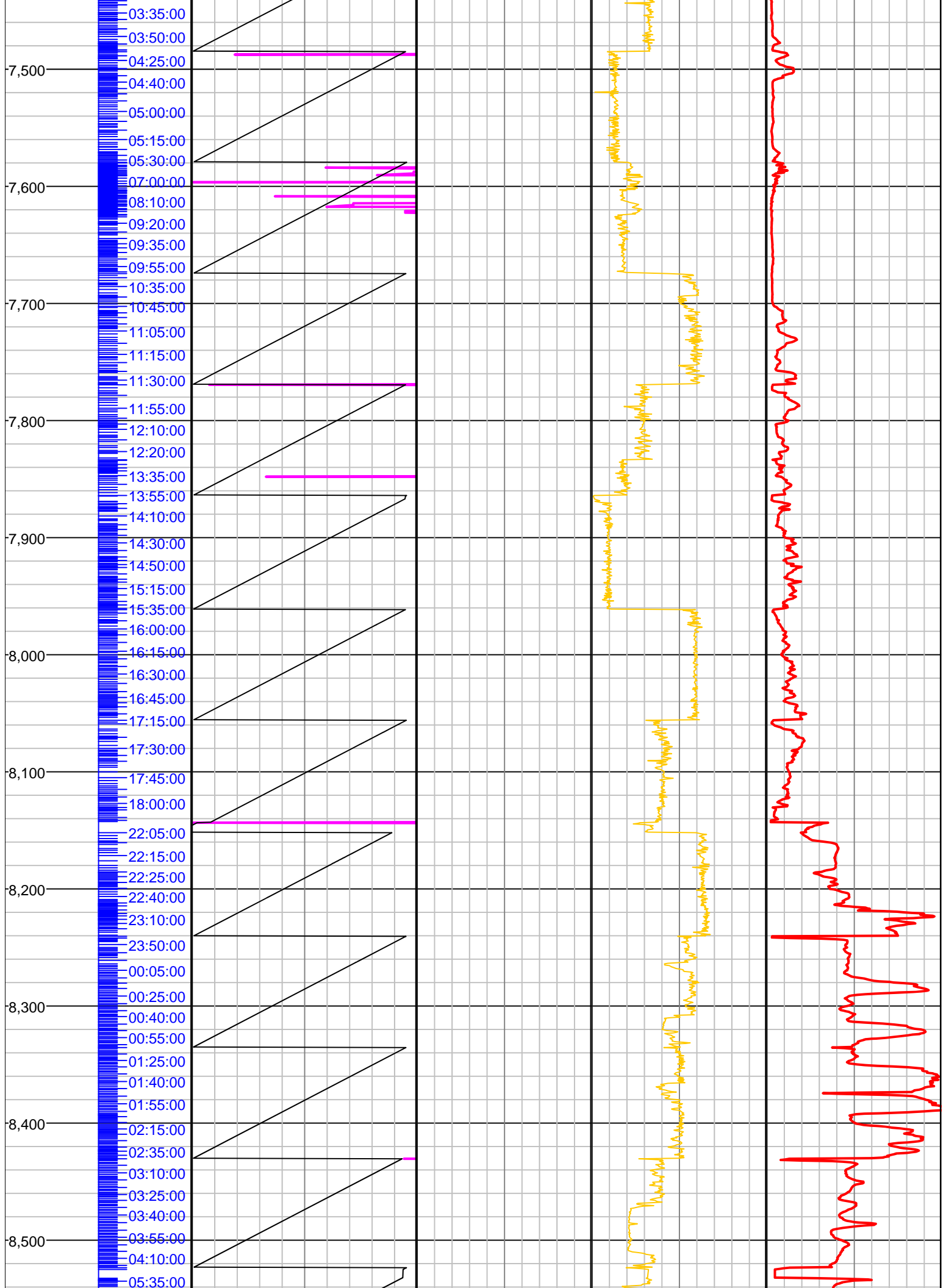


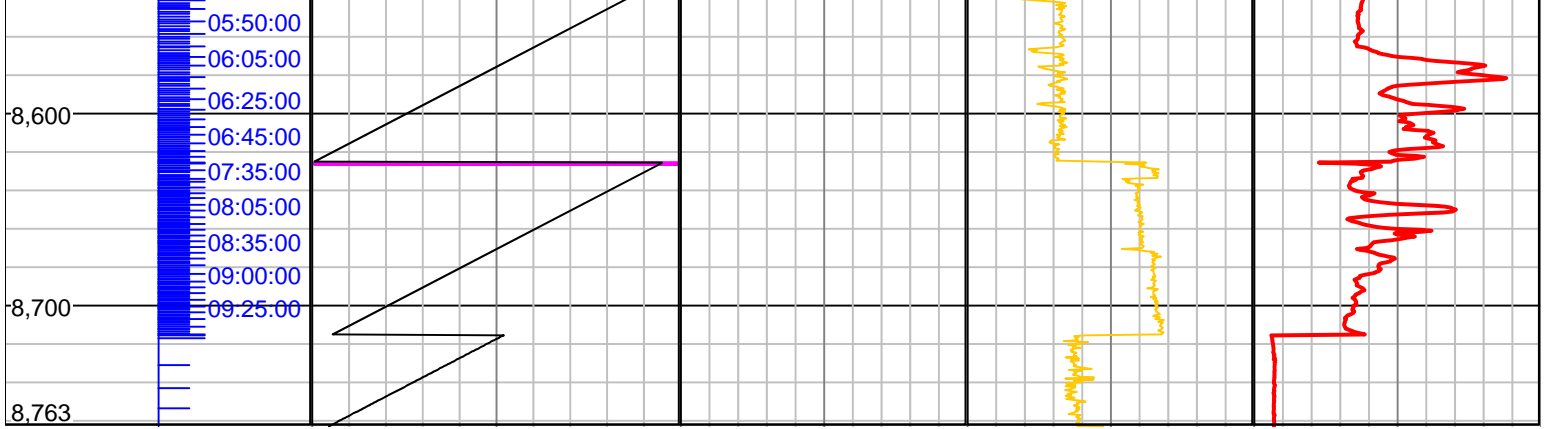












The log data, interpretations and recommendations provided by Canrig are inferences and assumptions based on measurements of drilling fluids. Such inferences and assumptions are not infallible and reasonable professionals may differ. Canrig does not represent or warrant the accuracy, correctness or completeness of any log data, interpretations, recommendations or information provided by Canrig, its officers, agents or employees. Canrig does not and cannot guarantee the accuracy of any such interpretation of the log data, interpretations or recommendations and ENCANA CORPORATION is fully responsible for all decisions and actions it takes based on such log data, interpretations and recommendations.