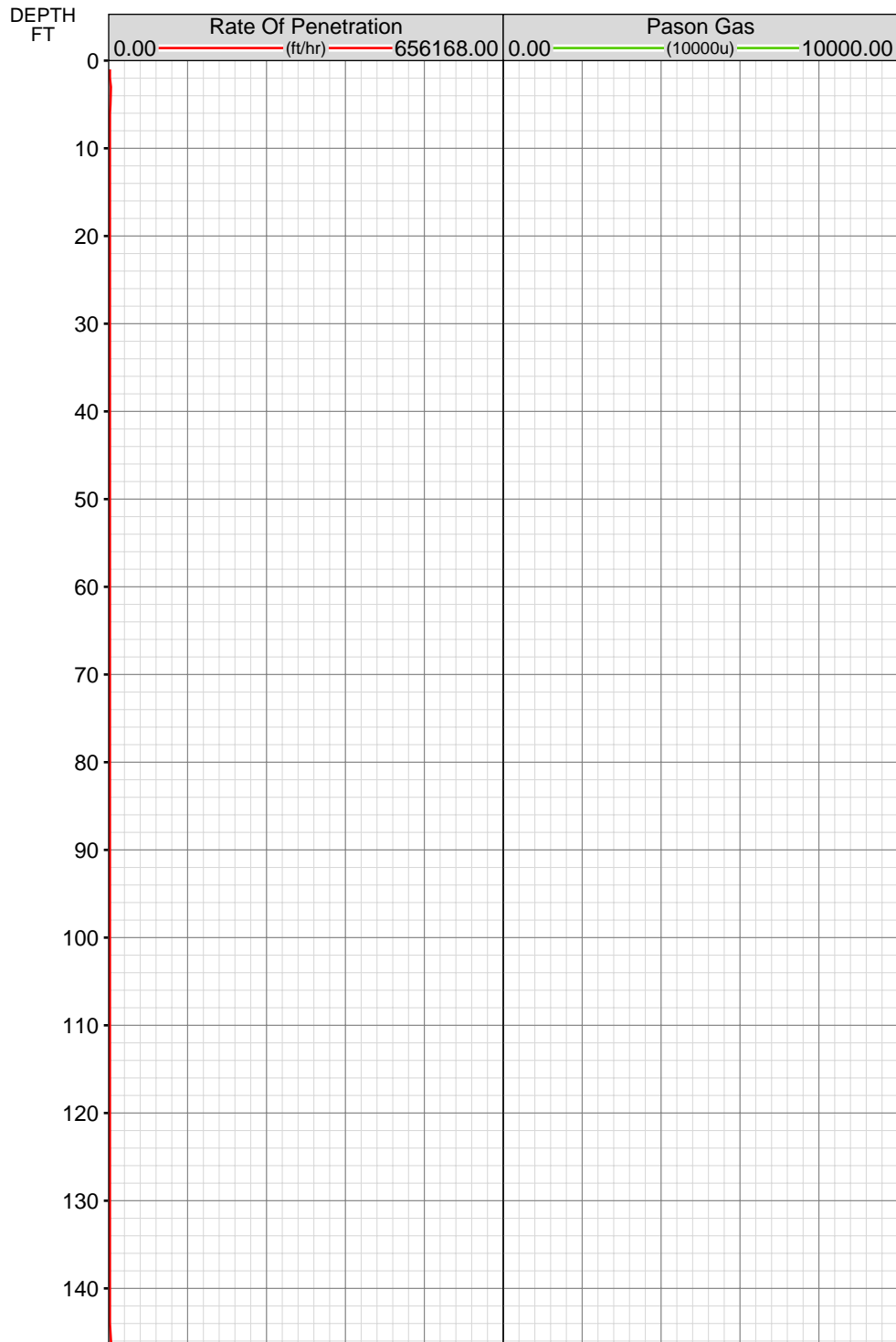


DataHub EDR Log

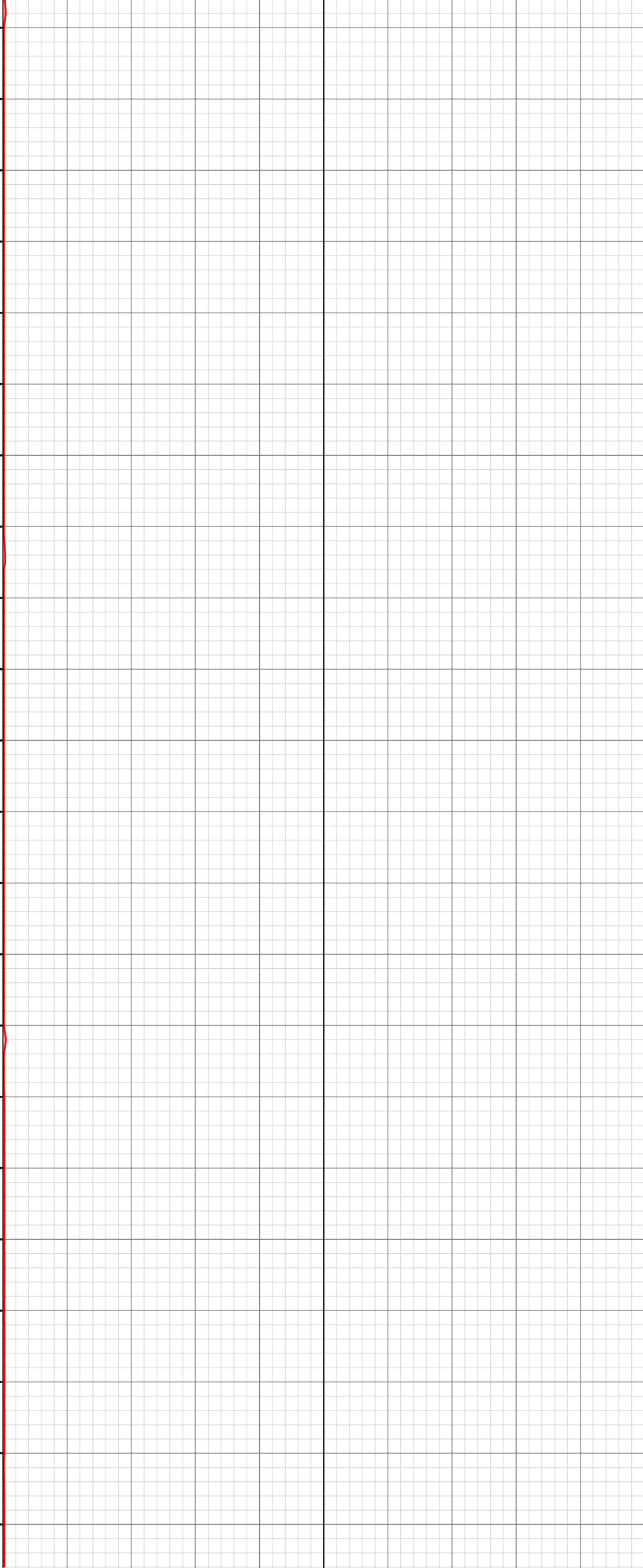
Mon Jul 26, 2010 07:43:10
Well Dossier 1279628589
Marilyn Tucker

OPERATOR: EnCana Oil & Gas (USA), Inc.	CONTRACTOR: Patterson-UTI Drilling Company
WELL: NP WF05D-22 K22 596	UNIQUE WELL ID:
FIELD:	SPUD DATE: Jul 20, 2010 13:00
LOCATION: NESW SEC:22 TWP: 5S RNG:96W MER:6T	RELEASE DATE: Jul 25, 2010 06:00
COUNTRY: USA	
RIG: Pat-UTI 303	



MEMOS

150
160
170
180
190
200
210
220
230
240
250
260
270
280
290
300
310
320
330
340
350
360



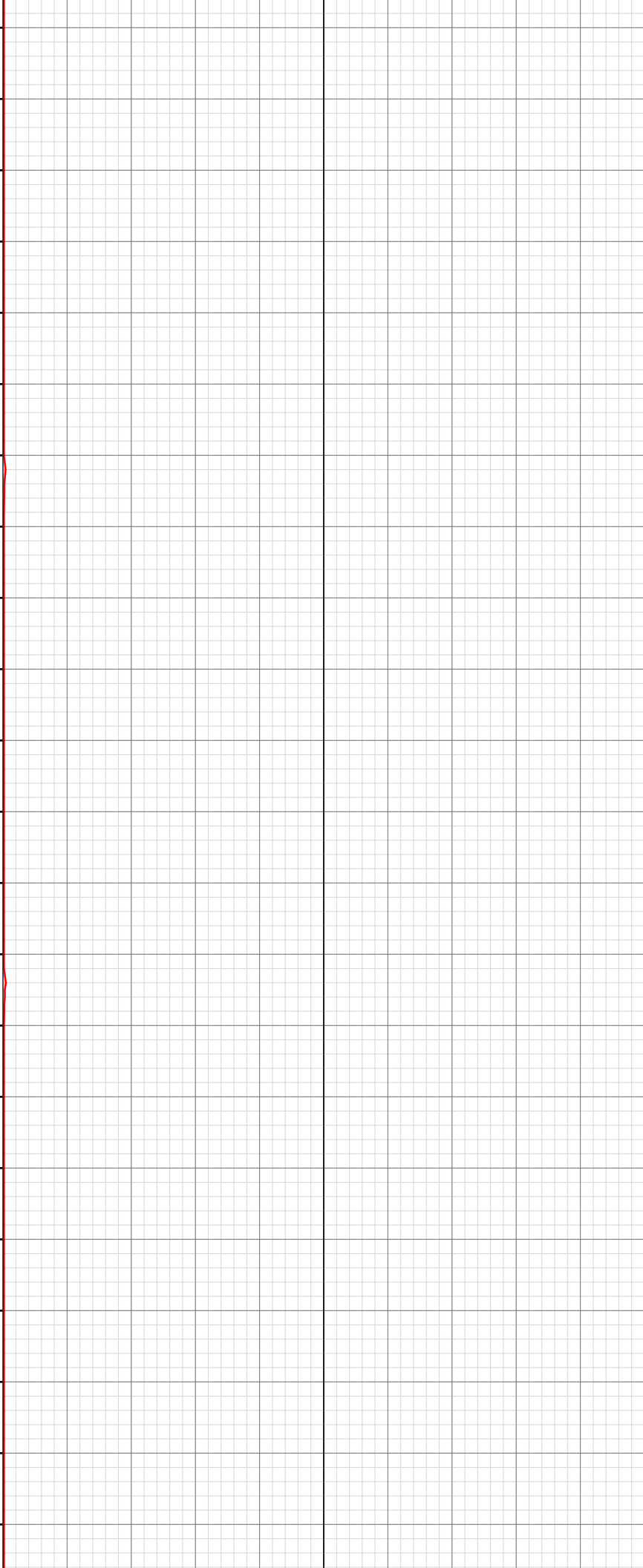
370
380
390
400
410
420
430
440
450
460
470
480
490
500
510
520
530
540
550
560
570
580

397.00imperial: MUD VIS 0.42
397.00imperial: MUD WEIGHT 8.60

431.00imperial: 021TGAS 03090394 SW0.27
HW25.00 - 110 days on

470.00imperial: MUD WEIGHT 8.70
470.80imperial: MUD VIS 0.43

590
600
610
620
630
640
650
660
670
680
690
700
710
720
730
740
750
760
770
780
790
800



810

820

830

840

850

860

870

880

890

900

910

920

930

940

950

960

970

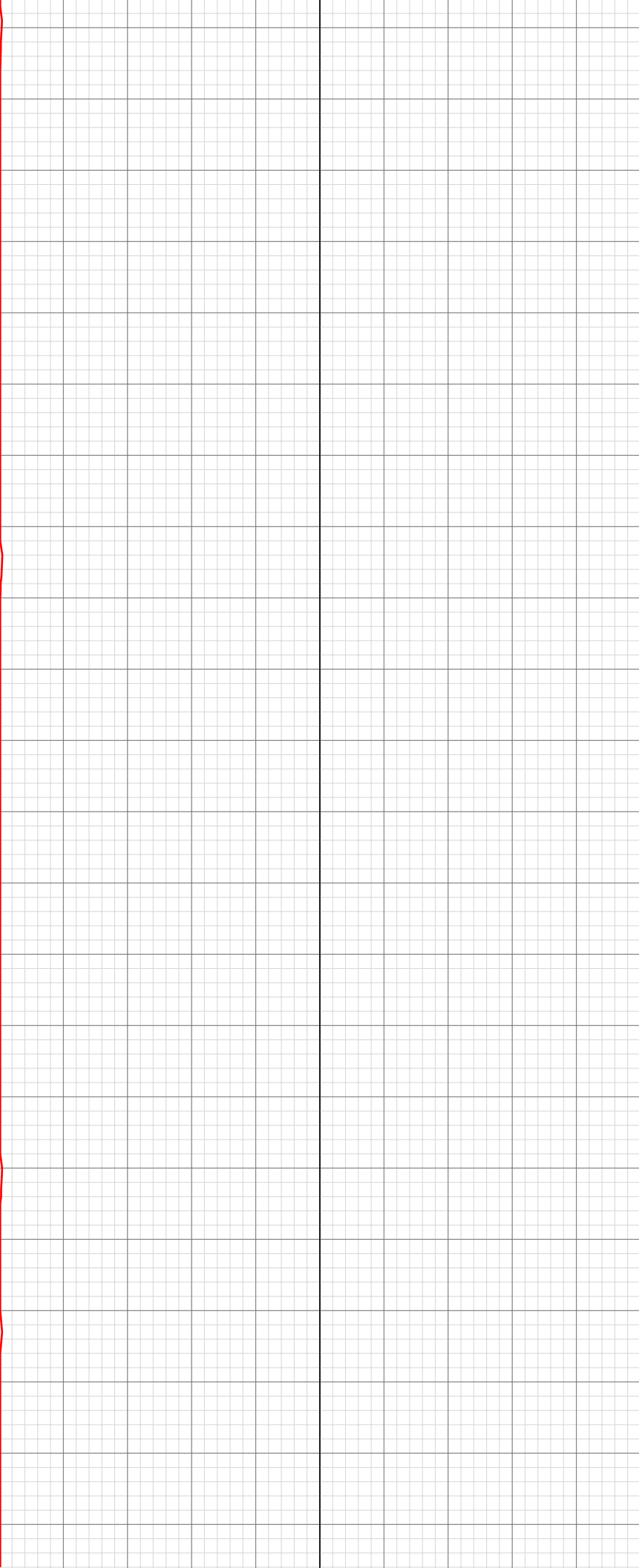
980

990

1000

1010

1020



1030

1040

1050

1060

1070

1080

1090

1100

1110

1120

1130

1140

1150

1160

1170

1180

1190

1200

1210

1220

1230

1240

1055.91imperial: INSTALL ROTATING RUBBER

1250

1260

1270

1280

1290

1300

1310

1320

1330

1340

1350

1360

1370

1380

1390

1480

1490

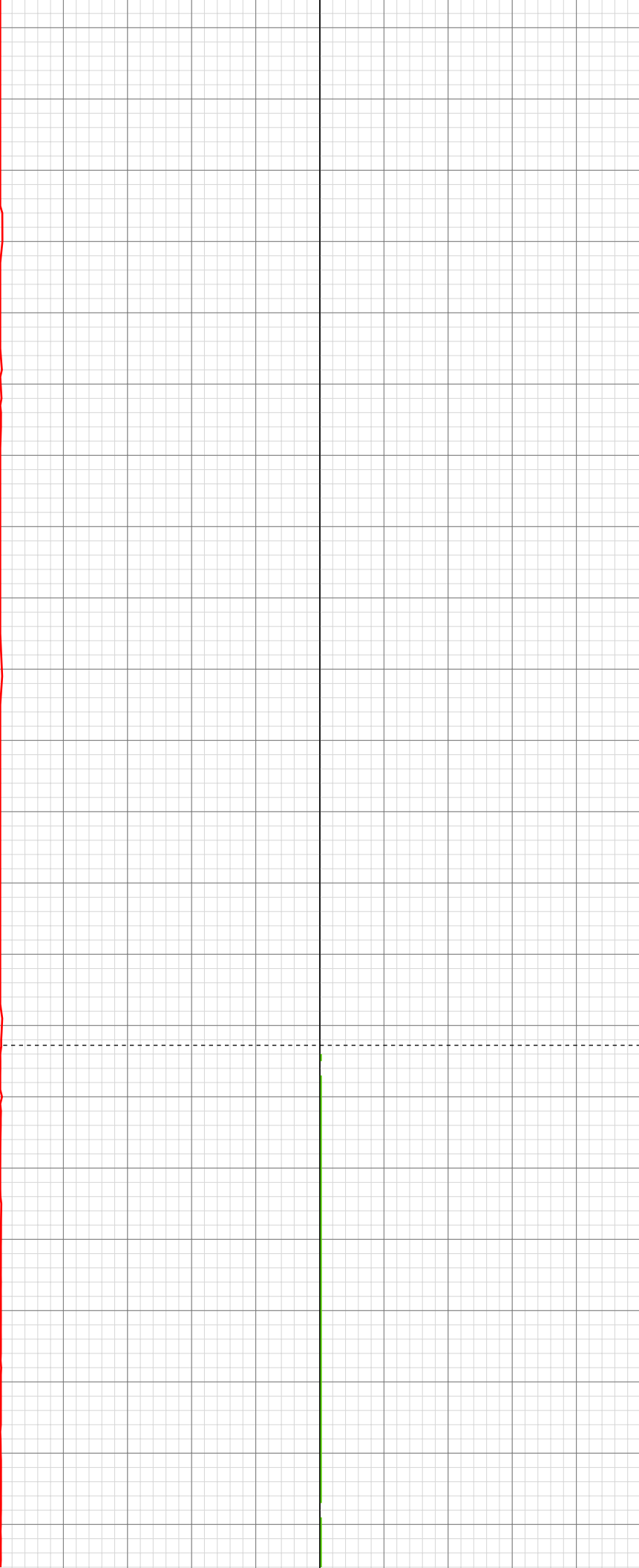
1500

1510

1520

1530

1540



1550
1560
1570
1580
1590
1600
1610
1620
1630
1640
1650
1660
1670
1680
1690
1700
1710
1720
1730
1740
1750
1760

1560.00imperial: IN TALLY: HOLE DEPTH SET TO 1563.9
1562.00imperial: MUD VIS 0.42
1562.00imperial: MUD WEIGHT 8.70

1604.00imperial: TAG@1604'
1604.00imperial: MUD VIS 0.42
1604.00imperial: MUD WEIGHT 8.70
1604.00imperial: HOOK LOAD THRESHOLD RECALIBRATED TO 34

1647.00imperial: ZDiffPressure from SideKick sk-06-03-3103
1647.30imperial: ZWOB from SideKick sk-06-03-3103
1652.00imperial: MUD VIS 0.41
1653.00imperial: IN TALLY: HOLE DEPTH SET TO 1655.3
1653.00imperial: ZDiffPressure from SideKick sk-06-03-3103
1653.43imperial: MUD WEIGHT 8.70
1655.29imperial: Connection at 1655.3

1735.00imperial: IN TALLY: HOLE DEPTH SET TO 1472.4
1742.70imperial: Connection at 1746.8
1743.00imperial: IN TALLY: HOLE DEPTH SET TO 1746.8
1743.00imperial: HOOKLOAD WAS RECALIBRATED
1743.00imperial: ZDiffPressure from SideKick sk-06-03-3103
1743.00imperial: ZWOB from SideKick sk-06-03-3103
1746.79imperial: SURVEY @ 1696 INC 17.4 AZI 297.3 TVD 1651.02 ROTATING

1770
1780
1790
1800
1810
1820
1830
1840
1850
1860
1870
1880
1890
1900
1910
1920
1930
1940
1950
1960
1970
1980

1820.00imperial: MUD VIS 0.41
1820.00imperial: MUD WEIGHT 8.70

1837.00imperial: MUD VIS 0.43
1837.00imperial: MUD WEIGHT 8.70
1837.98imperial: RIG SERVICE
1837.98imperial: SLIDING
1838.00imperial: IN TALLY: HOLE DEPTH SET
TO 1838.3
1838.91imperial: SURVEY @ 1788 INC 15.9 AZI
294.4

1863.21imperial: ROTATING

1903.00imperial: MUD VIS 0.42
1904.00imperial: MUD WEIGHT 8.70

1928.00imperial: IN TALLY: HOLE DEPTH SET
TO 1929.8
1928.96imperial: Connection at 1929.8
1929.00imperial: BIT DEPTH CHANGED TO
1930.0 FEET
1929.76imperial: SLIDING SURVEY @ 1879 INC
17.1 AZI 296.7
1929.76imperial: ZDiffPressure from SideKick
sk-06-03-3103

1964.61imperial: ROTATING

1990
2000
2010
2020
2030
2040
2050
2060
2070
2080
2090
2100
2110
2120
2130
2140
2150
2160
2170
2180
2190
2200

2017.53imperial: Connection at 2021.3
2018.00imperial: IN TALLY: HOLE DEPTH SET TO 2021.3
2021.26imperial: SLIDING

2041.66imperial: ROTATING

2096.00imperial: IN TALLY: HOLE DEPTH SET TO 2112.8
2096.00imperial: HOOK LOAD THRESHOLD RECALIBRATED TO 34
2096.00imperial: HOOKLOAD WAS RECALIBRATED
2096.49imperial: Connection at 2112.8

2112.82imperial: SURVEY @2062 INC 20.2 AZI 301.5 TVD 1999.92
2112.82imperial: ROTATING

2135.00imperial: HOOK LOAD THRESHOLD RECALIBRATED TO 36

2186.00imperial: MUD VIS 0.42
2187.18imperial: MUD WEIGHT 8.80

2192.38imperial: Connection at 2204.4
2195.00imperial: IN TALLY: HOLE DEPTH SET TO 2204.4

2204.37imperial: SURVEY @ 2154 INC 19.7 AZI 300.3 TVD 2086.40

2210
2220
2230
2240
2250
2260
2270
2280
2290
2300
2310
2320
2330
2340
2350
2360
2370
2380
2390
2400
2410
2420

2204.37imperial: ROTATING

2226.68imperial: PUMP SWEEP

2292.51imperial: Connection at 2295.8
2295.00imperial: IN TALLY: HOLE DEPTH SET TO 2295.8
2295.84imperial: SURVEY @ 2245' INC. 19.1 AZ 299.6
2296.43imperial: SLIDING

2339.48imperial: ROTATING

2356.70imperial: ROTATING

2385.00imperial: IN TALLY: HOLE DEPTH SET TO 2387.3
2387.26imperial: Connection at 2387.3
2387.26imperial: SURVEY @ 2337 INC 19.5 AZI 304.7 TVD 2259.07 ROTATING

2430
2440
2450
2460
2470
2480
2490
2500
2510
2520
2530
2540
2550
2560
2570
2580
2590
2600
2610
2620
2630
2640

2448.00imperial: MUD VIS 0.41
2448.00imperial: MUD WEIGHT 8.80

2478.00imperial: IN TALLY: HOLE DEPTH SET
TO 2478.8
2478.00imperial: ZWOB from SideKick
sk-06-03-3103
2478.00imperial: ZDiffPressure from SideKick
sk-06-03-3103
2478.84imperial: SURVEY@2428/ 18.5 INC/
304.4 AZ/ 2345.1 TVD Connection at 2478.8 SET
C.O.M

2494.65imperial: PUMP SWEEP

2502.00imperial: ZERO ALL PUMPS from
SideKick sk-05-05-1268

2570.00imperial: ZWOB from SideKick
sk-06-03-3103
2570.00imperial: ZDiffPressure from SideKick
sk-06-03-3103
2570.09imperial: SURVEY@2520/ 17.2 INC/
303.3 AZ Connection at 2570.4

2650
2660
2670
2680
2690
2700
2710
2720
2730
2740
2750
2760
2770
2780
2790
2800
2810
2820
2830
2840
2850
2860

2654.48imperial: Connection at 2661.8
2661.00imperial: IN TALLY: HOLE DEPTH SET TO 2661.8
2661.00imperial: ZDiffPressure from SideKick sk-06-03-3103
2661.83imperial: SURVEY@2611'/ 16.4 INC/ 303.1 AZ
2661.83imperial: SLIDING

2684.85imperial: PUMP SWEEP

2694.37imperial: ROTATING

2708.00imperial: MUD VIS 0.45
2708.00imperial: MUD WEIGHT 8.80
2711.00imperial: ZERO ALL PUMPS from SideKick sk-05-05-1268

2753.00imperial: ZDiffPressure from SideKick sk-06-03-3103
2753.00imperial: ZDiffPressure from SideKick sk-06-03-3103
2753.16imperial: Connection at 2753.3
2753.16imperial: SURVEY@ 2703'/ 18.3 INC/ 306.1 AZ
2755.96imperial: ROTATING

2844.00imperial: ZDiffPressure from SideKick sk-06-03-3103
2844.47imperial: SURVEY@2794'/ 16.6 INC/ 306.1 AZM
2844.47imperial: Connection at 2844.7
2845.06imperial: SLIDING

2870
2880
2890
2900
2910
2920
2930
2940
2950
2960
2970
2980
2990
3000
3010
3020
3030
3040
3050
3060
3070
3080

2870.00imperial: MUD VIS 0.47
2871.00imperial: MUD WEIGHT 8.85
2873.99imperial: PUMP SWEEP

2881.00imperial: ZERO ALL PUMPS from
SideKick sk-05-05-1268

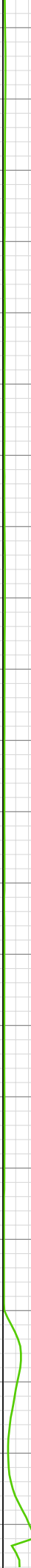
2936.00imperial: ZDiffPressure from SideKick
sk-06-03-3103
2936.06imperial: Connection at 2936.2
2936.08imperial: ROTATING SURVEY @2886/
19.2 INC/ 302.6 AZ/ 2781.9 TVD

3027.00imperial: ZDiffPressure from SideKick
sk-06-03-3103
3027.01imperial: SLIDING
3027.01imperial: Connection at 3027.4
3027.01imperial: SURVEY @2977/ 17.9 INC/
301.7 AZ

3062.76imperial: ROTATING

3082.00imperial: ZERO ALL PUMPS from
SideKick sk-05-05-1268

3090
3100
3110
3120
3130
3140
3150
3160
3170
3180
3190
3200
3210
3220
3230
3240
3250
3260
3270
3280
3290
3300



3118.00imperial: MUD WEIGHT 8.90
3118.00imperial: ZWOB from SideKick
sk-06-03-3103
3118.00imperial: ZDiffPressure from SideKick
sk-06-03-3103
3118.34imperial: MUD VIS 0.52
3118.34imperial: SURVEY @3068'/ 19.5 INC/
296.9 AZ
3120.29imperial: Connection at 3118.8

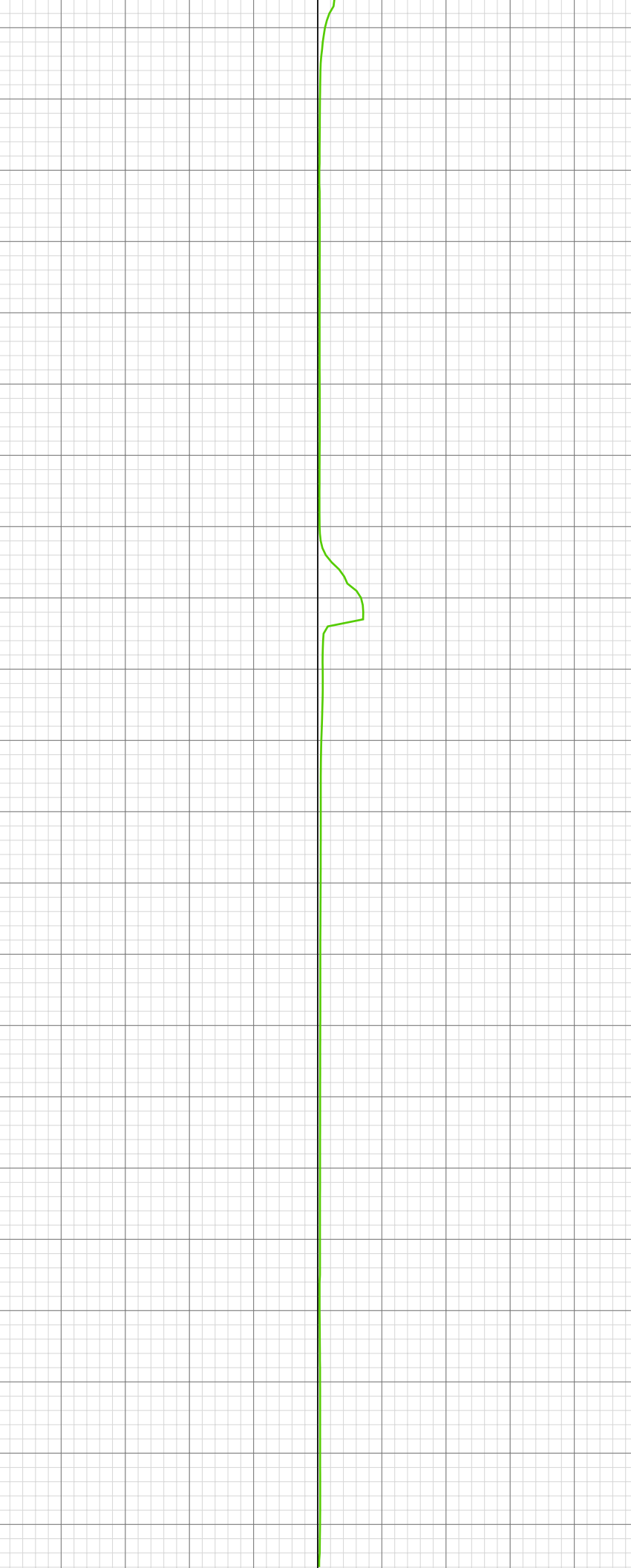
3208.00imperial: IN TALLY: HOLE DEPTH SET
TO 3210.2
3208.00imperial: ZWOB from SideKick
sk-06-03-3103
3208.00imperial: ZDiffPressure from SideKick
sk-06-03-3103
3210.20imperial: SURVEY @3160'/ 18.1 INC/
296.0 AZ
3210.20imperial: Connection at 3210.2
3210.20imperial: ROTATING

3248.77imperial: ZERO ALL PUMPS from
SideKick sk-05-05-1268

3287.01imperial: MUD VIS 0.52
3287.99imperial: MUD WEIGHT 8.90

3300.98imperial: IN TALLY: HOLE DEPTH SET
TO 3301.8
3301.48imperial: Connection at 3301.8 SURVEY
@3251'/ 17.1 INC/ 294.7 AZ

3310
3320
3330
3340
3350
3360
3370
3380
3390
3400
3410
3420
3430
3440
3450
3460
3470
3480
3490
3500
3510
3520



3393.01imperial: Connection at 3393.2
SURVEY@3343/ 18.8 INC/ 297.5 AZ/ 3215.8 TVD
3393.01imperial: ZWOB from SideKick
sk-06-03-3103
3393.01imperial: ZDiffPressure from SideKick
sk-06-03-3103

3477.00imperial: MUD VIS 0.52
3477.00imperial: MUD WEIGHT 8.95
3482.48imperial: Connection at 3484.5
3483.99imperial: ZWOB from SideKick
sk-06-03-3103
3484.42imperial: SURVEY@3434/ 18.0 INC/
297.2 AZ

3530
3540
3550
3560
3570
3580
3590
3600
3610
3620
3630
3640
3650
3660
3670
3680
3690
3700
3710
3720
3730
3740



3575.98imperial: IN TALLY: HOLE DEPTH SET TO 3576.1
3575.98imperial: ZWOB from SideKick sk-06-03-3103
3576.12imperial: Connection at 3576.1
3576.12imperial: SURVEY@3526/ 17.1 INC/ 296.5 AZ

3600.98imperial: ZERO ALL PUMPS from SideKick sk-05-05-1268

3666.99imperial: MUD VIS 0.54
3666.99imperial: MUD WEIGHT 9.00
3666.99imperial: ZDiffPressure from SideKick sk-06-03-3103
3666.99imperial: ZDiffPressure from SideKick sk-06-03-3103
3667.42imperial: Connection at 3667.7
3667.42imperial: SURVEY@3617/ 16.3 INC/ 295.1 AZ
3667.42imperial: SLIDING

3699.15imperial: ROTATING

3750
3760
3770
3780
3790
3800
3810
3820
3830
3840
3850
3860
3870
3880
3890
3900
3910
3920
3930
3940
3950
3960

3756.99imperial: IN TALLY: HOLE DEPTH SET TO 3759.4
3756.99imperial: ZDiffPressure from SideKick sk-06-03-3103
3756.99imperial: ZWOB from SideKick sk-06-03-3103
3759.35imperial: Connection at 3759.4 SURVEY @3709/ 18.5 INC/ 296.8 AZ
3761.58imperial: ROTATING

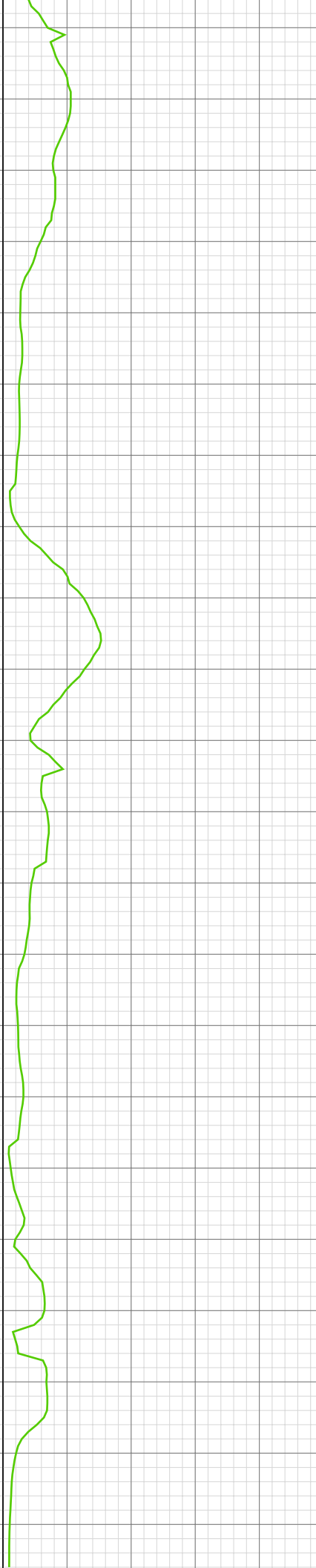
3850.92imperial: MUD WEIGHT 9.05
3850.92imperial: Connection at 3850.9
3850.92imperial: SURVEY @3800/ 17.7 INC/ 295.5 AZ
3850.98imperial: IN TALLY: HOLE DEPTH SET TO 3850.9
3850.98imperial: MUD VIS 0.51
3851.74imperial: SLIDING

3878.15imperial: ROTATING

3883.99imperial: ZERO ALL PUMPS from SideKick sk-05-05-1268

3941.99imperial: ZWOB from SideKick sk-06-03-3103
3941.99imperial: ZDiffPressure from SideKick sk-06-03-3103
3942.52imperial: IN TALLY: HOLE DEPTH SET TO 3942.5
3942.52imperial: Connection at 3942.5 ROTATING SURVEY @3892/ 18.6 INC/ 299.5 AZ

3970
3980
3990
4000
4010
4020
4030
4040
4050
4060
4070
4080
4090
4100
4110
4120
4130
4140
4150
4160
4170
4180



4033.01imperial: ZWOB from SideKick
sk-06-03-3103
4033.01imperial: ZDiffPressure from SideKick
sk-06-03-3103
4033.89imperial: Connection at 4033.8
4033.89imperial: SURVEY@3983/ 17.5 INC/ 297
AZ/ 3825.2 TVD

4093.01imperial: MUD WEIGHT 9.05
4093.44imperial: MUD VIS 0.47

4125.00imperial: ZDiffPressure from SideKick
sk-06-03-3103
4125.30imperial: SPR
4125.30imperial: Connection at 4125.4
4126.80imperial: SLIDING
4128.41imperial: SURVEY@4075/ 16.0 INC/
292.4 AZ

4153.05imperial: ROTATING

4158.01imperial: ZERO ALL PUMPS from
SideKick sk-05-05-1268
4162.01imperial: MUD VIS 0.47
4162.01imperial: MUD WEIGHT 9.10

4190
4200
4210
4220
4230
4240
4250
4260
4270
4280
4290
4300
4310
4320
4330
4340
4350
4360
4370
4380
4390
4400



4198.16imperial: ADDING SAWDUST

4216.99imperial: IN TALLY: HOLE DEPTH SET TO 4217.0
4217.03imperial: MAKE UP WATER 25-30 GPM DEWATERING
4217.03imperial: Connection at 4217.0
4218.50imperial: SLIDING

4243.01imperial: MUD VIS 0.50
4243.01imperial: MUD WEIGHT 8.90

4300.00imperial: MUD VIS 0.52
4300.98imperial: MUD WEIGHT 8.90

4308.56imperial: FILL PILL TANK
4308.56imperial: SURVEY@4258/ 16.3 INC/ 300.4 AZ
4308.83imperial: Connection at 4308.5
4309.78imperial: SLIDING

4345.08imperial: ROTATING

4399.41imperial: SURVEY@4350/ 15.5 INC/ 310.7 AZ/ 4177.5 TVD
4400.00imperial: IN TALLY: HOLE DEPTH SET TO 4400.1
4400.00imperial: PVT Horn Disabled
4400.00imperial: ZWOB from SideKick sk-06-03-3103
4400.00imperial: ZDiffPressure from SideKick ck-06-03-3103

4410
4420
4430
4440
4450
4460
4470
4480
4490
4500
4510
4520
4530
4540
4550
4560
4570
4580
4590
4600
4610
4620

sk-06-03-3103
4400.07imperial: Connection at 4400.1
4406.92imperial: ROTATING

4491.54imperial: Connection at 4491.6
4491.54imperial: SLIDING
4491.54imperial: SURVEY @ 4441 INC.14.3
AZTH 308.2

4513.71imperial: ROTATING

4535.99imperial: ZERO ALL PUMPS from
SideKick sk-05-05-1268

4553.02imperial: PUMP SWEEP

4582.58imperial: Connection at 4583.1
4583.01imperial: ZWOB from SideKick
sk-06-03-3103
4583.01imperial: ZDiffPressure from SideKick
sk-06-03-3103
4584.15imperial: SURVEY @ 4533 INC 15.2 AZI
313.3 TVD 4354.45

4604.63imperial: ROTATING

4630
4640
4650
4660
4670
4680
4690
4700
4710
4720
4730
4740
4750
4760
4770
4780
4790
4800
4810
4820
4830
4840

4674.90imperial: Connection at 4674.6
4674.90imperial: SURVEY @ 4624 INC 14.2 AZI
311.8 TVD 4442.47 ROTATING

4760.99imperial: MUD WEIGHT 9.05
4761.06imperial: MUD VIS 43.00
4766.11imperial: Connection at 4765.9
4766.11imperial: SLIDING

4772.01imperial: SURVEY @ 4715 INC 13.4 AZI
311.2

4790.72imperial: ROTATING

4850
4860
4870
4880
4890
4900
4910
4920
4930
4940
4950
4960
4970
4980
4990
5000
5010
5020
5030
5040
5050
5060

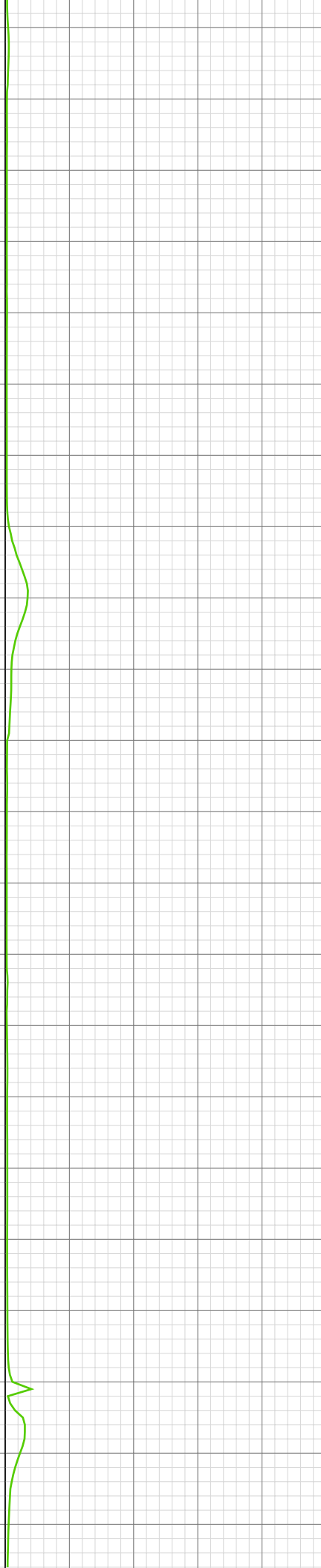
4856.99imperial: ZDiffPressure from SideKick
sk-06-03-3103
4860.30imperial: Connection at 4857.5
4863.58imperial: SURVEY @ 4807 INC 14.3 AZI
307.1 SLIDING

4887.40imperial: ROTATING

4948.98imperial: Connection at 4949.0
4948.98imperial: SURVEY @ 4899 INC 14.9 AZI
296.9 ROTATING
4950.07imperial: ZDiffPressure from SideKick
sk-06-03-3103

4974.11imperial: ROTATING

5039.99imperial: MUD WEIGHT 9.10
5040.55imperial: MUD VIS 47.00
5040.55imperial: Connection at 5040.6
5040.55imperial: ZDiffPressure from SideKick
sk-06-03-3103
5041.96imperial: SURVEY @ 4990 INC 13.2 AZI
293.9
5044.09imperial: SLIDING



5070
5080
5090
5100
5110
5120
5130
5140
5150
5160
5170
5180
5190
5200
5210
5220
5230
5240
5250
5260
5270
5280



5102.53imperial: ROTATING

5131.00imperial: 021TGAS 03090394 SW0.27
HW25.00 - 111 days on
5131.69imperial: Connection at 5132.2
5134.81imperial: SURVEY @ 5082 INC 8.9 AZI
294.7 SLIDING

5193.67imperial: ROTATING

5222.05imperial: Connection at 5223.5
5222.05imperial: SURVEY @ 5173 INC 4.3 AZI
290.4 SLIDING

5262.99imperial: ZWOB from SideKick
sk-06-03-3103
5263.42imperial: ROTATING

5290
5300
5310
5320
5330
5340
5350
5360
5370
5380
5390
5400
5410
5420
5430
5440
5450
5460
5470
5480
5490
5500

5308.99imperial: MUD VIS 45.00
5308.99imperial: MUD WEIGHT 9.10
5312.07imperial: Connection at 5315.0
5312.07imperial: SURVEY @ 5265 INC .9 AZI
18.2 TVD 5070.05 ROTATING

5387.99imperial: ZDiffPressure from SideKick
sk-06-03-3103
5388.85imperial: SLOW DOWN
PUMPS/ROT/BACK OFF WOB

5403.12imperial: Connection at 5406.4 SURVEY
@ 5356 INC .4 AZI 22.6 TVD 5161.05
5403.12imperial: ROTATING
5403.12imperial: ZDIFF from DHC

5474.02imperial: MUD VIS 49.00
5474.02imperial: MUD WEIGHT 9.15

5494.00imperial: ZDIFF from DHC
5494.65imperial: SURVEY @ 5447 INC .3 AZI
32.3 TVD 5252.04
5494.65imperial: ROTATING
5494.65imperial: Connection at 5497.9

5510
5520
5530
5540
5550
5560
5570
5580
5590
5600
5610
5620
5630
5640
5650
5660
5670
5680
5690
5700
5710
5720

5585.89imperial: Connection at 5589.4
5585.89imperial: SURVEY @ 5539 INC .3 AZI
63.0 TVD 5344.04 ROTATING

5677.00imperial: MUD VIS 48.00
5677.00imperial: MUD WEIGHT 9.20
5677.62imperial: Connection at 5680.8
5677.62imperial: SURVEY@5630/ 0.3 INC/ 36.1
AZ/ 5435 TVD
5677.62imperial: ROTATING

5730
5740
5750
5760
5770
5780
5790
5800
5810
5820
5830
5840
5850
5860
5870
5880
5890
5900
5910
5920
5930
5940



5769.19imperial: Connection at 5772.2
5769.19imperial: SURVEY @ 5722 INC .00 AZI
280.6 TVD 5527.04 ROTATING

5814.99imperial: MUD VIS 49.00
5814.99imperial: MUD WEIGHT 9.20

5860.01imperial: ZDiffPressure from SideKick
sk-06-03-3103
5860.24imperial: RIG SERVICE
5860.24imperial: SURVEY @ 5813 INC .8 AZI
241.8 TVD 5618.04
5860.24imperial: Connection at 5863.6
5866.90imperial: SLIDING SURVEY @ 5813 INC
.4 AZI 250.2

5886.29imperial: ROTATING

5950
5960
5970
5980
5990
6000
6010
6020
6030
6040
6050
6060
6070
6080
6090
6100
6110
6120
6130
6140
6150
6160

5952.00imperial: ZWOB from DHC
5952.00imperial: ZDIFF from DHC
5952.49imperial: SURVEY @ 5904 INC .6 AZI
94.7 TVD 5709.04 ROTATING
5952.49imperial: Connection at 5955.0

6043.01imperial: ZWOB from DHC
6043.01imperial: ZDIFF from DHC
6043.41imperial: Connection at 6046.4
6043.41imperial: SURVEY @5996/ 0.4 INC/ 116.4
AZ/ 5801 TVD

6097.01imperial: MUD WEIGHT 9.30
6097.87imperial: MUD VIS 49.00

6134.25imperial: Connection at 6137.9
6134.25imperial: SURVEY@6987/ 0.4 INC/ 225.4
AZ/ 5892 TVD SURVEY DEPTH CORRECTION
6087'



6170
6180
6190
6200
6210
6220
6230
6240
6250
6260
6270
6280
6290
6300
6310
6320
6330
6340
6350
6360
6370
6380



6224.25imperial: Connection at 6229.5
6224.25imperial: SURVEY@6179/ 0.7 INC/ 208.7
AZ/ 5984 TVD

6279.00imperial: MUD VIS 48.00
6279.00imperial: MUD WEIGHT 9.40

6314.99imperial: ZDIFF from DHC
6315.32imperial: Connection at 6321.0
6315.32imperial: SURVEY@6271/ 0.9 INC/ 191.6
AZ/6076 TVD
6315.32imperial: SLIDING
6321.00imperial: IN TALLY: HOLE DEPTH SET
TO 6321.0

6347.83imperial: ROTATING

6390
6400
6410
6420
6430
6440
6450
6460
6470
6480
6490
6500
6510
6520
6530
6540
6550
6560
6570
6580
6590
6600

6410.01imperial: ZWOB from DHC
6410.99imperial: Connection at 6412.4
6410.99imperial: SURVEY@6362/ 1.1 INC/ 4.2
AZ/ 6167 TVD
6411.45imperial: ZDIFF from DHC
6416.01imperial: MUD VIS 50.00
6416.01imperial: MUD WEIGHT 9.40

6502.00imperial: ZWOB from DHC
6502.30imperial: Connection at 6503.9
6502.30imperial: SURVEY@6453/ 1.1 INC/ 353.4
AZ/ 6257.9 TVD

6560.99imperial: 022TGAS-Trap needs service
6560.99imperial: 046TGAS-Analyzer air pressure
= zero, check air supply. Standby

6577.00imperial: MUD VIS 48.00
6577.00imperial: MUD WEIGHT 9.45

6593.18imperial: Connection at 6595.3
6593.18imperial: SURVEY@6545/ 1.2 INC/ 318.7
AZ
6593.18imperial: SLIDING

6610
6620
6630
6640
6650
6660
6670
6680
6690
6700
6710
6720
6730
6740
6750
6760
6770
6780
6790
6800
6810
6820

6612.83imperial: ROTATING

6635.01imperial: 002TGAS-Manual zero

6641.01imperial: ZWOB from DHC

6644.00imperial: 003TGAS-Manual flush

6683.99imperial: ZDIFF from DHC
6684.55imperial: Connection at 6686.8
6684.55imperial: SURVEY@6636/ 0.9 INC/ 37.1
AZ/ 6440.9 TVD
6687.99imperial: MUD VIS 48.00
6687.99imperial: MUD WEIGHT 9.50

6750.00imperial: ZWOB from DHC
6750.00imperial: ZDIFF from DHC

6775.00imperial: ZDIFF from DHC
6775.00imperial: IN TALLY: HOLE DEPTH SET
TO 6778.2
6775.62imperial: Connection at 6778.2
6775.62imperial: SURVEY@6728/ 0.5 INC/ 72.2
AZ/ 6532.9 TVD
6775.62imperial: ZWOB from DHC

6810.01imperial: MUD VIS 46.00
6810.01imperial: MUD WEIGHT 9.55

6830
6840
6850
6860
6870
6880
6890
6900
6910
6920
6930
6940
6950
6960
6970
6980
6990
7000
7010
7020
7030
7040

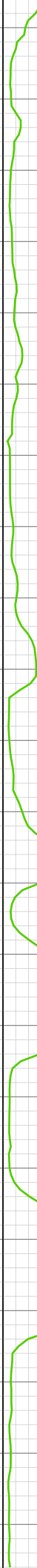
6864.01imperial: ZDIFF from DHC
6864.40imperial: Connection at 6869.7
SURVEY @6819/ 0.4 INC/ 36.0 AZ/ 6623.9 TVD
6866.01imperial: IN TALLY: HOLE DEPTH SET
TO 6869.7
6871.23imperial: SLIDING

6887.70imperial: ROTATING

6914.99imperial: MUD VIS 49.00
6914.99imperial: MUD WEIGHT 9.60

6958.01imperial: ZDIFF from DHC
6958.96imperial: Connection at 6961.1
6959.51imperial: SURVEY @ 6911 INC 1.7 AZI
131.4 TVD 6715.89
6960.30imperial: ROTATING

7050
7060
7070
7080
7090
7100
7110
7120
7130
7140
7150
7160
7170
7180
7190
7200
7210
7220
7230
7240
7250
7260



7050.16imperial: Connection at 7052.6
7050.16imperial: SURVEY @ 7002 INC 1.1 AZI
150.8 TVD 6808.86 ROTATING

7056.99imperial: MUD VIS 46.00
7057.51imperial: MUD WEIGHT 9.60

7142.42imperial: Connection at 7144.0
7142.42imperial: SURVEY @ 7093 INC .9 AZI
174.0 TVD 6897.85 ROTATING

7173.00imperial: MUD VIS 45.00
7173.00imperial: MUD WEIGHT 9.65

7218.01imperial: 021TGAS 03090394 SW0.27
HW25.00 - 112 days on

7227.99imperial: MUD VIS 50.00
7229.00imperial: MUD WEIGHT 9.65
7235.01imperial: ZDiffPressure from SideKick
sk-06-03-3103
7235.04imperial: Connection at 7235.4
7237.40imperial: SLIDING

7241.21imperial: SURVEY @ 7185 INC 1.3 AZI
201.8

7261.71imperial: ROTATING

7270
7280
7290
7300
7310
7320
7330
7340
7350
7360
7370
7380
7390
7400
7410
7420
7430
7440
7450
7460
7470
7480



7302.00imperial: MUD VIS 52.00
7302.00imperial: MUD WEIGHT 9.65

7326.31imperial: Connection at 7327.0
7330.12imperial: SURVEY @ 7276 INC .5 AZI
194.1 TVD 7080.82
7333.04imperial: ROTATING

7364.01imperial: MUD VIS 47.00
7364.99imperial: MUD WEIGHT 9.65

7416.67imperial: Connection at 7418.4
7416.67imperial: SURVEY @ 7276 INC .6 AZI 215
TVD 7080.82
7416.67imperial: ROTATING

7490
7500
7510
7520
7530
7540
7550
7560
7570
7580
7590
7600
7610
7620
7630
7640
7650
7660
7670
7680
7690
7700

7508.01imperial: MUD VIS 50.00
7508.01imperial: MUD WEIGHT 9.85
7508.01imperial: ZDiffPressure from SideKick
sk-06-03-3103
7508.30imperial: Connection at 7510.0
7508.30imperial: SLIDING
7515.26imperial: SURVEY @ 7459 INC .9 AZI
227.4

7545.87imperial: ROTATING

7600.00imperial: ZDIFF from DHC
7600.00imperial: MUD VIS 46.00
7600.00imperial: MUD WEIGHT 9.85
7600.75imperial: RIG SERVICE
7600.75imperial: SURVEY @ 7551 INC 1.0 AZI
8.8 TVD 7355.80
7600.75imperial: ROTATING Connection at
7601.4

7690.72imperial: Connection at 7692.9
7690.72imperial: SURVEY @ 7642/ 1.0 INC/ 8.3
AZ/ 7446.8 TVD

7710
7720
7730
7740
7750
7760
7770
7780
7790
7800
7810
7820
7830
7840
7850
7860
7870
7880
7890
7900
7910
7920



7756.99imperial: MUD VIS 47.00
7758.01imperial: MUD WEIGHT 10.00

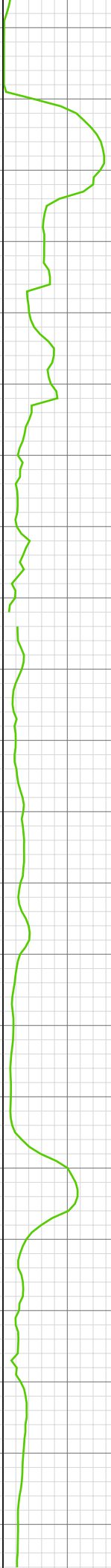
7782.28imperial: Connection at 7784.4
7782.28imperial: SURVEY@7734/ 0.8 INC/ 343.8
TVD/ 7538.7 TVD

7825.98imperial: MUD VIS 47.00
7825.98imperial: MUD WEIGHT 10.00

7871.00imperial: ZWOB from DHC
7871.06imperial: Connection at 7875.9
7871.06imperial: SURVEY@7825/ 0.7 INC/ 316.2
AZ/ 7629.7 TVD
7872.01imperial: IN TALLY: HOLE DEPTH SET
TO 7875.9

7883.01imperial: MUD VIS 46.00
7883.01imperial: MUD WEIGHT 10.15

7930
7940
7950
7960
7970
7980
7990
8000
8010
8020
8030
8040
8050
8060
8070
8080
8090
8100
8110
8120
8130
8140



7964.99imperial: ZWOB from DHC
7964.99imperial: ZDIFF from DHC
7965.19imperial: Connection at 7967.4
7965.19imperial: SURVEY@7917/ 1.1 INC/ 272.7
AZ/ 7721.7 TVD

7987.99imperial: MUD VIS 48.00
7987.99imperial: MUD WEIGHT 10.25

8000.98imperial: MUD VIS 47.00
8000.98imperial: MUD WEIGHT 10.40
8012.01imperial: 021TGAS 03090394 SW0.27
HW25.00 - 113 days on
8012.01imperial: ZDiffPressure from SideKick
sk-06-03-3103
8012.01imperial: ZDiffPressure from SideKick
sk-06-03-3103
8012.27imperial: FLOW CHECK
8012.27imperial: FLOW CHECK

8029.99imperial: MUD VIS 48.00
8030.77imperial: MUD WEIGHT 10.45

8058.01imperial: ZDiffPressure from SideKick
sk-06-03-3103
8058.56imperial: Connection at 8059.2
8058.56imperial: SURVEY@8009/ 0.8 INC/ 260.7
AZ/ 7813.7 TVD

8102.99imperial: HOLE DEPTH CHANGED TO
8012.0 FEET
8102.99imperial: BIT DEPTH CHANGED TO
7957.0 FEET
8102.99imperial: ZERO ALL PUMPS from
SideKick sk-06-03-3103
8102.99imperial: ZDIFF from DHC
8102.99imperial: ZWOB from DHC

8150
8160
8170
8180
8190
8200
8210
8220
8230
8240
8250
8260
8270
8280
8290
8300
8310
8320
8330
8340
8350
8360

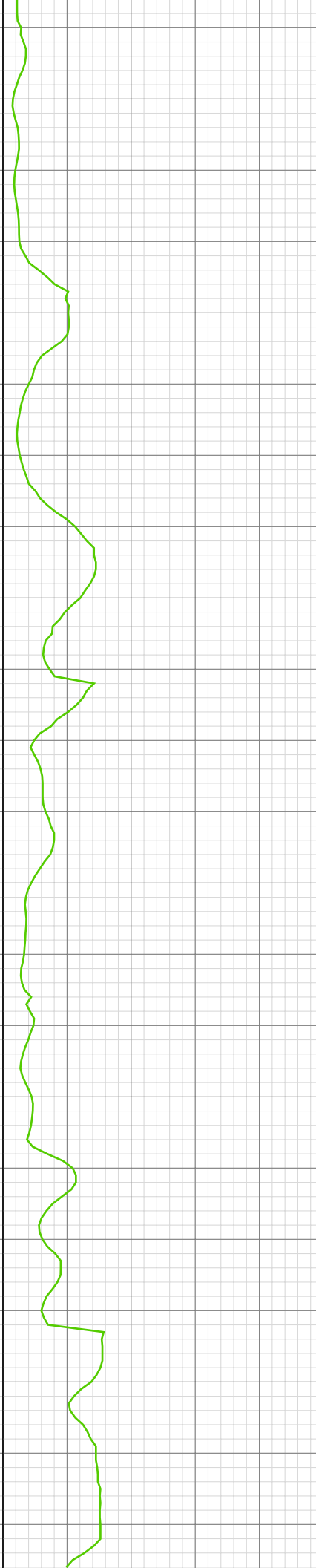
8149.02imperial: MUD VIS 46.00
8149.02imperial: MUD WEIGHT 10.45
8150.00imperial: RIG SERVICE
8150.00imperial: Connection at 8150.6
8150.00imperial: SURVEY@8100/ 1.0 INC/ 253.2
AZ/ 7904.7 TVD

8221.00imperial: MUD VIS 48.00
8221.00imperial: MUD WEIGHT 10.45

8241.04imperial: SURVEY@8191/ 1.3 INC/ 253.6/
7995.7 TVD
8241.04imperial: Connection at 8242.0

8333.04imperial: Connection at 8333.4
8333.04imperial: SURVEY@8283/ 1.3 INC/ 250.1
AZ/ 8087.7 TVD

8349.02imperial: MUD VIS 47.00
8349.02imperial: MUD WEIGHT 10.45



8370
8380
8390
8400
8410
8420
8430
8440
8450
8460
8470
8480
8490
8500
8510
8520
8530
8540
8550
8560
8570
8580

8423.00imperial: ZDIFF from DHC
8423.95imperial: Connection at 8424.9
8423.95imperial: SURVEY@8374/ 1.6 INC/ 255.2
AZ/ 8178.7 TVD

8431.33imperial: SLIDING

8456.99imperial: ZWOB from SideKick
sk-06-03-3103
8457.38imperial: ROTATING

8485.99imperial: MUD VIS 46.00
8485.99imperial: MUD WEIGHT 10.50

8514.01imperial: ZWOB from DHC
8514.01imperial: ZDIFF from DHC
8514.67imperial: Connection at 8516.3
8514.67imperial: SURVEY@8466/ 2.6 INC/ 138.4
AZ/ 8270.6 TVD

8590
8600
8610
8620
8630
8640
8650
8660
8670
8680
8690
8700
8710
8720
8730
8740
8750
8760
8770
8780
8790
8800

8605.77imperial: SURVEY@8557/ 2.4 INC/ 152.9
AZ/ 8361.5 TVD
8606.27imperial: Connection at 8607.7

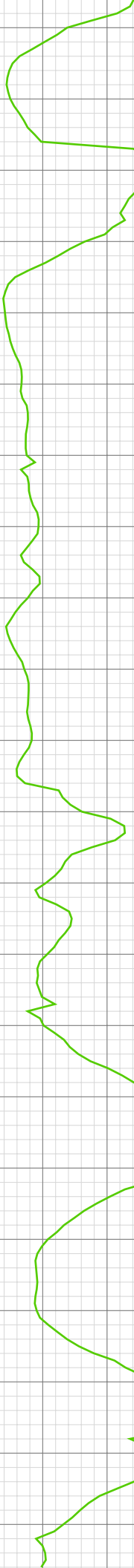
8619.00imperial: MUD VIS 49.00
8619.00imperial: MUD WEIGHT 10.70

8696.72imperial: Connection at 8699.3
8696.72imperial: SURVEY@8649/ 2.2 INC/ 154.6
AZ/ 8453.4 TVD

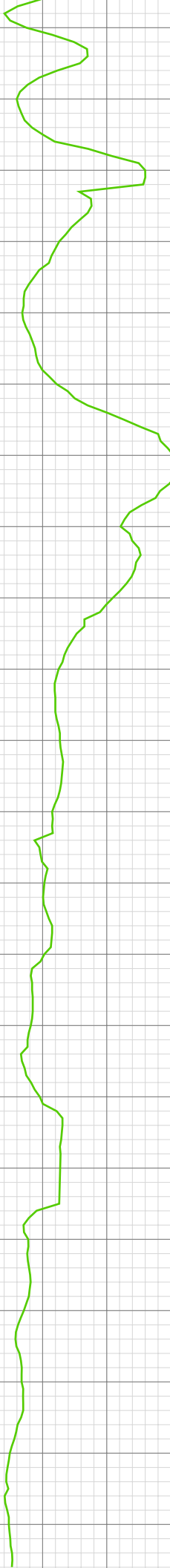
8786.98imperial: SURVEY@8740/ 1.9 INC/ 167.4
AZ/ 8544.4 TVD
8786.98imperial: Connection at 8790.9

8794.00imperial: MUD VIS 46.00
8794.00imperial: MUD WEIGHT 10.85

8800.79imperial: SLIDING



8810
8820
8830
8840
8850
8860
8870
8880
8890
8900
8910
8920
8930
8940
8950
8960
8970
8980
8990
9000
9010
9020



8817.06imperial: ROTATING

8839.99imperial: ZDIFF from DHC
8839.99imperial: ZWOB from DHC
8839.99imperial: MUD VIS 45.00
8840.39imperial: SLOW DOWN FOR
FORMATION CHANGE
8840.78imperial: MUD WEIGHT 10.85

8878.08imperial: Connection at 8882.5
8878.08imperial: SURVEY@8832/ 0.3 INC/ 193.8
AZ/ 8636.4 TVD

8887.99imperial: MUD VIS 46.00
8887.99imperial: MUD WEIGHT 11.00

8896.39imperial: BUILDING VOLUME

8939.99imperial: ZDIFF from DHC

8968.01imperial: IN TALLY: HOLE DEPTH SET
TO 8974.1
8968.14imperial: Connection at 8974.1
8968.34imperial: SURVEY@8924/ 0.2 INC/ 196.2
AZ/ 8728.4 TVD

8980.94imperial: BUILDING VOLUME

8998.39imperial: WT 10.9+ VIS 47

9030
9040
9050
9060
9070
9080
9090
9100
0110
0110
06:1310130
06:1310140
06:1310150
06:1310160
06:1310170
06:1410180
10190

9058.73imperial: VIS 45 WT 11.0+
9064.50imperial: Connection at 9065.7
9064.50imperial: SURVEY@9015'/ 0.4 INC/ 195.6
AZ/ 8819.4 TVD
9064.99imperial: IN TALLY: HOLE DEPTH SET
TO 9065.7
9104.00imperial: ZERO ALL PUMPS from
SideKick sk-06-03-3103
9104.00imperial: ZERO ALL PUMPS from
SideKick sk-06-03-3103
9104.00imperial: 021TGAS 03090394 SW0.27
HW25.00 - 114 days on
9104.00imperial: BIT DEPTH CHANGED TO
1690.0 FEET
9104.00imperial: ZERO ALL PUMPS from
SideKick sk-06-03-3103
9104.00imperial: ZERO ALL PUMPS from
SideKick sk-06-03-3103
9104.00imperial: ZERO ALL PUMPS from
SideKick sk-06-03-3103
9104.00imperial: ZERO ALL PUMPS from
SideKick sk-06-03-3103
9104.00imperial: ZERO ALL PUMPS from
SideKick sk-06-03-3103
9104.04imperial: SURVEY
9104.04imperial: SURVEY@9104'/ 0.7 INC/ 227.1
AZ/ 8908.4 TVD
9104.04imperial: SURVEY DEPTH CORRECTION
9054'
9104.04imperial: FLOW CHECK
9104.04imperial: FLOW CHECK
9104.04imperial: DOWN LOAD MWD INFO
9104.04imperial: LAY DOWN MOTOR & TAKE
OFF BIT
9104.04imperial: JET CELLER
9104.04imperial: FILL PIPE
9104.04imperial: CIRCULATE
9104.04imperial: WORK ON CASING POWER
UNIT
9104.04imperial: FILL PIPE
9104.04imperial: CIRCULATE
9104.04imperial: CIRCULATE
9104.04imperial: CIRCULATE
9104.04imperial: ZERO ALL PUMPS from
SideKick sk-06-03-3103
9104.04imperial: CIRCULATE
9104.04imperial: CIRCULATE
9104.04imperial: CHANGE ELEVATORS

10183.99imperial: ATTEMPTED TO ZERO TOTAL
STROKES ATTEMPTED TO SET HOLE DEPTH
TO 0.00 feet