
WILLIAMS PRODUCTION RMT INC EBUSINE

**GM 531-27
GRAND VALLEY
Garfield County , Colorado**

**Cement Surface Casing
06-Sep-2010**

Post Job Report

The Road to Excellence Starts with Safety

Sold To #: 300721	Ship To #: 2805300	Quote #:	Sales Order #: 7615700
Customer: WILLIAMS PRODUCTION RMT INC EBUSINE		Customer Rep: WILSON, W.C.	
Well Name: GM		Well #: 531-27	API/UWI #: 05-045-18223
Field: GRAND VALLEY	City (SAP): PARACHUTE	County/Parish: Garfield	State: Colorado
Lat: N 39.496 deg. OR N 39 deg. 29 min. 45.265 secs.		Long: W 108.091 deg. OR W -109 deg. 54 min. 31.147 secs.	
Contractor: H&P 280		Rig/Platform Name/Num: H&P 280	
Job Purpose: Cement Surface Casing			
Well Type: Development Well		Job Type: Cement Surface Casing	
Sales Person: KOHL, KYLE		Srvc Supervisor: LEIST, JAMES	MBU ID Emp #: 362787

Job Personnel

HES Emp Name	Exp Hrs	Emp #	HES Emp Name	Exp Hrs	Emp #	HES Emp Name	Exp Hrs	Emp #
LEIST, JAMES R	2	362787	PRUETT, BRADLEY A	2	475748	SALAZAR, PAUL Omar	2	445614
STEELE, BENJAMIN F	2	458599						

Equipment

HES Unit #	Distance-1 way	HES Unit #	Distance-1 way	HES Unit #	Distance-1 way	HES Unit #	Distance-1 way
10001431	60 mile	10296152C	60 mile	10724643	60 mile	10897797	60 mile
11259882	60 mile						

Job Hours

Date	On Location Hours	Operating Hours	Date	On Location Hours	Operating Hours	Date	On Location Hours	Operating Hours
9-5-10	4	0	9-6-10	3	2			

TOTAL Total is the sum of each column separately

Job

Job Times

Formation Name	Formation Depth (MD)	Top	Bottom	Called Out	Date	Time	Time Zone
					05 - Sep - 2010	17:00	MST
Form Type			BHST	On Location	05 - Sep - 2010	21:00	MST
Job depth MD	990. ft		Job Depth TVD	990. ft	Job Started	06 - Sep - 2010	01:41
Water Depth			Wk Ht Above Floor	4. ft	Job Completed	06 - Sep - 2010	02:25
Perforation Depth (MD)	<i>From</i>		<i>To</i>		Departed Loc	06 - Sep - 2010	03:30

Well Data

Description	New / Used	Max pressure psig	Size in	ID in	Weight lbm/ft	Thread	Grade	Top MD ft	Bottom MD ft	Top TVD ft	Bottom TVD ft
Sales/Rental/3rd Party (HES)											

Description	Qty	Qty uom	Depth	Supplier
PLUG,CMTG, TOP, 9 5/8, HWE, 8.16 MIN/9.06 MA	1	EA		
R/A DENSOMETER W/CHART RECORDER, /JOB, ZI	1	JOB		
PORT. DAS W/CEMWIN; ACQUIRE W/HES, ZI	1	JOB		
ADC (AUTO DENSITY CTRL) SYS, /JOB, ZI	1	JOB		

Tools and Accessories

Type	Size	Qty	Make	Depth	Type	Size	Qty	Make	Depth	Type	Size	Qty	Make
Guide Shoe					Packer					Top Plug	9.625	1	
Float Shoe					Bridge Plug					Bottom Plug			
Float Collar					Retainer					SSR plug set			
Insert Float										Plug Container	9.625	1	
Stage Tool										Centralizers			

Miscellaneous Materials

Gelling Agt	Conc	Surfactant	Conc	Acid Type	Qty	Conc %
Treatment Fld	Conc	Inhibitor	Conc	Sand Type	Size	Qty

Fluid Data									
Stage/Plug #: 1									
Fluid #	Stage Type	Fluid Name	Qty	Qty uom	Mixing Density lbm/gal	Yield ft ³ /sk	Mix Fluid Gal/sk	Rate bbl/min	Total Mix Fluid Gal/sk
1	Water Spacer		20.00	bbl	8.4	.0	.0	.0	
2	Tail Cement	VERSACEM (TM) SYSTEM (452010)	280.0	sacks	12.8	2.11	11.75		
3	Displacement Fluid		74.00	bbl	8.4	.0	.0	.0	
Calculated Values		Pressures		Volumes					
Displacement	74	Shut In: Instant		Lost Returns	0	Cement Slurry	105	Pad	
Top Of Cement	SURFACE	5 Min		Cement Returns	20	Actual Displacement	74	Treatment	
Frac Gradient		15 Min		Spacers	20	Load and Breakdown		Total Job	
Rates									
Circulating		Mixing	8	Displacement	9	Avg. Job	8.5		
Cement Left In Pipe	Amount	40.85 ft	Reason	Shoe Joint					
Frac Ring # 1 @	ID	Frac ring # 2 @	ID	Frac Ring # 3 @	ID	Frac Ring # 4 @	ID		
The Information Stated Herein Is Correct				Customer Representative Signature					

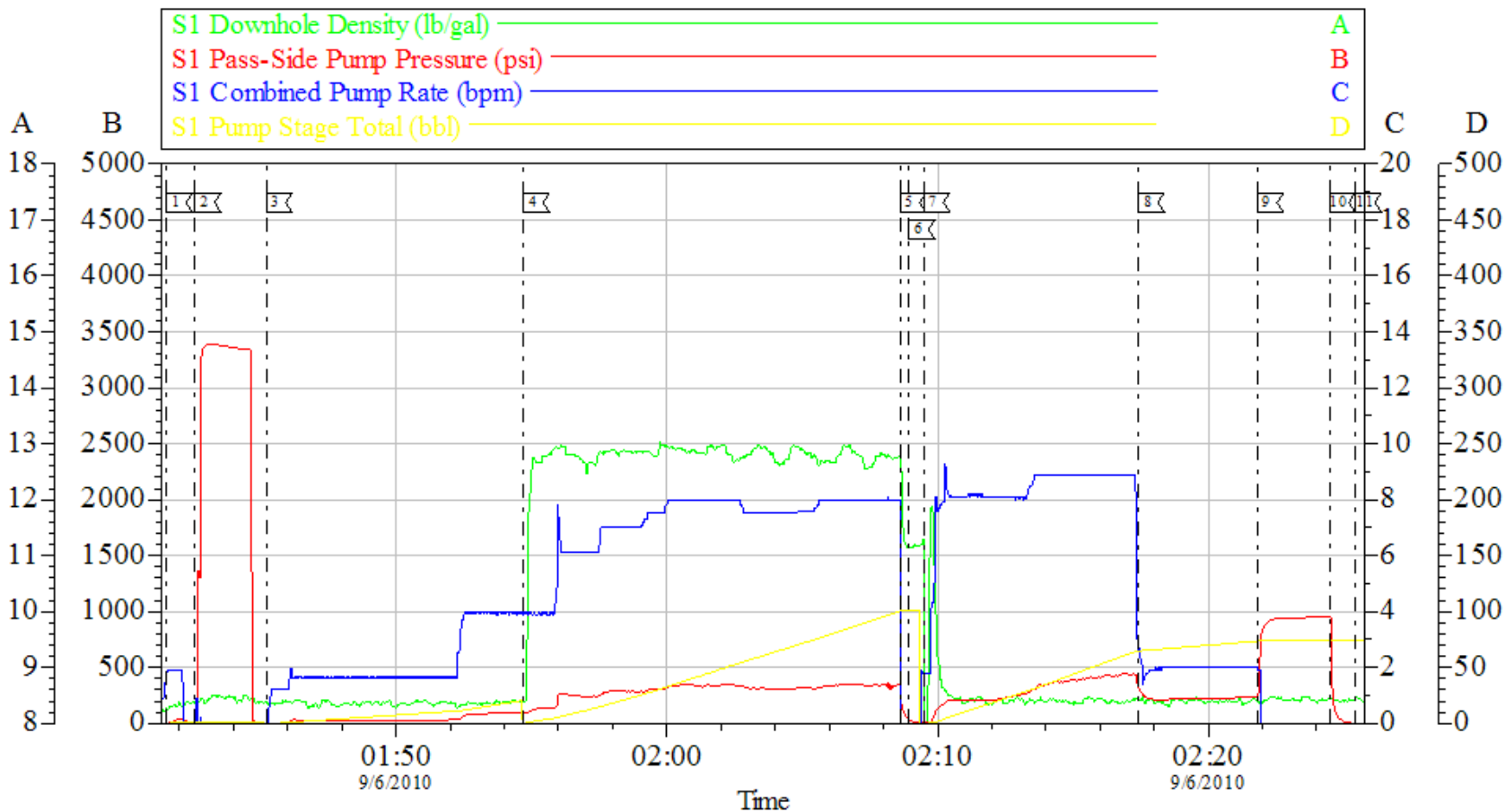
The Road to Excellence Starts with Safety

Sold To #: 300721	Ship To #: 2805300	Quote #:	Sales Order #: 7615700
Customer: WILLIAMS PRODUCTION RMT INC EBUSINE		Customer Rep: WILSON, W.C.	
Well Name: GM	Well #: 531-27	API/UWI #: 05-045-18223	
Field: GRAND VALLEY	City (SAP): PARACHUTE	County/Parish: Garfield	State: Colorado
Legal Description:			
Lat: N 39.496 deg. OR N 39 deg. 29 min. 45.265 secs.		Long: W 108.091 deg. OR W -109 deg. 54 min. 31.147 secs.	
Contractor: H&P 280		Rig/Platform Name/Num: H&P 280	
Job Purpose: Cement Surface Casing			Ticket Amount:
Well Type: Development Well		Job Type: Cement Surface Casing	
Sales Person: KOHL, KYLE		Srvc Supervisor: LEIST, JAMES	MBU ID Emp #: 362787

Activity Description	Date/Time	Cht #	Rate bbl/min	Volume bbl		Pressure psig		Comments
				Stage	Total	Tubing	Casing	
Call Out	09/05/2010 17:00							TP-990.16, TD-1000, S.J.-40.85, HOLE-13 1/2, MUD#-10.4
Pre-Convoy Safety Meeting	09/05/2010 19:00							WITH ALL HES PERSONNEL
Crew Leave Yard	09/05/2010 19:30							RIG CIRULATED FOR 1 HOUR PRIOR TO CMT JOB AT 120 STROKS/MIN WITH 340 PSI , YP -31, PV-47, TEMP-99
Arrive At Loc	09/05/2010 21:00							PULLING PIPE
Assessment Of Location Safety Meeting	09/05/2010 21:10							WITH ALL HES PERSONNEL
Pre-Rig Up Safety Meeting	09/05/2010 21:30							WITH ALL HES PERSONNEL
Rig-Up Completed	09/05/2010 22:00							
Pre-Job Safety Meeting	09/06/2010 01:30							WITH ALL ON LOCATION PERSONNEL
Start Job	09/06/2010 01:41							GOOD CIRULATION THROUGHOUT JOB, NO PIPE MOVEMENT DURING JOB
Pressure Test	09/06/2010 01:42							3300 PSI
Pump Spacer 1	09/06/2010 01:45		4	20			200.0	FRESH WATER
Pump Tail Cement	09/06/2010 01:54		8	105.2			345.0	280 SKS, 12.8 PPG, 2.11 FT3/SK, 11.75 GAL/SK
Shutdown	09/06/2010 02:08							

Activity Description	Date/Time	Cht #	Rate bbl/min	Volume bbl		Pressure psig		Comments
				Stage	Total	Tubing	Casing	
Drop Top Plug	09/06/2010 02:08							AWAY
Pump Displacement	09/06/2010 02:09		9	74.3			406.0	FRESH WATER, 20 BBLs CMT TO SURFACE
Slow Rate	09/06/2010 02:17		2	64			240.0	TO BUMP PLUG
Bump Plug	09/06/2010 02:21		2	74.3			237.0	PLUG BUMPED
Check Floats	09/06/2010 02:24						900.0	THE FLOATS ARE HOLDING
End Job	09/06/2010 02:25							
Pre-Rig Down Safety Meeting	09/06/2010 02:45							WITH ALL HES PERSONNEL
Rig-Down Completed	09/06/2010 03:10							
Pre-Convoy Safety Meeting	09/06/2010 03:30							WITH ALL HES PERSONNEL
Crew Leave Location	09/06/2010 03:45							
Comment	09/06/2010 03:45							THANKYOU FOR USING HALLIBURTON CEMENT, JAMES LEIST AND CREW

WILLIAMS PRODUCTION 9 5/8 SURFACE CASING



1 STARTJOB	01:41:31	2 PRESSURE TEST	01:42:35	3 PUMP H2O SPACER	01:45:12
4 PUMP TAIL CMT	01:54:42	5 SHUTDOWN	02:08:37	6 DROP TOP PLUG	02:08:57
7 PUMP DISPLACEMENT	02:09:30	8 SLOWRATE	02:17:25	9 BUMP PLUG	02:21:49
10 CHECK FLOATS	02:24:28	11 END JOB	02:25:26		

Customer: WILLIAMS	Job Date: 05-Sep-2010	Sales Order #: 7615700
Well Description: GM 531-27	Job Type: SURFACE	ADC Used: YES
Company Rep: W.C. WILSON	Cement Supervisor: JAMES LEIST	Elite #:9 PAUL SALAZAR

HALLIBURTON
OptiCem v6.3.4
06-Sep-10 02:45