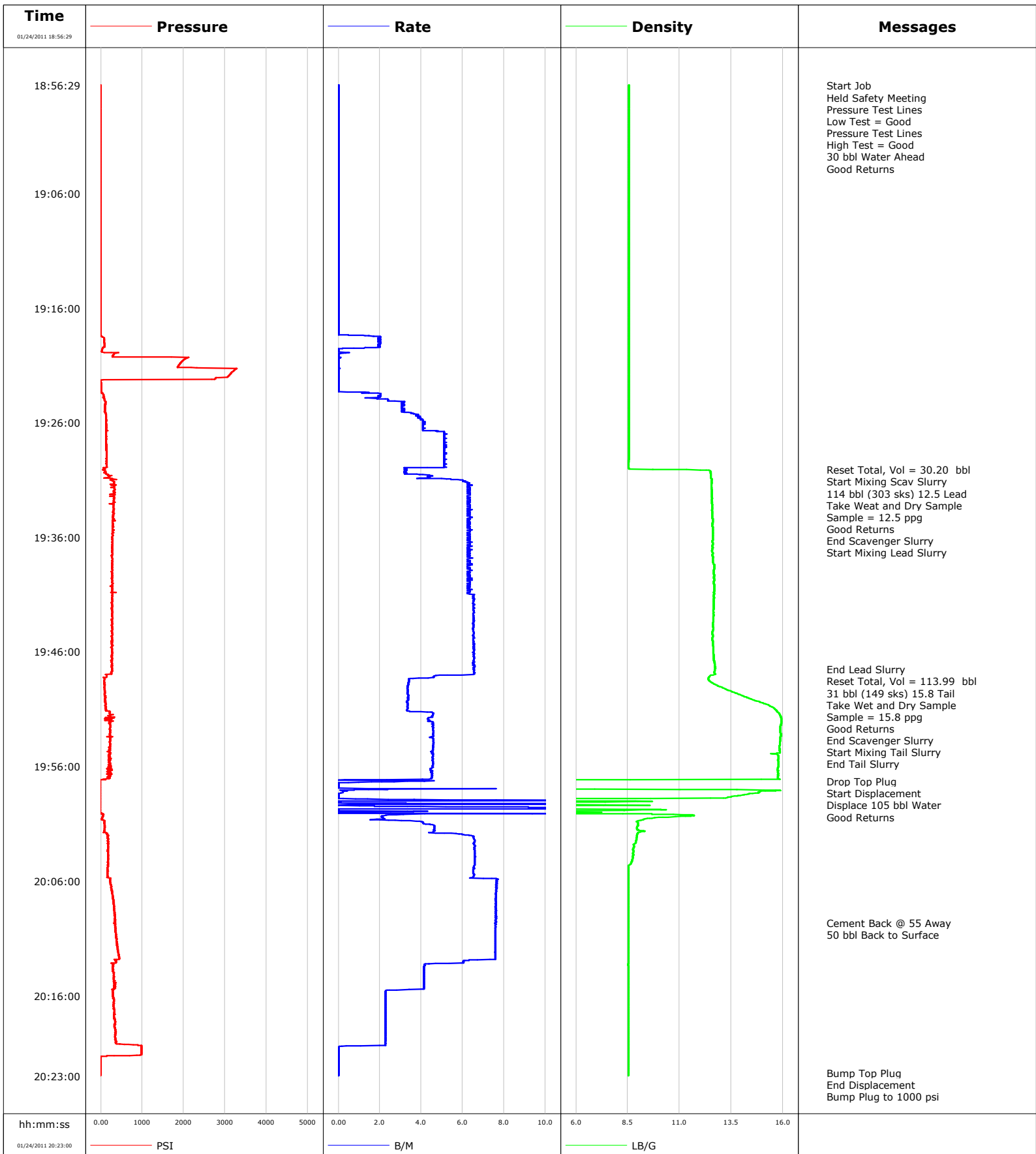


Well	Benjamin Fee 33-1B	Client	Encana
Field	Mamm Creek	SIR No.	
Engineer	Tom Leduc	Job Type	9 5/8" Surface
Country	United States	Job Date	01-24-2011



Cementing Service Report

Customer Encana				Job Number 471056							
Well Benjamin Fee 33-1B Benjamin Fee 33-1B			Location (legal) Garfield County			Schlumberger Location Grand Junction		Job Start Jan/24/2011			
Field Mamm Creek		Formation Name/Type Shale		Deviation 0 deg		Bit Size 12.3 in		Well MD 1407.0 ft		Well TVD 1407.0 ft	
County Garfield		State/Province Colorado		BHP		BHST 98 degF		BHCT 90 degF		Pore Press. Gradient	
Well Master 0631233164		API/UWI									
Rig Name M15	Drilled For Gas		Service Via Land		Casing/Liner						
	Depth, ft	Size, in	Weight, lb/ft	Grade	Thread						
Offshore Zone	Well Class New		Well Type Development		1407.0	9.630	36.0	H40	8rd		
	0.0	0.000	0.0								
Drilling Fluid Type Bentonite		Max. Density 9.50 lb/gal		Plastic Viscosity 10.000 cP		Tubing/Drill Pipe					
	Depth,	Size,	Weight,	Grade	Thread						
Service Line Cementing	Job Type 9 5/8" Surface										
Max. Allowed Tub. Press 650 psi	Max. Allowed Ann. Press 500 psi		WH Connection Single Cement head		Perforations/Open Hole						
	Top,	Bottom,		No. of Shots	Total Interval						
Service Instructions 9 5/8" Surface Casing										Diameter	
Treat Down Casing		Displacement 105.0 bbl		Packer Type		Packer Depth					
Tubing Vol.		Casing Vol. 106.0 bbl		Annular Vol. 82.0 bbl		Openhole Vol. 194.0 bbl					
Casing/Tubing Secured <input checked="" type="checkbox"/>		1 Hole Vol. Circulated prior to Cement <input checked="" type="checkbox"/>		Casing Tools				Squeeze Job			
Lift Pressure 697 psi		Shoe Type Float		Squeeze Type							
Pipe Rotated <input type="checkbox"/>		Pipe Reciprocated <input type="checkbox"/>		Shoe Depth 1405.0 ft		Tool Type					
No. Centralizers		Top Plugs		Bottom Plugs		Stage Tool Type		Tool Depth			
Cement Head Type Single		Stage Tool Depth		Tail Pipe Size							
Job Scheduled For Jan/24/2011 15:00		Arrived on Location Jan/24/2011 15:00		Leave Location Jan/24/2011 21:00		Collar Type Float		Tail Pipe Depth			
						Collar Depth 1363.0 ft		Sqz. Total Vol.			
Date	Time 24-hr clock	Treating Pressure PSI	Flow Rate B/M	Density LB/G	Volume BBL	Message					
01/24/2011	16:45:42					Pump 9 5/8" Surface @ 1407'					
01/24/2011	16:45:42					30 bbl Water Ahead					
01/24/2011	16:45:42					114 bbl (303 sks) 12.5 Lead					
01/24/2011	16:45:42					31 bbl (149 sks) 15.8 Tail					
01/24/2011	16:45:43					Displace 105 bbl Water					
01/24/2011	18:56:29	-4	0.0	8.56	0.0						
01/24/2011	18:56:32					Start Job					
01/24/2011	18:56:32	-5	0.0	8.56	0.0						
01/24/2011	18:56:33					Held Safety Meeting					
01/24/2011	18:56:33	-4	0.0	8.56	0.0						
01/24/2011	18:56:35					Pressure Test Lines					
01/24/2011	18:56:35	-5	0.0	8.56	0.0						
01/24/2011	18:56:36					Low Test = Good					
01/24/2011	18:56:36	-5	0.0	8.56	0.0						
01/24/2011	18:56:38					Pressure Test Lines					
01/24/2011	18:56:38	-4	0.0	8.56	0.0						
01/24/2011	18:56:39					High Test = Good					
01/24/2011	18:56:39	-4	0.0	8.56	0.0						
01/24/2011	18:56:42					30 bbl Water Ahead					
01/24/2011	18:56:42					Good Returns					
01/24/2011	18:56:42	-4	0.0	8.56	0.0						

Well		Field		Job Start		Customer		Job Number	
Benjamin Fee 33-1B Benjamin Fee 33-1B		Mamm Creek		Jan/24/2011		Encana		471056	
Date	Time 24-hr clock	Treating Pressure PSI	Flow Rate B/M	Density LB/G	Volume BBL	Message			
01/24/2011	19:00:42	-5	0.0	8.56	0.0				
01/24/2011	19:03:12	-5	0.0	8.56	0.0				
01/24/2011	19:05:42	-5	0.0	8.56	0.0				
01/24/2011	19:08:12	-5	0.0	8.56	0.0				
01/24/2011	19:10:42	-4	0.0	8.56	0.0				
01/24/2011	19:13:12	-4	0.0	8.56	0.0				
01/24/2011	19:15:42	-8	0.0	8.56	0.0				
01/24/2011	19:18:12	-8	0.0	8.56	0.0				
01/24/2011	19:20:42	1944	0.0	8.56	2.2				
01/24/2011	19:23:12	1	0.0	8.56	2.2				
01/24/2011	19:25:42	126	4.0	8.56	9.2				
01/24/2011	19:28:12	135	5.1	8.56	20.9				
01/24/2011	19:30:04					Reset Total, Vol = 30.20 bbl			
01/24/2011	19:30:04	52	3.2	9.70	30.2				
01/24/2011	19:30:06					Start Mixing Scav Slurry			
01/24/2011	19:30:06	53	3.3	11.34	30.3				
01/24/2011	19:30:07					114 bbl (303 sks) 12.5 Lead			
01/24/2011	19:30:07					Take Weat and Dry Sample			
01/24/2011	19:30:07					Sample = 12.5 ppg			
01/24/2011	19:30:07					Good Returns			
01/24/2011	19:30:07	53	3.3	12.00	30.4				
01/24/2011	19:30:42					End Scavenger Slurry			
01/24/2011	19:30:42	201	4.3	12.51	32.5				
01/24/2011	19:30:43					Start Mixing Lead Slurry			
01/24/2011	19:30:43	192	4.3	12.51	32.6				
01/24/2011	19:33:12	306	6.4	12.58	47.8				
01/24/2011	19:35:42	274	6.4	12.60	63.5				
01/24/2011	19:38:12	270	6.4	12.62	79.3				
01/24/2011	19:40:42	270	6.4	12.68	95.1				
01/24/2011	19:43:12	266	6.5	12.63	111.4				
01/24/2011	19:45:42	273	6.5	12.63	127.7				
01/24/2011	19:47:31					End Lead Slurry			
01/24/2011	19:47:31	274	6.5	12.71	139.6				
01/24/2011	19:48:12	143	4.6	12.42	143.7				
01/24/2011	19:48:19					Reset Total, Vol = 113.99 bbl			
01/24/2011	19:48:19	85	3.6	12.39	144.2				
01/24/2011	19:48:20					31 bbl (149 sks) 15.8 Tail			
01/24/2011	19:48:20	88	3.5	12.39	144.2				
01/24/2011	19:48:21					Take Wet and Dry Sample			
01/24/2011	19:48:21					Sample = 15.8 ppg			
01/24/2011	19:48:21					Good Returns			
01/24/2011	19:48:21	89	3.4	12.39	144.3				
01/24/2011	19:50:42	114	3.4	15.35	152.2				
01/24/2011	19:50:59					End Scavenger Slurry			
01/24/2011	19:50:59	114	3.3	15.61	153.2				
01/24/2011	19:51:00					Start Mixing Tail Slurry			
01/24/2011	19:51:00	132	3.3	15.62	153.2				
01/24/2011	19:53:12	220	4.6	15.89	162.9				
01/24/2011	19:55:05					End Tail Slurry			
01/24/2011	19:55:05	216	4.6	15.77	171.5				
01/24/2011	19:55:42	235	4.6	15.77	174.3				
01/24/2011	19:57:17					Drop Top Plug			
01/24/2011	19:57:17	-12	4.2	1.05	181.1				
01/24/2011	19:57:21					Start Displacement			

Well		Field		Job Start		Customer		Job Number	
Benjamin Fee 33-1B Benjamin Fee 33-1B		Mamm Creek		Jan/24/2011		Encana		471056	
Date	Time 24-hr clock	Treating Pressure PSI	Flow Rate B/M	Density LB/G	Volume BBL	Message			
01/24/2011	19:57:22					Displace 105 bbl Water			
01/24/2011	19:57:22	-14	1.0	0.32	181.3				
01/24/2011	19:57:23					Good Returns			
01/24/2011	19:57:23	-14	1.0	0.28	181.3				
01/24/2011	19:58:12	-15	0.2	14.84	181.8				
01/24/2011	20:00:42	73	2.7	9.12	191.5				
01/24/2011	20:03:12	173	6.6	8.76	205.4				
01/24/2011	20:05:42	145	6.5	8.53	221.8				
01/24/2011	20:08:12	314	7.6	8.53	240.7				
01/24/2011	20:09:40					Cement Back @ 55 Away			
01/24/2011	20:09:40					50 bbl Back to Surface			
01/24/2011	20:09:40	319	7.6	8.53	251.9				
01/24/2011	20:10:42	369	7.6	8.53	259.7				
01/24/2011	20:13:12	309	4.7	8.53	278.2				
01/24/2011	20:15:42	287	2.3	8.53	288.2				
01/24/2011	20:18:12	338	2.3	8.53	293.8				
01/24/2011	20:20:42	983	0.0	8.54	298.8				
01/24/2011	20:22:43					Bump Top Plug			
01/24/2011	20:22:43	-9	0.0	8.54	298.8				
01/24/2011	20:22:45					End Displacement			
01/24/2011	20:22:45	-10	0.0	8.54	298.8				
01/24/2011	20:22:47					Bump Plug to 1000 psi			
01/24/2011	20:22:47					Bled Pressure			
01/24/2011	20:22:47					0.5 bbl Back			
01/24/2011	20:22:47	-10	0.0	8.54	298.8				
01/24/2011	20:22:56					End Job			

Post Job Summary

Average Pump Rates, bbl/min				Volume of Fluid Injected, bbl			
Slurry	N2	Mud	Maximum Rate	Total Slurry	Mud	Spacer	N2
5.2		0.0	25.0	298.8	0.0	32.5	
Treating Pressure Summary, psi				Breakdown Fluid			
Maximum	Final	Average	Bump Plug to	Breakdown	Type	Volume	Density
3283	1000	318	800		FreshWater	320.0 bbl	8.34 lb/gal
Avg. N2 Percent	Designed Slurry Volume	Displacement	Mix Water Temp	Cement Circulated to Surface?	<input checked="" type="checkbox"/>	Volume	
	145.0 bbl	117.7 bbl	90 degF	Washed Thru Perfs	<input type="checkbox"/>	To	
Customer or Authorized Representative	Schlumberger Supervisor			Circulation Lost	<input type="checkbox"/>	Job Completed	<input checked="" type="checkbox"/>
Tim Phillips	Tom Leduc			-		-	