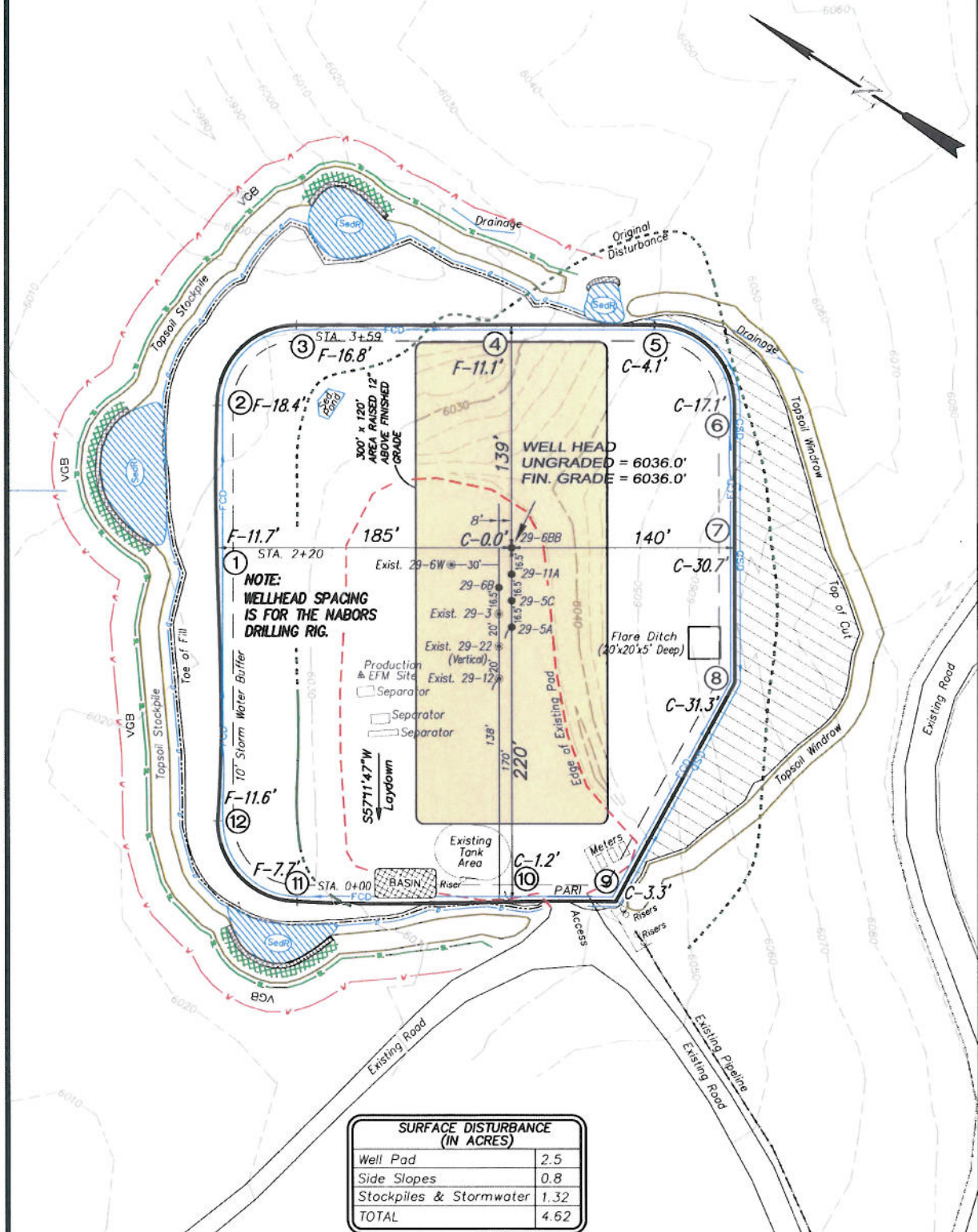


Encana Oil & Gas (USA) Inc.

PF-29 Well Pad

SE1/4 NW1/4, SECTION 29, T7S, R95W, 6th P.M.
WELL PAD LAYOUT



Total Surface Disturbance = 4.62 Acres
(See Sheet 4 for Details)

- NOTES:**
- (1) Slope Track and/or Terrace at Slopes and Piles
 - (2) Erosion Control & Seed Topsoil
 - (3) Erosion Control & Seed Outside
 - (4) Slope away from Substructure Areas 1% to 3% to Flow Control

LEGEND

- SLASH
- ST = SEDIMENT TRAP
- SePR = SEDIMENT RESERVOIR
- R.O.D. = RUN-ON DIVERSION
- PERIMETER CONTROL (WATTLES)
- CSD = CUT SLOPE DIVERSION (BERM TOE OF CUT SLOPE)
- D = FILL DIVERSION TO SEDIMENT TRAP
- VGB = VEGETATION BUFFER (UNDISTURBED LAND INSIDE PC)
- FCD = FLOW CONTROL DITCH
- PARI = PAD/ACCESS ROAD INTERFACE
- LEVEL SPREADER
- TOE BERM (PLACED AT TOE OF ALL FILL SLOPES/STOCKPILES)
- TOPSOIL BERM
- SEED, ECB & FLEX
- SEED

60' 0' 60'
SCALE IN FEET



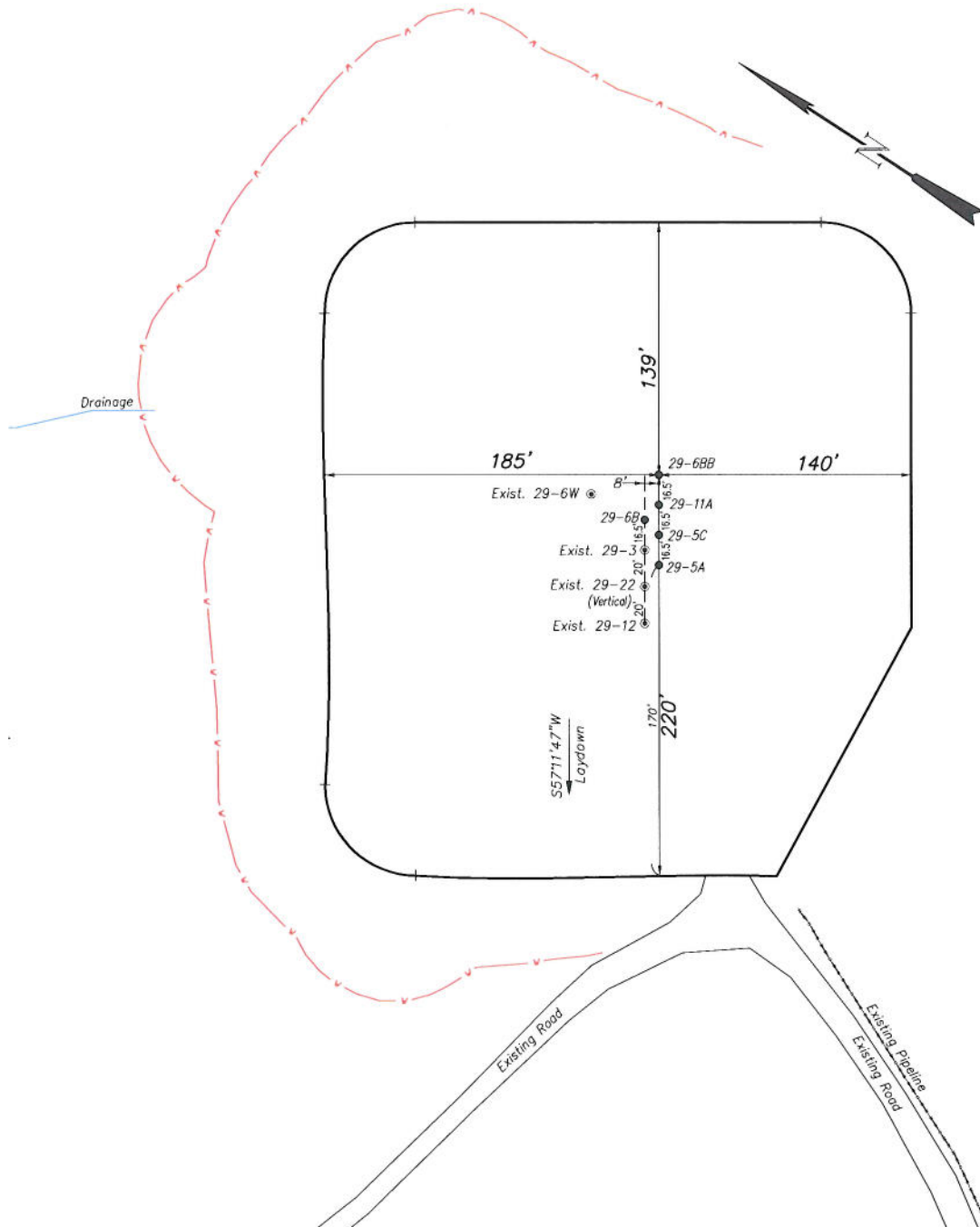
906 Main Street
Evanston, Wyoming 82930
Phone No. (307) 789-4545

Well Pad Layout		Scale: 1" = 60'	SHEET
Project No.	10-04-16	Date Surveyed: 6/08/10	3 OF 10
Date Drawn: 8/23/10		Latest Revision Date: 9/12/11	

Encana Oil & Gas (USA) Inc.

PF-29 Well Pad

SE1/4 NW1/4, SECTION 29, T7S, R95W, 6th P.M.
PRE-CONSTRUCTION PLAT



Total Surface Disturbance = 4.62 Acres
(See Sheet 4 for Details)

NOTES:

- (1) Slope Track and/or Terrace all Slopes and Piles
- (2) Erosion Control & Seed Topsoil
- (3) Erosion Control & Seed Outside
- (4) Slope away from Substructure Areas 1% to 3% to Flow Control

LEGEND

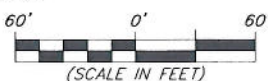
- SLASH
- ST = SEDIMENT TRAP
- SeePR = SEDIMENT RESERVOIR
- R.O.D. = RUN-ON DIVERSION
- PERIMETER CONTROL (WATTLES)
- CSD = CUT SLOPE DIVERSION (BERM TOE OF CUT SLOPE)
- D = FILL DIVERSION TO SEDIMENT TRAP
- VGB = VEGETATION BUFFER (UNDISTURBED LAND INSIDE PC)
- FCB = FLOW CONTROL DITCH
- PARI = PAD/ACCESS ROAD INTERFACE
- LEVEL SPREADER
- TOE BERM (PLACED AT TOE OF ALL FILL SLOPES/STOCKPILES)
- TOPSOIL, BERM
- SEED, ECB & FLEX
- SEED

PRE-CONSTRUCTION PHASE COMPLETE,
AUTHORIZATION TO CONTINUE
CONSTRUCTION.

SIGNATURE: _____

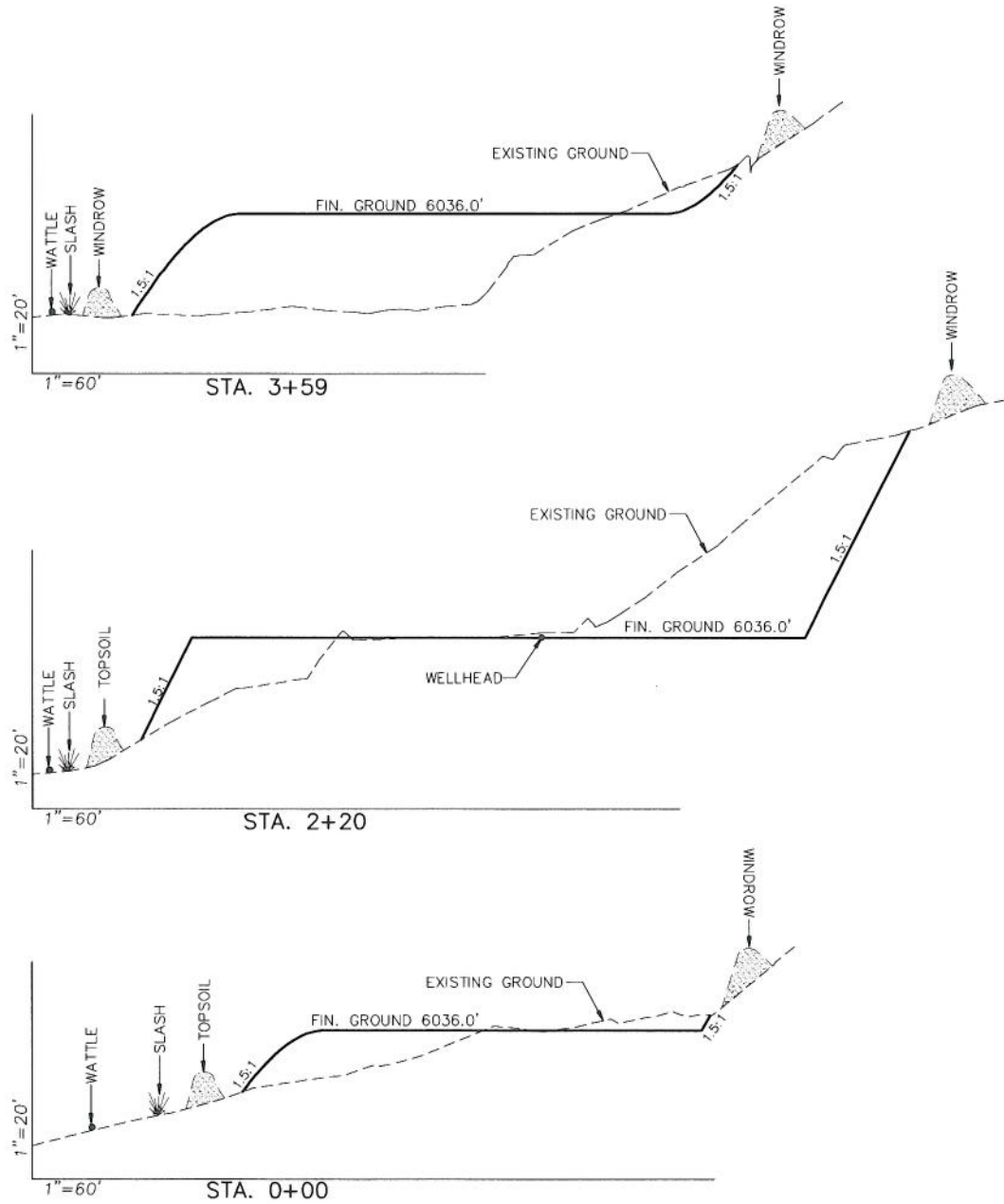


906 Main Street
Evanston, Wyoming 82930
Phone No. (307) 789-4545



Pre-Construction		Scale: 1" = 60'	SHEET 3a OF 10
Project No.	10-04-16	Date Surveyed: 6/08/10	
Date Drawn: 8/23/10		Latest Revision Date: 9/12/11	

Encana Oil & Gas (USA) Inc.
Well Pad (PF-29)
CROSS SECTIONS



SURFACE DISTURBANCE (IN ACRES)	
Well Pad	2.5
Side Slopes	0.8
Stockpiles & Stormwater	1.32
TOTAL	4.62

NOTE:
 ALL CUT AND FILL
 SLOPES ARE AT 1.5:1
 UNLESS OTHERWISE
 NOTED.

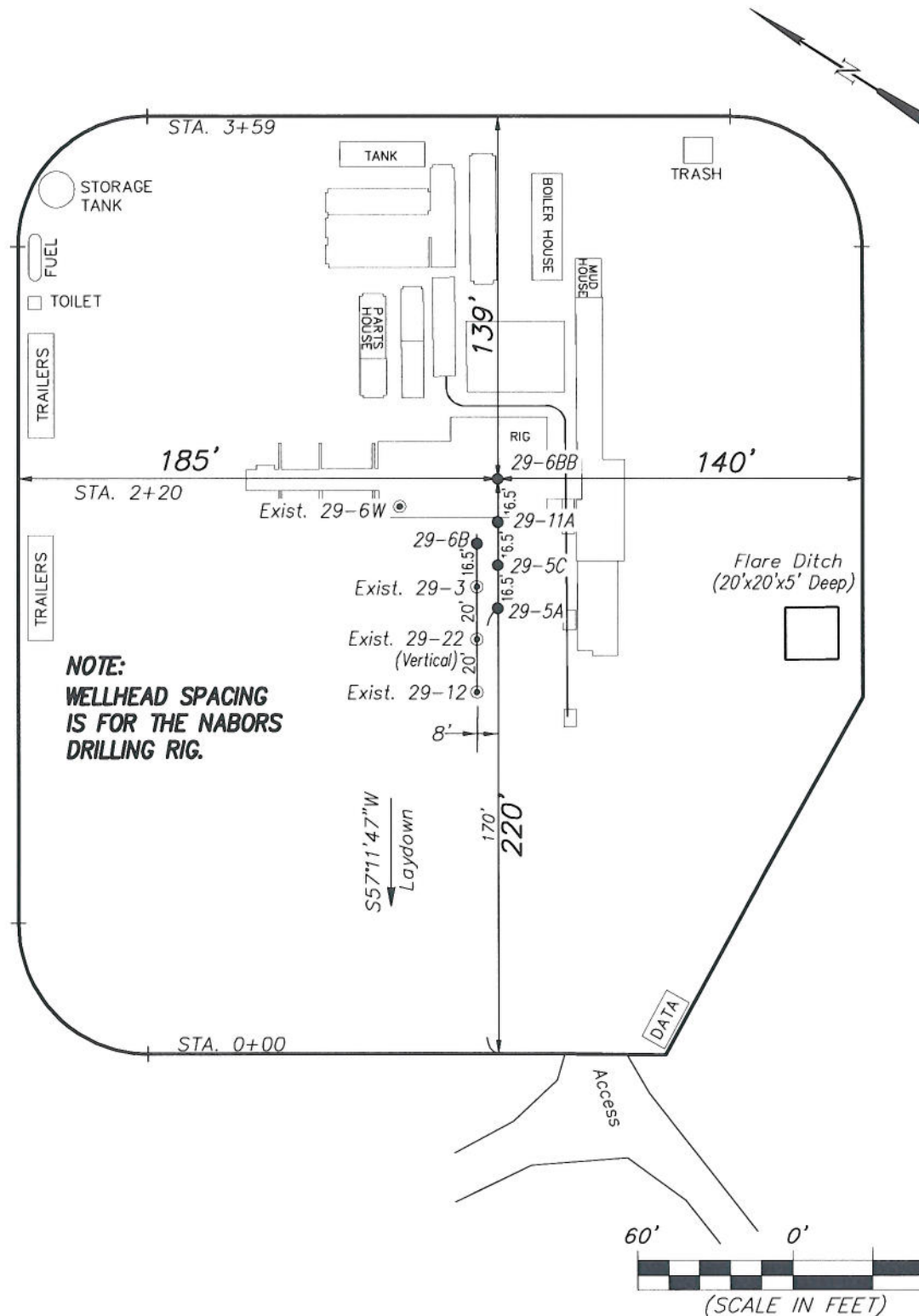
EARTHWORK QUANTITIES (in Cubic Yards w/ 0% shrink/swell)				
ITEM	CUT	FILL	6" TOPSOIL	EXCESS
PAD	20844	20068	Topsoil not included in Excavation	
PIT	0	0	Excavation	
TOTALS	20844	20068	3725	776



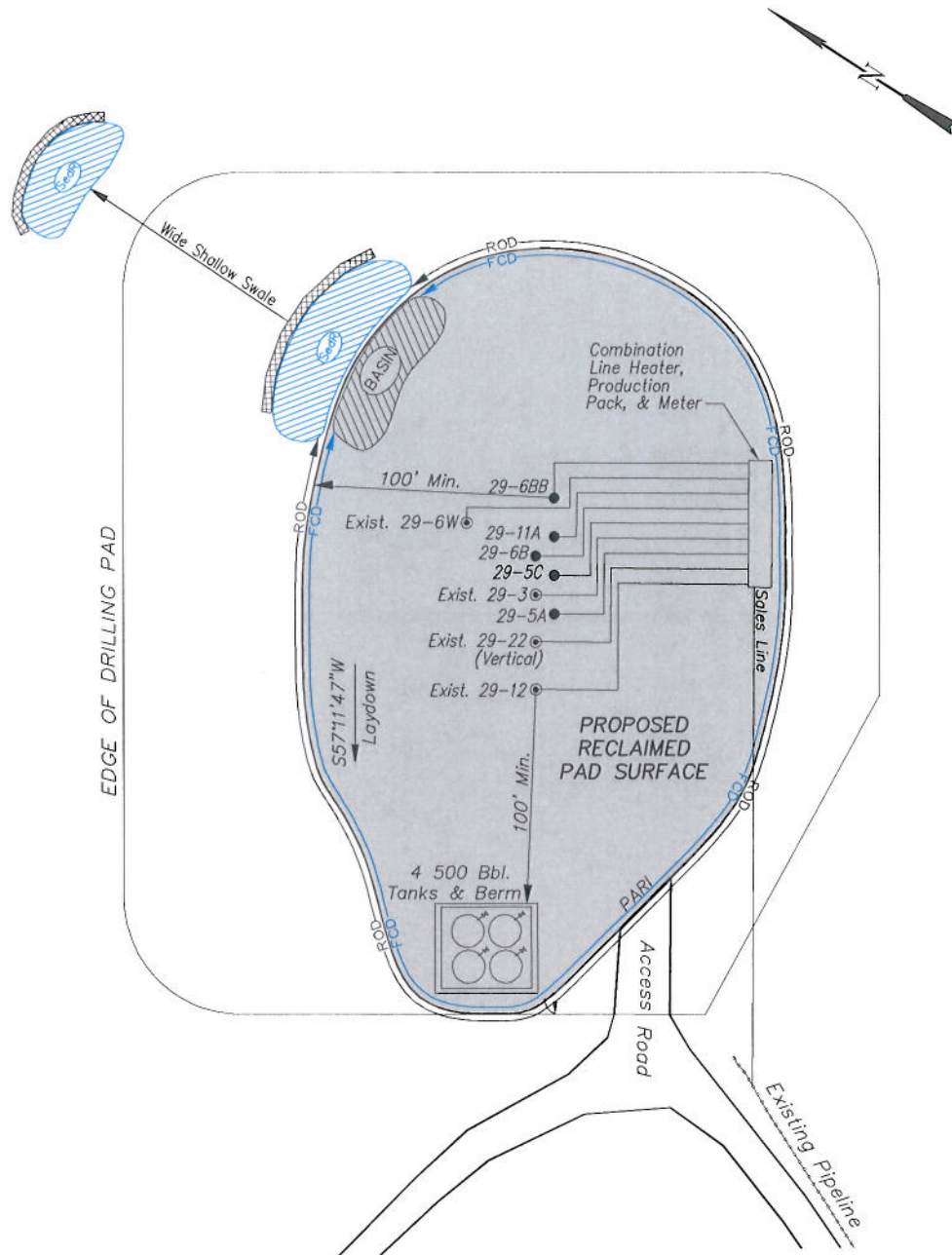
906 Main Street
 Evanston, Wyoming 82930
 Phone No. (307) 789-4545

Cross Sections		Scale: As Shown		SHEET	
Project No.	10-04-16	Date Surveyed:	6/08/10	4	
Date Drawn:	8/23/10	Latest Revision Date:	9/12/11		
				OF 10	

Encana Oil & Gas (USA) Inc.
Well Pad (PF-29)
TYPICAL RIG LAYOUT



Encana Oil & Gas (USA) Inc.
PF-29 Well Pad
PRODUCTION SCHEMATIC



NOTES:

1. Set Tanks High so pad Entrance & Tank Area Can Drain to Pad Basin
2. Gravel Pad 75' from Wells & Around Tanks and Separators
3. Pad Drains to Pad Basin at a 3% to 5% slope
4. BMP Selection and Position may change Depending on Actual Conditions Encountered During the Construction Process

NOTE:

Actual Equipment Layout and Reclaimed Pad Surface Area May Change due to Production Requirements or Site Conditions.

ESTIMATED AREAS

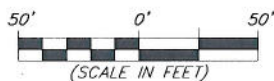
RECLAIMED AREA: 3.4 ACRES
 UNRECLAIMED AREA: 1.22 ACRES
 (PRODUCTION PAD)

LEGEND

- SLASH = SLASH
- ST = SEDIMENT TRAP
- SedR = SEDIMENT RESERVOIR
- R.O.D. = RUN-ON DIVERSION
- W = PERIMETER CONTROL (WATTLES)
- CSD = CUT SLOPE DIVERSION (BERM TOE OF CUT SLOPE)
- D = FILL DIVERSION TO SEDIMENT TRAP
- VBG = VEGETATION BUFFER (UNDISTURBED LAND INSIDE PC)
- FCD = FLOW CONTROL DITCH
- PARI = PAD/ACCESS ROAD INTERFACE
- LEVEL SPREADER
- TOE BERM (PLACED AT TOE OF ALL FILL SLOPES/STOCKPILES)
- TOPSOIL BERM
- SEED, ECB & FLEX
- SEED

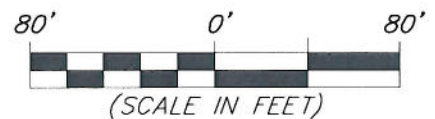


906 Main Street
 Evanston, Wyoming 82930
 Phone No. (307) 789-4545



Production Schematic		Scale: 1" = 50'	SHEET
Project No.	10-04-16	Date Surveyed: 6/08/10	6
Date Drawn: 8/23/10	Latest Revision Date: 9/12/11		OF 10

SURFACE DISTURBANCE AREA



OF 10

906 Main Street
Evanston, Wyoming 82930
Phone No. (307) 789-4545

