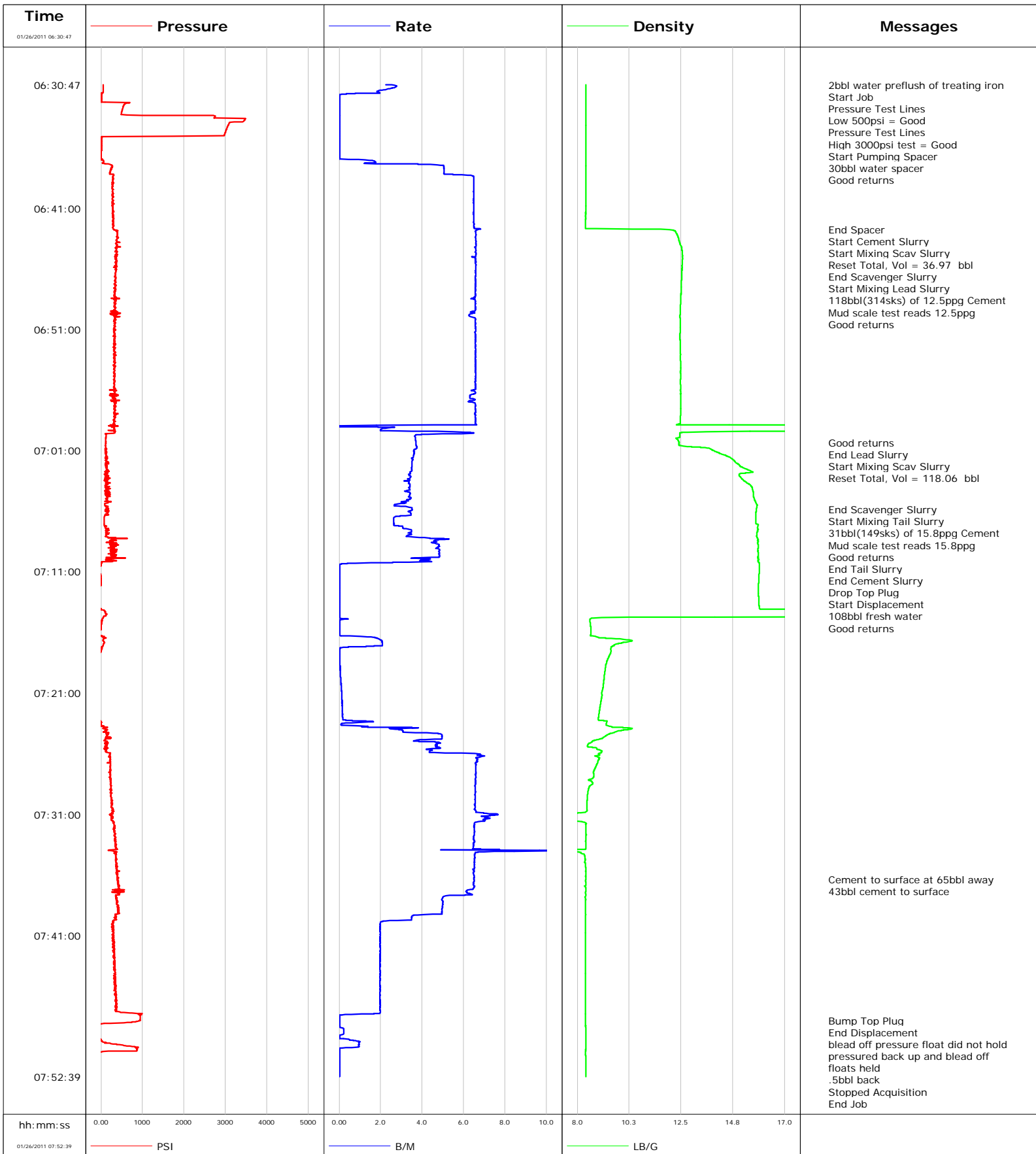


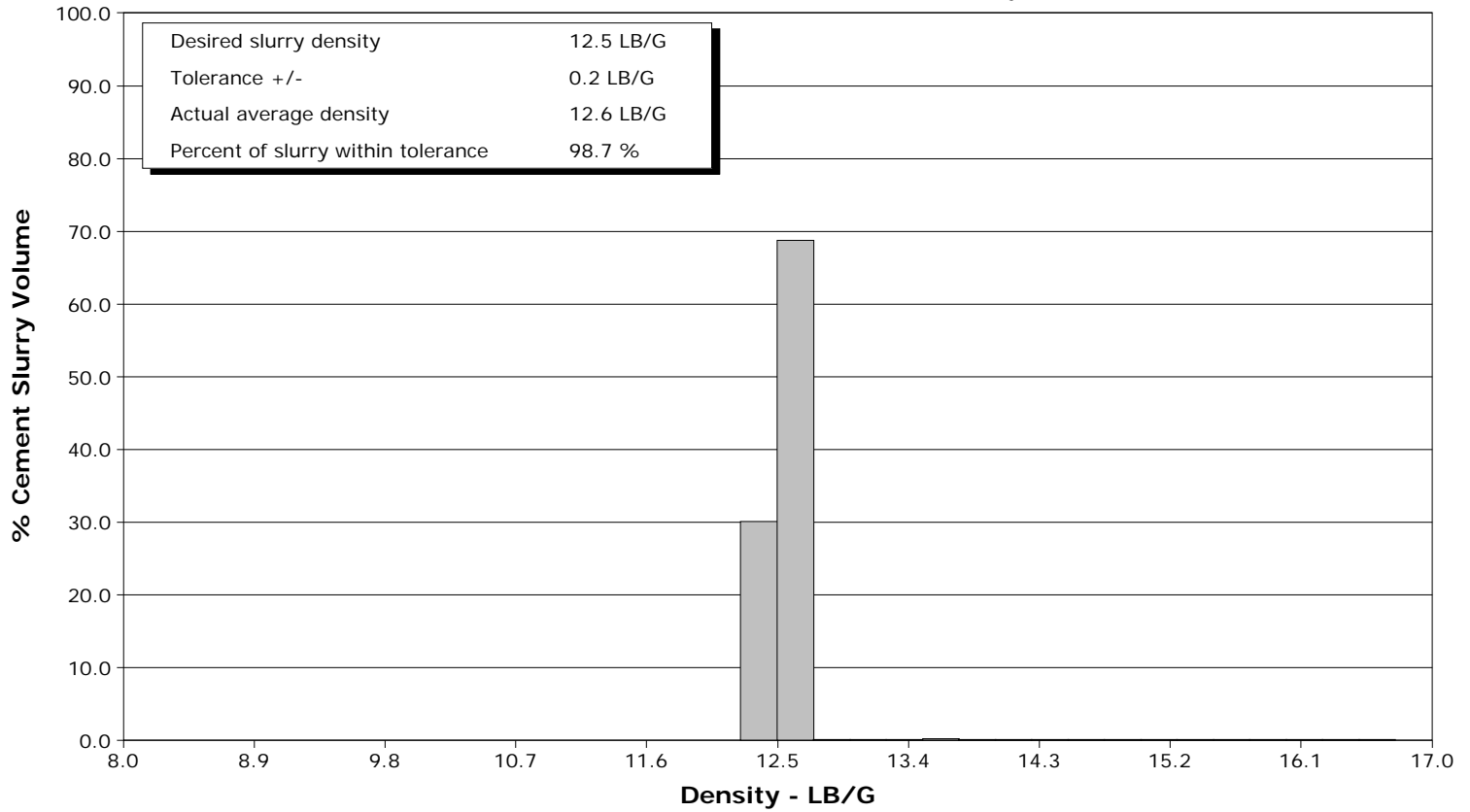
Well	Benjamin Federal 33 4B	Client	Encana Oil Gas
Field	Mamm Creek	SIR No.	000471057
Engineer	Dustin C Krueger	Job Type	9 5/8 1440ft Surface
Country	United States	Job Date	01-26-2011



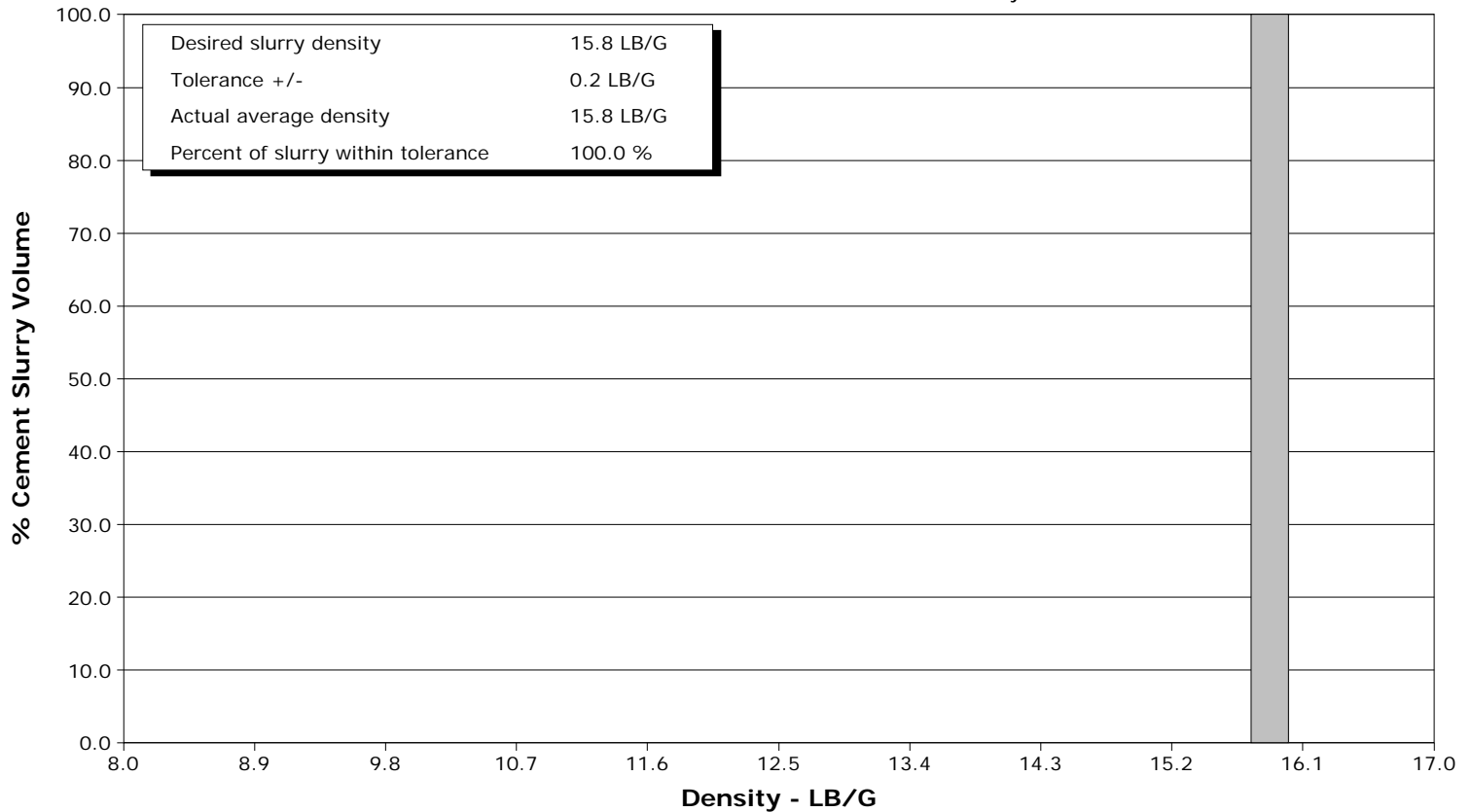
Well Benjamin Federal 33 4B
Field Mamm Creek
Engineer Dustin C Krueger
Country United States

Client Encana Oil Gas
SIR No. 000471057
Job Type 9 5/8 1440ft Surface
Job Date 01-26-2011

Lead Slurry - 01/26/2011 06:44:17 to 01/26/2011 07:00:22



Tail Slurry - 01/26/2011 07:05:53 to 01/26/2011 07:05:59



Well		Field		Job Start	Customer		Job Number
Benjamin Federal 33 4B Benjamin Federal 33 4B		Mamm Creek		Jan/26/2011	Encana Oil & Gas		000471057
Date	Time 24-hr clock	Treating Pressure PSI	Flow Rate B/M	Density LB/G	Volume BBL	Message	
01/26/2011	06:35:42	3	0.0	8.37	1.7		
01/26/2011	06:38:12	306	5.5	8.37	6.6		
01/26/2011	06:40:42	280	6.5	8.37	22.8		
01/26/2011	06:42:43					End Spacer	
01/26/2011	06:42:43	294	6.8	10.39	35.9		
01/26/2011	06:42:45					Start Cement Slurry	
01/26/2011	06:42:45	328	6.7	12.00	36.1		
01/26/2011	06:42:47					Start Mixing Scav Slurry	
01/26/2011	06:42:47	319	6.6	12.13	36.3		
01/26/2011	06:42:53					Reset Total, Vol = 36.97 bbl	
01/26/2011	06:42:53	366	6.6	12.25	37.0		
01/26/2011	06:43:12	398	6.6	12.34	39.1		
01/26/2011	06:44:16					End Scavenger Slurry	
01/26/2011	06:44:16	340	6.6	12.52	46.1		
01/26/2011	06:44:17					Start Mixing Lead Slurry	
01/26/2011	06:44:17	340	6.6	12.53	46.2		
01/26/2011	06:44:27					118bbl(314sks) of 12.5ppg Cement	
01/26/2011	06:44:27	362	6.6	12.54	47.3		
01/26/2011	06:44:28					Mud scale test reads 12.5ppg	
01/26/2011	06:44:28					Good returns	
01/26/2011	06:44:28	358	6.6	12.54	47.4		
01/26/2011	06:45:42	354	6.6	12.55	55.5		
01/26/2011	06:48:12	336	6.6	12.50	71.9		
01/26/2011	06:53:12	335	6.6	12.47	104.6		
01/26/2011	06:55:42	310	6.6	12.48	121.1		
01/26/2011	06:58:12	335	6.6	12.47	137.3		
01/26/2011	07:00:21					Good returns	
01/26/2011	07:00:21	116	3.7	12.42	146.7		
01/26/2011	07:00:22					End Lead Slurry	
01/26/2011	07:00:22	124	3.7	12.41	146.7		
01/26/2011	07:00:23					Start Mixing Scav Slurry	
01/26/2011	07:00:23	118	3.7	12.41	146.8		
01/26/2011	07:00:42	109	3.7	13.16	148.0		
01/26/2011	07:02:41					Reset Total, Vol = 118.06 bbl	
01/26/2011	07:02:41	121	3.5	15.53	155.0		
01/26/2011	07:03:12	99	3.4	15.08	156.8		
01/26/2011	07:05:42	162	3.4	15.79	165.0		
01/26/2011	07:05:50					End Scavenger Slurry	
01/26/2011	07:05:50	148	3.5	15.77	165.5		
01/26/2011	07:05:53					Start Mixing Tail Slurry	
01/26/2011	07:05:53	170	3.5	15.77	165.7		
01/26/2011	07:05:57					31bbl(149sks) of 15.8ppg Cement	
01/26/2011	07:05:57	97	3.5	15.76	165.9		
01/26/2011	07:05:58					Mud scale test reads 15.8ppg	
01/26/2011	07:05:58					Good returns	
01/26/2011	07:05:58	97	3.4	15.76	166.0		
01/26/2011	07:05:59					End Tail Slurry	
01/26/2011	07:05:59	195	3.4	15.76	166.0		
01/26/2011	07:06:00					End Cement Slurry	
01/26/2011	07:06:00	98	3.4	15.76	166.1		
01/26/2011	07:08:12	178	4.3	15.81	172.9		
01/26/2011	07:10:15					Drop Top Plug	
01/26/2011	07:10:15	5	1.5	15.90	182.3		
01/26/2011	07:10:20					Start Displacement	

Well		Field		Job Start		Customer		Job Number	
Benjamin Federal 33 4B Benjamin Federal 33 4B		Mamm Creek		Jan/26/2011		Encana Oil & Gas		000471057	
Date	Time 24-hr clock	Treating Pressure PSI	Flow Rate B/M	Density LB/G	Volume BBL	Message			
01/26/2011	07:10:23					108bbl fresh water			
01/26/2011	07:10:23					Good returns			
01/26/2011	07:10:23	-4	0.0	15.90	182.4				
01/26/2011	07:10:42	-15	0.0	15.90	182.4				
01/26/2011	07:13:12	-21	0.0	15.87	182.4				
01/26/2011	07:15:42	-11	0.0	8.59	182.4				
01/26/2011	07:18:12	-23	0.0	9.32	184.1				
01/26/2011	07:20:42	-27	0.1	9.10	184.2				
01/26/2011	07:23:12	-26	0.2	8.91	184.6				
01/26/2011	07:25:42	114	4.5	8.96	193.0				
01/26/2011	07:28:12	225	6.6	8.52	209.0				
01/26/2011	07:30:42	283	6.6	8.44	225.4				
01/26/2011	07:33:12	357	6.5	8.37	242.2				
01/26/2011	07:35:42	451	6.5	8.36	258.9				
01/26/2011	07:36:24					Cement to surface at 65bbl away			
01/26/2011	07:36:24					43bbl cement to surface			
01/26/2011	07:36:24	391	6.5	8.37	263.4				
01/26/2011	07:38:12	379	5.0	8.35	274.2				
01/26/2011	07:40:42	302	2.0	8.36	283.2				
01/26/2011	07:43:12	317	2.0	8.36	288.1				
01/26/2011	07:45:42	351	2.0	8.36	293.0				
01/26/2011	07:48:01					Bump Top Plug			
01/26/2011	07:48:01	941	0.0	8.36	296.6				
01/26/2011	07:48:02					End Displacement			
01/26/2011	07:48:02	932	0.0	8.36	296.6				
01/26/2011	07:48:05					blead off pressure float did not hold			
01/26/2011	07:48:05					pressured back up and bleed off			
01/26/2011	07:48:05	882	0.0	8.36	296.6				
01/26/2011	07:48:12	638	0.0	8.36	296.6				
01/26/2011	07:49:16					floats held			
01/26/2011	07:49:16	-31	0.0	8.37	296.7				
01/26/2011	07:49:17					.5bbl back			
01/26/2011	07:49:17	-31	0.0	8.37	296.7				
01/26/2011	07:50:42	-21	0.0	8.36	297.3				
01/26/2011	07:52:40					Stopped Acquisition			

Post Job Summary

Average Pump Rates, bbl/min				Volume of Fluid Injected, bbl			
Slurry	N2	Mud	Maximum Rate	Total Slurry	Mud	Spacer	N2
4.1		0.0	8.1	149.0	0.0	20.0	
Treating Pressure Summary, psi				Breakdown Fluid			
Maximum	Final	Average	Bump Plug to	Breakdown	Type	Volume	Density
3000	380	150	1396		FreshWater	318.0 bbl	8.34 lb/gal
Avg. N2 Percent	Designed Slurry Volume	Displacement	Mix Water Temp	Cement Circulated to Surface?	<input checked="" type="checkbox"/>	Volume	43.0 bbl
	149.0 bbl	107.9 bbl	70 degF	Washed Thru Perfs	<input type="checkbox"/>	To	
Customer or Authorized Representative			Schlumberger Supervisor			Circulation Lost	<input type="checkbox"/>
Tim Phillips			Dustin C Krueger			-	Job Completed <input checked="" type="checkbox"/>
						-	