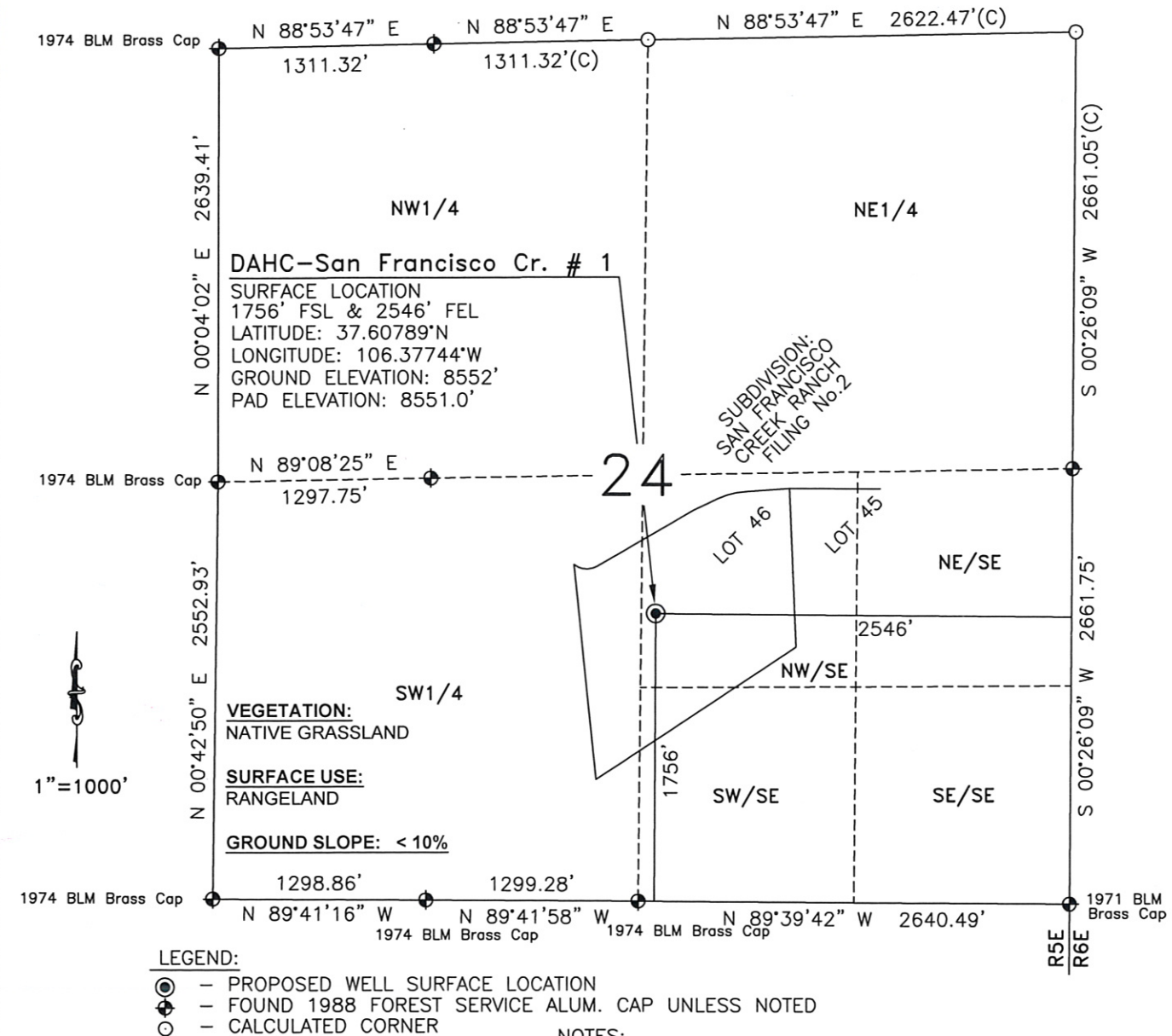


WELL LOCATION MAP

DAHC-San Francisco Cr.#1



I, JASON D. LEVANEN, A DULY REGISTERED LAND SURVEYOR IN THE STATE OF COLORADO, DO HEREBY CERTIFY THAT THIS PLAT WAS PREPARED FROM NOTES TAKEN DURING A SURVEY PERFORMED BY ME OR UNDER MY SUPERVISION ON MAY 05, 2010.



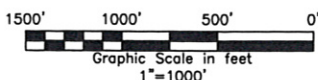
NOTES:

- 1) Horizontal and vertical coordinates based from NGS CORS stations "AZCN", "P036" and "P037" derived from GPS data.
- 2) Basis of bearings are Colorado State Plane south zone. Distances are ground NAD 83, NAVD 88. PAF: 1.000457
- 3) All section line dimensions shown hereon are based on field measurements of existing monuments and/or physical evidence found in the field unless otherwise indicated. refer to land survey plats deposited in Rio Grande County
- 4) Physical features shown hereon are for graphical representation only.
- 5) See form 2A for visible improvements within 400' of the wellhead
- 6) Distances to nearest section lines are measured perpendicularly.
- 7) This is not a land survey nor land survey plat.
- 8) Date of survey 5/05/10; Date of Drawing 5/07/10. REV 0
 PDOP Reading 2.3 Instrument Operator Clayton Rosenlund

Dan A. Hughes Company, L.P.
 208 E. Houston Street
 Beeville, TX 78104

DAHC - San Francisco Cr. # 1

NW1/4SE1/4, S.24, T39N-R5E
 NEW MEXICO P.M. RIO GRANDE
 COUNTY, COLORADO



WESTERN LAND SERVICES

Sheridan, WY 82801 (307)673-1817

DP: L:\Drawings\Dan Hughes\Hughs.dwg

Date: 5-07-10