

## The Road to Excellence Starts with Safety

Sold To #: 344034	Ship To #: 2577182	Quote #:	Sales Order #: 6036289
Customer: OXY GRAND JUNCTION EBUSINESS	Customer Rep:		
Well Name: CC	Well #: 697-16-07A	API/UWI #:	
Field: PICEANCE	City (SAP): UNKNOWN	County/Parish: Garfield	State: Colorado

Job Purpose: Squeeze Perfs

Well Type: Development Well

Sales Person: HARTLEY, RICHARD

Job Type: Squeeze Perfs

Srvc Supervisor: LEIST, MICHAEL

Job # Group #: 244000

## Job Personnel

HES Emp Name	Exp Hrs	Emp #	HES Emp Name	Exp Hrs	Emp #	HES Emp Name	Exp Hrs	Emp #
JARDINE, JASON		332624	LEIST, MICHAEL		244053	MAYO, MARK Eaton		314204
Dale			William					
MOORE, ALEX		158427	STEMPKY, MICHAEL J		392967			
Vincent								

## Equipment

HES Unit #	Distance-1 way	HES Unit #	Distance-1 way	HES Unit #	Distance-1 way	HES Unit #	Distance-1 way
10248057	25 mile	10710776	25 mile	10857016	25 mile	10872113	25 mile

## Job Hours

Date	On Location Hours	Operating Hours	Date	On Location Hours	Operating Hours	Date	On Location Hours	Operating Hours

TOTAL

Total is the sum of each column separately

## JOB

Formation Name	Formation Depth (MD) [Top]	Bottom	Form Type	Job depth MD	Job Depth TVD	Water Depth	Perforation Depth (MD) [Top]	Bottom	Job Times	Date	Time	Time Zone
			BHSI	7900 ft	7900 ft				Called Out	17-Jul-2008	03:00	MST
									On Location	17-Jul-2008	07:00	MST
									Job Started	17-Jul-2008	10:26	MST
									Well Completion	17-Jul-2008	11:00	MST
									Prepared Log	17-Jul-2008	11:00	MST

## Well Data

Description	Flow Used	Index pressure	Size In	in	Weight lbm/ft	Target	Grade	Top MD ft	Bottom MD ft	Top TVD ft	Bottom TVD ft
Production Casing Peris	Unknown		4.5	4	11.6				7580		
Tubing	Unknown		2.375	1.995	4.0				7530		

## Tools and Accessories

Type	Size	Qty	Make	Depth	Type	Size	Qty	Make	Depth	Type	Size	Qty	Make
Guide Shoe					Packer					Top Plug			
Float Shoe					Bridge Plug					Bottom Plug			
Float Collar					Retainer					SSR plug set			
Insert Float										Plug Container			
Stage Tool										Centralizers			

## Miscellaneous Materials

Gelling Agt	Conc	Conc	Surfactant	Conc	Acid Type	Qty	Conc	%
Treatment Fld			Inhibitor		Sand Type	Size	Qty	

Fluid Data									
Stage/Plug #: 1									
Fluid #	Stage Type	Fluid Name	Qty	Qty uom	Mixing Density lbm/gal	Yield ft <sup>3</sup> /sk	Mix Fluid Gal/sk	Rate bbl/min	Total Mix Fluid Gal/sk
1	Injection Test		10.0	bbl	.	.0	.0	.0	
2	MUD FLUSH III	MUD FLUSH III - SBM (528788)	20.0	bbl	8.4	.0	.0	.0	
3	Fresh Water Spacer		10.0	bbl	8.33	.0	.0	.0	
4	Lead Cement	ELASTISEAL (TM) SYSTEM (450262)	300.0	sacks	13.1	1.57	7.21		
5	Tail Cement	ELASTISEAL (TM) SYSTEM (450262)	50.0	sacks	13.1	1.57	7.21		
6	Displacement			bbl	.	.0	.0	.0	
Calculated Values		Pressures		Volumes					
Displacement		Shut In: Instant		Lost Returns		Cement Slurry		Pad	
Top Of Cement		5 Min		Cement Returns		Actual Displacement		Treatment	
Frac Gradient		15 Min		Spacers		Load and Breakdown		Total Job	
Rates									
Circulating		Mixing		Displacement		Avg. Job			
Cement Left In Pipe		Amount	0 ft	Reason	Shoe Joint				
Frac Ring # 1 @	ID	Frac ring # 2 @	ID	Frac Ring # 3 @	ID	Frac Ring # 4 @	ID		
The Information Stated Herein Is Correct				Customer Representative Signature					

## The Road to Excellence Starts with Safety

Sold To #: 344034	Ship To #: 2577182	Quote #:	Sales Order #: 6036289
Customer: OXY GRAND JUNCTION EBUSINESS		Customer Rep:	
Well Name: CC	Well #: 697-16-07A	API/UWI #:	
Field: PICEANCE	City (SAP): UNKNOWN	County/Parish: Garfield	State: Colorado
Legal Description:			
Lat:		Long:	
Contractor:		Rig/Platform Name/Num: Workover	
Job Purpose: Squeeze Perfs		Ticket Amount:	
Well Type: Development Well		Job Type: Squeeze Perfs	
Sales Person: HARTLEY, RICHARD		Srv Supervisor: LEIST, MICHAEL	MBU ID Emp #: 244053

Activity Description	Date/Time	Cht #	Rate bbl/ min	Volume bbl		Pressure psig		Comments
				Stage	Total	Tubing	Casing	
Call Out	07/17/2008 03:00							
Depart Yard Safety Meeting	07/17/2008 05:00							
Arrive at Location from Service Center	07/17/2008 07:00							
Pre-Rig Up Safety Meeting	07/17/2008 07:10							
Rig-Up Equipment	07/17/2008 07:30							
Pre-Job Safety Meeting	07/17/2008 09:45							
Start Job	07/17/2008 10:26							
Test Lines	07/17/2008 10:27					5000. 0		
Injection Test	07/17/2008 10:59		2	16		1930. 0		ISIP @ 230 PSI
Pump Spacer 1	07/17/2008 11:11		1	20		2000. 0		SHUTDOWN WHEN WE BROUGHT ON NITROGEN DUE TO PRESSURE INCREASE ABOVE MAX.
Pump Spacer 2	07/17/2008 11:28		1	5		1835. 0		
Pump Lead Cement	07/17/2008 11:34		1	84		2002. 0		300 SKS 13.1# 1.57 YIELD FOAMED TO 9.0#
Pump Tail Cement	07/17/2008 12:46		1	18		1832. 0		50 SKS 13.1# 1.57 YIELD UNFOAMED

*Cementing Job Log*

Activity Description	Date/Time	Cht #	Rate bbl/ min	Volume bbl		Pressure psig		Comments
				Stage	Total	Tubing	Casing	
Pump Displacement	07/17/2008 13:02		1	29.25		868.0		PRESSURE INCREASED TO 1750 BEFORE SHUTTING DOWN, AFTER SHUTTING DOWN PRESSURE HELD AT 1400 PSI
Release Tool	07/17/2008 13:30							
Reverse Circ Well	07/17/2008 13:33		2	52		750.0		3 BBLS RETURNED TO PIT
Shutdown	07/17/2008 13:58							
End Job	07/17/2008 13:59							
Other	07/17/2008 14:02							OXY OK'ED BOBCAT 3RD PARTY NITROGEN
Other	07/17/2008 14:02					8000. 0		N2 TEST LINES
Other	07/17/2008 14:02					2600. 0		STAGE 1 471 SCFM
Other	07/17/2008 14:02					2100. 0		STAGE 2 312 SCFM
Other	07/17/2008 14:02					2400. 0		STAGE 3 464 SCFM
Other	07/17/2008 14:02					2800. 0		STAGE 4 519 SCFM
Other	07/17/2008 14:02					3000. 0		TAKE N2 OFFLINE 523 SCFM
Other	07/17/2008 14:02							THANKS FOR USING HALLIBURTON
Other	07/17/2008 14:02							--MIKE LEIST, JASON JARDINE AND CREW--

Sold To # : 344034

Ship To # :2577182

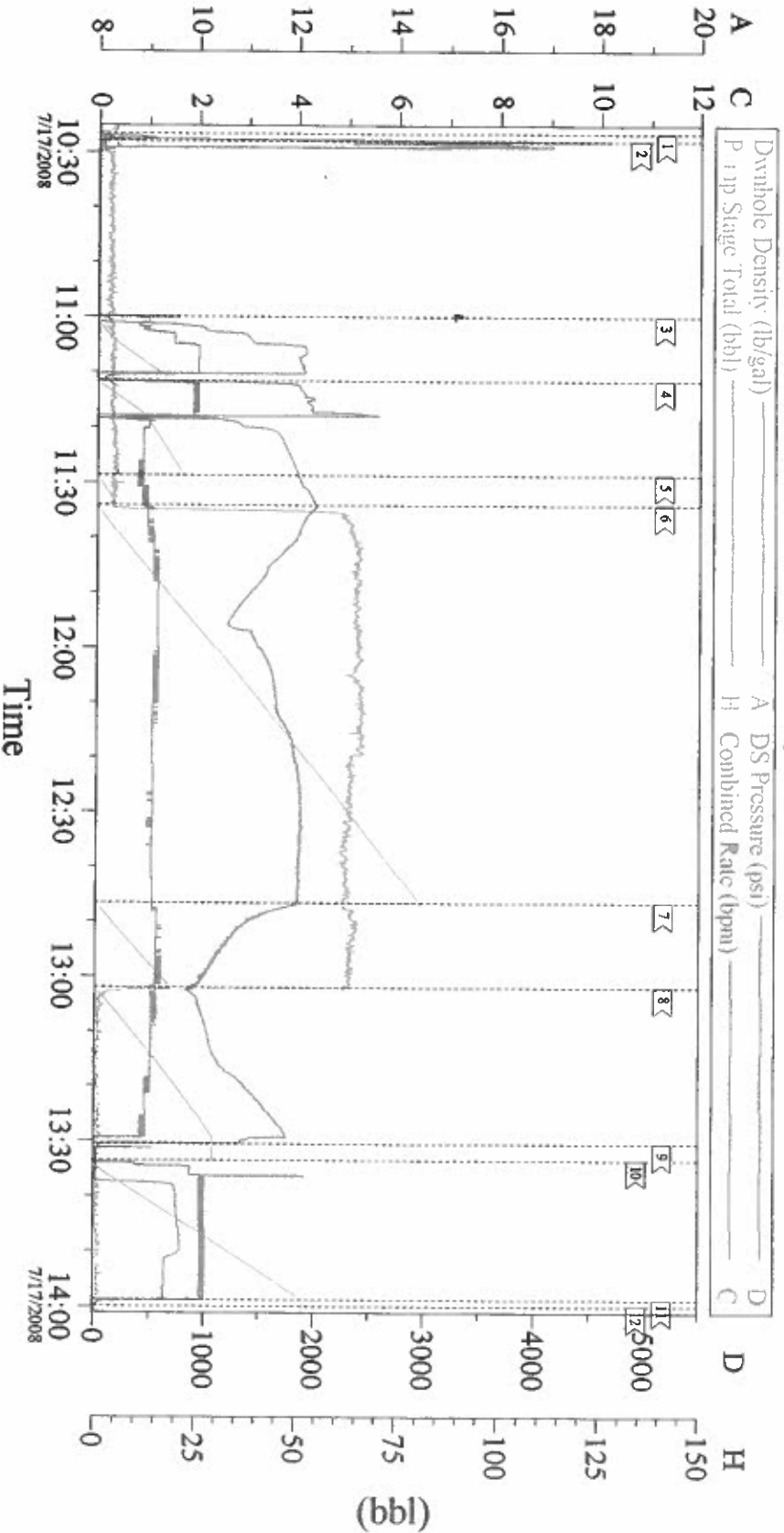
Quote # :

Sales Order # : 6036289

SUMMIT Version: 7.20.130

Thursday, July 17, 2008 02:34:00

# FOAM SQUEEZE



## Event Log

Intersection	DP	Intersection	DP	Intersection	DP
1 START JOB	102630 -10.00	2 TEST LINES	102756 -16.19	3 PUMP INJECTION TEST	105948 -20.68
4 PUMP MUDFLUSH SPACER	111133 -9.83	5 PUMP H2O SPACER	112834 1835	6 PUMP LEAD CEMENT	113404 2002
7 PUMP TAIL CEMENT	124635 1832	8 PUMP DISPLACEMENT	130202 868.0	9 SHUTDOWN STRING OUT OF RETAINER	133036 1721
10 REVERSE CIRCULATE WELL	133331 -26.00	11 SHUTDOWN	135843 519.0	12 END JOB	135954 29.24

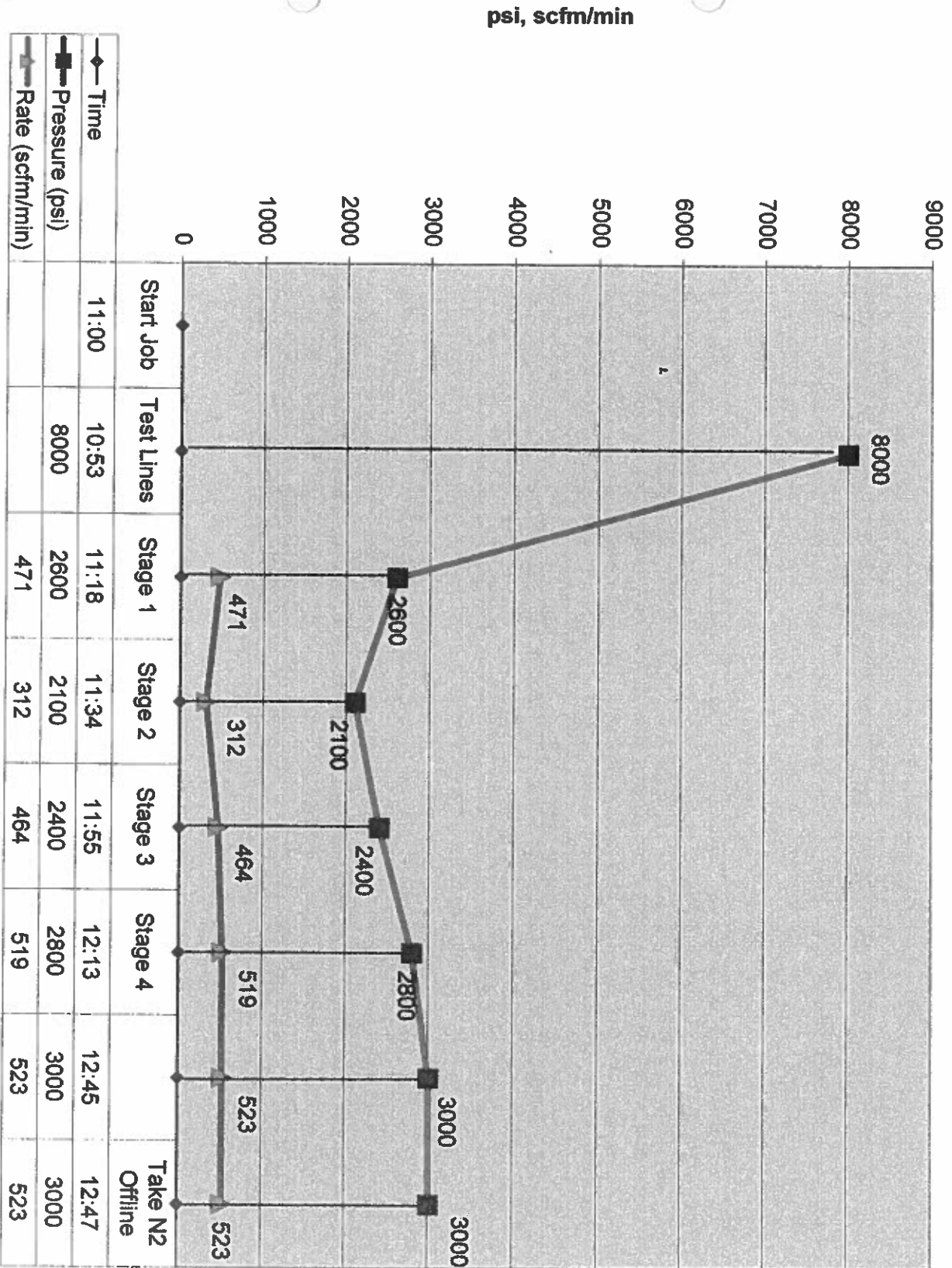
Customer: OXY  
 Type of Job: FOAM SQUEEZE  
 Company Rep: JESSE PENNELL

Job Date: 7-17-08  
 Cementer: MIKE LEIST  
 Well Name: CC

Ticket #: 6036289  
 Truck/Operator: ELITE 10/JARDINE  
 Well Number: 697-16-07A

CemWin v1.7.2  
 17-Jul-08 14:01

# Oxy - N2 Chart 697-16-07A



Time  
Pressure (psi)  
Rate (scfm/min)