
OXY GRAND JUNCTION EBUSINESS

**CC 697-16-07A
PICEANCE
Garfield County , Colorado**

Squeeze Perfs

Job Site Documents

A handwritten signature or mark, possibly a stylized 'L' or a signature, located in the lower right quadrant of the page.

The Road to Excellence Starts with Safety

Sold To #: 344034	Ship To #: 2665678	Quote #:	Sales Order #: 6022988
Customer: OXY GRAND JUNCTION EBUSINESS	Customer Rep:		
Well Name: CC	Well #: 697-16-07A	API/UWI #:	
Field:	City (SAP): UNKNOWN	County/Parish: Garfield	State: Colorado
Job Purpose: Squeeze Perfs			
Well Type: Development Well	Job Type: Squeeze Perfs		
Sales Person: HARTLEY, RICHARD	Srv Supervisor: GATLIN, STANLEY	MBU ID Emp #:	344701

Job Personnel

HES Emp Name	Exp Hrs	Emp #	HES Emp Name	Exp Hrs	Emp #	HES Emp Name	Exp Hrs	Emp #
ANGLESTEIN, TROY Edward WM		436099	ARYA, ANUPAM		399684	DOUT, JACOB J		430298
DYK, CORY		421946	GATLIN, STANLEY		344701	LITTLE, FRANK		448361
LOWE, ERIC Sean		299445	MASON, KYLE		426148	SINCLAIR, DAN J		338784
STEMPKY, MICHAEL J		392967						

Equipment

HES Unit #	Distance-1 way	HES Unit #	Distance-1 way	HES Unit #	Distance-1 way	HES Unit #	Distance-1 way
10228933C	60 mile	10248065	60 mile	10724333	60 mile	10804567	60 mile
10867531	60 mile	10950584	60 mile	10951246	60 mile	10989685	60 mile

Job Hours

Date	On Location Hours	Operating Hours	Date	On Location Hours	Operating Hours	Date	On Location Hours	Operating Hours
11 - Jul - 2008	7	2						
TOTAL	7	2	Total is the sum of each column separately					

Job

Formation Name	Top	Bottom	Called Out	Date	Time	Time Zone
Formation Depth (MD)			On Location	11 - Jul - 2008	06:00	MST
Form Type	BHST		Job Started	11 - Jul - 2008	11:14	MST
Job depth MD	8010. ft	Job Depth TVD	Job Completed	11 - Jul - 2008	13:22	MST
Water Depth		Wk Ht Above Floor	Departed Loc			
Perforation Depth (MD)	From	To				

Job Times

Description	New / Used	Max pressure psig	Size in	ID in	Weight lbm/ft	Thread	Grade	Top MD ft	Bottom MD ft	Top TVD ft	Bottom TVD ft
Production Casing Perfs	Unknown		4.5	4.	11.6				7500.		
Tubing	Unknown		2.375	1.995	4.6				7500.		

Well Data

Tools and Accessories

Type	Size	Qty	Make	Depth	Type	Size	Qty	Make	Depth	Type	Size	Qty	Make
Guide Shoe					Packer					Top Plug			
Float Shoe					Bridge Plug					Bottom Plug			
Float Collar					Retainer					SSR plug set			
Insert Float										Plug Container			
Stage Tool										Centralizers			

Miscellaneous Materials

Gelling Agt	Conc	Surfactant	Conc	Acid Type	Qty	Conc	%
Treatment Fld	Conc	Inhibitor	Conc	Sand Type	Size	Qty	

Fluid Data									
Stage/Plug #: 1									
Fluid #	Stage Type	Fluid Name	Qty	Qty uom	Mixing Density lbm/gal	Yield ft ³ /sk	Mix Fluid Gal/sk	Rate bbl/min	Total Mix Fluid Gal/sk
1	Injection Test		10.0	bbl	.	.0	.0	.0	
2	MUD FLUSH III	MUD FLUSH III - SBM (528788)	20.0	bbl	8.4	.0	.0	.0	
3	Fresh Water Spacer		5.0	bbl	8.33	.0	.0	.0	
4	Lead Cement	ELASTISEAL (TM) SYSTEM (450262)	300.0	sacks	13.1	1.57	7.21		
5	Tail Cement	ELASTISEAL (TM) SYSTEM (450262)	50.0	sacks	13.1	1.57	7.21		
6	Displacement			bbl	.	.0	.0	.0	
Calculated Values		Pressures		Volumes					
Displacement	28.8	Shut in: Instant		Lost Returns	?	Cement Slurry	97.9	Pad	
Top Of Cement	7440	5 Min		Cement Returns	7	Actual Displacement	28.8	Treatment	
Frac Gradient		15 Min		Spacers	35	Load and Breakdown		Total Job	230
Rates									
Circulating		Mixing	2	Displacement	2	Avg. Job	2		
Cement Left In Pipe	Amount 0 ft	Reason	Shoe Joint						
Frac Ring # 1 @	ID	Frac ring # 2 @	ID	Frac Ring # 3 @	ID	Frac Ring # 4 @	ID		
The Information Stated Herein Is Correct				Customer Representative Signature					

The Road to Excellence Starts with Safety

Sold To #: 344034	Ship To #: 2665678	Quote #:	Sales Order #: 6022988
Customer: OXY GRAND JUNCTION EBUSINESS	Customer Rep:		
Well Name: CC	Well #: 697-16-07A	API/UWI #:	
Field:	City (SAP): UNKNOWN	County/Parish: Garfield	State: Colorado
Legal Description:			
Lat:		Long:	
Contractor:	Rig/Platform Name/Num: Workover		
Job Purpose: Squeeze Perfs		Ticket Amount:	
Well Type: Development Well	Job Type: Squeeze Perfs		
Sales Person: HARTLEY, RICHARD	Srv Supervisor: GATLIN, STANLEY	MBU ID Emp #:	344701

Activity Description	Date/Time	Cht #	Rate bbl/min	Volume Bbl		Pressure psig		Comments
				Stage	Total	Tubing	Casing	
Arrive on Location	07/11/2008 0600							Arrived at location 2 hrs early
Location Assessment	07/11/2008 0615							Discussed rig up with bulk equipment, pump and nitrogen units.
Spot Equipment	07/11/2008 0730							Waited for company representative and rig crew to arrive to spot equipment. HES pump, 660, 400, N2 truck, Zone Seal trailer, 2 pick-ups.
Safety Huddle	07/11/2008 0820							Discussed rig up procedure and safety concerns.
Rig Up	07/11/2008 0830							Iron to the floor, iron to the pit, iron to the backside, water lines, bulk hoses.
Safety Meeting	07/11/2008 1045							Discussed job procedure and safety issues.
Start Job	07/11/2008 1114							
Prime Lines	07/11/2008 1116			1.5				
Test Lines	07/11/2008 1117						6009	HES Cement lines
Test Lines	07/11/2008 1121						7000	N2 lines
Pump Spacer	07/11/2008 1125			10			2350	Fresh Water
Pump Mud Flush	07/11/2008 1135			22			427	More Flow III
Pump Spacer	07/11/2008 1147			10			2552	Fresh Water

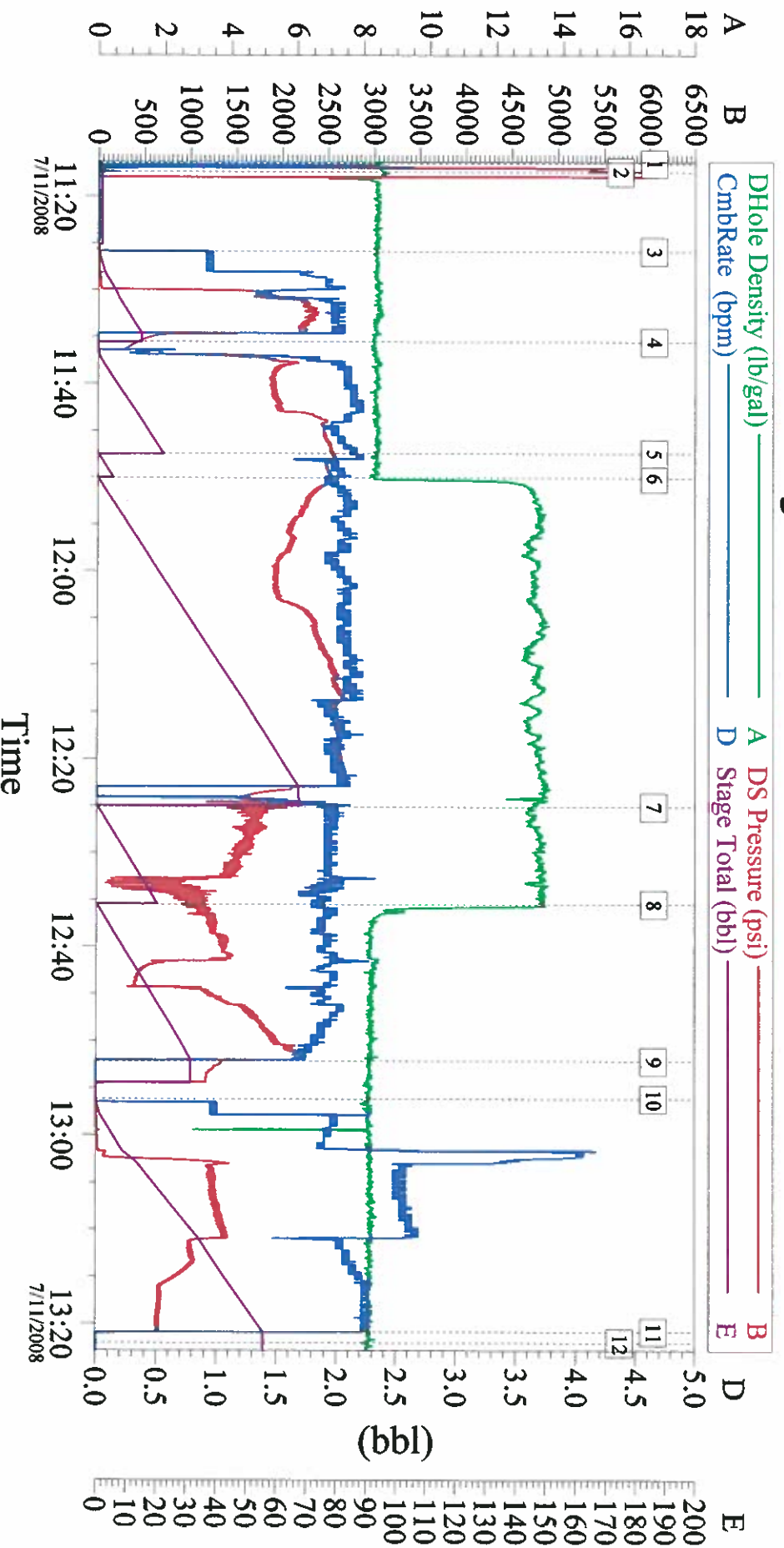
Cementing Job Log

Pump Lead Cement	07/11/2008 1150			83.9			2508	300 sks of Elastiseal @ 13.1# - 1.57 yield - 7.21 H2O requirement
Stage One	07/11/2008 1140						3600	940 SCFM
Stage Two	07/11/2008 1150						2775	617 SCFM
Stage Three	07/11/2008 1155						2950	758 SCFM
Stage Four	07/11/2008 1200						3350	911 SCFM
Stage Five	07/11/2008 1211						4100	1037 SCFM
Take N2 Off Line	07/11/2008 1223						0	0 SCFM
Shut Down	07/11/2008 1224						1510	Water delivery issues. Gravel in water lines.
Resumed Pumping	07/11/2008 1225						1450	Water delivery issues resolved.
Pump Tail Cement	07/11/2008 1225			14			1769	300 sks of Elastiseal @ 13.1# - 1.57 yield - 7.21 H2O requirement
Pump Displacement	07/11/2008 1235			28.8			1051	
Shut Down	07/11/2008 1252							
Reverse Out Tubing	07/11/2008 1256			55			452	7 bbls of cement reversed out to surface. 325 sks of cement through perfs.
Shut Down	07/11/2008 1320							
End Job	07/11/2008 1322				230			

2 3/8 Tubing to retainer - 7440', Perfs in 4" Casing at 7450', 7" Casing to 5815'.

Thank you for using Grand Junction Halliburton
Stan Gatlin & Crew

Oxy Foam ReCement



Event Log

1 Start Job	11:16:29	2 Test Lines	11:17:24	3 Pump Injection Test	11:25:52
4 Pump Foamed MudFlush	11:35:33	5 Pump Foamed Water Spacer	11:47:27	6 Pump Foamed Lead Cement	11:50:03
7 Pump Tail Cement	12:25:06	8 Pump Displacement	12:35:27	9 Shutdown	12:52:08
10 Reverse Out Tubing	12:56:08	11 Shutdown	13:20:51	12 End Job	13:22:00

Customer: Oxy
Well Description: Cascade Creek
Co. Rep. Jesse Pennell

Job Date: 7/11/08
Well #: 697-16-07A
Cementier: Stan Gatlin

Ticket #: 6022988
Job Type: Foam Squeeze Thru Perfs
Operator: Troy Anglesien / TC4

HALLIBURTON

TG Version G3.4.1
11-Jul-08 15:16