

## The Road to Excellence Starts with Safety

Sold To #: 344034		Ship To #: 344034		Quote #:		Sales Order #: 5997479	
Customer: OXY GRAND JUNCTION EBUSINESS				Customer Rep: PENNELL, JESSE			
Well Name: CC		Well #: 697-16-07		API/UWI #: 05-045-13991			
Field:		City (SAP): UNKNOWN		County/Parish: Garfield		State: Colorado	
Lat: N 39.527 deg. OR N 39 deg. 31 min. 37.844 secs.				Long: W 108.217 deg. OR W -109 deg. 46 min. 59.459 secs.			
Job Purpose: Squeeze Perfs							
Well Type: Development Well				Job Type: Squeeze Perfs			
Sales Person:				Srcv Supervisor: FEUERBORN, JOHN MBU ID Emp #: 381677			
Job Personnel							
HES Emp Name	Exp Hrs	Emp #	HES Emp Name	Exp Hrs	Emp #	HES Emp Name	Exp Hrs
BANKS, BRENT A		371353	CUSTER, JASON Richard		414714	FEUERBORN, JOHN William	381677
STEMPKY, MICHAEL J		392967	WOOLERY, JEREMY		368214		
Equipment							
HES Unit #	Distance-1 way	HES Unit #	Distance-1 way	HES Unit #	Distance-1 way	HES Unit #	Distance-1 way
10011429	120 mile	10038849C	120 mile	10086132C	120 mile	10719771	120 mile
10804487	120 mile						
Job Hours							
Date	On Location Hours	Operating Hours	Date	On Location Hours	Operating Hours	Date	On Location Hours
6-30-08	7	2.5					
TOTAL		Total is the sum of each column separately					
Job				Job Times			
Formation Name				Date		Time	
Formation Depth (MD) Top		Bottom		Called Out		Time Zone	
Form Type		BHST		On Location		30 - Jun - 2008 07:00 CST	
Job depth MD 8848. ft		Job Depth TVD 8848. ft		Job Started		30 - Jun - 2008 09:51 CST	
Water Depth		Wk Ht Above Floor 4. ft		Job Completed		23 - Jun - 2008 13:00 CST	
Perforation Depth (MD) From		To		Departed Loc			
Well Data							
Description	New / Used	Max pressure psig	Size in	ID in	Weight lbm/ft	Thread	Grade
PRODUCTION CASING	Used		4.5	4.	11.6		N-80
TUBBING	Used		2.375	1.995	4.7		N-80
Sales/Rental/3 <sup>rd</sup> Party (HES)							
Description				Qty	Qty uom	Depth	Supplier
SRV LDR, SRV COORD, TECH PERSONNEL/HR,ZI				1	EA		
Tools and Accessories							
Type	Size	Qty	Make	Depth	Type	Size	Qty
Guide Shoe					Packer		
Float Shoe					Bridge Plug		
Float Collar					Retainer		
Insert Float							
Stage Tool							
Miscellaneous Materials							
Gelling Agt		Conc		Surfactant		Conc	
Treatment Fld		Conc		Inhibitor		Conc	
				Acid Type		Qty	Conc
				Sand Type		Size	Qty

Fluid Data										
Stage/Plug #: 1										
Fluid #	Stage Type	Fluid Name	Qty	Qty uom	Mixing Density lbm/gal	Yield ft <sup>3</sup> /sk	Mix Fluid Gal/sk	Rate bbl/min	Total Mix Fluid Gal/sk	
1	Lead Cement #1	SQUEEZECM (TM) SYSTEM (452971)	210.0	sacks	14.	1.55	7.9			
7.799 Gal		FRESH WATER								
2	Lead Cement #2	SQUEEZECM (TM) SYSTEM (452971)	170.0	sacks	13.5	1.32	6.0			
6.783 Gal		FRESH WATER								
3	Tail Cement	SQUEEZECM (TM) SYSTEM (452971)	50.0	sacks	15.8	1.15	4.95			
4	DISPLACEMENT			bbl	.	.0	.0	.0		
Calculated Values		Pressures		Volumes						
Displacement		Shut In: Instant		Lost Returns		Cement Slurry		Pad		
Top Of Cement		5 Min		Cement Returns		Actual Displacement		Treatment		
Frac Gradient		15 Min		Spacers		Load and Breakdown		Total Job		
Rates										
Circulating		Mixing		Displacement		Avg. Job				
Cement Left In Pipe	Amount	0 ft	Reason	Shoe Joint						
Frac Ring # 1 @	ID	Frac ring # 2 @	ID	Frac Ring # 3 @	ID	Frac Ring # 4 @	ID			
The Information Stated Herein Is Correct				Customer Representative Signature						

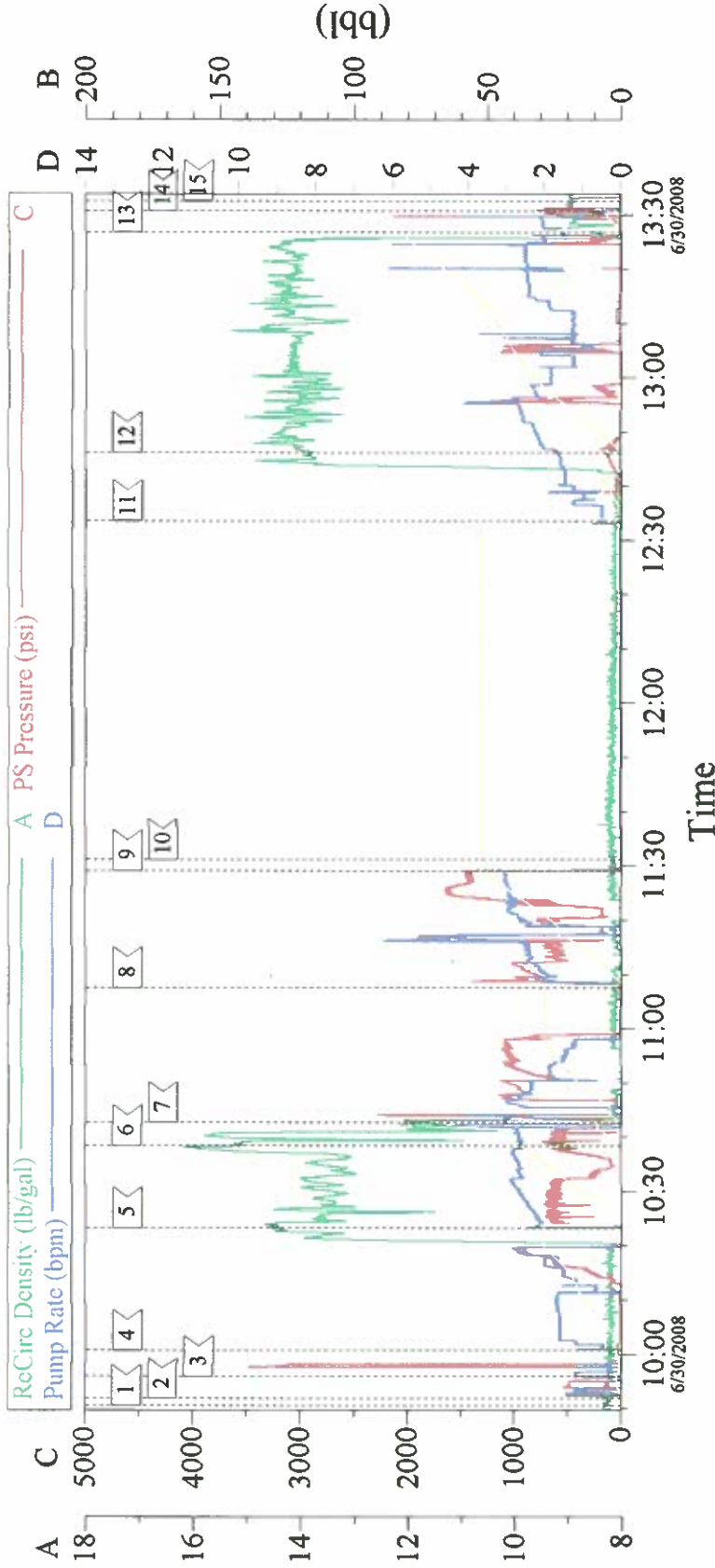
*The Road to Excellence Starts with Safety*

Sold To #: 344034	Ship To #: 344034	Quote #:	Sales Order #: 5997479
Customer: OXY GRAND JUNCTION EBUSINESS		Customer Rep: PENNELL, JESSE	
Well Name: CC	Well #: 697-16-07	API/UWI #: 05-045-13991	
Field:	City (SAP): UNKNOWN	County/Parish: Garfield	State: Colorado
Legal Description:			
Lat: N 39.527 deg. OR N 39 deg. 31 min. 37.844 secs.		Long: W 108.217 deg. OR W -109 deg. 46 min. 59.459 secs.	
Contractor:	Rig/Platform Name/Num: WORKOVER		
Job Purpose: Squeeze Perfs			Ticket Amount:
Well Type: Development Well	Job Type: Squeeze Perfs		
Sales Person:	Srcv Supervisor: FEUERBORN, JOHN	MBU ID Emp #: 381677	

Activity Description	Date/Time	Cht #	Rate bbl/min	Volume bbl		Pressure psig		Comments
				Stage	Total	Tubing	Casing	
Pre-Convoy Safety Meeting	06/30/2008 04:45							
Crew Leave Yard	06/30/2008 05:00							
Arrive At Loc	06/30/2008 07:00							
Pre-Job Safety Meeting	06/30/2008 09:30							
Start Job	06/30/2008 09:47							
Pressure Up Well	06/30/2008 09:51		1				500.0	BROUGHT BACK SIDE PRESSURE TO 500 SHUT IN
Test Lines	06/30/2008 09:56						3500.0	
Injection Test	06/30/2008 09:59		2.5				900.0	
Pump Lead Cement	06/30/2008 10:22		2.5	40			630.0	170sks PUMPED AT 13.5ppg
Pump Tail Cement	06/30/2008 10:37		2.5	10.2			636.0	50sks PUMPED AT 15.8ppg
Pump Displacement	06/30/2008 10:40		2.5	28.8			1100.0	H2O
Reverse Circ Well	06/30/2008 11:07		2.5	53			1100.0	ABOUT 4BBLS TO PIT
Shutdown	06/30/2008 11:29							
Rig-Up Equipment	06/30/2008 11:35							RIG UP SECOND SQUEEZE TO PARISITE
Start Job	06/30/2008 12:32							
Pump Spacer 1	06/30/2008 12:32		2	13.5			116.0	H2O

Activity Description	Date/Time	Cht #	Rate bbl/ min	Volume bbl		Pressure psig		Comments
				Stage	Total	Tubing	Casing	
Pump Lead Cement	06/30/2008 12:45		2.5	58			1200. 0	210sks PUMPED AT 14ppg
Pump Displacement	06/30/2008 13:26		2	6			1000. 0	H2O
Shutdown	06/30/2008 13:30							
End Job	06/30/2008 13:31							
Post-Job Safety Meeting (Pre Rig-Down)	06/30/2008 13:45							
Pre-Convoy Safety Meeting	06/30/2008 16:00							
Crew Leave Location	06/30/2008 16:05							

# SQUEEZE



## Event Log

1	START JOB	09:50:30	2	PRESSURE UP BACK SIDE	09:51:48	3	TEST LINES	09:55:53
4	SET INJECTION RATE	10:00:43	5	PUMP LEAD CMT	10:23:16	6	PUMP TAIL CMT	10:38:23
7	PUMP DISPLACEMENT	10:42:41	8	REVERSE OUT	11:07:31	9	Shutdown	11:29:05
10	RIG UP SECOND JOB	11:31:12	11	CHECK PARASITE LINE	12:33:34	12	PUMP LEAD CMT	12:46:13
13	PUMP DISPLACEMENT	13:26:54	14	SHUT DOWN	13:30:49	15	END JOB	13:32:37

Customer: OXY	Job Date: 6-30-08	Ticket #: 5957974
Well Number: 697-16-07	Pump Truck CMT 400	ADC Used: YES
Supervisor: JOHN FEUERBORN	Company Rep.: JESSE PENNELL	Oper: BRENT BANKS

CemWin v1.7.2  
30-Jun-08 13:48