



CEMENT BOND LOG

Mesa Wireline

Company	ENCANA OIL & GAS (USA)		
Well	PURITAN 6-4-34		
Field	WATTENBERG		
County	WELD		
State	COLORADO		
Company ENCANA OIL & GAS (USA)			
Well PURITAN 6-4-34			
Field WATTENBERG			
County WELD State COLORADO			
Location:	API # : 05-123-33409-0000		Other Services
SHL: NWSE 34-2N-68W68M BHL: SWNE 34-2N-68W68M SEC. 34 TWP. 2N RGE. 68W			NONE
Permanent Datum	GROUND LEVEL		Elevation 5213'
Log Measured From	KELLY BUSHING = 13'		K.B. 5015' D.F. 5016' G.L. 5002'
Drilling Measured From	KELLY BUSHING		

Date	29 AUG 2011						
Run Number	ONE						
Depth Driller	8435'						
Depth Logger	8401'						
Bottom Logged Interval	8401'						
Top Log Interval	4000'						
Open Hole Size	7.785"						
Type Fluid	WATER						
Density / Viscosity	~8.34 LBS/GAL						
Max. Recorded Temp.	260 DegF						
Estimated Cement Top	4480'						
Time Well Ready	N/A						
Time Logger on Bottom	N/A						
Equipment Number	10801W / PB1						
Location	AULT.CO						
Recorded By	B. MAYNARICH						
Witnessed By	GARY CUMMINGS						
Borehole Record							
Run Number	Bit	From	To	Size	Weight	From	To
ONE	12.25"	0'	851'	N/A			
TWO	7.875"	0'	8435'				
Tubing Record							
Casing Record	Size	Wgt/Ft	Top	Bottom			
Surface String	8.625"	24#	0'	851'			
Prot. String							
Production String	4.5"	11.6#	0'	8395'			
Liner							

<<< Fold Here >>>

All interpretations are opinions based on inferences from electrical or other measurements and we cannot and do not guarantee the accuracy or correctness of any interpretation, and we shall not, except in the case of gross or willful negligence on our part, be liable or responsible for any loss, costs, damages, or expenses incurred or sustained by anyone resulting from any interpretation made by any of our officers, agents or employees. These interpretations are also subject to our general terms and conditions set out in our current Price Schedule.

Comments

NO LOGS AVAILABLE TO CORRELATE TO.
SHORT JOINT 7481'- 7503'

WE APPRECIATE YOUR BUSINESS, MESA WIRELINE LLC, GRAND JUNCTION CO. (970) 257-0458



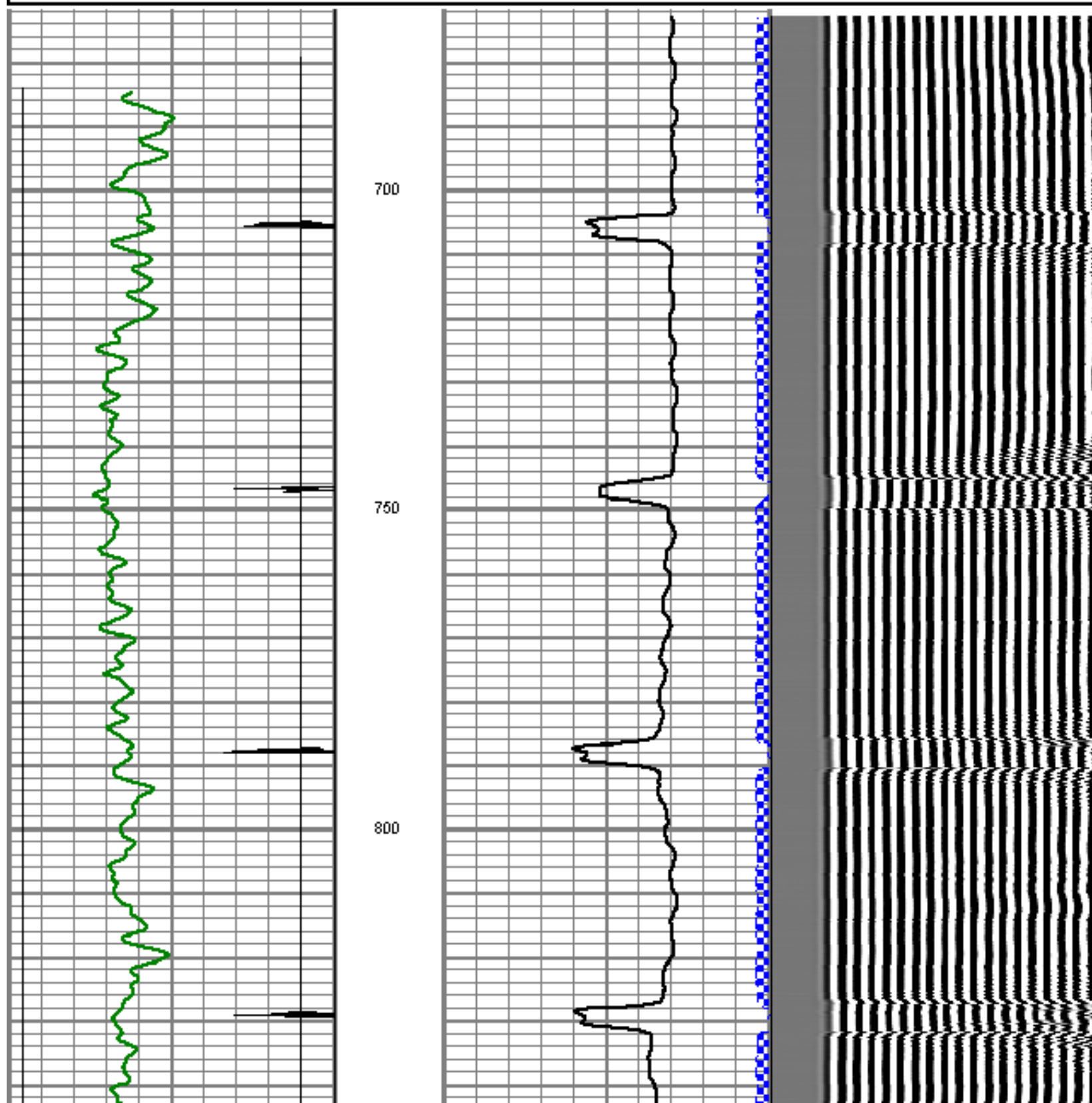
SURFACE CASING PASS

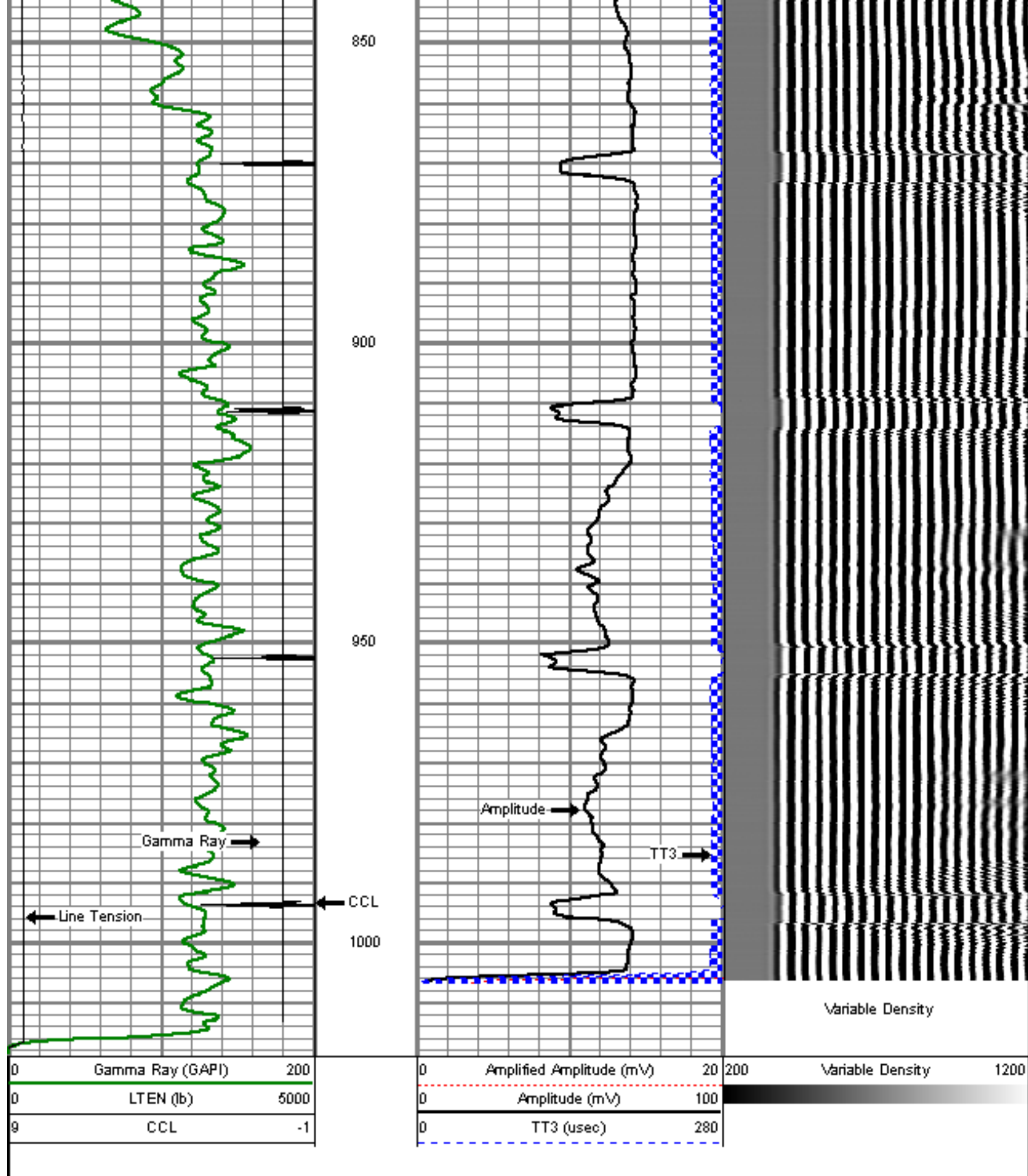
Database File: puritan 6-4-34.db
Dataset Pathname: pass5
Presentation Format: dcbl_prb
Dataset Creation: Mon Aug 29 10:19:04 2011 by Log Std Casedhole 09061
Charted by: Depth in Feet scaled 1:240

0	Gamma Ray (GAPI)	200
0	LTEN (lb)	5000
9	CCL	-1

0	Amplified Amplitude (mV)	20
0	Amplitude (mV)	100
0	TT3 (usec)	280

200 Variable Density 1200





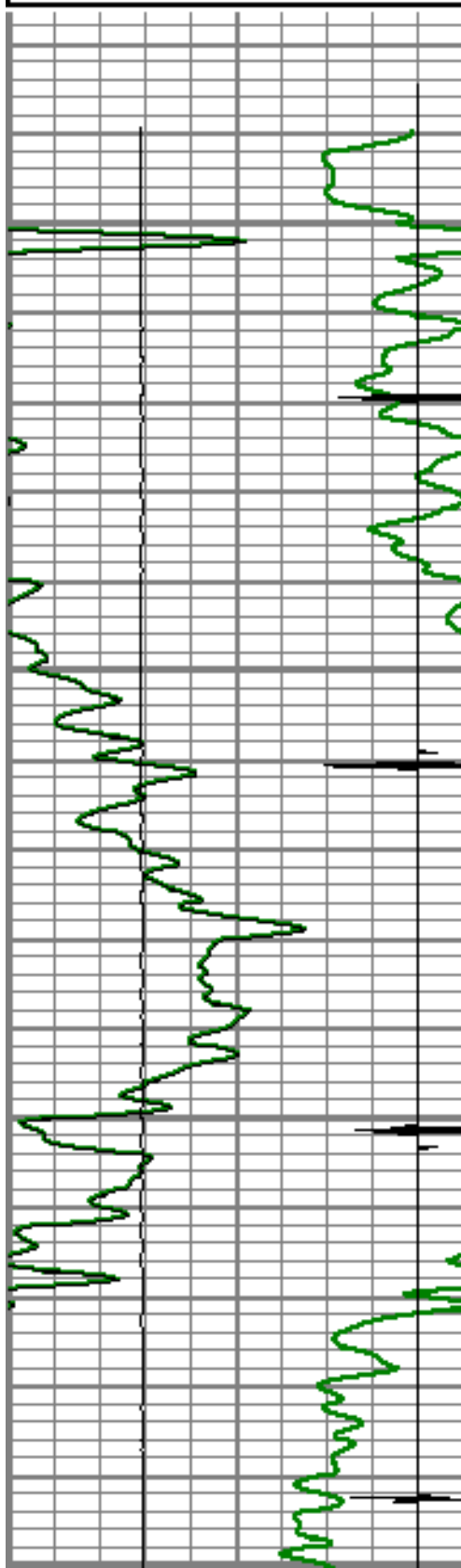
Mesa Wireline

Database File: puritan 6-4-34.db
 Dataset Pathname: pass3
 Presentation Format: dobl_prb
 Dataset Creation: Mon Aug 29 08:38:13 2011 by Log Std Casedhole 09061
 Charted by: Depth in Feet scaled 1:240

0	Gamma Ray (GAPI)	200
0	LTEN (lb)	5000
9	CCL	-1

0	Amplified Amplitude (mV)	20
0	Amplitude (mV)	100
0	TT3 (usec)	280

200	Variable Density	1200
-----	------------------	------

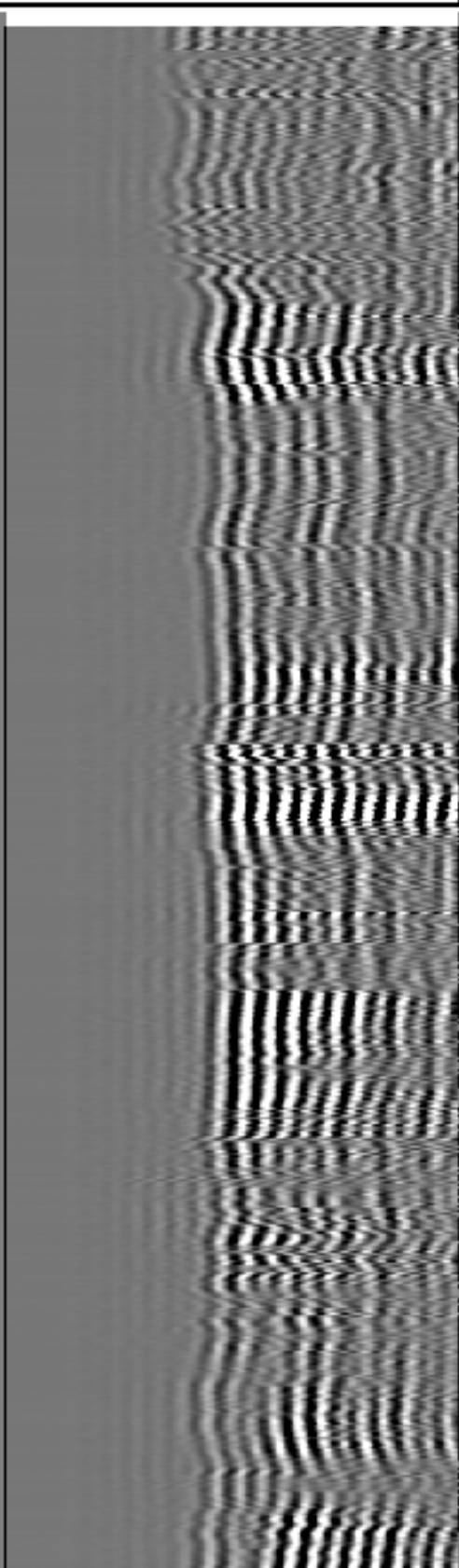
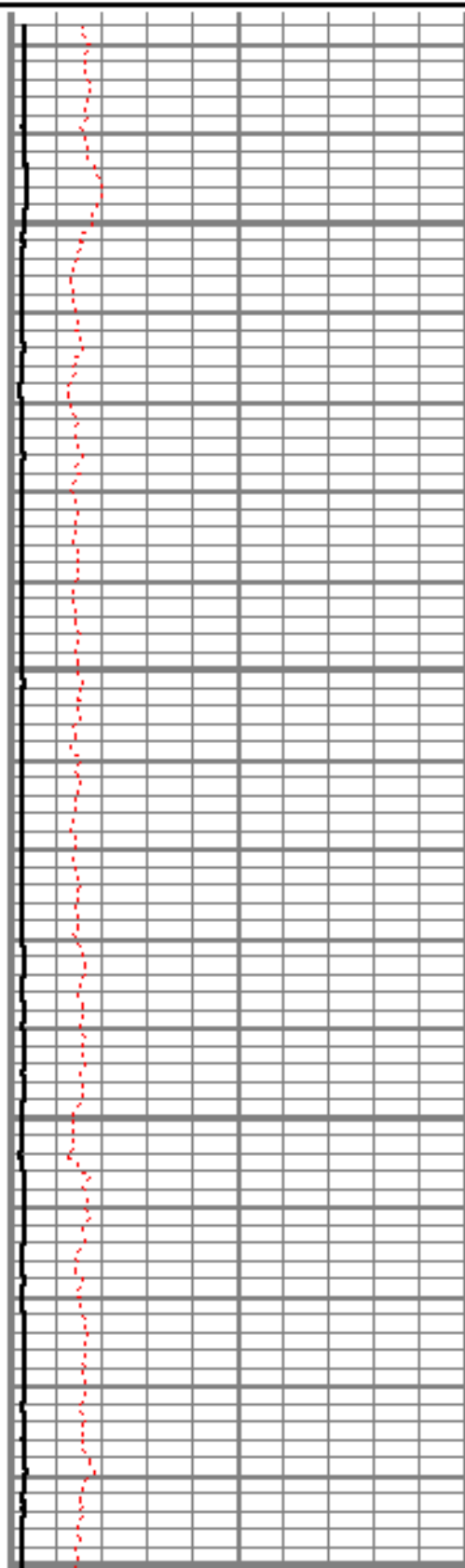


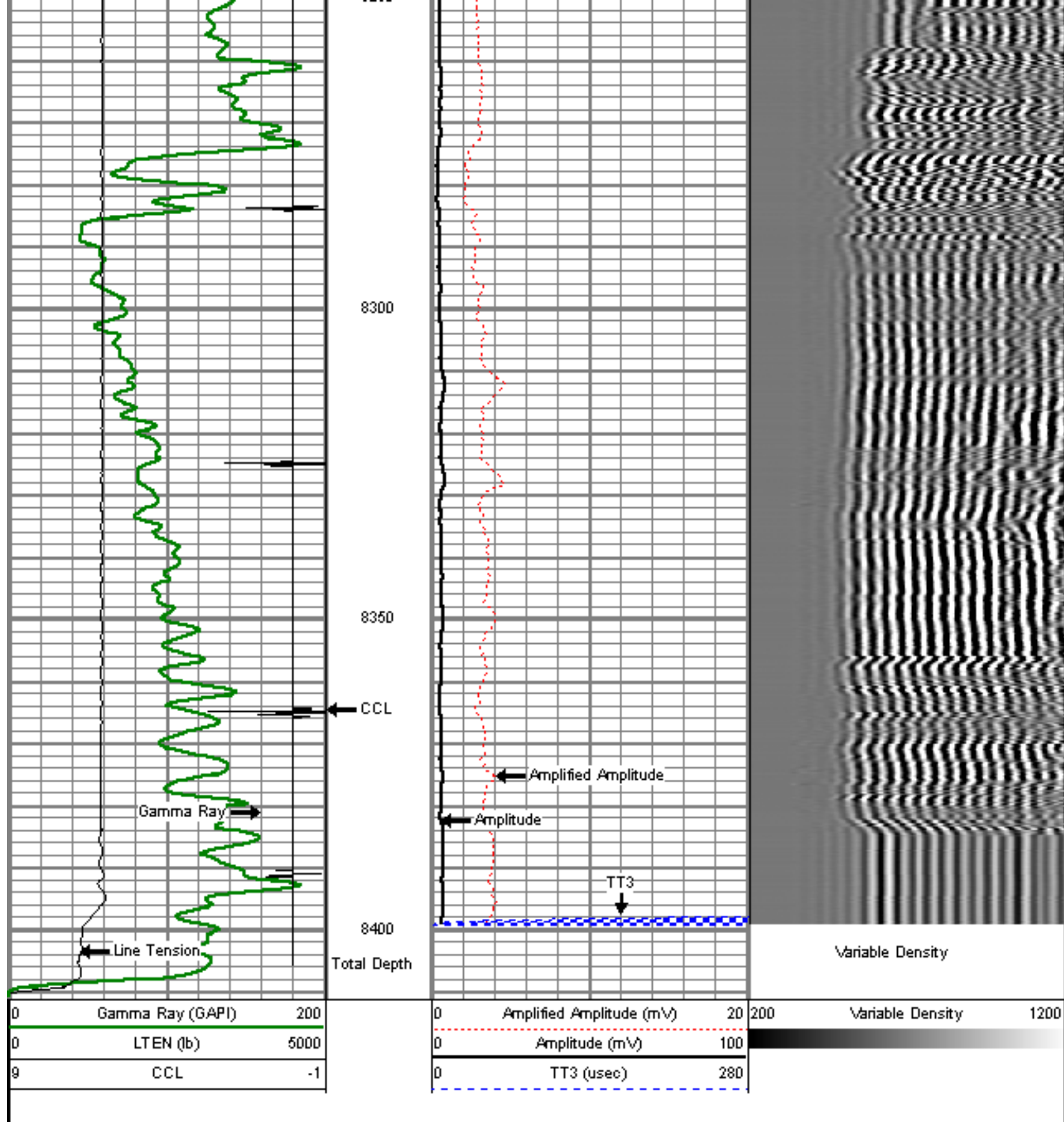
8100

8150

8200

8250





MAIN PASS

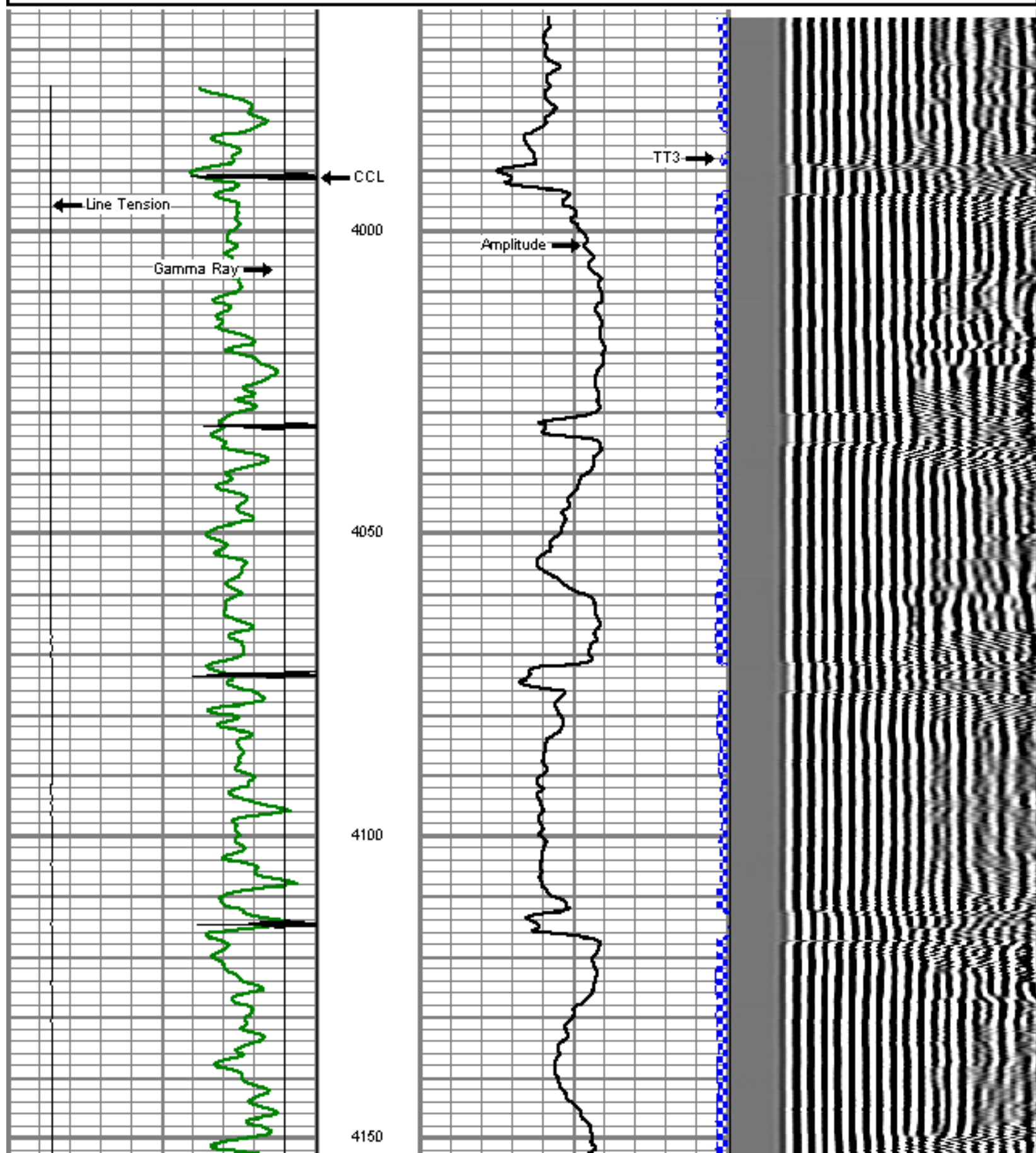
5" = 100'

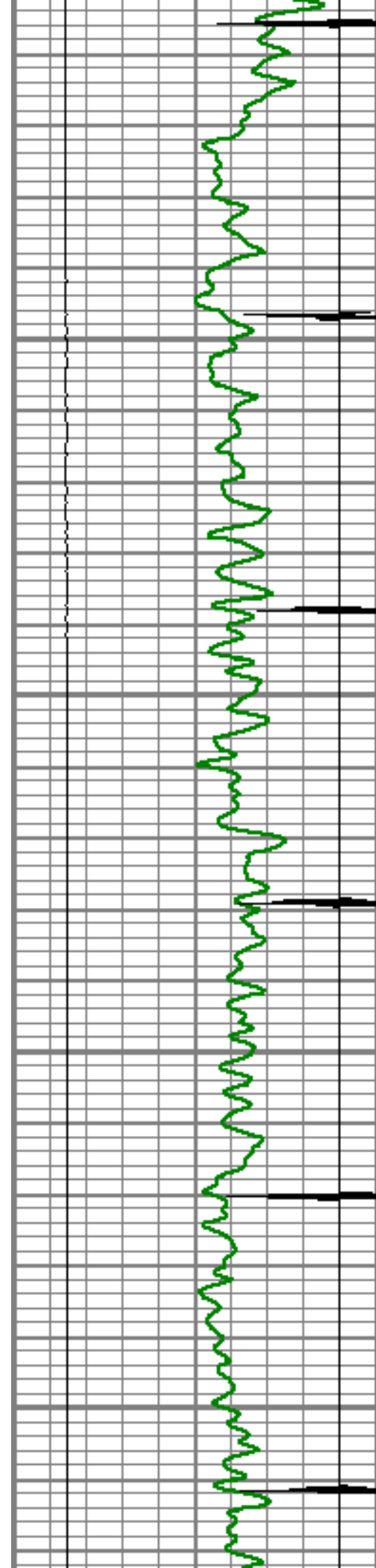
Database File: puritan 6-4-34.db
 Dataset Pathname: pass4
 Presentation Format: dcbl_prb

0	Gamma Ray (GAPI)	200
0	LTEN (lb)	5000
9	CCL	-1

0	Amplified Amplitude (mV)	20
0	Amplitude (mV)	100
0	TT3 (usec)	280

200 Variable Density 1200



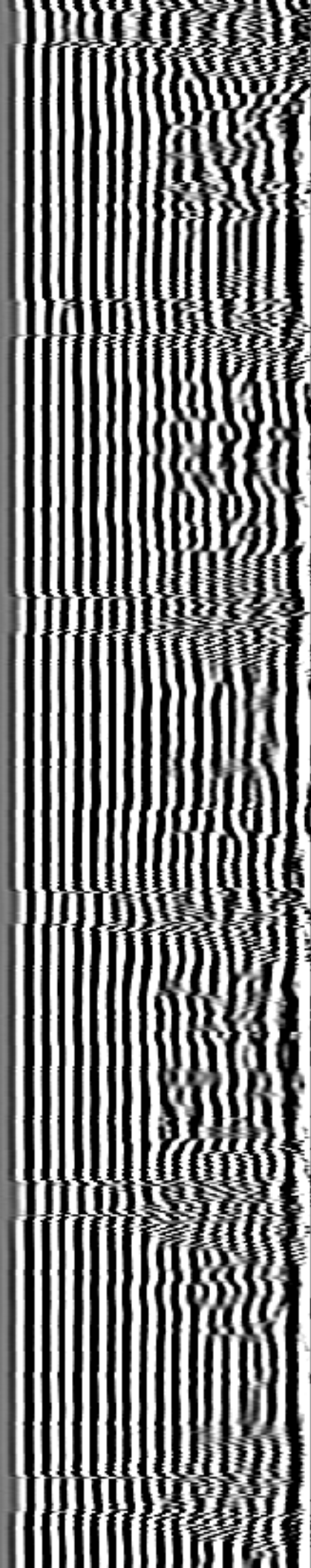
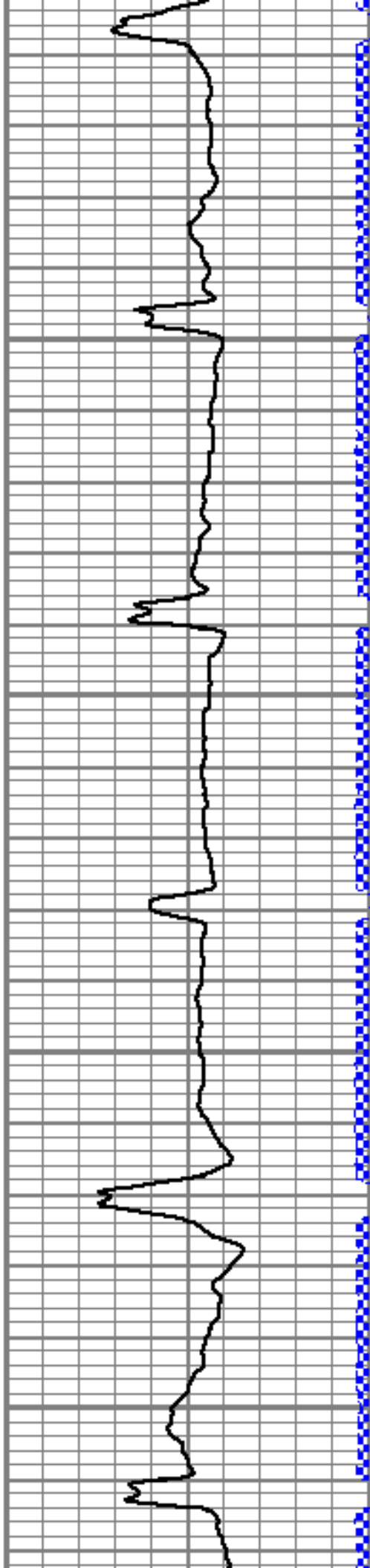


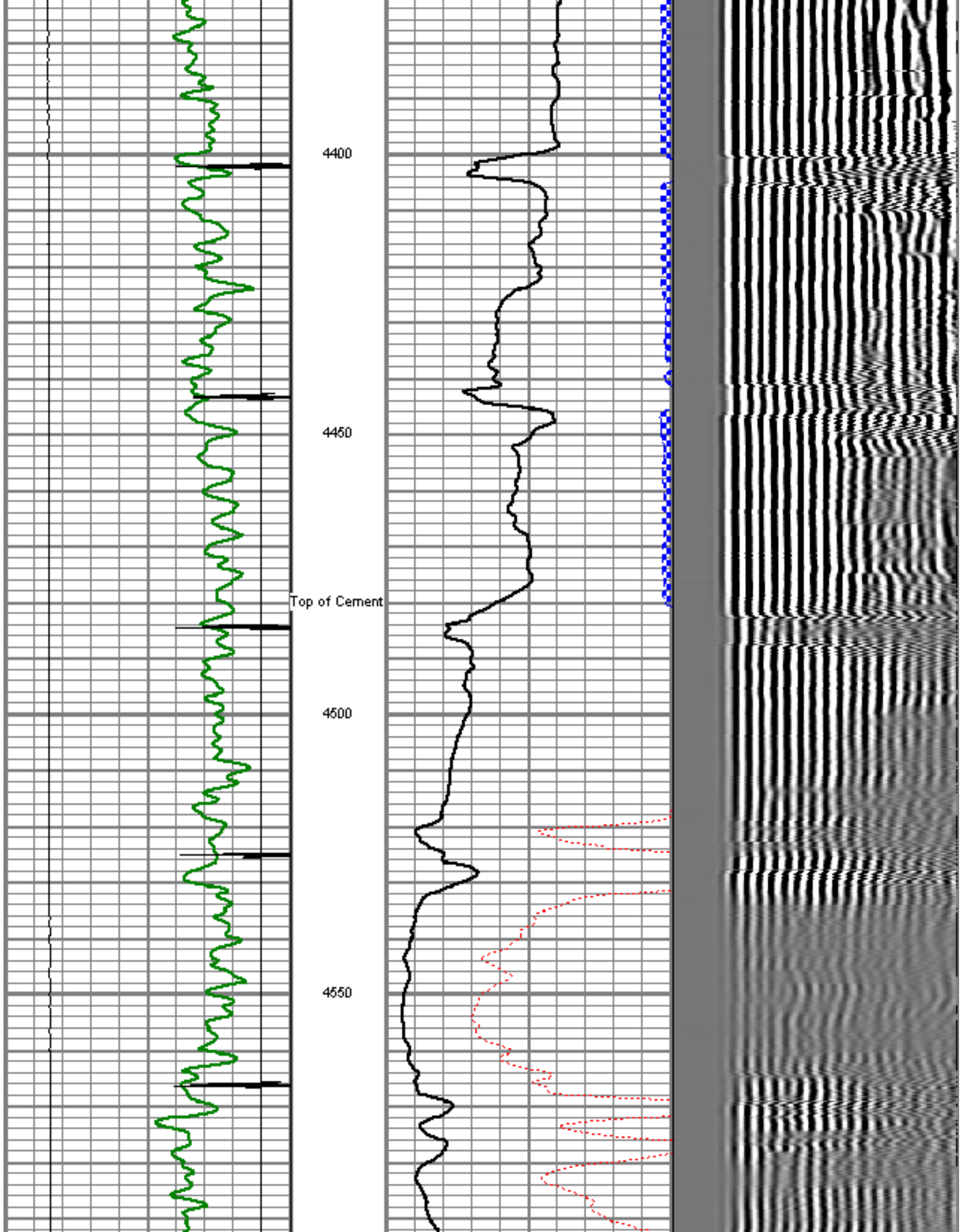
4200

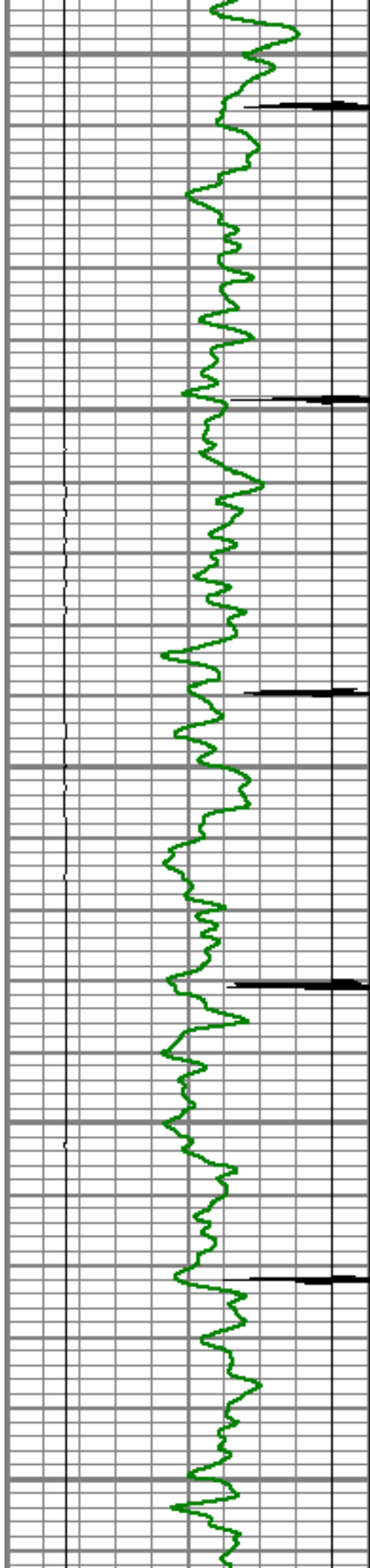
4250

4300

4350







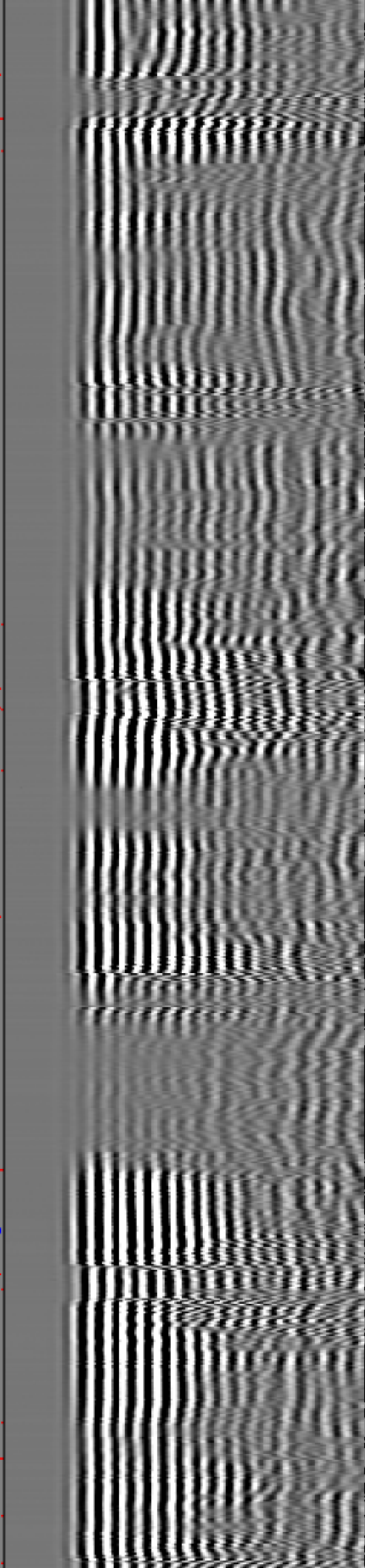
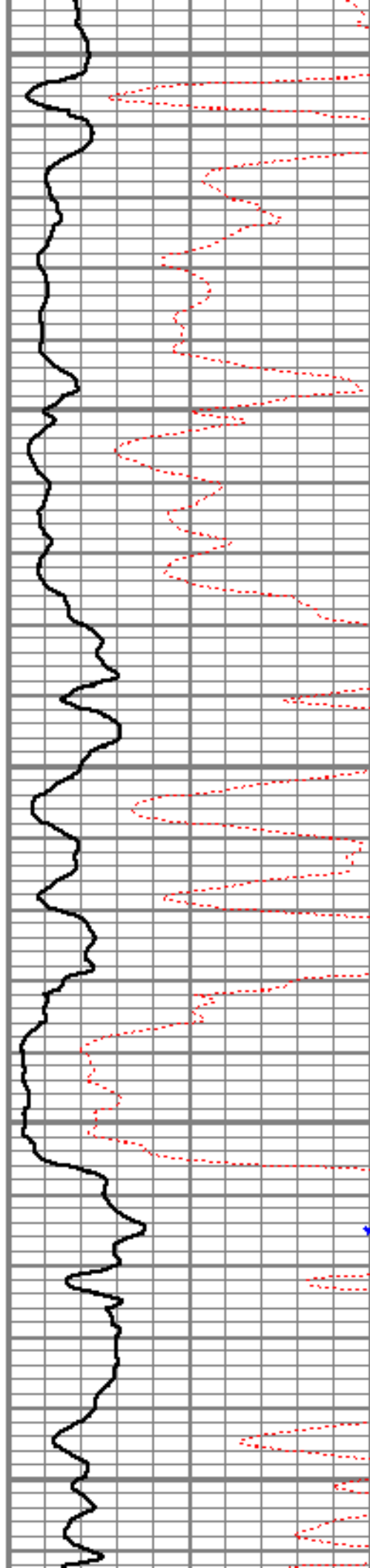
4600

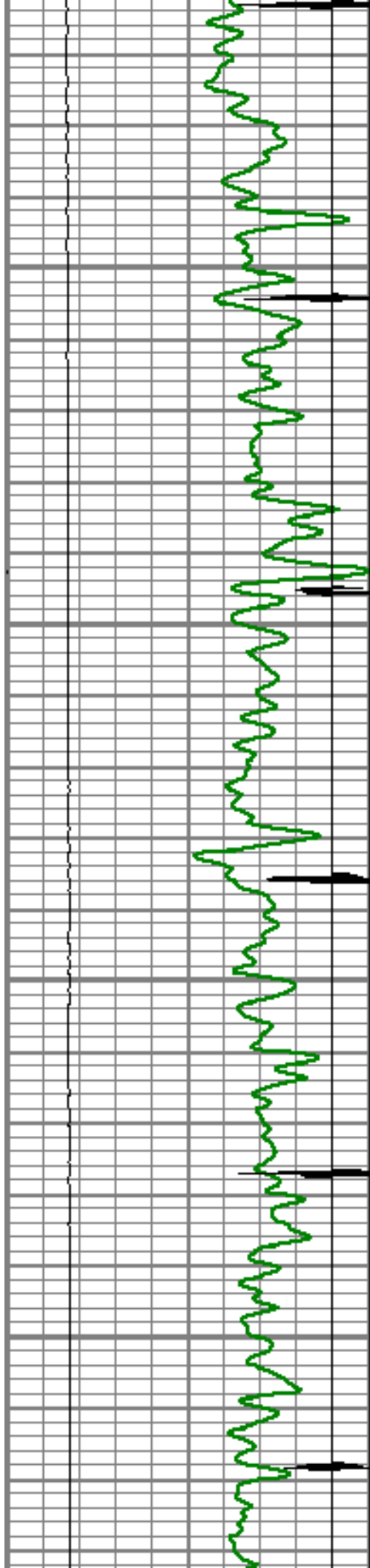
4650

4700

4750

4800



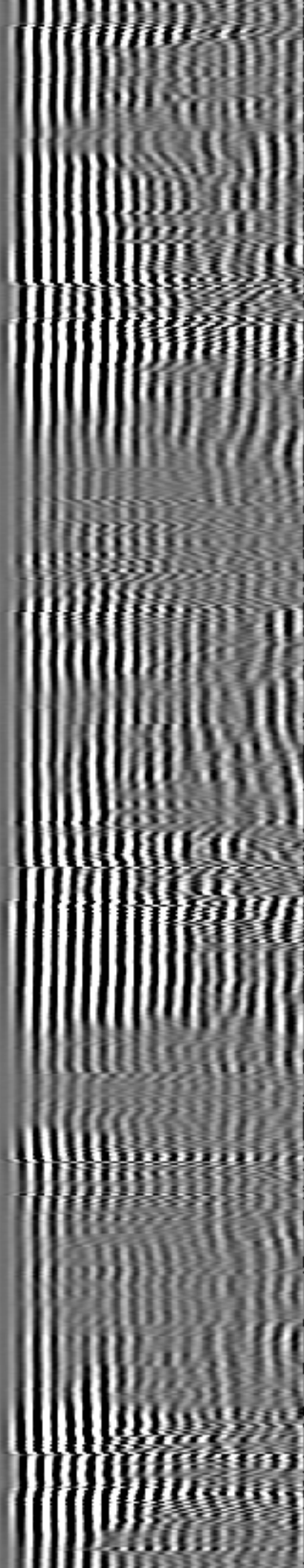
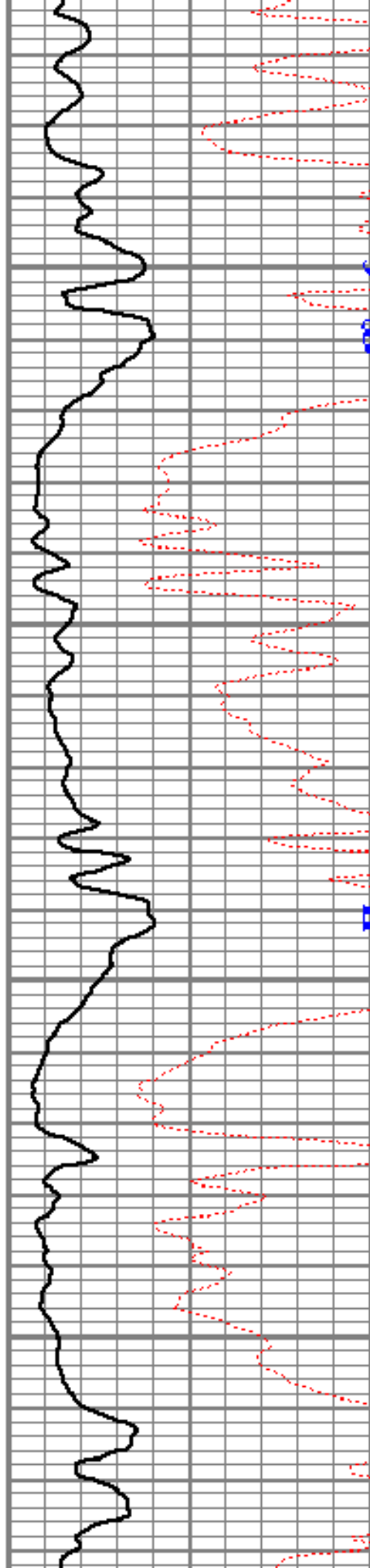


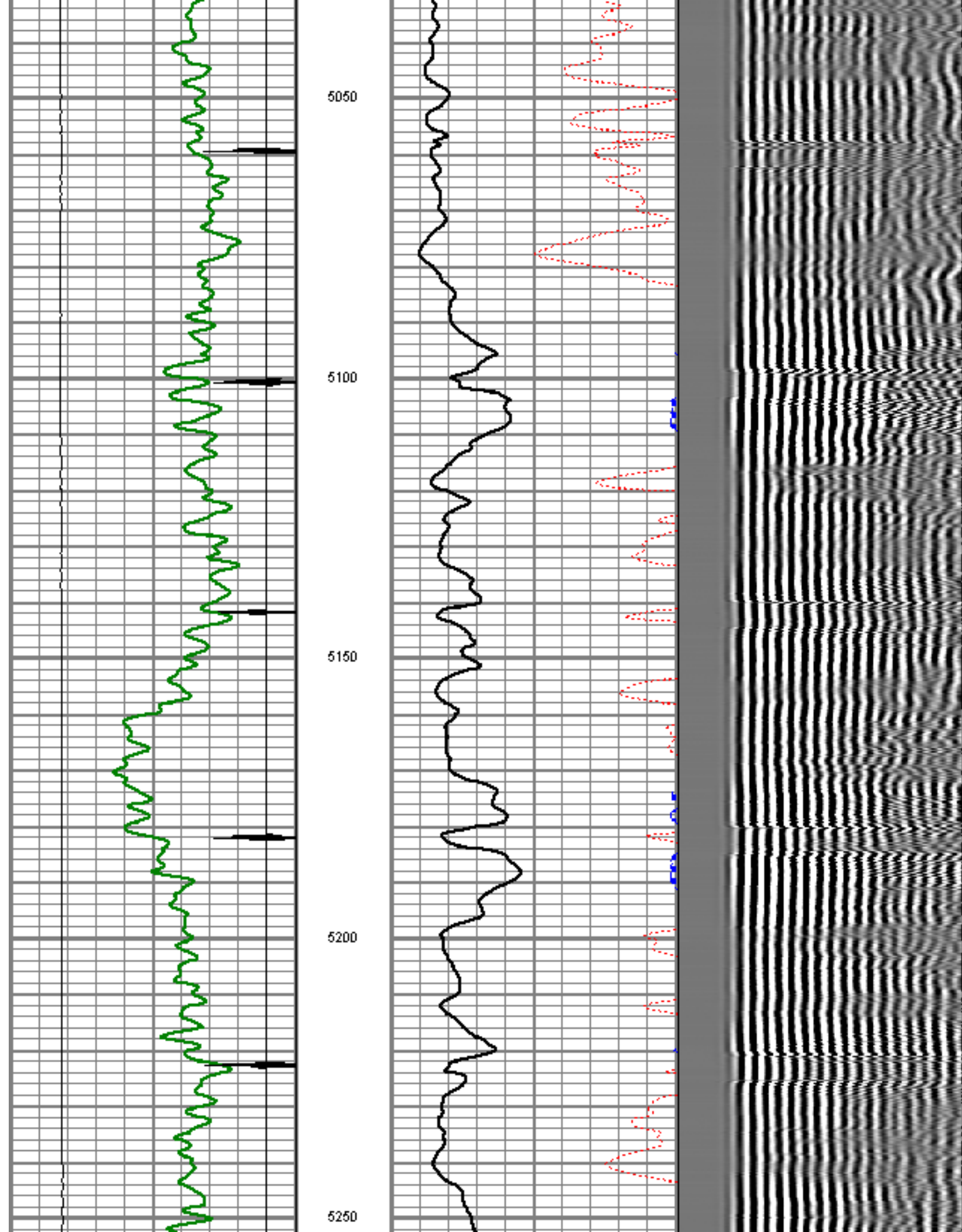
4850

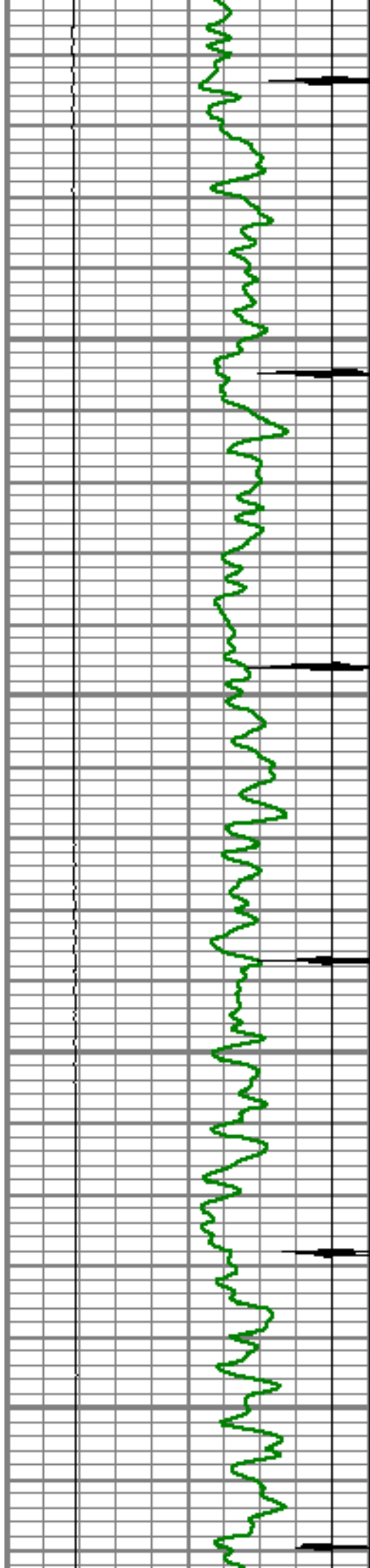
4900

4950

5000





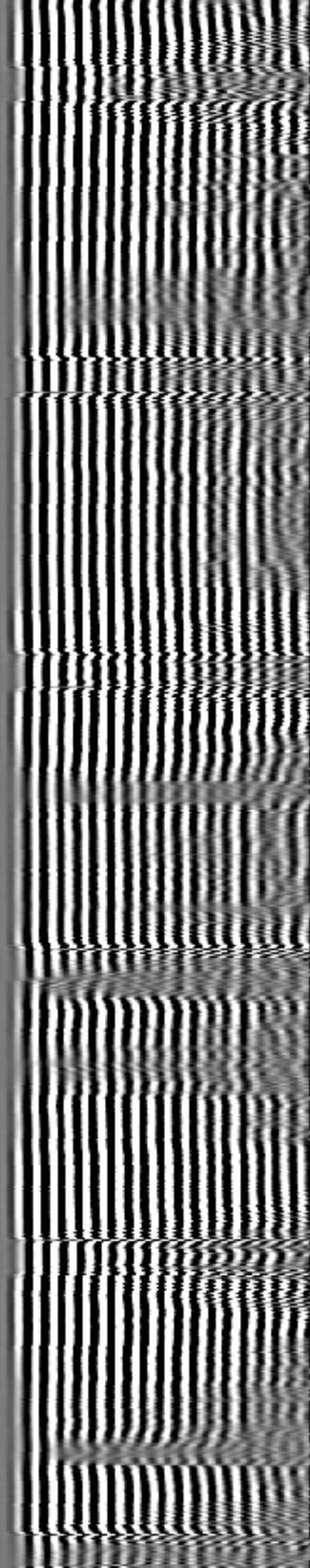
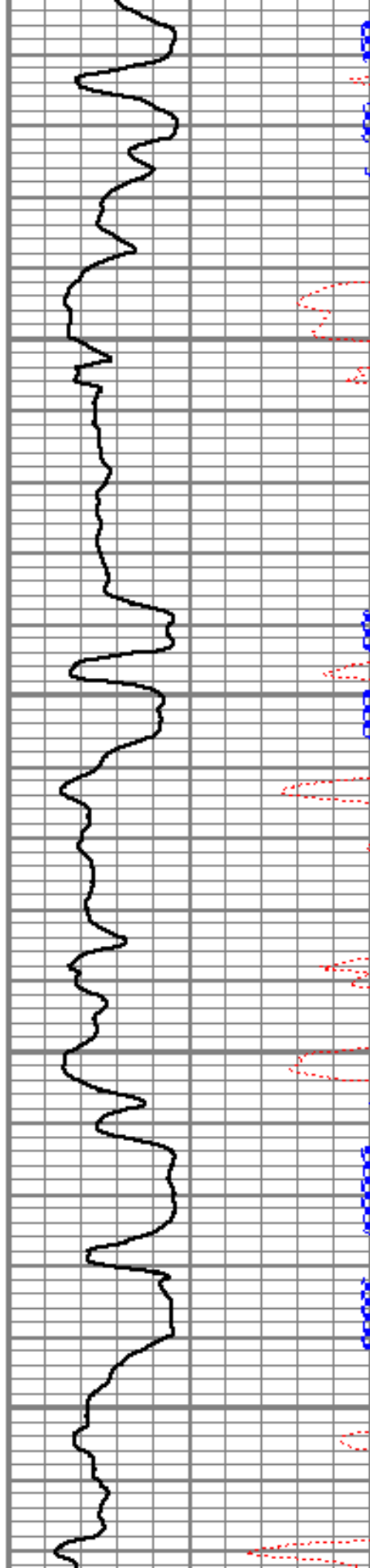


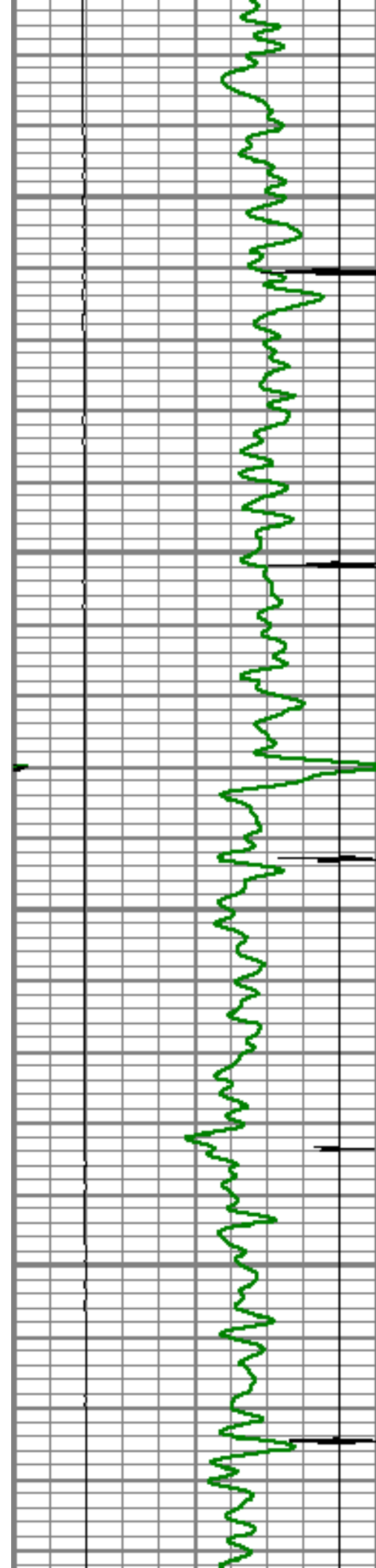
5300

5350

5400

5450



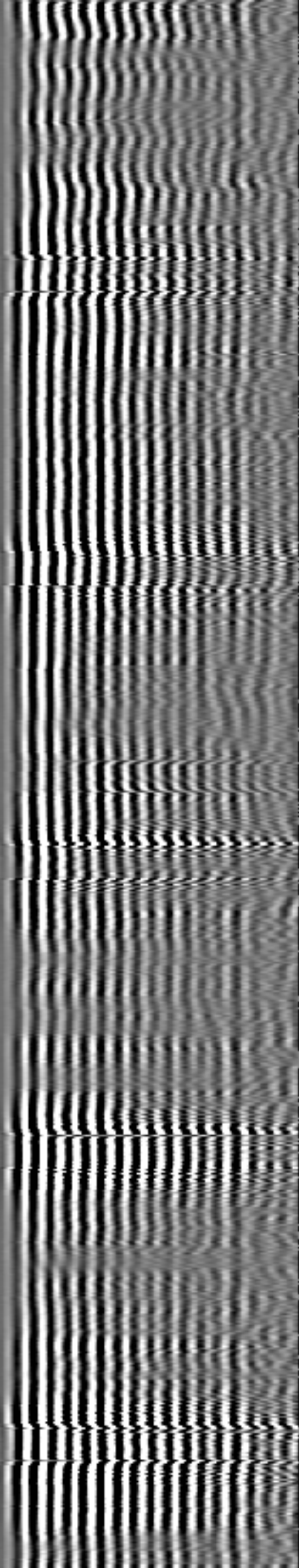
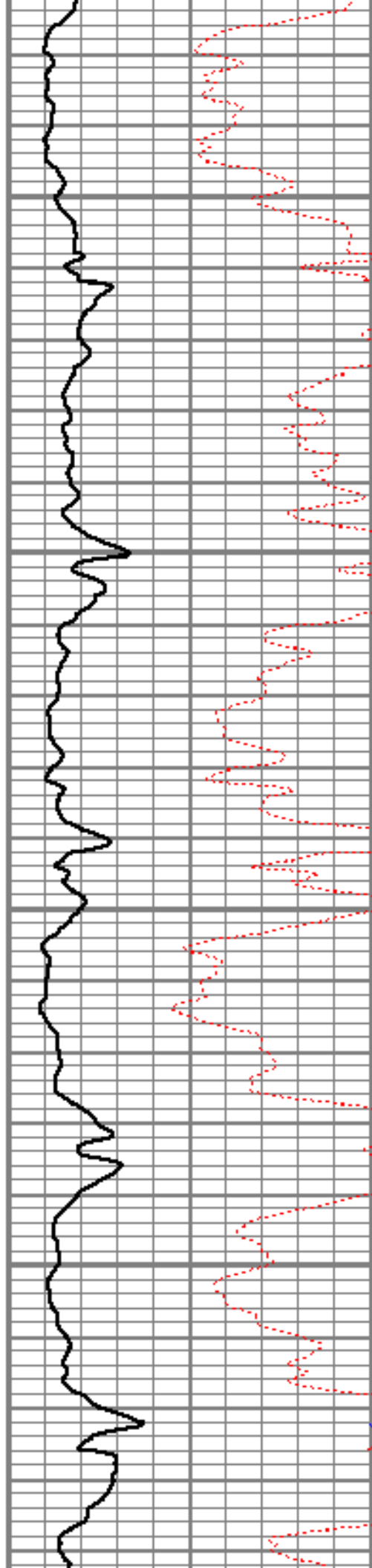


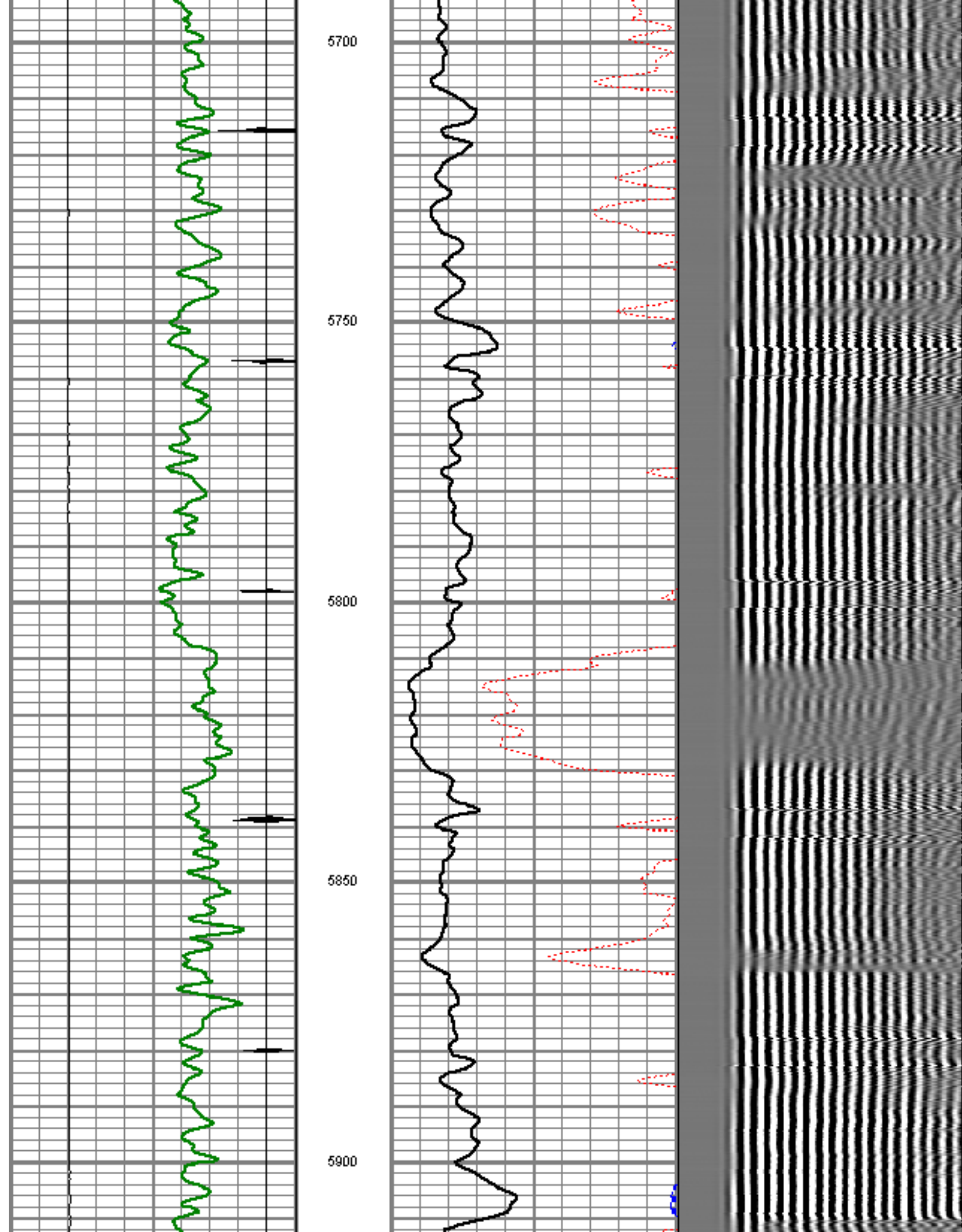
5500

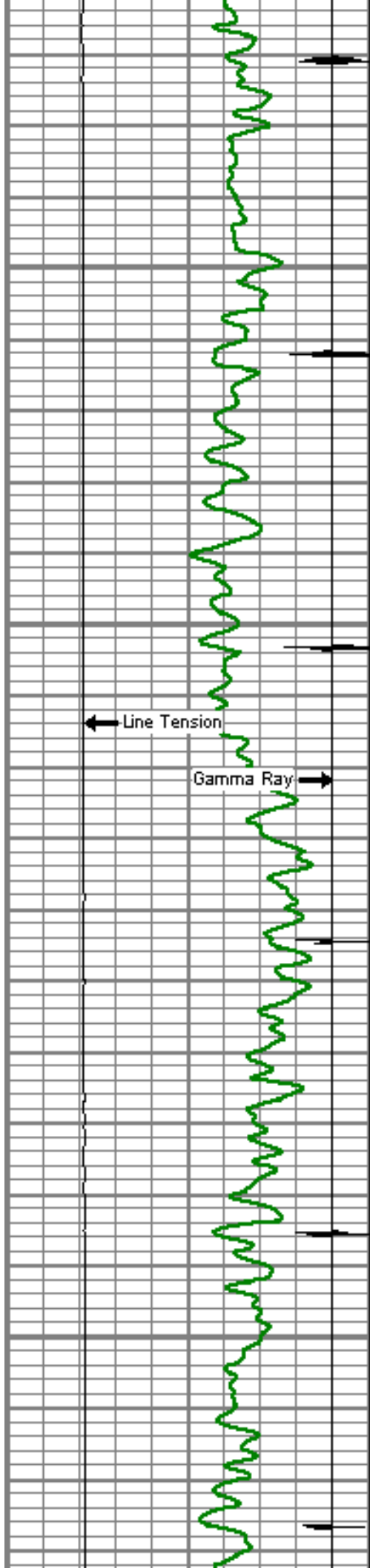
5550

5600

5650





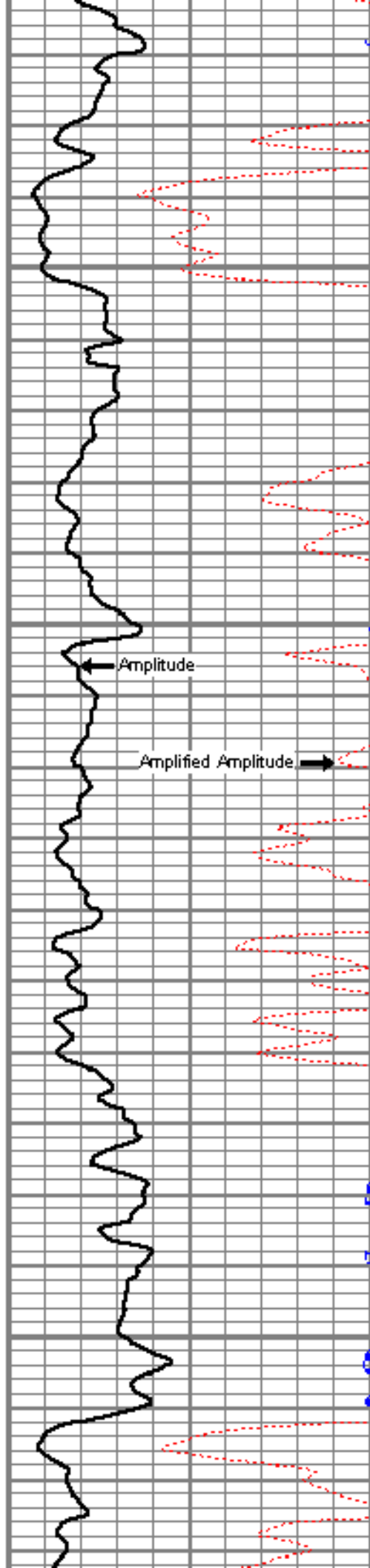


5950

6000
CCL

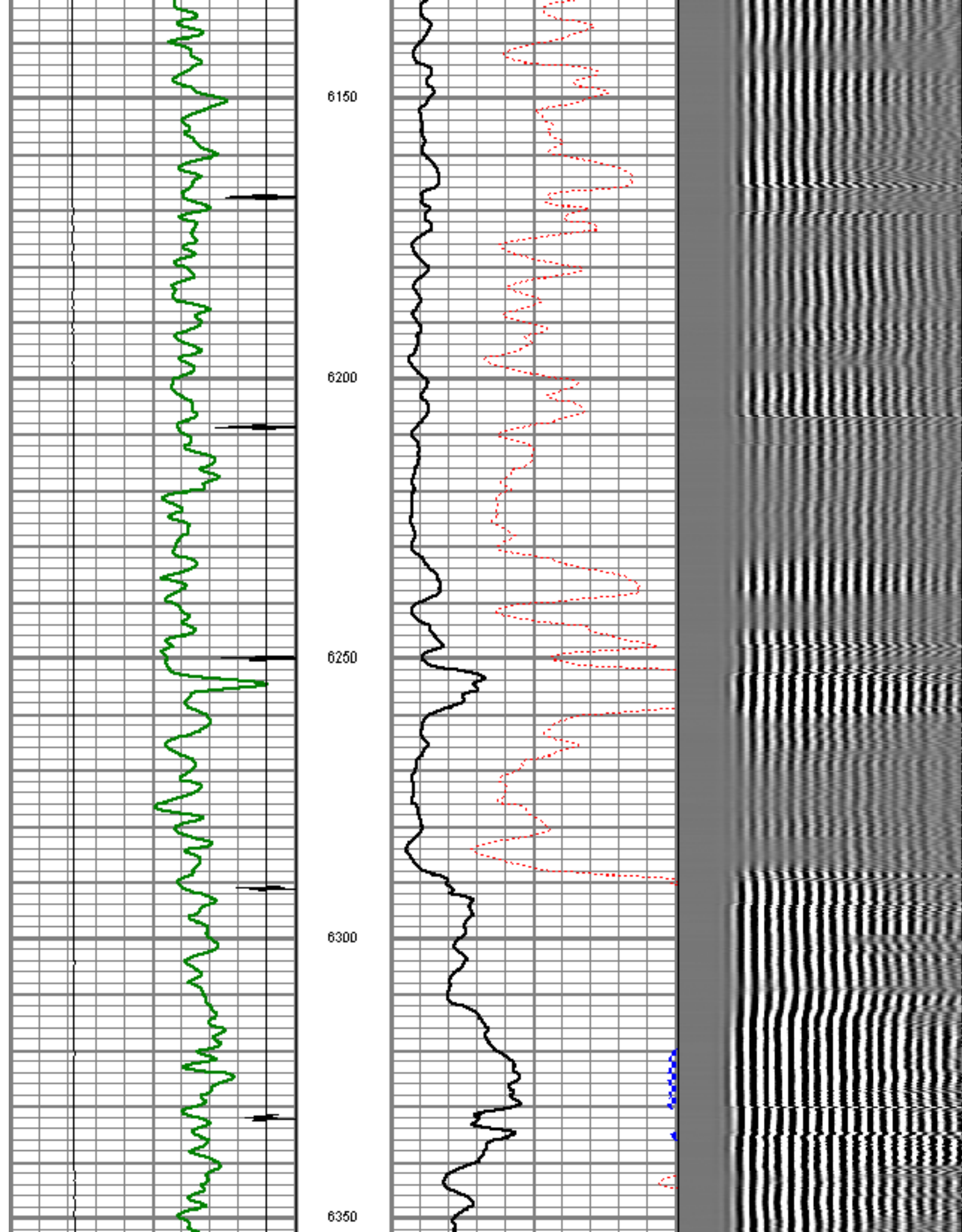
6050

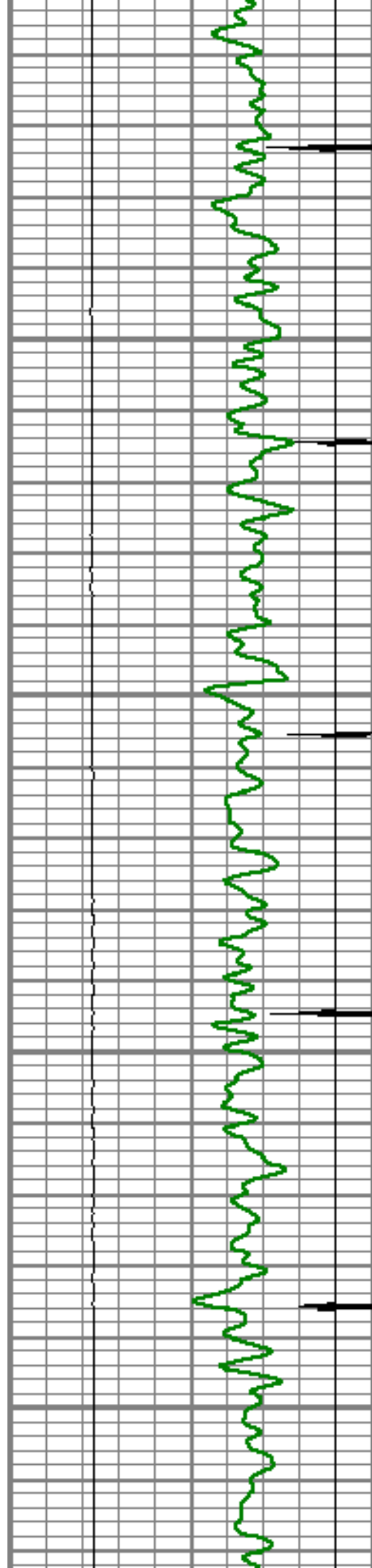
6100



Amplitude

Amplified Amplitude



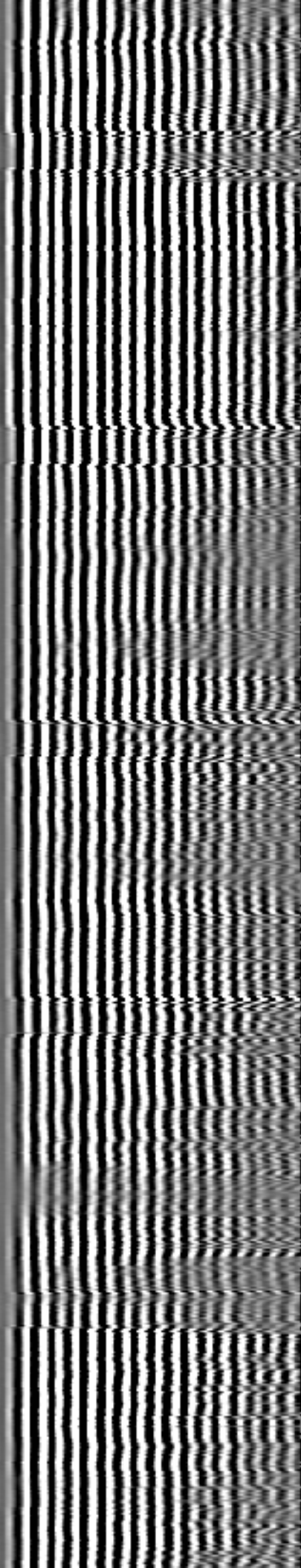
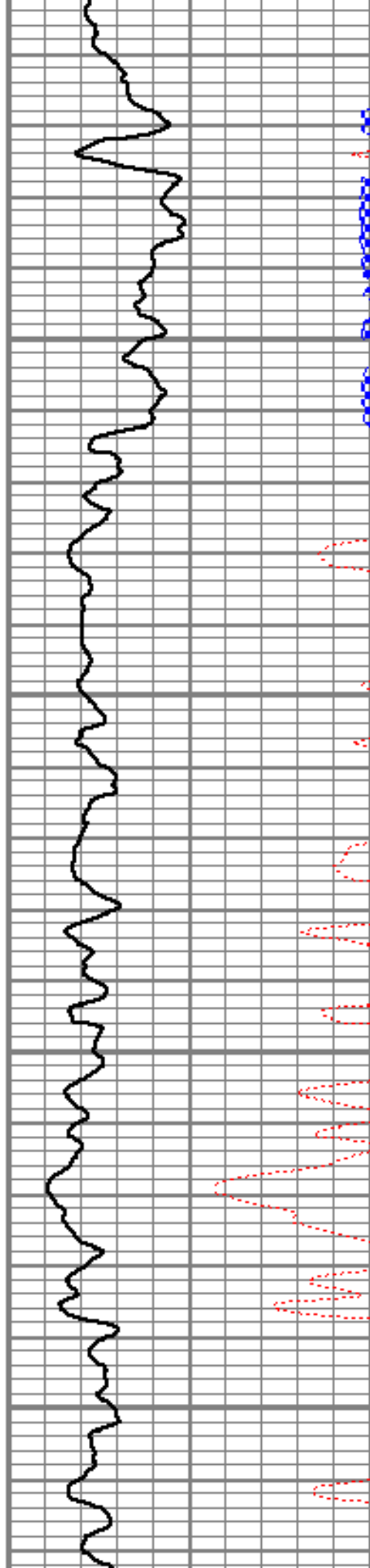


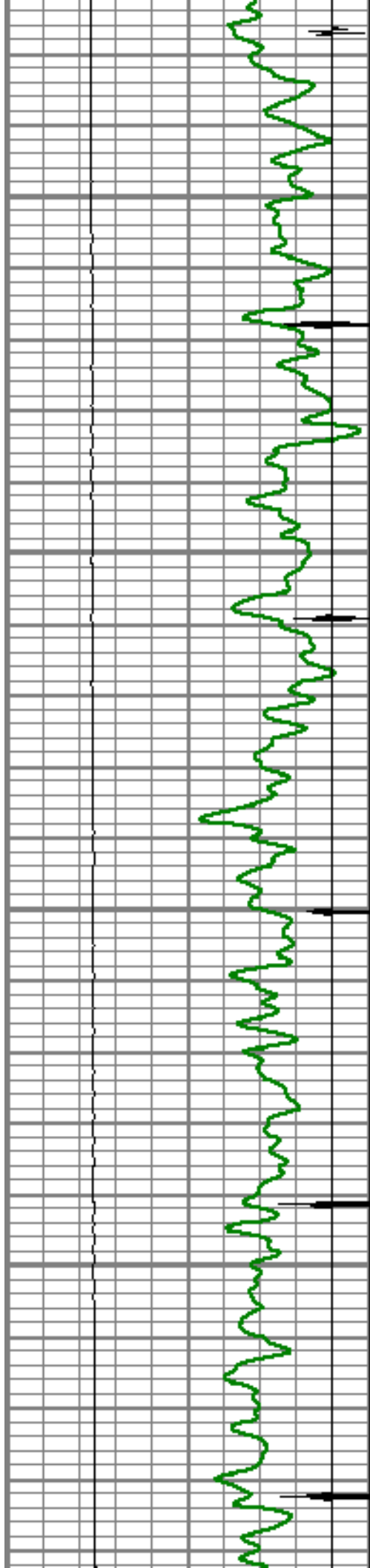
6400

6450

6500

6550



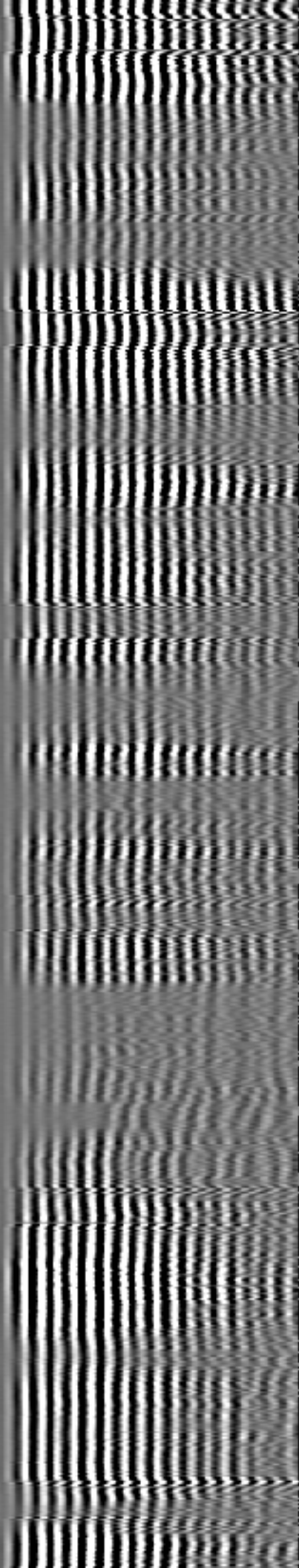
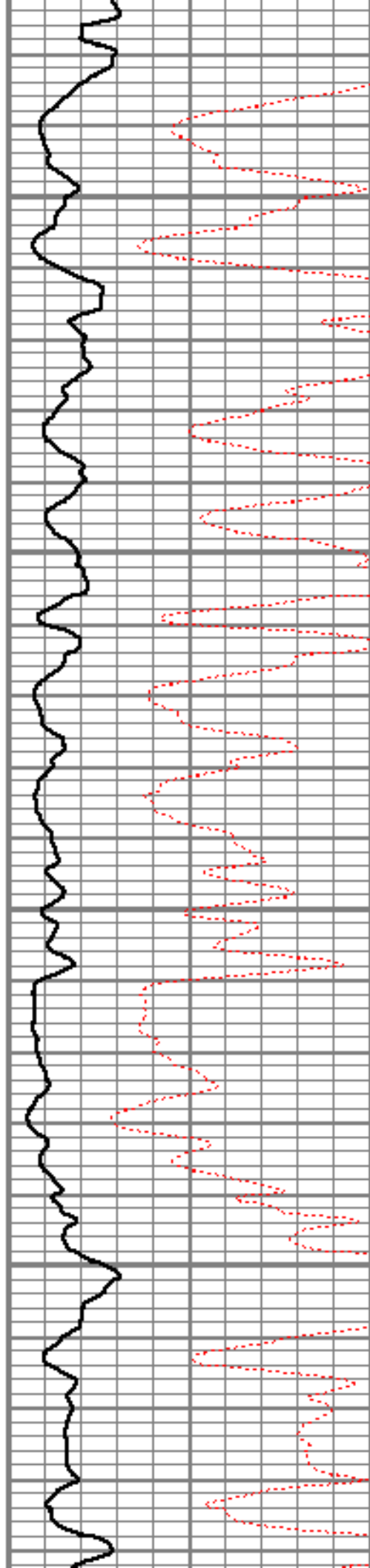


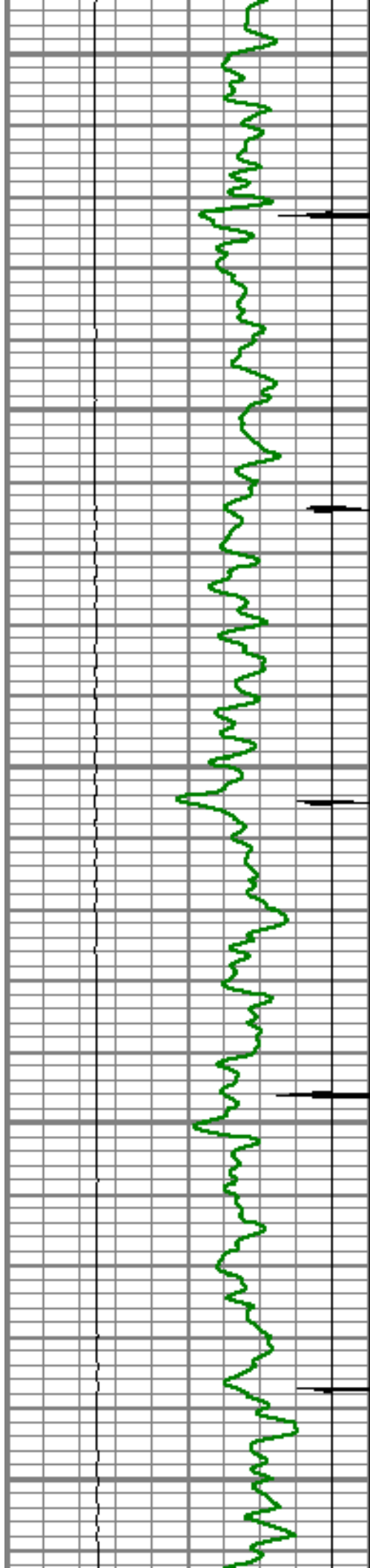
6600

6650

6700

6750





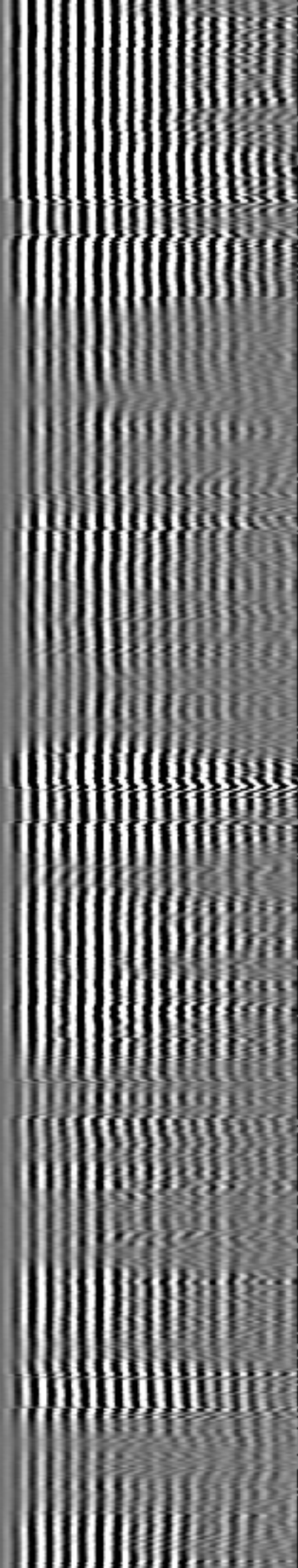
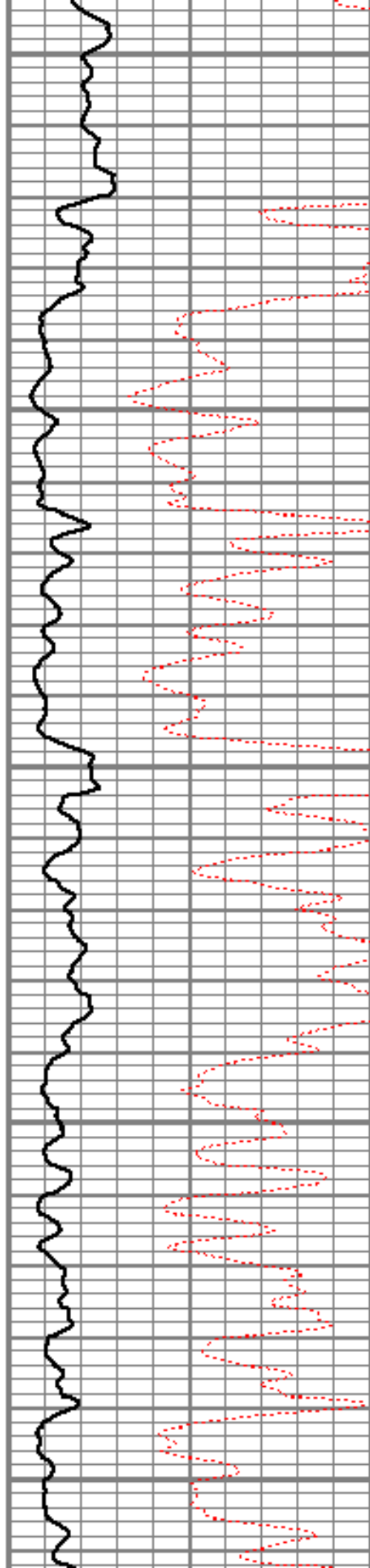
6800

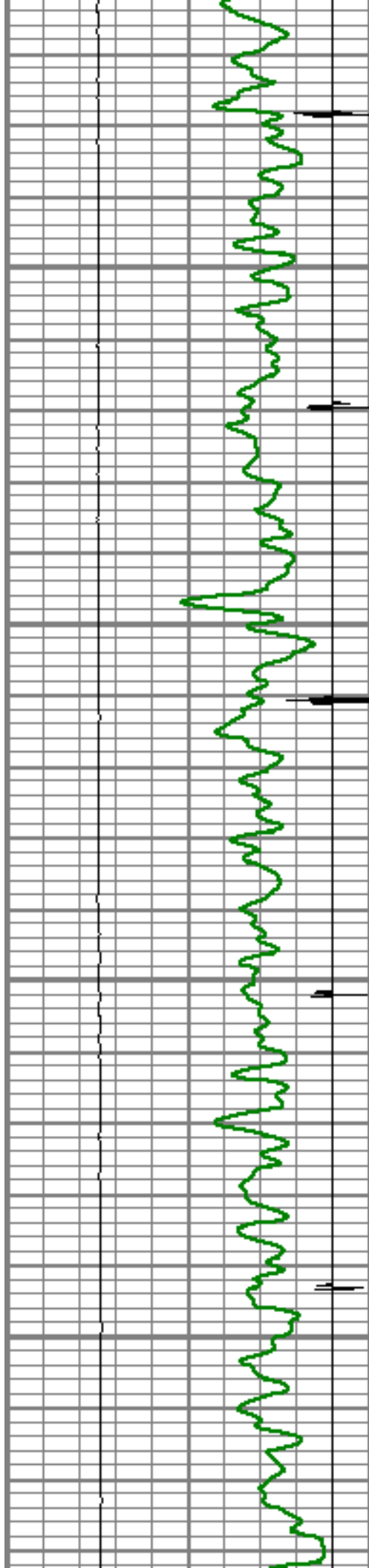
6850

6900

6950

7000



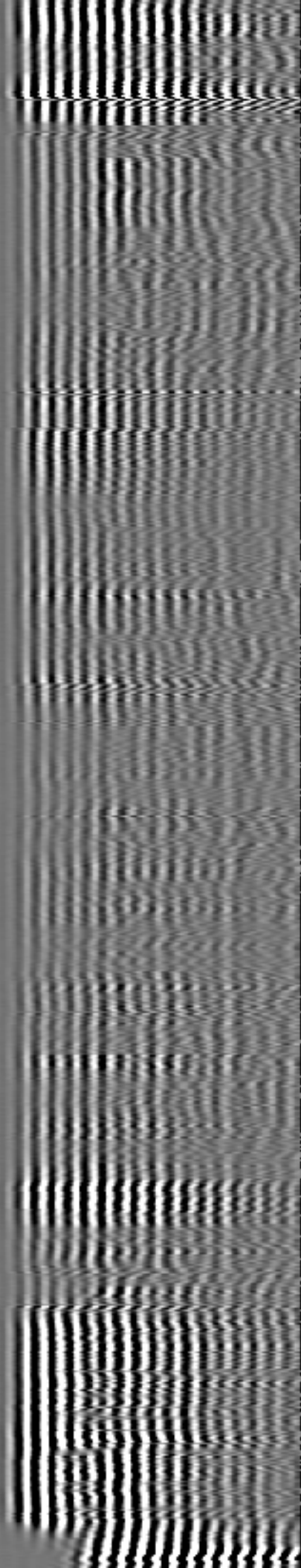
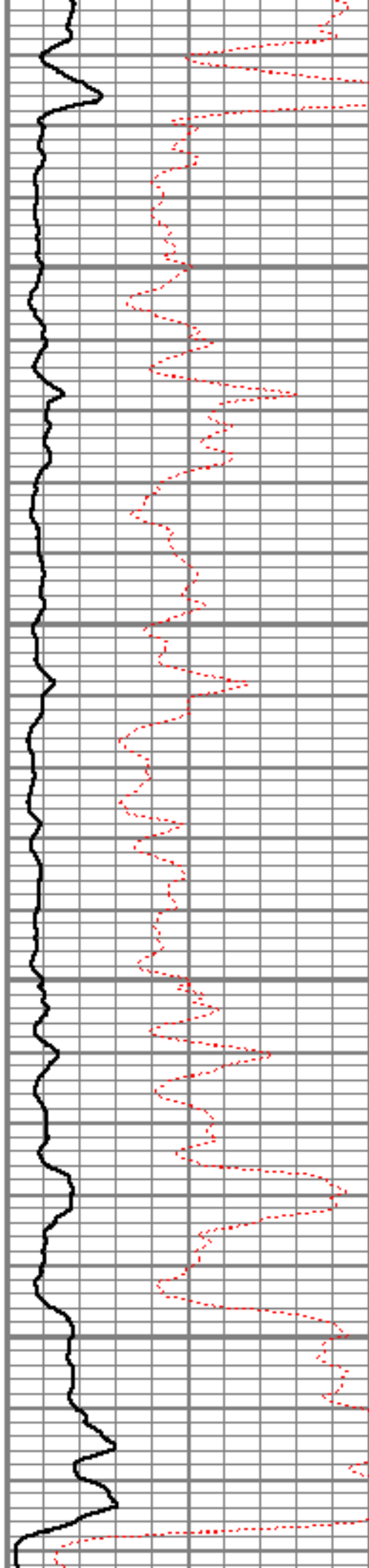


7050

7100

7150

7200





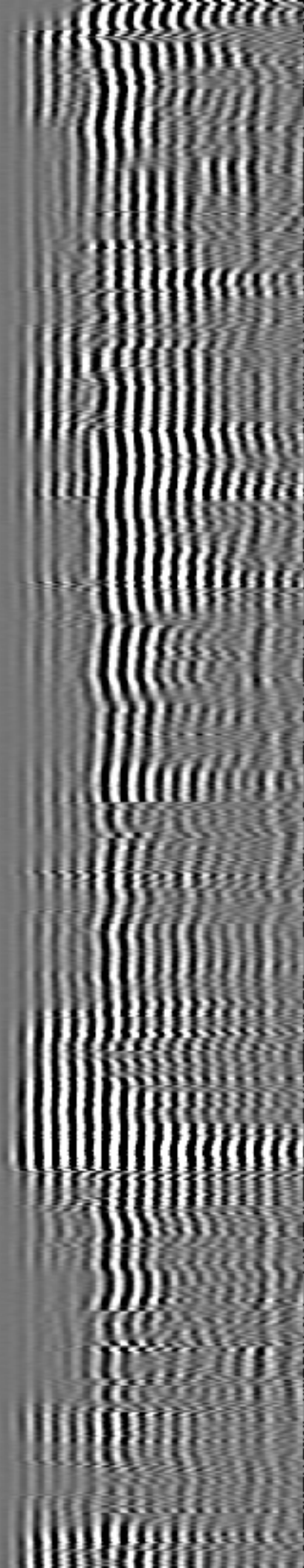
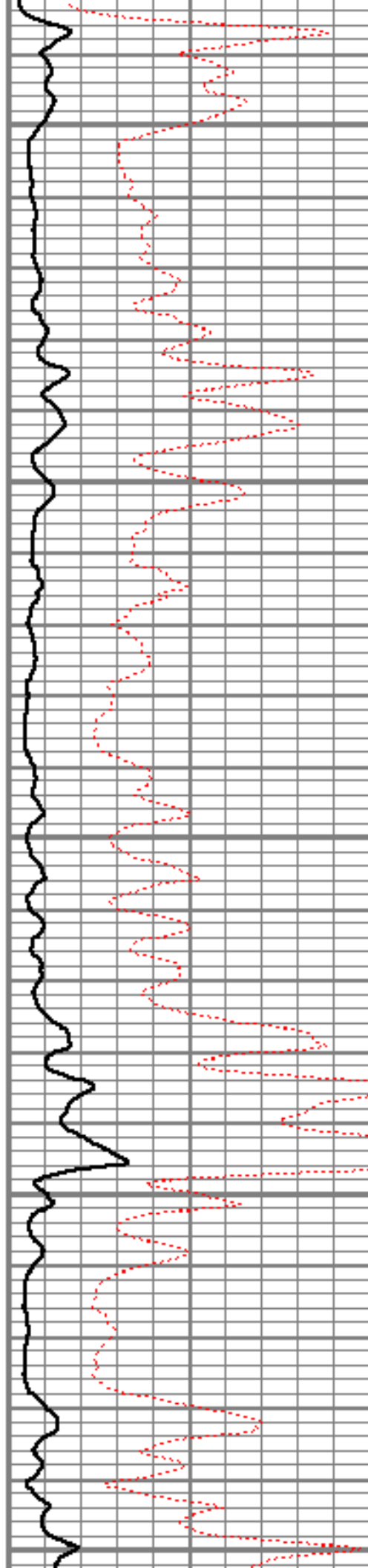
7250

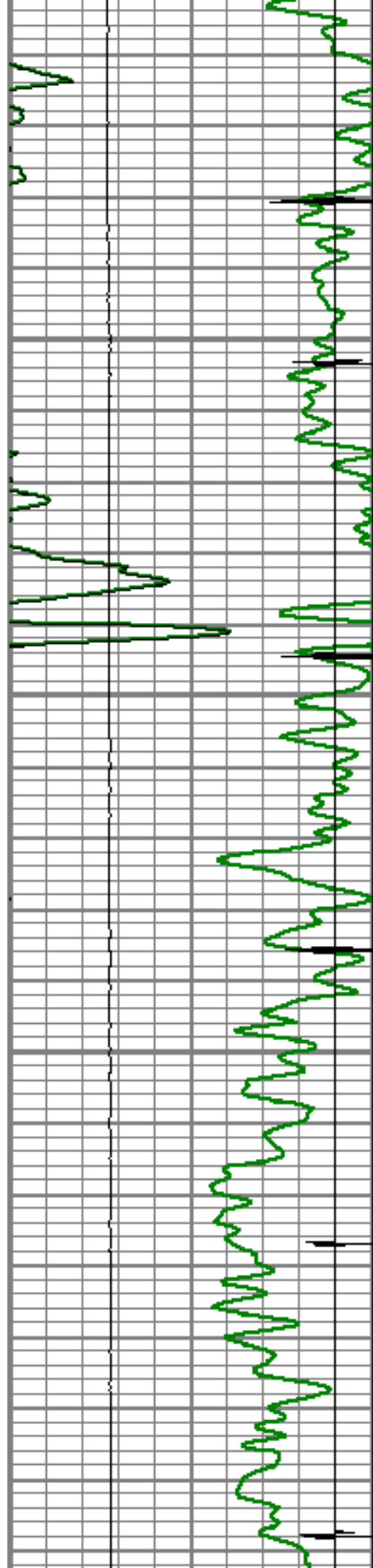
7300

7350

7400

7450





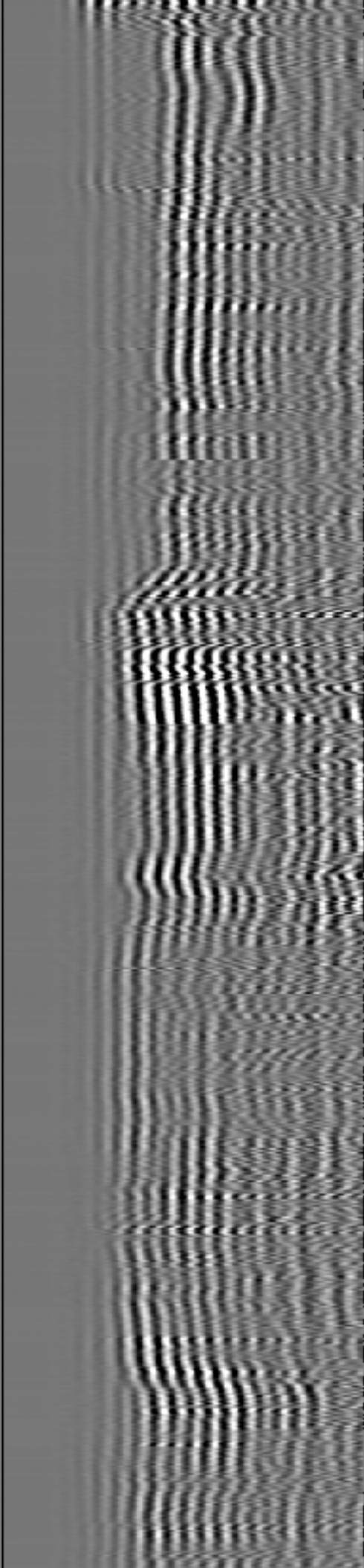
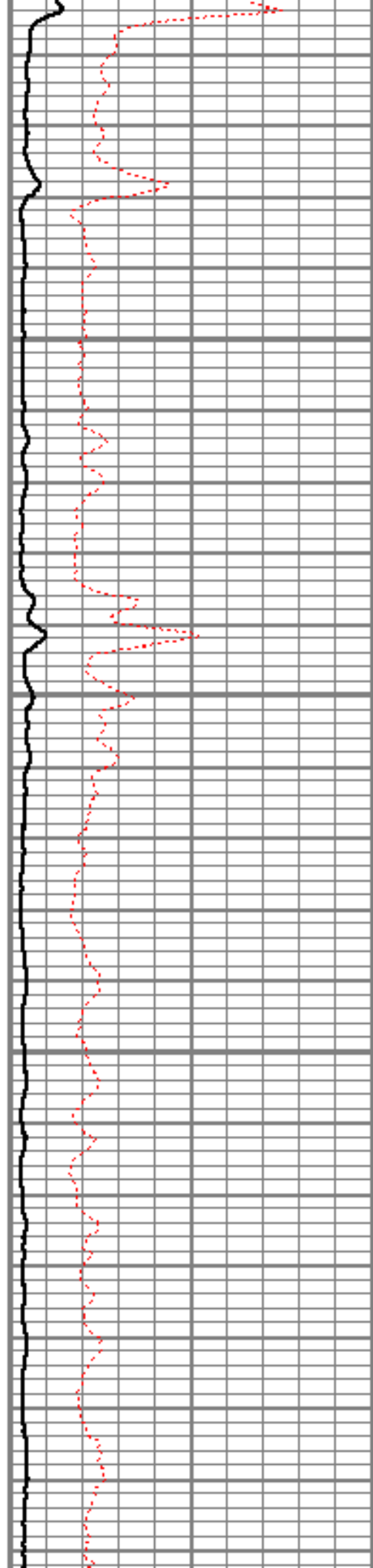
Short Joint

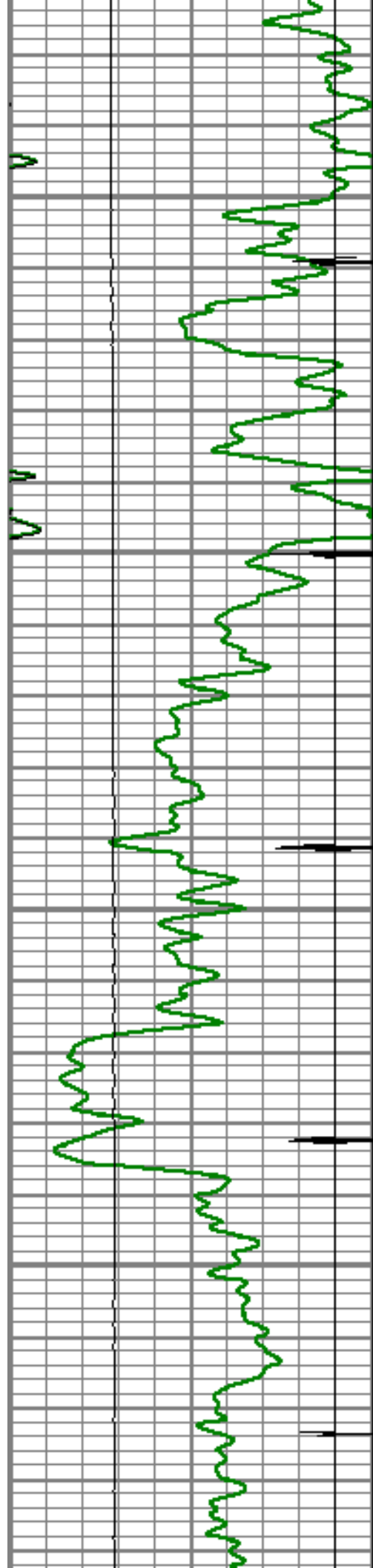
7500

7550

7600

7650



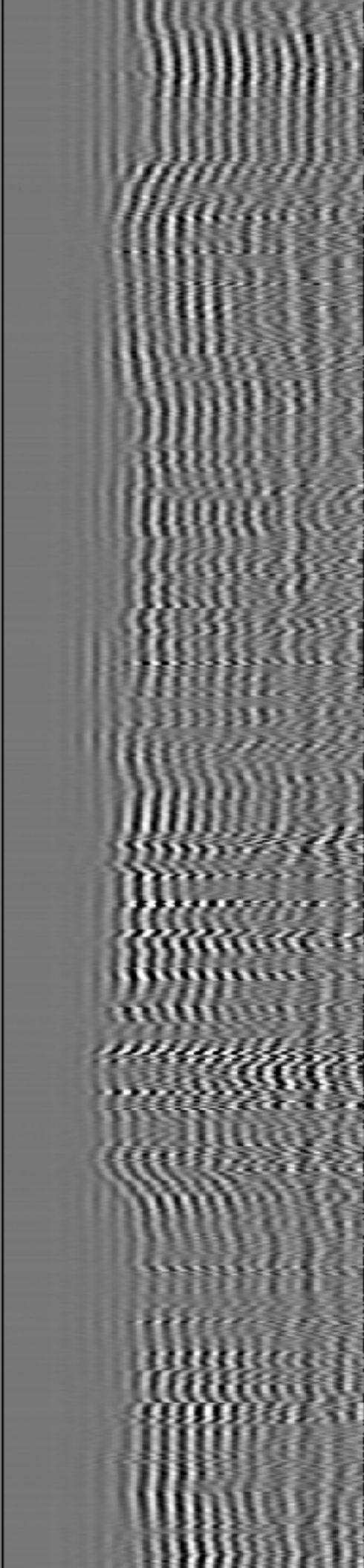
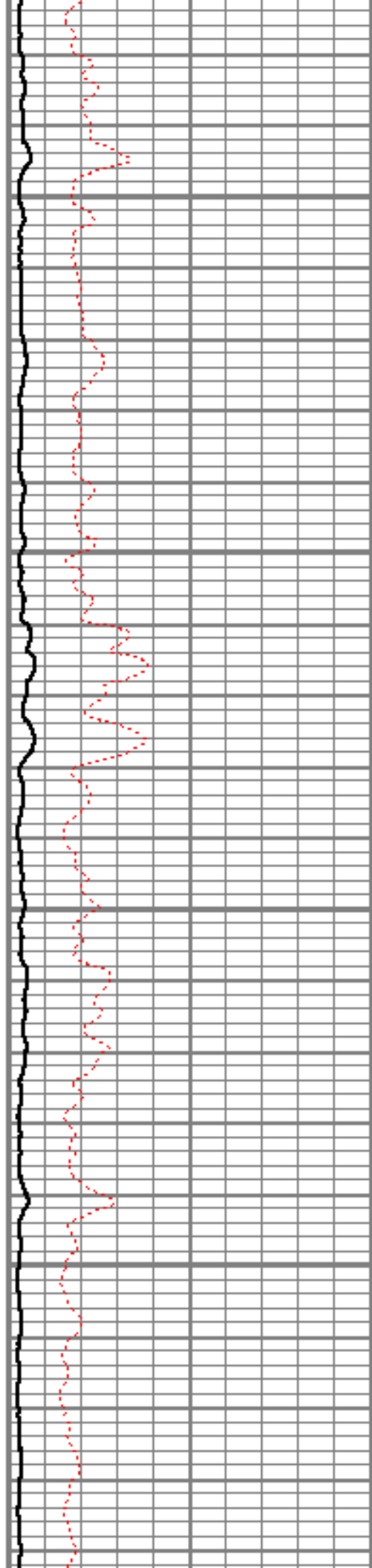


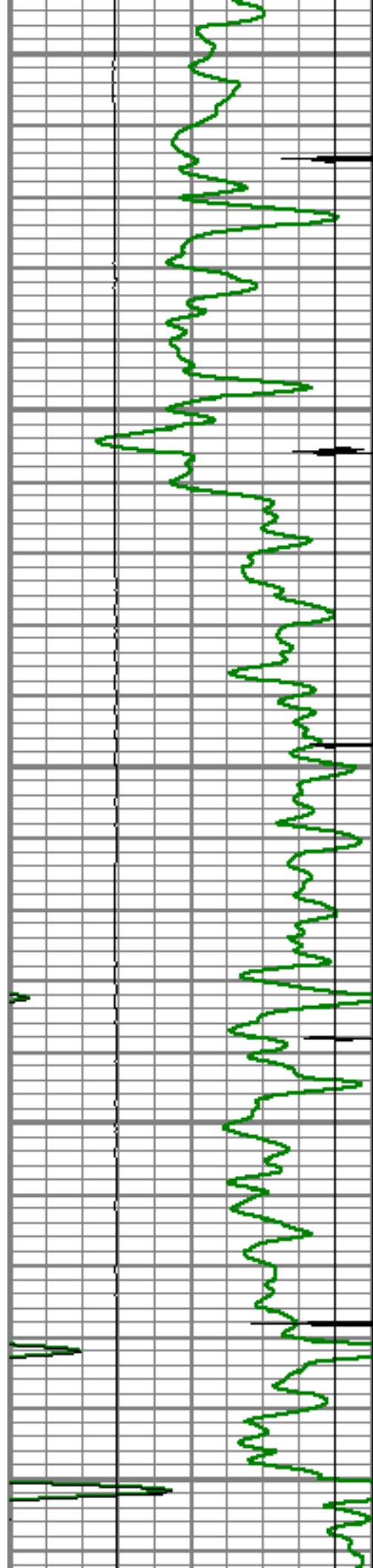
7700

7750

7800

7850





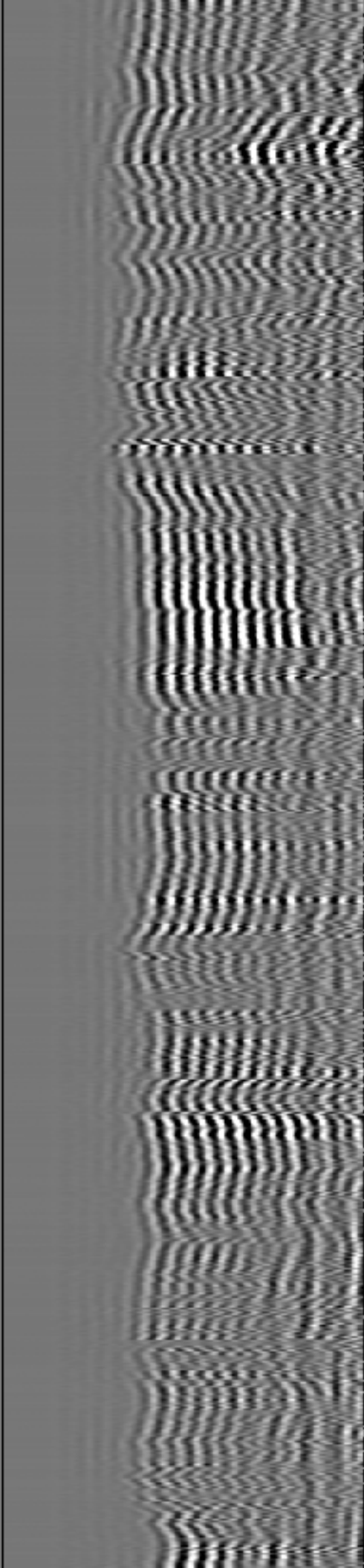
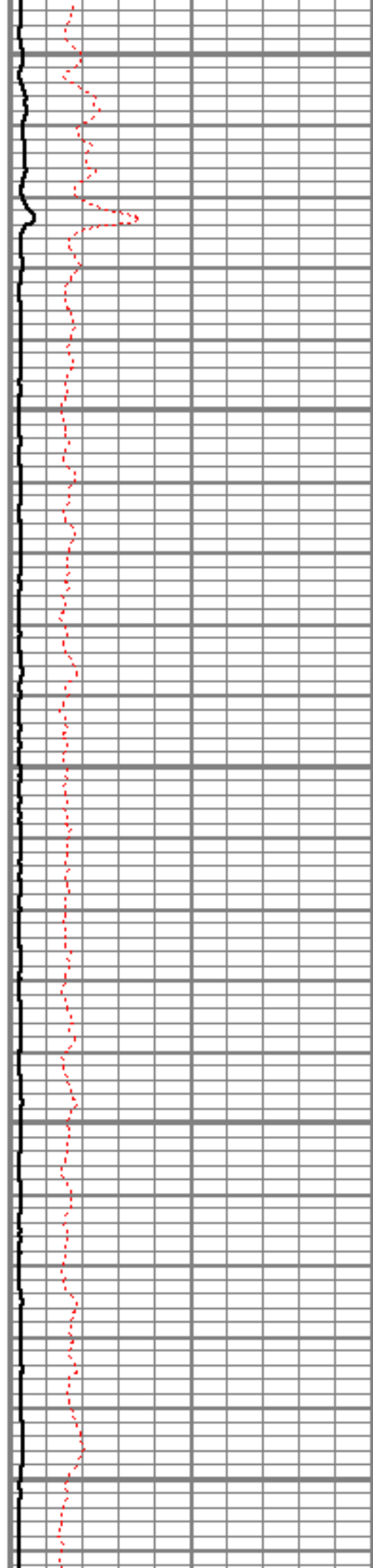
7900

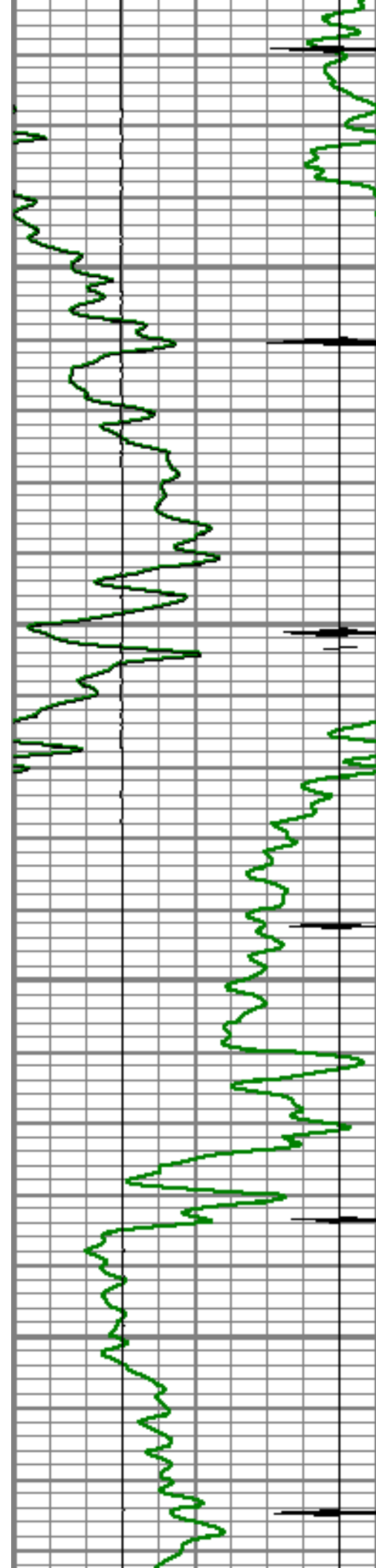
7950

8000

8050

8100



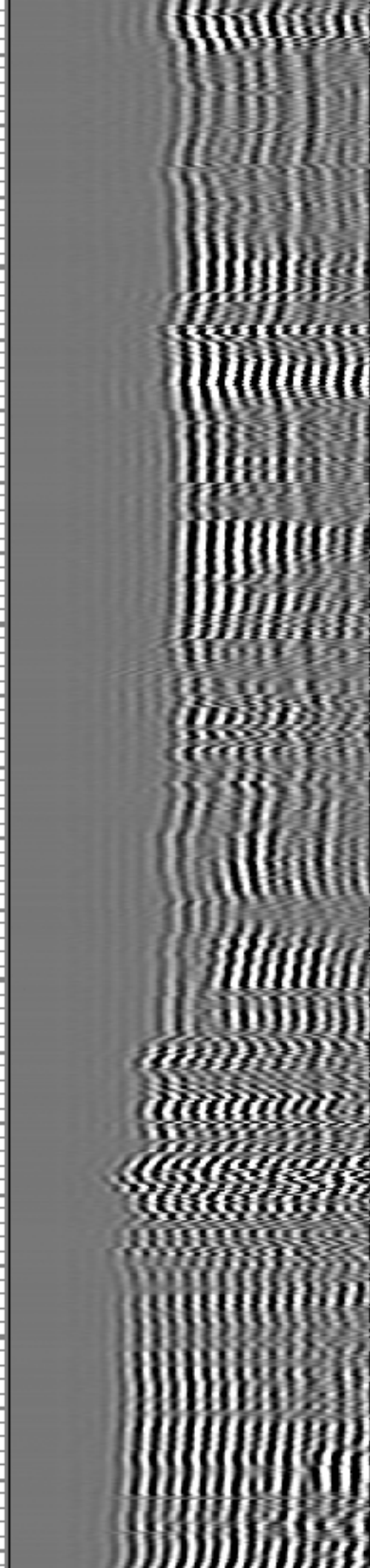
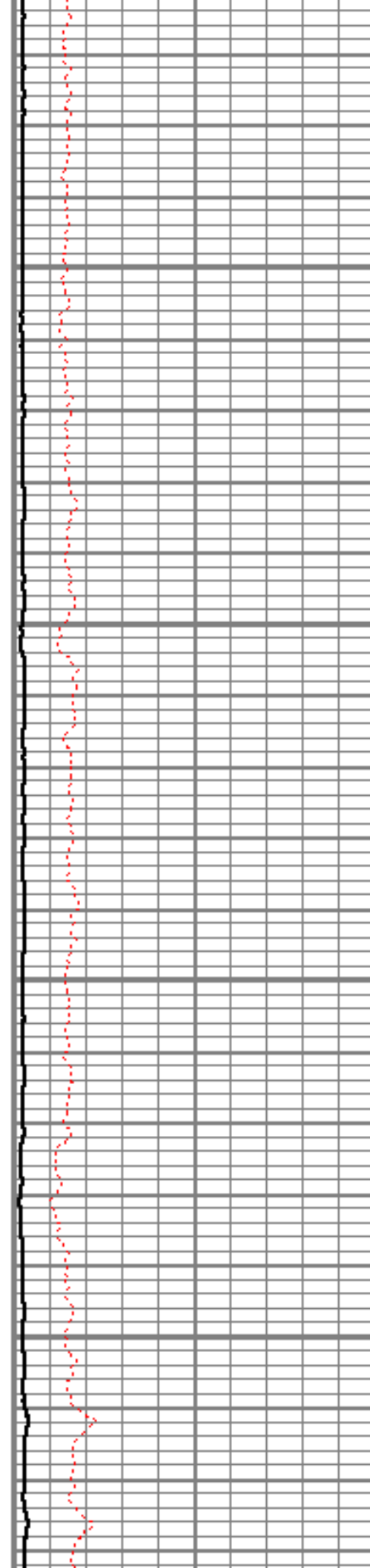


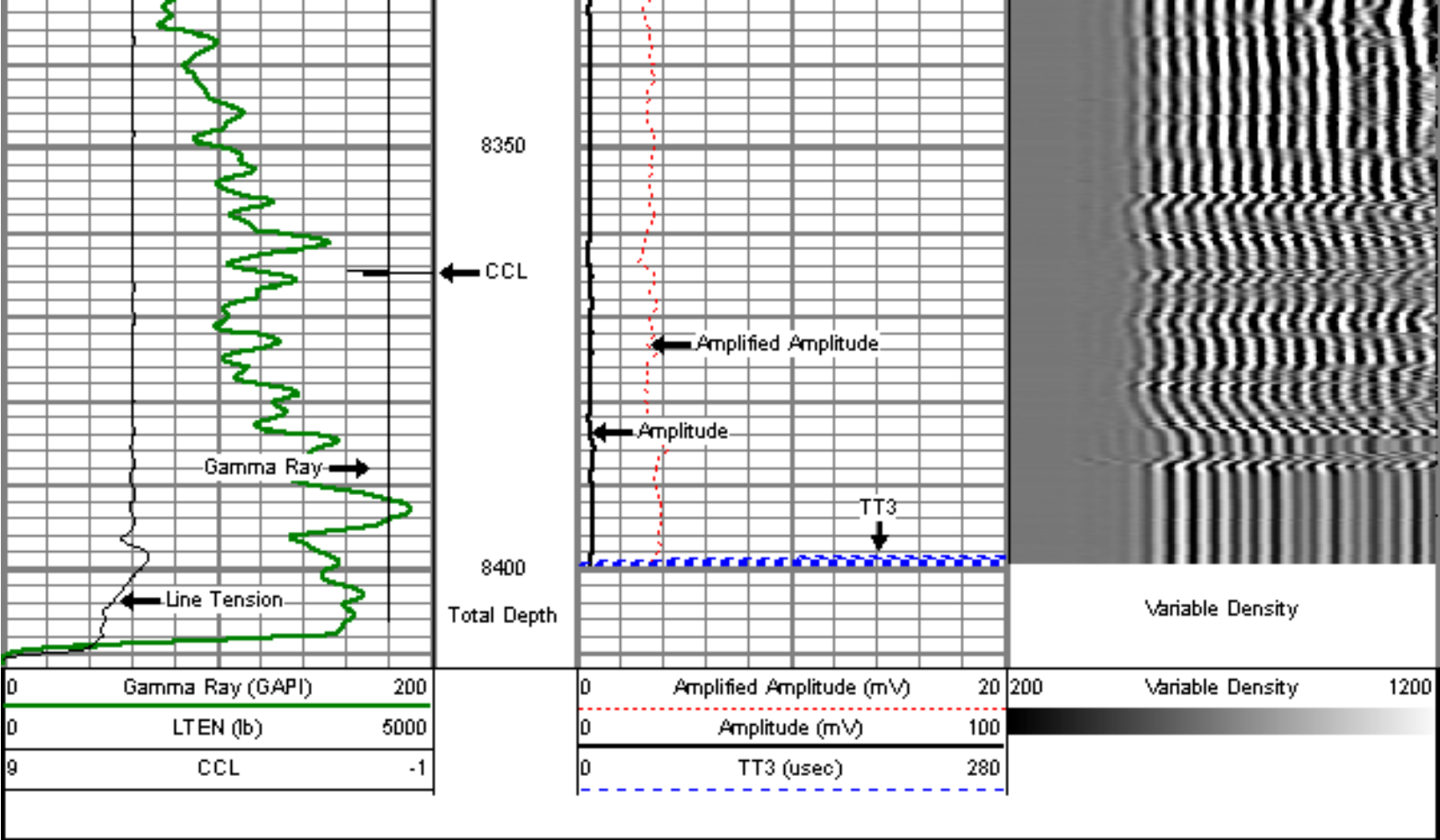
8150

8200

8250

8300





Sensor	Offset (ft)	Schematic	Description	Len (ft)	OD (in)	Wt (lb)
			titan	1.02	1.44	1.50
			Centralizer-Probe (CENT-PROBE-1) Probe Bowspring Centralizer	2.88	2.75	10.00
WVF3	11.67		CBL-Probe (DCBL_PRB_275_01) Probe 2.75" Dual Receiver Bond	8.77	2.75	60.00
WVF5	10.67					

