



# CEMENT BOND LOG

Mesa Wireline

Company ENCANA OIL & GAS (USA) INC		Company ENCANA OIL & GAS (USA) INC	
Well RODMAN BRUNTZ 11-26		Well RODMAN BRUNTZ 11-26	
Field WATTENBERG		Field WATTENBERG	
County WELD		County WELD	
State COLORADO		State COLORADO	
Location: API #: 5-123-32172-0000		Other Services	
SHL: 1619' FNL & 961' FWL BHL: 660' FNL & 660' FWL SEC. 26 TWP. 2N RGE. 66W		NONE	
Permanent Datum GROUND LEVEL Elevation 5075'		Elevation	
Log Measured From KELLY BUSHING = 12'		K.B. 5087'	
Drilling Measured From KELLY BUSHING		D.F. 5086'	
		G.L. 5075'	

Date	8 SEPTEMBER 2011									
Run Number	ONE									
Depth Driller	8251'									
Depth Logger	8210'									
Bottom Logged Interval	8210'									
Top Log Interval	4100'									
Open Hole Size	7.875"									
Type Fluid	WATER									
Density / Viscosity	~8.3#									
Max. Recorded Temp.	272 DEG F									
Estimated Cement Top	4320'									
Time Well Ready	N/A									
Time Logger on Bottom	N/A									
Equipment Number	10901 PRD01									
Location	AULT.CO									
Recorded By	V.FULLER									
Witnessed By	C.REYES									
Borehole Record					Tubing Record					
Run Number	Bit	From	To	Size	Weight	From	To			
ONE	12.25"	0'	1145'							
TWO	7.875"	0'	8267'							
Casing Record					Size	Wgt/Ft	Top	Bottom		
Surface String	8.625"				24#		0'	1133'		
Prot. String										
Production String	4.5"				11.6#		0'	8251'		
Liner										

<<< Fold Here >>>

All interpretations are opinions based on inferences from electrical or other measurements and we cannot and do not guarantee the accuracy or correctness of any interpretation, and we shall not, except in the case of gross or willful negligence on our part, be liable or responsible for any loss, costs, damages, or expenses incurred or sustained by anyone resulting from any interpretation made by any of our officers, agents or employees. These interpretations are also subject to our general terms and conditions set out in our current Price Schedule.

## Comments

LOG CORRELATED TO PSI HIGH RESOLUTION INDUCTION LOG DATED 17 AUGUST 2011  
SHORT JOINT 7254' - 7276'

WE APPRECIATE YOUR BUSINESS, MESA WIRELINE LLC, GRAND JUNCTION CO. (970) 257-0458



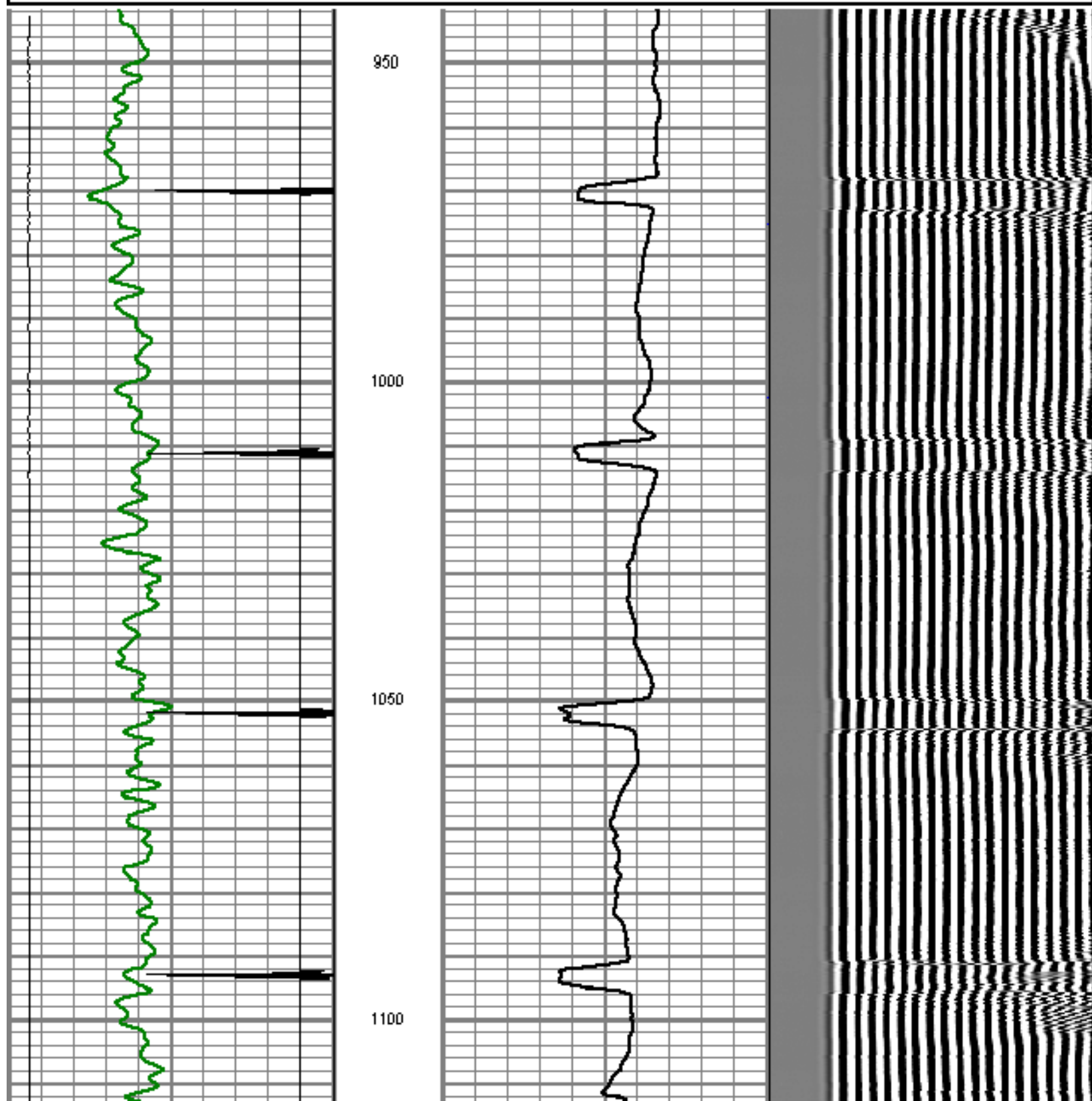
TOP PASS

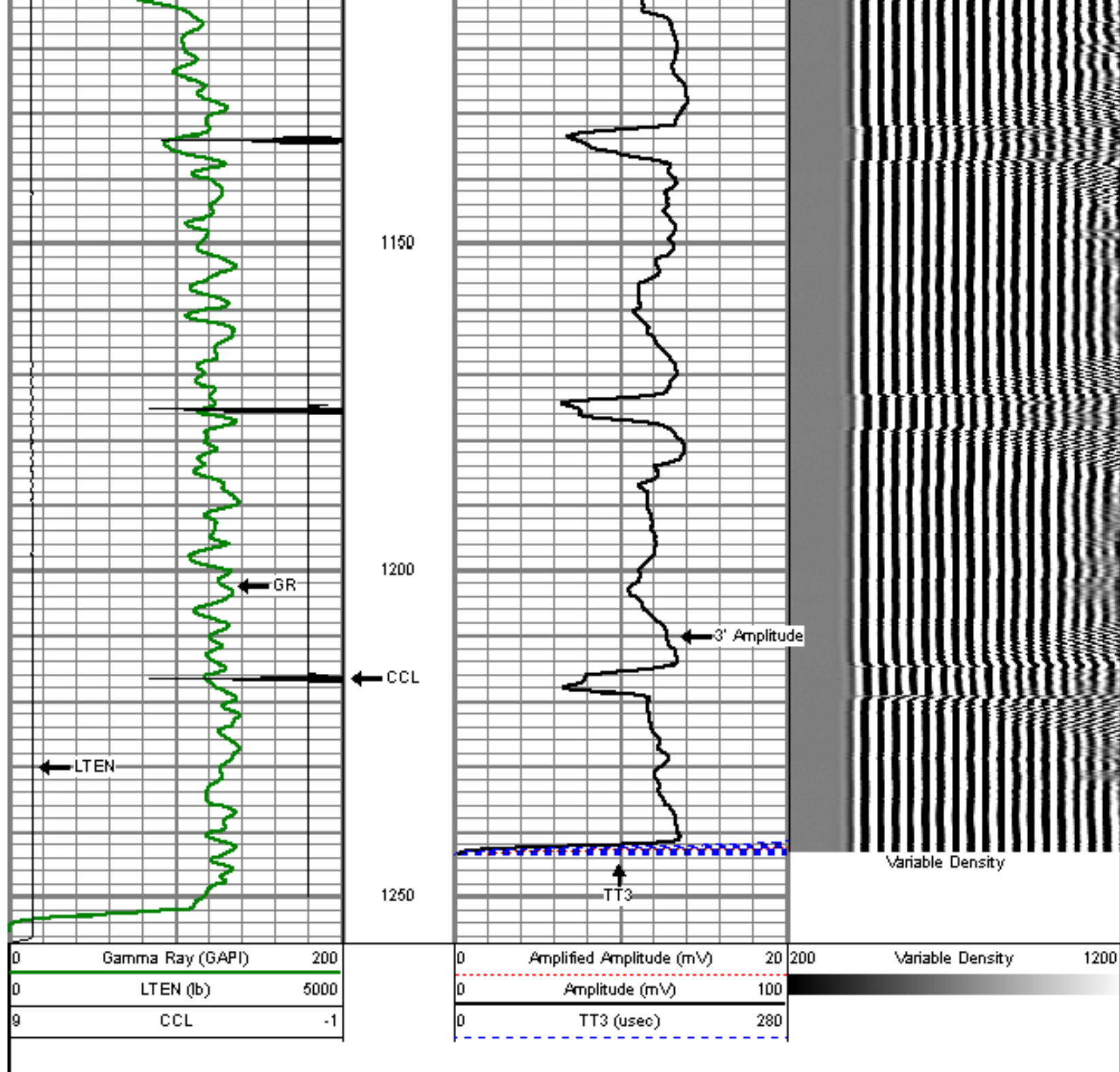
Database File: rodman bruntz 11-26.db  
Dataset Pathname: pass16  
Presentation Format: dcbl\_prb  
Dataset Creation: Thu Sep 08 14:04:58 2011 by Log SCH 110630  
Charted by: Depth in Feet scaled 1:240

0	Gamma Ray (GAPI)	200
0	LTEN (lb)	5000
9	CCL	-1

0	Amplified Amplitude (mV)	20
0	Amplitude (mV)	100
0	TT3 (usec)	280

200 Variable Density 1200

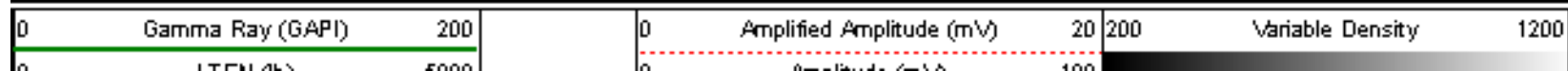




REPEAT PASS

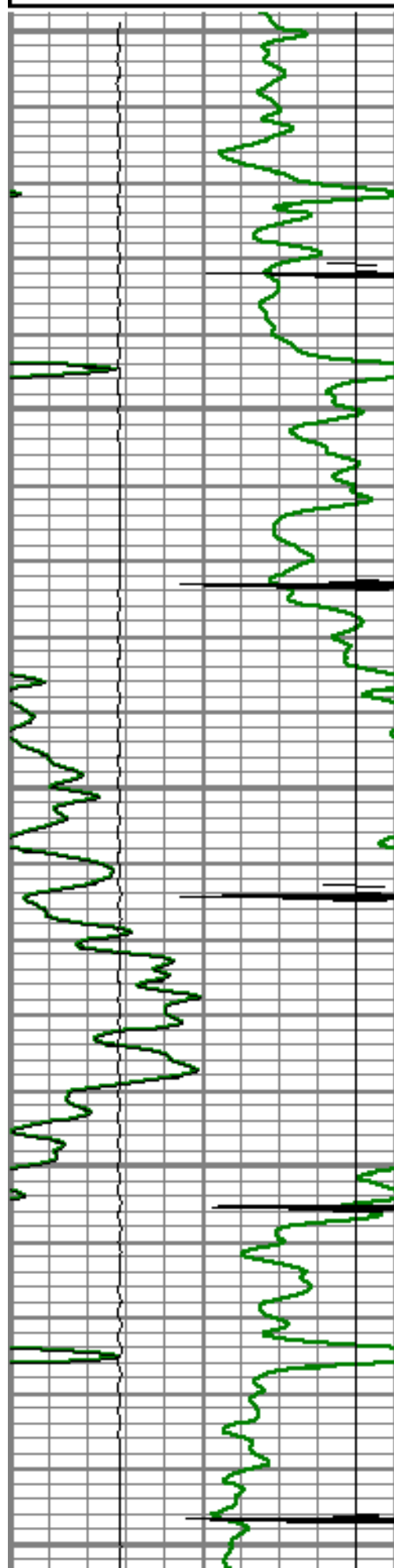
5" = 100'

Database File: rodman bruntz 11-26.db  
 Dataset Pathname: pass14  
 Presentation Format: dobl\_prb  
 Dataset Creation: Thu Sep 08 12:28:16 2011 by Log SCH 110630  
 Charted by: Depth in Feet scaled 1:240



0	LEN (m)	5000
9	CCL	-1

0	Amplitude (mV)	100
0	TT3 (usec)	280



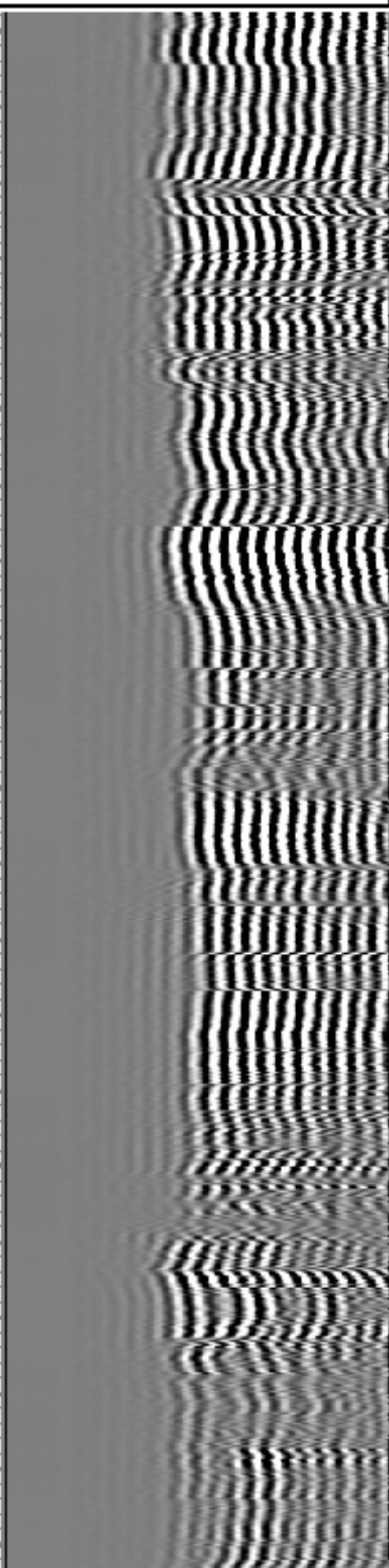
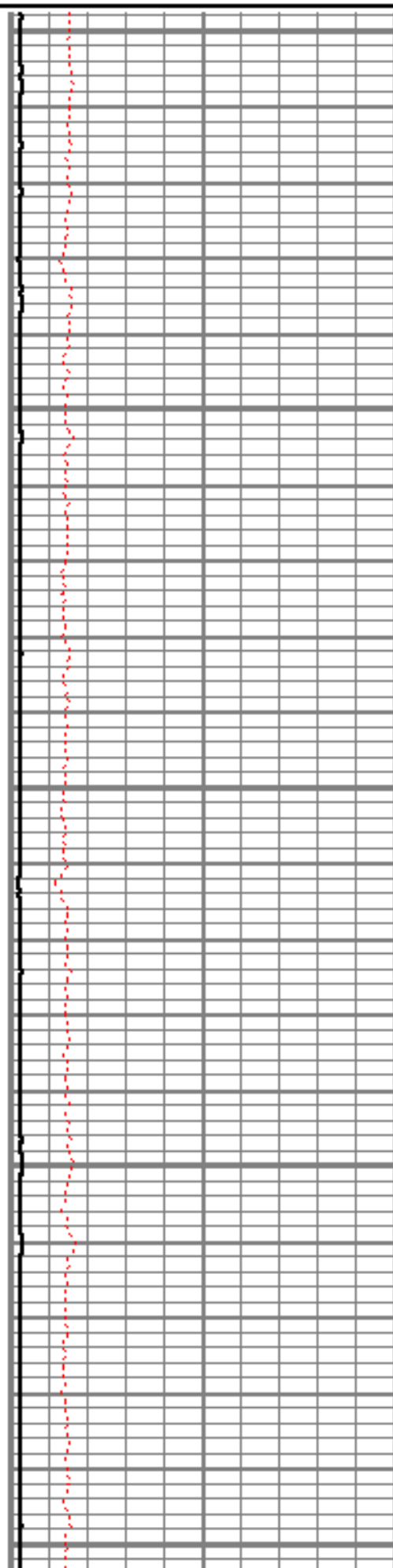
7900

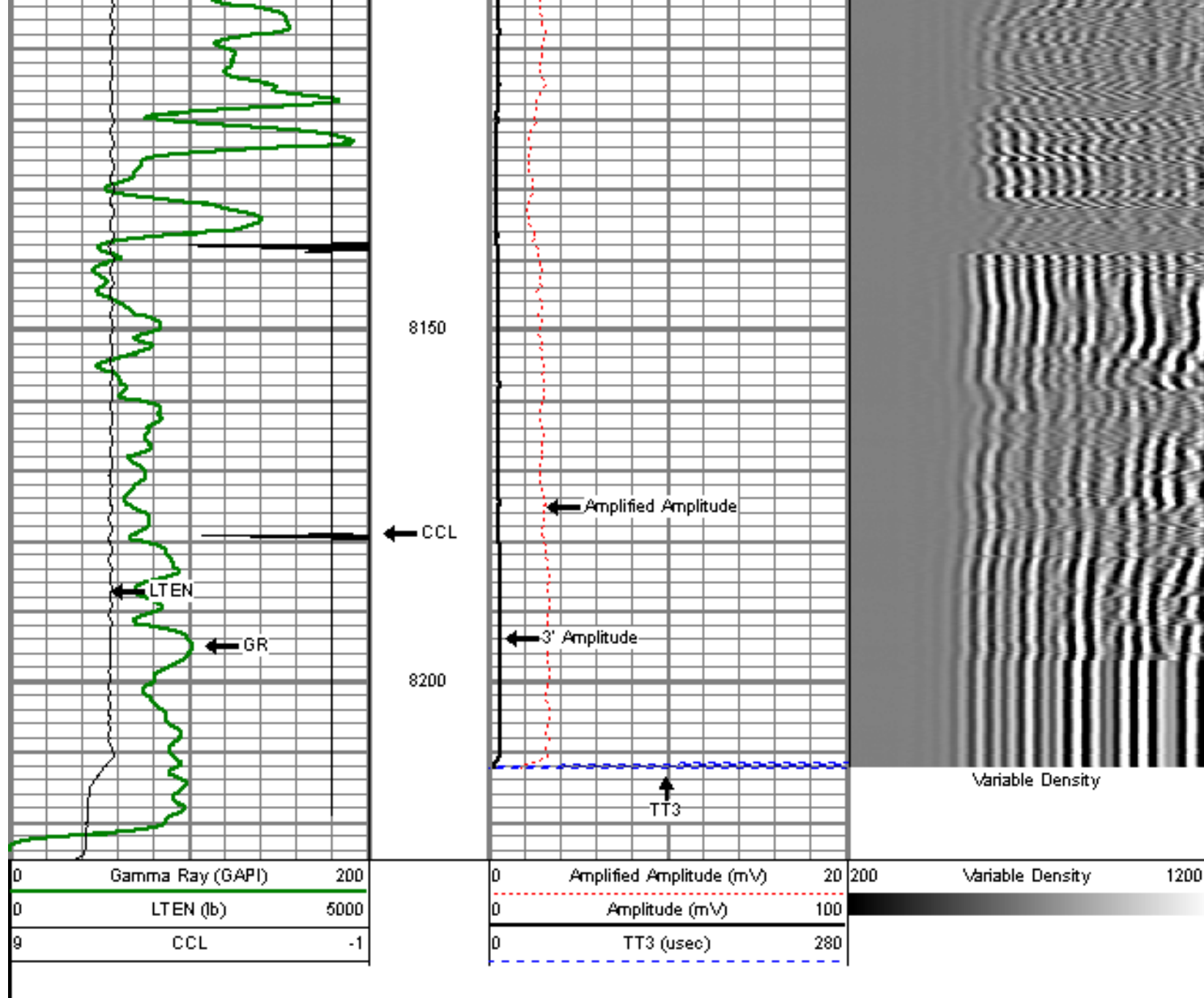
7950

8000

8050

8100

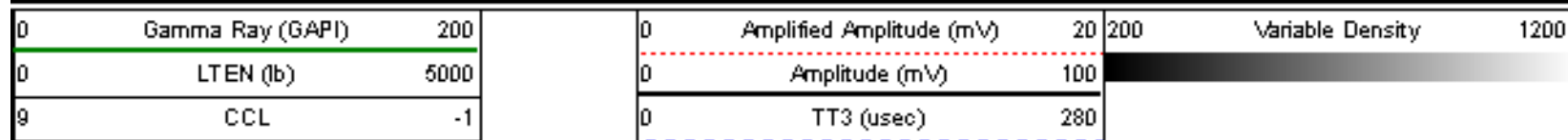




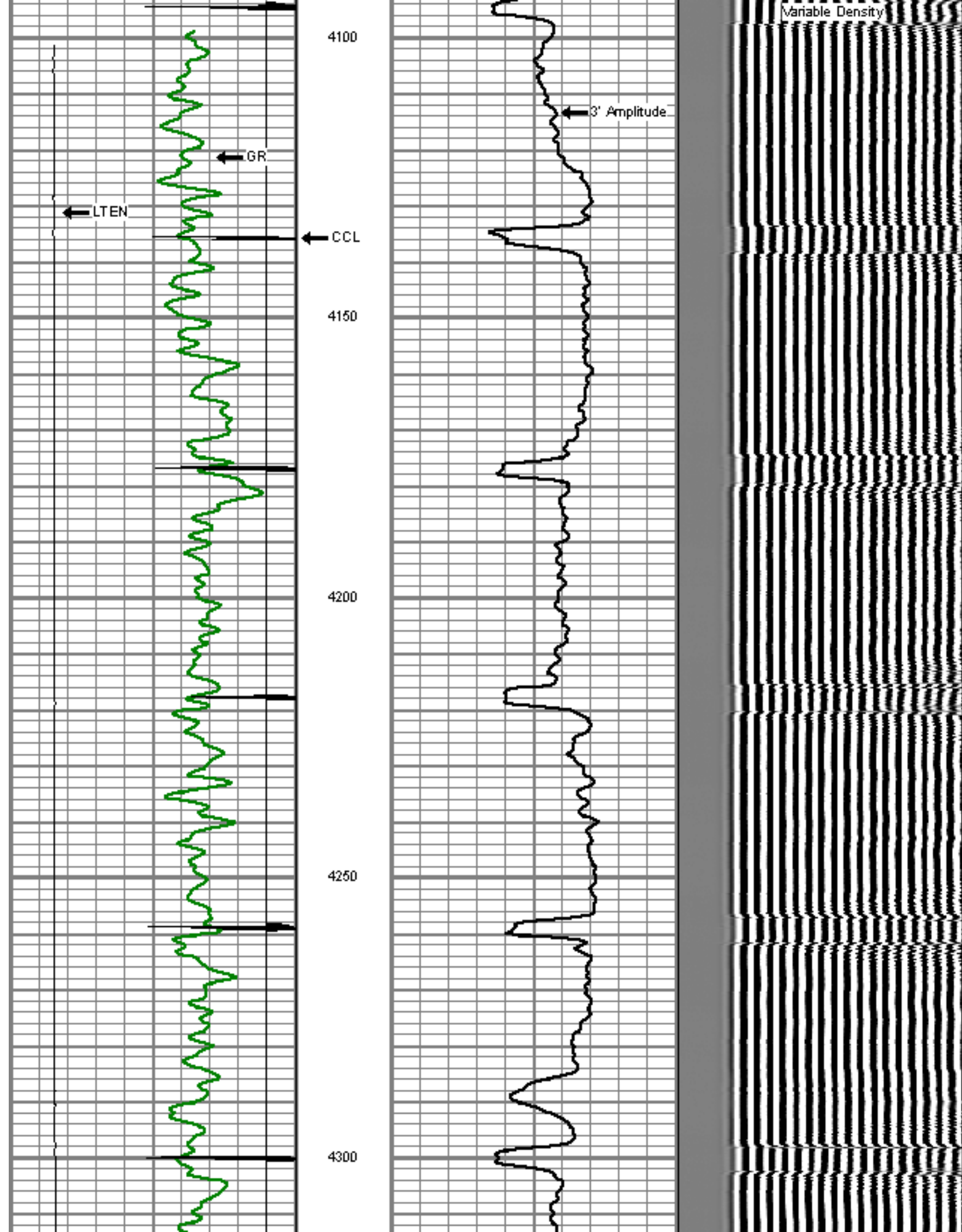
## MAIN PASS

5" = 100'

Database File: rodman bruntz 11-26.db  
 Dataset Pathname: pass150H  
 Presentation Format: dcbl\_prb  
 Dataset Creation: Thu Sep 08 13:55:53 2011  
 Charted by: Depth in Feet scaled 1:240







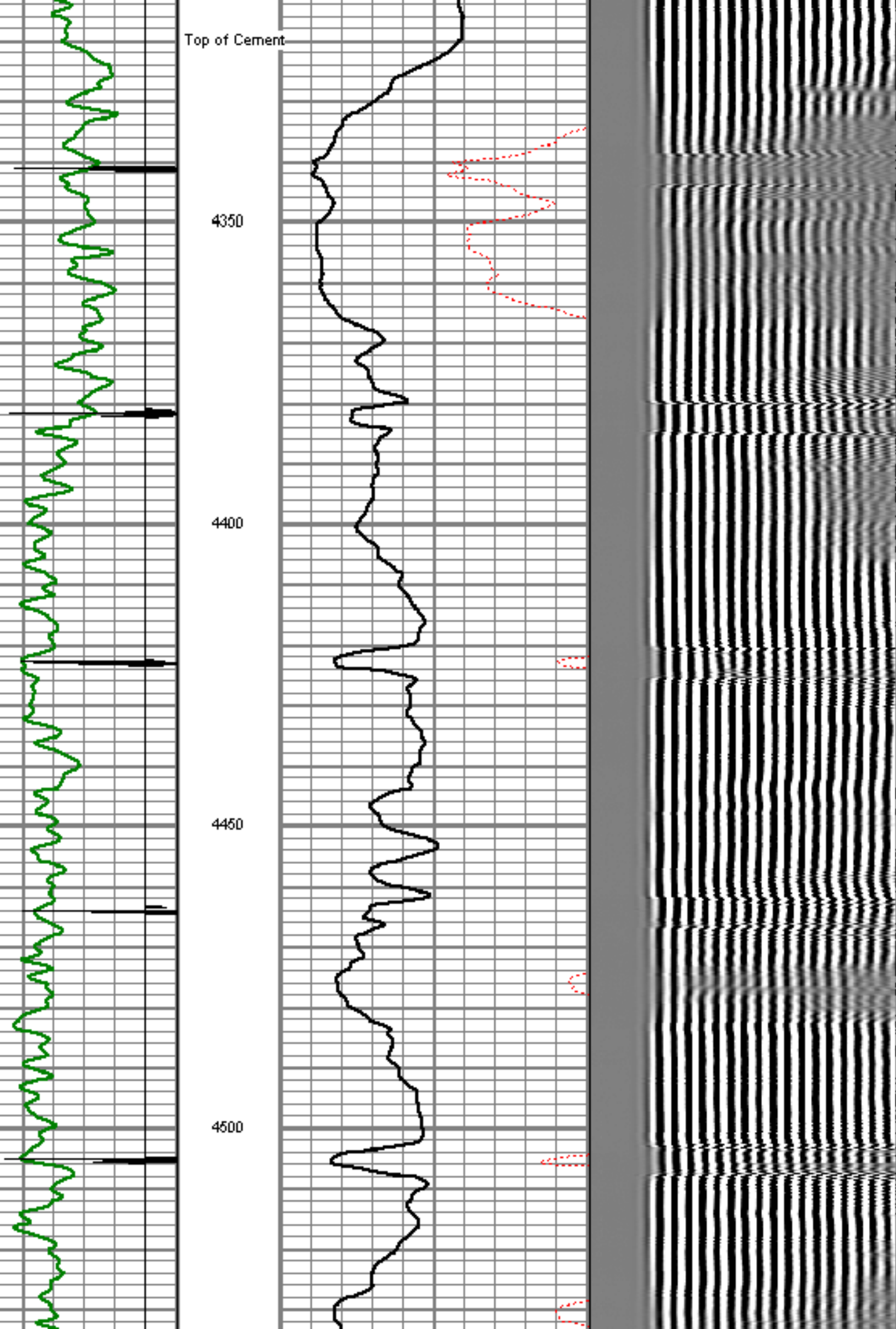
Top of Cement

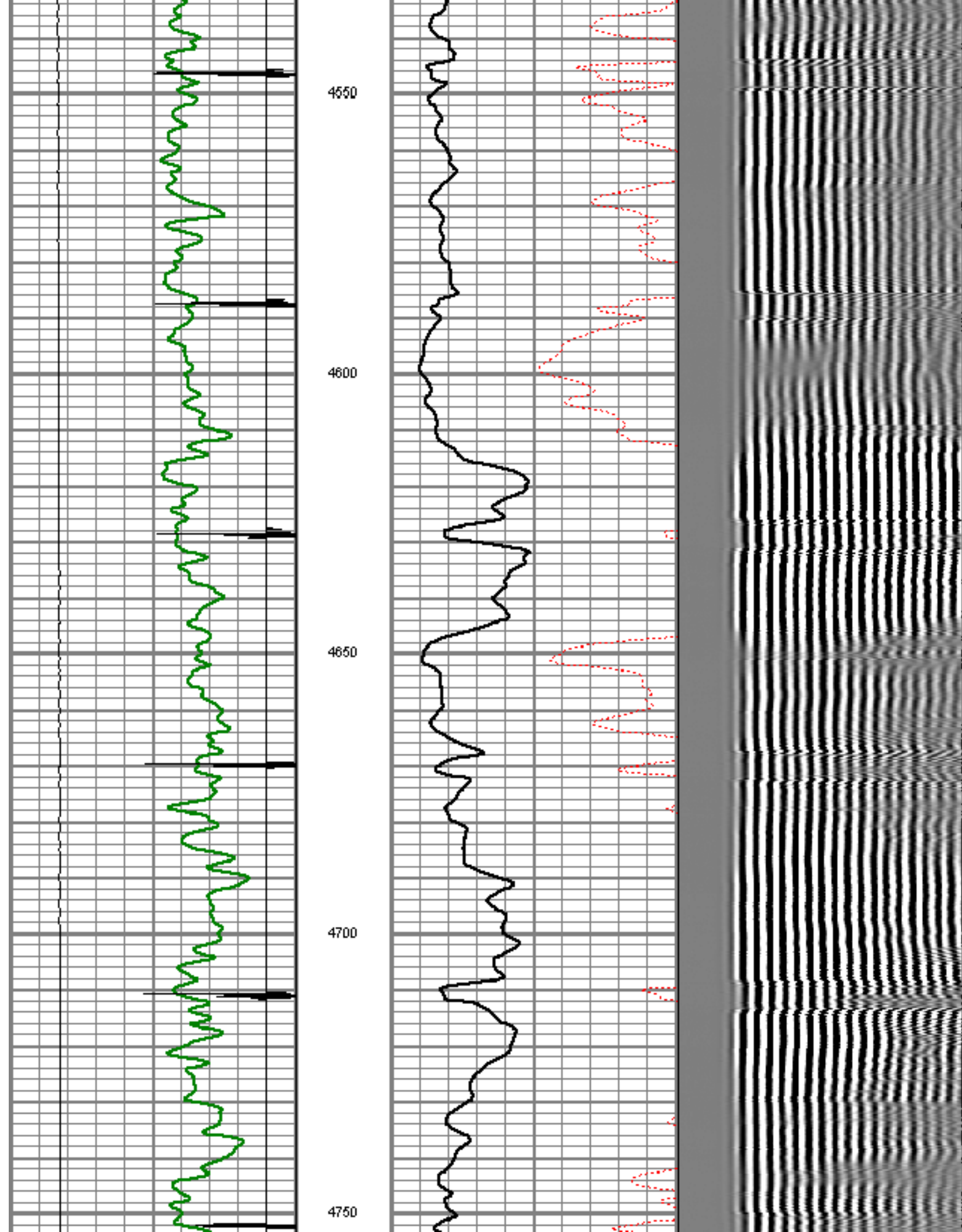
4350

4400

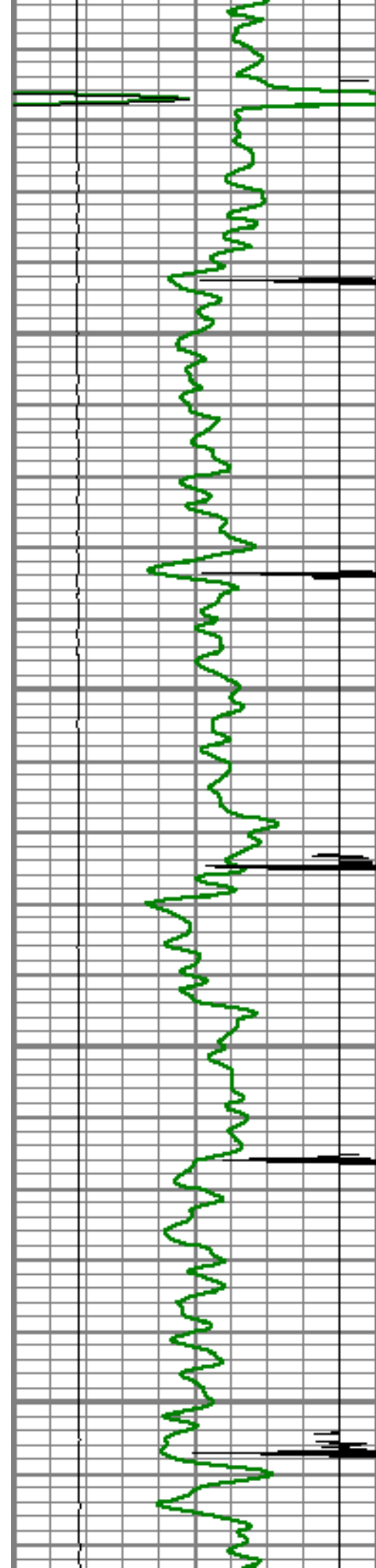
4450

4500







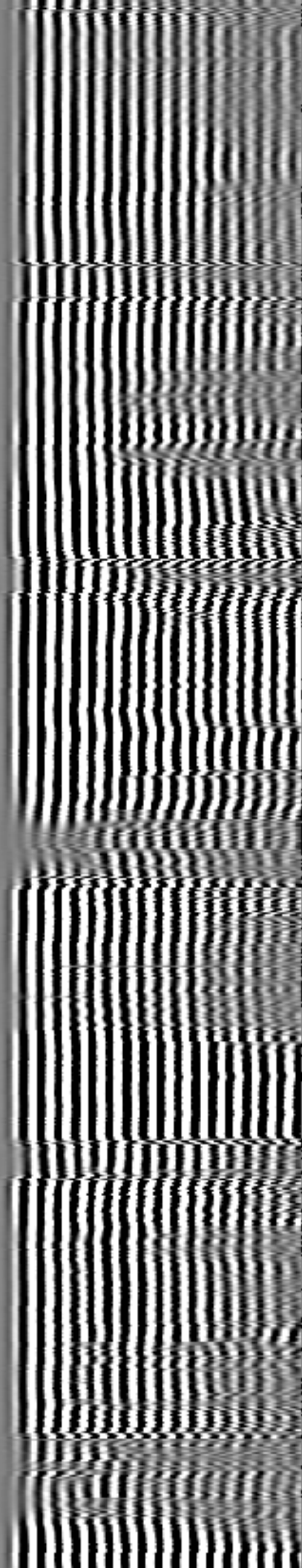
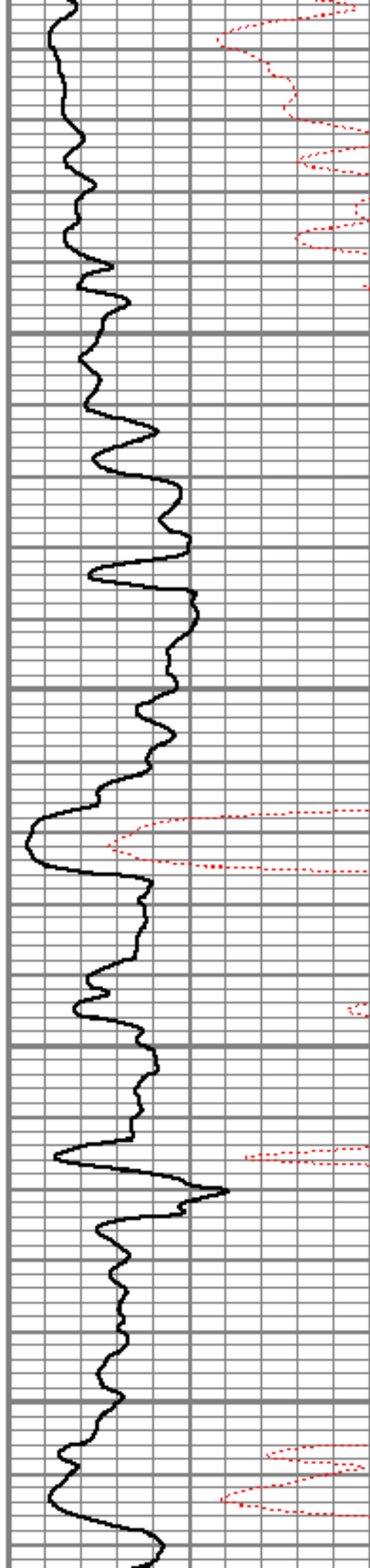


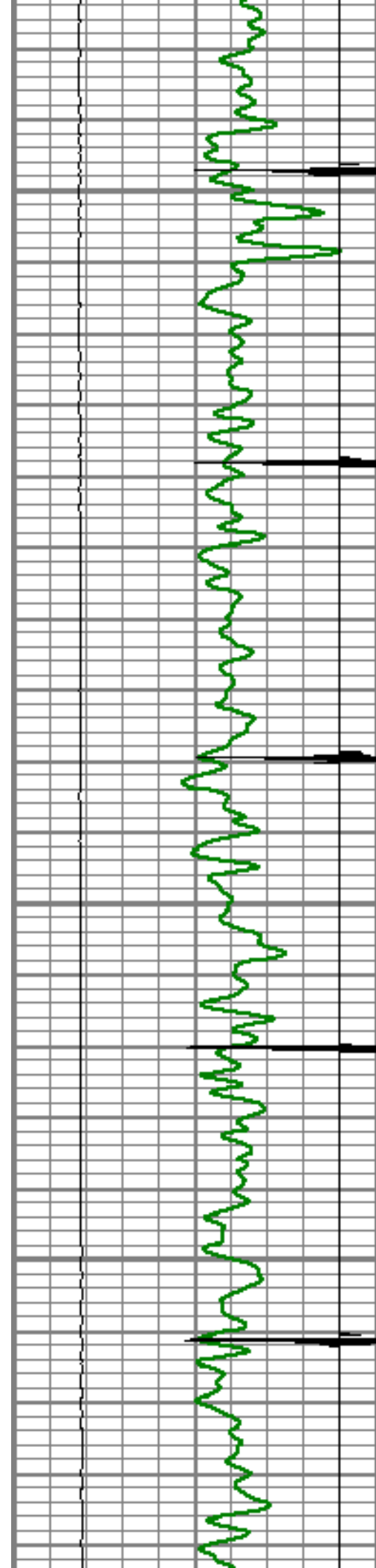
4800

4850

4900

4950



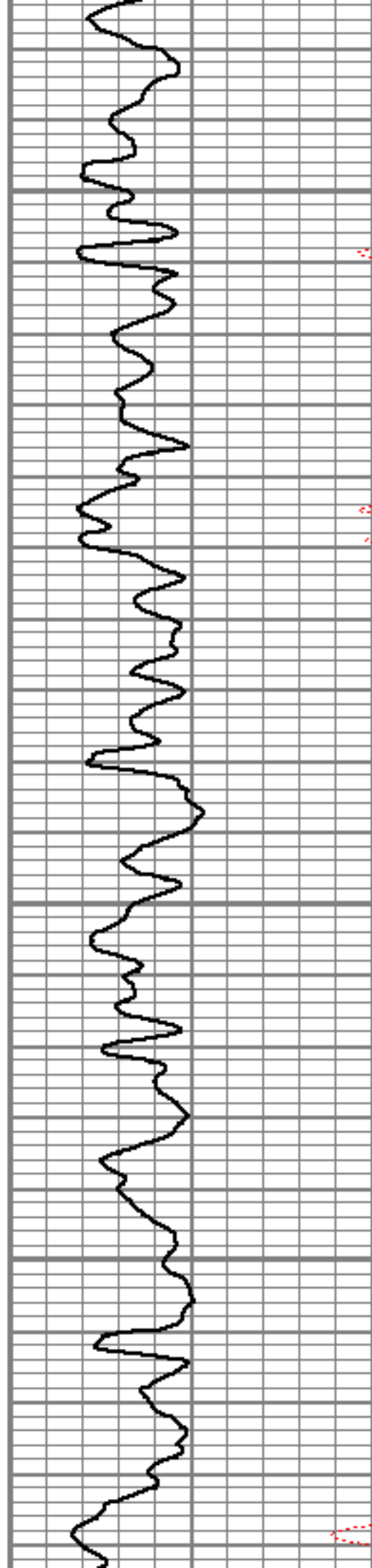


5000

5050

5100

5150

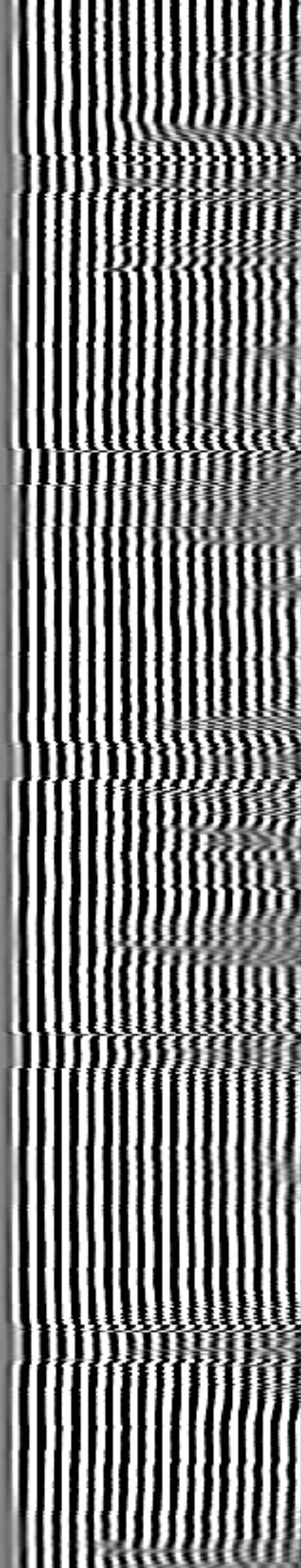


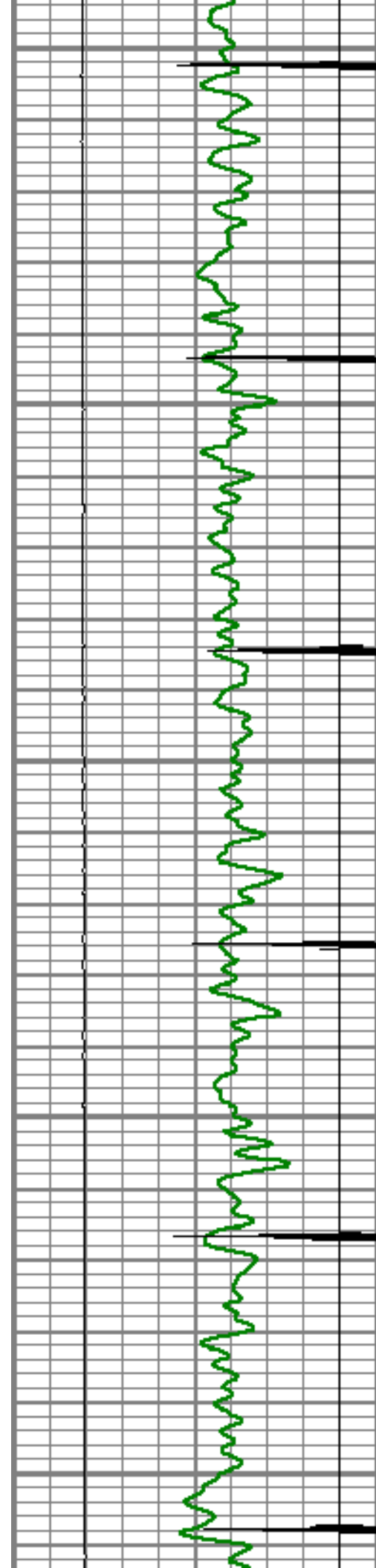
2

2

2

2





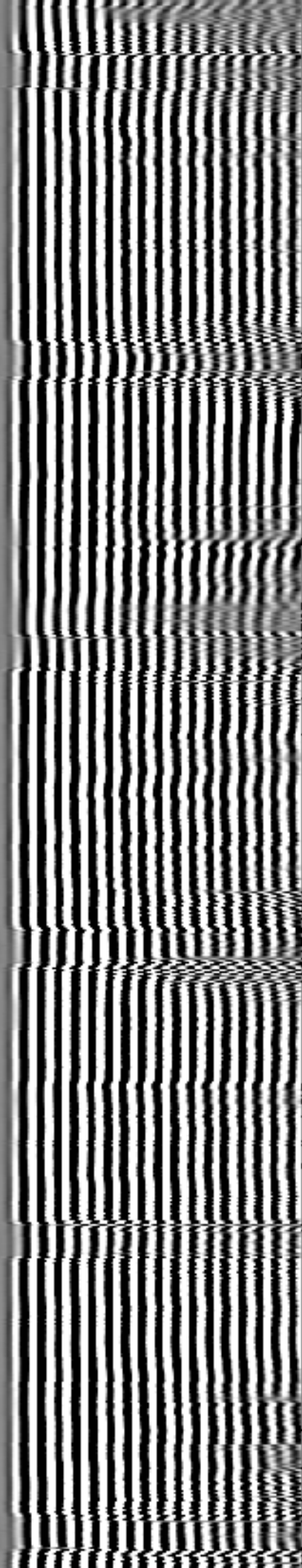
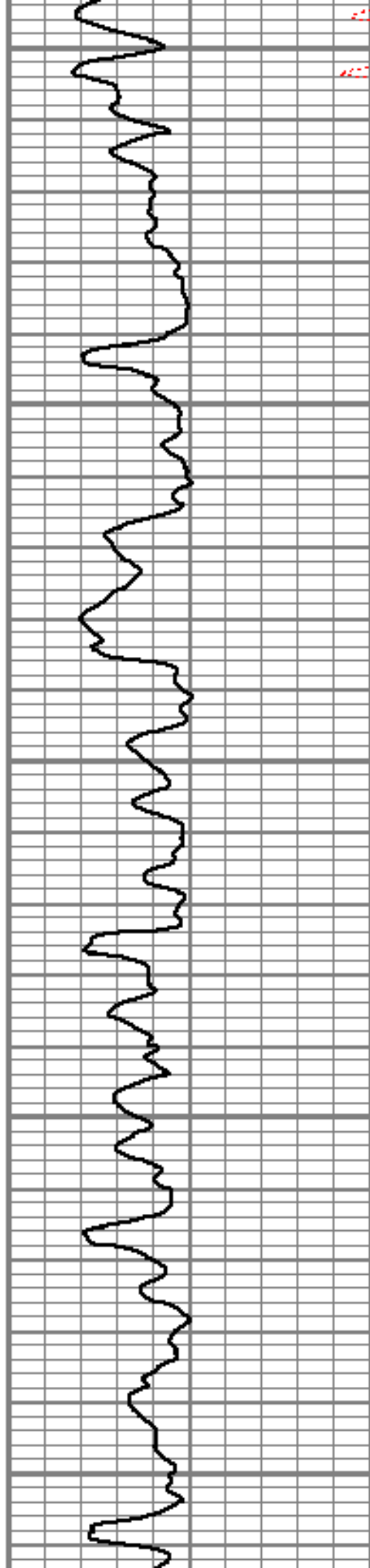
5200

5250

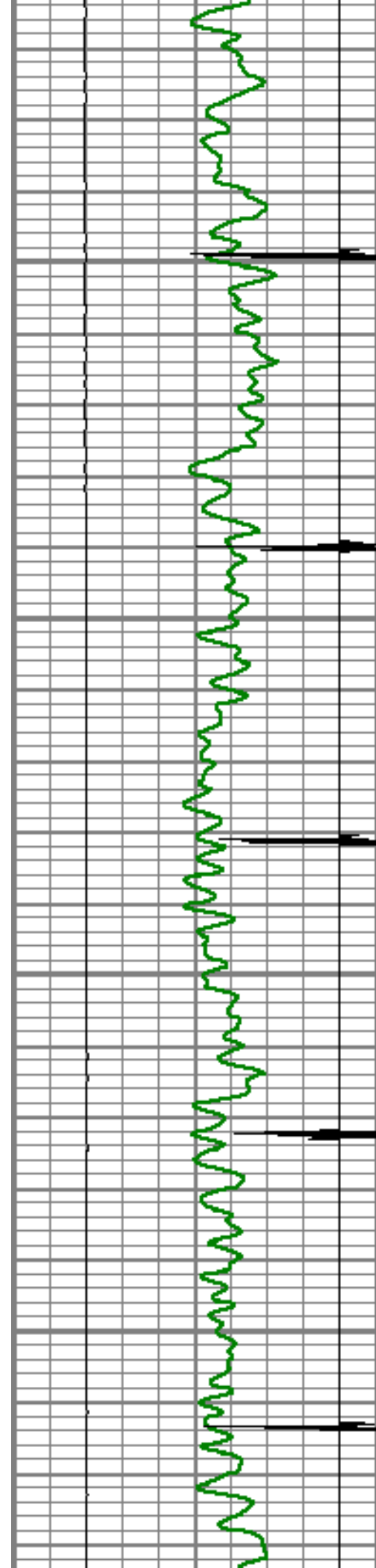
5300

5350

5400





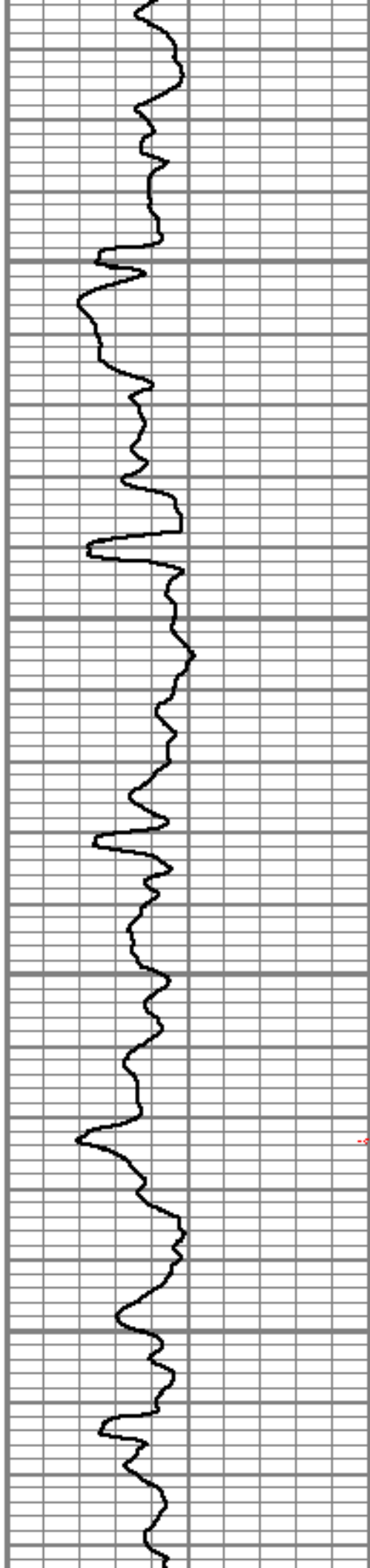


5450

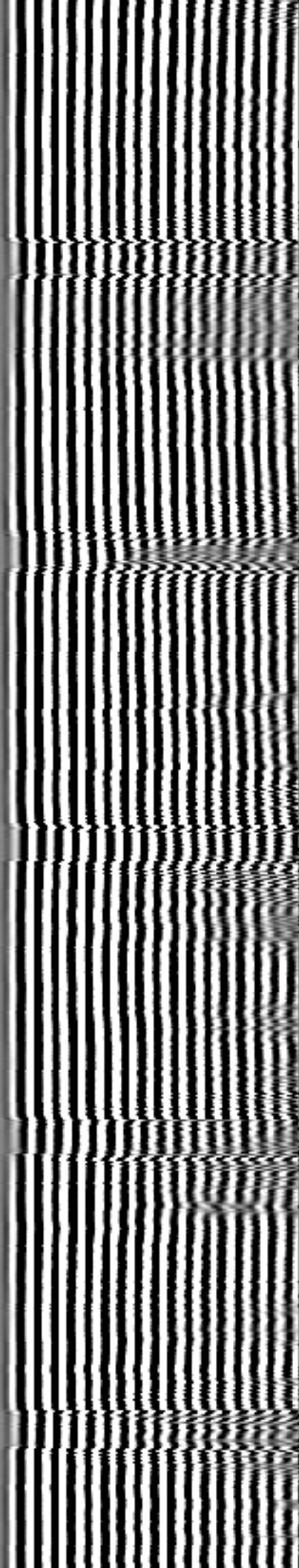
5500

5550

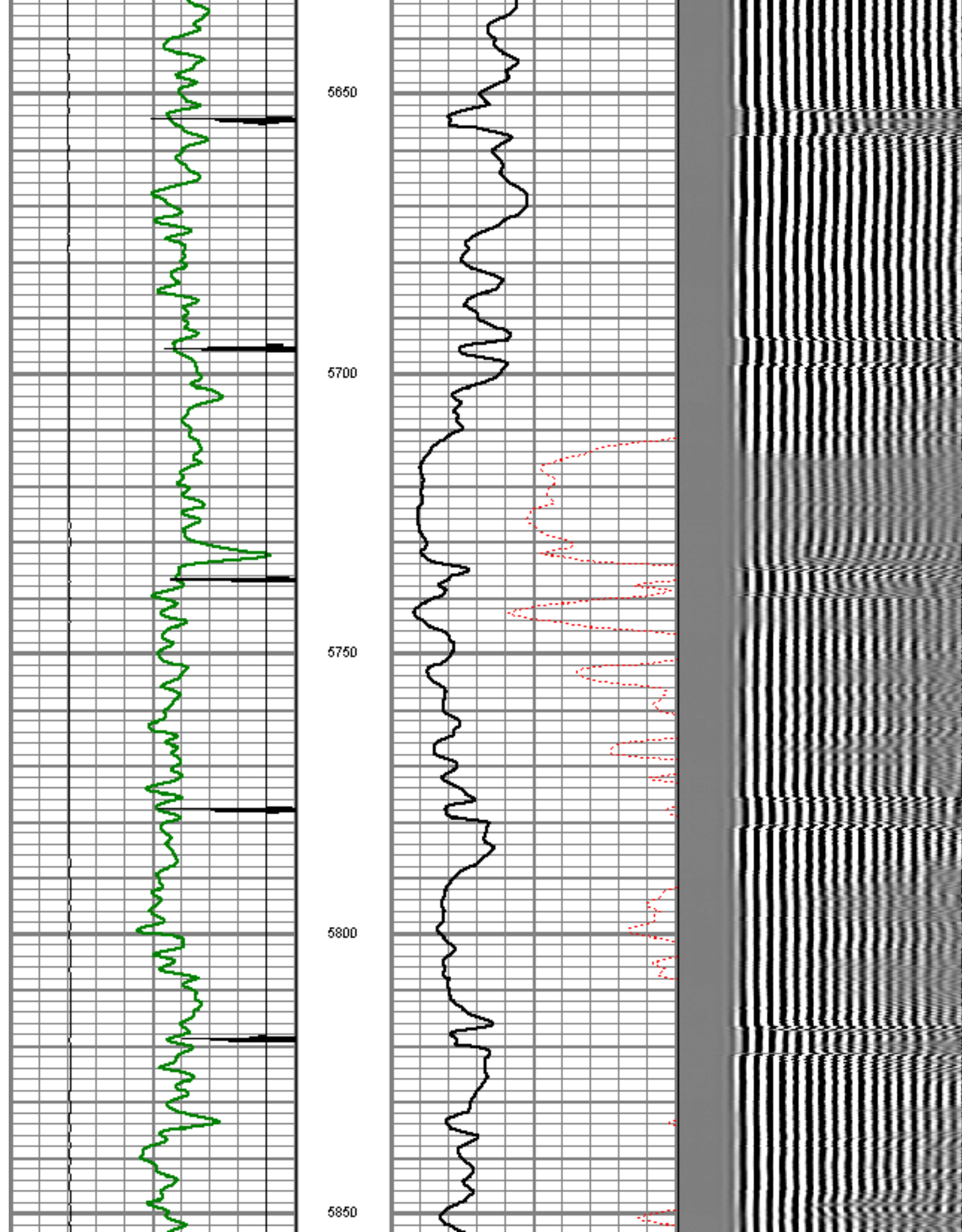
5600

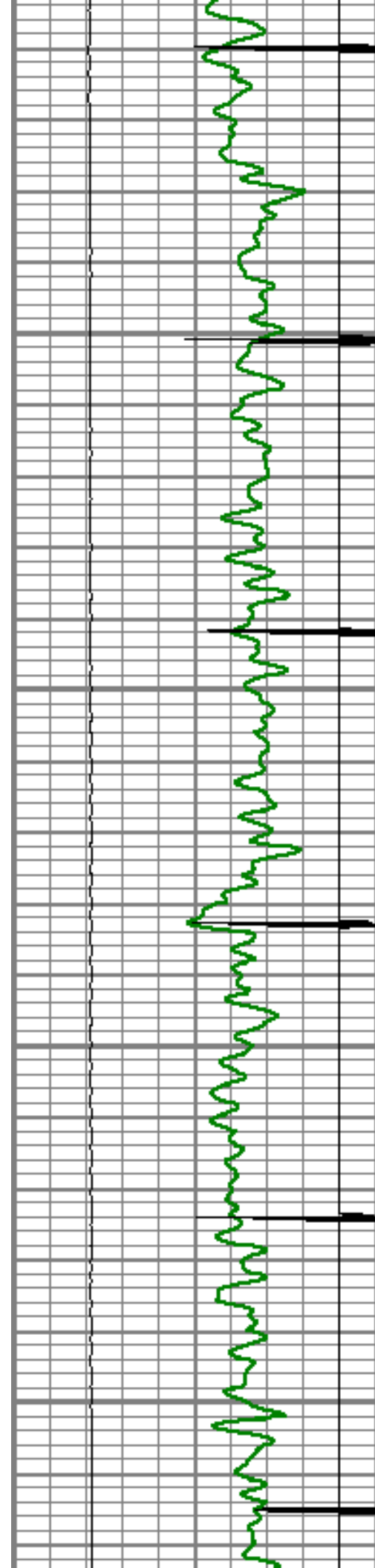


5600







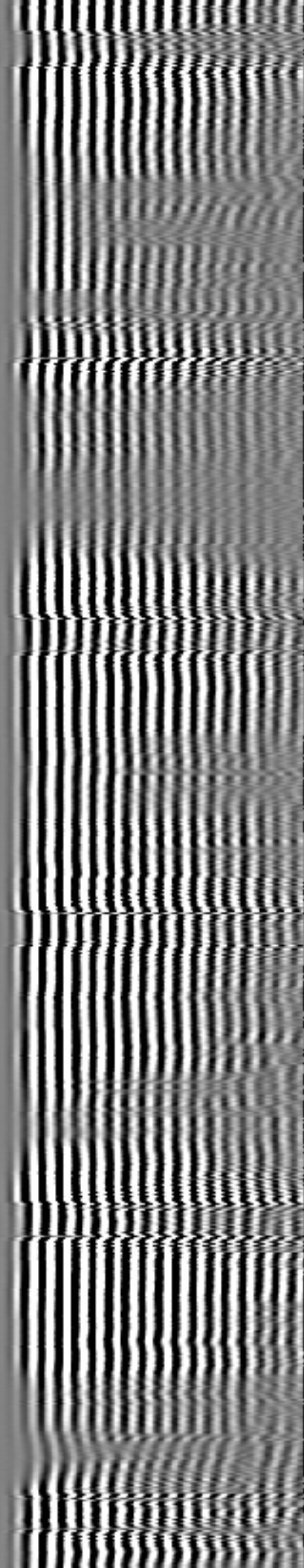
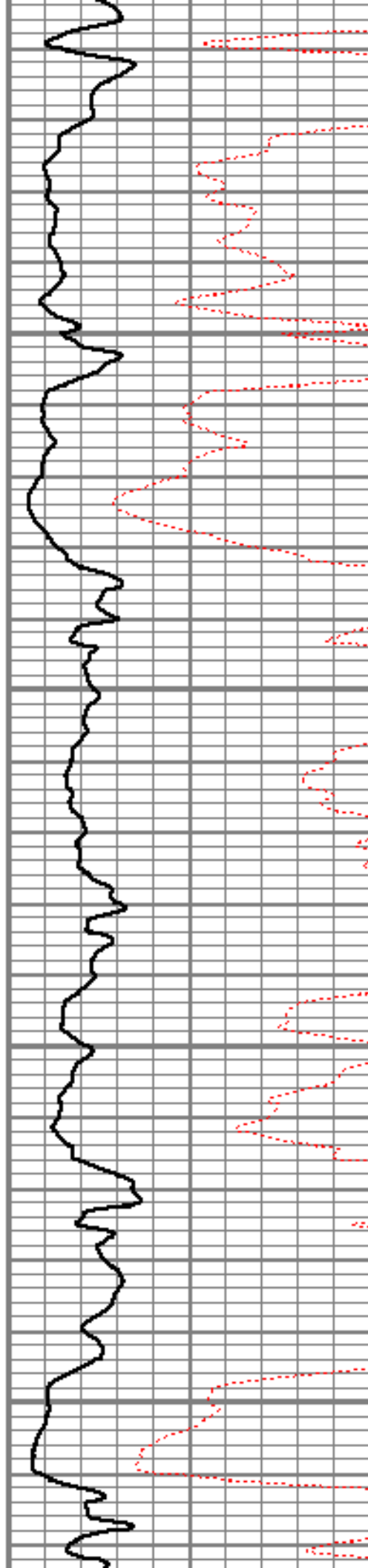


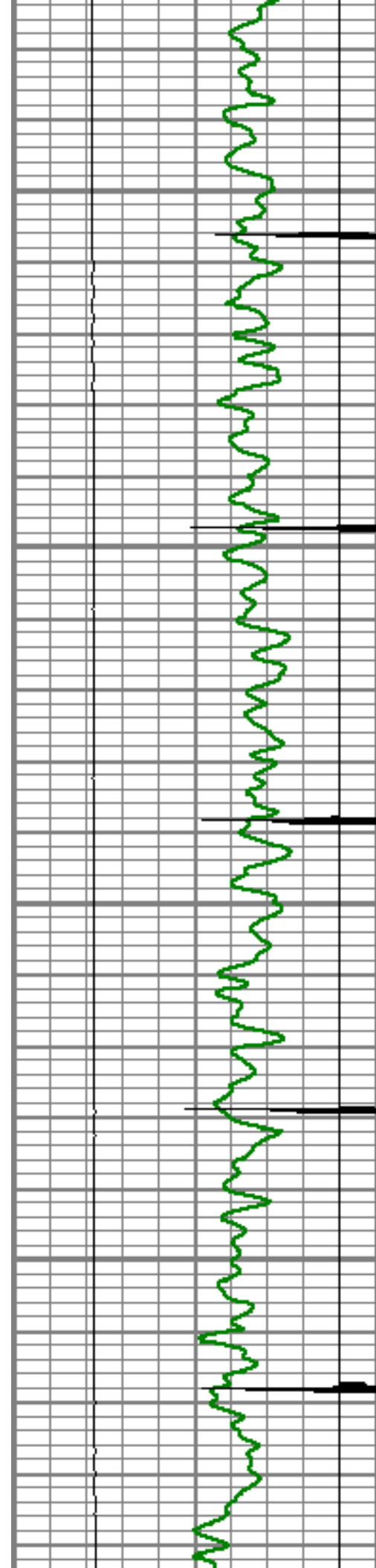
5900

5950

6000

6050



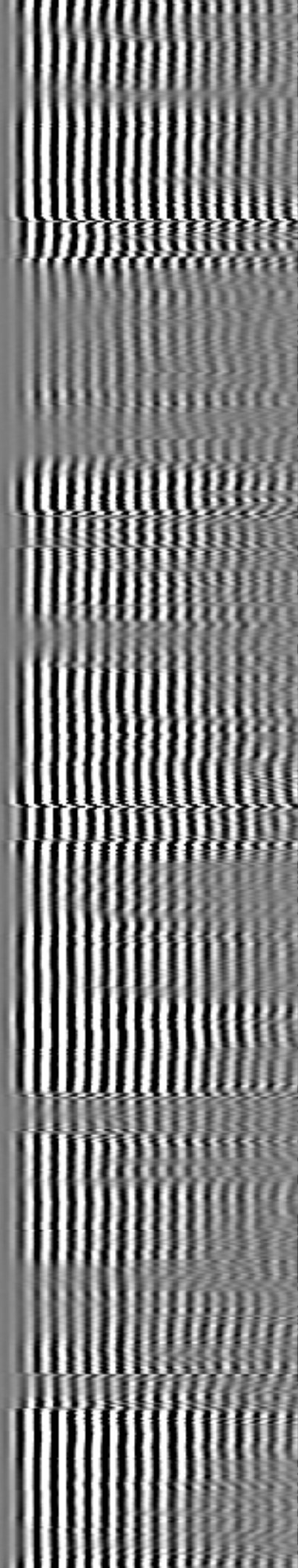
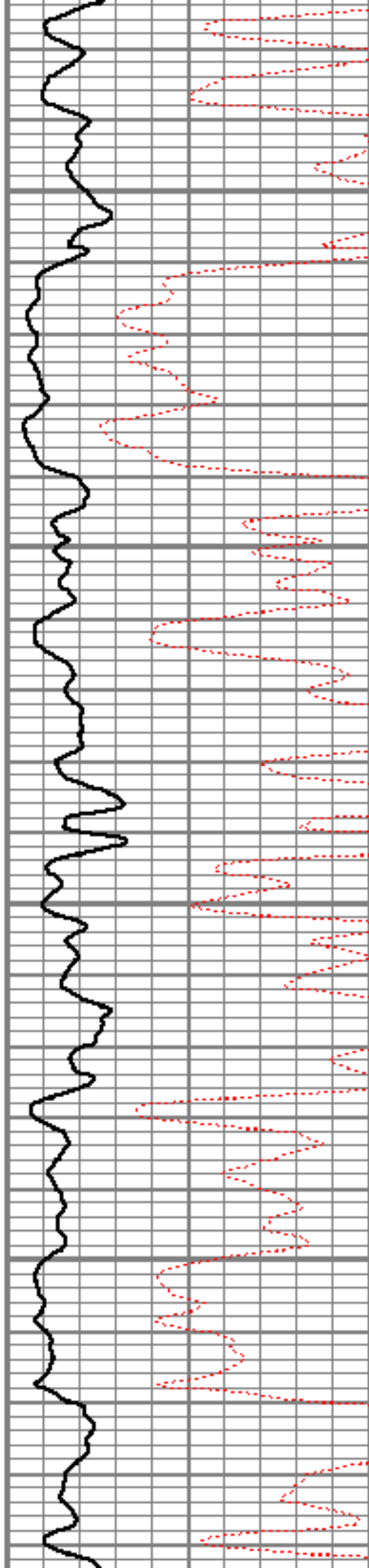


6100

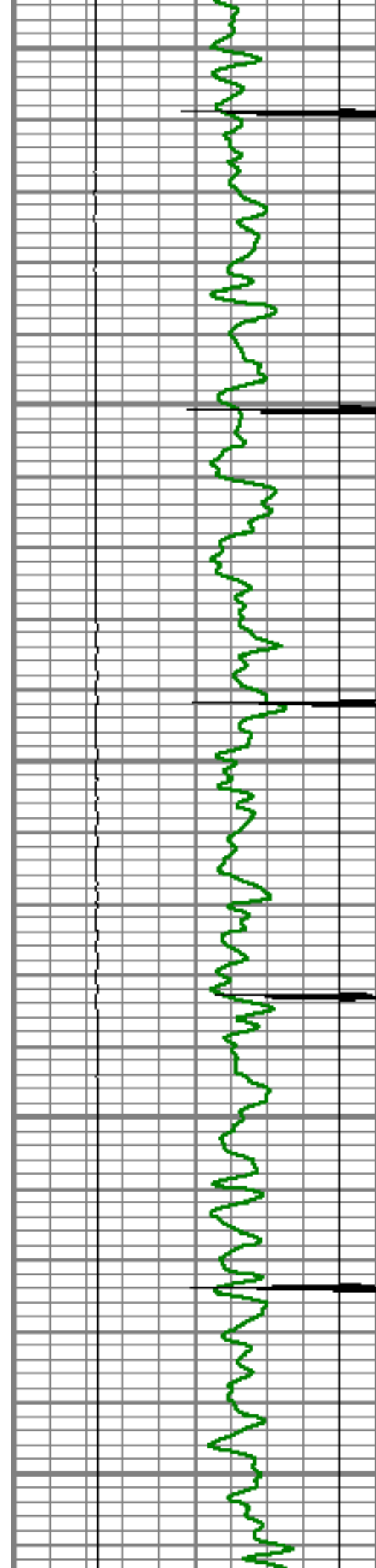
6150

6200

6250







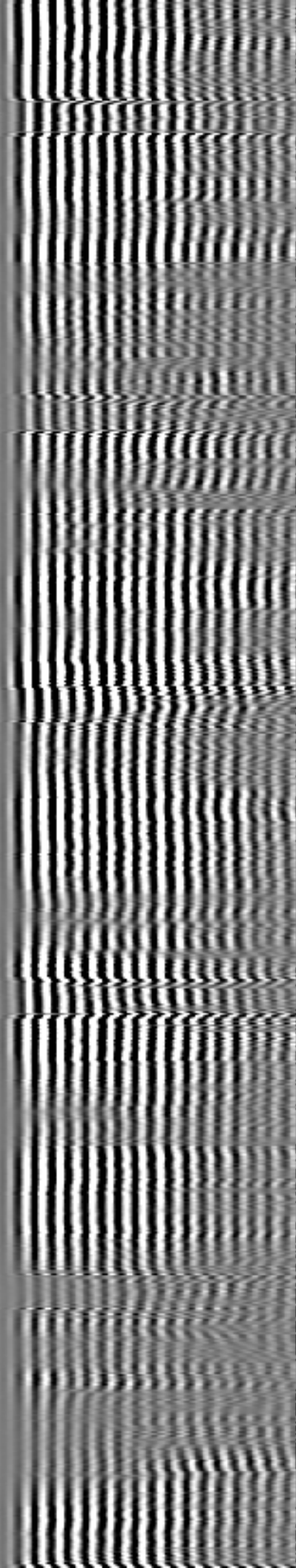
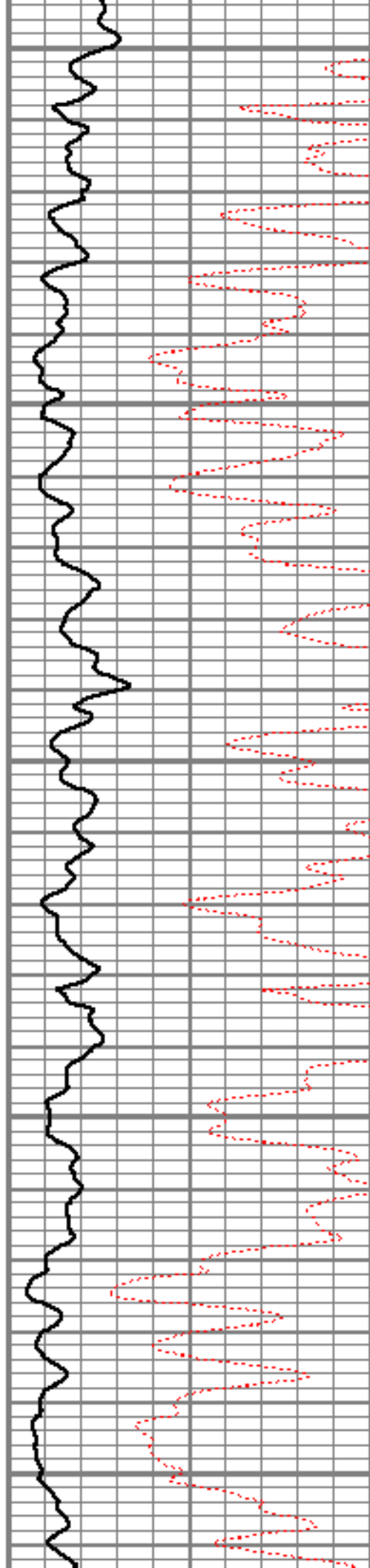
6300

6350

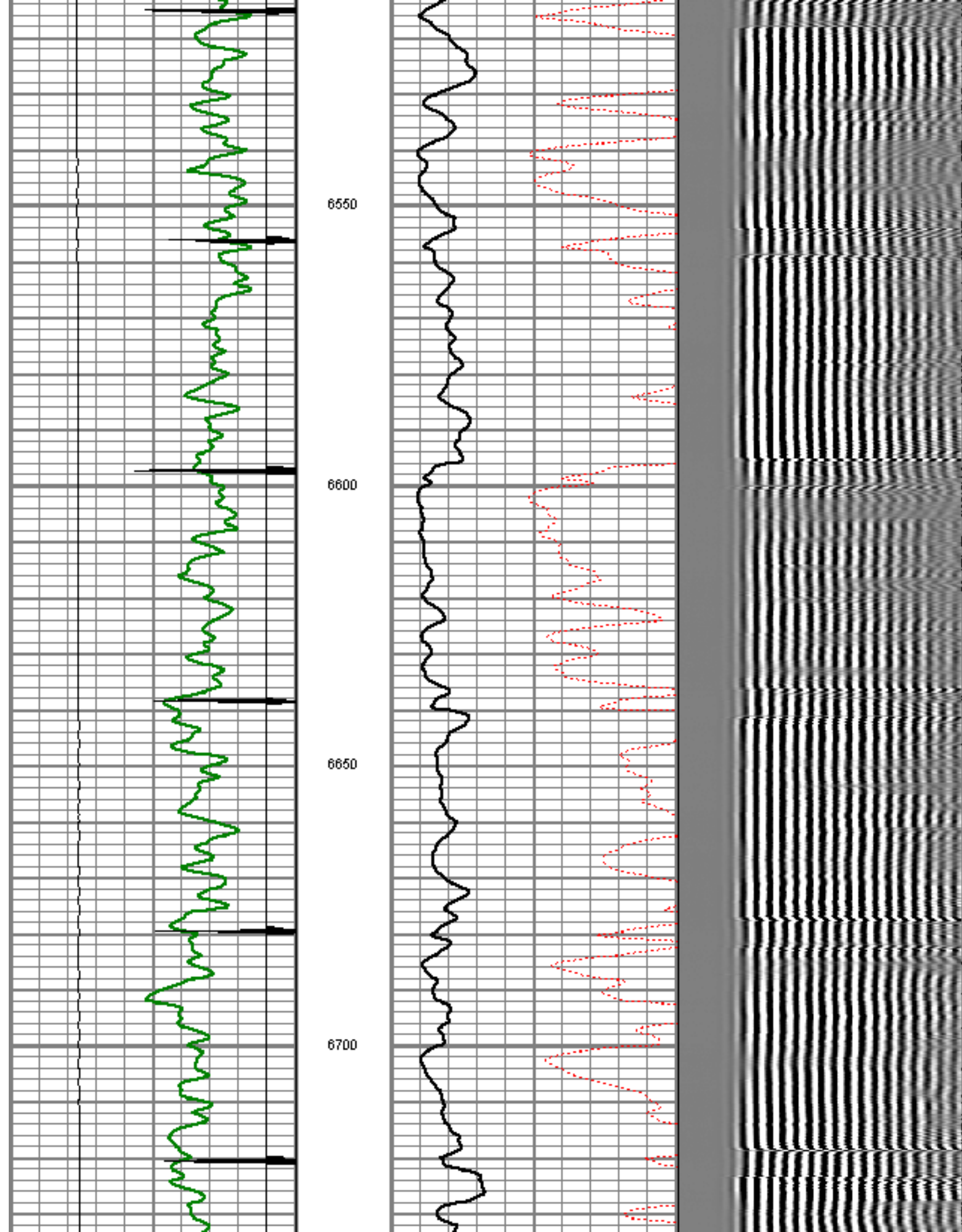
6400

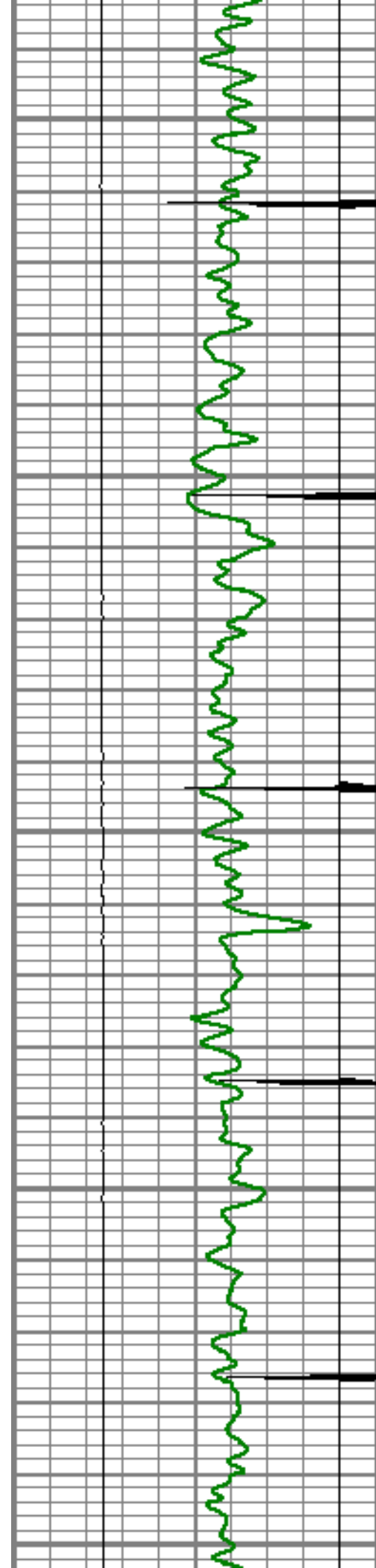
6450

6500









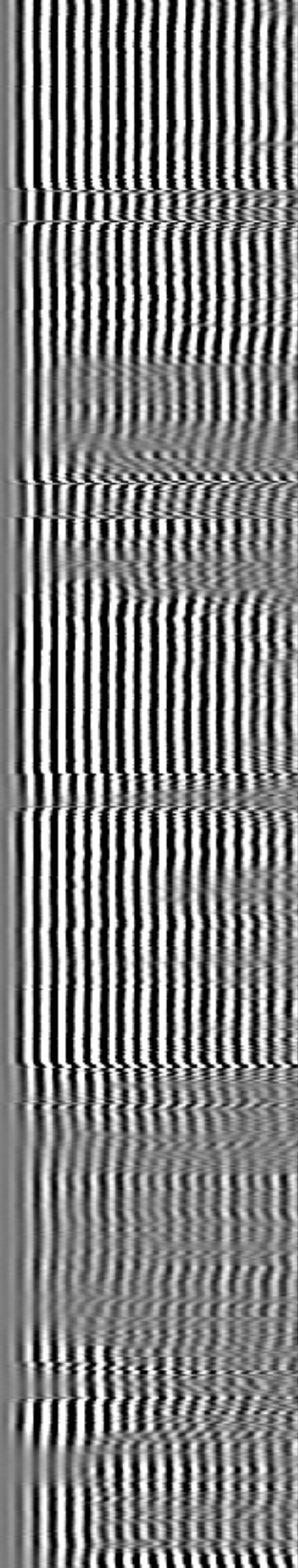
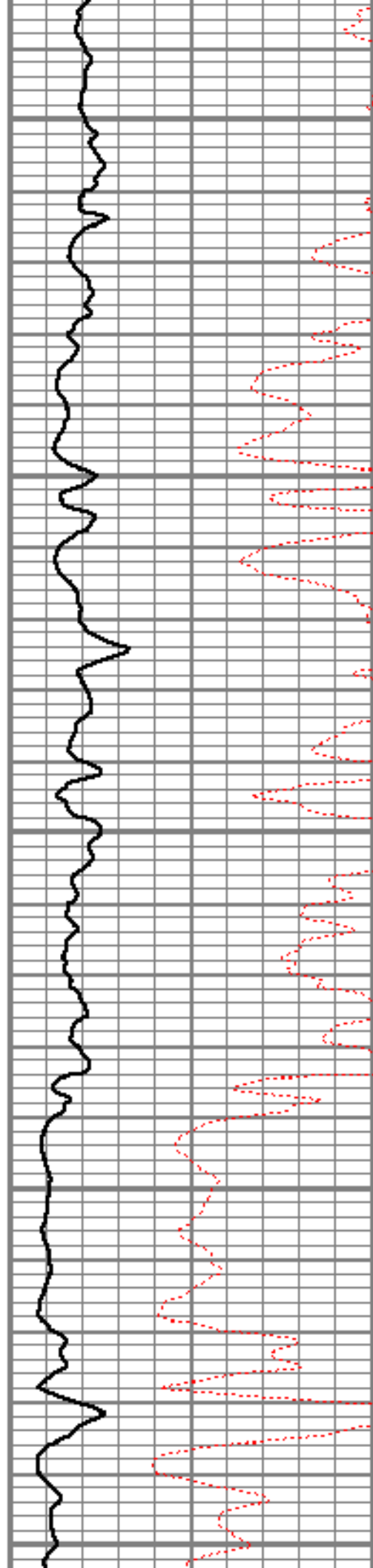
6750

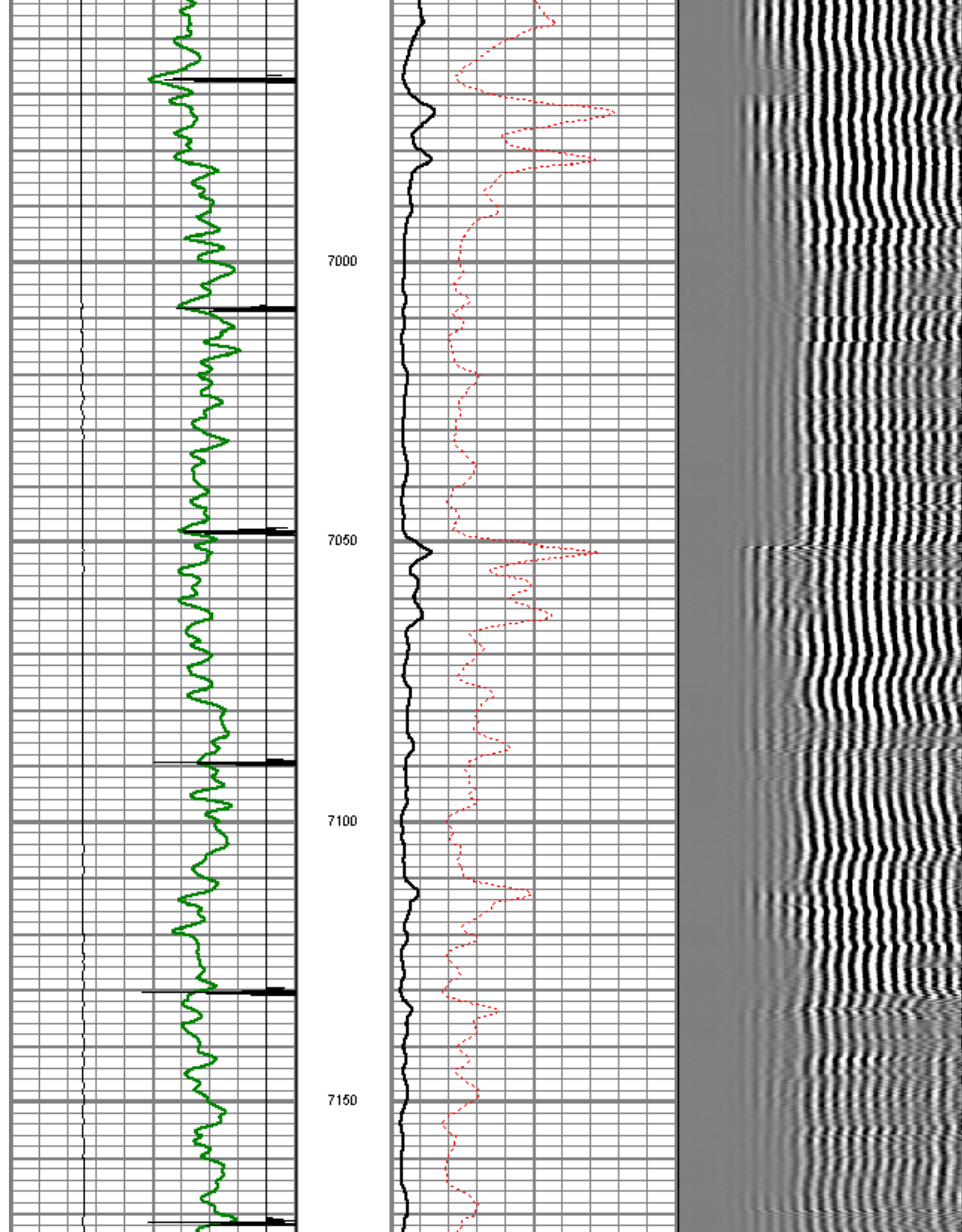
6800

6850

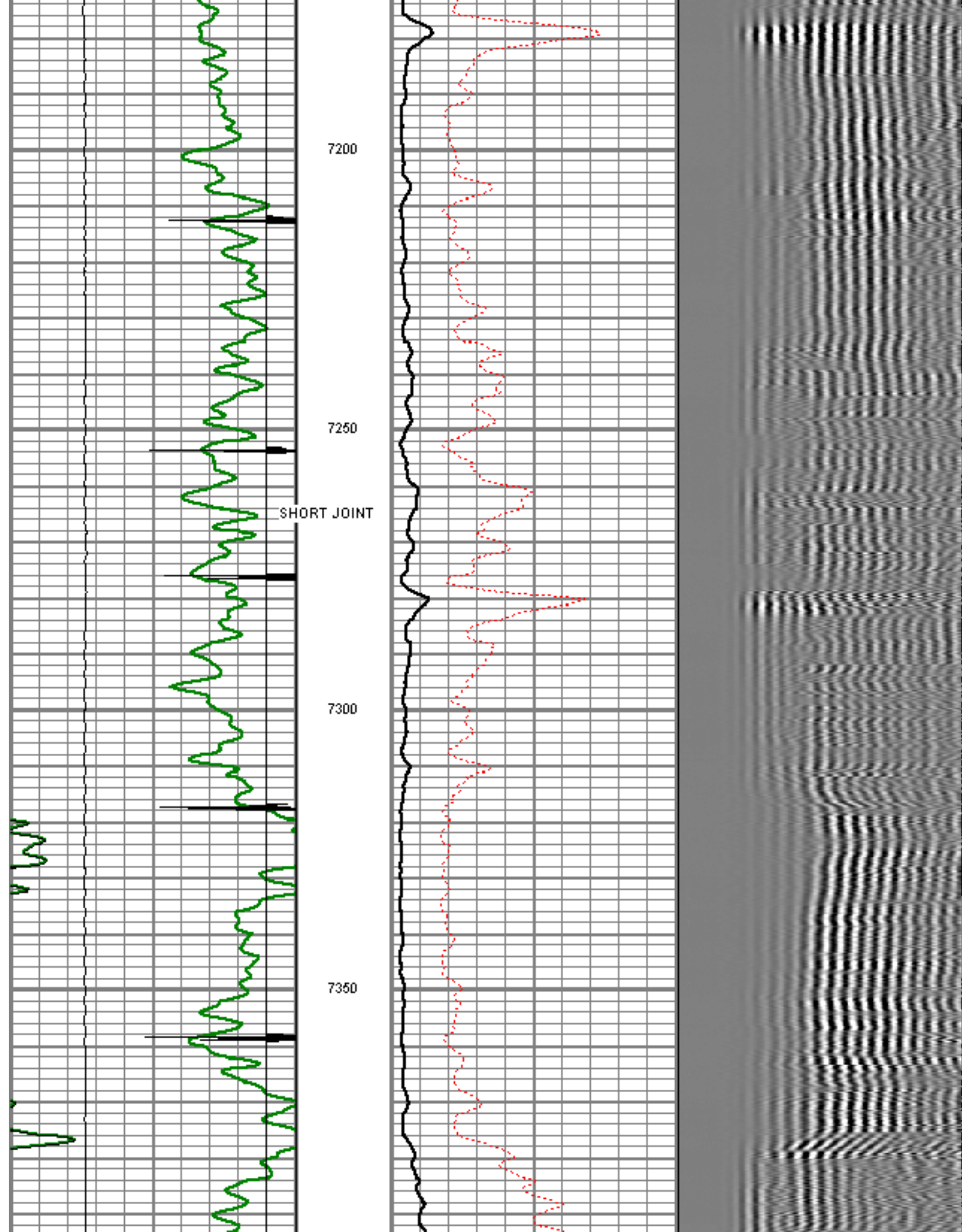
6900

6950

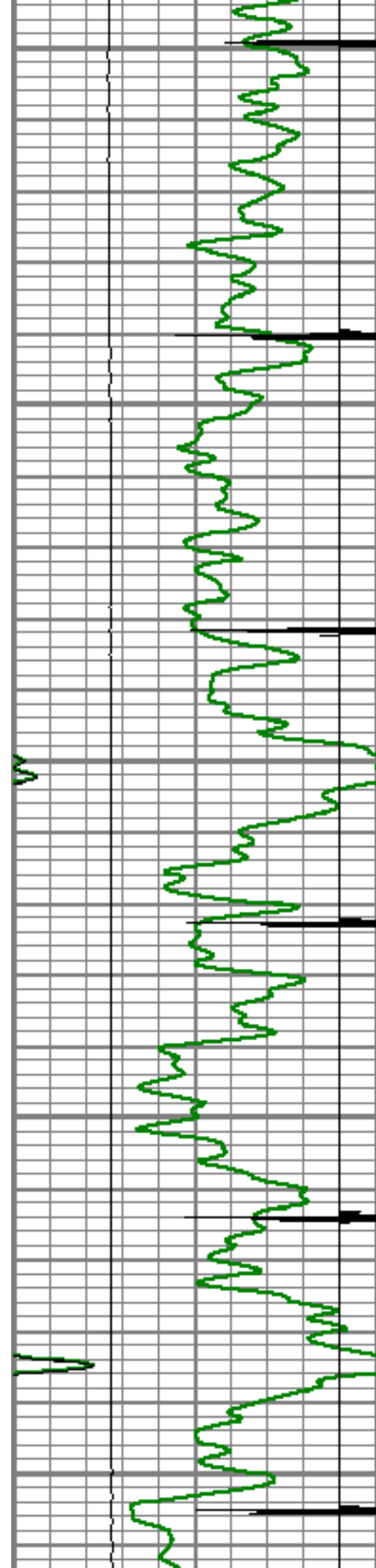












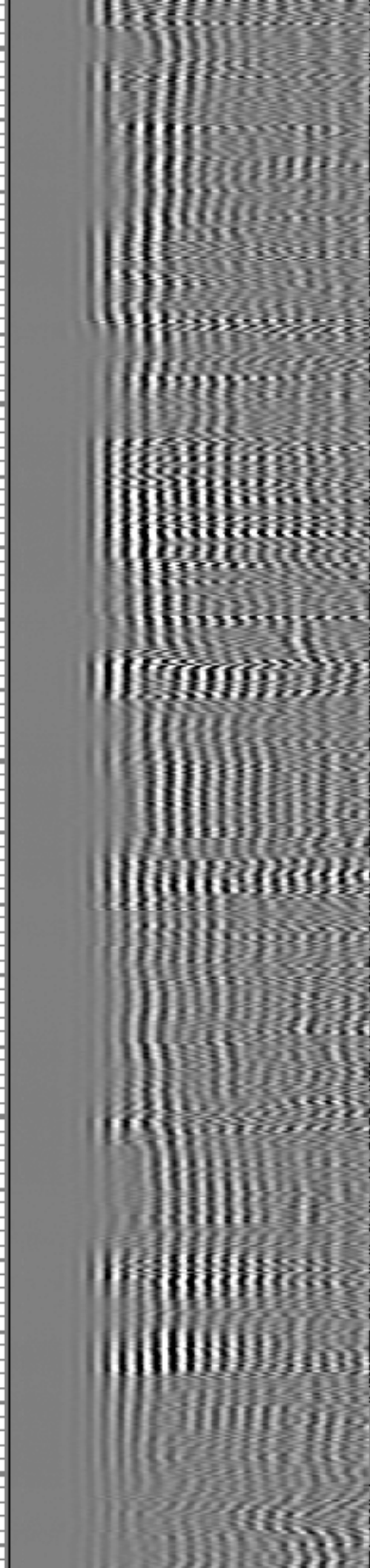
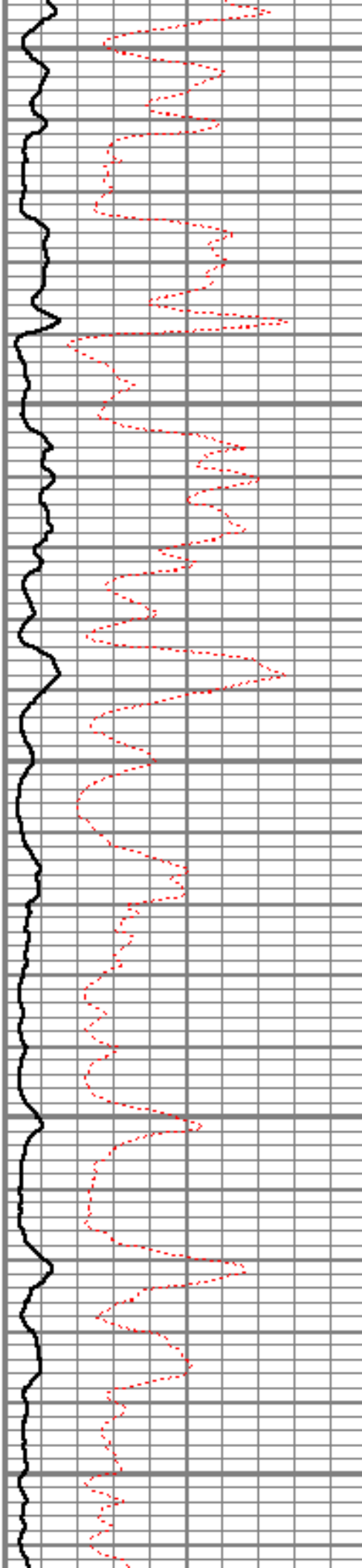
7400

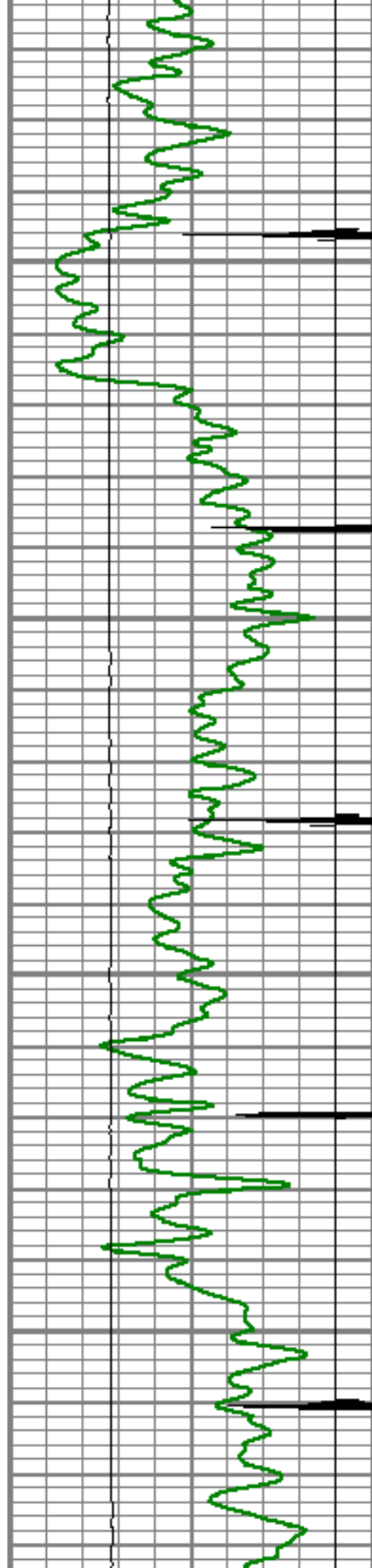
7450

7500

7550

7600



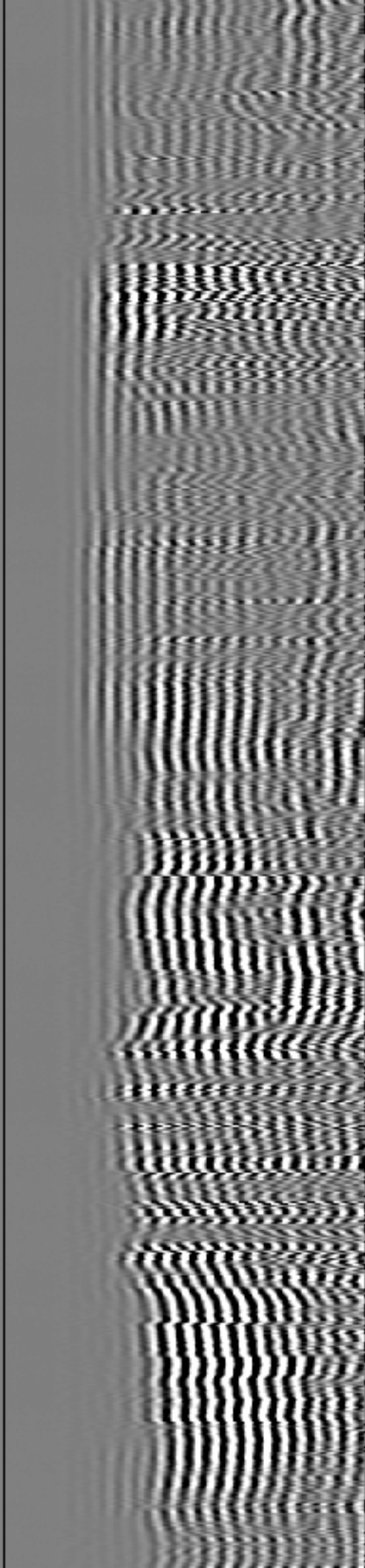
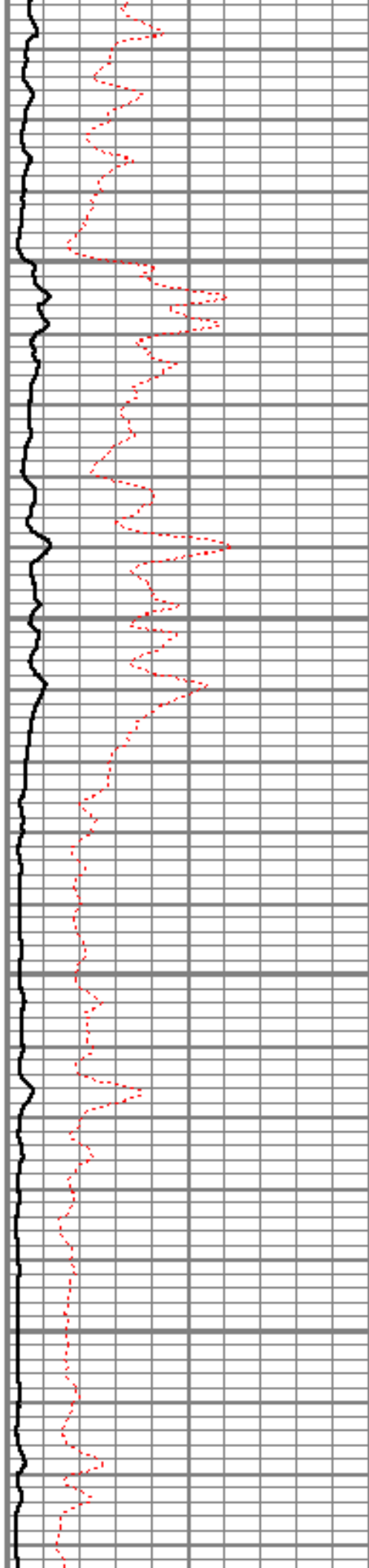


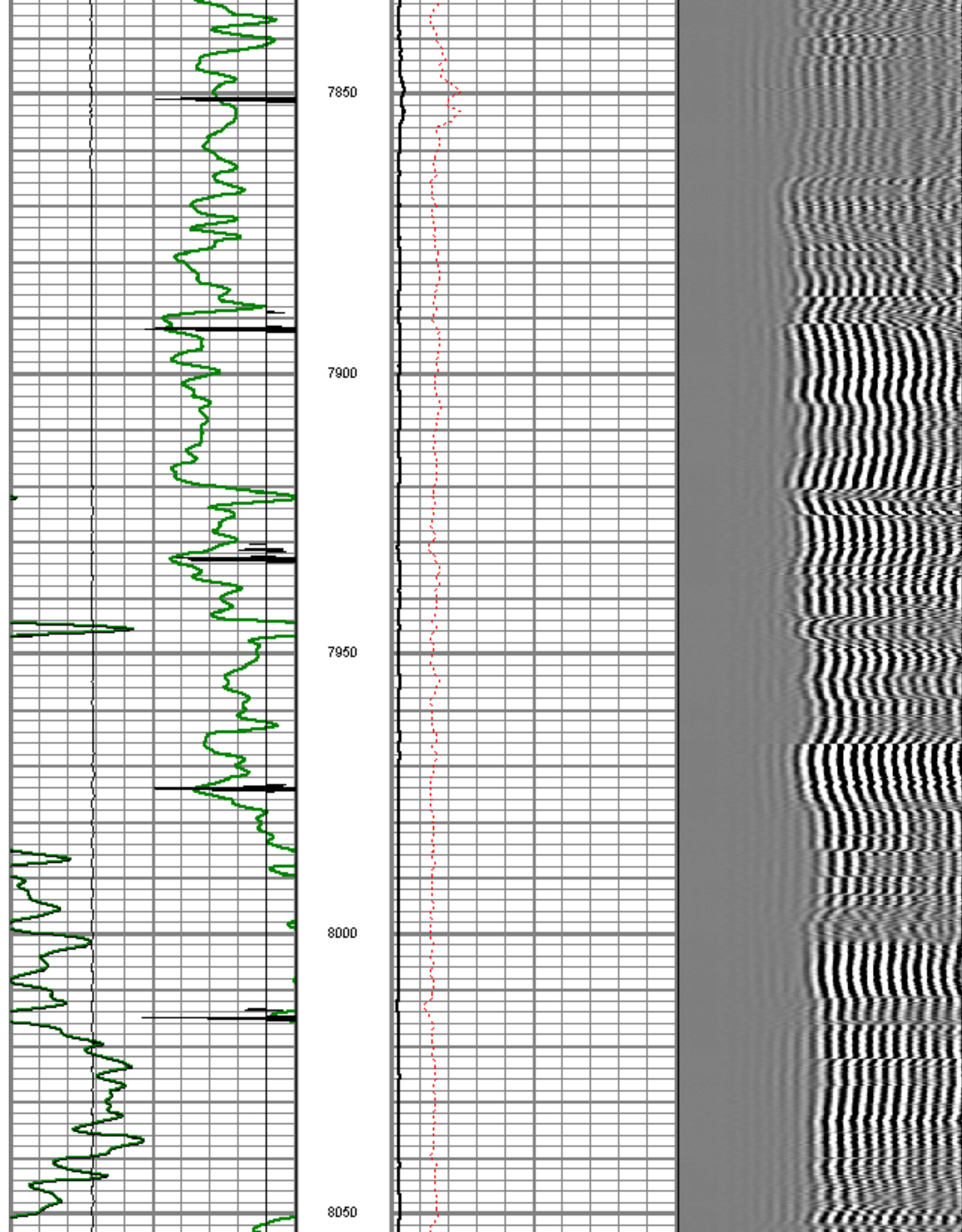
7650

7700

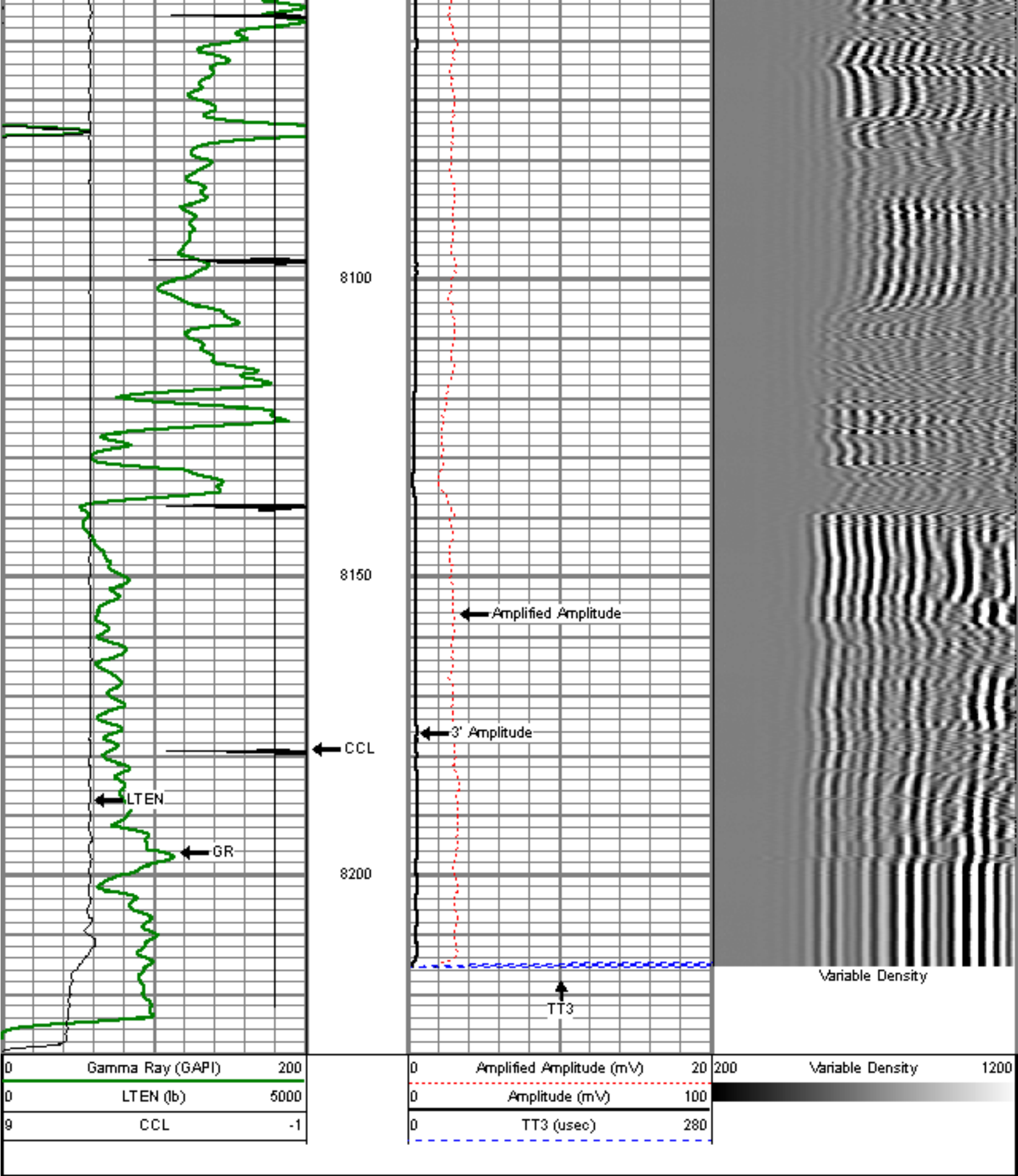
7750


7800









Sensor	Offset (ft)	Schematic	Description	Len (ft)	OD (in)	Wt (lb)
titan			Titan Cable Head Go Pls.	1.02	1.44	1.50



			Centralizer-Probe (CENT-PROBE-1) Probe Bowspring Centralizer	2.88	2.75	10.00
WVF3	14.54		CBL-PRB_CBL_DIGITAL (PRB_CBL_DIG_28.7711) Probe 2.75" Dual Receiver Board		2.75	60.00
WVF5	13.54					
			Centralizer-Probe (CENT-PROBE-2) Probe Bowspring Centralizer	2.88	2.75	10.00
CCL	6.50		GR-PROBE_GRCCCL (PRB_GRCCCL_275_01) Probe 2.75" 4 Channel Probe	4.54	2.75	30.00
GR	3.77					
			TEMP-Comprobe (TEMP_CMPRB_1375_01) Positive pulse Temp tool	2.88	1.38	15.00
TEMP	0.17					
Dataset: rodman bruntz 11-26.db: field/well/run1/pass16 Total Length: 22.96 ft Total Weight: 126.50 lb O.D.: 2.75 in						



Company  
Well

ENCANA OIL & GAS (USA) INC  
RODMAN BRUNTZ 11-26



Field	WATTENBERG
County	WELD
State	COLORADO