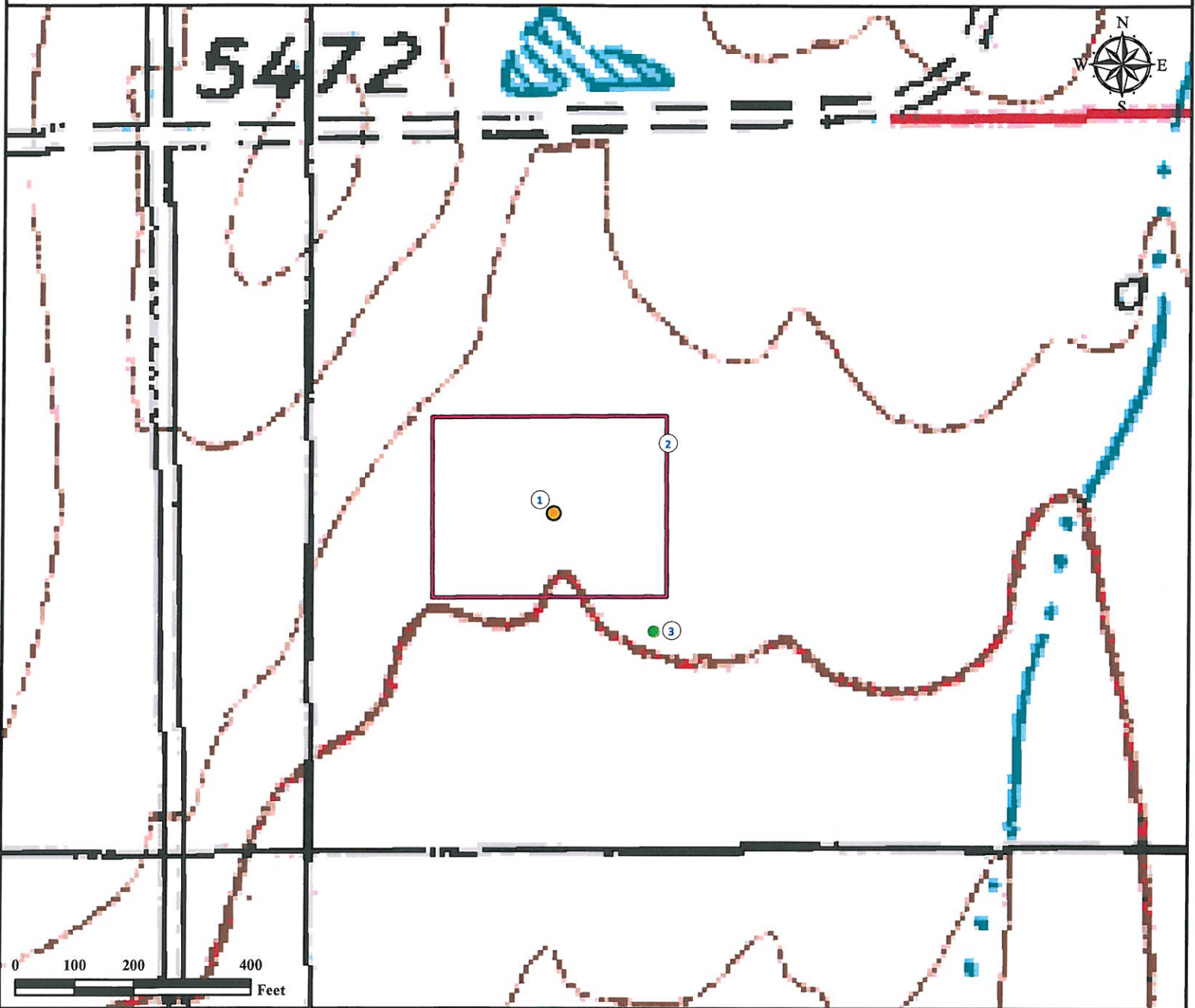


# Reference Area Map

## SAFRANEK #04-1296H

NW¼ NW¼ SECTION 12, TOWNSHIP 9 SOUTH, RANGE 56 WEST OF THE 6TH PRINCIPAL MERIDIAN



1. Proposed well SAFRANEK #04-1296H.

2. Operational Disturbance Area.

3. Reference Photo Point.

### Legend

● Proposed Well

□ Disturbance Area

● Reference Photo Point

### Reference Location

\*\* SAFRANEK #04-1296H

Reference Photo Point (NAD 83)\*\*

Lat: 39.285017° Long:-103.618646° (NAD83)

Elevation: 5459 Feet

Use our resources to find yours!

[www.petro-fs.com](http://www.petro-fs.com)

(303) 928-7128

Field Date: 10/02/2011  
Drafting Date: 10/07/2011  
Drafter: KLM  
Checked By: BHF

Data Sources:  
- Topo courtesy of USGS

Prepared for:

**AUBURN OPERATING,  
INC**

