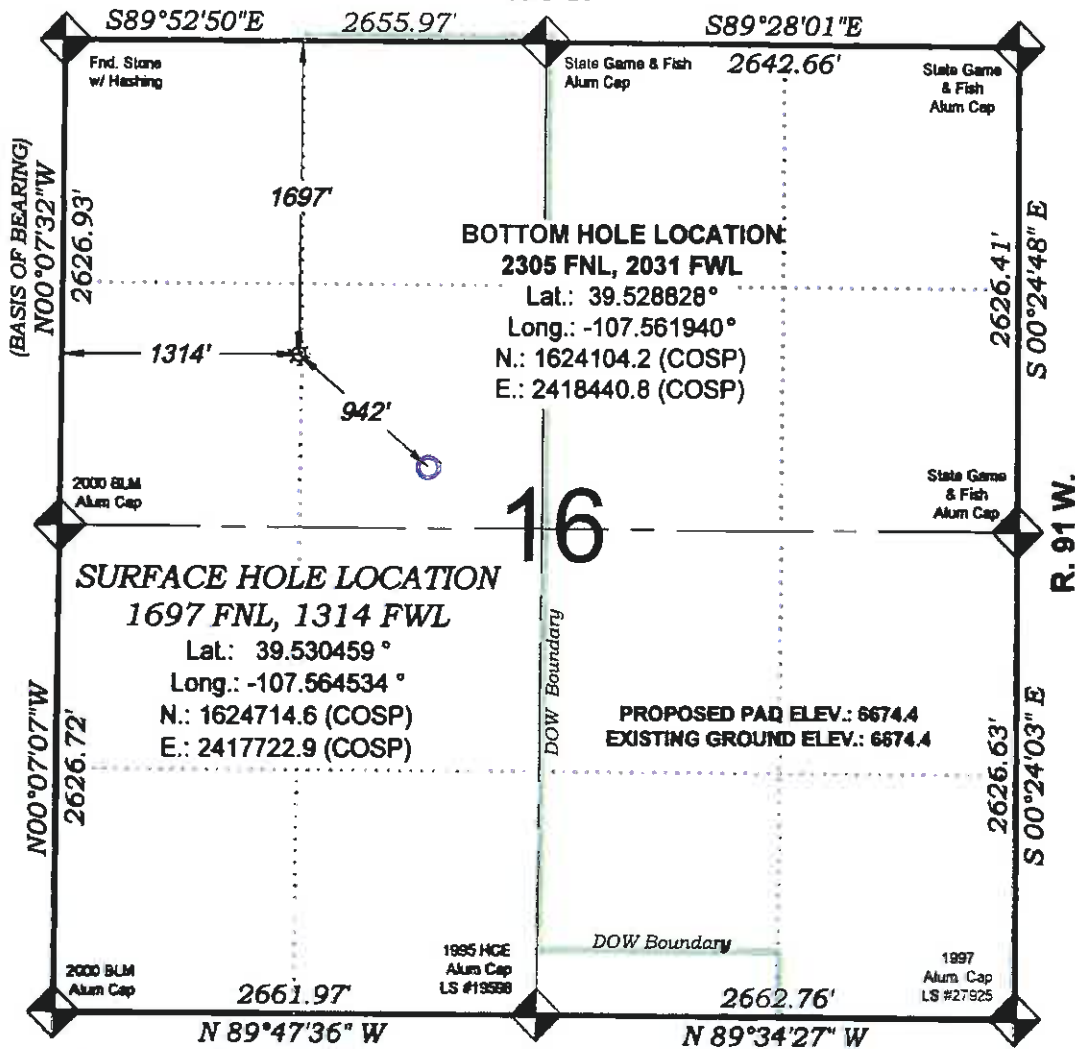


Jolley Family LLLP KP 422-16

T. 6 S.



SEE CONSTRUCTION LAYOUT
 PLAT FOR VISIBLE IMPROVEMENTS
 WITHIN 400' OF THIS LOCATION



SURVEYORS STATEMENT

I, MICHAEL J. LANGHORNE, A REGISTERED LAND SURVEYOR IN THE STATE OF COLORADO DO HEREBY CERTIFY THAT THE SURVEY SHOWN HEREON WAS PREPARED UNDER MY DIRECT SUPERVISION AND HAS BEEN STAKED ON THE GROUND AS SHOWN ON THE PLAT AND CHECKING THAT THIS MAP IS A TRUE REPRESENTATION THEREOF.

MICHAEL J. LANGHORNE, COLORADO REGISTRATION NO. 36572
 FOR AND ON BEHALF OF LAND SURVEYORS, INC.
 BOOKCLIFF SURVEY SERVICES, INC.

REFERENCES

- DEPENDENT RESURVEY T. 6 S., R. 91 W., 6th P.M. (GEO) NOTES
- U.S.G.S. QUAD: NEW CASTLE, CO

NOTES

- ELEVATIONS BASED ON N.A. V.D. 1988 PUBLISHED COORDINATES.
- LATITUDES AND LONGITUDES ARE BASED ON NAD 83, PUBLISHED COORDINATES.
- STATE PLANE COORDINATES ARE BASED ON COLORADO CENTRAL ZONE, U.S. SURVEY FEET.
- ELEVATION MASK SET TO 15'
- GPS OPERATOR J. KIRKPATRICK OBSERVED A PDOP OF 0.8 FOR SURVEY POINT NUMBER 72000.
- SURFACE AND BOTTOM HOLE LOCATIONS ARE MEASURED 90° FROM SECTION LINES.

WELL LOCATION PLAT Prepared for:

Williams Williams Production, RMT

SW1/4 NW1/4, SECTION 16
 T. 6 S., R. 91 W. of the 6th P.M.
 GARFIELD COUNTY, COLORADO

Bookcliff Survey Services, Inc.
 1000 E. 1st Ave.
 Suite 100
 Ft. Collins, CO 80501
 Ph: (970) 625-2722
 Fax: (970) 625-2722

BOOKCLIFF
 Survey Services, Inc.

SURVEY DATE: 6/9/11
 MAP DATE: 8/25/11
 SCALE: 1" = 1000'
 PLAT: 1 of 1
 PROJECT: Williams Valley