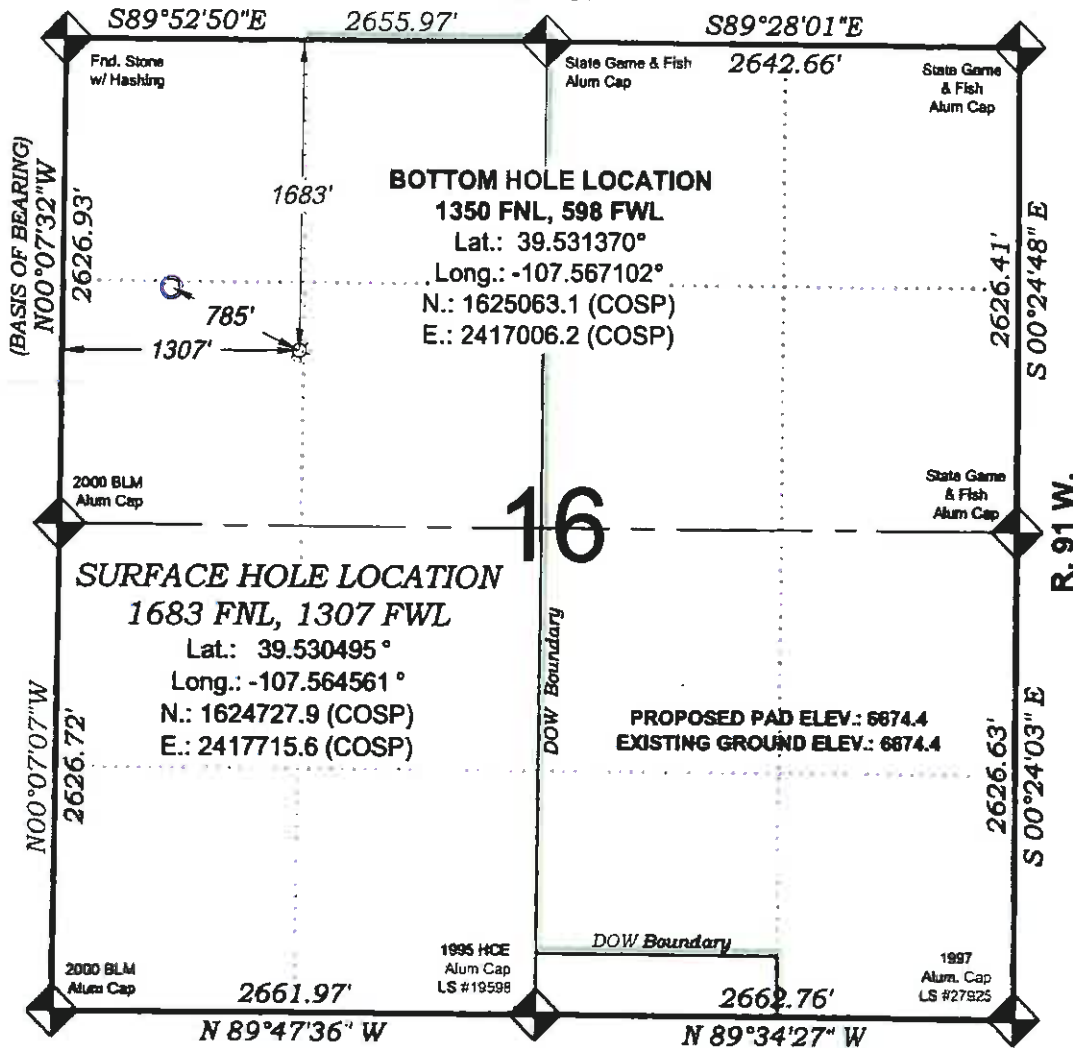


Jolley Family LLLP KP 12-16

T. 6 S.



SEE CONSTRUCTION LAYOUT
PLAT FOR VISIBLE IMPROVEMENTS
WITHIN 400' OF THIS LOCATION



SURVEYORS STATEMENT

I, MICHAEL J. LANGHORNE, A REGISTERED LAND SURVEYOR IN THE STATE OF COLORADO DO HEREBY CERTIFY THAT THE SURVEY SHOWN HEREON WAS PREPARED UNDER MY DIRECT SUPERVISION AND HAS BEEN STAKED ON THE GROUND AS SHOWN ON THE PLAT AND CHECKING THAT THIS MAP IS A TRUE REPRESENTATION THEREOF.

Michael J. Langhorne

MICHAEL J. LANGHORNE, COLORADO REGISTRATION NO. 36572
FOR AND ON BEHALF OF
BOOKCLIFF SURVEY SERVICES, INC.

REFERENCES

- 1) DEPENDENT RESURVEY T. 6 S., R. 91 W., 6th P.M. (GLO NOTES)
- 2) U.S.G.S. QUAD. NEW CASTLE, CO

REVISED: 10/11/11

- LEGEND -

FIELD LOCATED SECTION
MONUMENTS AS DESCRIBED

FIELD SURVEYED
WELL LOCATION

CALCULATED BOTTOM
HOLE LOCATION

CALCULATED SECTION
CORNER LOCATION

NOTES

- 1) ELEVATIONS BASED ON N.A. V.D. 1988 PUBLISHED COORDINATES.
- 2) LATITUDES AND LONGITUDES ARE BASED ON NAD 83 PUBLISHED COORDINATES.
- 3) STATE PLANE COORDINATES ARE BASED ON COLORADO CENTRAL ZONE, U.S. SURVEY FEET.
- 4) ELEVATION MASK SET TO 15"
- 5) GPS OPERATOR J. KIRKPATRICK, OBSERVED A PDOP OF 0.8 FOR SURVEY POINT NUMBER 72000.
- 6) SURFACE AND BOTTOM HOLE LOCATIONS ARE MEASURED 90° FROM SECTION LINES.

WELL LOCATION PLAT Prepared for:

Williams Williams Production, RMT

SW1/4 NW1/4, SECTION 16
T. 6 S., R. 91 W. of the 6th P.M.
GARFIELD COUNTY, COLORADO

311 E. 1st St., Suite 100
P.O. Box 1000, 82601
Ph: (970) 821-2700
Fax: (970) 821-2771

BOOKCLIFF
Survey Services, Inc.

SURVEY DATE: 6/9/11
MAP DATE: 8/25/11
SCALE: 1" = 1000'
PLAT: 1 of 1
PROJECT: Williams Watten