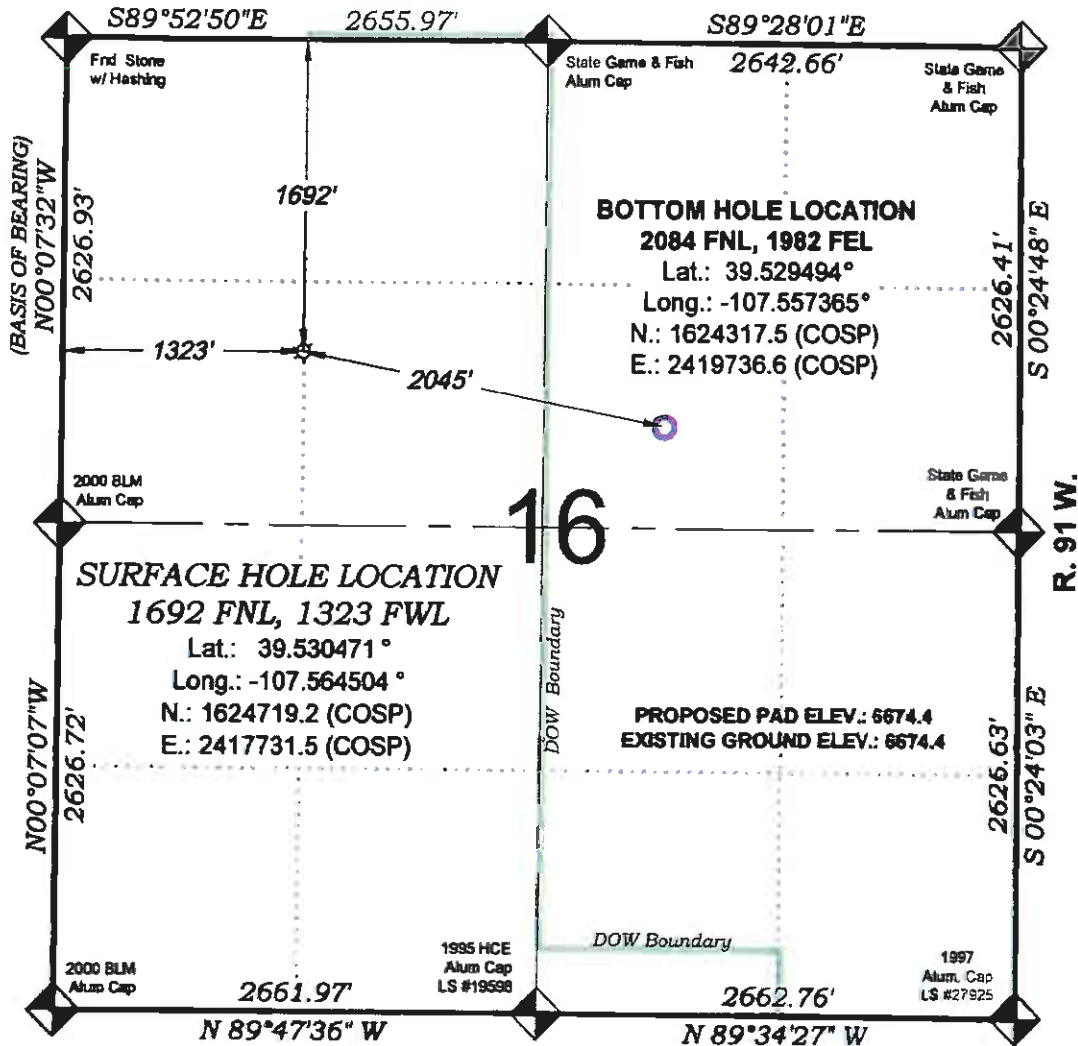


Jolley Family LLLP KP 532-16

T. 6 S.



SEE CONSTRUCTION LAYOUT
PLAT FOR VISIBLE IMPROVEMENTS
WITHIN 400' OF THIS LOCATION



SURVEYORS STATEMENT

I, MICHAEL J. LANGHORNE, A REGISTERED LAND SURVEYOR IN THE STATE OF COLORADO DO HEREBY CERTIFY THAT THE SURVEY SHOWN HEREON WAS PREPARED UNDER MY DIRECT SUPERVISION AND HAS BEEN STAKED ON THE GROUND AS SHOWN ON THE PLAT AND CHECKING THAT THE MAP IS A TRUE REPRESENTATION THEREOF.

MICHAEL J. LANGHORNE, COLORADO REGISTRATION NO. 36572
FOR AND ON BEHALF OF
BOOKCLIFF SURVEY SERVICES, INC.

REFERENCES

- 1) DEPENDENT RESURVEY T. 6 S., R. 91 W., 6th P.M. (OLD NOTES)
- 2) U.S.G.S. QUAD: NEW CASTLE, CO

- LEGEND -

FIELD LOCATED SECTION
MONUMENTS AS DESCRIBED

FIELD SURVEYED
WELL LOCATION

CALCULATED BOTTOM
HOLE LOCATION

CALCULATED SECTION
CORNER LOCATION

NOTES

- 1) ELEVATIONS BASED ON N.A.S.D. 1983 PUBLISHED COORDINATES.
- 2) LATITUDES AND LONGITUDES ARE BASED ON NAD 83, PUBLISHED COORDINATES.
- 3) STATE PLANE COORDINATES ARE BASED ON COLORADO CENTRAL ZONE U.S. SURVEY FEET.
- 4) ELEVATION MASK SET TO 15'.
- 5) GPS OPERATOR J. KIRKPATRICK OBSERVED A PDOP OF 0.8 FOR SURVEY POINT NUMBER 72000.
- 6) SURFACE AND BOTTOM HOLE LOCATIONS ARE MEASURED 90° FROM SECTION LINES.

WELL LOCATION PLAT Prepared for:

Williams Williams Production, RMT

SW1/4 NW1/4, SECTION 16
T. 6 S., R. 91 W. of the 6th P.M.
GARFIELD COUNTY, COLORADO

SURVEY DATE: 6/9/11

MAP DATE: 8/25/11

SCALE: 1" = 1000'

PLAT: 1 of 1

PROJECT: Williams Valley

100 East Third Street
Rt. 6, Colorado 81655
Ph: (970) 625-2720
Fax: (970) 625-3772

BOOKCLIFF
Survey Services, Inc.