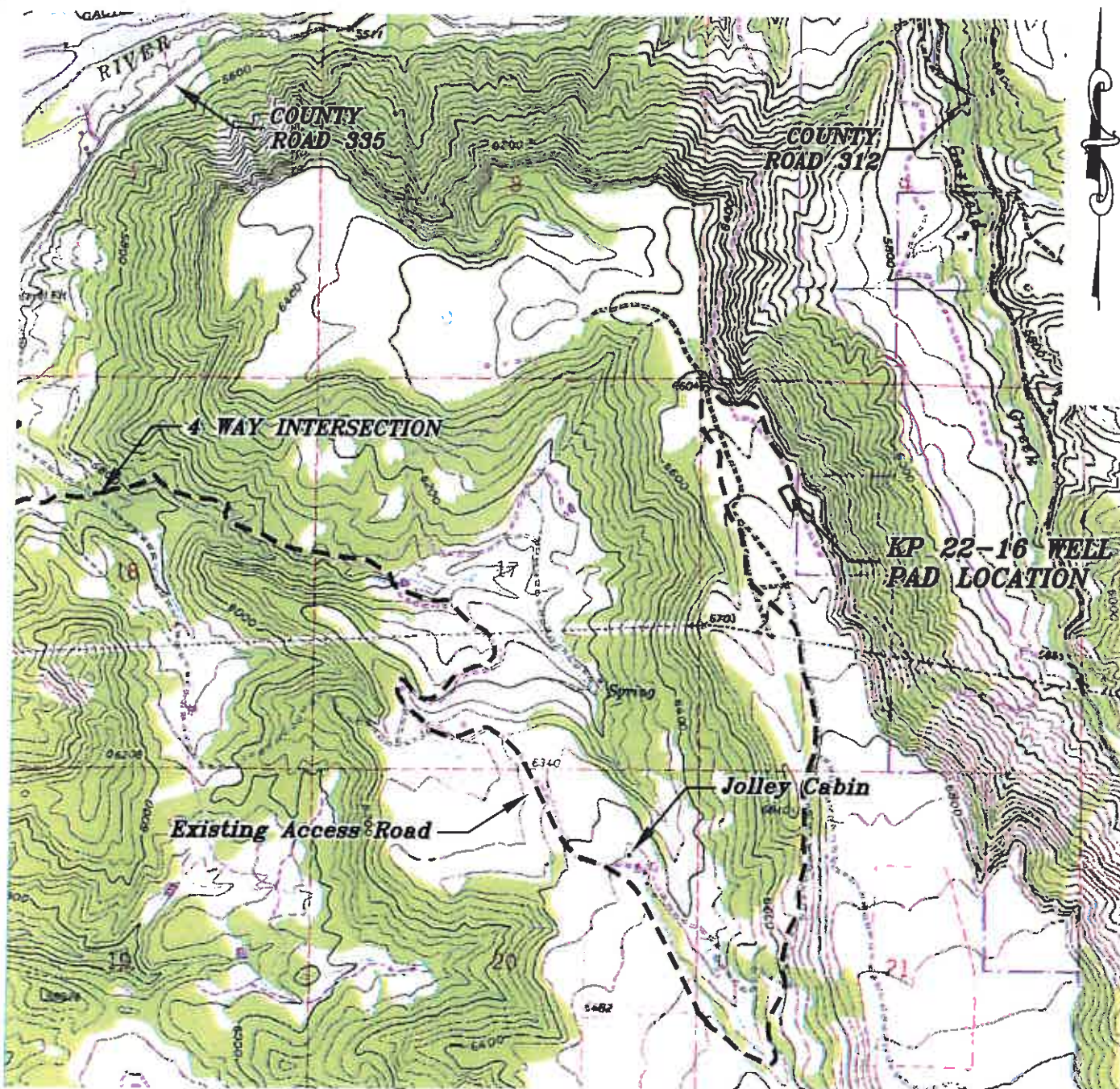


Section 16
T. 6 S., R 91 W



ACCESS DESCRIPTION:

FROM THE INTERSECTION OF COLORADO INTERSTATE 70 OVERPASS (Exit 97) AND RIVER FRONTAGE ROAD SOUTH OF SILT, COLORADO, PROCEED EAST ± 0.4 MILES ALONG RIVER FRONTAGE ROAD TO THE INTERSECTION WITH COUNTY ROAD 311 (DIVIDE CREEK ROAD), PROCEED ALONG DIVIDE CREEK ROAD ± 3.3 MILES TO THE INTERSECTION WITH A DIRT/GRAVEL ROAD (McLin Cutoff), PROCEED LEFT IN AN EASTERLY DIRECTION ± 1.0 MILES TO A FOUR-WAY INTERSECTION, PROCEED STRAIGHT IN A SOUTHEASTERLY DIRECTION ± 2.8 TO AN INTERSECTION WITH A DIRT/GRAVEL ROAD, PROCEED LEFT IN SOUTHEASTERLY TO NORTHERLY TO SOUTHERLY DIRECTION TO THE EXISTING KP 22-16 DRILL PAD LOCATION, AS SHOWN HEREON.

REVISED: 10/11/11

SCALE: 1" = 2000'
DATE: 8/29/11
PLAT: 5 of 7
PROJECT: Williams Kokopelli
DFT: cws

Construction Plan Prepared for:
Williams Williams Production, RMT

KP 22-16 Drill Pad - Plat 5
ACCESS ROAD MAP

224 East Third Street
Boulder, Colorado 80501
PH: (303) 440-1100
FAX: (303) 440-2272

BOOKCLIFF
Survey Services, Inc.