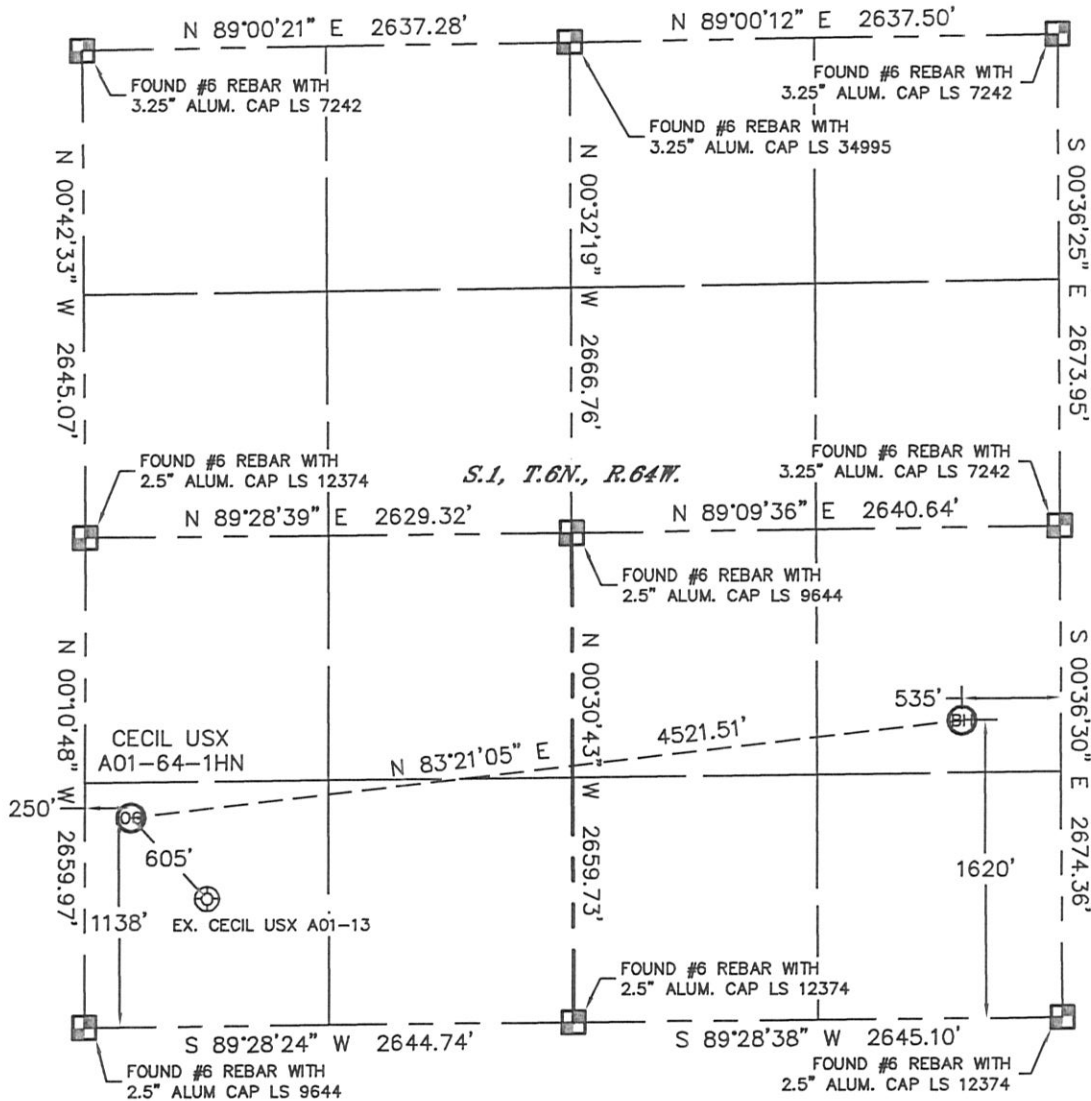


WELL LOCATION CERTIFICATE

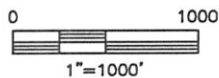
THIS MAP DOES NOT REPRESENT A BOUNDARY SURVEY

SECTION: 1
TOWNSHIP: 6N
RANGE: 64W



In accordance with a request from Jacob Rice with Noble Energy Inc. Lat40°, Inc. has determined the surface location of the CECIL USX A01-64-1HN to be 1138' from the SOUTH line and 250' from the WEST line and the bottom hole to be 1620' from the SOUTH line and 535' from the EAST line as measured at right angles from the section lines of Section 1, Township 6 North, Range 64 West of the Sixth Principal Meridian, County of Weld, State of Colorado.

I hereby state that this Well Location Certificate was prepared by me, or under my direct supervision, that the fieldwork was completed on 8/2/11, for and on behalf of Noble Energy Inc. That this is not a Land Survey Plat or an Improvement Survey Plat, and that it is not to be relied upon for establishment of fence, building, or other future improvement lines.



NOTE:

- 1) Bearings shown are Grid Bearings of the Colorado State Plane Coordinate System, North Zone, North American Datum 1983/2007. The lineal dimensions as contained herein are based upon the "U.S. Survey Foot."
- 2) Ground elevations are based on an observed GPS elevation (NAVD 1988 DATUM).
- 3) NEAREST EXISTING WELL: CECIL USX A01-13, 605'
- 4) IMPROVEMENTS: See LOCATION DRAWING for all visible improvements within 400' of disturbed area.
- 5) SURFACE USE: CROP FIELD/PIVOT CORNER
- 6) INSTRUMENT OPERATOR: ADAM KELLY



SURFACE LOCATION
LATITUDE: 40.51118°N
LONGITUDE: 104.50688°W
PDOP: 1.5
ELEV: 4749'
1/4, 1/4: SW1/4SW1/4
NEAREST PROPERTY LINE: 192' N

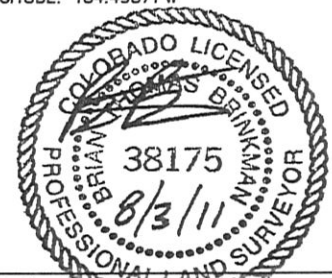
BOTTOM HOLE
LATITUDE: 40.51247°N
LONGITUDE: 104.49071°W

NOTE

According to Colorado law, you must commence any legal action based upon any defect in this W.L.C. within three years after you discover such defect. In no event, may any action based upon any defect in this survey be commenced more than ten years after the date of the certificate shown hereon. (13-80-105 C.R.S.)

LEGEND

-  = ALIQUOT MONUMENT AS DESCRIBED
-  = CALCULATED POSITION



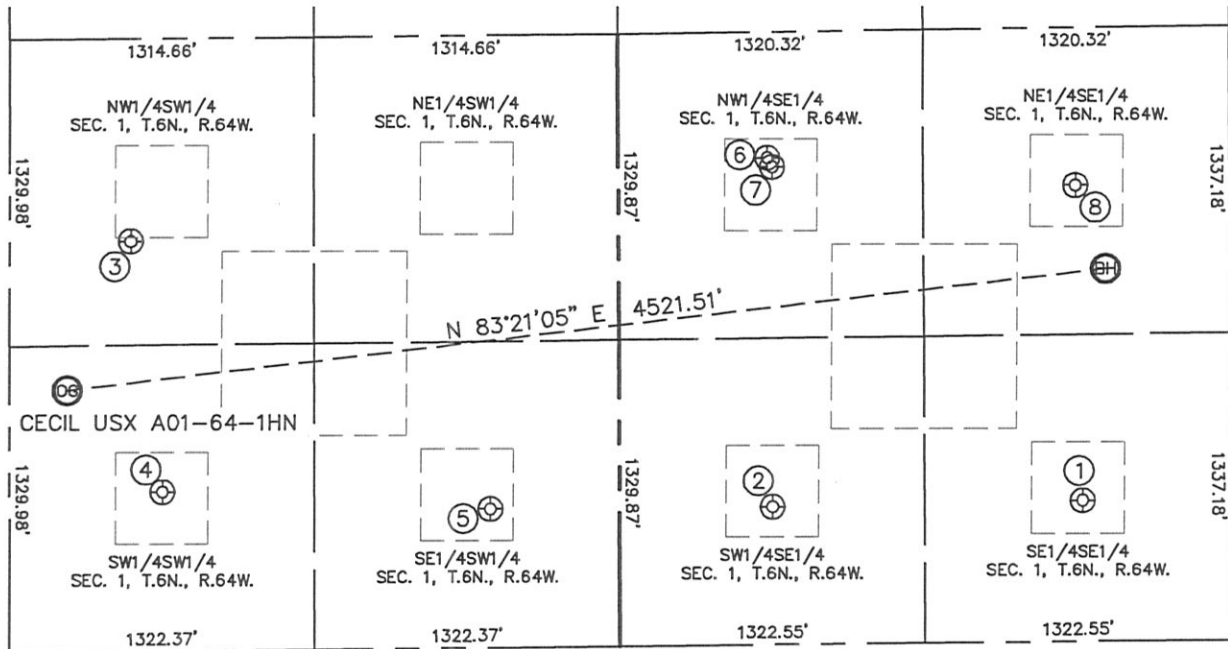
Brian T. Brinkman—On behalf of Lat40°, Inc.
Colorado Licensed Professional
Land Surveyor No. 38175

PROJECT#: 2011186

SITE SKETCH

CECIL USX A01-64-1HN

SECTION: 1
TOWNSHIP: 6N
RANGE: 64W



- | | | | |
|---|---|--|---|
| <p>①</p> <p>CECIL USX A1-16
SE1/4SE1/4
613' FSL
640' FEL
LAT-40.50971N
LONG-104.49109W
PDOP:1.8
ELEV: 4716'</p> | <p>②</p> <p>CECIL USX A01-15
SW1/4SE1/4
599' FSL
1981' FEL
LAT-40.50968N
LONG-104.49592W
PDOP:1.2
ELEV: 4728'</p> | <p>③</p> <p>CECIL 13-1
NW1/4SW1/4
1780' FSL
524' FWL
LAT-40.51294N
LONG-104.50588W
PDOP:1.4
ELEV: 4754'</p> | <p>④</p> <p>CECIL USX A01-13
SW1/4SW1/4
692' FSL
663' FWL
LAT-40.50995N
LONG-104.50541W
PDOP:1.2
ELEV: 4738'</p> |
| <p>⑤</p> <p>CECIL USX A 1-14
SE1/4SW1/4
602' FSL
2081' FWL
LAT-40.50970N
LONG-104.50031W
PDOP:1.6
ELEV: 4745'</p> | <p>⑥</p> <p>CECIL USX A01-11D
NW1/4SE1/4
2115' FSL
1996' FEL
LAT-40.51384N
LONG-104.49597W
PDOP:1.3
ELEV: 4740'</p> | <p>⑦</p> <p>CECIL USX A 1-10
NW1/4SE1/4
2075' FSL
1975' FEL
LAT-40.51373N
LONG-104.49589W
PDOP:1.9
ELEV: 4739'</p> | <p>⑧</p> <p>CECIL USX A01-09
NE1/4SE1/4
1983' FSL
664' FEL
LAT-40.51347N
LONG-104.49118W
PDOP:2.0
ELEV: 4751'</p> |

