

LEGEND:

PROPOSED LOCATION



WEXPRO COMPANY

**ACE UNIT #14, #17, #18 & #19
SECTION 28, T12N, R97W, 6th P.M.
NE 1/4 SE 1/4**



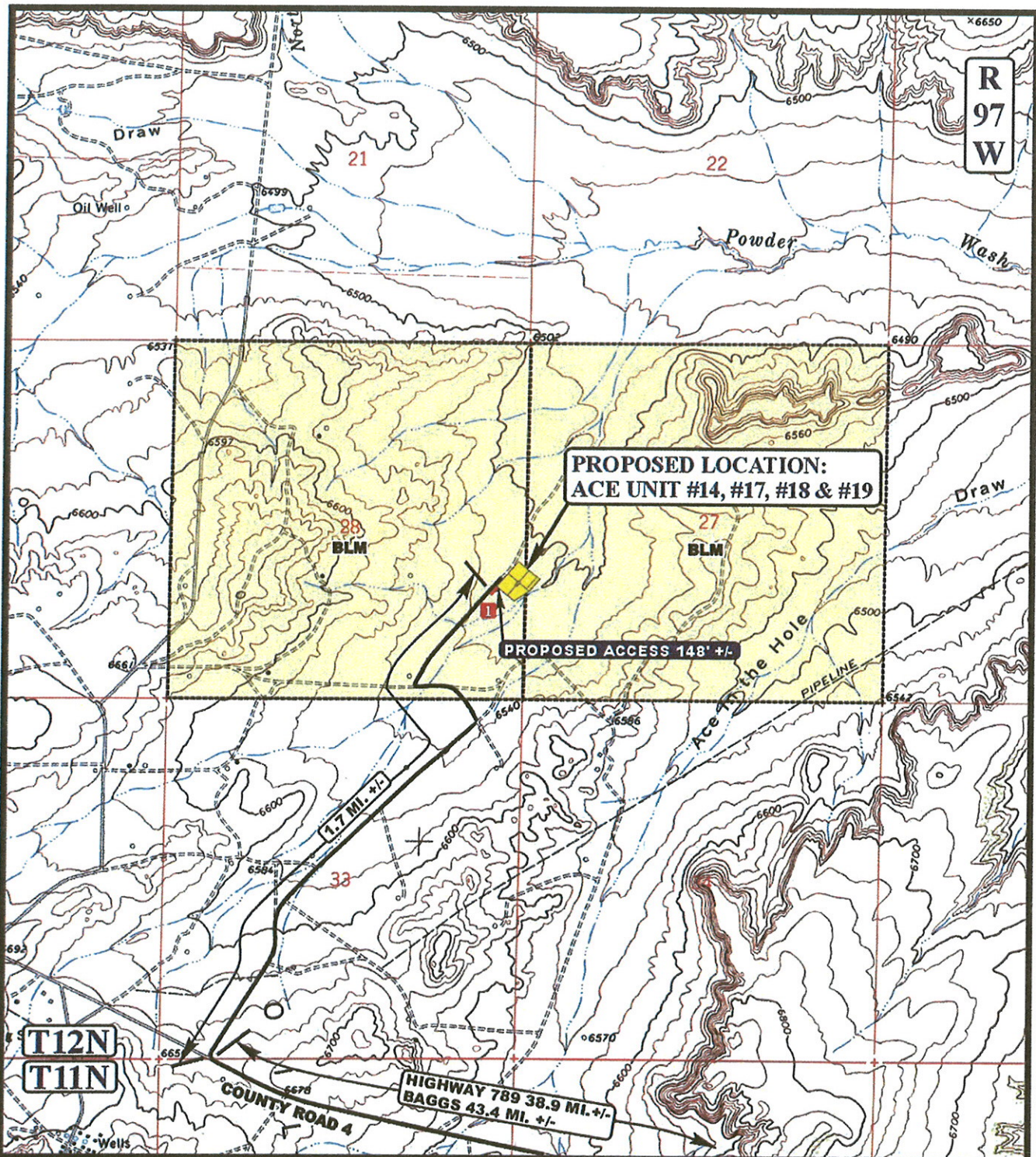
Uintah Engineering & Land Surveying
85 South 200 East Vernal, Utah 84078
(435) 789-1017 * FAX (435) 789-1813

**ACCESS ROAD
MAP**

09 02 08
MONTH DAY YEAR

SCALE: 1:100,000 DRAWN BY: J.H. REV: C.A.G. 07-14-11





LEGEND:

- EXISTING ROAD
- - - PROPOSED ACCESS ROAD
- 1 18" CMP REQUIRED



WEXPRO COMPANY

ACE UNIT #14, #17, #18 & #19
SECTION 28, T12N, R97W, 6th P.M.
NE 1/4 SE 1/4



Uintah Engineering & Land Surveying
85 South 200 East Vernal, Utah 84078
(435) 789-1017 * FAX (435) 789-1813

ACCESS ROAD
MAP
09 02 08
MONTH DAY YEAR
SCALE: 1" = 2000' DRAWN BY: J.H. REV: C.A.G. 07-14-11

