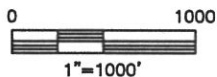
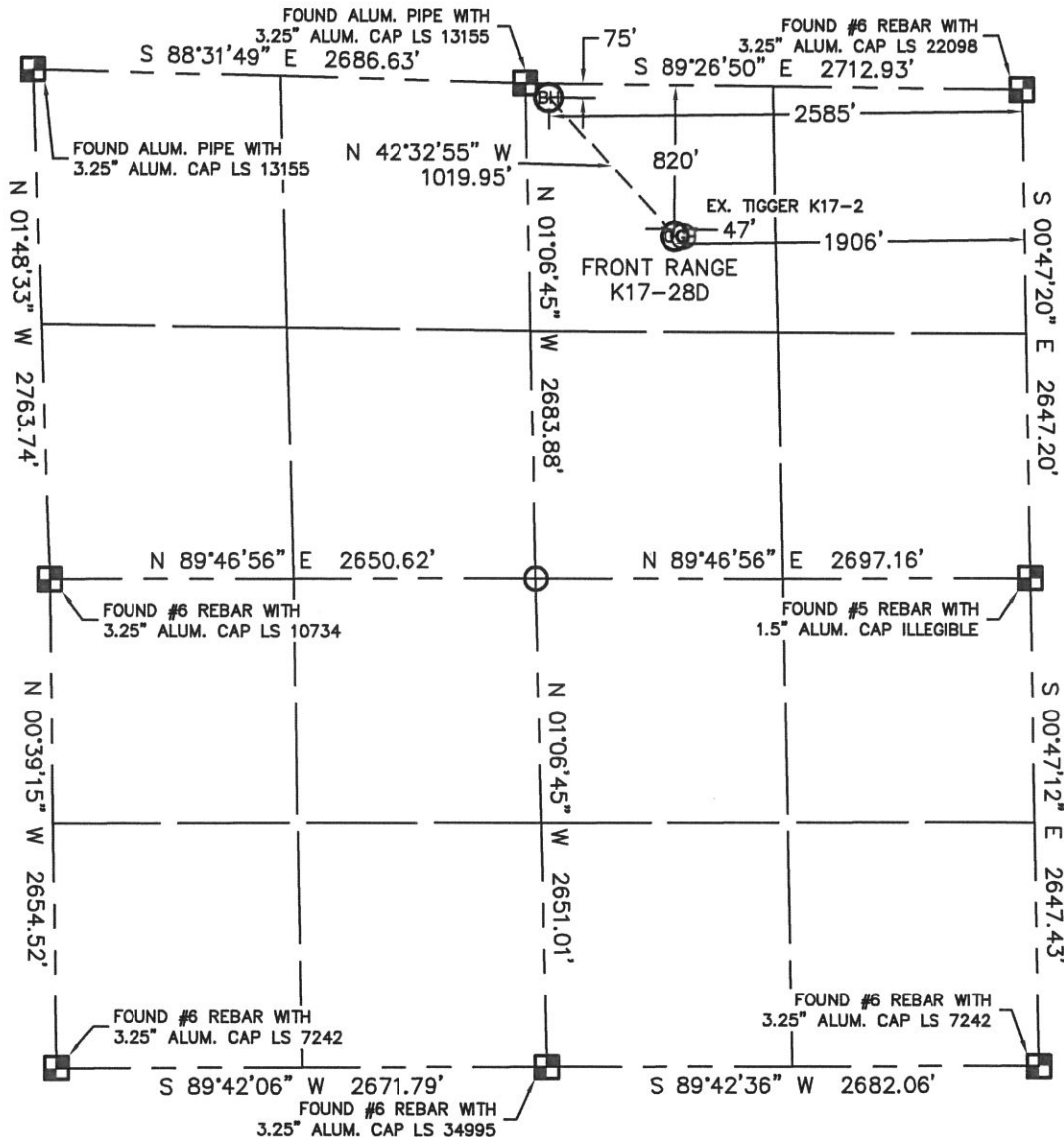


Lat40°, LLC 1635 Foxtrail Drive, Suite 325 Loveland, CO 80538

# WELL LOCATION CERTIFICATE

THIS MAP DOES NOT REPRESENT A BOUNDARY SURVEY

SECTION: 17  
TOWNSHIP: 4N  
RANGE: 66W



In accordance with a request from Robbie Miller with Noble Energy Inc.

Lat40°, LLC has determined the surface location of the FRONT RANGE K17-28D to be 820' from the NORTH line and 1906' from the EAST line and the bottom hole to be 75' from the NORTH line and 2585' from the EAST line as measured at right angles from the section lines of Section 17, Township 4 North, Range 66 West of the Sixth Principal Meridian, County of Weld, State of Colorado.

I hereby state that this Well Location Certificate was prepared by me, or under my direct supervision, that the fieldwork was completed on 9-14-10, for and on behalf of Noble Energy Inc. That this is not a Land Survey Plat or an Improvement Survey Plat, and that it is not to be relied upon for establishment of fence, building, or other future Improvement lines.

## NOTE:

- 1) Bearings shown are Grid Bearings of the Colorado State Plane Coordinate System, North Zone, North American Datum 1983/2007. The lineal dimensions as contained herein are based upon the "U.S. Survey Foot."
- 2) Ground elevations are based on an observed GPS elevation (NAVD 1988 DATUM).
- 3) NEAREST EXISTING WELL: TIGGER K17-2 47'
- 4) IMPROVEMENTS: See LOCATION DRAWING for all visible improvements within 400' of disturbed area.
- 5) SURFACE USE: RANGELAND, EX. WELL SITE
- 6) INSTRUMENT OPERATOR: BRIAN BRINKMAN

SURFACE LOCATION  
LATITUDE: 40.31675°N  
LONGITUDE: 104.79878°W  
PDOP: 1.2  
ELEV: 4705  
1/4, 1/4: NW1/4NE1/4  
NEAREST PROPERTY LINE: 802' WEST

BOTTOM HOLE  
LATITUDE: 40.31883°N  
LONGITUDE: 104.80123°W

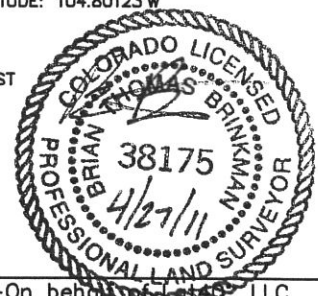
## NOTE

According to Colorado law, you must commence any legal action based upon any defect in this W.L.C. within three years after you discover such defect. In no event, may any action based upon any defect in this survey be commenced more than ten years after the date of the certificate shown hereon. (13-80-105 C.R.S.)

## LEGEND

- = ALIQUOT MONUMENT AS DESCRIBED
- = CALCULATED POSITION

Brian T. Brinkman—On behalf of Lat40°, LLC  
Colorado Licensed Professional  
Land Surveyor No. 38175 PROJECT#: 2010117

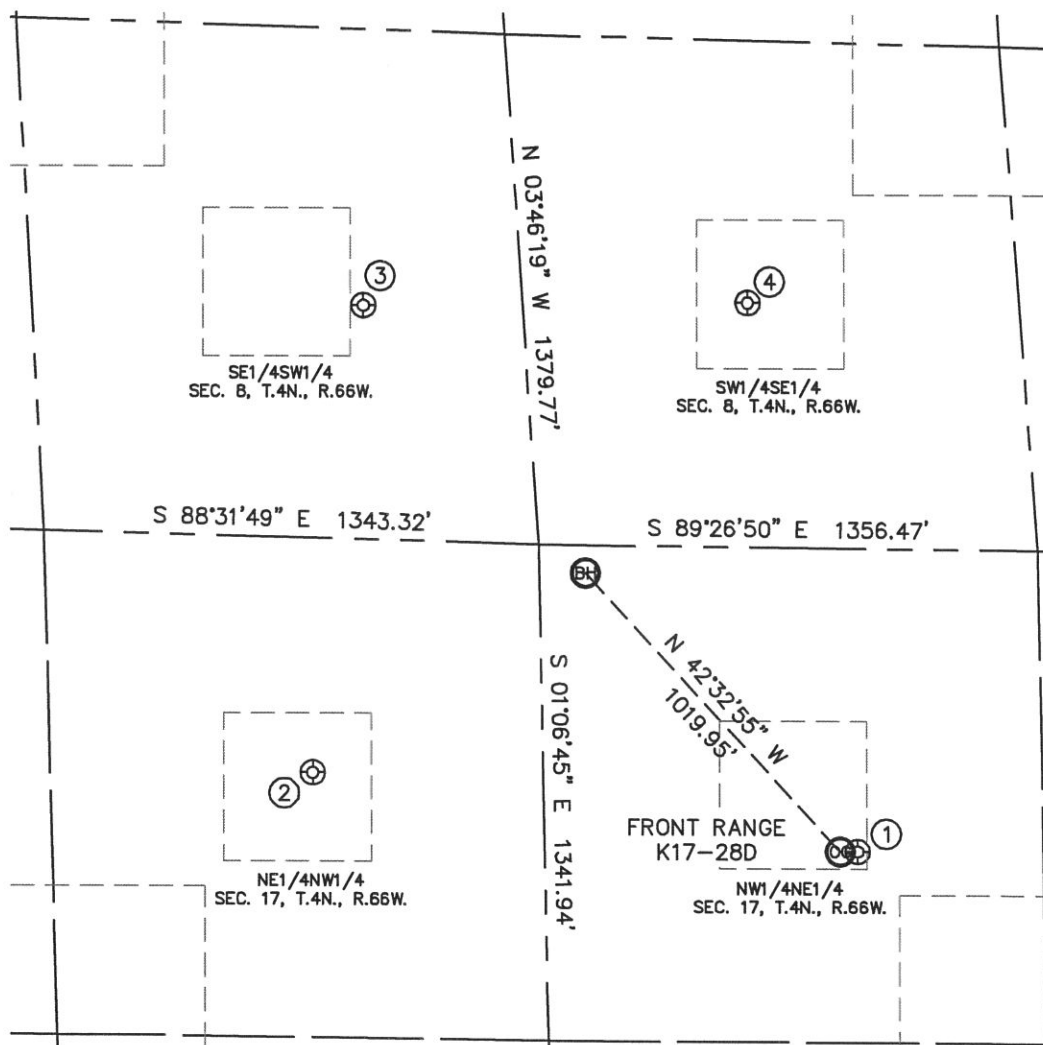


Lat40°, LLC 1635 Foxtrail Drive, Suite 325 Loveland, CO 80538

# SITE SKETCH

FRONT RANGE K17-28D

SECTION: 17  
TOWNSHIP: 4N  
RANGE: 66W



①  
TIGGER K17-2  
NW1/4NE1/4  
819' FNL  
1858' FEL  
LAT-40.31675°N  
LONG-104.79861°W  
PDOP: 1.3  
ELEV: 4706

②  
LEWS #2-20  
NE1/4NW1/4  
634' FNL  
2049' FWL  
LAT-40.31736°N  
LONG-104.80391°W  
PDOP: 1.7  
ELEV: 4706

③  
MONFORT GILCREST K8-14  
SE1/4SW1/4  
631' FSL  
2231' FWL  
LAT-40.32082°N  
LONG-104.80338°W  
PDOP: 1.0  
ELEV: 4705

④  
MONFORT GILCREST K8-15  
SW1/4SE1/4  
660' FSL  
2080' FEL  
LAT-40.32083°N  
LONG-104.79963°W  
PDOP: 1.7  
ELEV: 4704

