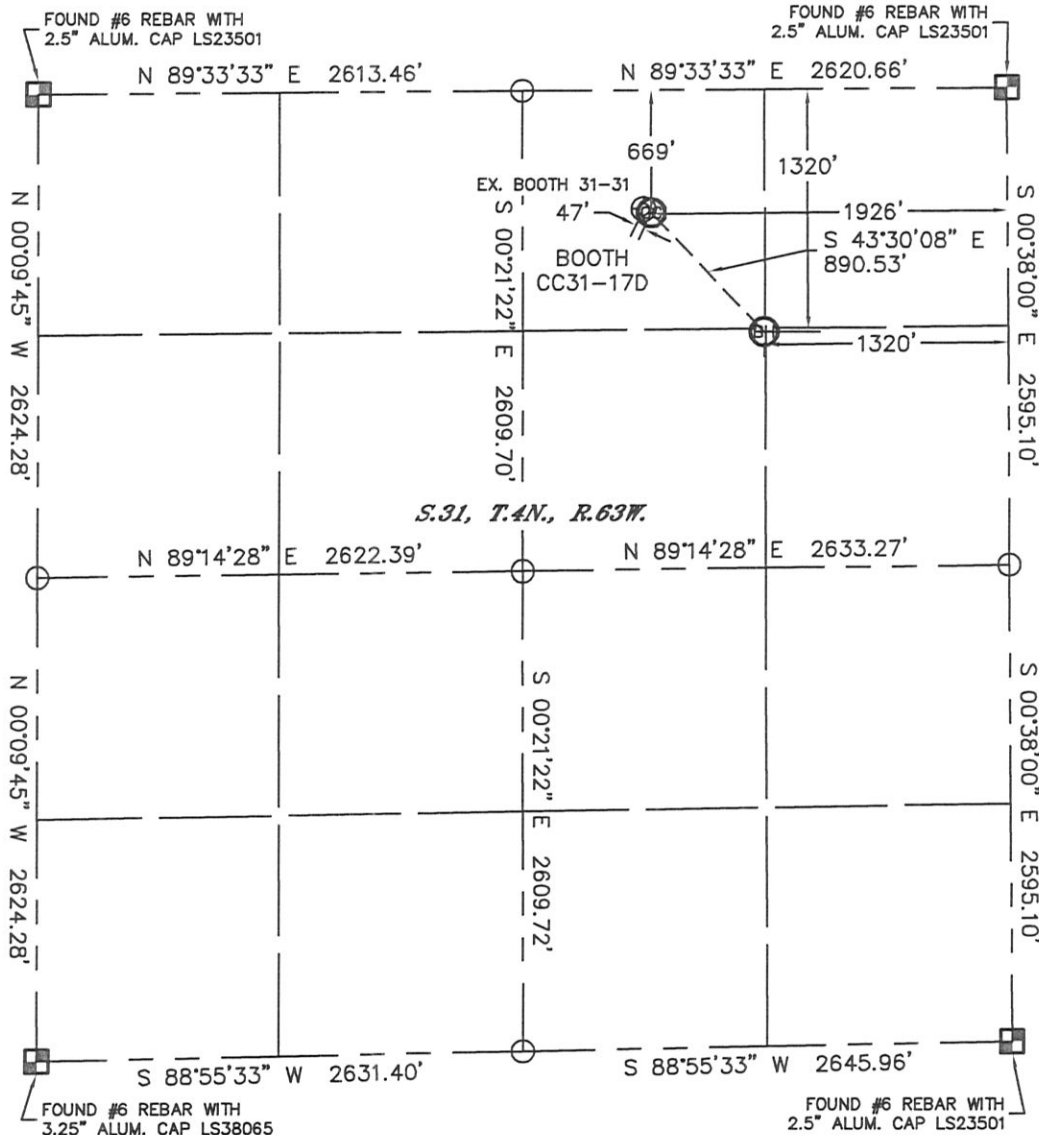


WELL LOCATION CERTIFICATE

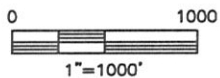
THIS MAP DOES NOT REPRESENT A BOUNDARY SURVEY

SECTION: 31
TOWNSHIP: 4N
RANGE: 63W



In accordance with a request from Matt Verbit with Noble Energy Inc., Lat40°, Inc. has determined the surface location of the BOOTH CC31-17D to be 669' from the NORTH line and 1926' from the EAST line and the bottom hole to be 1320' from the NORTH line and 1320' from the EAST line as measured at right angles from the section lines of Section 31, Township 4 North, Range 63 West of the Sixth Principal Meridian, County of Weld, State of Colorado.

I hereby state that this Well Location Certificate was prepared by me, or under my direct supervision, that the fieldwork was completed on 8/10/2011, for and on behalf of Noble Energy Inc.. That this is not a Land Survey Plat or an Improvement Survey Plat, and that it is not to be relied upon for establishment of fence, building, or other future improvement lines.



NOTE:

- 1) Bearings shown are Grid Bearings of the Colorado State Plane Coordinate System, North Zone, North American Datum 1983/2007. The lineal dimensions as contained herein are based upon the "U.S. Survey Foot."
- 2) Ground elevations are based on an observed GPS elevation (NAVD 1988 DATUM).
- 3) NEAREST EXISTING WELL: BOOTH 31-31, 47'
- 4) IMPROVEMENTS: See LOCATION DRAWING for all visible improvements within 400' of disturbed area.
- 5) SURFACE USE: EX. PAD SITE/RANGELAND
- 6) INSTRUMENT OPERATOR: ADAM KELLY

NOTE

According to Colorado law, you must commence any legal action based upon any defect in this W.L.C. within three years after you discover such defect. In no event, may any action based upon any defect in this survey be commenced more than ten years after the date of the certificate shown hereon. (13-80-105 C.R.S.)



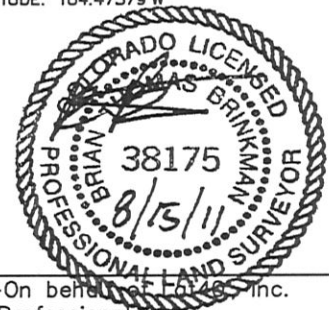
= ALIQUOT MONUMENT AS DESCRIBED



= CALCULATED POSITION

SURFACE LOCATION
LATITUDE: 40.27424°N
LONGITUDE: 104.47796°W
PDOP: 1.5
ELEV: 4784'
1/4, 1/4: NW1/4NE1/4
NEAREST PROPERTY LINE: 669' N

BOTTOM HOLE
LATITUDE: 40.27245°N
LONGITUDE: 104.47579°W

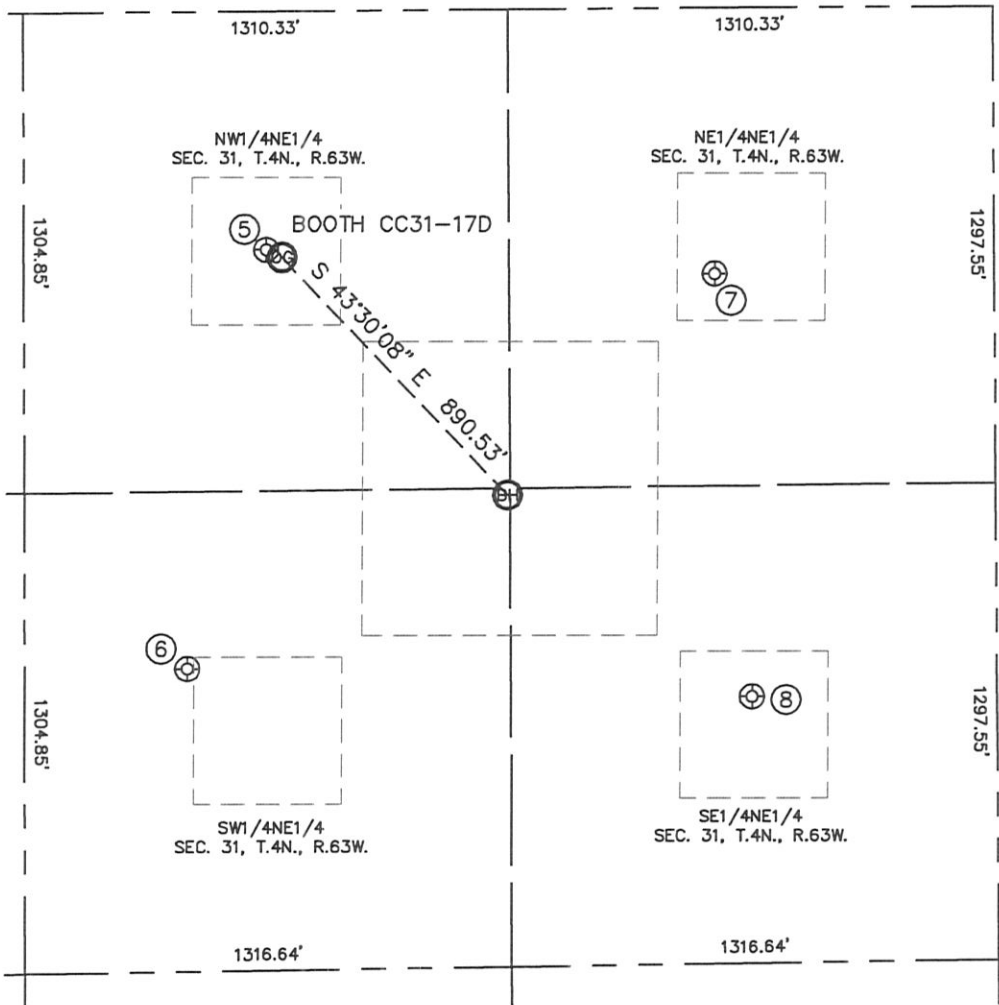


Brian T. Brinkman—On behalf of Lat40°, Inc.
Colorado Licensed Professional
Land Surveyor No. 38175

PROJECT#: 2011199

SITE SKETCH
BOOTH CC31-17D

SECTION: 31
TOWNSHIP: 4N
RANGE: 63W



⑤
BOOTH 31-31
NW1/4NE1/4
649' FNL
1968' FEL
LAT-40.27430°N
LONG-104.47811°W
PDOP: 2.2
ELEV: 4784'

⑥
BOOTH 32-31
SW1/4NE1/4
1784' FNL
2189' FEL
LAT-40.27118°N
LONG-104.47890°W
PDOP: 2.2
ELEV: 4786'

⑦
BOOTH 41-31
NE1/4NE1/4
723' FNL
755' FEL
LAT-40.27408°N
LONG-104.47377°W
PDOP: 2.1
ELEV: 4790'

⑧
BOOTH 42-31
SE1/4NE1/4
1873' FNL
662' FEL
LAT-40.27092°N
LONG-104.47343°W
PDOP: 0.9
ELEV: 4793'

