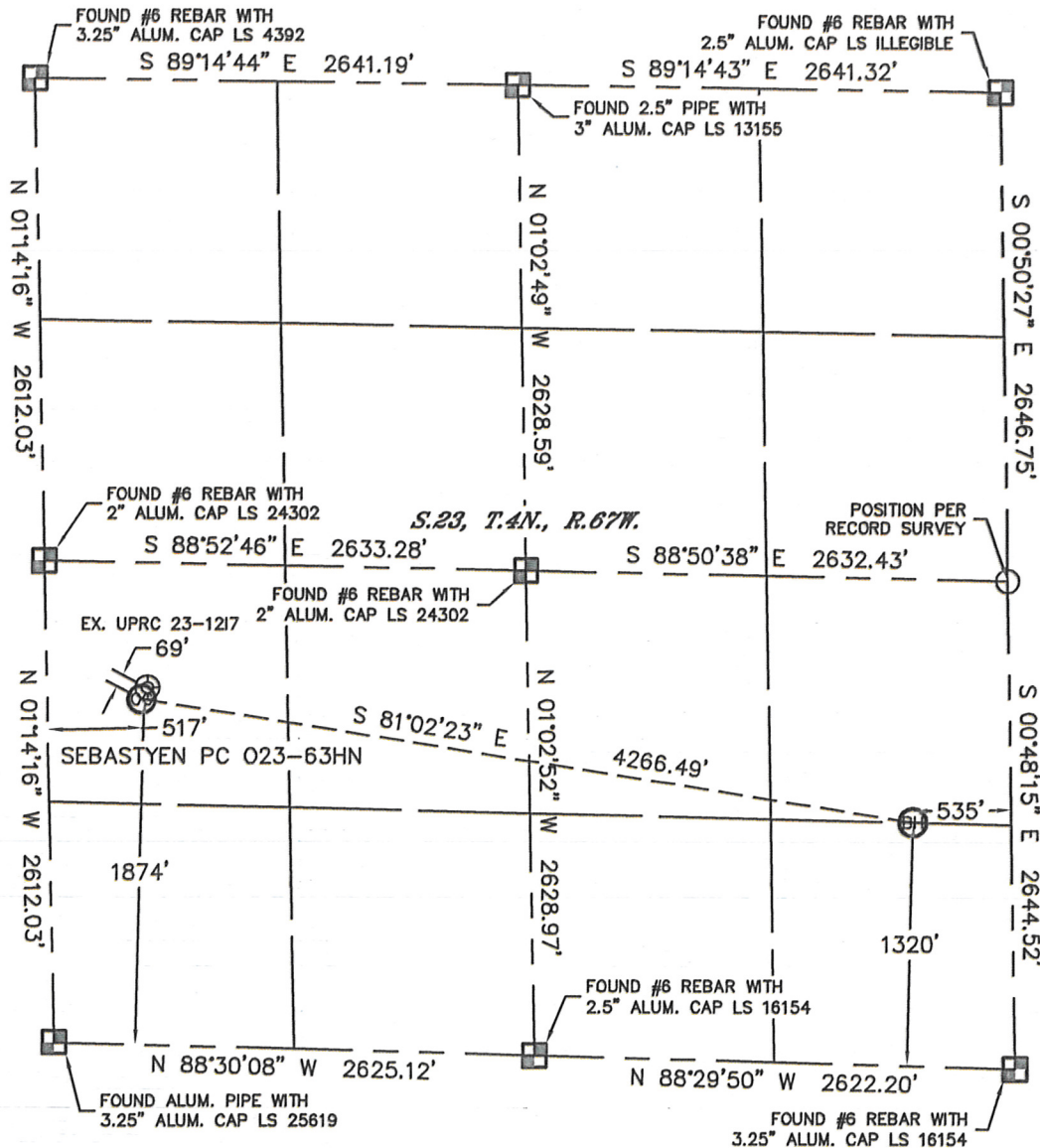


WELL LOCATION CERTIFICATE

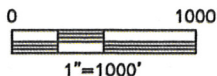
SECTION: 23
TOWNSHIP: 4N
RANGE: 67W

THIS MAP DOES NOT REPRESENT A BOUNDARY SURVEY



In accordance with a request from Erik Van Decar with Noble Energy Inc. Lat40°, Inc. has determined the surface location of the SEBASTYEN PC 023-63HN to be 1874' from the SOUTH line and 517' from the WEST line and the bottom hole to be 1320' from the SOUTH line and 535' from the EAST line as measured at right angles from the section lines of Section 23, Township 4 North, Range 67 West of the Sixth Principal Meridian, Town of Milliken, County of Weld, State of Colorado.

I hereby state that this Well Location Certificate was prepared by me, or under my direct supervision, that the fieldwork was completed on 5/20/11, for and on behalf of Noble Energy Inc. That this is not a Land Survey Plat or an Improvement Survey Plat, and that it is not to be relied upon for establishment of fence, building, or other future improvement lines.



NOTE:

- 1) Bearings shown are Grid Bearings of the Colorado State Plane Coordinate System, North Zone, North American Datum 1983/2007. The lineal dimensions as contained herein are based upon the "U.S. Survey Foot."
- 2) Ground elevations are based on an observed GPS elevation (NAVD 1988 DATUM).
- 3) NEAREST EXISTING WELL: UPRC 23-1217, 69'
- 4) IMPROVEMENTS: See LOCATION DRAWING for all visible improvements within 400' of disturbed area.
- 5) SURFACE USE: CROP FIELD, EX. WELL SITE
- 6) INSTRUMENT OPERATOR: ADAM KELLY

SURFACE LOCATION
LATITUDE: 40.29571°N
LONGITUDE: 104.86562°W
PDOP: 1.2
ELEV: 4915'
1/4, 1/4: NW1/4SW1/4
NEAREST PROPERTY LINE: 517' WEST

BOTTOM HOLE
LATITUDE: 40.29380°N
LONGITUDE: 104.85054°W

NOTE

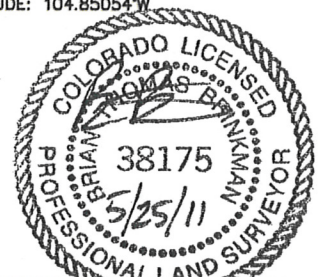
According to Colorado law, you must commence any legal action based upon any defect in this W.L.C. within three years after you discover such defect. In no event, may any action based upon any defect in this survey be commenced more than ten years after the date of the certificate shown hereon. (13-80-105 C.R.S.)

LEGEND

- = ALIQUOT MONUMENT AS DESCRIBED
 = CALCULATED POSITION

Brian T. Brinkman—On behalf of Lat40°, Inc.
Colorado Licensed Professional
Land Surveyor No. 38175

PROJECT#: 2011114

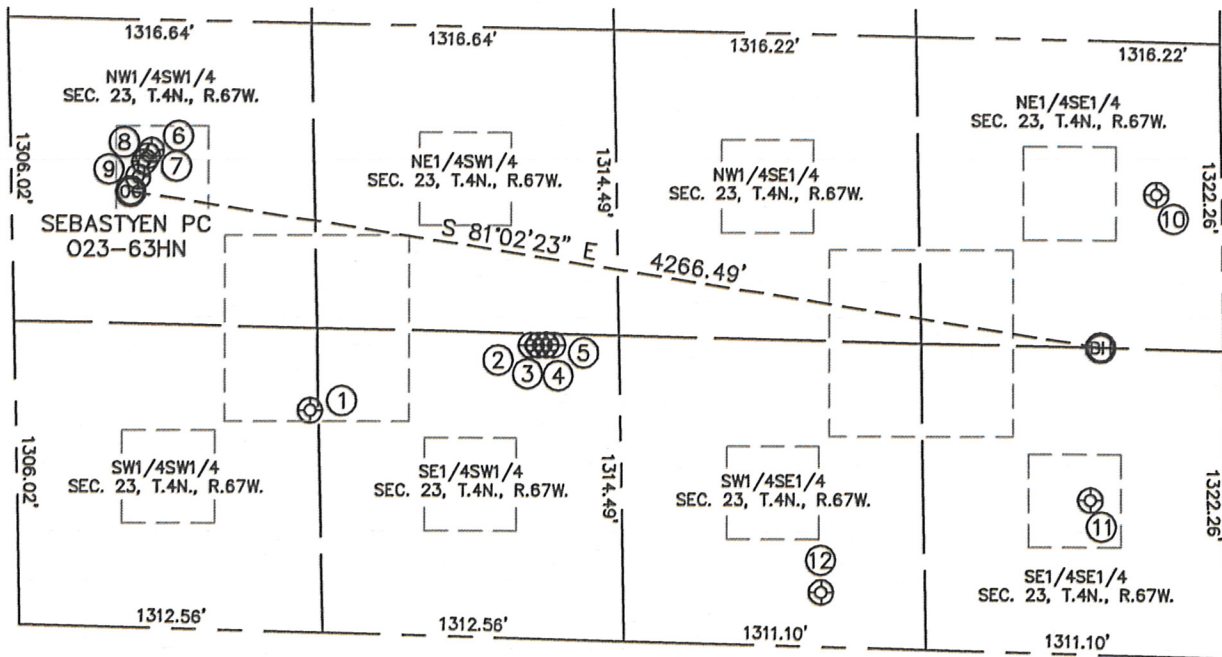


Lat40°, Inc. 1635 Foxtrail Drive, Suite 325 Loveland, CO 970-776-3321

SITE SKETCH

SEBASTYEN PC 023-63HN

SECTION: 23
TOWNSHIP: 4N
RANGE: 67W



①

LOT 0 23-25
SW1/4SW1/4
955' FSL
1276' FWL
LAT-40.29312N
LONG-104.86285W
PDOP: 2.0
ELEV: 4879'

②

UPRC 23-1117
SE1/4SW1/4
1261' FSL
2242' FWL
LAT-40.29387N
LONG-104.85941W
PDOP: 3.0
ELEV: 4892'

③

UPRC 23-717
SE1/4SW1/4
1262' FSL
2275' FWL
LAT-40.29387N
LONG-104.85929W
PDOP: 3.0
ELEV: 4891'

④

UPRC 23-1017
SE1/4SW1/4
1264' FSL
2309' FWL
LAT-40.29387N
LONG-104.85916W
PDOP: 4.4
ELEV: 4892'

⑤

UPRC 23-1417
SE1/4SW1/4
1264' FSL
2340' FWL
LAT-40.29387N
LONG-104.85905W
PDOP: 2.2
ELEV: 4891'

⑥

UPRC 23-617
NW1/4SW1/4
2053' FSL
611' FWL
LAT-40.29620N
LONG-104.86529W
PDOP: 1.6
ELEV: 4914'

⑦

UPRC 23-517
NW1/4SW1/4
2027' FSL
595' FWL
LAT-40.29613N
LONG-104.86535W
PDOP: 3.1
ELEV: 4914'

⑧

UPRC 23-1317
NW1/4SW1/4
2002' FSL
578' FWL
LAT-40.29606N
LONG-104.86541W
PDOP: 3.9
ELEV: 4915'

⑨

UPRC 23-1217
NW1/4SW1/4
1937' FSL
550' FWL
LAT-40.29588N
LONG-104.86551W
PDOP: 2.1
ELEV: 4915'

⑩

EHRlich 23-41
NE1/4SE1/4
1985' FSL
284' FEL
LAT-40.29561N
LONG-104.84965W
PDOP: 1.1
ELEV: 4776'

⑪

WOLFSON 23-16
SE1/4SE1/4
664' FSL
588' FEL
LAT-40.29201N
LONG-104.85071W
PDOP: 1.2
ELEV: 4731'

⑫

WOLFSON 23-15
SW1/4SE1/4
235' FSL
1762' FEL
LAT-40.29094N
LONG-104.85491W
PDOP: 2.3
ELEV: 4788'

