

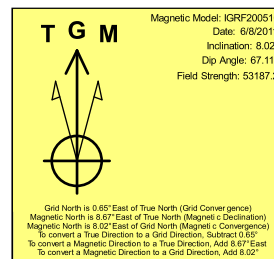
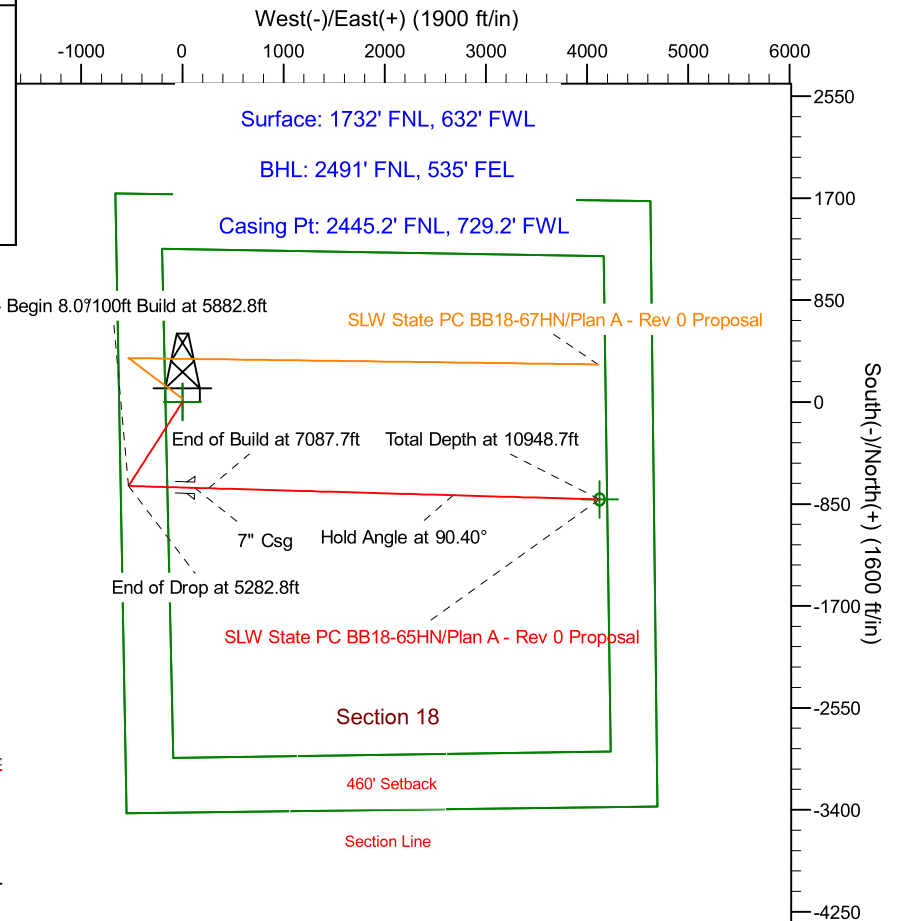
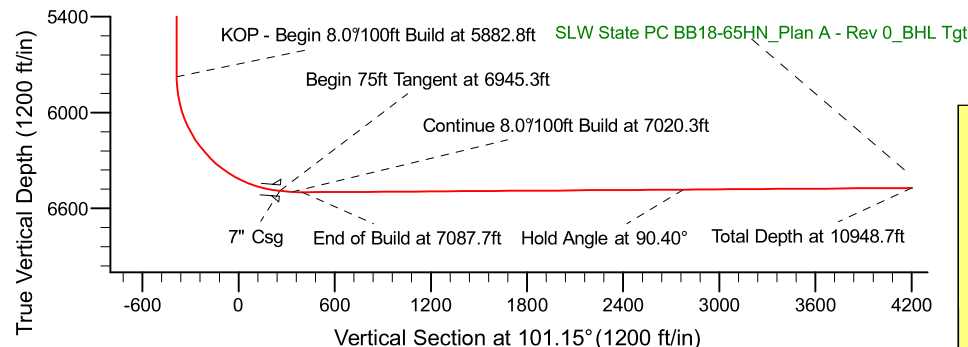
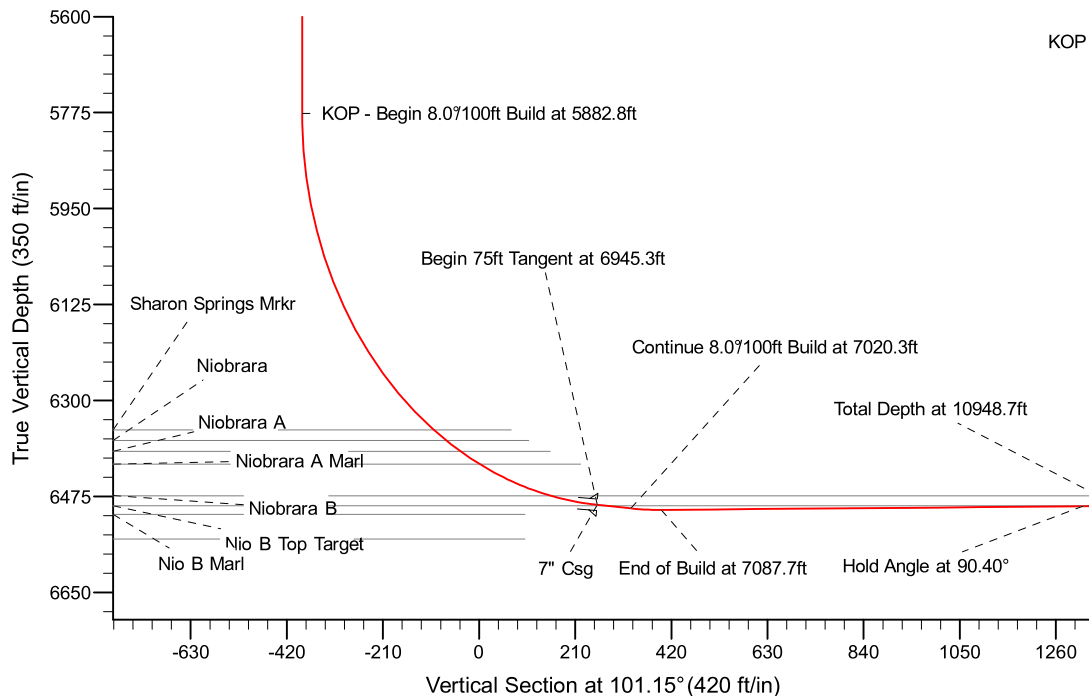
Project: Weld County Colorado (NAD 83)
 Site: Sec.18, T5N, R63W
 Well: SLW State PC BB18-65HN
 Wellbore: Plan A - Rev 0 (PERMITTING PLAN ONLY)
 Design: Plan A - Rev 0 Proposal

Noble Energy

HALLIBURTON
 Sperry Drilling

SECTION DETAILS

Sec	MD	Inc	Azi	TVD	+N/-S	+E/-W	Dleg	TFace	VSect	Target
1	0.0	0.00	0.00	0.0	0.0	0.0	0.00	0.00	0.0	
2	1200.0	0.00	0.00	1200.0	0.0	0.0	0.00	0.00	0.0	
3	1781.1	14.53	217.23	1774.9	-58.3	-44.3	2.50	217.23	-32.2	
4	4701.7	14.53	217.23	4602.1	-641.7	-487.7	0.00	0.00	-354.4	
5	5282.8	0.00	0.00	5177.0	-700.0	-532.0	2.50	180.00	-386.7	
6	5882.8	0.00	0.00	5777.0	-700.0	-532.0	0.00	0.00	-386.7	
7	6945.3	85.00	91.38	6490.5	-715.7	121.6	8.00	91.38	257.6	
8	7020.3	85.00	91.38	6497.0	-717.5	196.3	0.00	0.00	331.3	
9	7087.8	90.40	91.38	6499.7	-719.2	263.7	8.00	0.00	397.7	
10	10948.7	90.40	91.39	6472.7	-812.4	4123.4	0.00	65.32	4202.6	SLW State PC BB18-65HN_Plan A - Rev 0_BHL Tgt-



WELL DETAILS: SLW State PC BB18-65HN(NAD83 Geodetic System)

Ground Level: 4590.0
 Northing: 423876.39 Easting: 1000405.51 Latitude: 40°24' 4.896 N Longitude: 104°29' 12.624 W

Plan: Plan A - Rev 0 Proposal (SLW State PC BB18-65HN/Plan A - Rev 0 (PERMITTING PLAN ONLY))

Created By: Erasmo Mendoza Date: 14:14, June 09 2011

OK to submit with 2A as per Noble Drilling
6/9/2011 14:23