

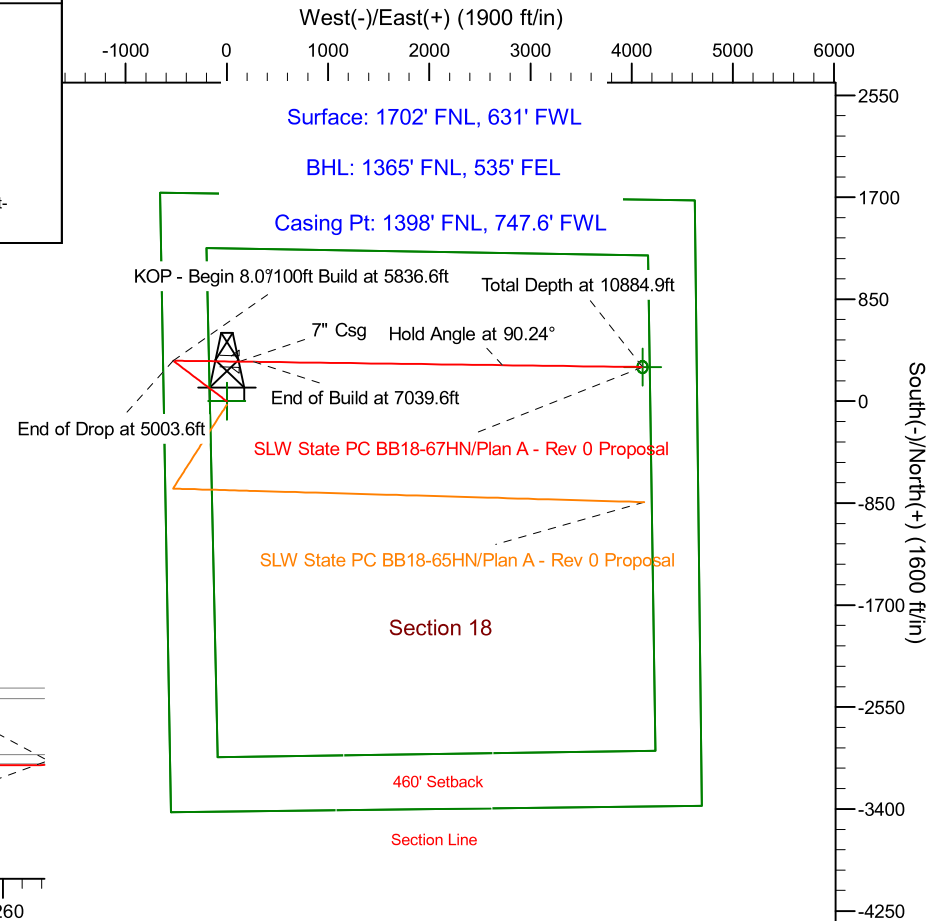
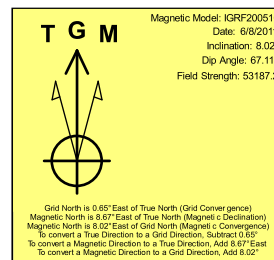
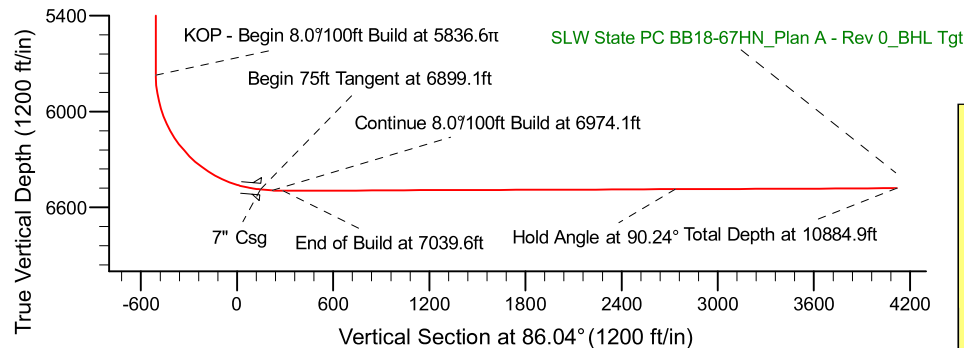
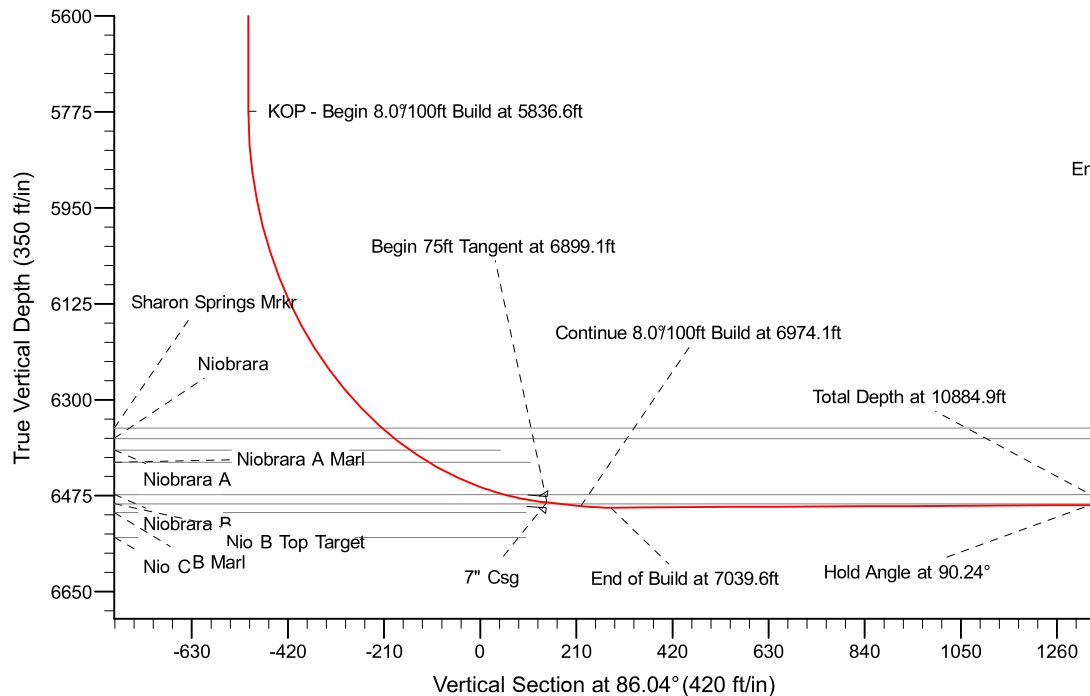
Project: Weld County Colorado (NAD 83)
 Site: Sec.18, T5N, R63W
 Well: SLW State PC BB18-67HN
 Wellbore: Plan A - Rev 0 (PERMITTING PLAN ONLY)
 Design: Plan A - Rev 0 Proposal

Noble Energy

HALLIBURTON
 Sperry Drilling

SECTION DETAILS

Sec	MD	Inc	Azi	TVD	+N/-S	+E/-W	Dleg	TFace	VSect	Target
1	0.0	0.00	0.00	0.0	0.0	0.0	0.00	0.00	0.0	
2	1500.0	0.00	0.00	1500.0	0.0	0.0	0.00	0.00	0.0	
3	1979.9	12.00	302.40	1976.4	26.8	-42.3	2.50	302.40	-40.3	
4	4523.6	12.00	302.40	4464.6	310.2	-488.7	0.00	0.00	-466.2	
5	5003.6	0.00	0.00	4941.0	337.0	-531.0	2.50	180.00	-506.5	
6	5836.6	0.00	0.00	5774.0	337.0	-531.0	0.00	0.00	-506.5	
7	6899.1	85.00	90.65	6487.5	329.6	122.7	8.00	90.65	145.2	
8	6974.1	85.00	90.65	6494.0	328.7	197.4	0.00	0.00	219.7	
9	7039.6	90.24	90.65	6496.7	328.0	262.9	8.00	0.00	284.9	
10	10884.9	90.24	90.66	6480.7	284.1	4107.9	0.00	116.33	4117.7	SLW State PC BB18-67HN_Plan A - Rev 0_BHL Tgt-



WELL DETAILS: SLW State PC BB18-67HN(NAD83 Geodetic System)

Ground Level: 4589.0
 Northing: 423885.27 Easting: 1000405.41 Latitude: 40°24' 5.184 N Longitude: 104°29' 12.624 W

Plan: Plan A - Rev 0 Proposal (SLW State PC BB18-67HN/Plan A - Rev 0 (PERMITTING PLAN ONLY))

Created By: Erasmo Mendoza Date: 14:21, June 09 2011

OK to submit with 2A as per Noble Drilling
6/9/2011 14:25