

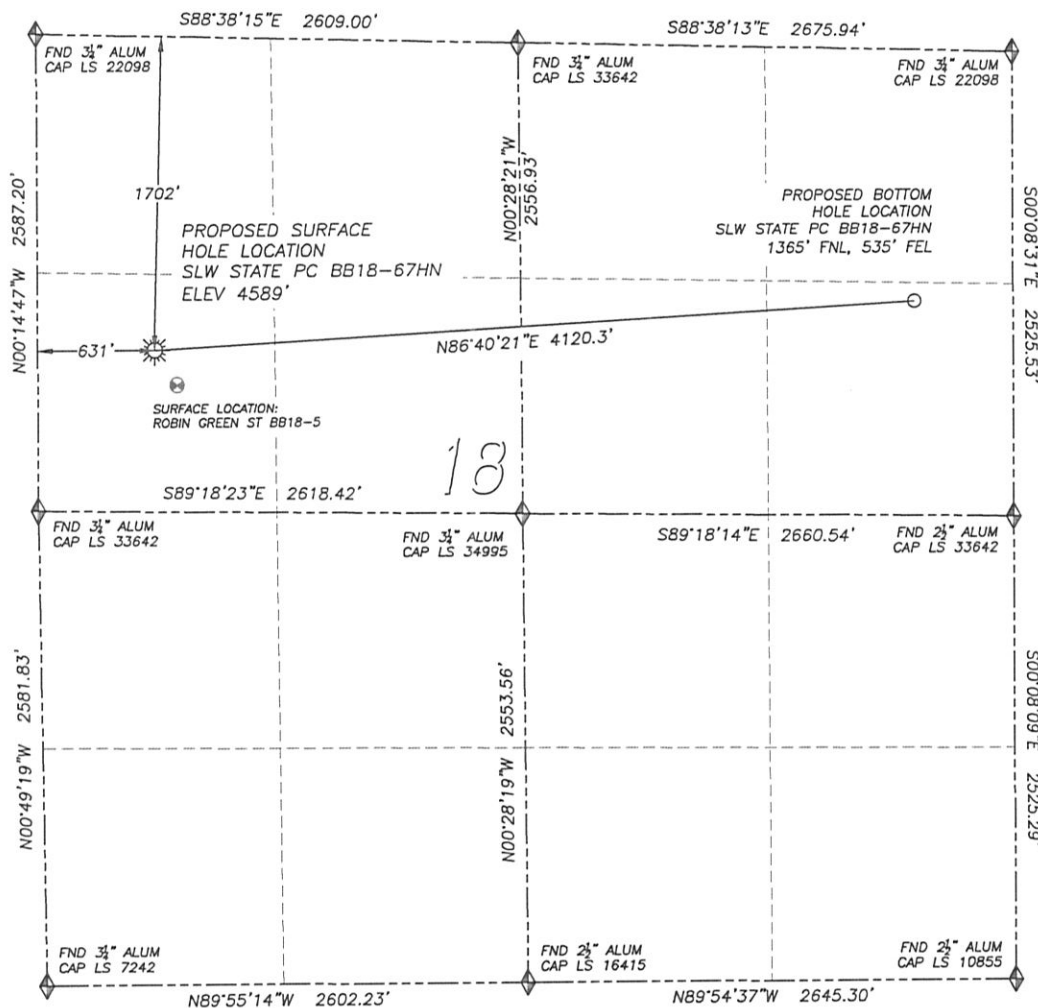
DALEY LAND SURVEYING, INC.

PARKER, CO. 80134

303 953 9841

WELL LOCATION CERTIFICATE SLW STATE PC BB18-67HN

SECTION 18, TOWNSHIP 5 NORTH, RANGE 63 WEST OF THE 6TH PRINCIPAL MERIDIAN



0 500 1000
SCALE: 1" = 1000'

LEGEND

- ◆ FOUND MONUMENT AS DESCRIBED
- ☼ PROPOSED WELL
- ⊙ EXISTING WELL
- BOTTOM HOLE
- ⊘ ABANDONED WELL

NAD 83 LATITUDE AND LONGITUDE

SLW STATE PC BB18-67HN

SURFACE HOLE:

LATITUDE: N40.40144°

LONGITUDE: W104.48684°

ELEVATION: 4589'

FOOTAGE: 1702' FNL, 631' FWL

PDOP: 2.0

QTR/QTR: SW4/NW4

PROP LINE: 631' ± WEST

BOTTOM HOLE:

LATITUDE: N40.40209°

LONGITUDE: W104.47208°

FOOTAGE: 1365' FNL, 535' FEL

NEAREST EXISTING WELL:

ROBIN GREEN ST BB18-5 SURFACE HOLE

LATITUDE: N40.40091°

LONGITUDE: W104.48641°

ELEVATION: 4589'

227° SOUTHEAST

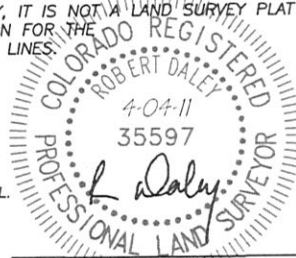
IN ACCORDANCE WITH A REQUEST FROM ERIK VAN DECAR OF NOBLE ENERGY INC., DALEY LAND SURVEYING, INC. HAS DETERMINED THE SURFACE LOCATION OF THE SLW STATE PC BB18-67HN WELL TO BE 1702' FNL, 631' FWL, AS MEASURED AT NINETY (90) DEGREES FROM THE SECTION LINES OF SECTION 18, TOWNSHIP 5 NORTH, RANGE 63 WEST OF THE 6TH PRINCIPAL MERIDIAN, WELD COUNTY, COLORADO. THE BOTTOM HOLE LOCATION, PROVIDED BY THE CLIENT, IS TO BE 1365' FNL, 535' FEL.

I HEREBY CERTIFY THAT THIS WELL LOCATION CERTIFICATE WAS PREPARED BY ME OR UNDER MY DIRECT SUPERVISION, THAT THE WORK WAS COMPLETED ON 4/01/2011 FOR AND ON BEHALF OF NOBLE ENERGY, INC., AND THAT THIS MAP DOES NOT REPRESENT A BOUNDARY SURVEY, IT IS NOT A LAND SURVEY PLAT OR AN IMPROVEMENT SURVEY PLAT AND IT IS NOT TO BE RELIED UPON FOR THE ESTABLISHMENT OF FENCE, BUILDING OR OTHER FUTURE IMPROVEMENT LINES.

NOTES:

- 1) BEARINGS FOR THIS MAP ARE ASSUMED AND BASED UPON GPS OBSERVATIONS MADE BETWEEN MONUMENTS LOCATED AT THE NORTHWEST CORNER AND WEST QUARTER CORNER OF SECTION 18, T.5N., R.63W.
- 2) HORIZONTAL DATUM IS NAD83.
- 3) VERTICAL DATUM IS NAVD88. ELEVATIONS ARE DERIVED FROM GPS OBSERVATIONS PROCESSED THROUGH OPUS, UTILIZING THE GEOID03 MODEL.
- 4) SEE LOCATION DRAWING FOR VISIBLE IMPROVEMENTS WITHIN 600' OF PROPOSED SURFACE HOLE LOCATION.
- 5) SURFACE USE: PASTURE.

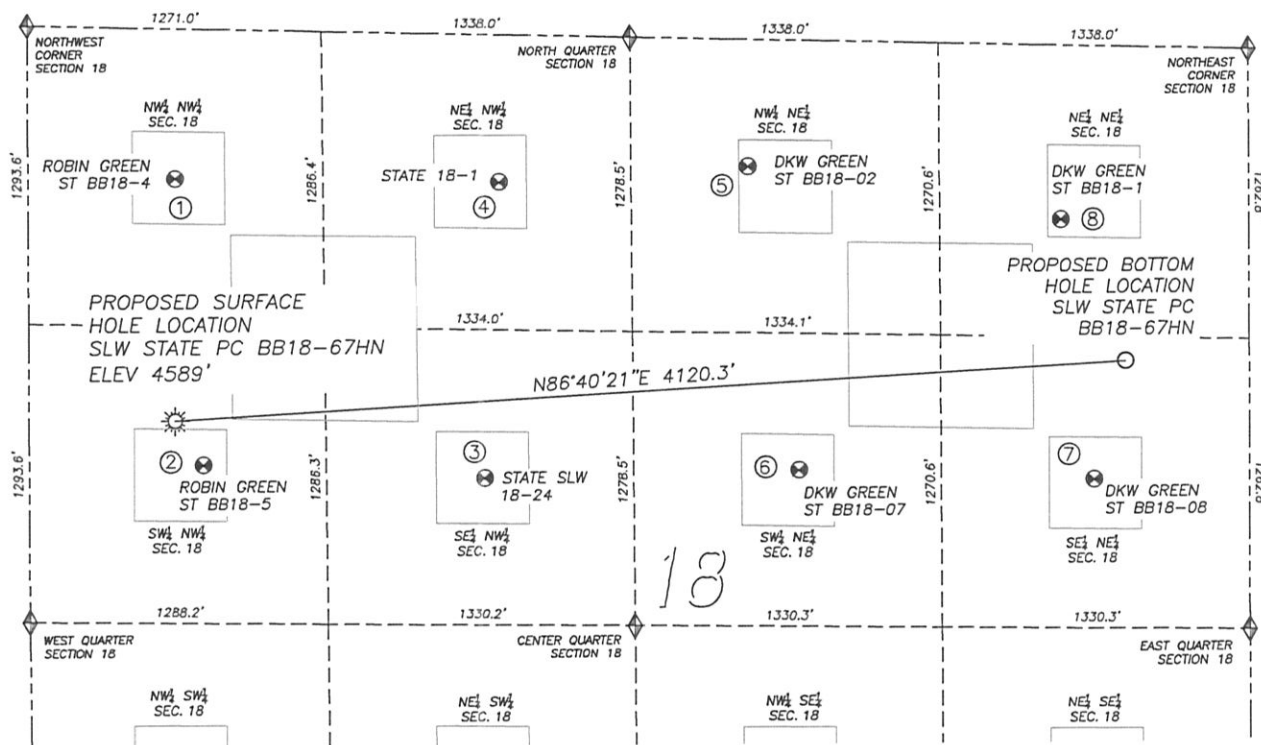
NOTICE: According to Colorado law you MUST commence any legal action based upon any defect in this W.L.C. within three years after you first discover such defect. In no event may any action based upon any such defect in this W.L.C. be commenced more than ten years from the date of the certification shown herein.



FOR AND ON BEHALF OF
DALEY LAND SURVEYING INC.,
Robert Daley, PLS 35597

SITE SKETCH SLW STATE PC BB18-67HN

SECTION 18, TOWNSHIP 5 NORTH, RANGE 63 WEST OF THE 6TH PRINCIPAL MERIDIAN



①

ROBIN GREEN
STATE BB18-4
NW/NW SEC. 18
651' FNL, 636' FWL
LAT. N40.40433'
LONG. W104.48684'
EL: 4599'
PDOP 1.8

②

ROBIN GREEN
STATE BB18-5
SW/NW SEC. 18
1891' FNL, 752' FWL
LAT. N40.40091'
LONG. W104.48641'
EL: 4589'
PDOP 1.6

③

STATE SLW 18-24
SE/NW SEC. 18
1925' FNL, 1969' FWL
LAT. N40.40074'
LONG. W104.48204'
EL: 4595'
PDOP 1.4

④

STATE 18-1
NE/NW SEC. 18
641' FNL, 2038' FWL
LAT. N40.40426'
LONG. W104.48181'
EL: 4618'
PDOP 1.2

⑤

DKW GREEN
STATE BB18-02
NW/NE SEC. 18
552' FNL, 2165' FEL
LAT. N40.40443'
LONG. W104.47794'
EL: 4634'
PDOP 1.9

⑥

DKW GREEN
STATE BB18-07
SW/NE SEC. 18
1867' FNL, 1949' FEL
LAT. N40.40081'
LONG. W104.47715'
EL: 4614'
PDOP 2.0

⑦

DKW GREEN
STATE BB18-08
SE/NE SEC. 18
1884' FNL, 672' FEL
LAT. N40.40068'
LONG. W104.47256'
EL: 4635'
PDOP 1.3

⑧

DKW GREEN
STATE BB18-1
NE/NE SEC. 18
757' FNL, 812' FEL
LAT. N40.40378'
LONG. W104.47308'
EL: 4649'
PDOP 1.3

NOTES:

- THIS DOES NOT REPRESENT A BOUNDARY SURVEY
- THE LATITUDES AND LONGITUDES SHOWN ARE REFERENCED TO NAD83
- DATUM FOR ELEVATION IS NAVD88. ELEVATIONS ARE DERIVED FROM GPS-RTK OBSERVATIONS PROCESSED THROUGH OPUS, UTILIZING THE GEOID03 MODEL.

LEGEND

- ◆ FOUND MONUMENT AS DESCRIBED
- ☀ PROPOSED WELL
- EXISTING WELL
- BOTTOM HOLE
- ⊘ ABANDONED WELL

0 800
SCALE: 1" = 800'

PAD DETAIL

